

**WAC 296-155-55305 Lifting personnel near electrical power lines.**

(1) It is recognized that lifting personnel where the crane/equipment or platform can become electrified from electric power lines is an extremely hazardous practice. It is required to perform the lift so there is no possibility of the crane/equipment, load line, or personnel platform becoming a conductive path. The employer must not use cranes/equipment to lift personnel under electric power lines if any combination of boom, personnel platform, load line, and machine component will enter the prohibited zone. (See Table 10.) Lifting personnel near electric lines is not allowed unless there is no less hazardous way to do the job. The three situations to consider, and take steps to establish, when lifting personnel near electric power lines are:

**Table 10**

| <b>Condition</b> | <b>Situation</b>  |
|------------------|---|
| A                | Power lines are deenergized and grounded as shown in Figure 9. (This is the safest and preferred condition.)  |
| B                | Power lines are energized with the crane/equipment outside the prohibited zone, but there is a potential for the crane/equipment or platform being energized as shown in Figure 10.   |
| C                | Power lines are energized with the crane/equipment inside the prohibited zone, and there is a possibility that the crane/equipment or platform can become energized as shown in Figure 11. (Lifting personnel in this condition is prohibited.) |

(2) **Condition A.** This is the preferred condition under which a personnel lift can be performed. The hazard of injury or death due to electrocution has been removed. The employer must take the following steps when lifting personnel in a Condition A situation:

(a) The power company or utility owner of the energized lines must deenergize the lines.

(b) The energized lines must be visibly grounded to avoid the possibility of electrical feedback.

(c) A qualified representative of the owner of the power lines or a designated representative of the electric utility must be on the site to verify that steps (a) and (b) of this subsection have been completed and that the power lines are not energized.

(d) The employer must install durable signs at the operator's station and on the outside of the crane, warning that electrocution or serious bodily injury may occur unless the minimum clearance of 20 feet is maintained between the crane/equipment and platform and power lines up to 350 kV or 50 feet of a power line that is over 350 kV. The employer must post these signs at the crane/equipment operating station, on the outside of the crane/equipment, and inside the personnel platform.

(e) If proximity warning devices, insulated links, or boom cages are used, they must not be a substitute for any of the requirements of this section. If these devices are used, the employer must instruct the crane/equipment operator, ground crew, and platform occupants on the limitations of the devices, operating condition requirements of the devices, and the devices' testing requirements prescribed by the device manufacturer.

(3) **Condition B.** The employer must take the following steps when lifting personnel in a Condition B situation:

(a) A meeting, on the job site, between the job site management and either a qualified representative of the owner of the power lines or the electric utility must take place. The employer must establish procedures to safely complete the lift.

(b) Hoisting personnel within 20 feet of a power line that is up to 350 kV, and hoisting personnel within 50 feet of a power line that is over 350 kV, is prohibited, except for work covered by chapter 296-45 WAC, Electric power generation, transmission, and distribution, and performed by qualified personnel.

(c) The employer must add power line movement, horizontal and vertical, due to wind to the distances specified in (b) of this subsection. The employer must consult a qualified representative of the power line owner or a designated representative of the electric utility for the movement distances.

(d) The employer must continuously monitor the required clearances to the power lines by a dedicated and qualified signal person in constant communication with the crane/equipment operator.

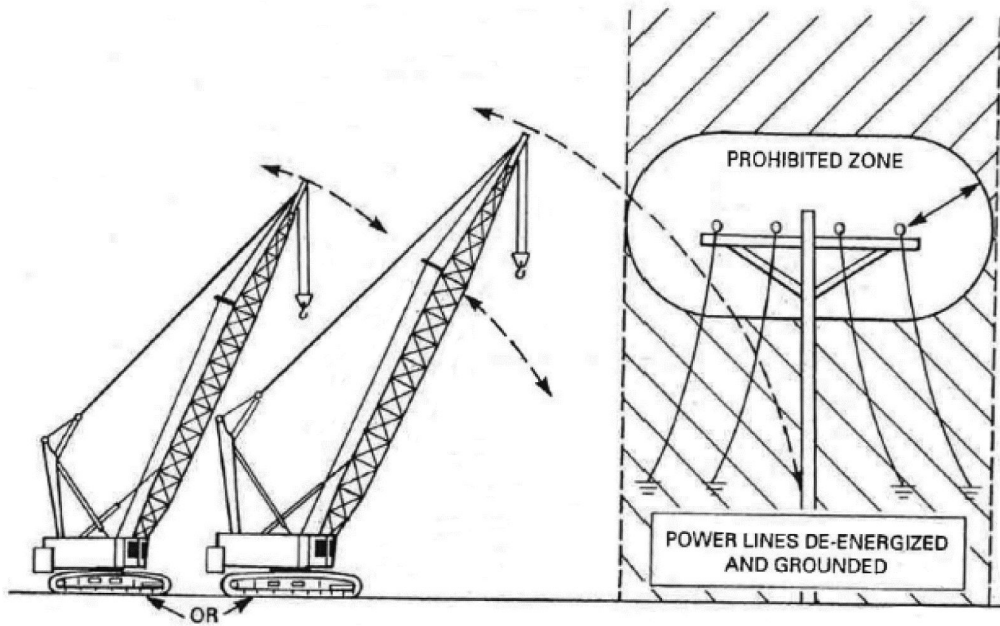
(e) Personnel platform movement restraint, when required, must be done through electrically nonconductive tag lines.

(f) The employer must not permit any person outside the personnel platform to touch the crane/equipment, load line, or platform unless the signal person identified in (d) of this subsection indicates it is safe.

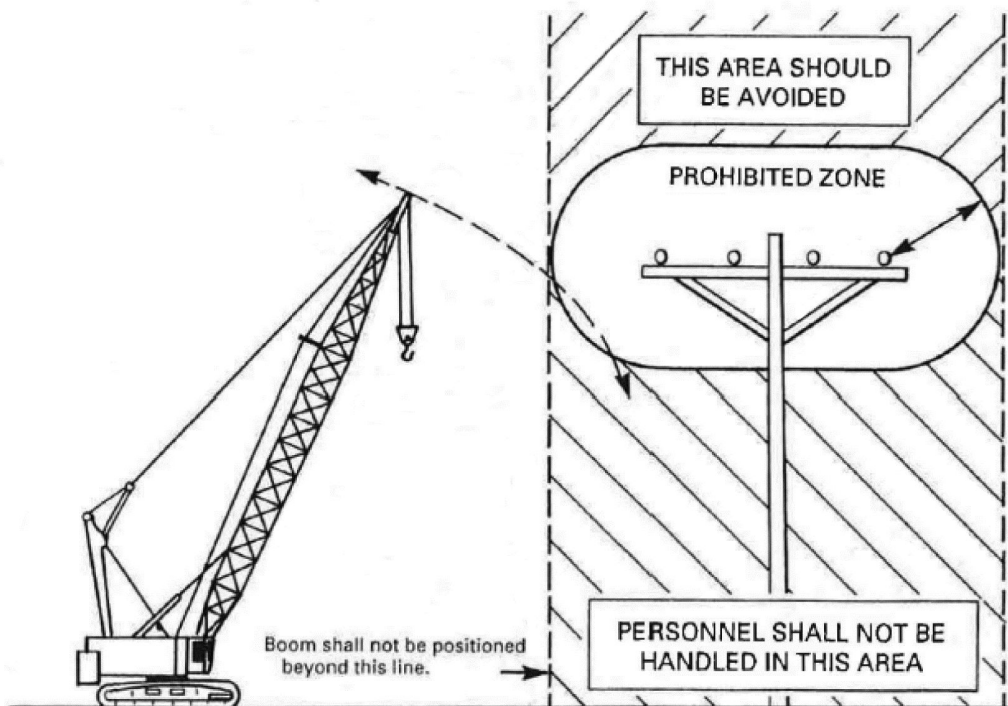
(g) The employer must post durable signs warning that electrocution or serious bodily injury may occur unless the minimum clearance specified in (b) of this subsection is maintained between the crane/equipment and platform and power lines. The employer must post these signs at the crane/equipment operating station, on the outside of the crane/equipment, and inside the personnel platform.

(h) If proximity warning devices, insulated links, or boom cages are used, they must not be a substitute for any of the requirements of this section. If these devices are used, the employer must instruct the crane/equipment operator, ground crew, and platform occupants on the limitations of the devices, operating condition requirements of the devices, and the devices' testing requirements prescribed by the device manufacturer.

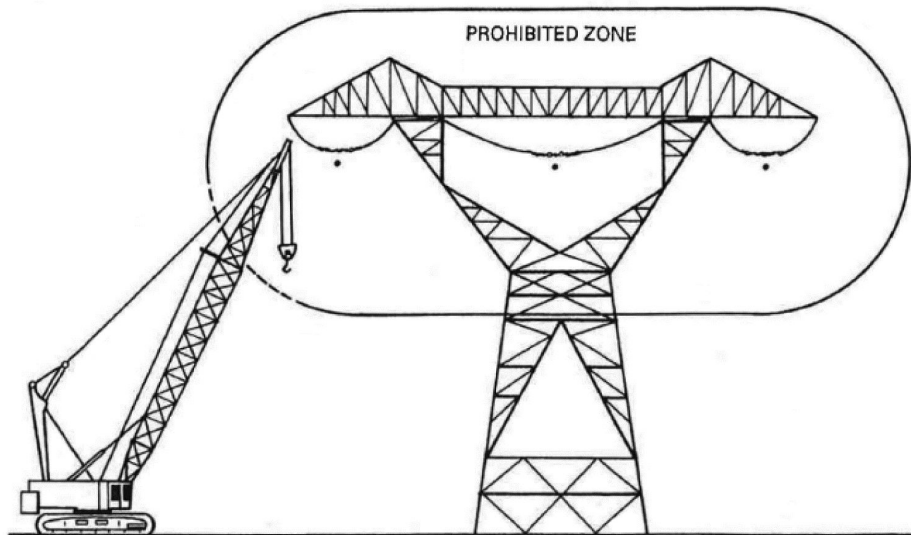
(4) **Condition C.** Lifting personnel under Condition C is prohibited.



**Condition A (see Table 10)  
Figure 9**



**Condition B (see Table 10)  
Figure 10**



**Condition C (see Table 10)  
This Condition is Prohibited  
Figure 11**

[Statutory Authority: RCW 49.17.010, 49.17.040, 49.17.050, 49.17.060, and chapter 49.17 RCW. WSR 25-16-089, s 296-155-55305, filed 8/5/25, effective 9/5/25. Statutory Authority: RCW 49.17.010, 49.17.040, 49.17.050, 49.17.060. WSR 16-09-085, § 296-155-55305, filed 4/19/16, effective 5/20/16. Statutory Authority: RCW 49.17.010, 49.17.040, 49.17.050, 49.17.440, 49.17.060, and 29 C.F.R. 1926, Subpart CC. WSR 12-01-086, § 296-155-55305, filed 12/20/11, effective 2/1/12.]