

**(Effective until October 1, 2020)**

**WAC 296-876-60030 Rungs, cleats and steps.** (1) You must make sure rungs have a minimum diameter as follows:

(a) Rungs of wood ladders are at least one and one-eighth inches.  
(b) Rungs of metal ladders subject to unusually corrosive exposures, such as individual metal rungs imbedded in concrete which serve as access to pits and to other areas under floors, are at least one inch.

(c) Rungs of all other metal ladders are at least three-quarters inch.

(2) You must make sure rungs, cleats, and steps are all of the following:

(a) Parallel.

(b) Level.

(c) Uniformly spaced throughout the length of the ladder.

(d) Spaced so the distance from the centerline of one rung to the centerline of the next rung does not exceed twelve inches.

**Exception:** The vertical distance from the ground, floor, or roof at the access level to the first rung may be adjusted within a range of fourteen inches.

(3) You must make sure the minimum inside clear width of the stepping surface of rungs, steps, or cleats is sixteen inches.

(4) You must make sure individual rung or step-type ladders have rungs or steps that are shaped so that a person's foot cannot slide off the end.

[Statutory Authority: RCW 49.17.010, 49.17.040, 49.17.050, 49.17.060, and chapter 49.17 RCW. WSR 14-09-095, § 296-876-60030, filed 4/22/14, effective 7/1/14. Statutory Authority: RCW 49.17.010, 49.17.040, 49.17.050, 49.17.060. WSR 06-16-020, § 296-876-60030, filed 7/24/06, effective 12/1/06.]

**(Effective October 1, 2020)**

**WAC 296-876-60030 Rungs, cleats and steps.** (1) You must make sure rungs have a minimum diameter as follows:

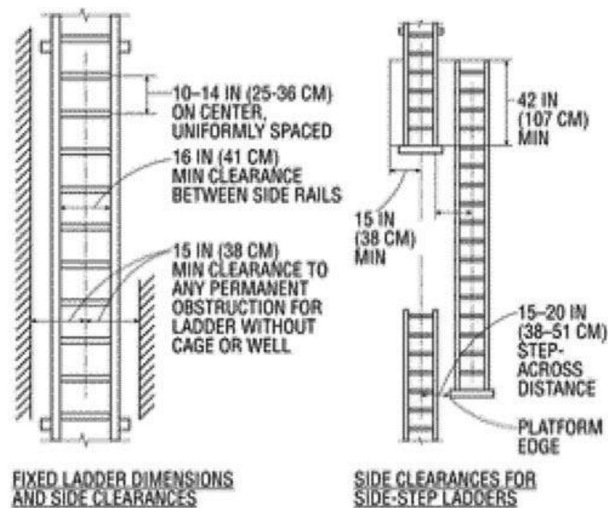
(a) Rungs of wood ladders are at least one and one-eighth inches.

(b) Rungs of metal ladders subject to unusually corrosive exposures, such as individual metal rungs imbedded in concrete which serve as access to pits and to other areas under floors, are at least one inch.

(c) Rungs of all other metal ladders are at least three-quarters inch.

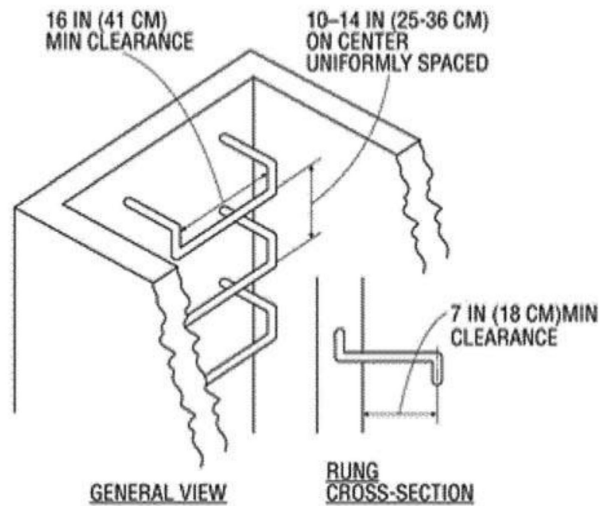
(2) You must make sure rungs, cleats, and steps are spaced so the distance from the centerline of one rung to the centerline of the next rung does not exceed fourteen inches, or is less than ten inches (see Figure D-2 in this section). Ladder rungs in elevator shafts must be spaced not less than six inches (15 cm) apart, and not more than sixteen and one-half inches (42 cm) apart, as measured rung from rung centerline to the next centerline (along the ladder side rails).

(3) You must make sure the minimum inside clear width of the stepping surface of rungs, steps, or cleats is sixteen inches (see Figure D-2 below).



**Figure D-2 - Side-Step Fixed Ladder Sections**

(4) You must make sure individual rung or step-type ladders have rungs or steps that are shaped so that a person's foot cannot slide off the end (see Figure D-4 below).



**Figure D-4 - Individual Rung Ladder**

[Statutory Authority: RCW 49.17.010, 49.17.040, 49.17.050, 49.17.060 and chapter 49.17 RCW. WSR 20-09-146, § 296-876-60030, filed 4/21/20, effective 10/1/20; WSR 14-09-095, § 296-876-60030, filed 4/22/14, effective 7/1/14. Statutory Authority: RCW 49.17.010, 49.17.040, 49.17.050, 49.17.060. WSR 06-16-020, § 296-876-60030, filed 7/24/06, effective 12/1/06.]