

**STATE OF WASHINGTON
DEPARTMENT OF CORRECTIONS
ADULT CORRECTIONS FACILITIES**



**FACILITY REPORT
OFFENDER CHARACTERISTICS
POPULATION MOVEMENT AND CUSTODY
FISCAL YEAR 2008**

As Of June 30, 2008

BUDGET RESOURCE MANAGEMENT

TABLE OF CONTENTS

GLOSSARYiii

POPULATION OF ADULT CORRECTIONS FACILITIES

Average Daily Population And Capacity By Month..... Table 1A
Female Average Daily Population And Capacity By Month..... Table 1B
Average Daily Population Per Month By Type of FacilityChart 1

CHARACTERISTICS OF RESIDENTS, FACILITIES AND WORK RELEASE

Distribution Of Location By Race And Hispanic Origin..... Table 2A
Distribution By Military Service Table 2A-1
Distribution Of Offense By Location..... Table 2B
Distribution Of Location By Violent Crime Convictions Among Inmates Serving Washington State Sentences Table 2C
Distribution Of Location By Age Category Including Average Age..... Table 2D
Distribution Of Location By Race And Hispanic Origin..... Table 2E
Distribution Of Location By County Of Conviction Table 2F
Distribution Of Offense By Race And Hispanic Origin..... Table 2G
Distribution By Race And Hispanic Origin Of Offenders Currently Housed In Rented Beds Out Of State. Table 2H
Distribution Of All Inmates Location by Risk Management Type Table 2J
Age Distribution Over Last Five Fiscal Years Chart 2-1
Distribution of Offense Category Over Last Five Fiscal Years Chart 2-3
Percentage Of Violent Vs. Non-Violent Crime Convictions Among Washington State Inmates Over Last Five Fiscal Years.. Chart 2-4
Sex Distribution Over Last Five Fiscal Years Chart 2-5

ADMISSIONS TO FACILITIES

Admissions By Month, Type Of Admission, And Sex..... Table 3A
Admissions By Type Of Admission And County Of Conviction Table 3B
Admissions By Age At Admission, Race, Hispanic Origin, And Sex Table 3C
Admissions By County Of Conviction, Race, And Hispanic Origin..... Table 3D
Admissions By Offense And Type Of Admission..... Table 3E
Comparisons Of Admissions And Releases By Months..... Chart 3
Admissions By Type Of Admission Over Last Five Fiscal Years Chart 3-1
Admissions By Age At Admission Over Last Five Fiscal Years Chart 3-2
Admissions By Sex Over Last Five Fiscal Years..... Chart 3-3
Admissions By Offense Category Over Last Five Fiscal Years..... Chart 3-4

TABLE OF CONTENTS (CONTINUED)

RELEASES FROM FACILITIES

| | |
|--|------------|
| Releases By Month, Type Of Release, And Sex..... | Table 4A |
| Releases By Type Of Release, Race And Hispanic Origin | Table 4B |
| Release Type By Length Of Stay | Table 4C |
| Length Of Stay Of Releases By Category Of Admission..... | Table 4C-1 |
| Length Of Stay Of Releases By Special Sentences: DOSA..... | Table 4C-2 |
| Length Of Stay Of Releases By Special Sentences: Violators..... | Table 4C-3 |
| Length Of Stay Of Releases By Offense For New Admission..... | Table 4D-1 |
| Length Of Stay Of Releases By Offense For Re-Admission | Table 4D-2 |
| Length Of Stay Of Releases By Offense For DOSA Offenders | Table 4D-3 |
| Releases By Type Of Release..... | Chart 4-1 |
| Average Length Of Stay Of Releases By Category Of Admission Over Last Five Fiscal Years..... | Chart 4-2 |
| Releases By Sex Over Last Five Fiscal Years | Chart 4-3 |

CUSTODY DISTRIBUTIONS OF RESIDENTS WITHIN FACILITIES

| | |
|--|-----------|
| Current Custody Classification By Location | Table 5A |
| Current Classification By Most Recent Override Reason Excluding Minimum Custody Scores With Minimum Placement..... | Table 5B |
| Current Custody Classification By Most Recent Placement Reason For Non-Standard Minimum Assignments..... | Table 5C |
| Current Custody Classification By Population Assignment And Sex | Table 5D |
| Initial Custody Classification By Sex And Score..... | Table 5E |
| Initial Custody Classification By Override Reason And Score..... | Table 5F |
| Custody Classification By Risk Management Type | Table 5G |
| Assigned Custody Distribution Over Last Five Fiscal Years | Chart 5-1 |
| Percentage Of Assigned Custody By Sex Over Last Five Fiscal Years..... | Chart 5-2 |
| Distribution Of Initial Assigned Custody Over Last Five Fiscal Years | Chart 5-3 |

GLOSSARY

ADMISSIONS

New Admission: a felon convicted in Washington State Superior Court and entering prison for the first time in this state.

Readmission: a felony offender with a previous history of incarceration in Washington State who will be serving a sentence with a new minimum term established. This includes offenders whose parole or community custody has been revoked who may or may not have a new crime.

Other: includes boarders (offenders with a sentence of one year or less who are in the custody of the Department of Corrections under agreement with county jails), community custody violators, and felony offenders from other states who are serving a portion of their sentences in a Washington State facility. This also includes offenders detained while awaiting a community custody violation hearing.

CAPACITY

The capacity is the operational bed capacity of a facility. It is determined by summing the number of inmate days on IR (In-Residence), EL (Escorted Leave), CO (Court Order), and CJ (County Jail), then dividing by the number of days in the month. ADP subtotals may not add due to rounding and is reported as of the end of the reporting month.

COMMUNITY CUSTODY /CC VIOLATOR

Community custody is the portion of an offender's sentence served in the community after confinement, where controls are placed on their movements and activities by the Department of Corrections. Community custody may follow prison or jail confinement. A community custody violator is an offender who does not comply with terms of community sentence and receives a violation resulting in a confinement sanction.

COUNTY OF CONVICTION

The county of conviction/admission is the county in which the offender is sentenced. In the case of multiple crimes, the county of the most serious crime is given.

DRUG OFFENDER SENTENCING ALTERNATIVE (DOSA)

A sentencing alternative for drug involved offenders that has treatment requirements and a shorter than non-alternative sentence length.

EARNED RELEASE TIME

Sentences are subject to provisions about the maximum amount of time that may be accrued while an offender is incarcerated that may result in a release prior to the sentence's maximum term. For certain offenders, the earned release time that will apply will not be fixed until an actual release date is fixed.

GLOSSARY

FACILITY

The term facility includes all Department of Corrections total confinement institutions -- prisons, camps, assisted living facilities, pre-releases -- and work release facilities. WCC RECEPTION--Washington Corrections Center, Reception Center, Shelton; WCC INSTIT--Washington Corrections Center, Institution, Shelton; WCC WOMEN--Washington Corrections Center for Women, Gig Harbor; WASH PENIT--Washington State Penitentiary, Walla Walla; MCNEIL ISLAND--McNeil Island Corrections Center, Steilacoom; MONROE COMPLEX--Twin Rivers Corrections Center, Washington State Reformatory; and Special Offender Center, all at Monroe; CLALLAM BAY--Clallam Bay Corrections Center, Clallam Bay; AIRWAY HEIGHTS--Airway Heights Corrections Center, Airway Heights; STAFFORD CREEK--Stafford Creek Corrections Center, Aberdeen; LARCH--Larch Corrections Center, Yacolt; CEDAR CREEK--Cedar Creek Corrections Center, Littlerock; OLYMPIC--Olympic Corrections Center, Forks; COYOTE RIDGE--Coyote Ridge Corrections Center, Connell; AHTANUM VIEW--Ahtanum View Assisted Living Facility, Yakima; BENTON COUNTY VIOL FAC--Benton County Violation Facility; CHELAN COUNTY VIOL FAC -- Chelan County Violation Facility; KING COUNTY VIOL FAC--King County Violation Facility; LEWIS COUNTY VIOL FAC--Lewis County Violation Facility; PIERCE COUNTY VIOL FAC--Pierce County Violation Facility; YAKIMA COUNTY VIOL FAC--Yakima County Violation Facility; PINE LODGE--Pine Lodge Corrections Center for Women, Medical Lake; TACOMA PR--Tacoma Pre-Release, Tacoma; WORK RELEASE--Work Releases, several locations; WEP--Work Ethic Program at Pine Lodge Pre-Release (males) and Washington Corrections Center for Women (females).

OFFENSE TYPE

The offense type is the crime for which a felon is incarcerated. In cases of multiple convictions, the most serious crime is presented. The offenses, as presented, are divided into two main categories: violent crimes, as defined in RCW 9.94A, and nonviolent crimes.

RELEASES

Discharge: an offender released to the community with no face-to-face supervision requirements.

Rel. to CC: an offender released to community custody.

Rel. to PRS: an offender released to Post Release Supervision.

Parole: an offender released under the authority of the indeterminate Sentencing Review Board.

Violator Rel: an offender released after serving sanction time for violating the conditions of community custody.

Other: Includes boarder, pardon, death, sentence vacate, out on bond, and boarder releases.

SENTENCING AUTHORITY

Board: an offender who has either a Pre-SRA sentence or a SB-6151 sentence. The Indeterminate Sentence Review Board has the authority to make release decisions for such an offender.

SRA: an offender who has an SRA sentence, one with an offense date of July 1, 1984 or later, where release decisions are mandated by law.

Other: an from another state, a boarder, a community custody offender serving violation time or awaiting a hearing, where release decisions depend upon factors unique to the individual offender.



GLOSSARY

VIOLENT OFFENDER

A felon found guilty of a violent crime as defined in the Sentencing Reform Act (Chapter 9.94A RCW). Included are all Class A felonies and some Class B felonies, such as manslaughter 1 and 2, indecent liberties with forcible compulsion, rape 2 (committed before July 1, 1990), child molestation 1 (committed before July 1, 1990), kidnapping 2, arson 2, assault 2, robbery 2, extortion 1, vehicular homicide, and vehicular assault.

WORK ETHIC PROGRAM

A camp-based program with a work ethic focus where offenders, after judicial recommendation, are continually engaged in meaningful activities and where unstructured time is kept to a minimum.

WORK RELEASE

A supervisory program imposed on an offender who has been conditionally released from total confinement in an institution or on a parolee or probationer in need of increased supervision. Certain felons convicted after implementation of the Sentencing Reform Act may serve their term of partial confinement in a Department of Corrections work release facility. The program allows residents to work or attend educational programs during the day and be confined in the work release facility at night.



**STATE OF WASHINGTON
DEPARTMENT OF CORRECTIONS
ADULT CORRECTIONS FACILITIES**

POPULATION OF ADULT CORRECTIONS FACILITIES

**TABLE 1A
AVERAGE DAILY POPULATION* AND CAPACITY**
BY MONTH FOR FISCAL YEAR 2008**

**BUDGET RESOURCE MANAGEMENT
DEPARTMENT OF CORRECTIONS**

| FACILITY | JUL | | AUG | | SEP | | OCT | | NOV | | DEC | |
|--|---------------|---------------|---------------|-----------------|---------------|---------------|---------------|---------------|---------------|---------------|---------------|---------------|
| | ADP | CAP | ADP | CAP | ADP | CAP | ADP | CAP | ADP | CAP | ADP | CAP |
| Washington Corrections Center--Reception | 1,456 | 1,008 | 1,486 | 1,008 | 1,371 | 1,008 | 1,362 | 1,008 | 1,354 | 1,008 | 1491 | 1008 |
| Washington Corrections Center--Institution | 366 | 290 | 357 | 290 | 361 | 290 | 356 | 290 | 364 | 290 | 355 | 290 |
| Washington Corrections Center/Women | 885 | 738 | 888 | 738 | 847 | 738 | 848 | 738 | 849 | 738 | 866 | 738 |
| Washington State Penitentiary | 1,951 | 1,825 | 1,955 | 1,825 | 1,938 | 1,825 | 1,949 | 1,825 | 1,985 | 1,825 | 1996 | 1825 |
| Monroe Correctional Complex | 2,426 | 2,366 | 2,475 | 2,446 1/ | 2,455 | 2,446 | 2,448 | 2,446 | 2,419 | 2,446 | 2421 | 2446 |
| McNeil Island Corrections Center | 1,296 | 1,292 | 1,296 | 1,292 | 1,295 | 1,292 | 1,295 | 1,292 | 1,294 | 1,292 | 1286 | 1292 |
| Clallam Bay Corrections Center | 895 | 858 | 893 | 858 | 894 | 858 | 892 | 858 | 887 | 858 | 884 | 858 |
| Airway Heights Corrections Center | 2,124 | 1,936 | 2,090 | 2,136 1/ | 2,077 | 2,136 | 2,062 | 2,136 | 2,079 | 2,136 | 2076 | 2136 |
| Stafford Creek Corrections Center | 1,951 | 1,936 | 1,958 | 1,936 | 1,914 | 1,936 | 1,945 | 1,936 | 1,913 | 1,936 | 1834 | 1936 |
| MAJOR INSTITUTION TOTAL | 13,350 | 12,249 | 13,398 | 12,249 | 13,151 | 12,529 | 13,156 | 12,529 | 13,144 | 12,529 | 13,208 | 12,529 |
| Larch Corrections Center | 443 | 400 | 441 | 400 | 453 | 400 | 454 | 400 | 440 | 400 | 398 | 400 |
| Cedar Creek Corrections Center | 403 | 400 | 402 | 400 | 406 | 400 | 403 | 400 | 403 | 400 | 404 | 400 |
| Olympic Corrections Center | 360 | 340 | 367 | 340 | 370 | 340 | 360 | 340 | 359 | 340 | 368 | 340 |
| Coyote Ridge Corrections Center | 614 | 600 | 619 | 600 | 621 | 600 | 608 | 600 | 615 | 600 | 615 | 600 |
| Ahtanum View Corrections Center | 119 | 120 | 117 | 120 | 116 | 120 | 116 | 120 | 119 | 120 | 118 | 120 |
| Mission Creek Corrections Center--Women | 100 | 80 | 106 | 80 | 113 | 80 | 112 | 80 | 113 | 80 | 92 | 80 |
| Pine Lodge Corrections Center for Women | 376 | 359 | 356 | 359 | 388 | 359 | 403 | 359 | 402 | 359 | 388 | 359 |
| MINOR INSTITUTION TOTAL | 2,414 | 2,299 | 2,408 | 2,299 | 2,466 | 2,299 | 2,455 | 2,299 | 2,451 | 2,299 | 2383 | 2,299 |
| CONFINEMENT FACILITY TOTAL | 15,765 | 14,548 | 15,807 | 14,548 | 15,617 | 14,828 | 15,610 | 14,828 | 15,595 | 14,828 | 15,591 | 14,828 |
| Work Release, Inmates | 663 | | 667 | | 662 | | 619 | | 590 | | 550 | |
| Work Release , CCI | 13 | | 11 | | 5 | | 7 | | 6 | | 8 | |
| Work Release , SRA | 0 | | 0 | | 0 | | 0 | | 0 | | 0 | |
| Work Release, Probation/Parole | 8 | | 6 | | 5 | | 5 | | 5 | | 6 | |
| WORK RELEASE TOTAL | 683 | 674 | 684 | 674 | 672 | 674 | 630 | 674 | 601 | 674 | 565 | 674 |
| GRAND TOTAL | 16,448 | 15,222 | 16,491 | 15,222 | 16,289 | 15,502 | 16,241 | 15,502 | 16,196 | 15,502 | 16,155 | 15,502 |
| IN-STATE RENTED BEDS | 796 | 1,006 | 791 | 1,016 1/ | 752 | 1,016 | 746 | 1,016 | 801 | 1,016 | 750 | 1,016 |
| OUT-OF-STATE RENTED BEDS | 1,036 | 1,050 | 1,038 | 1,290 1/ | 1,164 | 1,290 | 1,230 | 1,290 | 1,220 | 1,290 | 1,207 | 1,290 |
| GRAND TOTAL | 18,279 | 17,278 | 18,320 | 17528 | 18,206 | 17,808 | 18,218 | 17,808 | 18,217 | 17,808 | 18,112 | 17,808 |

*NOTE: ADP subtotals may not add due to rounding. The ADP for prisons is calculated by summing the number of inmate days on IR (In-Residence), EL (Escorted Leave), CO (Court Order), and CJ (County Jail), then dividing by the number of days in the month.

**NOTE: Capacity as of the last day of the month. Capacity is defined as the number of persons the facility is designed to hold measured against space, staffing and program standards.

1/: Capacity has changed from previous month.

2/ Contracted beds space to house DOC offenders in County Jails.

3/ Capacity includes Arizona, Minnesota and Oklahoma rented beds.

**TABLE 1A
AVERAGE DAILY POPULATION* AND CAPACITY**
BY MONTH FOR FISCAL YEAR 2008**

**BUDGET RESOURCE MANAGEMENT
DEPARTMENT OF CORRECTIONS**

| FACILITY | JAN | | FEB | | MAR | | APR | | MAY | | JUNE | |
|--|---------------|---------------|---------------|---------------|---------------|---------------|---------------|---------------|---------------|---------------|---------------|---------------|
| | ADP | CAP | ADP | CAP | ADP | CAP | ADP | CAP | ADP | CAP | ADP | CAP |
| Washington Corrections Center--Reception | 1449 | 1008 | 1532 | 1008 | 1,563 | 1,008 | 1593 | 1,008 | 1,553 | 1008 | 1,474 | 1008 |
| Washington Corrections Center--Institution | 356 | 290 | 364 | 290 | 366 | 290 | 360 | 290 | 354 | 290 | 353 | 290 |
| Washington Corrections Center/Women | 891 | 738 | 878 | 738 | 869 | 738 | 865 | 738 | 866 | 738 | 871 | 738 |
| Washington State Penitentiary | 1993 | 1825 | 1969 | 1825 | 1,970 | 1825 | 1949 | 1825 | 1,946 | 2105 | 1,994 | 1825 |
| Monroe Correctional Complex | 2438 | 2446 | 2468 | 2446 | 2,477 | 2,446 | 2489 | 2,446 | 2,551 | 2446 | 2,545 | 2446 |
| McNeil Island Corrections Center | 1291 | 1292 | 1290 | 1292 | 1,278 | 1,292 | 1283 | 1,292 | 1,288 | 1292 | 1,288 | 1292 |
| Clallam Bay Corrections Center | 883 | 858 | 886 | 858 | 894 | 858 | 888 | 858 | 862 | 858 | 871 | 858 |
| Airway Heights Corrections Center | 2092 | 2136 | 2083 | 2136 | 2,088 | 2,136 | 2091 | 2,136 | 2,139 | 2136 | 2,169 | 2136 |
| Stafford Creek Corrections Center | 1813 | 1936 | 1803 | 1936 | 1,812 | 1,936 | 1838 | 1,936 | 1,924 | 1936 | 1,952 | 1936 |
| MAJOR INSTITUTION TOTAL | 13,205 | 12,529 | 13,273 | 12,529 | 13,318 | 12,529 | 13,356 | 12,529 | 13,483 | 12,809 | 13,519 | 12,529 |
| Larch Corrections Center | 399 | 400 | 399 | 400 | 406 | 400 | 394 | 400 | 389 | 400 | 391 | 400 |
| Cedar Creek Corrections Center | 400 | 400 | 402 | 400 | 404 | 400 | 402 | 400 | 393 | 400 | 397 | 400 |
| Olympic Corrections Center | 374 | 340 | 367 | 340 | 363 | 340 | 363 | 340 | 369 | 340 | 367 | 340 |
| Coyote Ridge Corrections Center | 612 | 600 | 613 | 600 | 611 | 600 | 610 | 600 | 611 | 600 | 615 | 600 |
| Ahtanum View Corrections Center | 115 | 120 | 117 | 120 | 119 | 120 | 123 | 120 | 123 | 120 | 122 | 120 |
| Mission Creek Corrections Center--Women | 78 | 80 | 85 | 200 1/ | 95 | 200 | 98 | 200 | 107 | 200 | 124 | 200 |
| Pine Lodge Corrections Center for Women | 373 | 359 | 363 | 359 | 359 | 359 | 354 | 359 | 342 | 359 | 329 | 359 |
| MINOR INSTITUTION TOTAL | 2350 | 2299 | 2,346 | 2,419 | 2,356 | 2,419 | 2,344 | 2,419 | 2,333 | 2,419 | 2,343 | 2,419 |
| CONFINEMENT FACILITY TOTAL | 15,556 | 14,828 | 15,619 | 14,948 | 15,675 | 14,948 | 15,700 | 14,948 | 15,816 | 15,228 | 15,862 | 14,948 |
| Work Release, Inmates | 553 | | 582 | | 608 | | 577 | | 582 | | 573 | |
| Work Release , CCI | 13 | | 14 | | 12 | | 5 | | 8 | | 12 | |
| Work Release , SRA | 2 | | 1 | | 1 | | 1 | | 1 | | 1 | |
| Work Release, Probation/Parole | 6 | | 6 | | 7 | | 6 | | 7 | | 7 | |
| WORK RELEASE TOTAL | 574 | 674 | 603 | 674 | 628 | 674 | 589 | 674 | 599 | 674 | 593 | 674 |
| GRAND TOTAL | 16,130 | 15,502 | 16,223 | 15,622 | 16,302 | 15,622 | 16,289 | 15,622 | 16,415 | 15,902 | 16,456 | 15,622 |
| IN-STATE RENTED BEDS | 856 | 1016 | 875 | 941 1/ | 879 | 1,086 | 854 | 1,090 | 847 | 1,066 | 810 | 1,090 |
| OUT-OF-STATE RENTED BEDS | 1,200 | 1,290 | 1,191 | 1,290 | 1179 | 1290 | 1168 | 1290 | 1,160 | 1290 | 1,137 | 1290 |
| GRAND TOTAL | 18,186 | 17,808 | 18,289 | 17,853 | 18,361 | 17,998 | 18,312 | 18002 | 18,422 | 18,258 | 18,403 | 18,002 |

*NOTE: ADP subtotals may not add due to rounding. The ADP for prisons is calculated by summing the number of inmate days on IR (In-Residence), EL (Escorted Leave), CO (Court Order), and CJ (County Jail), then dividing by the number of days in the month.

**NOTE: Capacity as of the last day of the month. Capacity is defined as the number of persons the facility is designed to hold measured against space, staffing and program standards.

1/: Capacity has changed from previous month.

2/ Contracted beds space to house DOC offenders in County Jails.

3/ Capacity includes Arizona, Minnesota and Oklahoma rented beds.

**SUPPLEMENT TO TABLE 1A
AVERAGE DAILY POPULATION* AND CAPACITY**
BY MONTH FOR FISCAL YEAR 2008**

**BUDGET RESOURCE MANAGEMENT
DEPARTMENT OF CORRECTIONS**

| FACILITY | JUL | | AUG | | SEP | | OCT | | NOV | | DEC | |
|---|---------------|---------------|---------------|-----------------|---------------|---------------|---------------|---------------|---------------|---------------|---------------|---------------|
| | ADP | CAP | ADP | CAP | ADP | CAP | ADP | CAP | ADP | CAP | ADP | CAP |
| Washington Corrections Center--RC | 1,456 | 1,008 | 1,486 | 1,008 | 1,371 | 1,008 | 1,362 | 1,008 | 1,354 | 1,008 | 1,491 | 1,008 |
| Monroe Correctional Complex--WA State Reform | 858 | 632 | 855 | 632 | 809 | 632 | 755 | 632 | 752 | 632 | 743 | 632 |
| Monroe Correctional Complex--Twin Rivers Corr | 816 | 834 | 823 | 834 | 822 | 834 | 827 | 834 | 826 | 834 | 827 | 834 |
| Monroe Correctional Complex--Special Offender | 376 | 400 | 373 | 400 | 371 | 400 | 367 | 400 | 365 | 400 | 370 | 400 |
| Monroe Correctional Complex--IMU | | 100 | | 100 | 31 | 100 | 87 | 100 | 90 | 100 | 91 | 100 |
| Washington State Penitentiary | 1,024 | 807 | 1,034 | 807 | 1,023 | 807 | 970 | 807 | 983 | 807 | 982 | 807 |
| Washington State Penitentiary--Medium Security | 742 | 756 | 736 | 756 | 734 | 756 | 729 | 756 | 741 | 756 | 744 | 756 |
| Washington State Penitentiary--IMU | 1 | 96 | 1 | 96 | 1 | 96 | 70 | 96 | 89 | 96 | 94 | 96 |
| Washington Corrections Center/Women | 554 | 466 | 551 | 466 | 518 | 466 | 525 | 466 | 531 | 466 | 537 | 466 |
| Washington Corrections Center--TC | 245 | 228 | 242 | 228 | 241 | 228 | 242 | 228 | 243 | 228 | 242 | 228 |
| Washington Corrections Center--IMU | 121 | 62 | 114 | 62 | 120 | 62 | 113 | 62 | 122 | 62 | 114 | 62 |
| McNeil Island Corrections Center | 989 | 993 | 992 | 993 | 992 | 993 | 991 | 993 | 998 | 993 | 995 | 993 |
| McNeil Island Corrections Center--IMU | 42 | 43 | 41 | 43 | 40 | 43 | 39 | 43 | 36 | 43 | 32 | 43 |
| Clallam Bay Corrections Center | 468 | 396 | 462 | 396 | 472 | 396 | 465 | 396 | 460 | 396 | 455 | 396 |
| Clallam Bay Corrections Center--MSC | 368 | 400 | 370 | 400 | 362 | 400 | 369 | 400 | 370 | 400 | 375 | 400 |
| Clallam Bay Corrections Center--IMU | 59 | 62 | 61 | 62 | 61 | 62 | 58 | 62 | 57 | 62 | 54 | 62 |
| Airway Heights Corrections Center--Medium Sec | 1,605 | 1,536 | 1,575 | 1,536 | 1,560 | 1,536 | 1,551 | 1,536 | 1,569 | 1,536 | 1,565 | 1,536 |
| Stafford Creek Corrections Center | 1,861 | 1,864 | 1,869 | 1,864 | 1,824 | 1,864 | 1,858 | 1,864 | 1,832 | 1,864 | 1,750 | 1,864 |
| Stafford Creek Corrections Center--IMU | 90 | 72 | 89 | 72 | 89 | 72 | 87 | 72 | 81 | 72 | 84 | 72 |
| SUBTOTAL | 11,674 | 10,755 | 11,676 | 10,755 | 11,439 | 10,755 | 11,464 | 10,755 | 11,500 | 10,755 | 11,546 | 10,755 |
| Monroe Correctional Complex--WSR Minimum | 376 | 400 | 424 | 480 1/ | 422 | 480 1/ | 413 | 480 | 386 | 480 | 389 | 480 |
| Wash State Pen--Minimum Security Unit | 184 | 166 | 184 | 166 | 180 | 166 | 180 | 166 | 171 | 166 | 175 | 166 |
| McNeil Island Corrections Center/Minimum Security | 266 | 256 | 263 | 256 | 263 | 256 | 265 | 256 | 259 | 256 | 258 | 256 |
| Olympic Corrections Center | 360 | 340 | 367 | 340 | 370 | 340 | 360 | 340 | 359 | 340 | 368 | 340 |
| Larch Corrections Center | 443 | 400 | 441 | 400 | 453 | 400 | 454 | 400 | 440 | 400 | 398 | 400 |
| Cedar Creek Corrections Center | 403 | 400 | 402 | 400 | 406 | 400 | 403 | 400 | 403 | 400 | 404 | 400 |
| Coyote Ridge Corrections Center | 614 | 600 | 619 | 600 | 621 | 600 | 608 | 600 | 615 | 600 | 615 | 600 |
| Wash Corr Center/Women--Minimum Security | 330 | 272 | 336 | 272 | 327 | 272 | 321 | 272 | 318 | 272 | 328 | 272 |
| Airway Heights Corrections Center--Minimum Sec | 519 | 400 | 515 | 600 1/ | 517 | 600 1/ | 511 | 600 | 510 | 600 | 511 | 600 |
| Mission Creek Corrections Center --Women | 100 | 80 | 106 | 80 | 113 | 80 | 112 | 80 | 113 | 80 | 92 | 80 |
| Ahtanum View Corrections Center | 119 | 120 | 117 | 120 | 116 | 120 | 116 | 120 | 119 | 120 | 118 | 120 |
| Pine Lodge Corrections Center for Women | 376 | 359 | 356 | 359 | 388 | 359 | 403 | 359 | 402 | 359 | 388 | 359 |
| SUBTOTAL | 4,089 | 3,793 | 4,130 | 3,793 | 4,176 | 4,073 | 4,145 | 4,073 | 4,095 | 4,073 | 4,045 | 4,073 |
| CONFINEMENT FACILITY TOTAL | 15,764 | 14,548 | 15,806 | 14,548 | 15,615 | 14,828 | 15,609 | 14,828 | 15,595 | 14,828 | 15,590 | 14,828 |
| IN-STATE RENTED BEDS | | | | | | | | | | | | |
| Asotin County Violation Facility | | | | | | | | | | | | |
| Benton County Violation Facility | 115 | 120 | 96 | 120 | 115 | 120 | 114 | 120 | 117 | 120 | 103 | 120 |
| Chelan County Violation Facility | 19 | 10 | 20 | 10 | 22 | 10 | 23 | 10 | 20 | 10 | 19 | 10 |
| City of Toppenish | 0 | 0 | 0 | 10 1/ | 0 | 10 | 0 | 10 | 0 | 10 | 0 | 10 |
| Clark County Violation Facility | 83 | 60 | 77 | 60 | 71 | 60 | 67 | 60 | 75 | 60 | 70 | 60 |
| Cowlitz County Violation Facility | 51 | 100 | 52 | 100 | 42 | 100 | 53 | 100 | 56 | 100 | 43 | 100 |
| Enumclaw City Jail | 4 | 15 | 6 | 15 | 5 | 15 | 4 | 15 | 2 | 15 | 3 | 15 |
| Ferry County Violation Facility | 0 | 2 | 0 | 2 | 0 | 2 | 0 | 2 | 0 | 2 | 1 | 2 |
| Grant County Violation Facility | 18 | 15 | 17 | 15 | 13 | 15 | 22 | 15 | 22 | 15 | 25 | 15 |
| Geiger Correctional Center | 3 | 20 | 21 | 20 | 12 | 20 | 21 | 20 | 28 | 20 | 24 | 20 |
| Jefferson County Violation Facility | | | | | | | | | | | | |
| King County Violation Facility | 191 | 220 | 194 | 220 | 175 | 220 | 159 | 220 | 189 | 220 | 183 | 220 |
| Kitsap County Violation Facility | 49 | 60 | 47 | 60 | 49 | 60 | 46 | 60 | 46 | 60 | 45 | 60 |
| Lewis County Violation Facility | 63 | 85 | 65 | 85 | 74 | 85 | 64 | 85 | 57 | 85 | 49 | 85 |
| Nisqually Violation Facility | | | | | | | | | | | | |
| Okanagan County Violation Facility | 4 | 2 | 4 | 2 | 3 | 2 | 5 | 2 | 4 | 2 | 5 | 2 |
| Pierce County Violation Facility | 17 | 30 | 20 | 30 | 18 | 30 | 14 | 30 | 17 | 30 | 18 | 30 |
| Snohomish County Violation Facility | 106 | 200 | 102 | 200 | 86 | 200 | 92 | 200 | 101 | 200 | 76 | 200 |
| Spokane County Violation Facility | 8 | 10 | 11 | 10 | 13 | 10 | 12 | 10 | 14 | 10 | 12 | 10 |
| Stevens County Violation Facility | 0 | 2 | 0 | 2 | 0 | 2 | 0 | 2 | 0 | 2 | 0 | 2 |
| Walla Walla Violation Facility | 9 | 15 | 13 | 15 | 10 | 15 | 9 | 15 | 11 | 15 | 15 | 15 |
| Wapato Violation Facility | | | | | | | | | | | | |
| Yakima County Violation Facility | 56 | 40 | 46 | 40 | 42 | 40 | 41 | 40 | 43 | 40 | 59 | 40 |
| TOTAL IN-STATE RENTED BEDS 2/ | 796 | 1,006 | 791 | 1,016 | 752 | 1,016 | 746 | 1,016 | 801 | 1,016 | 750 | 1,016 |
| OUT OF STATE RENTED BEDS 3/ | 1,036 | 1,050 | 1,038 | 1,290 1/ | 1,164 | 1,290 | 1,230 | 1,290 | 1,220 | 1,290 | 1,207 | 1,290 |
| TOTAL | 17,595 | 16,604 | 17,635 | 16,854 | 17,531 | 17,134 | 17,585 | 17,134 | 17,616 | 17,134 | 17,547 | 17,134 |

*NOTE: ADP subtotals may not add due to rounding. The ADP for prisons is calculated by summing the number of inmate days on IR (In-Residence), EL (Escorted Leave), CO (Court Order), and CJ (County Jail), then dividing by the number of days in the month.

**NOTE: Capacity as of the last day of the month. Capacity is defined as the number of persons the facility is designed to hold measured against space, staffing and program standards.

1/: Capacity has changed from previous month.

2/ Contracted beds space to house DOC offenders in County Jails.

3/ Capacity includes Arizona, Minnesota and Oklahoma rented beds.

**SUPPLEMENT TO TABLE 1A
AVERAGE DAILY POPULATION* AND CAPACITY**
BY MONTH FOR FISCAL YEAR 2008**

**BUDGET RESOURCE MANAGEMENT
DEPARTMENT OF CORRECTIONS**

| FACILITY | JAN | | FEB | | MAR | | APR | | MAY | | JUNE | |
|---|---------------|---------------|---------------|---------------|---------------|---------------|---------------|---------------|---------------|---------------|---------------|---------------|
| | ADP | CAP | ADP | CAP | ADP | CAP | ADP | CAP | ADP | CAP | ADP | CAP |
| Washington Corrections Center--RC | 1449 | 1008 | 1532 | 1008 | 1563 | 1,008 | 1593 | 1008 | 1,553 | 1,008 | 1,474 | 1,008 |
| Monroe Correctional Complex--WA State Reform | 726 | 632 | 724 | 632 | 750 | 632 | 741 | 632 | 744 | 632 | 750 | 632 |
| Monroe Correctional Complex--Twin Rivers Corr | 831 | 834 | 823 | 834 | 832 | 834 | 832 | 834 | 831 | 834 | 831 | 834 |
| Monroe Correctional Complex--Special Offender | 379 | 400 | 375 | 400 | 371 | 400 | 367 | 400 | 363 | 400 | 356 | 400 |
| Monroe Correctional Complex--IMU | 107 | 100 | 137 | 100 | 128 | 100 | 168 | 100 | 181 | 100 | 163 | 100 |
| Washington State Penitentiary | 985 | 807 | 966 | 807 | 960 | 807 | 983 | 807 | 1,140 | 1,203 | 1,257 | 1,203 |
| Washington State Penitentiary--Medium Security | 737 | 756 | 735 | 756 | 729 | 756 | 572 | 756 | 394 | 540 | 309 | 423 |
| Washington State Penitentiary--IMU | 94 | 96 | 94 | 96 | 107 | 96 | 211 | 96 | 232 | 196 | 246 | 196 |
| Washington Corrections Center/Women | 544 | 466 | 536 | 466 | 532 | 466 | 519 | 466 | 506 | 466 | 521 | 466 |
| Washington Corrections Center--TC | 244 | 228 | 245 | 228 | 248 | 228 | 248 | 228 | 246 | 228 | 247 | 228 |
| Washington Corrections Center--IMU | 112 | 62 | 120 | 62 | 119 | 62 | 111 | 62 | 108 | 62 | 106 | 62 |
| McNeil Island Corrections Center | 994 | 993 | 1000 | 993 | 992 | 993 | 1002 | 993 | 998 | 993 | 994 | 993 |
| McNeil Island Corrections Center--IMU | 36 | 43 | 36 | 43 | 30 | 43 | 29 | 43 | 27 | 43 | 30 | 43 |
| Clallam Bay Corrections Center | 454 | 396 | 455 | 396 | 472 | 396 | 451 | 396 | 425 | 396 | 431 | 396 |
| Clallam Bay Corrections Center--MSC | 372 | 400 | 374 | 400 | 365 | 400 | 379 | 400 | 383 | 400 | 387 | 400 |
| Clallam Bay Corrections Center--IMU | 57 | 62 | 57 | 62 | 57 | 62 | 58 | 62 | 54 | 62 | 54 | 62 |
| Airway Heights Corrections Center--Medium Sec | 1580 | 1536 | 1571 | 1536 | 1577 | 1,536 | 1567 | 1536 | 1,565 | 1,536 | 1,582 | 1,536 |
| Stafford Creek Corrections Center | 1731 | 1864 | 1719 | 1864 | 1723 | 1,864 | 1776 | 1864 | 1,849 | 1,864 | 1,869 | 1,864 |
| Stafford Creek Corrections Center--IMU | 82 | 72 | 84 | 72 | 89 | 72 | 62 | 72 | 75 | 72 | 83 | 72 |
| SUBTOTAL | 11,514 | 10,755 | 11,582 | 10,755 | 11,642 | 10,755 | 11,671 | 10,755 | 11,676 | 11,035 | 11,690 | 10,918 |
| Monroe Correctional Complex--WSR Minimum | 395 | 480 | 409 | 480 | 396 | 480 | 381 | 480 | 431 | 480 | 446 | 480 |
| Wash State Pen--Minimum Security Unit | 176 | 166 | 175 | 166 | 174 | 166 | 183 | 166 | 179 | 166 | 183 | 166 |
| McNeil Island Corrections Center/Minimum Security | 261 | 256 | 254 | 256 | 257 | 256 | 252 | 256 | 263 | 256 | 263 | 256 |
| Olympic Corrections Center | 374 | 340 | 367 | 340 | 363 | 340 | 363 | 340 | 369 | 340 | 367 | 340 |
| Larch Corrections Center | 399 | 400 | 399 | 400 | 406 | 400 | 394 | 400 | 389 | 400 | 391 | 400 |
| Cedar Creek Corrections Center | 400 | 400 | 402 | 400 | 404 | 400 | 402 | 400 | 393 | 400 | 397 | 400 |
| Coyote Ridge Corrections Center | 612 | 600 | 613 | 600 | 611 | 600 | 610 | 600 | 611 | 600 | 615 | 600 |
| Wash Corr Center/Women--Minimum Security | 347 | 272 | 342 | 272 | 338 | 272 | 346 | 272 | 360 | 272 | 349 | 272 |
| Airway Heights Corrections Center--Minimum Sec | 512 | 600 | 511 | 600 | 511 | 600 | 524 | 600 | 574 | 600 | 587 | 600 |
| Mission Creek Corrections Center --Women | 78 | 80 | 85 | 200 1/ | 95 | 200 | 98 | 200 | 107 | 200 | 124 | 200 |
| Ahtanum View Corrections Center | 115 | 120 | 117 | 120 | 119 | 120 | 123 | 120 | 123 | 120 | 122 | 120 |
| Pine Lodge Corrections Center for Women | 373 | 359 | 363 | 359 | 359 | 359 | 354 | 359 | 342 | 359 | 329 | 359 |
| SUBTOTAL | 4,042 | 4,073 | 4,037 | 4,193 | 4,032 | 4,193 | 4,029 | 4,193 | 4,140 | 4,193 | 4,172 | 4,193 |
| CONFINEMENT FACILITY TOTAL | 15,556 | 14,828 | 15,619 | 14,948 | 15,675 | 14,948 | 15,700 | 14,948 | 15,816 | 15,228 | 15,861 | 15,111 |
| IN-STATE RENTED BEDS | | | | | | | | | | | | |
| Asotin County Violation Facility | | | 0 | 5 1/ | 0 | 5 | 0 | 5 | 0 | 5 | 0 | 5 |
| Benton County Violation Facility | 116 | 120 | 112 | 120 | 116 | 120 | 118 | 120 | 119 | 120 | 121 | 120 |
| Chelan County Violation Facility | 22 | 10 | 23 | 10 | 15 | 10 | 26 | 10 | 26 | 10 | 16 | 10 |
| City of Toppenish | 0 | 10 | 0 | 10 | 0 | 10 | 0 | 10 | 0 | 10 | 0 | 10 |
| Clark County Violation Facility | 66 | 60 | 83 | 60 | 79 | 60 | 72 | 60 | 61 | 60 | 71 | 60 |
| Cowlitz County Violation Facility | 59 | 100 | 54 | 100 | 48 | 100 | 60 | 100 | 47 | 100 | 49 | 100 |
| Enumclaw City Jail | 2 | 15 | 4 | 15 | 5 | 15 | 5 | 15 | 6 | 15 | 4 | 15 |
| Ferry County Violation Facility | 2 | 2 | 4 | 2 | 2 | 2 | 2 | 2 | 3 | 2 | 2 | 2 |
| Grant County Violation Facility | 22 | 15 | 19 | 15 | 24 | 15 | 20 | 15 | 15 | 15 | 16 | 15 |
| Geiger Correctional Center | 27 | 20 | 22 | 20 | 29 | 20 | 28 | 20 | 20 | 20 | 24 | 20 |
| Jefferson County Violation Facility | | | | | | | 0 | 4 | 0 | 4 | 0 | 4 |
| King County Violation Facility | 194 | 220 | 190 | 220 | 174 | 220 | 170 | 220 | 171 | 220 | 177 | 220 |
| Kitsap County Violation Facility | 46 | 60 | 44 | 60 | 45 | 60 | 46 | 60 | 46 | 60 | 46 | 60 |
| Lewis County Violation Facility | 65 | 85 | 71 | 85 | 61 | 85 | 56 | 85 | 54 | 85 | 60 | 85 |
| Nisqually Violation Facility | | | | | 13 | 30 | 24 | 30 | 22 | 30 | 23 | 30 |
| Okanagan County Violation Facility | 7 | 2 | 3 | 2 | 7 | 2 | 3 | 2 | 3 | 2 | 0 | 2 |
| Pierce County Violation Facility | 16 | 30 | 21 | 30 | 26 | 30 | 26 | 30 | 22 | 30 | 20 | 30 |
| Snohomish County Violation Facility | 93 | 200 | 96 | 100 1/ | 100 | 200 | 89 | 200 | 85 | 200 | 76 | 200 |
| Spokane County Violation Facility | 11 | 10 | 10 | 10 | 12 | 10 | 7 | 10 | 6 | 10 | 8 | 10 |
| Stevens County Violation Facility | 0 | 2 | 0 | 2 | 0 | 2 | 0 | 2 | 0 | 2 | 0 | 2 |
| Walla Walla Violation Facility | 15 | 15 | 17 | 15 | 11 | 15 | 10 | 15 | 10 | 15 | 5 | 15 |
| Wapato Violation Facility | | | | | 0 | 15 | 0 | 15 | 0 | 15 | 0 | 15 |
| Yakima County Violation Facility | 92 | 40 | 101 | 60 1/ | 124 | 60 | 118 | 60 | 124 | 40 | 117 | 60 |
| TOTAL IN-STATE RENTED BEDS 2/ | 855 | 1,016 | 874 | 941 1/ | 892 | 1,086 | 878 | 1,090 | 844 | 1,070 | 834 | 1,090 |
| OUT OF STATE RENTED BEDS 3/ | 1200 | 1290 | 1,191 | 1,290 | 1179 | 1,290 | 1168 | 1,290 | 1,160 | 1,290 | 1,137 | 1,290 |
| TOTAL | 17611 | 17134 | 17,685 | 17,179 | 17,746 | 17,324 | 17746 | 17328 | 17,819 | 17,588 | 17,832 | 17,491 |

*NOTE: ADP subtotals may not add due to rounding. The ADP for prisons is calculated by summing the number of inmate days on IR (In-Residence), EL (Escorted Leave), CO (Court Order), and CJ (County Jail), then dividing by the number of days in the month.

**NOTE: Capacity as of the last day of the month. Capacity is defined as the number of persons the facility is designed to hold measured against space, staffing and program standards.

1/: Capacity has changed from previous month.

2/ Contracted beds space to house DOC offenders in County Jails.

3/ Capacity includes Arizona, Minnesota and Oklahoma rented beds.

**TABLE 1B
FEMALE INMATE AVERAGE DAILY POPULATION* AND CAPACITY**
BY MONTH FOR FISCAL YEAR 2008**

**BUDGET RESOURCE MANAGEMENT
DEPARTMENT OF CORRECTIONS**

| FACILITY | JUL | | AUG | | SEP | | OCT | | NOV | | DEC | |
|--|--------------|--------------|--------------|--------------|--------------|--------------|--------------|--------------|--------------|--------------|--------------|--------------|
| | ADP | CAP | ADP | CAP | ADP | CAP | ADP | CAP | ADP | CAP | ADP | CAP |
| Washington Corrections Center--Reception | | | | | | | | | | | | |
| Washington Corrections Center--Institution | | | | | | | | | | | | |
| Washington Corrections Center/Women | 554 | 466 | 551 | 466 | 518 | 466 | 525 | 466 | 531 | 466 | 537 | 466 |
| Washington State Penitentiary | | | | | | | | | | | | |
| Monroe Correctional Complex | | | | | | | | | | | | |
| McNeil Island Corrections Center | | | | | | | | | | | | |
| Clallam Bay Corrections Center | | | | | | | | | | | | |
| Airway Heights Corrections Center | | | | | | | | | | | | |
| MAJOR INSTITUTION TOTAL | 554 | 466 | 551 | 466 | 518 | 466 | 525 | 466 | 531 | 466 | 537 | 466 |
| Larch Corrections Center | | | | | | | | | | | | |
| Cedar Creek Corrections Center | | | | | | | | | | | | |
| Olympic Corrections Center | | | | | | | | | | | | |
| Coyote Ridge Corrections Center | | | | | | | | | | | | |
| Washington Corrections Center/Women--Min | 331 | 272 | 337 | 272 | 329 | 272 | 323 | 272 | 318 | 272 | 329 | 272 |
| Ahtanum View Corrections Center | | | | | | | | | | | | |
| Mission Creek Corrections Center --Women | 100 | 80 | 106 | 80 | 113 | 80 | 112 | 80 | 113 | 80 | 92 | 80 |
| Pine Lodge Corrections Center for Women | 376 | 359 | 356 | 359 | 388 | 359 | 403 | 359 | 402 | 359 | 388 | 359 |
| MINOR INSTITUTION TOTAL | 807 | 711 | 799 | 711 | 830 | 711 | 839 | 711 | 833 | 711 | 809 | 711 |
| CONFINEMENT FACILITY TOTAL | 1,361 | 1,177 | 1,349 | 1,177 | 1,348 | 1,177 | 1,364 | 1,177 | 1,364 | 1,177 | 1,346 | 1,177 |
| Work Release, Inmates | 117 | | 123 | | 118 | | 107 | | 105 | | 103 | |
| Work Release, CCI | 1 | | 1 | | 1 | | 2 | | 1 | | 2 | |
| Work Release Total | 119 | 107 | 123 | 107 | 118 | 107 | 109 | 107 | 106 | 107 | 105 | 107 |
| GRAND TOTAL | 1,480 | 1,284 | 1,472 | 1,284 | 1,466 | 1,284 | 1,473 | 1,284 | 1,470 | 1,284 | 1,451 | 1,284 |
| IN-STATE RENTED BEDS | | | | | | | | | | | | |
| Asotin County Violation Facility | | | | | | | | | | | | |
| Benton County Violation Facility | 3 | 20 | 3 | 20 | 4 | 20 | 5 | 20 | 7 | 20 | 3 | 20 |
| Chelan County Violation Facility | 5 | 1 | 5 | 1 | 3 | 1 | 4 | 1 | 4 | 1 | 5 | 1 |
| Clark County Violation Facility | 7 | 9 | 7 | 9 | 10 | 9 | 8 | 9 | 5 | 9 | 10 | 9 |
| Cowlitz County Violation Facility | 12 | 15 | 9 | 15 | 7 | 15 | 10 | 15 | 11 | 15 | 9 | 15 |
| Enumclaw City Jail | 0 | 1 | 0 | 1 | 0 | 1 | 0 | 1 | 0 | 1 | 0 | 1 |
| Ferry County Violation Facility | 0 | | 0 | | 0 | | 0 | | 0 | | 0 | |
| Grant County Violation Facility | 2 | 1 | 4 | 1 | 3 | 1 | 4 | 1 | 3 | 1 | 3 | 1 |
| Geiger Correctional Center | 0 | 2 | 0 | 2 | 0 | 2 | 0 | 2 | 0 | 2 | 0 | 2 |
| Jefferson County Violation Facility | | | | | | | | | | | | |
| King County Violation Facility | 52 | 30 | 60 | 30 | 43 | 30 | 43 | 30 | 44 | 30 | 45 | 30 |
| Kitsap County Violation Facility | 15 | 9 | 10 | 9 | 17 | 9 | 13 | 9 | 10 | 9 | 13 | 9 |
| Lewis County Violation Facility | 7 | 12 | 4 | 12 | 3 | 12 | 5 | 12 | 7 | 12 | 3 | 12 |
| Okanagan County Violation Facility | 1 | | 0 | | 0 | | 2 | | 1 | | 1 | |
| Pierce County Violation Facility | 4 | 5 | 2 | 5 | 2 | 5 | 2 | 5 | 4 | 5 | 2 | 5 |
| Snohomish County Violation Facility | 8 | 30 | 6 | 30 | 9 | 30 | 7 | 30 | 7 | 30 | 10 | 30 |
| Spokane County Violation Facility | 1 | 1 | 1 | 1 | 1 | 1 | 1 | 1 | 2 | 1 | 1 | 1 |
| Walla Walla Violation Facility | 1 | 1 | 3 | 1 | 2 | 1 | 1 | 1 | 1 | 1 | 1 | 1 |
| Yakima County Violation Facility | 8 | 6 | 7 | 6 | 5 | 6 | 4 | 6 | 7 | 6 | 7 | 6 |
| TOTAL IN-STATE RENTED BEDS 2/ | 124 | 143 | 121 | 143 | 110 | 143 | 108 | 143 | 112 | 143 | 112 | 143 |
| GRAND TOTAL | 1604 | 1427 | 1,593 | 1427 | 1,576 | 1,427 | 1,581 | 1,427 | 1,582 | 1,427 | 1,563 | 1,427 |

*NOTE: ADP subtotals may not add due to rounding. The ADP for prisons is calculated by summing the number of inmate days on IR (In-Residence), EL (Escorted Leave), CO (Court Order), and CJ (County Jail), then dividing by the number of days in the month.

**NOTE: Capacity as of the last day of the month. Capacity is defined as the number of persons the facility is designed to hold measured against space, staffing and program standards.

1/: Capacity has changed from previous month.

2/ Contracted beds space to house DOC offenders in County Jails.

**TABLE 1B
FEMALE INMATE AVERAGE DAILY POPULATION* AND CAPACITY**
BY MONTH FOR FISCAL YEAR 2008**

**BUDGET RESOURCE MANAGEMENT
DEPARTMENT OF CORRECTIONS**

| FACILITY | JAN | | FEB | | MAR | | APR | | MAY | | JUNE | |
|--|-------------|-------------|--------------|--------------|--------------|--------------|--------------|--------------|--------------|--------------|--------------|--------------|
| | ADP | CAP | ADP | CAP | ADP | CAP | ADP | CAP | ADP | CAP | ADP | CAP |
| Washington Corrections Center--Reception | | | | | | | | | | | | |
| Washington Corrections Center--Institution | | | | | | | | | | | | |
| Washington Corrections Center/Women | 544 | 466 | 536 | 466 | 532 | 466 | 519 | 466 | 506 | 466 | 521 | 466 |
| Washington State Penitentiary | | | | | | | | | | | | |
| Monroe Correctional Complex | | | | | | | | | | | | |
| McNeil Island Corrections Center | | | | | | | | | | | | |
| Clallam Bay Corrections Center | | | | | | | | | | | | |
| Airway Heights Corrections Center | | | | | | | | | | | | |
| MAJOR INSTITUTION TOTAL | 544 | 466 | 536 | 466 | 532 | 466 | 519 | 466 | 506 | 466 | 521 | 466 |
| Larch Corrections Center | | | | | | | | | | | | |
| Cedar Creek Corrections Center | | | | | | | | | | | | |
| Olympic Corrections Center | | | | | | | | | | | | |
| Coyote Ridge Corrections Center | | | | | | | | | | | | |
| Washington Corrections Center/Women--Min | 347 | 272 | 342 | 272 | 338 | 272 | 346 | 272 | 360 | 272 | 350 | 272 |
| Ahtanum View Corrections Center | | | | | | | | | | | | |
| Mission Creek Corrections Center --Women | 78 | 80 | 85 | 80 | 95 | 200 | 98 | 200 | 107 | 200 | 124 | 200 |
| Pine Lodge Corrections Center for Women | 373 | 359 | 363 | 359 | 359 | 359 | 354 | 359 | 342 | 359 | 329 | 359 |
| MINOR INSTITUTION TOTAL | 798 | 711 | 790 | 711 | 792 | 831 | 797 | 831 | 808 | 831 | 803 | 831 |
| CONFINEMENT FACILITY TOTAL | 798 | 711 | 1,326 | 1,177 | 1,323 | 1,297 | 1,316 | 1,297 | 1,314 | 1,297 | 1,324 | 1,297 |
| Work Release, Inmates | 103 | | 102 | | 102 | | 94 | | 97 | | 99 | |
| Work Release, CCI | 4 | | 6 | | 3 | | 0 | | 1 | | 2 | |
| Work Release Total | 107 | 107 | 108 | 107 | 105 | 107 | 94 | 107 | 98 | 107 | 100 | 107 |
| GRAND TOTAL | 1449 | 1284 | 1,434 | 1,284 | 1,429 | 1,404 | 1,411 | 1,404 | 1,413 | 1,404 | 1,424 | 1,404 |

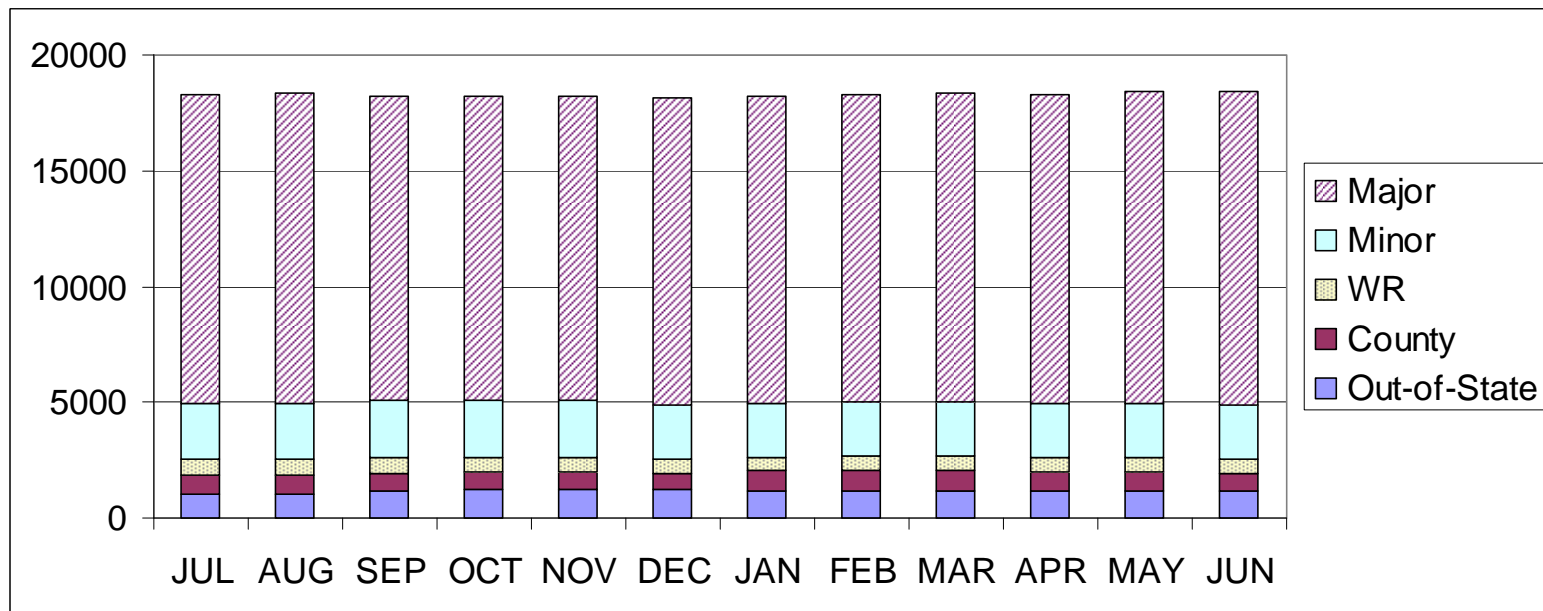
IN-STATE RENTED BEDS

| | | | | | | | | | | | | |
|--------------------------------------|--------------|--------------|--------------|--------------|--------------|--------------|--------------|--------------|--------------|--------------|--------------|--------------|
| Asotin County Violation Facility | | | | | | | | | | | | |
| Benton County Violation Facility | 7 | 20 | 8 | 20 | 9 | 20 | 5 | 20 | 8 | 20 | 7 | 20 |
| Chelan County Violation Facility | 4 | 1 | 6 | 1 | 6 | 1 | 5 | 1 | 4 | 1 | 4 | 1 |
| Clark County Violation Facility | 9 | 9 | 11 | 9 | 15 | 9 | 8 | 9 | 5 | 9 | 9 | 9 |
| Cowlitz County Violation Facility | 11 | 15 | 9 | 15 | 6 | 15 | 12 | 15 | 10 | 15 | 6 | 15 |
| Enumclaw City Jail | 0 | 1 | 0 | 1 | 0 | 1 | 0 | 1 | 0 | 1 | 0 | 1 |
| Ferry County Violation Facility | 0 | | 0 | | 0 | | 0 | | 0 | | 0 | |
| Grant County Violation Facility | 4 | 1 | 2 | 1 | 3 | 1 | 4 | 1 | 2 | 1 | 2 | 1 |
| Geiger Correctional Center | 0 | 2 | 0 | 2 | 0 | 2 | 0 | 2 | 0 | 2 | 0 | 2 |
| Jefferson County Violation Facility | | | | | | | | | | | | |
| King County Violation Facility | 49 | 30 | 45 | 30 | 43 | 30 | 46 | 30 | 41 | 30 | 40 | 30 |
| Kitsap County Violation Facility | 14 | 9 | 12 | 9 | 14 | 9 | 16 | 9 | 15 | 9 | 11 | 9 |
| Lewis County Violation Facility | 3 | 12 | 7 | 12 | 6 | 12 | 4 | 12 | 6 | 12 | 5 | 12 |
| Okanagan County Violation Facility | 1 | | 1 | | 1 | 0 | 0 | 0 | 0 | 0 | 0 | 0 |
| Pierce County Violation Facility | 3 | 5 | 2 | 5 | 4 | 5 | 4 | 5 | 3 | 5 | 3 | 5 |
| Snohomish County Violation Facility | 12 | 30 | 7 | 15 | 9 | 30 | 10 | 30 | 8 | 30 | 7 | 30 |
| Spokane County Violation Facility | 1 | 1 | 1 | 1 | 2 | 1 | 0 | 1 | 0 | 1 | 1 | 1 |
| Walla Walla Violation Facility | 2 | 1 | 4 | 1 | 1 | 1 | 1 | 1 | 2 | 1 | 1 | 1 |
| Yakima County Violation Facility | 10 | 6 | 6 | 6 | 8 | 6 | 8 | 6 | 9 | 6 | 11 | 6 |
| TOTAL IN-STATE RENTED BEDS 2/ | 131 | 143 | 121 | 128 | 127 | 143 | 122 | 145 | 115 | 145 | 107 | 145 |
| GRAND TOTAL | 1,580 | 1,427 | 1,555 | 1,412 | 1,556 | 1,547 | 1,533 | 1,549 | 1,528 | 1,549 | 1,531 | 1,549 |

*NOTE: ADP subtotals may not add due to rounding. The ADP for prisons is calculated by summing the number of inmate days on IR (In-Residence), EL (Escorted Leave), CO (Court Order), and CJ (County Jail), then dividing by the number of days in the month.

**NOTE: Capacity as of the last day of the month. Capacity is defined as the number of persons the facility is designed to hold measured against space, staffing and program standards.
1/: Capacity has changed from previous month.
2/ Contracted beds space to house DOC offenders in County Jails.

**CHART 1:
AVERAGE DAILY POPULATION PER MONTH BY TYPE OF FACILITY
FISCAL YEAR 2007**





**STATE OF WASHINGTON
DEPARTMENT OF CORRECTIONS
ADULT CORRECTIONS FACILITIES**

**CHARACTERISTICS OF RESIDENTS
FACILITIES AND WORK RELEASE**

**TABLE 2A
RESIDENT OFFENDERS WITHIN FACILITIES AND WORK RELEASE
LOCATION BY RACE AND HISPANIC ORIGIN
AS OF JUNE 30, 2008**

| PRISON | TOTAL | RACE | | | | | | | | | | | | | | | |
|--------------------|--------|--------|------|-------|------|-------------|-----|------------|-----|--------|-----|----------|-----|-------|-----|---------|-----|
| | | WHITE | | BLACK | | N.A. INDIAN | | ASIAN/P.I. | | ESKIMO | | ALEUTIAN | | OTHER | | UNKNOWN | |
| | | N | % | N | % | N | % | N | % | N | % | N | % | N | % | N | % |
| TOTAL | 17,456 | 12,366 | 70.8 | 3,488 | 20 | 843 | 4.8 | 574 | 3.3 | 2 | 0 | 3 | 0 | 141 | 0.8 | 39 | 0.2 |
| WCC | 1,803 | 1,295 | 71.8 | 347 | 19.2 | 87 | 4.8 | 62 | 3.4 | | | 1 | 0.1 | 11 | 0.6 | | |
| WCC WOMEN | 866 | 603 | 69.6 | 151 | 17.4 | 58 | 6.7 | 25 | 2.9 | | | | | 28 | 3.2 | 1 | 0.1 |
| WASH. PENITENTIARY | 2,037 | 1,418 | 69.6 | 441 | 21.6 | 100 | 4.9 | 65 | 3.2 | | | | | 11 | 0.5 | 2 | 0.1 |
| MCNEIL ISLAND | 1,288 | 886 | 68.8 | 285 | 22.1 | 55 | 4.3 | 47 | 3.6 | 1 | 0.1 | | | 8 | 0.6 | 6 | 0.5 |
| MONROE COMPLEX | 2,549 | 1,765 | 69.2 | 566 | 22.2 | 106 | 4.2 | 89 | 3.5 | | | | | 18 | 0.7 | 5 | 0.2 |
| CLALLAM BAY | 875 | 572 | 65.4 | 200 | 22.9 | 46 | 5.3 | 46 | 5.3 | | | | | 7 | 0.8 | 4 | 0.5 |
| AIRWAY HEIGHTS | 2,162 | 1,615 | 74.7 | 357 | 16.5 | 103 | 4.8 | 62 | 2.9 | | | 1 | 0 | 13 | 0.6 | 11 | 0.5 |
| STAFFORD CREEK | 1,977 | 1,398 | 70.7 | 415 | 21 | 78 | 3.9 | 71 | 3.6 | | | | | 8 | 0.4 | 7 | 0.4 |
| LARCH | 392 | 303 | 77.3 | 64 | 16.3 | 13 | 3.3 | 11 | 2.8 | | | | | 1 | 0.3 | | |
| CEDAR CREEK | 399 | 271 | 67.9 | 85 | 21.3 | 21 | 5.3 | 22 | 5.5 | | | | | | | | |
| OLYMPIC | 369 | 268 | 72.6 | 66 | 17.9 | 17 | 4.6 | 17 | 4.6 | | | | | | | 1 | 0.3 |
| COYOTE RIDGE | 607 | 448 | 73.8 | 114 | 18.8 | 26 | 4.3 | 17 | 2.8 | | | | | 2 | 0.3 | | |
| PINE LODGE CCW | 322 | 262 | 81.4 | 27 | 8.4 | 18 | 5.6 | 4 | 1.2 | 1 | 0.3 | | | 10 | 3.1 | | |
| AHTANUM VIEW | 120 | 98 | 81.7 | 15 | 12.5 | 5 | 4.2 | 1 | 0.8 | | | | | | | 1 | 0.8 |
| MISSION CREEK-W | 139 | 113 | 81.3 | 12 | 8.6 | 9 | 6.5 | 3 | 2.2 | | | | | 2 | 1.4 | | |
| WORK RELEASE | 613 | 444 | 72.4 | 116 | 18.9 | 27 | 4.4 | 16 | 2.6 | | | | | 10 | 1.6 | | |
| COUNTY FACILITY | 938 | 607 | 64.7 | 227 | 24.2 | 74 | 7.9 | 16 | 1.7 | | | 1 | 0.1 | 12 | 1.3 | 1 | 0.1 |

| HISPANIC ORIGIN | | | | | |
|-----------------|------|--------------|------|---------|------|
| HISPANIC | | NON-HISPANIC | | UNKNOWN | |
| N | % | N | % | N | % |
| 1,790 | 10.3 | 15,175 | 86.9 | 491 | 2.8 |
| 214 | 11.9 | 1,529 | 84.8 | 60 | 3.3 |
| 87 | 10 | 763 | 88.1 | 16 | 1.8 |
| 283 | 13.9 | 1,720 | 84.4 | 34 | 1.7 |
| 144 | 11.2 | 1,121 | 87 | 23 | 1.8 |
| 161 | 6.3 | 2,329 | 91.4 | 59 | 2.3 |
| 112 | 12.8 | 746 | 85.3 | 17 | 1.9 |
| 293 | 13.6 | 1,805 | 83.5 | 64 | 3 |
| 194 | 9.8 | 1,738 | 87.9 | 45 | 2.3 |
| 20 | 5.1 | 365 | 93.1 | 7 | 1.8 |
| 16 | 4 | 377 | 94.5 | 6 | 1.5 |
| 21 | 5.7 | 343 | 93 | 5 | 1.4 |
| 81 | 13.3 | 516 | 85 | 10 | 1.6 |
| 36 | 11.2 | 280 | 87 | 6 | 1.9 |
| 8 | 6.7 | 109 | 90.8 | 3 | 2.5 |
| 10 | 7.2 | 129 | 92.8 | | |
| 27 | 4.4 | 561 | 91.5 | 25 | 4.1 |
| 83 | 8.8 | 744 | 79.3 | 111 | 11.8 |

THE DEPARTMENT IS ALSO LEGALLY RESPONSIBLE FOR INMATES
HOUSED OUT OF STATE. THE TOTAL NUMBER OF INMATES
FOR WHOM THE DEPARTMENT IS RESPONSIBLE IS 18,551

**TABLE 2A-1
RESIDENT OFFENDERS WITHIN FACILITIES AND WORK RELEASE
LOCATION BY MILITARY SERVICE
AS OF JUNE 30, 2008**

| PRISON | TOTAL | MILITARY SERVICE | | | | | | | | | | | | | | | | | | | |
|--------------------|-------|------------------|------|------|------|------|-----|-----------|-----|----------------|-----|-------------|-----|--------------|-----|-------------|-----|-----------------|-----|---------|-----|
| | | NONE | | ARMY | | NAVY | | AIR FORCE | | NATIONAL GUARD | | COAST GUARD | | MARINE CORPS | | > 1 SERVICE | | FOREIGN SERVICE | | UNKNOWN | |
| | | N | % | N | % | N | % | N | % | N | % | N | % | N | % | N | % | N | % | N | % |
| TOTAL | 8,834 | 7,938 | 89.9 | 422 | 4.8 | 180 | 2.0 | 74 | 0.8 | 48 | 0.5 | 5 | 0.1 | 100 | 1.1 | 1 | 0.0 | 7 | 0.1 | 59 | 0.7 |
| WCC | 705 | 650 | 92.2 | 27 | 3.8 | 11 | 1.6 | 3 | 0.4 | 3 | 0.4 | . | . | 8 | 1.1 | . | . | . | . | 3 | 0.4 |
| WCC WOMEN | 232 | 226 | 97.4 | . | . | . | . | 1 | 0.4 | 1 | 0.4 | . | . | . | . | . | . | . | . | 4 | 1.7 |
| WASH. PENITENTIARY | 1,110 | 1,021 | 92 | 42 | 3.8 | 16 | 1.4 | 6 | 0.5 | 3 | 0.3 | . | . | 12 | 1.1 | . | . | . | . | 10 | 0.9 |
| MCNEIL ISLAND | 740 | 649 | 87.7 | 42 | 5.7 | 19 | 2.6 | 7 | 0.9 | 4 | 0.5 | . | . | 13 | 1.8 | . | . | 1 | 0.1 | 5 | 0.7 |
| MONROE COMPLEX | 1,440 | 1,238 | 86 | 90 | 6.3 | 44 | 3.1 | 20 | 1.4 | 13 | 0.9 | 2 | 0.1 | 23 | 1.6 | . | . | 3 | 0.2 | 7 | 0.5 |
| CLALLAM BAY | 433 | 405 | 93.5 | 13 | 3 | 1 | 0.2 | 1 | 0.2 | 1 | 0.2 | 1 | 0.2 | 6 | 1.4 | . | . | . | . | 5 | 1.2 |
| AIRWAY HEIGHTS | 1,111 | 978 | 88 | 71 | 6.4 | 33 | 3 | 9 | 0.8 | 8 | 0.7 | 1 | 0.1 | 8 | 0.7 | . | . | . | . | 3 | 0.3 |
| STAFFORD CREEK | 1,137 | 990 | 87.1 | 56 | 4.9 | 37 | 3.3 | 17 | 1.5 | 10 | 0.9 | 1 | 0.1 | 14 | 1.2 | 1 | 0.1 | 2 | 0.2 | 9 | 0.8 |
| LARCH | 223 | 206 | 92.4 | 9 | 4 | 3 | 1.3 | 2 | 0.9 | . | . | . | . | 2 | 0.9 | . | . | . | . | 1 | 0.4 |
| CEDAR CREEK | 233 | 216 | 92.7 | 7 | 3 | 3 | 1.3 | . | . | 3 | 1.3 | . | . | 1 | 0.4 | . | . | . | . | 3 | 1.3 |
| OLYMPIC | 196 | 180 | 91.8 | 9 | 4.6 | 2 | 1 | 2 | 1 | 1 | 0.5 | . | . | 2 | 1 | . | . | . | . | . | . |
| COYOTE RIDGE | 425 | 392 | 92.2 | 21 | 4.9 | 3 | 0.7 | 1 | 0.2 | . | . | . | . | 5 | 1.2 | . | . | . | . | 3 | 0.7 |
| PINE LODGE CCW | 46 | 45 | 97.8 | . | . | . | . | . | . | . | . | . | . | . | . | . | . | . | . | 1 | 2.2 |
| AHTANUM VIEW | 89 | 66 | 74.2 | 13 | 14.6 | 3 | 3.4 | 4 | 4.5 | . | . | . | . | 3 | 3.4 | . | . | . | . | . | . |
| MISSION CREEK-W | 25 | 25 | 100 | . | . | . | . | . | . | . | . | . | . | . | . | . | . | . | . | . | . |
| WORK RELEASE | 318 | 301 | 94.7 | 11 | 3.5 | 1 | 0.3 | . | . | . | . | . | . | 1 | 0.3 | . | . | . | . | 4 | 1.3 |
| COUNTY FACILITY | 371 | 350 | 94.3 | 11 | 3 | 4 | 1.1 | 1 | 0.3 | 1 | 0.3 | . | . | 2 | 0.5 | . | . | 1 | 0.3 | 1 | 0.3 |

THE DEPARTMENT IS ALSO LEGALLY RESPONSIBLE FOR INMATES
HOUSED OUT OF STATE. THE TOTAL NUMBER OF INMATES
FOR WHOM THE DEPARTMENT IS RESPONSIBLE IS 18,551
THIS TABLE CONTAINS ONLY POPULATION WITH MILITARY INFORMATION ON THE DT04.

TABLE 2B
RESIDENT OFFENDERS WITHIN FACILITIES AND WORK RELEASE
OFFENSE BY LOCATION
AS OF JUNE 30, 2008

| OFFENSE | TOTAL | PRISON | | | | | | | | | | | | | | | | | % OF TOTAL |
|---------------------|--------|--------|-----------|---------------------|---------------|----------------|-------------|-----------------|----------------|-------|-------------|---------|--------------|----------------|--------------|-----------------|--------------|-----------------|------------|
| | | WCC | WCC WOMEN | WASH. PEN ITENTIARY | MCNEIL ISLAND | MONROE COMPLEX | CLALLAM BAY | AIRWAYS HEIGHTS | STAFFORD CREEK | LARCH | CEDAR CREEK | OLYMPIC | COYOTE RIDGE | PINE LODGE CCW | AHTANUM VIEW | MISSION CREEK-W | WORK RELEASE | COUNTY FACILITY | |
| TOTAL | 17,456 | 1,803 | 866 | 2,037 | 1,288 | 2,549 | 875 | 2,162 | 1,977 | 392 | 399 | 369 | 607 | 322 | 120 | 139 | 613 | 938 | 100 |
| MURDER 1 | 1,184 | 44 | 69 | 282 | 94 | 330 | 118 | 96 | 135 | 1 | 0 | 0 | 4 | 0 | 6 | 0 | 5 | 0 | 6.8 |
| MURDER 2 | 578 | 23 | 53 | 90 | 73 | 96 | 41 | 69 | 86 | 4 | 10 | 4 | 12 | 6 | 5 | 2 | 3 | 1 | 3.3 |
| MANSLAUGHTER 1 | 145 | 7 | 10 | 13 | 13 | 21 | 12 | 25 | 15 | 2 | 5 | 3 | 9 | 2 | 3 | 1 | 3 | 1 | 0.8 |
| MANSLAUGHTER 2 | 42 | 3 | 3 | 6 | 1 | 3 | 2 | 6 | 2 | 2 | 2 | 1 | 4 | 2 | 1 | 1 | 2 | 1 | 0.2 |
| VEH HOMICIDE | 151 | 8 | 13 | 17 | 17 | 17 | 7 | 22 | 15 | 3 | 6 | 4 | 6 | 4 | 3 | 2 | 6 | 1 | 0.9 |
| RAPE OF CHILD 1 | 785 | 69 | 7 | 55 | 99 | 182 | 33 | 157 | 161 | 6 | 2 | 0 | 1 | 0 | 10 | 0 | 0 | 3 | 4.5 |
| RAPE 1 | 307 | 6 | 3 | 43 | 52 | 84 | 22 | 33 | 61 | 1 | 0 | 0 | 0 | 0 | 2 | 0 | 0 | 0 | 1.8 |
| RAPE 2 | 185 | 20 | 1 | 15 | 18 | 50 | 14 | 38 | 28 | 1 | 0 | 0 | 0 | 0 | 0 | 0 | 0 | 0 | 1.1 |
| RAPE OTHER | 55 | 4 | 0 | 4 | 6 | 17 | 0 | 14 | 6 | 0 | 0 | 0 | 0 | 0 | 0 | 0 | 0 | 4 | 0.3 |
| RAPE OF CHILD 2 | 321 | 25 | 4 | 25 | 33 | 76 | 15 | 55 | 76 | 1 | 1 | 2 | 2 | 0 | 5 | 0 | 0 | 1 | 1.8 |
| VIO SEX, CHILD | 606 | 70 | 3 | 32 | 63 | 188 | 19 | 110 | 103 | 2 | 3 | 0 | 2 | 0 | 6 | 0 | 0 | 5 | 3.5 |
| IND LIBERTIES | 124 | 14 | 0 | 12 | 10 | 33 | 3 | 17 | 25 | 1 | 0 | 0 | 2 | 0 | 2 | 0 | 0 | 5 | 0.7 |
| NV SEX, CHILD | 423 | 47 | 6 | 19 | 51 | 86 | 13 | 71 | 80 | 4 | 2 | 5 | 6 | 2 | 1 | 0 | 4 | 26 | 2.4 |
| OTHER SEX CRIME | 487 | 55 | 4 | 50 | 55 | 82 | 24 | 95 | 69 | 8 | 6 | 11 | 13 | 0 | 3 | 0 | 2 | 10 | 2.8 |
| PUBLIC NUISANCE SEX | 35 | 4 | 0 | 2 | 3 | 8 | 1 | 5 | 4 | 0 | 0 | 3 | 1 | 1 | 0 | 0 | 1 | 2 | 0.2 |
| ROBBERY 1 | 1,279 | 80 | 44 | 247 | 96 | 210 | 103 | 143 | 149 | 20 | 39 | 23 | 46 | 21 | 4 | 4 | 32 | 18 | 7.3 |
| ROBBERY 2 | 389 | 45 | 23 | 64 | 19 | 77 | 18 | 38 | 27 | 13 | 4 | 9 | 12 | 2 | 1 | 1 | 15 | 21 | 2.2 |
| EXTORTION 1 | 9 | 0 | 1 | 1 | 1 | 1 | 2 | 1 | 2 | 0 | 0 | 0 | 0 | 0 | 0 | 0 | 0 | 0 | 0.1 |
| EXTORTION 2 | 5 | 0 | 0 | 0 | 0 | 2 | 0 | 0 | 0 | 0 | 1 | 1 | 0 | 0 | 0 | 0 | 0 | 1 | 0 |
| ASSAULT 1 | 543 | 26 | 34 | 86 | 65 | 95 | 35 | 74 | 73 | 9 | 12 | 12 | 10 | 2 | 4 | 2 | 3 | 1 | 3.1 |
| ASSAULT 2 | 1,009 | 99 | 38 | 178 | 56 | 135 | 79 | 102 | 104 | 22 | 31 | 15 | 42 | 14 | 8 | 7 | 24 | 55 | 5.8 |
| VEHICULR ASSAULT | 101 | 11 | 3 | 11 | 6 | 13 | 10 | 11 | 8 | 3 | 5 | 3 | 4 | 3 | 1 | 2 | 2 | 5 | 0.6 |
| ASSAULT OTHER | 1,649 | 204 | 53 | 204 | 94 | 170 | 93 | 205 | 194 | 61 | 76 | 51 | 82 | 10 | 11 | 9 | 85 | 47 | 9.4 |
| KIDNAP 1 | 33 | 3 | 2 | 3 | 1 | 5 | 5 | 6 | 5 | 0 | 2 | 0 | 0 | 0 | 1 | 0 | 0 | 0 | 0.2 |
| KIDNAP 2 | 29 | 7 | 1 | 2 | 2 | 3 | 1 | 2 | 2 | 2 | 2 | 0 | 1 | 1 | 0 | 0 | 0 | 3 | 0.2 |
| ARSON 1 | 35 | 2 | 3 | 9 | 2 | 2 | 5 | 3 | 3 | 3 | 0 | 0 | 1 | 0 | 0 | 0 | 1 | 1 | 0.2 |
| ARSON 2 | 18 | 4 | 0 | 3 | 4 | 2 | 1 | 1 | 0 | 0 | 0 | 0 | 1 | 1 | 0 | 0 | 0 | 1 | 0.1 |
| BURGLARY 1 | 180 | 16 | 6 | 36 | 15 | 16 | 9 | 27 | 12 | 3 | 5 | 2 | 10 | 7 | 1 | 1 | 10 | 4 | 1 |
| BURGLARY 2 | 1,002 | 139 | 38 | 97 | 67 | 89 | 35 | 141 | 89 | 48 | 36 | 42 | 75 | 16 | 12 | 7 | 60 | 11 | 5.7 |
| THEFT 1 | 372 | 39 | 45 | 35 | 28 | 27 | 17 | 42 | 37 | 9 | 7 | 16 | 10 | 25 | 2 | 7 | 22 | 4 | 2.1 |
| AUTO THEFT | 135 | 23 | 9 | 14 | 9 | 13 | 6 | 14 | 12 | 4 | 4 | 4 | 7 | 1 | 0 | 1 | 9 | 5 | 0.8 |
| FORGERY | 236 | 22 | 40 | 13 | 9 | 14 | 7 | 19 | 20 | 7 | 3 | 7 | 15 | 16 | 2 | 7 | 25 | 10 | 1.4 |
| OTHER PROPERTY | 703 | 127 | 31 | 89 | 31 | 42 | 25 | 84 | 55 | 27 | 26 | 40 | 38 | 13 | 6 | 11 | 40 | 18 | 4 |
| THEFT 2 | 203 | 23 | 23 | 17 | 12 | 14 | 4 | 24 | 10 | 11 | 2 | 7 | 4 | 3 | 4 | 4 | 25 | 6 | 1.2 |
| DRUG CRIME | 2,372 | 318 | 176 | 158 | 139 | 159 | 64 | 276 | 220 | 79 | 87 | 70 | 137 | 103 | 15 | 52 | 181 | 138 | 13.6 |
| OTHER FELONY | 190 | 37 | 13 | 31 | 4 | 20 | 16 | 23 | 20 | 3 | 2 | 3 | 7 | 3 | 0 | 0 | 3 | 5 | 1.1 |
| MISDEMEANANT | 5 | 0 | 0 | 2 | 1 | 1 | 0 | 0 | 0 | 0 | 1 | 0 | 0 | 0 | 0 | 0 | 0 | 0 | 0 |
| UNKNOWN | 1,531 | 179 | 107 | 72 | 39 | 166 | 16 | 113 | 69 | 32 | 17 | 31 | 43 | 53 | 2 | 18 | 50 | 524 | 8.8 |

TABLE 2C
WASHINGTON STATE OFFENDERS WITHIN FACILITIES AND WORK RELEASE
LOCATION BY VIOLENT CRIME CONVICTIONS
AS OF JUNE 30, 2008

| PRISON | TOTAL | VIOLENT | | | |
|--------------------|--------|---------|------|-------|------|
| | | NO | | YES | |
| | | N | % | N | % |
| TOTAL | 17,456 | 9,153 | 52.4 | 8,303 | 47.6 |
| WCC | 1,803 | 1,218 | 67.6 | 585 | 32.4 |
| WCC WOMEN | 866 | 541 | 62.5 | 325 | 37.5 |
| WASH. PENITENTIARY | 2,037 | 762 | 37.4 | 1,275 | 62.6 |
| MCNEIL ISLAND | 1,288 | 531 | 41.2 | 757 | 58.8 |
| MONROE COMPLEX | 2,549 | 839 | 32.9 | 1,710 | 67.1 |
| CLALLAM BAY | 875 | 307 | 35.1 | 568 | 64.9 |
| AIRWAY HEIGHTS | 2,162 | 1,091 | 50.5 | 1,071 | 49.5 |
| STAFFORD CREEK | 1,977 | 856 | 43.3 | 1,121 | 56.7 |
| LARCH | 392 | 294 | 75 | 98 | 25 |
| CEDAR CREEK | 399 | 261 | 65.4 | 138 | 34.6 |
| OLYMPIC | 369 | 288 | 78 | 81 | 22 |
| COYOTE RIDGE | 607 | 433 | 71.3 | 174 | 28.7 |
| PINE LODGE CCW | 322 | 258 | 80.1 | 64 | 19.9 |
| AHTANUM VIEW | 120 | 58 | 48.3 | 62 | 51.7 |
| MISSION CREEK-W | 139 | 116 | 83.5 | 23 | 16.5 |
| WORK RELEASE | 613 | 499 | 81.4 | 114 | 18.6 |
| COUNTY FACILITY | 938 | 801 | 85.4 | 137 | 14.6 |

THE DEPARTMENT IS ALSO LEGALLY RESPONSIBLE FOR INMATES
HOUSED OUT OF STATE. THE TOTAL NUMBER OF WASHINGTON STATE INMATES
FOR WHOM THE DEPARTMENT IS RESPONSIBLE IS 18,551

**TABLE 2D
RESIDENT OFFENDERS WITHIN FACILITIES AND WORK RELEASE
LOCATION BY AGE CATEGORY, INCLUDING AVERAGE AGE
AS OF JUNE 30, 2008**

| PRISON | TOTAL | | | | | | | | | | | AVERAGE AGE |
|---------------------------|--------|----------|----------|----------|----------|----------|----------|----------|----------|----------|-------------|-------------|
| | | UNDER 18 | 18 TO 20 | 21 TO 24 | 25 TO 29 | 30 TO 34 | 35 TO 39 | 40 TO 44 | 45 TO 49 | 50 TO 64 | 65 AND OVER | |
| TOTAL | 17,456 | 3 | 659 | 2,048 | 3,205 | 2,478 | 2,557 | 2,393 | 1,850 | 1,998 | 265 | 36.8 |
| WCC | 1,803 | 2 | 123 | 263 | 354 | 240 | 267 | 233 | 179 | 135 | 7 | 34.5 |
| WCC WOMEN | 866 | | 26 | 78 | 154 | 137 | 158 | 143 | 81 | 81 | 8 | 36.7 |
| WASH. PENITENTIARY | 2,037 | | 91 | 301 | 462 | 284 | 269 | 249 | 163 | 194 | 24 | 35.1 |
| MCNEIL ISLAND | 1,288 | | 28 | 102 | 204 | 212 | 213 | 185 | 147 | 182 | 15 | 38.3 |
| MONROE COMPLEX | 2,549 | | 91 | 279 | 415 | 299 | 347 | 322 | 291 | 425 | 80 | 38.9 |
| CLALLAM BAY | 875 | | 61 | 176 | 189 | 123 | 120 | 91 | 52 | 58 | 5 | 32.9 |
| AIRWAY HEIGHTS | 2,162 | 1 | 67 | 214 | 355 | 291 | 304 | 298 | 265 | 323 | 44 | 38.4 |
| STAFFORD CREEK | 1,977 | | 47 | 178 | 330 | 259 | 271 | 279 | 260 | 307 | 46 | 39.1 |
| LARCH | 392 | | 14 | 51 | 79 | 75 | 59 | 70 | 34 | 10 | | 34.3 |
| CEDAR CREEK | 399 | | 11 | 41 | 86 | 67 | 74 | 59 | 38 | 23 | | 35.1 |
| OLYMPIC | 369 | | 16 | 57 | 71 | 61 | 65 | 43 | 36 | 20 | | 34.2 |
| COYOTE RIDGE | 607 | | 19 | 52 | 98 | 122 | 102 | 101 | 66 | 45 | 2 | 36.3 |
| PINE LODGE CCW | 322 | | 14 | 33 | 55 | 47 | 51 | 53 | 37 | 30 | 2 | 36.5 |
| AHTANUM VIEW | 120 | | 1 | 6 | 10 | 8 | 10 | 13 | 13 | 32 | 27 | 50.7 |
| MISSION CREEK-W | 139 | | 1 | 12 | 27 | 29 | 19 | 22 | 19 | 10 | | 36.3 |
| WORK RELEASE | 613 | | 18 | 64 | 103 | 99 | 102 | 95 | 84 | 47 | 1 | 36.6 |
| COUNTY FACILITY | 938 | | 31 | 141 | 213 | 125 | 126 | 137 | 85 | 76 | 4 | 34.9 |

THE DEPARTMENT IS ALSO LEGALLY RESPONSIBLE FOR INMATES
HOUSED OUT OF STATE. THE TOTAL NUMBER OF INMATES
FOR WHOM THE DEPARTMENT IS RESPONSIBLE IS 18,551

TABLE 2E
RESIDENT OFFENDERS WITHIN FACILITIES AND WORK RELEASE
LOCATION BY RACE AND HISPANIC ORIGIN
AS OF JUNE 30, 2008

MALE

| PRISON | TOTAL N | RACE | | | | | | | | | | | | | | | |
|--------------------|------------|--------|------|-------|------|-------------|-----|------------|-----|--------|-----|----------|-----|-------|-----|---------|-----|
| | | WHITE | | BLACK | | N.A. INDIAN | | ASIAN/P.I. | | ESKIMO | | ALEUTIAN | | OTHER | | UNKNOWN | |
| | | N | % | N | % | N | % | N | % | N | % | N | % | N | % | N | % |
| TOTAL | 15,889 | 11,230 | 70.7 | 3,251 | 20.5 | 739 | 4.7 | 537 | 3.4 | 1 | 0 | 2 | 0 | 91 | 0.6 | 38 | 0.2 |
| WCC | 1,803 | 1,295 | 71.8 | 347 | 19.2 | 87 | 4.8 | 62 | 3.4 | . | . | 1 | 0.1 | 11 | 0.6 | . | . |
| WASH. PENITENTIARY | 2,037 | 1,418 | 69.6 | 441 | 21.6 | 100 | 4.9 | 65 | 3.2 | . | . | . | . | 11 | 0.5 | 2 | 0.1 |
| MCNEIL ISLAND | 1,288 | 886 | 68.8 | 285 | 22.1 | 55 | 4.3 | 47 | 3.6 | 1 | 0.1 | . | . | 8 | 0.6 | 6 | 0.5 |
| MONROE COMPLEX | 2,549 | 1,765 | 69.2 | 566 | 22.2 | 106 | 4.2 | 89 | 3.5 | . | . | . | . | 18 | 0.7 | 5 | 0.2 |
| CLALLAM BAY | 875 | 572 | 65.4 | 200 | 22.9 | 46 | 5.3 | 46 | 5.3 | . | . | . | . | 7 | 0.8 | 4 | 0.5 |
| AIRWAY HEIGHTS | 2,162 | 1,615 | 74.7 | 357 | 16.5 | 103 | 4.8 | 62 | 2.9 | . | . | 1 | 0 | 13 | 0.6 | 11 | 0.5 |
| STAFFORD CREEK | 1,977 | 1,398 | 70.7 | 415 | 21 | 78 | 3.9 | 71 | 3.6 | . | . | . | . | 8 | 0.4 | 7 | 0.4 |
| LARCH | 392 | 303 | 77.3 | 64 | 16.3 | 13 | 3.3 | 11 | 2.8 | . | . | . | . | 1 | 0.3 | . | . |
| CEDAR CREEK | 399 | 271 | 67.9 | 85 | 21.3 | 21 | 5.3 | 22 | 5.5 | . | . | . | . | . | . | . | . |
| OLYMPIC | 369 | 268 | 72.6 | 66 | 17.9 | 17 | 4.6 | 17 | 4.6 | . | . | . | . | . | . | 1 | 0.3 |
| COYOTE RIDGE | 607 | 448 | 73.8 | 114 | 18.8 | 26 | 4.3 | 17 | 2.8 | . | . | . | . | 2 | 0.3 | . | . |
| AHTANUM VIEW | 120 | 98 | 81.7 | 15 | 12.5 | 5 | 4.2 | 1 | 0.8 | . | . | . | . | . | . | 1 | 0.8 |
| WORK RELEASE | 509 | 370 | 72.7 | 102 | 20 | 21 | 4.1 | 12 | 2.4 | . | . | . | . | 4 | 0.8 | . | . |
| COUNTY FACILITY | 802 | 523 | 65.2 | 194 | 24.2 | 61 | 7.6 | 15 | 1.9 | . | . | . | . | 8 | 1 | 1 | 0.1 |

MALE

| PRISON | TOTAL N | HISPANIC ORIGIN | | | | | |
|--------------------|------------|-----------------|------|--------------|------|---------|------|
| | | HISPANIC | | NON-HISPANIC | | UNKNOWN | |
| | | N | % | N | % | N | % |
| TOTAL | 15,889 | 1,643 | 10.3 | 13,810 | 86.9 | 436 | 2.7 |
| WCC | 1,803 | 214 | 11.9 | 1,529 | 84.8 | 60 | 3.3 |
| WASH. PENITENTIARY | 2,037 | 283 | 13.9 | 1,720 | 84.4 | 34 | 1.7 |
| MCNEIL ISLAND | 1,288 | 144 | 11.2 | 1,121 | 87 | 23 | 1.8 |
| MONROE COMPLEX | 2,549 | 161 | 6.3 | 2,329 | 91.4 | 59 | 2.3 |
| CLALLAM BAY | 875 | 112 | 12.8 | 746 | 85.3 | 17 | 1.9 |
| AIRWAY HEIGHTS | 2,162 | 293 | 13.6 | 1,805 | 83.5 | 64 | 3 |
| STAFFORD CREEK | 1,977 | 194 | 9.8 | 1,738 | 87.9 | 45 | 2.3 |
| LARCH | 392 | 20 | 5.1 | 365 | 93.1 | 7 | 1.8 |
| CEDAR CREEK | 399 | 16 | 4 | 377 | 94.5 | 6 | 1.5 |
| OLYMPIC | 369 | 21 | 5.7 | 343 | 93 | 5 | 1.4 |
| COYOTE RIDGE | 607 | 81 | 13.3 | 516 | 85 | 10 | 1.6 |
| AHTANUM VIEW | 120 | 8 | 6.7 | 109 | 90.8 | 3 | 2.5 |
| WORK RELEASE | 509 | 21 | 4.1 | 475 | 93.3 | 13 | 2.6 |
| COUNTY FACILITY | 802 | 75 | 9.4 | 637 | 79.4 | 90 | 11.2 |

FEMALE

| PRISON | TOTAL N | RACE | | | | | | | | | | | | | | | |
|-----------------|------------|-------|------|-------|------|-------------|-----|------------|-----|--------|-----|----------|-----|-------|-----|---------|-----|
| | | WHITE | | BLACK | | N.A. INDIAN | | ASIAN/P.I. | | ESKIMO | | ALEUTIAN | | OTHER | | UNKNOWN | |
| | | N | % | N | % | N | % | N | % | N | % | N | % | N | % | N | % |
| TOTAL | 1,567 | 1,136 | 72.5 | 237 | 15.1 | 104 | 6.6 | 37 | 2.4 | 1 | 0.1 | 1 | 0.1 | 50 | 3.2 | 1 | 0.1 |
| WCC WOMEN | 866 | 603 | 69.6 | 151 | 17.4 | 58 | 6.7 | 25 | 2.9 | . | . | . | . | 28 | 3.2 | 1 | 0.1 |
| PINE LODGE CCW | 322 | 262 | 81.4 | 27 | 8.4 | 18 | 5.6 | 4 | 1.2 | 1 | 0.3 | . | . | 10 | 3.1 | . | . |
| MISSION CREEK-W | 139 | 113 | 81.3 | 12 | 8.6 | 9 | 6.5 | 3 | 2.2 | . | . | . | . | 2 | 1.4 | . | . |
| WORK RELEASE | 104 | 74 | 71.2 | 14 | 13.5 | 6 | 5.8 | 4 | 3.8 | . | . | . | . | 6 | 5.8 | . | . |
| COUNTY FACILITY | 136 | 84 | 61.8 | 33 | 24.3 | 13 | 9.6 | 1 | 0.7 | . | . | 1 | 0.7 | 4 | 2.9 | . | . |

FEMALE

| PRISON | TOTAL N | HISPANIC ORIGIN | | | | | |
|-----------------|------------|-----------------|------|--------------|------|---------|------|
| | | HISPANIC | | NON-HISPANIC | | UNKNOWN | |
| | | N | % | N | % | N | % |
| TOTAL | 1,567 | 147 | 9.4 | 1,365 | 87.1 | 55 | 3.5 |
| WCC WOMEN | 866 | 87 | 10 | 763 | 88.1 | 16 | 1.8 |
| PINE LODGE CCW | 322 | 36 | 11.2 | 280 | 87 | 6 | 1.9 |
| MISSION CREEK-W | 139 | 10 | 7.2 | 129 | 92.8 | . | . |
| WORK RELEASE | 104 | 6 | 5.8 | 86 | 82.7 | 12 | 11.5 |
| COUNTY FACILITY | 136 | 8 | 5.9 | 107 | 78.7 | 21 | 15.4 |

**TABLE 2F
RESIDENT OFFENDERS WITHIN FACILITIES AND WORK RELEASE
COUNTY OF CONVICTION
AS OF JUNE 30, 2008**

| COUNTY OF CONVICTION | TOTAL | PRISON | | | | | | | | | | | | | | | | | % OF TOTAL |
|----------------------|--------|--------|-----------|--------------------|---------------|----------------|-------------|-----------------|----------------|-------|-------------|---------|--------------|----------------|--------------|-----------------|--------------|-----------------|------------|
| | | WCC | WCC WOMEN | WASH. PEN ITENTARY | MCNEIL ISLAND | MONROE COMPLEX | CLALLAM BAY | AIRWAYS HEIGHTS | STAFFORD CREEK | LARCH | CEDAR CREEK | OLYMPIC | COYOTE RIDGE | PINE LODGE CCW | AHTANUM VIEW | MISSION CREEK-W | WORK RELEASE | COUNTY FACILITY | |
| TOTAL | 17,456 | 1,803 | 866 | 2,037 | 1,288 | 2,549 | 875 | 2,162 | 1,977 | 392 | 399 | 369 | 607 | 322 | 120 | 139 | 613 | 938 | 100 |
| INTERSTATE | 68 | 2 | 6 | 15 | 2 | 17 | 7 | 13 | 5 | 0 | 0 | 0 | 0 | 0 | 1 | 0 | 0 | 0 | 0.4 |
| ADAMS | 40 | 5 | 3 | 3 | 2 | 3 | 0 | 12 | 4 | 0 | 0 | 0 | 4 | 2 | 1 | 0 | 0 | 1 | 0.2 |
| ASOTIN | 93 | 10 | 8 | 19 | 2 | 6 | 2 | 26 | 3 | 0 | 0 | 0 | 5 | 2 | 2 | 0 | 7 | 1 | 0.5 |
| BENTON | 421 | 36 | 16 | 102 | 8 | 22 | 12 | 98 | 15 | 3 | 4 | 3 | 45 | 17 | 5 | 1 | 19 | 15 | 2.4 |
| CHELAN | 211 | 23 | 15 | 25 | 7 | 21 | 5 | 36 | 14 | 2 | 1 | 3 | 26 | 13 | 2 | 0 | 10 | 8 | 1.2 |
| CLALLAM | 138 | 19 | 11 | 13 | 4 | 19 | 12 | 15 | 18 | 2 | 1 | 9 | 1 | 2 | 1 | 3 | 8 | 0 | 0.8 |
| CLARK | 1,080 | 137 | 52 | 122 | 70 | 123 | 67 | 82 | 167 | 84 | 15 | 16 | 27 | 19 | 9 | 14 | 40 | 36 | 6.2 |
| COLUMBIA | 14 | 2 | 0 | 0 | 0 | 0 | 0 | 3 | 2 | 0 | 0 | 2 | 3 | 0 | 1 | 0 | 1 | 0 | 0.1 |
| COWLITZ | 512 | 55 | 32 | 61 | 35 | 66 | 30 | 48 | 73 | 26 | 13 | 13 | 8 | 7 | 0 | 4 | 23 | 18 | 2.9 |
| DOUGLAS | 74 | 8 | 3 | 15 | 4 | 6 | 3 | 11 | 3 | 2 | 0 | 0 | 4 | 4 | 0 | 1 | 6 | 4 | 0.4 |
| FERRY | 19 | 1 | 0 | 1 | 1 | 1 | 1 | 8 | 2 | 0 | 0 | 0 | 0 | 2 | 0 | 0 | 0 | 2 | 0.1 |
| FRANKLIN | 156 | 12 | 3 | 36 | 7 | 11 | 3 | 45 | 8 | 0 | 2 | 0 | 12 | 3 | 1 | 0 | 3 | 10 | 0.9 |
| GARFIELD | 4 | 0 | 2 | 0 | 0 | 0 | 0 | 0 | 0 | 0 | 0 | 0 | 0 | 1 | 0 | 0 | 0 | 1 | 0 |
| GRANT | 194 | 20 | 5 | 30 | 4 | 23 | 12 | 45 | 11 | 0 | 0 | 0 | 13 | 6 | 3 | 0 | 5 | 17 | 1.1 |
| GRAYS HARBOR | 251 | 15 | 9 | 24 | 29 | 33 | 13 | 23 | 44 | 12 | 12 | 8 | 8 | 5 | 3 | 4 | 7 | 2 | 1.4 |
| ISLAND | 76 | 8 | 7 | 6 | 4 | 12 | 4 | 9 | 13 | 1 | 1 | 3 | 4 | 0 | 1 | 1 | 2 | 0.4 | |
| JEFFERSON | 45 | 7 | 1 | 3 | 2 | 9 | 1 | 4 | 9 | 0 | 2 | 5 | 1 | 1 | 0 | 0 | 0 | 0.3 | |
| KING | 3,899 | 396 | 153 | 429 | 398 | 762 | 211 | 404 | 510 | 65 | 91 | 88 | 107 | 31 | 18 | 22 | 108 | 106 | 22.3 |
| KITSAP | 604 | 63 | 30 | 40 | 59 | 80 | 38 | 66 | 87 | 12 | 15 | 22 | 14 | 7 | 2 | 5 | 47 | 17 | 3.5 |
| KITTITAS | 53 | 2 | 2 | 6 | 3 | 12 | 2 | 8 | 5 | 0 | 0 | 0 | 2 | 2 | 4 | 0 | 2 | 3 | 0.3 |
| KLICKITAT | 38 | 2 | 1 | 7 | 2 | 6 | 2 | 5 | 5 | 0 | 0 | 0 | 0 | 0 | 3 | 0 | 4 | 1 | 0.2 |
| LEWIS | 379 | 34 | 28 | 35 | 28 | 48 | 12 | 36 | 63 | 20 | 16 | 10 | 9 | 9 | 3 | 4 | 15 | 9 | 2.2 |
| LINCOLN | 21 | 2 | 1 | 4 | 0 | 3 | 0 | 7 | 0 | 0 | 0 | 0 | 2 | 2 | 0 | 0 | 0 | 0 | 0.1 |
| MASON | 220 | 24 | 9 | 16 | 14 | 26 | 14 | 21 | 38 | 3 | 6 | 6 | 15 | 7 | 1 | 4 | 10 | 6 | 1.3 |
| OKANOGAN | 84 | 9 | 0 | 14 | 2 | 10 | 4 | 29 | 5 | 0 | 0 | 1 | 6 | 2 | 0 | 2 | 0 | 0.5 | |
| PACIFIC | 74 | 5 | 6 | 7 | 6 | 9 | 4 | 4 | 13 | 2 | 1 | 1 | 2 | 3 | 0 | 4 | 4 | 3 | 0.4 |
| PEND OREILLE | 16 | 0 | 3 | 2 | 0 | 1 | 0 | 5 | 2 | 0 | 0 | 0 | 1 | 0 | 0 | 2 | 0 | 0 | 0.1 |
| PIERCE | 2,883 | 322 | 194 | 322 | 294 | 419 | 158 | 231 | 381 | 70 | 111 | 83 | 86 | 51 | 14 | 36 | 73 | 38 | 16.5 |
| SAN JUAN | 13 | 2 | 0 | 1 | 1 | 4 | 0 | 1 | 1 | 0 | 0 | 1 | 1 | 1 | 0 | 0 | 0 | 0 | 0.1 |
| SKAGIT | 336 | 29 | 16 | 41 | 36 | 61 | 20 | 35 | 38 | 5 | 14 | 7 | 10 | 4 | 1 | 4 | 11 | 4 | 1.9 |
| SKAMANIA | 41 | 3 | 2 | 7 | 2 | 4 | 4 | 5 | 4 | 6 | 1 | 0 | 1 | 0 | 0 | 2 | 0 | 0 | 0.2 |
| SNOHOMISH | 1,275 | 148 | 69 | 118 | 106 | 247 | 64 | 124 | 156 | 29 | 30 | 40 | 36 | 19 | 5 | 11 | 43 | 30 | 7.3 |
| SPOKANE | 1,271 | 111 | 46 | 206 | 31 | 110 | 55 | 423 | 48 | 5 | 2 | 4 | 69 | 37 | 5 | 4 | 62 | 53 | 7.3 |
| STEVENS | 71 | 3 | 2 | 8 | 3 | 10 | 2 | 30 | 4 | 0 | 0 | 0 | 1 | 2 | 4 | 0 | 1 | 1 | 0.4 |
| THURSTON | 754 | 73 | 38 | 71 | 57 | 97 | 57 | 67 | 119 | 19 | 51 | 26 | 20 | 15 | 4 | 11 | 14 | 15 | 4.3 |
| WAHKIAKUM | 19 | 0 | 0 | 2 | 1 | 2 | 0 | 1 | 5 | 3 | 0 | 1 | 1 | 0 | 0 | 1 | 2 | 0 | 0.1 |
| WALLA WALLA | 146 | 15 | 7 | 26 | 7 | 12 | 4 | 26 | 8 | 0 | 2 | 0 | 13 | 7 | 1 | 0 | 11 | 7 | 0.8 |
| WHATCOM | 440 | 56 | 23 | 39 | 35 | 77 | 23 | 32 | 61 | 18 | 7 | 12 | 10 | 8 | 3 | 6 | 13 | 17 | 2.5 |
| WHITMAN | 29 | 5 | 0 | 4 | 0 | 4 | 0 | 7 | 4 | 0 | 0 | 1 | 0 | 0 | 0 | 4 | 0 | 0 | 0.2 |
| YAKIMA | 609 | 68 | 27 | 145 | 22 | 44 | 27 | 109 | 28 | 3 | 1 | 4 | 40 | 19 | 23 | 0 | 24 | 25 | 3.5 |
| JUVENILE | 8 | 1 | 0 | 1 | 0 | 3 | 1 | 1 | 1 | 0 | 0 | 0 | 0 | 0 | 0 | 0 | 0 | 0 | 0 |
| BOARDER,FED | 3 | 0 | 0 | 1 | 0 | 2 | 0 | 0 | 0 | 0 | 0 | 0 | 0 | 0 | 0 | 0 | 0 | 0 | 0 |
| UNKNOWN | 774 | 70 | 36 | 10 | 0 | 124 | 1 | 7 | 0 | 0 | 0 | 0 | 0 | 12 | 0 | 0 | 30 | 484 | 4.4 |

TABLE 2G
RESIDENT OFFENDERS WITHIN FACILITIES AND WORK RELEASE
OFFENSE BY RACE AND HISPANIC ORIGIN
AS OF JUNE 30, 2008

| OFFENSE | TOTAL | RACE | | | | | | | | | | | | | | | | |
|---------------------|--------|--------|------|-------|------|-------------|------|------------|-----|--------|-----|----------|---|-------|-----|---------|-----|-----|
| | | WHITE | | BLACK | | N.A. INDIAN | | ASIAN/P.I. | | ESKIMO | | ALEUTIAN | | OTHER | | UNKNOWN | | |
| | | N | % | N | % | N | % | N | % | N | % | N | % | N | % | N | % | |
| TOTAL | 17,456 | 12,366 | 70.8 | 3,488 | 20 | 843 | 4.8 | 574 | 3.3 | 2 | 0 | 3 | 0 | 141 | 0.8 | 39 | 0.2 | |
| MURDER 1 | 1,184 | 803 | 67.8 | 255 | 21.5 | 59 | 5 | 61 | 5.2 | . | . | . | . | 6 | 0.5 | . | . | |
| MURDER 2 | 578 | 363 | 62.8 | 138 | 23.9 | 28 | 4.8 | 43 | 7.4 | . | . | . | . | 6 | 1 | . | . | |
| MANSLAUGHTER 1 | 145 | 89 | 61.4 | 36 | 24.8 | 10 | 6.9 | 10 | 6.9 | . | . | . | . | . | . | . | . | |
| MANSLAUGHTER 2 | 42 | 33 | 78.6 | 7 | 16.7 | 1 | 2.4 | 1 | 2.4 | . | . | . | . | . | . | . | . | |
| VEH HOMICIDE | 151 | 113 | 74.8 | 14 | 9.3 | 14 | 9.3 | 6 | 4 | . | . | . | . | 3 | 2 | 1 | 0.7 | |
| RAPE OF CHILD 1 | 785 | 687 | 87.5 | 47 | 6 | 28 | 3.6 | 20 | 2.5 | . | . | . | . | 1 | 0.1 | 2 | 0.3 | |
| RAPE 1 | 307 | 187 | 60.9 | 104 | 33.9 | 6 | 2 | 7 | 2.3 | . | . | . | . | 3 | 1 | . | . | |
| RAPE 2 | 185 | 125 | 67.6 | 47 | 25.4 | 5 | 2.7 | 6 | 3.2 | . | . | . | . | 1 | 0.5 | 1 | 0.5 | |
| RAPE OTHER | 55 | 41 | 74.5 | 10 | 18.2 | 3 | 5.5 | . | . | . | . | . | . | 1 | 1.8 | . | . | |
| RAPE OF CHILD 2 | 321 | 272 | 84.7 | 28 | 8.7 | 10 | 3.1 | 5 | 1.6 | . | . | . | . | 3 | 0.9 | 3 | 0.9 | |
| VIO SEX, CHILD | 606 | 537 | 88.6 | 28 | 4.6 | 16 | 2.6 | 19 | 3.1 | . | . | . | . | 3 | 0.5 | 3 | 0.5 | |
| IND LIBERTIES | 124 | 97 | 78.2 | 18 | 14.5 | 4 | 3.2 | 5 | 4 | . | . | . | . | . | . | . | . | |
| NV SEX, CHILD | 423 | 368 | 87 | 32 | 7.6 | 12 | 2.8 | 6 | 1.4 | . | . | . | . | 2 | 0.5 | 3 | 0.7 | |
| OTHER SEX CRIME | 487 | 363 | 74.5 | 72 | 14.8 | 37 | 7.6 | 10 | 2.1 | . | . | . | . | 3 | 0.6 | 2 | 0.4 | |
| PUBLIC NUISANCE SEX | 35 | 19 | 54.3 | 13 | 37.1 | 1 | 2.9 | 2 | 5.7 | . | . | . | . | . | . | . | . | |
| ROBBERY 1 | 1,279 | 785 | 61.4 | 373 | 29.2 | 50 | 3.9 | 54 | 4.2 | . | . | . | . | 12 | 0.9 | 5 | 0.4 | |
| ROBBERY 2 | 389 | 235 | 60.4 | 111 | 28.5 | 29 | 7.5 | 9 | 2.3 | . | . | . | . | 5 | 1.3 | . | . | |
| EXTORTION 1 | 9 | 6 | 66.7 | 2 | 22.2 | 1 | 11.1 | . | . | . | . | . | . | . | . | . | . | |
| EXTORTION 2 | 5 | 4 | 80 | . | . | . | . | . | . | . | . | . | . | 1 | 20 | . | . | |
| ASSAULT 1 | 543 | 333 | 61.3 | 141 | 26 | 29 | 5.3 | 31 | 5.7 | . | . | . | . | 6 | 1.1 | 3 | 0.6 | |
| ASSAULT 2 | 1,009 | 632 | 62.6 | 248 | 24.6 | 67 | 6.6 | 49 | 4.9 | . | . | . | . | 11 | 1.1 | 2 | 0.2 | |
| VEHICULR ASSAULT | 101 | 82 | 81.2 | 12 | 11.9 | 4 | 4 | 2 | 2 | . | . | . | . | 1 | 1 | . | . | |
| ASSAULT OTHER | 1,649 | 1,113 | 67.5 | 363 | 22 | 107 | 6.5 | 49 | 3 | 1 | 0.1 | . | . | 12 | 0.7 | 4 | 0.2 | |
| KIDNAP 1 | 33 | 27 | 81.8 | 3 | 9.1 | 1 | 3 | 1 | 3 | . | . | . | . | 1 | 3 | . | . | |
| KIDNAP 2 | 29 | 23 | 79.3 | 3 | 10.3 | 2 | 6.9 | . | . | . | . | . | . | 1 | 3.4 | . | . | |
| ARSON 1 | 35 | 28 | 80 | 5 | 14.3 | . | . | 1 | 2.9 | . | . | . | . | 1 | 2.9 | . | . | |
| ARSON 2 | 18 | 16 | 88.9 | . | . | 2 | 11.1 | . | . | . | . | . | . | . | . | . | . | |
| BURGLARY 1 | 180 | 137 | 76.1 | 31 | 17.2 | 6 | 3.3 | 5 | 2.8 | . | . | . | . | 1 | 0.6 | . | . | |
| BURGLARY 2 | 1,002 | 814 | 81.2 | 120 | 12 | 45 | 4.5 | 18 | 1.8 | . | . | . | 1 | 0.1 | 4 | 0.4 | . | |
| THEFT 1 | 372 | 277 | 74.5 | 66 | 17.7 | 11 | 3 | 13 | 3.5 | . | . | . | 1 | 0.3 | 3 | 0.8 | 1 | 0.3 |
| AUTO THEFT | 135 | 103 | 76.3 | 15 | 11.1 | 6 | 4.4 | 10 | 7.4 | . | . | . | . | 1 | 0.7 | . | . | |
| FORGERY | 236 | 188 | 79.7 | 31 | 13.1 | 5 | 2.1 | 5 | 2.1 | . | . | . | . | 6 | 2.5 | 1 | 0.4 | |
| OTHER PROPERTY | 703 | 567 | 80.7 | 67 | 9.5 | 37 | 5.3 | 23 | 3.3 | 1 | 0.1 | . | . | 7 | 1 | 1 | 0.1 | |
| THEFT 2 | 203 | 153 | 75.4 | 36 | 17.7 | 10 | 4.9 | 4 | 2 | . | . | . | . | . | . | . | . | |
| DRUG CRIME | 2,372 | 1,559 | 65.7 | 636 | 26.8 | 93 | 3.9 | 57 | 2.4 | . | . | . | . | 23 | 1 | 4 | 0.2 | |
| OTHER FELONY | 190 | 128 | 67.4 | 45 | 23.7 | 13 | 6.8 | 4 | 2.1 | . | . | . | . | . | . | . | . | |
| MISDEMEANANT | 5 | 4 | 80 | 1 | 20 | . | . | . | . | . | . | . | . | . | . | . | . | |
| UNKNOWN | 1,531 | 1,055 | 68.9 | 330 | 21.6 | 91 | 5.9 | 38 | 2.5 | . | . | . | 1 | 0.1 | 13 | 0.8 | 3 | 0.2 |

| OFFENSE | TOTAL | HISPANIC ORIGIN | | | |
|---------------------|--------|-----------------|------|--------------|------|
| | | HISPANIC | | NON-HISPANIC | |
| | | N | % | N | % |
| TOTAL | 17,456 | 1,790 | 10.3 | 15,175 | 86.9 |
| MURDER 1 | 1,184 | 106 | 9 | 1,067 | 90.1 |
| MURDER 2 | 578 | 86 | 14.9 | 486 | 84.1 |
| MANSLAUGHTER 1 | 145 | 21 | 14.5 | 118 | 81.4 |
| MANSLAUGHTER 2 | 42 | 3 | 7.1 | 35 | 83.3 |
| VEH HOMICIDE | 151 | 16 | 10.6 | 134 | 88.7 |
| RAPE OF CHILD 1 | 785 | 69 | 8.8 | 686 | 87.4 |
| RAPE 1 | 307 | 29 | 9.4 | 275 | 89.6 |
| RAPE 2 | 185 | 24 | 13 | 157 | 84.9 |
| RAPE OTHER | 55 | 7 | 12.7 | 47 | 85.5 |
| RAPE OF CHILD 2 | 321 | 46 | 14.3 | 259 | 80.7 |
| VIO SEX, CHILD | 606 | 74 | 12.2 | 504 | 83.2 |
| IND LIBERTIES | 124 | 16 | 12.9 | 102 | 82.3 |
| NV SEX, CHILD | 423 | 49 | 11.6 | 361 | 85.3 |
| OTHER SEX CRIME | 487 | 35 | 7.2 | 442 | 90.8 |
| PUBLIC NUISANCE SEX | 35 | 2 | 5.7 | 33 | 94.3 |
| ROBBERY 1 | 1,279 | 135 | 10.6 | 1,117 | 87.3 |
| ROBBERY 2 | 389 | 28 | 7.2 | 354 | 91 |
| EXTORTION 1 | 9 | . | . | 9 | 100 |
| EXTORTION 2 | 5 | 2 | 40 | 3 | 60 |
| ASSAULT 1 | 543 | 90 | 16.6 | 438 | 80.7 |
| ASSAULT 2 | 1,009 | 119 | 11.8 | 866 | 85.8 |
| VEHICULR ASSAULT | 101 | 10 | 9.9 | 89 | 88.1 |
| ASSAULT OTHER | 1,649 | 160 | 9.7 | 1,454 | 88.2 |
| KIDNAP 1 | 33 | 10 | 30.3 | 22 | 66.7 |
| KIDNAP 2 | 29 | 4 | 13.8 | 25 | 86.2 |
| ARSON 1 | 35 | 3 | 8.6 | 32 | 91.4 |
| ARSON 2 | 18 | . | . | 18 | 100 |
| BURGLARY 1 | 180 | 18 | 10 | 159 | 88.3 |
| BURGLARY 2 | 1,002 | 61 | 6.1 | 928 | 92.6 |
| THEFT 1 | 372 | 17 | 4.6 | 350 | 94.1 |
| AUTO THEFT | 135 | 14 | 10.4 | 121 | 89.6 |
| FORGERY | 236 | 26 | 11 | 206 | 87.3 |
| OTHER PROPERTY | 703 | 39 | 5.5 | 655 | 93.2 |
| THEFT 2 | 203 | 13 | 6.4 | 188 | 92.6 |
| DRUG CRIME | 2,372 | 315 | 13.3 | 2,017 | 85 |
| OTHER FELONY | 190 | 13 | 6.8 | 173 | 91.1 |
| MISDEMEANANT | 5 | . | . | 5 | 100 |
| UNKNOWN | 1,531 | 130 | 8.5 | 1,240 | 81 |

THE DEPARTMENT IS ALSO LEGALLY RESPONSIBLE FOR INMATES
HOUSED OUT OF STATE. THE TOTAL NUMBER OF INMATES
FOR WHOM THE DEPARTMENT IS RESPONSIBLE IS 18,551

**TABLE 2H
RESIDENT OFFENDERS CURRENTLY BEING HELD IN OUT OF STATE RENTED BEDS
OFFENSE BY RACE AND HISPANIC ORIGIN
AS OF JUNE 30, 2008**

| OFFENSE | TOTAL | RACE | | | | | | | | | | | |
|-----------------|-------|-------|------|-------|------|-------------|------|------------|------|-------|-----|---------|-----|
| | | WHITE | | BLACK | | N.A. INDIAN | | ASIAN/P.I. | | OTHER | | UNKNOWN | |
| | | N | % | N | % | N | % | N | % | N | % | N | % |
| TOTAL | 1,095 | 718 | 65.6 | 239 | 21.8 | 49 | 4.5 | 70 | 6.4 | 16 | 1.5 | 3 | 0.3 |
| MURDER 1 | 227 | 118 | 52 | 63 | 27.8 | 15 | 6.6 | 27 | 11.9 | 4 | 1.8 | . | . |
| MURDER 2 | 102 | 71 | 69.6 | 19 | 18.6 | 2 | 2 | 7 | 6.9 | 2 | 2 | 1 | 1 |
| MANSLAUGHTER 1 | 29 | 15 | 51.7 | 8 | 27.6 | 3 | 10.3 | 2 | 6.9 | 1 | 3.4 | . | . |
| VEH HOMICIDE | 1 | 1 | 100 | . | . | . | . | . | . | . | . | . | . |
| RAPE OF CHILD 1 | 186 | 154 | 82.8 | 15 | 8.1 | 7 | 3.8 | 5 | 2.7 | 3 | 1.6 | 2 | 1.1 |
| RAPE 1 | 65 | 38 | 58.5 | 20 | 30.8 | 5 | 7.7 | 1 | 1.5 | 1 | 1.5 | . | . |
| RAPE 2 | 33 | 24 | 72.7 | 6 | 18.2 | 3 | 9.1 | . | . | . | . | . | . |
| RAPE OTHER | 2 | 2 | 100 | . | . | . | . | . | . | . | . | . | . |
| RAPE OF CHILD 2 | 57 | 47 | 82.5 | 4 | 7 | 1 | 1.8 | 4 | 7 | 1 | 1.8 | . | . |
| VIO SEX, CHILD | 57 | 49 | 86 | 4 | 7 | 2 | 3.5 | 1 | 1.8 | 1 | 1.8 | . | . |
| IND LIBERTIES | 2 | 2 | 100 | . | . | . | . | . | . | . | . | . | . |
| NV SEX, CHILD | 2 | 2 | 100 | . | . | . | . | . | . | . | . | . | . |
| OTHER SEX CRIME | 4 | 3 | 75 | 1 | 25 | . | . | . | . | . | . | . | . |
| ROBBERY 1 | 110 | 55 | 50 | 40 | 36.4 | 9 | 8.2 | 6 | 5.5 | . | . | . | . |
| ROBBERY 2 | 9 | 4 | 44.4 | 5 | 55.6 | . | . | . | . | . | . | . | . |
| EXTORTION 1 | 1 | . | . | . | . | . | . | 1 | 100 | . | . | . | . |
| ASSAULT 1 | 103 | 61 | 59.2 | 27 | 26.2 | . | . | 12 | 11.7 | 3 | 2.9 | . | . |
| ASSAULT 2 | 26 | 17 | 65.4 | 5 | 19.2 | 1 | 3.8 | 3 | 11.5 | . | . | . | . |
| ASSAULT OTHER | 39 | 28 | 71.8 | 10 | 25.6 | . | . | 1 | 2.6 | . | . | . | . |
| KIDNAP 1 | 3 | 1 | 33.3 | 1 | 33.3 | 1 | 33.3 | . | . | . | . | . | . |
| BURGLARY 1 | 6 | 5 | 83.3 | 1 | 16.7 | . | . | . | . | . | . | . | . |
| BURGLARY 2 | 9 | 7 | 77.8 | 2 | 22.2 | . | . | . | . | . | . | . | . |
| THEFT 1 | 7 | 4 | 57.1 | 3 | 42.9 | . | . | . | . | . | . | . | . |
| AUTO THEFT | 1 | 1 | 100 | . | . | . | . | . | . | . | . | . | . |
| OTHER PROPERTY | 1 | . | . | 1 | 100 | . | . | . | . | . | . | . | . |
| DRUG CRIME | 13 | 9 | 69.2 | 4 | 30.8 | . | . | . | . | . | . | . | . |

| OFFENSE | HISPANIC ORIGIN | | | | | |
|-----------------|-----------------|------|--------------|------|---------|------|
| | HISPANIC | | NON-HISPANIC | | UNKNOWN | |
| | N | % | N | % | N | % |
| TOTAL | 132 | 12.1 | 937 | 85.6 | 26 | 2.4 |
| MURDER 1 | 24 | 10.6 | 202 | 89 | 1 | 0.4 |
| MURDER 2 | 14 | 13.7 | 87 | 85.3 | 1 | 1 |
| MANSLAUGHTER 1 | 3 | 10.3 | 26 | 89.7 | . | . |
| VEH HOMICIDE | 1 | 100 | . | . | . | . |
| RAPE OF CHILD 1 | 21 | 11.3 | 153 | 82.3 | 12 | 6.5 |
| RAPE 1 | 7 | 10.8 | 58 | 89.2 | . | . |
| RAPE 2 | 5 | 15.2 | 28 | 84.8 | . | . |
| RAPE OTHER | . | . | 1 | 50 | 1 | 50 |
| RAPE OF CHILD 2 | 7 | 12.3 | 50 | 87.7 | . | . |
| VIO SEX, CHILD | 4 | 7 | 51 | 89.5 | 2 | 3.5 |
| IND LIBERTIES | . | . | 2 | 100 | . | . |
| NV SEX, CHILD | . | . | 2 | 100 | . | . |
| OTHER SEX CRIME | . | . | 3 | 75 | 1 | 25 |
| ROBBERY 1 | 17 | 15.5 | 91 | 82.7 | 2 | 1.8 |
| ROBBERY 2 | . | . | 9 | 100 | . | . |
| EXTORTION 1 | . | . | 1 | 100 | . | . |
| ASSAULT 1 | 18 | 17.5 | 83 | 80.6 | 2 | 1.9 |
| ASSAULT 2 | 4 | 15.4 | 21 | 80.8 | 1 | 3.8 |
| ASSAULT OTHER | 4 | 10.3 | 33 | 84.6 | 2 | 5.1 |
| KIDNAP 1 | . | . | 3 | 100 | . | . |
| BURGLARY 1 | . | . | 5 | 83.3 | 1 | 16.7 |
| BURGLARY 2 | . | . | 9 | 100 | . | . |
| THEFT 1 | . | . | 7 | 100 | . | . |
| AUTO THEFT | . | . | 1 | 100 | . | . |
| OTHER PROPERTY | . | . | 1 | 100 | . | . |
| DRUG CRIME | 3 | 23.1 | 10 | 76.9 | . | . |

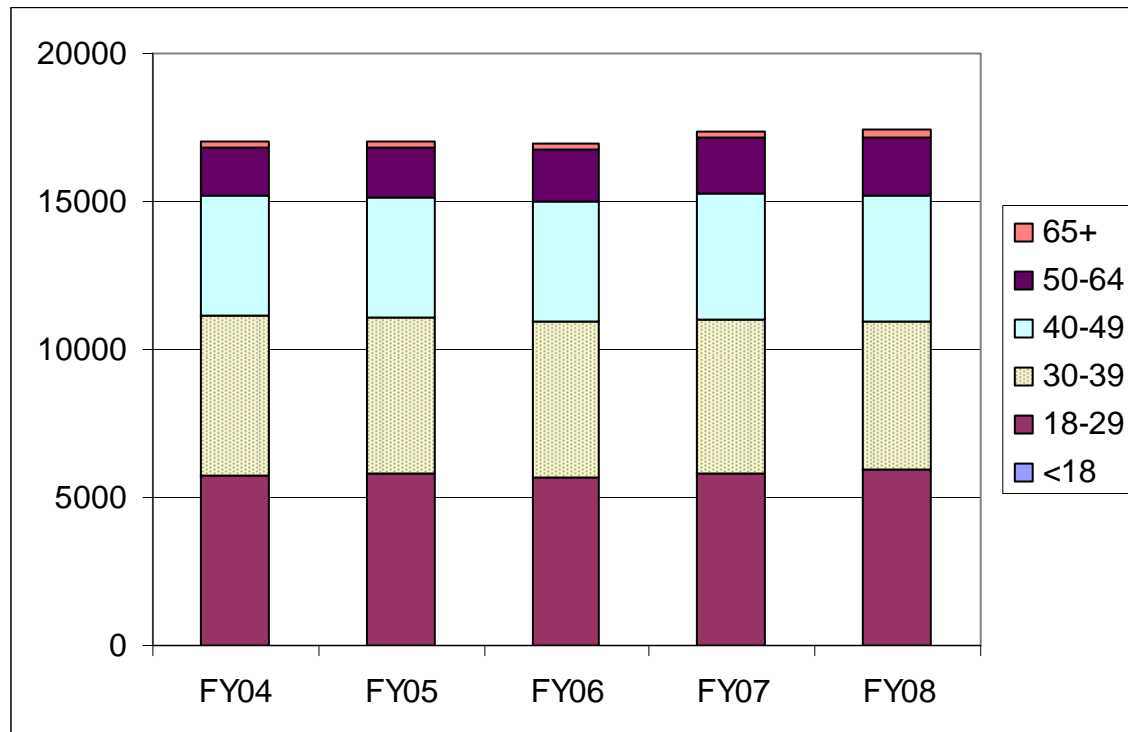
**TABLE 2J
RESIDENT OFFENDERS WITHIN FACILITIES AND WORK RELEASE
DISTRIBUTION OF LOCATION BY RISK MANAGEMENT TYPE
AS OF JUNE 30, 2008**

| PRISON | TOTAL | RMI | | | | | | | | | |
|---------------------------|--------|-------|------|-------|------|-------|------|-----|------|-----|-----|
| | | RMA | | RMB | | RMC | | RMD | | UNC | |
| | | N | % | N | % | N | % | N | % | N | % |
| TOTAL | 17,456 | 8,931 | 51.2 | 4,667 | 26.7 | 2,635 | 15.1 | 776 | 4.4 | 447 | 2.6 |
| WCC | 1,803 | 677 | 37.5 | 444 | 24.6 | 296 | 16.4 | 152 | 8.4 | 234 | 13 |
| WCC WOMEN | 866 | 212 | 24.5 | 258 | 29.8 | 275 | 31.8 | 98 | 11.3 | 23 | 2.7 |
| WASH. PENITENTIARY | 2,037 | 1,281 | 62.9 | 462 | 22.7 | 175 | 8.6 | 59 | 2.9 | 60 | 2.9 |
| MCNEIL ISLAND | 1,288 | 748 | 58.1 | 313 | 24.3 | 155 | 12 | 61 | 4.7 | 11 | 0.9 |
| MONROE COMPLEX | 2,549 | 1,663 | 65.2 | 641 | 25.1 | 167 | 6.6 | 49 | 1.9 | 29 | 1.1 |
| CLALLAM BAY | 875 | 567 | 64.8 | 188 | 21.5 | 98 | 11.2 | 16 | 1.8 | 6 | 0.7 |
| AIRWAY HEIGHTS | 2,162 | 1,104 | 51.1 | 625 | 28.9 | 324 | 15 | 77 | 3.6 | 32 | 1.5 |
| STAFFORD CREEK | 1,977 | 1,126 | 57 | 542 | 27.4 | 212 | 10.7 | 72 | 3.6 | 25 | 1.3 |
| LARCH | 392 | 161 | 41.1 | 105 | 26.8 | 105 | 26.8 | 19 | 4.8 | 2 | 0.5 |
| CEDAR CREEK | 399 | 176 | 44.1 | 82 | 20.6 | 112 | 28.1 | 28 | 7 | 1 | 0.3 |
| OLYMPIC | 369 | 134 | 36.3 | 99 | 26.8 | 112 | 30.4 | 23 | 6.2 | 1 | 0.3 |
| COYOTE RIDGE | 607 | 248 | 40.9 | 178 | 29.3 | 156 | 25.7 | 24 | 4 | 1 | 0.2 |
| PINE LODGE CCW | 322 | 49 | 15.2 | 115 | 35.7 | 133 | 41.3 | 25 | 7.8 | . | . |
| AHTANUM VIEW | 120 | 47 | 39.2 | 44 | 36.7 | 21 | 17.5 | 7 | 5.8 | 1 | 0.8 |
| MISSION CREEK-W | 139 | 26 | 18.7 | 34 | 24.5 | 70 | 50.4 | 9 | 6.5 | . | . |
| WORK RELEASE | 613 | 179 | 29.2 | 194 | 31.6 | 203 | 33.1 | 25 | 4.1 | 12 | 2 |
| COUNTY FACILITY | 938 | 533 | 56.8 | 343 | 36.6 | 21 | 2.2 | 32 | 3.4 | 9 | 1 |

THE DEPARTMENT IS ALSO LEGALLY RESPONSIBLE FOR INMATES
HOUSED OUT OF STATE. THE TOTAL NUMBER OF INMATES
FOR WHOM THE DEPARTMENT IS RESPONSIBLE IS 18,551

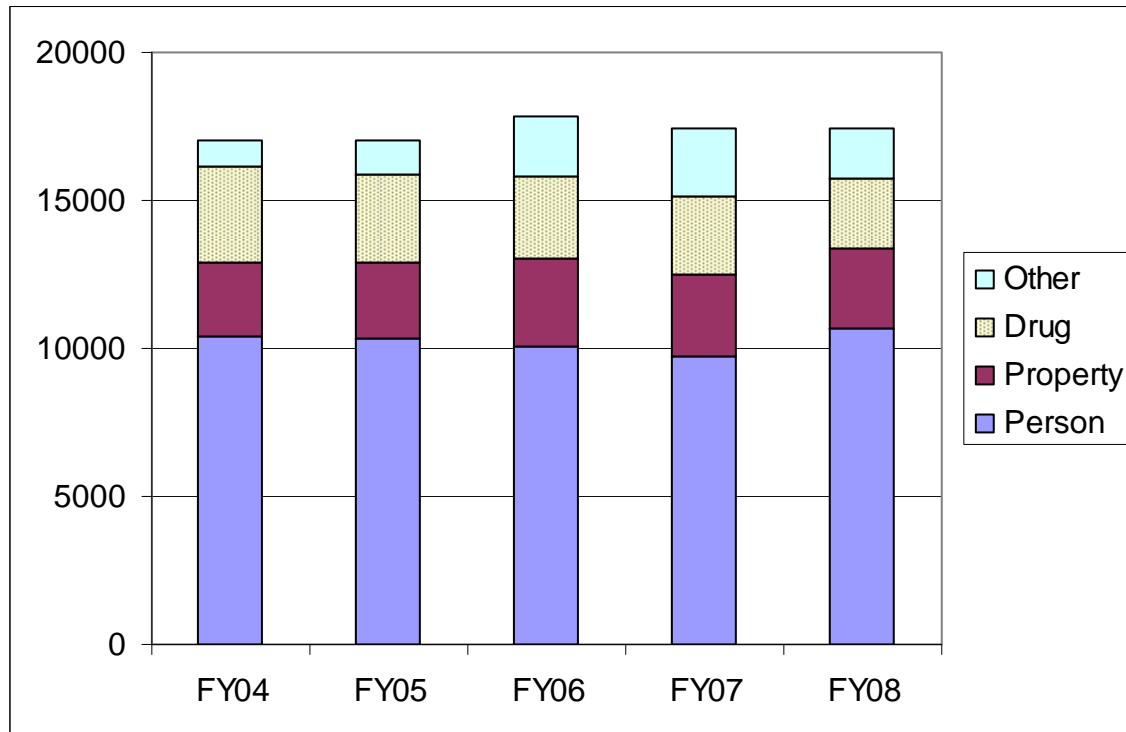
**CHART 2-1:
AGE DISTRIBUTION OF RESIDENT OFFENDERS WITHIN FACILITIES AND WORK RELEASE
OVER LAST FIVE FISCAL YEARS**

▽ The inmate population continues its gradual aging. The average inmate is now 36.8 years old.



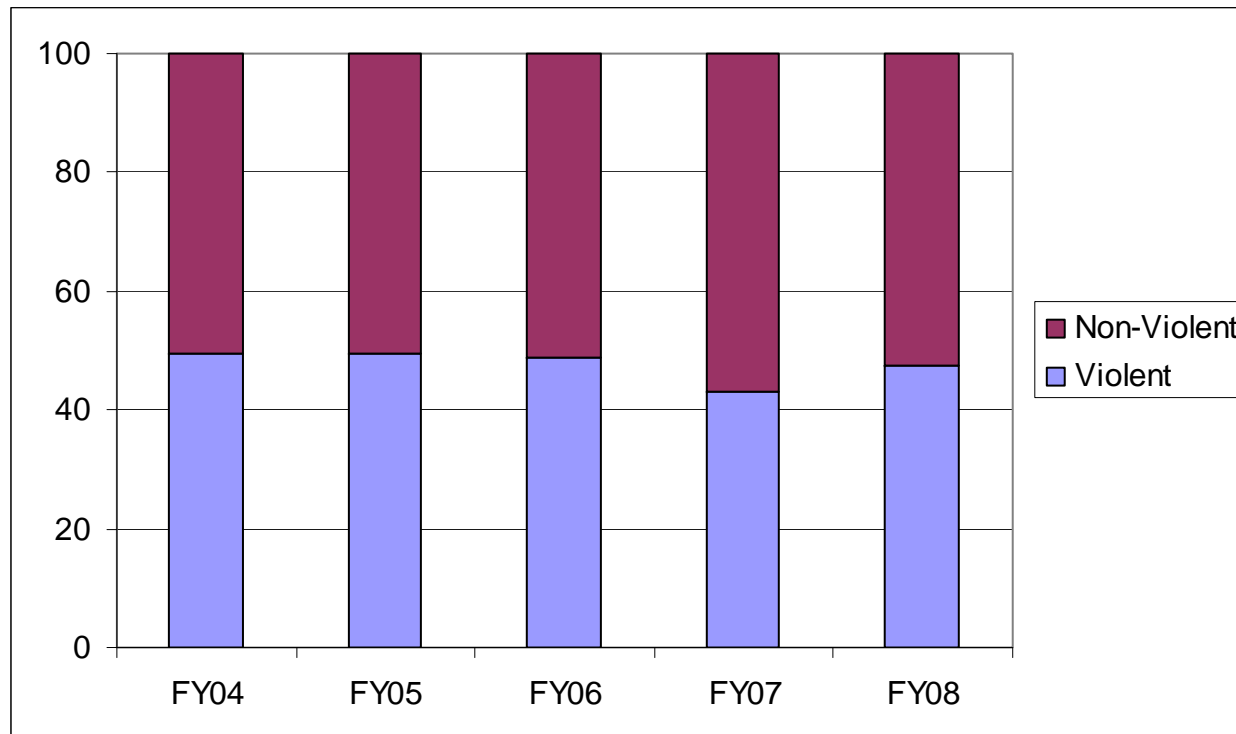
**CHART 2-3:
DISTRIBUTION OF OFFENSE CATEGORY OF RESIDENT OFFENDERS WITHIN FACILITIES
AND WORK RELEASE OVER LAST FIVE FISCAL YEARS**

▽ Offenders convicted of crimes against persons continue to make up the majority of the inmate population.



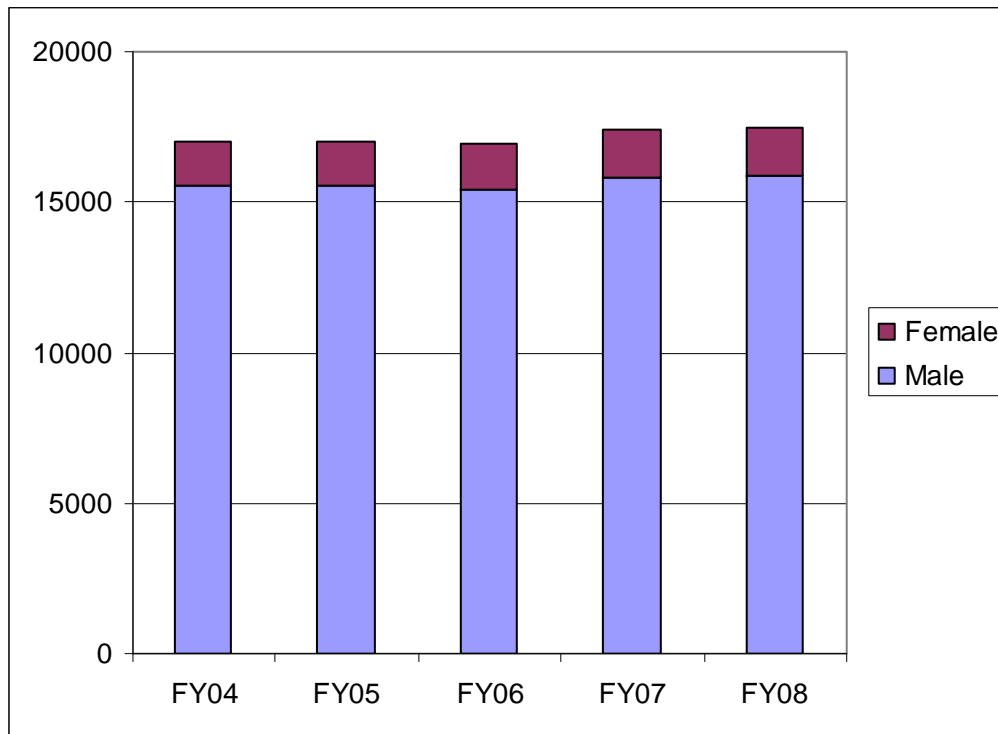
**CHART 2-4:
PERCENTAGE OF VIOLENT VS. NON-VIOLENT CRIME CONVICTIONS AMONG WA STATE
OFFENDERS WITHIN FACILITIES AND WORK RELEASE OVER LAST FIVE FISCAL YEARS**

▽ There are currently more non-violent offenders within the inmate population than there are violent offenders.



**CHART 2-5:
SEX DISTRIBUTION OF RESIDENT OFFENDERS WITHIN FACILITIES AND WORK RELEASE OVER
LAST FIVE FISCAL YEARS**

▽ Females now represent 9.3% of the offender population.





**STATE OF WASHINGTON
DEPARTMENT OF CORRECTIONS
ADULT CORRECTIONS FACILITIES**

ADMISSIONS TO FACILITIES

TABLE 3A
ADMISSIONS BY MONTH, TYPE OF ADMISSION, AND SEX
AS OF JUNE 30, 2008

| MONTH | SEX | SEX TOTAL | TYPE OF ADMISSION | | |
|-----------|--------|-----------|-------------------|-------------|-------|
| | | | NEW ADMISSION | READMISSION | OTHER |
| JULY | MALE | 1,964 | 303 | 281 | 1,380 |
| | FEMALE | 345 | 54 | 23 | 268 |
| AUGUST | MALE | 2,086 | 287 | 290 | 1,509 |
| | FEMALE | 407 | 69 | 24 | 314 |
| SEPTEMBER | MALE | 1,783 | 255 | 209 | 1,319 |
| | FEMALE | 309 | 51 | 26 | 232 |
| OCTOBER | MALE | 2,127 | 367 | 281 | 1,479 |
| | FEMALE | 416 | 69 | 35 | 312 |
| NOVEMBER | MALE | 1,780 | 289 | 276 | 1,215 |
| | FEMALE | 323 | 48 | 27 | 248 |
| DECEMBER | MALE | 1,733 | 289 | 243 | 1,201 |
| | FEMALE | 333 | 51 | 26 | 256 |
| JANUARY | MALE | 2,022 | 300 | 276 | 1,446 |
| | FEMALE | 397 | 50 | 22 | 325 |
| FEBRUARY | MALE | 2,014 | 324 | 305 | 1,385 |
| | FEMALE | 351 | 51 | 27 | 273 |
| MARCH | MALE | 1,846 | 301 | 274 | 1,271 |
| | FEMALE | 341 | 42 | 36 | 263 |
| APRIL | MALE | 1,953 | 354 | 280 | 1,319 |
| | FEMALE | 368 | 51 | 38 | 279 |
| MAY | MALE | 1,932 | 308 | 260 | 1,364 |
| | FEMALE | 355 | 59 | 24 | 272 |
| JUNE | MALE | 1,979 | 286 | 262 | 1,431 |
| | FEMALE | 383 | 64 | 30 | 289 |

TABLE 3B
ADMISSIONS BY TYPE OF ADMISSION AND COUNTY OF CONVICTION
AS OF JUNE 30, 2008

| COUNTY OF CONVICTION | TOTAL | TYPE OF ADMISSION | | |
|----------------------|-------|-------------------|-------------|-------|
| | | NEW ADMISSION | READMISSION | OTHER |
| TOTAL | 27547 | 4322 | 3575 | 19650 |
| INTERSTATE | 8 | | | 8 |
| ADAMS | 37 | 10 | 8 | 19 |
| ASOTIN | 95 | 36 | 19 | 40 |
| BENTON | 506 | 133 | 93 | 280 |
| CHELAN | 250 | 52 | 45 | 153 |
| CLALLAM | 135 | 46 | 32 | 57 |
| CLARK | 1191 | 287 | 231 | 673 |
| COLUMBIA | 17 | 4 | 5 | 8 |
| COWLITZ | 649 | 86 | 114 | 449 |
| DOUGLAS | 92 | 24 | 12 | 56 |
| FERRY | 9 | 1 | 2 | 6 |
| FRANKLIN | 188 | 34 | 34 | 120 |
| GARFIELD | 6 | 3 | | 3 |
| GRANT | 250 | 57 | 30 | 163 |
| GRAYS HARBOR | 271 | 55 | 73 | 143 |
| ISLAND | 74 | 21 | 17 | 36 |
| JEFFERSON | 39 | 16 | 9 | 14 |
| KING | 5441 | 721 | 820 | 3900 |
| KITSAP | 610 | 139 | 135 | 336 |
| KITTITAS | 39 | 11 | 9 | 19 |
| KLICKITAT | 27 | 6 | 6 | 15 |
| LEWIS | 379 | 72 | 72 | 235 |
| LINCOLN | 16 | 3 | 2 | 11 |
| MASON | 208 | 49 | 37 | 122 |
| OKANOGAN | 80 | 27 | 16 | 37 |
| PACIFIC | 86 | 27 | 8 | 51 |
| PEND OREILLE | 7 | 4 | | 3 |
| PIERCE | 3039 | 697 | 639 | 1703 |
| SAN JUAN | 15 | 6 | 1 | 8 |
| SKAGIT | 237 | 113 | 53 | 71 |
| SKAMANIA | 32 | 13 | 4 | 15 |
| SNOHOMISH | 1226 | 289 | 271 | 666 |
| SPOKANE | 1603 | 269 | 314 | 1020 |
| STEVENS | 57 | 12 | 9 | 36 |
| THURSTON | 722 | 153 | 147 | 422 |
| WAHKIAKUM | 14 | 4 | 4 | 6 |
| WALLA WALLA | 202 | 45 | 20 | 137 |
| WHATCOM | 499 | 133 | 119 | 247 |
| WHITMAN | 24 | 8 | 2 | 14 |
| YAKIMA | 822 | 173 | 153 | 496 |
| JUVENILE | 13 | | 1 | 12 |
| UNKNOWN | 8332 | 483 | 9 | 7840 |

**TABLE 3C
ADMISSIONS BY AGE AT ADMISSION, RACE, HISPANIC ORIGIN AND SEX
AS OF JUNE 30, 2008**

MALE

| RACE | TOTAL | AGE AT ADMISSION | | | | | | | | | | AVERAGE AGE |
|--------------------|-------|------------------|----------|----------|----------|----------|----------|----------|----------|----------|-------------|-------------|
| | | UNDER 18 | 18 TO 20 | 21 TO 24 | 25 TO 29 | 30 TO 34 | 35 TO 39 | 40 TO 44 | 45 TO 49 | 50 TO 64 | 65 AND OVER | |
| TOTAL | 23219 | 68 | 1373 | 3555 | 4477 | 3268 | 3456 | 3095 | 2206 | 1648 | 73 | 34.4 |
| WHITE | 15281 | 44 | 888 | 2460 | 3086 | 2139 | 2253 | 1958 | 1427 | 981 | 45 | 34 |
| BLACK | 5823 | 15 | 344 | 750 | 926 | 781 | 871 | 877 | 655 | 583 | 21 | 35.9 |
| N.A. INDIAN | 1245 | 4 | 61 | 179 | 270 | 202 | 209 | 181 | 79 | 53 | 7 | 33.7 |
| ASIAN/P.I. | 645 | 4 | 57 | 118 | 142 | 110 | 100 | 60 | 38 | 16 | | 31.6 |
| ESKIMO | 3 | | | | | 3 | | | | | | 34.1 |
| ALEUTIAN | 1 | | | | 1 | | | | | | | 25.3 |
| OTHER | 131 | | 9 | 32 | 29 | 21 | 12 | 15 | 5 | 8 | | 31.7 |
| UNKNOWN | 90 | 1 | 14 | 16 | 23 | 12 | 11 | 4 | 2 | 7 | | 30.3 |

| HISPANIC ORIGIN | TOTAL | AGE AT ADMISSION | | | | | | | | | | AVERAGE AGE |
|---------------------|-------|------------------|----------|----------|----------|----------|----------|----------|----------|----------|-------------|-------------|
| | | UNDER 18 | 18 TO 20 | 21 TO 24 | 25 TO 29 | 30 TO 34 | 35 TO 39 | 40 TO 44 | 45 TO 49 | 50 TO 64 | 65 AND OVER | |
| TOTAL | 23219 | 68 | 1373 | 3555 | 4477 | 3268 | 3456 | 3095 | 2206 | 1648 | 73 | 34.4 |
| HISPANIC | 2044 | 18 | 191 | 452 | 519 | 297 | 232 | 167 | 78 | 88 | 2 | 30.7 |
| NON-HISPANIC | 19350 | 48 | 1038 | 2770 | 3613 | 2766 | 3031 | 2715 | 1907 | 1395 | 67 | 34.8 |
| UNKNOWN | 1825 | 2 | 144 | 333 | 345 | 205 | 193 | 213 | 221 | 165 | 4 | 34.3 |

FEMALE

| RACE | TOTAL | AGE AT ADMISSION | | | | | | | | | | AVERAGE AGE |
|--------------------|-------|------------------|----------|----------|----------|----------|----------|----------|----------|----------|-------------|-------------|
| | | UNDER 18 | 18 TO 20 | 21 TO 24 | 25 TO 29 | 30 TO 34 | 35 TO 39 | 40 TO 44 | 45 TO 49 | 50 TO 64 | 65 AND OVER | |
| TOTAL | 4328 | 5 | 165 | 605 | 803 | 662 | 776 | 663 | 401 | 243 | 5 | 34.8 |
| WHITE | 3023 | 1 | 109 | 427 | 577 | 443 | 532 | 453 | 303 | 173 | 5 | 34.9 |
| BLACK | 810 | 2 | 34 | 97 | 129 | 112 | 161 | 146 | 72 | 57 | | 35.6 |
| N.A. INDIAN | 303 | 1 | 8 | 45 | 60 | 64 | 48 | 53 | 14 | 10 | | 33.4 |
| ASIAN/P.I. | 90 | | 11 | 15 | 12 | 21 | 19 | 4 | 7 | 1 | | 31.5 |
| ESKIMO | 3 | | | | | 3 | | | | | | 30.7 |
| ALEUTIAN | 4 | | | | | | | | 4 | | | 48.8 |
| OTHER | 88 | 1 | 3 | 19 | 22 | 19 | 15 | 6 | 1 | 2 | | 30.4 |
| UNKNOWN | 7 | | | 2 | 3 | | 1 | 1 | | | | 28.6 |

| HISPANIC ORIGIN | TOTAL | AGE AT ADMISSION | | | | | | | | | | AVERAGE AGE |
|---------------------|-------|------------------|----------|----------|----------|----------|----------|----------|----------|----------|-------------|-------------|
| | | UNDER 18 | 18 TO 20 | 21 TO 24 | 25 TO 29 | 30 TO 34 | 35 TO 39 | 40 TO 44 | 45 TO 49 | 50 TO 64 | 65 AND OVER | |
| TOTAL | 4328 | 5 | 165 | 605 | 803 | 662 | 776 | 663 | 401 | 243 | 5 | 34.8 |
| HISPANIC | 305 | 3 | 7 | 71 | 80 | 60 | 49 | 18 | 12 | 5 | | 30.8 |
| NON-HISPANIC | 3439 | 2 | 120 | 435 | 632 | 518 | 609 | 567 | 338 | 214 | 4 | 35.3 |
| UNKNOWN | 584 | | 38 | 99 | 91 | 84 | 118 | 78 | 51 | 24 | 1 | 34 |

TABLE 3D
ADMISSIONS BY COUNTY OF CONVICTION AND RACE
AS OF JUNE 30, 2008

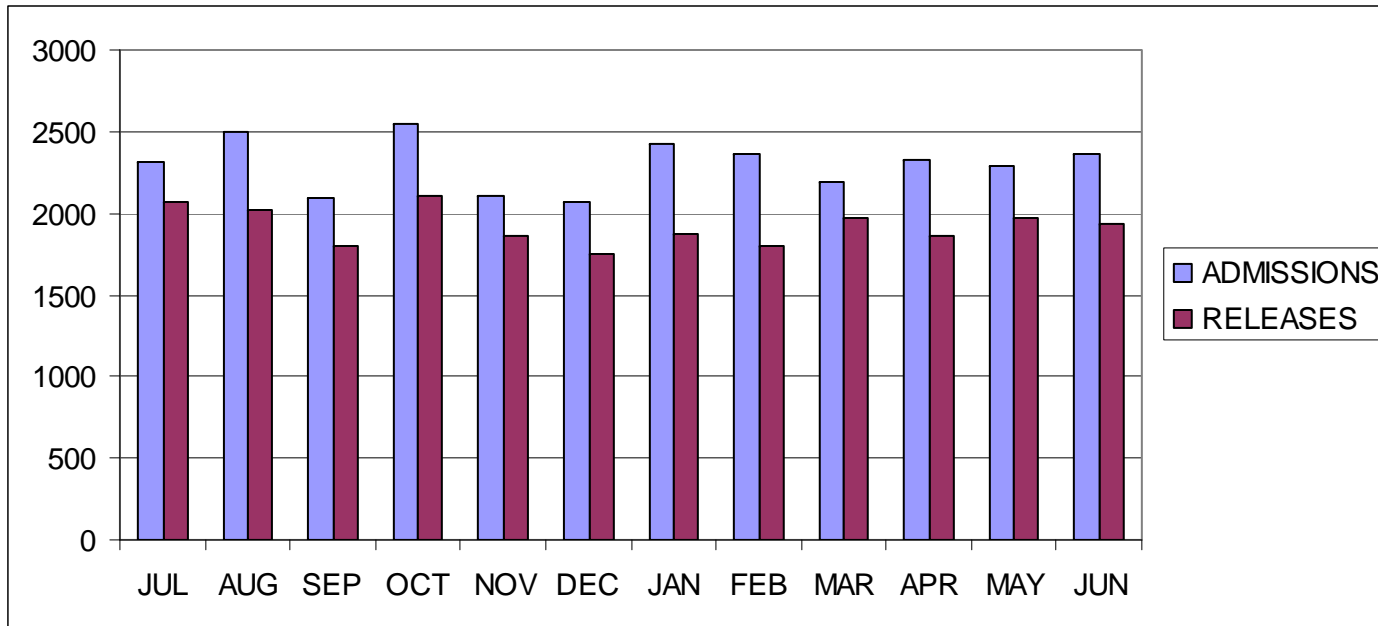
| COUNTY OF CONVICTION | TOTAL | RACE | | | | | | | | | | | | | | | |
|----------------------|-------|-------|------|-------|------|-------------|------|------------|-----|--------|-----|----------|-----|-------|-----|---------|-----|
| | | WHITE | | BLACK | | N.A. INDIAN | | ASIAN/P.I. | | ESKIMO | | ALEUTIAN | | OTHER | | UNKNOWN | |
| | | N | % | N | % | N | % | N | % | N | % | N | % | N | % | N | % |
| TOTAL | 27547 | 18304 | 66.4 | 6633 | 24.1 | 1548 | 5.6 | 735 | 2.7 | 6 | 0 | 5 | 0 | 219 | 0.8 | 97 | 0.4 |
| INTERSTATE | 8 | 5 | 62.5 | 2 | 25 | 1 | 12.5 | | | | | | | | | | |
| ADAMS | 37 | 35 | 94.6 | | | 2 | 5.4 | | | | | | | | | | |
| ASOTIN | 95 | 87 | 91.6 | 4 | 4.2 | 4 | 4.2 | | | | | | | | | | |
| BENTON | 506 | 444 | 87.7 | 42 | 8.3 | 11 | 2.2 | 4 | 0.8 | | | | | 5 | 1 | | |
| CHELAN | 250 | 233 | 93.2 | 5 | 2 | 8 | 3.2 | | | | | | | 1 | 0.4 | 3 | 1.2 |
| CLALLAM | 135 | 124 | 91.9 | 3 | 2.2 | 7 | 5.2 | 1 | 0.7 | | | | | | | | |
| CLARK | 1191 | 996 | 83.6 | 119 | 10 | 36 | 3 | 24 | 2 | | | | | 12 | 1 | 4 | 0.3 |
| COLUMBIA | 17 | 17 | 100 | | | | | | | | | | | | | | |
| COWLITZ | 649 | 583 | 89.8 | 30 | 4.6 | 24 | 3.7 | 5 | 0.8 | | | | | 6 | 0.9 | 1 | 0.2 |
| DOUGLAS | 92 | 74 | 80.4 | 10 | 10.9 | 7 | 7.6 | 1 | 1.1 | | | | | | | | |
| FERRY | 9 | 8 | 88.9 | | | 1 | 11.1 | | | | | | | | | | |
| FRANKLIN | 188 | 135 | 71.8 | 45 | 23.9 | | | 2 | 1.1 | | | | | 5 | 2.7 | 1 | 0.5 |
| GARFIELD | 6 | 5 | 83.3 | | | 1 | 16.7 | | | | | | | | | | |
| GRANT | 250 | 201 | 80.4 | 26 | 10.4 | 18 | 7.2 | | | | | | | 4 | 1.6 | 1 | 0.4 |
| GRAYS HARBOR | 271 | 225 | 83 | 5 | 1.8 | 40 | 14.8 | 1 | 0.4 | | | | | | | | |
| ISLAND | 74 | 67 | 90.5 | 4 | 5.4 | 2 | 2.7 | | | | | | | | | 1 | 1.4 |
| JEFFERSON | 39 | 34 | 87.2 | | | 5 | 12.8 | | | | | | | | | | |
| KING | 5441 | 2041 | 37.5 | 2818 | 51.8 | 249 | 4.6 | 266 | 4.9 | | | 5 | 0.1 | 54 | 1 | 8 | 0.1 |
| KITSAP | 610 | 428 | 70.2 | 111 | 18.2 | 38 | 6.2 | 32 | 5.2 | | | | | 1 | 0.2 | | |
| KITTITAS | 39 | 32 | 82.1 | 1 | 2.6 | 4 | 10.3 | 1 | 2.6 | | | | | 1 | 2.6 | | |
| KLICKITAT | 27 | 20 | 74.1 | | | 6 | 22.2 | | | | | | | 1 | 3.7 | | |
| LEWIS | 379 | 354 | 93.4 | 7 | 1.8 | 13 | 3.4 | 1 | 0.3 | | | | | 4 | 1.1 | | |
| LINCOLN | 16 | 10 | 62.5 | | | 6 | 37.5 | | | | | | | | | | |
| MASON | 208 | 165 | 79.3 | 3 | 1.4 | 37 | 17.8 | 1 | 0.5 | | | | | 2 | 1 | | |
| OKANOGAN | 80 | 42 | 52.5 | | | 37 | 46.3 | 1 | 1.3 | | | | | | | | |
| PACIFIC | 86 | 80 | 93 | | | 3 | 3.5 | 3 | 3.5 | | | | | | | | |
| PEND OREILLE | 7 | 7 | 100 | | | | | | | | | | | | | | |
| PIERCE | 3039 | 1674 | 55.1 | 1108 | 36.5 | 132 | 4.3 | 108 | 3.6 | | | | | 14 | 0.5 | 3 | 0.1 |
| SAN JUAN | 15 | 12 | 80 | 3 | 20 | | | | | | | | | | | | |
| SKAGIT | 237 | 206 | 86.9 | 12 | 5.1 | 10 | 4.2 | 3 | 1.3 | | | | | 3 | 1.3 | 3 | 1.3 |
| SKAMANIA | 32 | 29 | 90.6 | | | 3 | 9.4 | | | | | | | | | | |
| SNOHOMISH | 1226 | 944 | 77 | 172 | 14 | 64 | 5.2 | 25 | 2 | 2 | 0.2 | | | 14 | 1.1 | 5 | 0.4 |
| SPOKANE | 1603 | 1155 | 72.1 | 321 | 20 | 108 | 6.7 | 16 | 1 | | | | | 1 | 0.1 | 2 | 0.1 |
| STEVENS | 57 | 51 | 89.5 | 1 | 1.8 | 5 | 8.8 | | | | | | | | | | |
| THURSTON | 722 | 602 | 83.4 | 65 | 9 | 28 | 3.9 | 23 | 3.2 | 1 | 0.1 | | | 2 | 0.3 | 1 | 0.1 |
| WAHIAKUM | 14 | 14 | 100 | | | | | | | | | | | | | | |
| WALLA WALLA | 202 | 182 | 90.1 | 11 | 5.4 | 8 | 4 | | | | | | | | | 1 | 0.5 |
| WHATCOM | 499 | 348 | 69.7 | 49 | 9.8 | 90 | 18 | 4 | 0.8 | | | | | 6 | 1.2 | 2 | 0.4 |
| WHITMAN | 24 | 21 | 87.5 | 3 | 12.5 | | | | | | | | | | | | |
| YAKIMA | 822 | 633 | 77 | 78 | 9.5 | 88 | 10.7 | 1 | 0.1 | | | | | 13 | 1.6 | 9 | 1.1 |
| JUVENILE | 13 | 5 | 38.5 | 4 | 30.8 | 4 | 30.8 | | | | | | | | | | |
| UNKNOWN | 8332 | 5976 | 71.7 | 1571 | 18.9 | 448 | 5.4 | 212 | 2.5 | 3 | 0 | | | 70 | 0.8 | 52 | 0.6 |

| COUNTY OF CONVICTION | HISPANIC ORIGIN | | | | | |
|----------------------|-----------------|------|--------------|------|---------|------|
| | HISPANIC | | NON-HISPANIC | | UNKNOWN | |
| | N | % | N | % | N | % |
| TOTAL | 2349 | 8.5 | 22789 | 82.7 | 2409 | 8.7 |
| INTERSTATE | | | 8 | 100 | | |
| ADAMS | 24 | 64.9 | 12 | 32.4 | 1 | 2.7 |
| ASOTIN | 3 | 3.2 | 92 | 96.8 | | |
| BENTON | 84 | 16.6 | 403 | 79.6 | 19 | 3.8 |
| CHELAN | 42 | 16.8 | 207 | 82.8 | 1 | 0.4 |
| CLALLAM | 6 | 4.4 | 128 | 94.8 | 1 | 0.7 |
| CLARK | 109 | 9.2 | 1026 | 86.1 | 56 | 4.7 |
| COLUMBIA | | | 17 | 100 | | |
| COWLITZ | 50 | 7.7 | 581 | 89.5 | 18 | 2.8 |
| DOUGLAS | 18 | 19.6 | 74 | 80.4 | | |
| FERRY | | | 9 | 100 | | |
| FRANKLIN | 66 | 35.1 | 117 | 62.2 | 5 | 2.7 |
| GARFIELD | | | 6 | 100 | | |
| GRANT | 88 | 35.2 | 161 | 64.4 | 1 | 0.4 |
| GRAYS HARBOR | 12 | 4.4 | 254 | 93.7 | 5 | 1.8 |
| ISLAND | 1 | 1.4 | 68 | 91.9 | 5 | 6.8 |
| JEFFERSON | | | 33 | 84.6 | 6 | 15.4 |
| KING | 323 | 5.9 | 4949 | 91 | 169 | 3.1 |
| KITSAP | 16 | 2.6 | 557 | 91.3 | 37 | 6.1 |
| KITTITAS | 3 | 7.7 | 35 | 89.7 | 1 | 2.6 |
| KLICKITAT | 2 | 7.4 | 25 | 92.6 | | |
| LEWIS | 35 | 9.2 | 333 | 87.9 | 11 | 2.9 |
| LINCOLN | | | 15 | 93.8 | 1 | 6.3 |
| MASON | 9 | 4.3 | 195 | 93.8 | 4 | 1.9 |
| OKANOGAN | 11 | 13.8 | 69 | 86.3 | | |
| PACIFIC | 4 | 4.7 | 80 | 93 | 2 | 2.3 |
| PEND OREILLE | | | 7 | 100 | | |
| PIERCE | 153 | 5 | 2847 | 93.7 | 39 | 1.3 |
| SAN JUAN | 1 | 6.7 | 14 | 93.3 | | |
| SKAGIT | 55 | 23.2 | 181 | 76.4 | 1 | 0.4 |
| SKAMANIA | 2 | 6.3 | 30 | 93.8 | | |
| SNOHOMISH | 60 | 4.9 | 1139 | 92.9 | 27 | 2.2 |
| SPOKANE | 66 | 4.1 | 1446 | 90.2 | 91 | 5.7 |
| STEVENS | | | 53 | 93 | 4 | 7 |
| THURSTON | 37 | 5.1 | 660 | 91.4 | 25 | 3.5 |
| WAHIAKUM | 1 | 7.1 | 13 | 92.9 | | |
| WALLA WALLA | 31 | 15.3 | 170 | 84.2 | 1 | 0.5 |
| WHATCOM | 45 | 9 | 447 | 89.6 | 7 | 1.4 |
| WHITMAN | | | 24 | 100 | | |
| YAKIMA | 287 | 34.9 | 514 | 62.5 | 21 | 2.6 |
| JUVENILE | | | 13 | 100 | | |
| UNKNOWN | 705 | 8.5 | 5777 | 69.3 | 1850 | 22.2 |

TABLE 3E
ADMISSIONS BY OFFENSE AND TYPE OF ADMISSION
AS OF JUNE 30, 2008

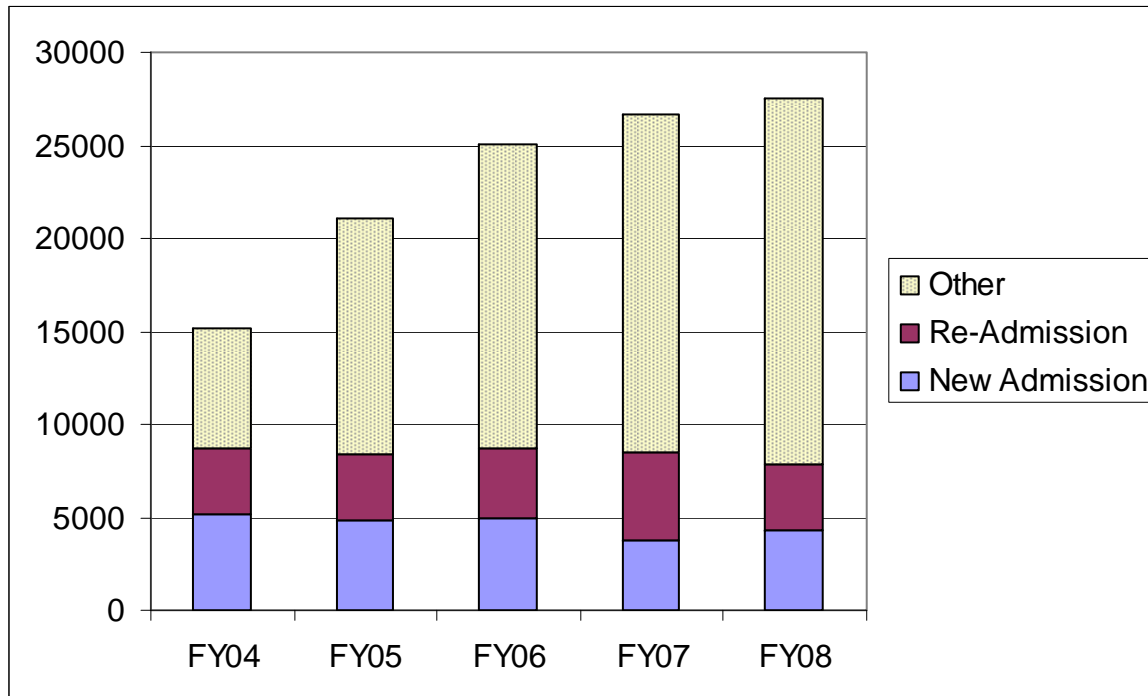
| OFFENSE TYPE | TOTAL | NEW ADMISSION | | READMISSION | | OTHER | |
|----------------------------|-------|---------------|------|-------------|------|-------|------|
| | | N | % | N | % | N | % |
| TOTAL | 27547 | 4322 | 15.7 | 3575 | 13 | 19650 | 71.3 |
| MURDER 1 | 58 | 34 | 58.6 | 13 | 22.4 | 11 | 19 |
| MURDER 2 | 72 | 50 | 69.4 | 9 | 12.5 | 13 | 18.1 |
| MANSLAUGHTER 1 | 35 | 13 | 37.1 | 4 | 11.4 | 18 | 51.4 |
| MANSLAUGHTER 2 | 56 | 13 | 23.2 | 3 | 5.4 | 40 | 71.4 |
| VEH HOMICIDE | 77 | 43 | 55.8 | 4 | 5.2 | 30 | 39 |
| RAPE OF CHILD 1 | 127 | 78 | 61.4 | 4 | 3.1 | 45 | 35.4 |
| RAPE 1 | 32 | 10 | 31.3 | 3 | 9.4 | 19 | 59.4 |
| RAPE 2 | 44 | 17 | 38.6 | 4 | 9.1 | 23 | 52.3 |
| RAPE OTHER | 109 | 12 | 11 | 10 | 9.2 | 87 | 79.8 |
| RAPE OF CHILD 2 | 61 | 34 | 55.7 | 5 | 8.2 | 22 | 36.1 |
| VIO SEX, CHILD | 151 | 59 | 39.1 | 6 | 4 | 86 | 57 |
| IND LIBERTIES | 95 | 24 | 25.3 | 5 | 5.3 | 66 | 69.5 |
| NV SEX, CHILD | 537 | 138 | 25.7 | 30 | 5.6 | 369 | 68.7 |
| OTHER SEX CRIME | 358 | 88 | 24.6 | 154 | 43 | 116 | 32.4 |
| PUBLIC NUISANCE SEX | 31 | 16 | 51.6 | 7 | 22.6 | 8 | 25.8 |
| ROBBERY 1 | 674 | 178 | 26.4 | 78 | 11.6 | 418 | 62 |
| ROBBERY 2 | 710 | 115 | 16.2 | 62 | 8.7 | 533 | 75.1 |
| EXTORTION 1 | 11 | 4 | 36.4 | | | 7 | 63.6 |
| EXTORTION 2 | 3 | 1 | 33.3 | | | 2 | 66.7 |
| ASSAULT 1 | 82 | 42 | 51.2 | 21 | 25.6 | 19 | 23.2 |
| ASSAULT 2 | 1339 | 262 | 19.6 | 144 | 10.8 | 933 | 69.7 |
| VEHICULR ASSAULT | 160 | 44 | 27.5 | 19 | 11.9 | 97 | 60.6 |
| ASSAULT OTHER | 2014 | 419 | 20.8 | 442 | 21.9 | 1153 | 57.2 |
| KIDNAP 1 | 9 | 5 | 55.6 | 1 | 11.1 | 3 | 33.3 |
| KIDNAP 2 | 58 | 8 | 13.8 | 6 | 10.3 | 44 | 75.9 |
| ARSON 1 | 27 | 7 | 25.9 | 1 | 3.7 | 19 | 70.4 |
| ARSON 2 | 53 | 9 | 17 | 6 | 11.3 | 38 | 71.7 |
| BURGLARY 1 | 196 | 61 | 31.1 | 14 | 7.1 | 121 | 61.7 |
| BURGLARY 2 | 895 | 279 | 31.2 | 280 | 31.3 | 336 | 37.5 |
| THEFT 1 | 349 | 120 | 34.4 | 101 | 28.9 | 128 | 36.7 |
| AUTO THEFT | 245 | 48 | 19.6 | 92 | 37.6 | 105 | 42.9 |
| FORGERY | 392 | 75 | 19.1 | 134 | 34.2 | 183 | 46.7 |
| OTHER PROPERTY | 1044 | 249 | 23.9 | 416 | 39.8 | 379 | 36.3 |
| THEFT 2 | 345 | 44 | 12.8 | 158 | 45.8 | 143 | 41.4 |
| DRUG CRIME | 5237 | 832 | 15.9 | 944 | 18 | 3461 | 66.1 |
| OTHER FELONY | 427 | 72 | 16.9 | 130 | 30.4 | 225 | 52.7 |
| MISDEMEANANT | 2 | 1 | 50 | | | 1 | 50 |
| UNKNOWN | 11432 | 818 | 7.2 | 265 | 2.3 | 10349 | 90.5 |

**CHART 3:
COMPARISON OF ADMISSIONS AND RELEASES BY MONTH
FISCAL YEAR 2006**



**CHART 3-1:
ADMISSIONS BY TYPE OF ADMISSIONS OVER LAST FIVE FISCAL YEARS**

▽ Admissions have increased in the last four years, mostly due to increase in Community Custody Violators/Other.



**CHART 3-2:
ADMISSIONS BY AGE AT ADMISSION OVER LAST FIVE FISCAL YEARS**

∇ The numbers of admissions have been increasing, and the age population is slightly aging.

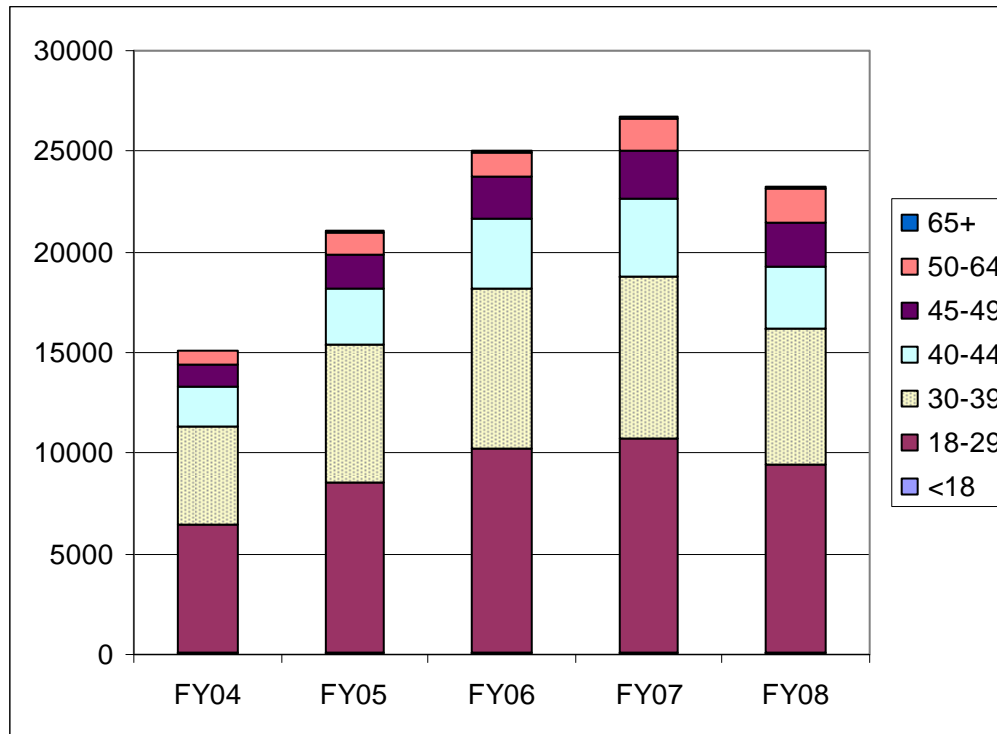


CHART 3-3: ADMISSIONS BY SEX OVER LAST FIVE FISCAL YEARS

- ▽ Female admissions have been stable for the last three years and currently represent 18.6% of all admissions.

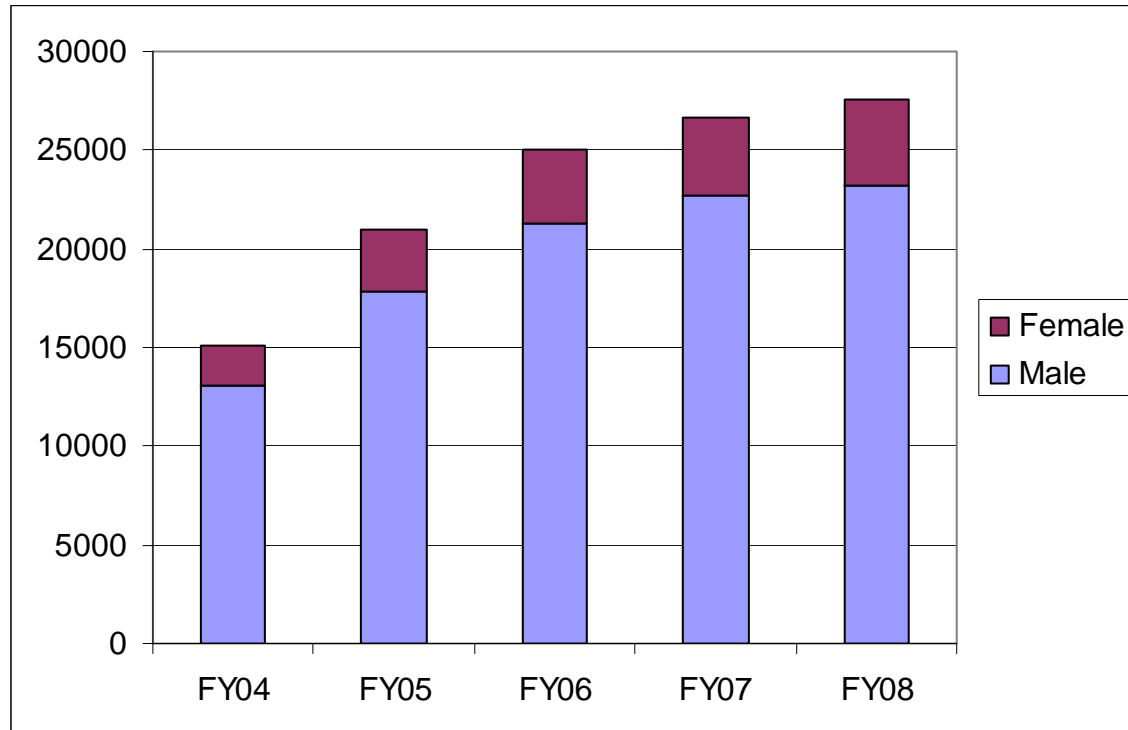
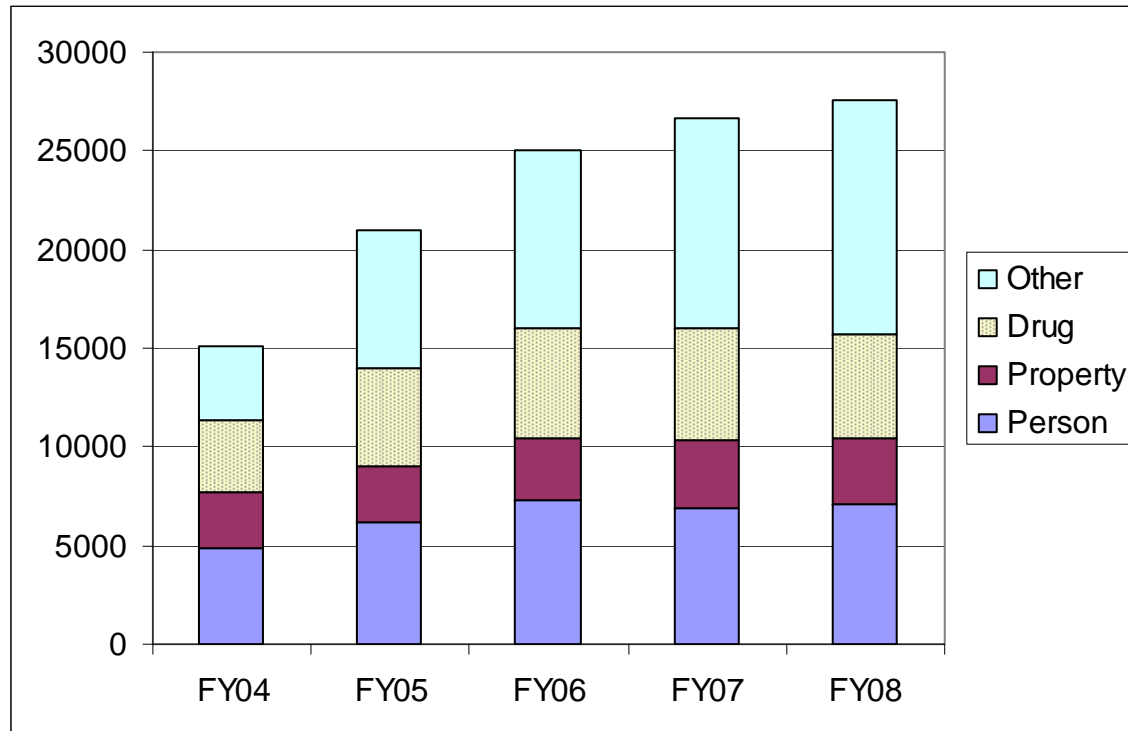


CHART 3-4: ADMISSIONS BY OFFENSE CATEGORY OVER LAST FIVE FISCAL YEARS

- ▽ Community custody violations continue to be a driving force behind the increase in admissions.





**STATE OF WASHINGTON
DEPARTMENT OF CORRECTIONS
ADULT CORRECTIONS FACILITIES**

RELEASES FROM FACILITIES

TABLE 4A
RELEASES BY MONTH, TYPE OF RELEASE, AND SEX
AS OF JUNE 30, 2008

MALE

| MONTH | TOTAL | TYPE OF RELEASE | | | | | |
|------------------|--------|-----------------|--------------------|------------|---------|-------|----------|
| | | DISCHARGE | REL TO COM CUST | REL TO PRS | PAROLED | OTHER | VIOL REL |
| TOTAL | 23,012 | 1,858 | 4,941 | 24 | 29 | 81 | 16,079 |
| JULY | 2067 | 169 | 492 | 3 | 2 | 18 | 1,383 |
| AUGUST | 2020 | 156 | 433 | 5 | 2 | 6 | 1,418 |
| SEPTEMBER | 1806 | 149 | 321 | 1 | 2 | 8 | 1,325 |
| OCTOBER | 2103 | 170 | 439 | 3 | 3 | 5 | 1,483 |
| NOVEMBER | 1857 | 157 | 422 | 1 | 5 | 2 | 1,270 |
| DECEMBER | 1751 | 173 | 421 | 1 | 1 | 4 | 1,151 |
| JANUARY | 1,868 | 146 | 450 | 4 | 3 | 7 | 1,258 |
| FEBRUARY | 1800 | 125 | 394 | 1 | 2 | 9 | 1,269 |
| MARCH | 1971 | 158 | 367 | 3 | 4 | 6 | 1,433 |
| APRIL | 1858 | 150 | 392 | 1 | 1 | 8 | 1,306 |
| MAY | 1977 | 148 | 392 | . | 4 | 2 | 1,431 |
| JUNE | 1934 | 157 | 418 | 1 | . | 6 | 1,352 |

FEMALE

| MONTH | TOTAL | TYPE OF RELEASE | | | | | |
|------------------|-------|-----------------|--------------------|------------|---------|-------|----------|
| | | DISCHARGE | REL TO COM CUST | REL TO PRS | PAROLED | OTHER | VIOL REL |
| TOTAL | 4420 | 302 | 811 | 2 | 3 | 4 | 3,298 |
| JULY | 375 | 39 | 77 | . | . | 2 | 257 |
| AUGUST | 374 | 23 | 72 | . | . | . | 279 |
| SEPTEMBER | 328 | 22 | 53 | . | . | . | 253 |
| OCTOBER | 395 | 26 | 81 | 1 | . | 2 | 285 |
| NOVEMBER | 352 | 17 | 75 | . | . | . | 260 |
| DECEMBER | 349 | 32 | 64 | . | . | . | 253 |
| JANUARY | 404 | 19 | 76 | . | 1 | . | 308 |
| FEBRUARY | 362 | 23 | 64 | . | 1 | . | 274 |
| MARCH | 379 | 28 | 66 | . | . | . | 285 |
| APRIL | 374 | 25 | 60 | . | 1 | . | 288 |
| MAY | 376 | 33 | 63 | 1 | . | . | 279 |
| JUNE | 352 | 15 | 60 | . | . | . | 277 |

**TABLE 4B
RELEASES BY TYPE OF RELEASE, RACE AND HISPANIC ORIGIN
AS OF JUNE 30, 2008**

| RELEASE TYPE | TOTAL | RACE | | | | | | | | | | | | | | | |
|-----------------|--------|--------|------|-------|------|-------------|-----|------------|-----|--------|---|----------|---|-------|-----|---------|-----|
| | | WHITE | | BLACK | | N.A. INDIAN | | ASIAN/P.I. | | ESKIMO | | ALEUTIAN | | OTHER | | UNKNOWN | |
| | | N | % | N | % | N | % | N | % | N | % | N | % | N | % | N | % |
| TOTAL | 27,432 | 18,487 | 67.4 | 6,511 | 23.7 | 1,449 | 5.3 | 673 | 2.5 | 9 | 0 | 5 | 0 | 224 | 0.8 | 74 | 0.3 |
| DISCHARGE | 2160 | 1649 | 76.3 | 317 | 14.7 | 122 | 5.6 | 54 | 2.5 | 1 | 0 | . | . | 14 | 0.6 | 3 | 0.1 |
| REL TO COM CUST | 5752 | 4150 | 72.1 | 1135 | 19.7 | 225 | 3.9 | 162 | 2.8 | . | . | . | . | 66 | 1.1 | 13 | 0.2 |
| REL TO PRS | 26 | 19 | 73.1 | 6 | 23.1 | 1 | 3.8 | . | . | . | . | . | . | . | . | . | . |
| PAROLED | 32 | 21 | 65.6 | 7 | 21.9 | 3 | 9.4 | . | . | . | . | . | . | . | . | 1 | 3.1 |

| HISPANIC ORIGIN | | | | | |
|-----------------|------|--------------|------|---------|-----|
| HISPANIC | | NON-HISPANIC | | UNKNOWN | |
| N | % | N | % | N | % |
| 2,355 | 8.6 | 22,725 | 82.8 | 2,352 | 8.6 |
| 205 | 9.5 | 1926 | 89.2 | 29 | 1.3 |
| 741 | 12.9 | 4,908 | 85.3 | 103 | 1.8 |
| . | . | 25 | 96.2 | 1 | 3.8 |
| 4 | 12.5 | 27 | 84.4 | 1 | 3.1 |

**TABLE 4C
RELEASE TYPE BY LENGTH OF STAY
AS OF JUNE 30, 2008**

| RELTYPE | TOTAL | MONTHS | | | | | | | | | | | AVERAGE STAY | |
|------------------------|--------|--------|---------|----------|----------|----------|----------|----------|----------|----------|----------|-----------|--------------|------------------|
| | | 0 TO 5 | 6 TO 11 | 12 TO 17 | 18 TO 23 | 24 TO 35 | 36 TO 47 | 48 TO 59 | 60 TO 71 | 72 TO 83 | 84 TO 95 | 96 TO 107 | | 10 YRS. AND OVER |
| TOTAL | 27,432 | 20,813 | 2,842 | 1,169 | 652 | 760 | 457 | 218 | 129 | 103 | 61 | 49 | 179 | 6.8 |
| DISCHARGE | 2,160 | 485 | 830 | 326 | 145 | 190 | 100 | 36 | 12 | 11 | 2 | 6 | 17 | 15.6 |
| REL TO COM CUST | 5,752 | 969 | 1,980 | 834 | 496 | 552 | 344 | 171 | 111 | 84 | 52 | 40 | 119 | 21.5 |
| REL TO PRS | 26 | 2 | 1 | 1 | 2 | | 1 | 2 | 1 | 3 | 1 | 2 | 10 | 87.9 |
| PAROLED | 32 | 1 | | | 2 | 6 | 5 | 2 | 3 | | | | 13 | 144.8 |
| OTHER | 85 | 8 | 12 | 3 | 6 | 10 | 7 | 6 | 2 | 4 | 6 | 1 | 20 | 86.3 |
| VIOL REL | 19,377 | 19,348 | 19 | 5 | 1 | 2 | | 1 | | 1 | | | | 0.7 |

OTHER RELEASE INCLUDES PARDON
SENTENCE VACATE, DEATH AND OUT ON BOND.

**TABLE 4C-1
LENGTH OF STAY OF RELEASES BY CATEGORY OF ADMISSION
AS OF JUNE 30, 2008**

| CATEGORY | TOTAL | AVERAGE LENGTH OF STAY IN MONTHS |
|----------------------|--------------|---|
| TOTAL | 8,140 | 21 |
| NEW ADMISSION | 4,462 | 22.3 |
| READMISSION | 3,678 | 19.4 |

LENGTH OF STAY IS CALCULATED ONLY FOR THOSE WHO HAVE PAROLED, BEEN RELEASED TO CCI OR PRS, OR WHOSE SENTENCES HAVE EXPIRED. DOES NOT INCLUDE CCI/WEC VIOLATOR OR OTHER RELEASES.

TABLE 4C-2
LENGTH OF STAY OF RELEASES BY SPECIAL SENTENCES: DOSA
AS OF JUNE 30, 2008

| | NUMBER | AVERAGE LENGTH OF STAY IN MONTHS |
|--------------|--------|-------------------------------------|
| TOTAL | 621 | 14.3 |
| DOSA | 621 | 14.3 |

TABLE 4C-3
LENGTH OF STAY OF RELEASES BY SPECIAL SENTENCES: VIOLATORS
AS OF JUNE 30, 2008

| CATEGORY | NUMBER | AVERAGE LENGTH OF STAY IN MONTHS |
|-----------------|---------------|---|
| All | 19,377 | 0.7 |
| COMM | 9,746 | 0.7 |
| OTHR | 849 | 0.5 |
| PRIS | 8,782 | 0.8 |

VIOLATORS MAY HAVE VIOLATED THE CONDITIONS OF A COMMUNITY OR PRISON SENTENCE WHILE ON COMMUNITY CUSTODY.

THE CATEGORY '**OTHER**' CONTAINS OFFENDERS BEING DETAINED FOR PRE-HEARING CONFINEMENT.

**TABLE 4D-2
LENGTH OF STAY OF RELEASES BY OFFENSE
AS OF JUNE 30, 2008**

READMISSION

| OFFENSE | TOTAL | MONTHS | | | | | | | | | | | 10 YRS. AND OVER | AVERAGE STAY |
|---------------------|-------|--------|---------|----------|----------|----------|----------|----------|----------|----------|----------|-----------|------------------------|-----------------|
| | | 0 TO 5 | 6 TO 11 | 12 TO 17 | 18 TO 23 | 24 TO 35 | 36 TO 47 | 48 TO 59 | 60 TO 71 | 72 TO 83 | 84 TO 95 | 96 TO 107 | | |
| TOTAL | 3,678 | 642 | 1,213 | 605 | 317 | 393 | 239 | 108 | 58 | 31 | 18 | 15 | 39 | 19.4 |
| ARSON 1 | 3 | . | . | 1 | . | . | 1 | . | 1 | . | . | . | . | 39.1 |
| ARSON 2 | 3 | . | . | 1 | 1 | 1 | . | . | . | . | . | . | . | 21.6 |
| ASSAULT 1 | 6 | . | . | . | 1 | 1 | . | . | . | 1 | . | . | 3 | 82.7 |
| ASSAULT 2 | 112 | 10 | 19 | 17 | 17 | 16 | 17 | 7 | 5 | 2 | 1 | . | 1 | 27.3 |
| ASSAULT OTHER | 452 | 44 | 116 | 73 | 51 | 78 | 50 | 22 | 9 | 6 | 1 | . | 2 | 22.7 |
| ASSAULT, DV | 137 | 15 | 45 | 27 | 21 | 18 | 8 | 2 | 1 | . | . | . | . | 16.7 |
| AUTO THEFT | 95 | 26 | 30 | 24 | 6 | 5 | 4 | . | . | . | . | . | . | 12 |
| BURGLARY 1 | 16 | . | 1 | . | 1 | 3 | 1 | 3 | 2 | 1 | 1 | 2 | 1 | 58.6 |
| BURGLARY 2 | 306 | 28 | 63 | 53 | 34 | 63 | 34 | 21 | 2 | 2 | 2 | . | 4 | 24.4 |
| DRUG CRIME | 1,168 | 234 | 487 | 156 | 87 | 93 | 59 | 24 | 14 | 6 | 3 | 3 | 2 | 15.3 |
| EXTORTION 2 | 2 | . | . | 2 | . | . | . | . | . | . | . | . | . | 10.4 |
| FORGERY | 169 | 31 | 69 | 29 | 19 | 11 | 7 | 1 | 2 | . | . | . | . | 13.9 |
| GENERIC PERS CRIME | 22 | 6 | 10 | 6 | . | . | . | . | . | . | . | . | . | 9.1 |
| IND LIBERTIES | 3 | . | . | . | . | . | 1 | . | 1 | . | . | . | 1 | 74.3 |
| KIDNAP 1 | 1 | . | . | . | . | . | . | . | . | 1 | . | . | . | 76.4 |
| KIDNAP 2 | 15 | . | 6 | 1 | 2 | 2 | 3 | . | 1 | . | . | . | . | 22.9 |
| MANSLAUGHTER 1 | 2 | . | . | . | . | . | . | . | . | . | . | 2 | . | 102.7 |
| MANSLAUGHTER 2 | 2 | . | . | 1 | . | . | . | . | 1 | . | . | . | . | 40.8 |
| MURDER 1 | 10 | . | . | . | . | 2 | 2 | . | . | . | . | . | 6 | 185.2 |
| MURDER 2 | 10 | . | . | . | . | 3 | 1 | . | 2 | . | . | . | 4 | 113.6 |
| NV SEX, CHILD | 31 | 2 | 7 | 2 | 4 | 3 | 4 | 7 | 1 | . | . | 1 | . | 31.9 |
| OTHER FELONY | 149 | 40 | 61 | 23 | 12 | 12 | 1 | . | . | . | . | . | . | 10.8 |
| OTHER PROPERTY | 361 | 64 | 142 | 90 | 27 | 25 | 8 | 2 | 1 | 1 | 1 | . | . | 13.1 |
| OTHER SEX CRIME | 43 | 6 | 21 | 11 | 3 | . | . | 1 | . | . | . | 1 | . | 13.4 |
| PUBLIC NUISANCE SEX | 4 | 1 | . | 3 | . | . | . | . | . | . | . | . | . | 12.8 |
| RAPE 1 | 5 | . | . | . | . | . | . | . | . | . | 2 | 1 | 2 | 123.8 |
| RAPE 2 | 6 | 1 | . | . | . | 2 | 1 | . | . | . | . | . | 2 | 78.3 |
| RAPE OF CHILD 1 | 11 | 2 | . | . | . | . | 2 | . | 1 | 2 | . | . | 4 | 88.5 |
| RAPE OF CHILD 2 | 1 | . | . | . | . | . | . | . | . | . | 1 | . | . | 92.5 |
| RAPE OTHER | 7 | 1 | . | 1 | . | 4 | . | 1 | . | . | . | . | . | 27.1 |
| ROBBERY 1 | 52 | 1 | 3 | 4 | 2 | 8 | 8 | 8 | 5 | 3 | 5 | 2 | 3 | 52.4 |
| ROBBERY 2 | 47 | 3 | 5 | 7 | 5 | 7 | 12 | 3 | 3 | . | . | 1 | 1 | 33.6 |
| THEFT 1 | 161 | 18 | 48 | 34 | 15 | 24 | 10 | 3 | 5 | 3 | 1 | . | . | 19.9 |
| THEFT 2 | 162 | 42 | 68 | 37 | 5 | 8 | 2 | . | . | . | . | . | . | 10.6 |
| UNKNOWN | 84 | 67 | 5 | 3 | 1 | 2 | 2 | 2 | . | 2 | . | . | . | 5.7 |
| VEH HOMICIDE | 2 | . | . | . | . | . | . | . | . | . | . | 1 | 1 | 120.9 |
| VEHICULR ASSAULT | 14 | . | 5 | 1 | 3 | 2 | 1 | 1 | . | 1 | . | . | . | 25.7 |
| VIO SEX, CHILD | 4 | . | . | . | . | . | . | . | 1 | . | . | 1 | 2 | 111.9 |

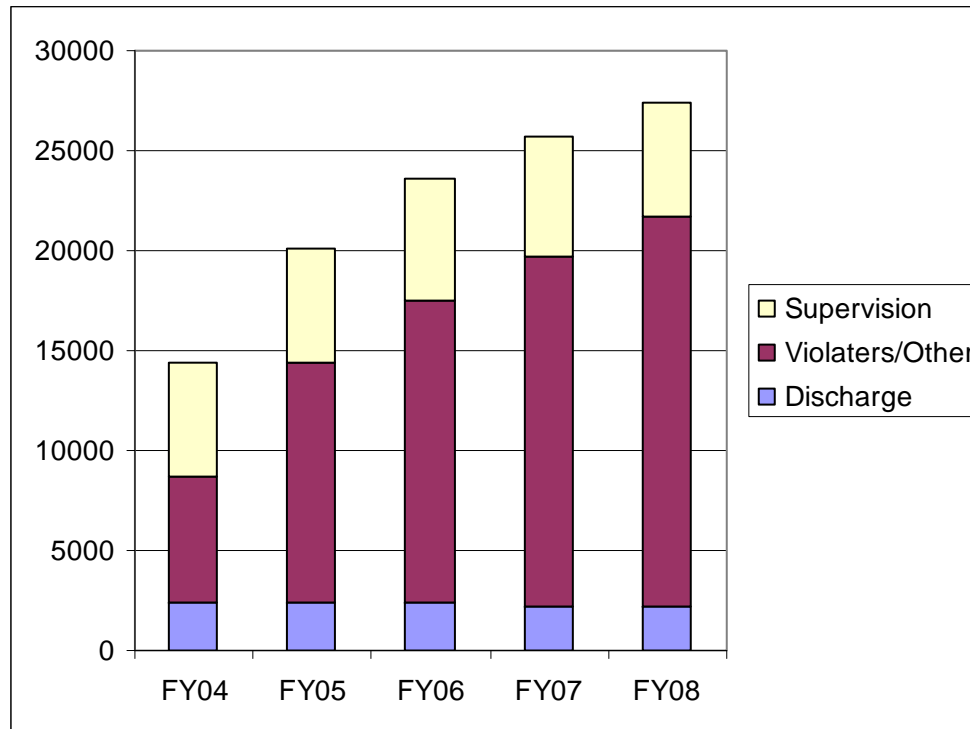
**TABLE 4D-4
LENGTH OF STAY OF RELEASES BY OFFENSE
AS OF JUNE 30, 2008**

DOSA

| OFFENSE | TOTAL | MONTHS | | | | | | | | AVERAGE STAY | |
|--------------------|-------|--------|---------|----------|----------|----------|----------|----------|----------|-----------------|----------|
| | | 0 TO 5 | 6 TO 11 | 12 TO 17 | 18 TO 23 | 24 TO 35 | 36 TO 47 | 48 TO 59 | 60 TO 71 | | 72 TO 83 |
| TOTAL | 621 | 137 | 170 | 140 | 80 | 68 | 18 | 6 | 1 | 1 | 14.3 |
| RAPE 2 | 1 | . | . | . | . | . | 1 | . | . | . | 43.2 |
| ROBBERY 1 | 1 | . | . | . | . | . | 1 | . | . | . | 44.9 |
| EXTORTION 2 | 1 | . | 1 | . | . | . | . | . | . | . | 9.2 |
| VEHICULR ASSAULT | 3 | 1 | . | . | 1 | 1 | . | . | . | . | 19.5 |
| ASSAULT OTHER | 106 | 21 | 26 | 28 | 13 | 10 | 6 | 2 | . | . | 15.1 |
| KIDNAP 2 | 1 | . | 1 | . | . | . | . | . | . | . | 11.8 |
| ASSAULT, DV | 14 | 1 | 8 | 4 | . | 1 | . | . | . | . | 11.4 |
| GENERIC PERS CRIME | 14 | 3 | 6 | 5 | . | . | . | . | . | . | 10.1 |
| BURGLARY 2 | 97 | 16 | 22 | 30 | 22 | 4 | 2 | . | . | 1 | 15 |
| THEFT 1 | 39 | 10 | 12 | 6 | 7 | 4 | . | . | . | . | 12.7 |
| AUTO THEFT | 15 | 10 | 1 | 3 | 1 | . | . | . | . | . | 7.8 |
| FORGERY | 25 | 8 | 10 | 5 | 1 | . | 1 | . | . | . | 9.9 |
| OTHER PROPERTY | 54 | 12 | 24 | 12 | 4 | 1 | . | 1 | . | . | 11 |
| THEFT 2 | 22 | 8 | 9 | 4 | . | 1 | . | . | . | . | 8 |
| DRUG CRIME | 200 | 39 | 44 | 35 | 27 | 44 | 7 | 3 | 1 | . | 17 |
| OTHER FELONY | 11 | 4 | 2 | 2 | 1 | 2 | . | . | . | . | 11.6 |
| UNKNOWN | 17 | 4 | 4 | 6 | 3 | . | . | . | . | . | 11.2 |

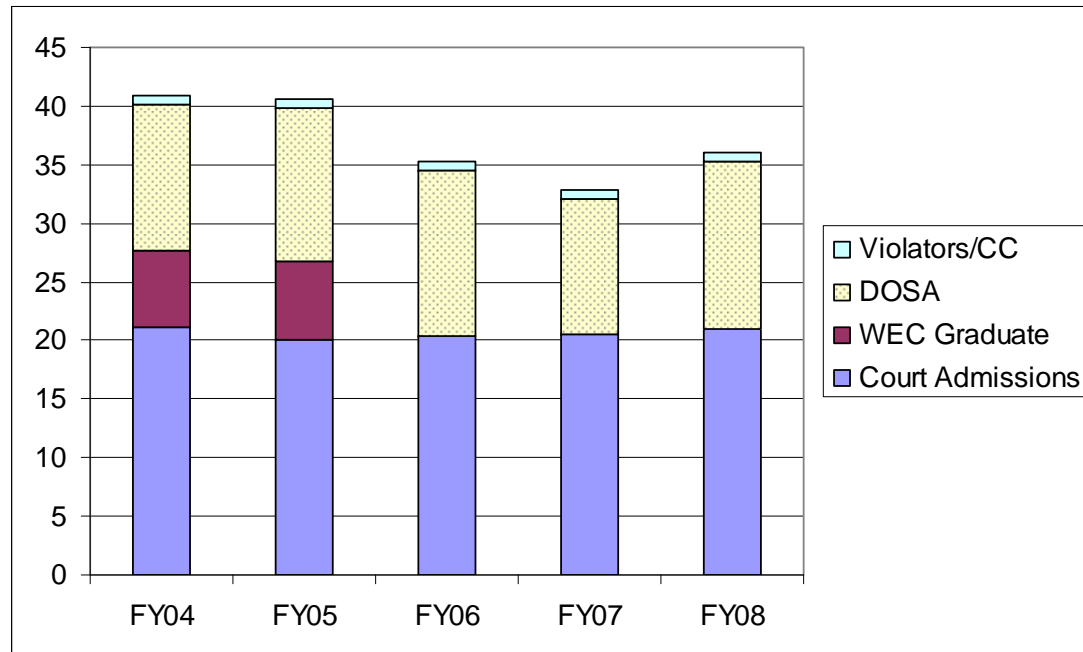
**CHART 4-1:
RELEASES BY TYPE OF RELEASE OVER LAST FIVE FISCAL YEARS**

- ▽ While violators have driven the dramatic increase in admissions in the last year, their average length of stay is less than one month.



**CHART 4-2:
AVERAGE LENGTH OF STAY OF RELEASES BY CATEGORY OF ADMISSION OVER LAST FIVE FISCAL YEARS**

▽ The average length of stay for violators has been consistently less than one month for the last four years.

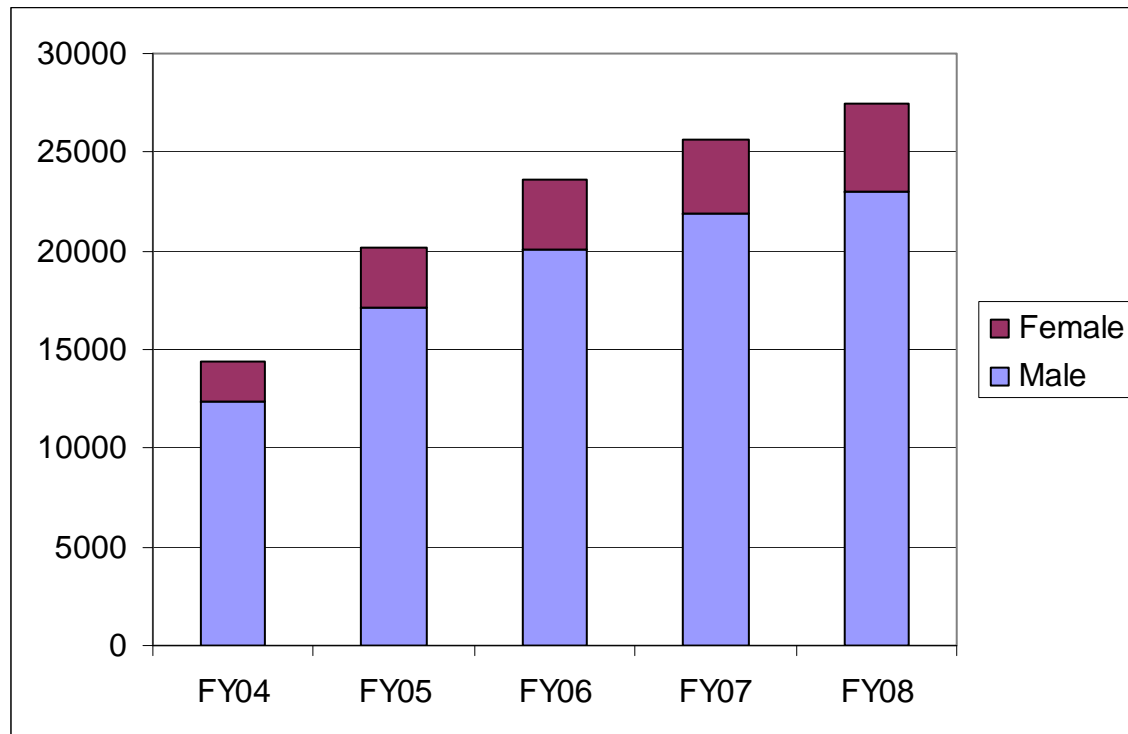


*CC Violations not included in the data for FY03.

**WEC Graduate not included in the data for FY06 or FY07.

**CHART 4-3:
RELEASES BY SEX OVER LAST FIVE FISCAL YEARS**

▽ Females represent between 13 to 16 percent of all releases.





**STATE OF WASHINGTON
DEPARTMENT OF CORRECTIONS
ADULT CORRECTIONS FACILITIES**

**CUSTODY DISTRIBUTIONS
OF RESIDENTS WITHIN FACILITIES**

**TABLE 5A
CURRENT CUSTODY CLASSIFICATION BY LOCATION
AS OF JUNE 30, 2008**

| LOCATION | TOTAL | ASSIGNED | | | | | | | | | | | | | | | | | | |
|-------------------|--------|----------|----|---------|----|--------|----|-------|-----|-------|-----|-------|----|---------|---|-----|----|---------|-----|--|
| | | CLOSE | | MAXIMUM | | MEDIUM | | M1 | | M2 | | M3 | | MINIMUM | | MIP | | UNCLASS | | |
| | | N | % | N | % | N | % | N | % | N | % | N | % | N | % | N | % | N | % | |
| TOTAL | 16,889 | 1,628 | 10 | 394 | 2 | 3,138 | 19 | 1,897 | 11 | 3,320 | 20 | 4,608 | 27 | 1 | 0 | 637 | 4 | 1,266 | 7 | |
| LONGVIEW WR | 45 | | | | | | | 45 | 100 | | | | | | | | | | | |
| OLYMPIA WR | 22 | | | | | | | 22 | 100 | | | | | | | | | | | |
| TRI CITY WR | 29 | | | | | | | 29 | 100 | | | | | | | | | | | |
| BROWNSTONE WR | 65 | | | | | | | 57 | 88 | 1 | 2 | 2 | 3 | | | 3 | 5 | 2 | 3 | |
| CHASE HSE WR | 21 | | | | | | | 21 | 100 | | | | | | | | | | | |
| REYNOLDS WR | 57 | 1 | 2 | | | | | 56 | 98 | | | | | | | | | | | |
| BELLHAM WR | 23 | | | | | | | 22 | 96 | | | 1 | 4 | | | | | | | |
| PROGRESS HSE WR | 67 | | | | | | | 67 | 100 | | | | | | | | | | | |
| AHTANUM VIEW WR | 48 | | | | | | | 48 | 100 | | | | | | | | | | | |
| MADISON INN WR | 16 | | | | | | | 16 | 100 | | | | | | | | | | | |
| RATCLIFF HSE WR | 17 | | | | | | | 16 | 94 | | | | | | | 1 | 6 | | | |
| PENINSULA WR | 53 | | | | | | | 53 | 100 | | | | | | | | | | | |
| BISHOP LEWIS WR | 53 | | | | | | | 53 | 100 | | | | | | | | | | | |
| RAP HOUSE WR | 11 | | | | | | | 11 | 100 | | | | | | | | | | | |
| LINCOLN PARK WR | 24 | | | | | | | 24 | 100 | | | | | | | | | | | |
| CLARK WR | 26 | | | | | | | 26 | 100 | | | | | | | | | | | |
| CBCC | 429 | 314 | 73 | 1 | 0 | 67 | 16 | 5 | 1 | 13 | 3 | 25 | 6 | | | 1 | 0 | 3 | 1 | |
| CBCC MED | 377 | | | | | 265 | 70 | 27 | 7 | 41 | 11 | 39 | 10 | | | 2 | 1 | 3 | 1 | |
| CBCC IMU | 56 | 24 | 43 | 26 | 46 | 4 | 7 | | | | | | | | | | | 2 | 4 | |
| WCC REC | 1,275 | 83 | 7 | | | 282 | 22 | 89 | 7 | 99 | 8 | 149 | 12 | 1 | 0 | 45 | 4 | 527 | 41 | |
| MCC-WSR | 734 | 301 | 41 | | | 224 | 31 | 7 | 1 | 31 | 4 | 154 | 21 | | | 5 | 1 | 12 | 2 | |
| MCC-TRU | 823 | | | | | 96 | 12 | 29 | 4 | 43 | 5 | 645 | 78 | | | 5 | 1 | 5 | 1 | |
| MCC-WSR MIN | 391 | 12 | 3 | | | 48 | 12 | 36 | 9 | 169 | 43 | 18 | 5 | | | 43 | 11 | 65 | 17 | |
| MCC-IMU/SEG | 160 | 28 | 18 | 84 | 53 | 18 | 11 | 2 | 1 | 10 | 6 | 13 | 8 | | | 1 | 1 | 4 | 3 | |
| MCC-SOC | 347 | 39 | 11 | 47 | 14 | 83 | 24 | 6 | 2 | 11 | 3 | 158 | 46 | | | 1 | 0 | 2 | 1 | |
| WSP | 1,261 | 574 | 46 | 1 | 0 | 410 | 33 | 32 | 3 | 80 | 6 | 143 | 11 | | | 5 | 0 | 16 | 1 | |
| WSP MED | 309 | | | | | 182 | 59 | 17 | 6 | 46 | 15 | 48 | 16 | | | 2 | 1 | 14 | 5 | |
| WSP MIN | 182 | | | | | | | 36 | 20 | 123 | 68 | | | | | 23 | 13 | | | |
| WSP IMU | 254 | 75 | 30 | 126 | 50 | 26 | 10 | 3 | 1 | 10 | 4 | 9 | 4 | | | 2 | 1 | 3 | 1 | |
| WCC WOMEN | 425 | 73 | 17 | 1 | 0 | 192 | 45 | 14 | 3 | 45 | 11 | 89 | 21 | | | | | 11 | 3 | |
| WCCW WEC | 1 | | | | | | | | | 1 | 100 | | | | | | | | | |
| WCCW MIN | 316 | | | | | 1 | 0 | 67 | 21 | 184 | 58 | 19 | 6 | | | 36 | 11 | 9 | 3 | |
| WCCW-REC | 63 | 2 | 3 | | | 9 | 14 | 4 | 6 | | | 1 | 2 | | | 8 | 13 | 39 | 62 | |
| WCC TRNG | 234 | | | | | 100 | 43 | 1 | 0 | 13 | 6 | 115 | 49 | | | 2 | 1 | 3 | 1 | |
| WCC IMU | 87 | 22 | 25 | 33 | 38 | 15 | 17 | | | 3 | 3 | 4 | 5 | | | | | 10 | 11 | |
| WCC HOS | 7 | 2 | 29 | 1 | 14 | 1 | 14 | | | | | | | | | | | 3 | 43 | |
| MICC | 986 | 1 | 0 | | | 21 | 2 | 17 | 2 | 41 | 4 | 887 | 90 | | | 11 | 1 | 8 | 1 | |
| MICC MIN | 262 | | | | | | | 57 | 22 | 163 | 62 | 2 | 1 | | | 32 | 12 | 8 | 3 | |
| MICC IMU | 33 | | | 18 | 55 | 1 | 3 | | | 1 | 3 | 7 | 21 | | | | | 6 | 18 | |
| ECHO GLEN CTR | 4 | | | | | | | | | | | | | | | | | 4 | 100 | |
| GREEN HILL SCHL | 42 | | | | | | | | | | | | | | | | | 42 | 100 | |
| OLYMPIC CC | 326 | | | | | | | 84 | 26 | 211 | 65 | | | | | 27 | 8 | 4 | 1 | |
| LARCH CC | 391 | | | | | | | 99 | 25 | 237 | 61 | | | | | 54 | 14 | 1 | 0 | |
| CEDAR CREEK CC | 399 | | | | | | | 97 | 24 | 249 | 62 | | | | | 49 | 12 | 4 | 1 | |
| AIRWAY HTS MED | 1,542 | 10 | 1 | | | 450 | 29 | 88 | 6 | 136 | 9 | 805 | 52 | | | 14 | 1 | 39 | 3 | |
| AIRWAY HTS MIN | 589 | | | | | | | 126 | 21 | 391 | 66 | | | | | 70 | 12 | 2 | 0 | |
| MISSION CREEK CC | 139 | | | | | | | 50 | 36 | 76 | 55 | | | | | 13 | 9 | | | |
| COYOTE RDG CC | 597 | | | | | 1 | 0 | 111 | 19 | 454 | 76 | | | | | 31 | 5 | | | |
| CRCC-WEC | 8 | | | | | | | | | 8 | 100 | | | | | | | | | |
| STAFFORD CRK CC | 1,888 | 4 | 0 | | | 441 | 23 | 61 | 3 | 142 | 8 | 1,183 | 63 | | | 17 | 1 | 40 | 2 | |
| SCCC IMU | 80 | 7 | 9 | 56 | 70 | 8 | 10 | 1 | 1 | | | 8 | 10 | | | | | | | |
| PLCC WOMEN | 319 | | | | | 3 | 1 | 105 | 33 | 178 | 56 | | | | | 20 | 6 | 13 | 4 | |
| AHTANUM VW ALF | 119 | | | | | | | 13 | 11 | 97 | 82 | | | | | 9 | 8 | | | |
| BENTON CO VIOL | 113 | 6 | 5 | | | 26 | 23 | 6 | 5 | 2 | 2 | 11 | 10 | | | 18 | 16 | 44 | 39 | |
| CHELAN CO VIOL | 17 | 1 | 6 | | | 1 | 6 | 1 | 6 | | | 1 | 6 | | | 1 | 6 | 12 | 71 | |
| CLARK CO VIOL | 71 | 7 | 10 | | | 15 | 21 | 4 | 6 | | | 6 | 8 | | | 7 | 10 | 32 | 45 | |
| COWLTZ CO VIOL | 54 | 2 | 4 | | | 14 | 26 | 3 | 6 | | | 4 | 7 | | | 5 | 9 | 26 | 48 | |
| FERRY CO VIOL | 2 | | | | | | | | | | | | | | | 1 | 50 | 1 | 50 | |
| GRANT CO VIOL | 30 | 4 | 13 | | | 9 | 30 | | | 1 | 3 | | | | | 2 | 7 | 14 | 47 | |
| KING CO VIOL | 166 | 7 | 4 | | | 29 | 17 | 14 | 8 | 5 | 3 | 22 | 13 | | | 16 | 10 | 73 | 44 | |
| KITSAP CO VIOL | 41 | | | | | 13 | 32 | 2 | 5 | | | 1 | 2 | | | 7 | 17 | 18 | 44 | |
| LEWIS CO VIOL | 58 | 5 | 9 | | | 8 | 14 | 2 | 3 | 1 | 2 | 8 | 14 | | | 6 | 10 | 28 | 48 | |
| PIERCE CO VIOL | 17 | 1 | 6 | | | 1 | 6 | | | 1 | 6 | 1 | 6 | | | 2 | 12 | 11 | 65 | |
| SNOHOMISH CO VIOL | 90 | 8 | 9 | | | 22 | 24 | 7 | 8 | 2 | 2 | 9 | 10 | | | 11 | 12 | 31 | 34 | |
| SPOKANE CO VIOL | 9 | 2 | 22 | | | 4 | 44 | | | | | 1 | 11 | | | | | 2 | 22 | |
| WALLA WALLA VIOL | 7 | | | | | 1 | 14 | | | | | | | | | 3 | 43 | 3 | 43 | |
| YAKIMA CO VIOL | 138 | 12 | 9 | | | 38 | 28 | 8 | 6 | 1 | 1 | 16 | 12 | | | 20 | 14 | 43 | 31 | |
| ENUMCLAW JAIL | 3 | 1 | 33 | | | | | | | | | | | | | | | 2 | 67 | |
| GEIGER CORR CTR | 19 | | | | | 3 | 16 | | | | | 2 | 11 | | | 2 | 11 | 12 | 63 | |
| NISQUALLY VIOL | 22 | | | | | 6 | 27 | | | | | 2 | 9 | | | 4 | 18 | 10 | 45 | |

**TABLE 5B
CURRENT CLASSIFICATION BY MOST RECENT OVERRIDE REASON
EXCLUDING MINIMUM CUSTODY SCORES WITH MINIMUM PLACEMENT
AS OF JUNE 30, 2008**

| MOST RECENT REVIEW OVERRIDES | | TOTAL | ASSIGNED CUSTODY | | | | | | | | | | | | | |
|------------------------------|---------------|-------|------------------|------|-----|------|-----|------|----|------|-----|------|----|------|---|-----|
| | | | CLO | | | MAX | | MED | | MI1 | | MI2 | | MI3 | | MIP |
| | | N | N | % | N | % | N | % | N | % | N | % | N | % | N | % |
| TOTAL | | 2,111 | 645 | 30.6 | 394 | 18.7 | 803 | 38 | 47 | 2.2 | 124 | 5.9 | 90 | 4.3 | 8 | 0.4 |
| | SCORED | | | | | | | | | | | | | | | |
| AD SEG/IMU | CLO | 7 | | | | | 7 | 100 | | | | | | | | |
| | MED | 74 | 72 | 97.3 | | | | | | | | | 2 | 2.7 | | |
| | MIN | 26 | 16 | 61.5 | | | 10 | 38.5 | | | | | | | | |
| BOARDER | MED | 1 | 1 | 100 | | | | | | | | | | | | |
| COMMCORR TRANSIT | MED | 3 | | | | | | | 3 | 100 | | | | | | |
| CIN | MIN | 4 | | | | | 4 | 100 | | | | | | | | |
| DEATH ROW | MED | 3 | 3 | 100 | | | | | | | | | | | | |
| | MIN | 5 | 5 | 100 | | | | | | | | | | | | |
| DETAINER | CLO | 3 | | | | | 3 | 100 | | | | | | | | |
| | MED | 16 | | | | | | | | | 5 | 31.3 | 11 | 68.8 | | |
| | MIN | 9 | | | | | 9 | 100 | | | | | | | | |
| GRANDFATHERED | CLO | 3 | | | | | 3 | 100 | | | | | | | | |
| | MED | 4 | | | | | | | | | 4 | 100 | | | | |
| HCSC - COMMUN RISK | MED | 1 | | | | | | | | | | | | | 1 | 100 |
| | MIN | 2 | | | | | 2 | 100 | | | | | | | | |
| HCSC - MENTAL HLTH | MIN | 6 | | | | | 6 | 100 | | | | | | | | |
| IMS | CLO | 246 | | | 246 | 100 | | | | | | | | | | |
| | MED | 112 | | | 112 | 100 | | | | | | | | | | |
| | MIN | 36 | | | 36 | 100 | | | | | | | | | | |
| INDETERM SENTENCE | MIN | 5 | 1 | 20 | | | 4 | 80 | | | | | | | | |
| INSTIT SECURITY | MED | 42 | 38 | 90.5 | | | | | | | 1 | 2.4 | 3 | 7.1 | | |
| | MIN | 37 | 2 | 5.4 | | | 35 | 94.6 | | | | | | | | |
| LIFE W/O PAROLE | MED | 34 | 34 | 100 | | | | | | | | | | | | |
| | MIN | 339 | 84 | 24.8 | | | 255 | 75.2 | | | | | | | | |
| MEDICAL | CLO | 1 | | | | | 1 | 100 | | | | | | | | |
| | MED | 7 | | | | | | | | | 1 | 14.3 | 6 | 85.7 | | |
| | MIN | 18 | 1 | 5.6 | | | 17 | 94.4 | | | | | | | | |
| MLC | MED | 2 | | | | | | | 1 | 50 | 1 | 50 | | | | |
| | MIN | 7 | | | | | 7 | 100 | | | | | | | | |
| MURDER | MED | 30 | 29 | 96.7 | | | | | | | | | 1 | 3.3 | | |
| | MIN | 214 | 96 | 44.9 | | | 118 | 55.1 | | | | | | | | |
| PRIOR HQ DECISION | CLO | 5 | | | | | 5 | 100 | | | | | | | | |
| | MED | 169 | 84 | 49.7 | | | | | 24 | 14.2 | 38 | 22.5 | 20 | 11.8 | 3 | 1.8 |
| | MIN | 316 | 103 | 32.6 | | | 213 | 67.4 | | | | | | | | |
| POLICY | CLO | 6 | | | | | 6 | 100 | | | | | | | | |
| | MED | 43 | | | | | | | 6 | 14 | 21 | 48.8 | 14 | 32.6 | 2 | 4.7 |
| | MIN | 3 | 1 | 33.3 | | | 2 | 66.7 | | | | | | | | |
| PENDING PSYCH EVAL | MIN | 1 | 1 | 100 | | | | | | | | | | | | |
| PRE/WR TERMINATION | MED | 14 | | | | | | | 4 | 28.6 | 1 | 7.1 | 9 | 64.3 | | |
| | MIN | 2 | | | | | 2 | 100 | | | | | | | | |
| RSK MGMT 1 | CLO | 19 | | | | | 19 | 100 | | | | | | | | |
| | MED | 74 | | | | | | | 8 | 10.8 | 46 | 62.2 | 18 | 24.3 | 2 | 2.7 |
| RSK MGMT 2 | CLO | 5 | | | | | 4 | 80 | | | 1 | 20 | | | | |
| | MED | 4 | | | | | | | 1 | 25 | 2 | 50 | 1 | 25 | | |
| REFUSES PLACEMENT | MED | 1 | | | | | | | | | 1 | 100 | | | | |
| | MIN | 3 | 1 | 33.3 | | | 2 | 66.7 | | | | | | | | |
| SEP | MED | 3 | | | | | | | | | | | 3 | 100 | | |
| SPECIAL NEEDS | CLO | 1 | | | | | 1 | 100 | | | | | | | | |
| | MED | 12 | 12 | 100 | | | | | | | | | | | | |
| | MIN | 35 | 33 | 94.3 | | | 2 | 5.7 | | | | | | | | |
| SPECIAL OFF PRGM | MED | 2 | | | | | | | | | | | 2 | 100 | | |
| TIME TO SERVE | MED | 9 | 9 | 100 | | | | | | | | | | | | |
| | MIN | 85 | 19 | 22.4 | | | 66 | 77.6 | | | | | | | | |
| WEC | MED | 2 | | | | | | | | | 2 | 100 | | | | |

TABLE 5C
CURRENT CUSTODY CLASSIFICATION BY MOST RECENT PLACEMENT REASON
FOR NON-STANDARD MINIMUM ASSIGNMENTS
AS OF JUNE 30, 2008

| PLACEMENT REASON | TOTAL | ASSIGNED CUSTODY | | | | | | | |
|---------------------------|-------|------------------|------|-----|------|-------|------|-----|-----|
| | N | MI1 | | MI2 | | MI3 | | MIP | |
| | | N | % | N | % | N | % | N | % |
| TOTAL | 3,058 | 13 | 0.4 | 397 | 13 | 2,628 | 85.9 | 20 | 0.7 |
| AD SEG/IMU | 9 | . | . | . | . | 9 | 100 | . | . |
| CCI VIOLATOR | 2 | 1 | 50 | 1 | 50 | . | . | . | . |
| CIN | 24 | . | . | . | . | 23 | 95.8 | 1 | 4.2 |
| DENTAL | 11 | . | . | . | . | 11 | 100 | . | . |
| DETAINDER | 231 | . | . | 35 | 15.2 | 192 | 83.1 | 4 | 1.7 |
| ESR | 13 | . | . | 8 | 61.5 | 5 | 38.5 | . | . |
| GRANDFATHERED | 83 | . | . | 77 | 92.8 | 1 | 1.2 | 5 | 6 |
| HCSC - COMMUN RISK | 142 | 1 | 0.7 | 21 | 14.8 | 120 | 84.5 | . | . |
| HCSC - MENTAL HLTH | 25 | . | . | . | . | 25 | 100 | . | . |
| HPD | 2 | . | . | . | . | 2 | 100 | . | . |
| INDETERM SENTENCE | 393 | . | . | 3 | 0.8 | 390 | 99.2 | . | . |
| RC INFRACTN | 1 | . | . | . | . | 1 | 100 | . | . |
| INSTIT SECURITY | 121 | . | . | 2 | 1.7 | 119 | 98.3 | . | . |
| LONG TERM MINIMUM | 24 | . | . | 24 | 100 | . | . | . | . |
| LIFE W/O PAROLE | 2 | . | . | . | . | 2 | 100 | . | . |
| MAP | 7 | 2 | 28.6 | 5 | 71.4 | . | . | . | . |
| MEDICAL | 628 | 1 | 0.2 | 10 | 1.6 | 612 | 97.5 | 5 | 0.8 |
| MENTAL HEALTH | 16 | . | . | . | . | 16 | 100 | . | . |
| MLC | 9 | 2 | 22.2 | 4 | 44.4 | 3 | 33.3 | . | . |
| MRP | 14 | 3 | 21.4 | 10 | 71.4 | 1 | 7.1 | . | . |
| MURDER | 301 | . | . | . | . | 301 | 100 | . | . |
| PRIOR HQ DECISION | 411 | 2 | 0.5 | 69 | 16.8 | 340 | 82.7 | . | . |
| POLICY | 78 | . | . | 35 | 44.9 | 41 | 52.6 | 2 | 2.6 |
| PENDING PSYCH EVAL | 11 | . | . | . | . | 11 | 100 | . | . |
| PRE/WR TERMINATION | 30 | 1 | 3.3 | 17 | 56.7 | 12 | 40 | . | . |
| RSK MGMT 1 | 5 | . | . | 5 | 100 | . | . | . | . |
| REFUSES PLACEMENT | 78 | . | . | 69 | 88.5 | 6 | 7.7 | 3 | 3.8 |
| SEP | 1 | . | . | . | . | 1 | 100 | . | . |
| SPECIAL NEEDS | 24 | . | . | . | . | 24 | 100 | . | . |
| SPECIAL OFF PRGM | 239 | . | . | . | . | 239 | 100 | . | . |
| SEXUALLY VIOL PRED | 13 | . | . | . | . | 13 | 100 | . | . |
| TIME TO SERVE | 108 | . | . | . | . | 108 | 100 | . | . |
| WEC | 2 | . | . | 2 | 100 | . | . | . | . |

**TABLE 5D
CURRENT CUSTODY CLASSIFICATION BY POPULATION ASSIGNMENT AND SEX
AS OF JUNE 30 2008**

| MALE-HOUSING | TOTAL | ASSIGNED CUSTODY | | | | | | | | | | | | | | | | | |
|--------------------|--------|------------------|----|---------|----|--------|----|-------|----|-------|----|-------|-----|---------|---|-----|----|---------|----|
| | | CLOSE | | MAXIMUM | | MEDIUM | | MI1 | | MI2 | | MI3 | | MINIMUM | | MIP | | UNCLASS | |
| | | N | % | N | % | N | % | N | % | N | % | N | % | N | % | N | % | N | % |
| TOTAL | 14,642 | 1,492 | 10 | 392 | 3 | 2,739 | 19 | 1,516 | 10 | 2,819 | 19 | 4,408 | 30 | 1 | 0 | 452 | 3 | 823 | 6 |
| CL | 4 | . | . | . | . | . | . | . | . | . | . | 4 | 100 | . | . | . | . | . | . |
| CCI VIOLATOR | 191 | 12 | 6 | . | . | 48 | 25 | 12 | 6 | 8 | 4 | 18 | 9 | . | . | 28 | 15 | 65 | 34 |
| FAM. VISITS | 2 | . | . | . | . | 1 | 50 | . | . | 1 | 50 | . | . | . | . | . | . | . | . |
| GEN. POPULATION | 11,253 | 993 | 9 | . | . | 2,129 | 19 | 1,350 | 12 | 2,549 | 23 | 3,685 | 33 | . | . | 355 | 3 | 192 | 2 |
| INTENS. MGNT | 579 | 118 | 20 | 345 | 60 | 51 | 9 | 4 | 1 | 13 | 2 | 29 | 5 | . | . | 2 | 0 | 17 | 3 |
| INFIRMARY | 42 | 8 | 19 | 1 | 2 | 7 | 17 | 1 | 2 | 7 | 17 | 12 | 29 | . | . | 1 | 2 | 5 | 12 |
| M5 | 11 | 4 | 36 | 2 | 18 | 5 | 45 | . | . | . | . | . | . | . | . | . | . | . | . |
| MEN. HEALTH | 389 | 31 | 8 | 1 | 0 | 96 | 25 | 29 | 7 | 14 | 4 | 213 | 55 | . | . | 2 | 1 | 3 | 1 |
| RECEPT. CLASSIFIED | 643 | 49 | 8 | . | . | 185 | 29 | 57 | 9 | 66 | 10 | 84 | 13 | . | . | 11 | 2 | 191 | 30 |
| RECEPT/ORIENTATN | 628 | 34 | 5 | . | . | 96 | 15 | 31 | 5 | 33 | 5 | 65 | 10 | 1 | 0 | 34 | 5 | 334 | 53 |
| ADMIN SEGREGATION | 399 | 128 | 32 | 43 | 11 | 82 | 21 | 8 | 2 | 45 | 11 | 69 | 17 | . | . | 8 | 2 | 16 | 4 |
| SPECIAL NEEDS | 501 | 115 | 23 | . | . | 39 | 8 | 24 | 5 | 83 | 17 | 229 | 46 | . | . | 11 | 2 | . | . |

| FEMALE-HOUSING | TOTAL | ASSIGNED CUSTODY | | | | | | | | | | | | | | | | | |
|-------------------|-------|------------------|----|---------|---|--------|----|-----|-----|-----|----|-----|---|-----|----|---------|----|---|---|
| | | CLOSE | | MAXIMUM | | MEDIUM | | MI1 | | MI2 | | MI3 | | MIP | | UNCLASS | | | |
| | | N | % | N | % | N | % | N | % | N | % | N | % | N | % | N | % | | |
| TOTAL | 1,345 | 75 | 6 | 1 | 0 | 204 | 15 | 319 | 24 | 484 | 36 | 109 | 8 | 78 | 6 | 75 | 6 | | |
| CHILD NURTURING | 3 | . | . | . | . | . | . | 3 | 100 | . | . | . | . | . | . | . | . | . | . |
| GEN. POPULATION | 1,225 | 59 | 5 | . | . | 180 | 15 | 304 | 25 | 473 | 39 | 106 | 9 | 70 | 6 | 33 | 3 | | |
| MEN. HEALTH | 4 | . | . | . | . | . | . | 4 | 100 | . | . | . | . | . | . | . | . | . | . |
| RECEPT/ORIENTATN | 62 | 2 | 3 | . | . | 9 | 15 | 4 | 6 | . | . | 1 | 2 | 8 | 13 | 38 | 61 | | |
| ADMIN SEGREGATION | 15 | 6 | 40 | 1 | 7 | 1 | 7 | . | . | 4 | 27 | . | . | . | . | 3 | 20 | | |
| SPECIAL NEEDS | 36 | 8 | 22 | . | . | 14 | 39 | 4 | 11 | 7 | 19 | 2 | 6 | . | . | 1 | 3 | | |

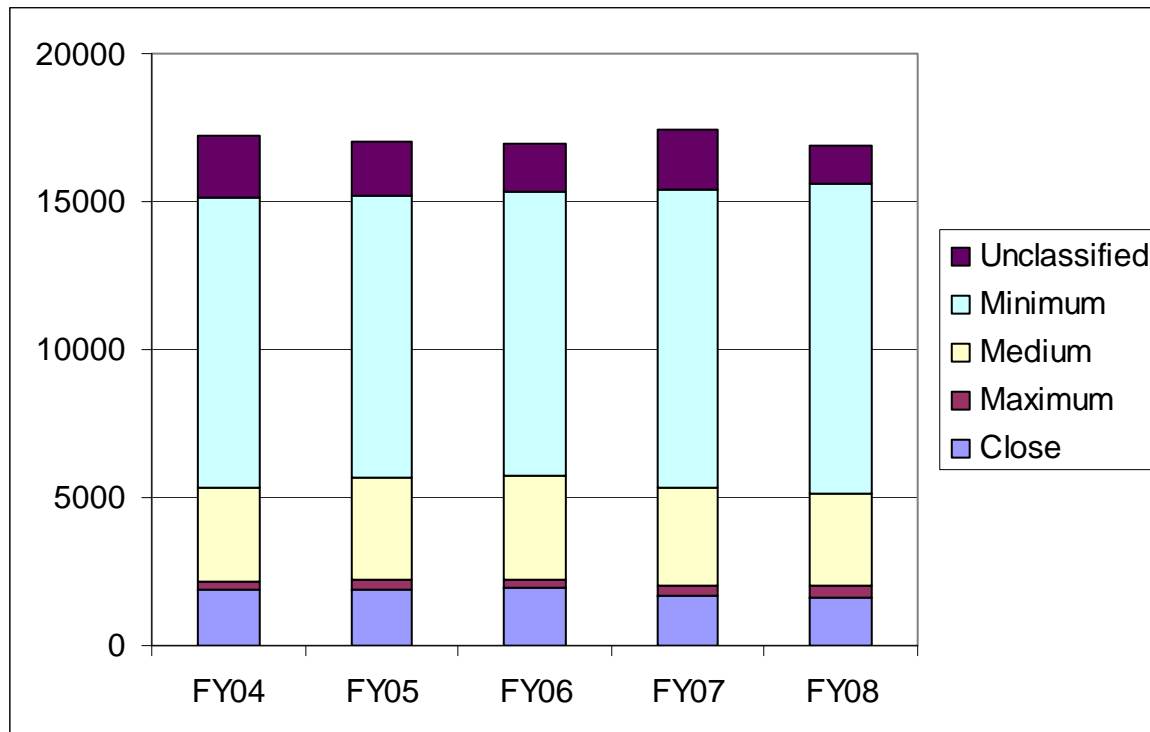
Offenders housed in Work Releases or Violator Facilities do not have housing assignments.

TABLE 5G
RISK MANAGEMENT DISTRIBUTION OF ALL INMATES
CUSTODY CLASSIFICATION BY RISK MANAGEMENT TYPE
AS OF JUNE 30, 2008

| CLASSIFICATION | TOTAL | RMI | | | | | | | | | |
|----------------|--------|-------|----|-------|----|-------|----|-----|---|------|----|
| | | RMA | | RMB | | RMC | | RMD | | UNCL | |
| | | N | % | N | % | N | % | N | % | N | % |
| TOTAL | 17,456 | 8,931 | 51 | 4,667 | 27 | 2,635 | 15 | 776 | 4 | 447 | 3 |
| CLO | 2,532 | 1,369 | 54 | 536 | 21 | 228 | 9 | 144 | 6 | 255 | 10 |
| MAX | 413 | 299 | 72 | 77 | 19 | 16 | 4 | 2 | 0 | 19 | 5 |
| MED | 3,071 | 1,663 | 54 | 818 | 27 | 382 | 12 | 118 | 4 | 90 | 3 |
| MI1 | 2,053 | 708 | 34 | 632 | 31 | 622 | 30 | 91 | 4 | . | . |
| MI2 | 3,389 | 1,420 | 42 | 940 | 28 | 830 | 24 | 183 | 5 | 16 | 0 |
| MI3 | 4,643 | 2,867 | 62 | 1,174 | 25 | 401 | 9 | 159 | 3 | 42 | 1 |
| MIN | 584 | 312 | 53 | 225 | 39 | 10 | 2 | 21 | 4 | 16 | 3 |
| MIP | 481 | 161 | 33 | 141 | 29 | 144 | 30 | 34 | 7 | 1 | 0 |
| UNC | 290 | 132 | 46 | 124 | 43 | 2 | 1 | 24 | 8 | 8 | 3 |

CHART 5-1: ASSIGNED CUSTODY DISTRIBUTION OVER LAST FIVE FISCAL YEARS

∇ The unclassified custody classification is due to the Offender Accountability Act and the housing of community custody violators.



**CHART 5-2:
PERCENTAGE OF ASSIGNED CUSTODY BY SEX OVER LAST FIVE FISCAL YEARS**

▽ Females continue to have assignments to lower custody levels.

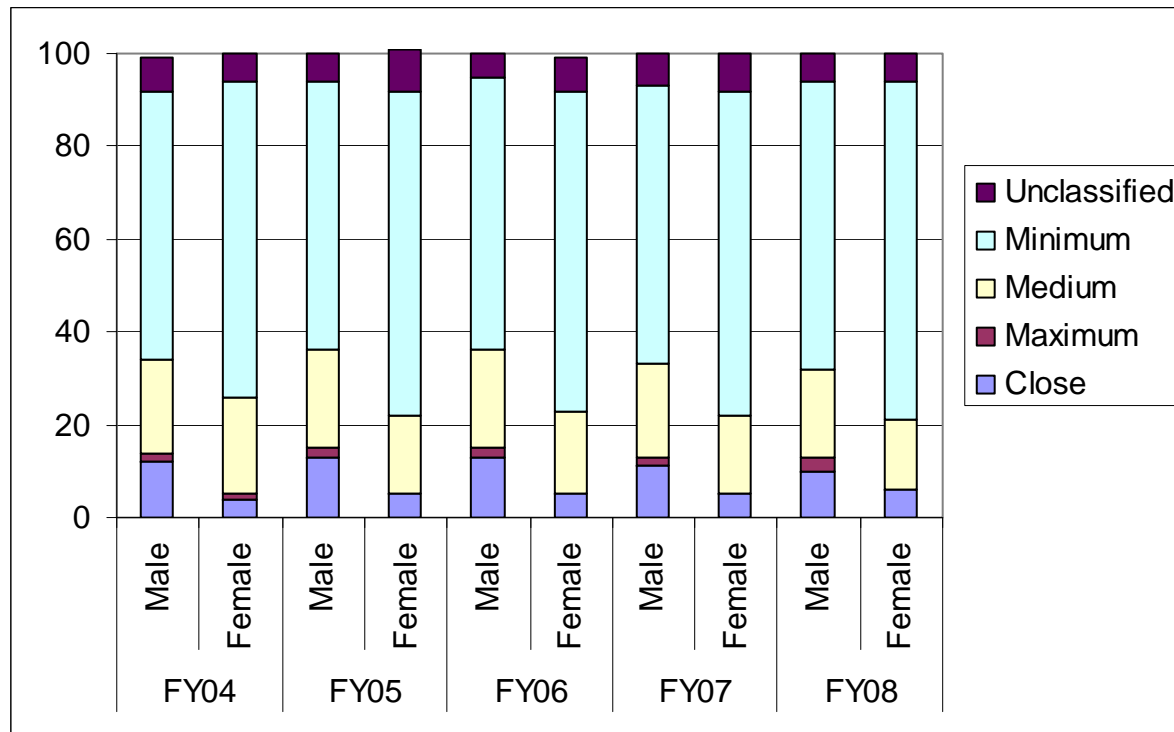


CHART 5-3: DISTRIBUTION OF INITIAL ASSIGNED CUSTODY OVER LAST FIVE FISCAL YEARS

- ∇ The percentage of offenders assigned to higher custody levels (maximum and close) has dropped over the last year.

