

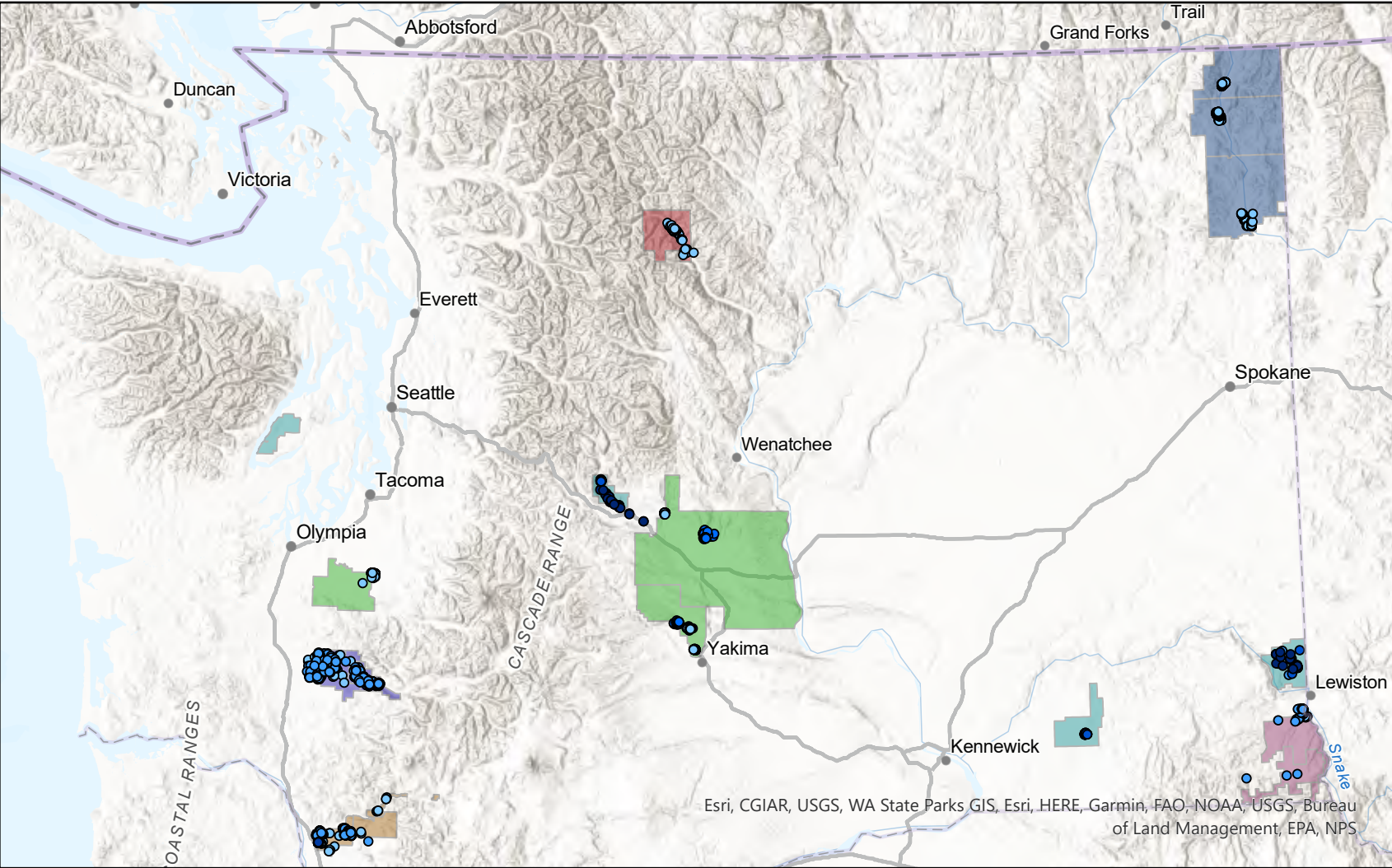
# SUSF Criterion Two Supported Broadband Locations

## Companies

- Asotin Telephone Company
- Consolidated Communications of WA Co., LLC
- Inland Telephone Company
- Lewis River Telephone Company, Inc.
- McDaniel Telephone Company
- Pend Oreille Telephone Company
- Westgate Communications LLC

## Broadband Speed

- 100/50 Mbps
- 100/25 Mbps
- 50/10 Mbps
- 50/5 Mbps
- 25/5 Mbps
- 25/3 Mbps
- 10/1 Mbps

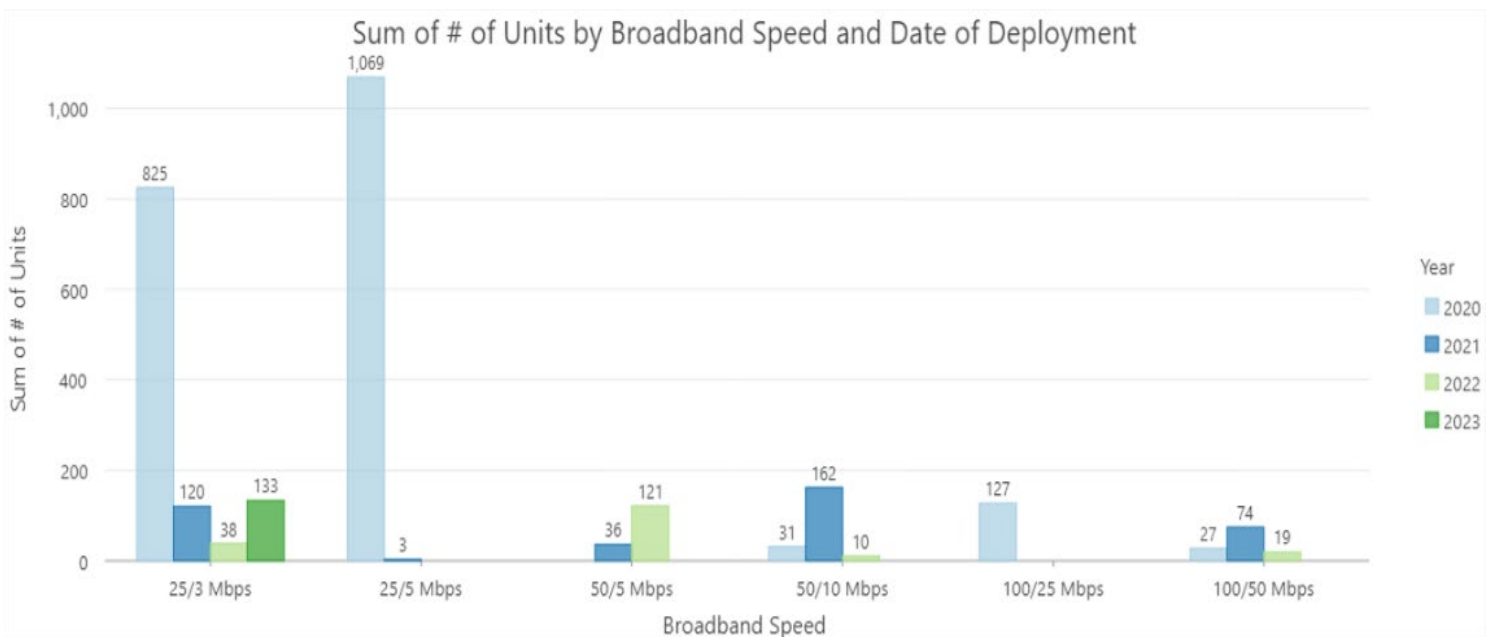
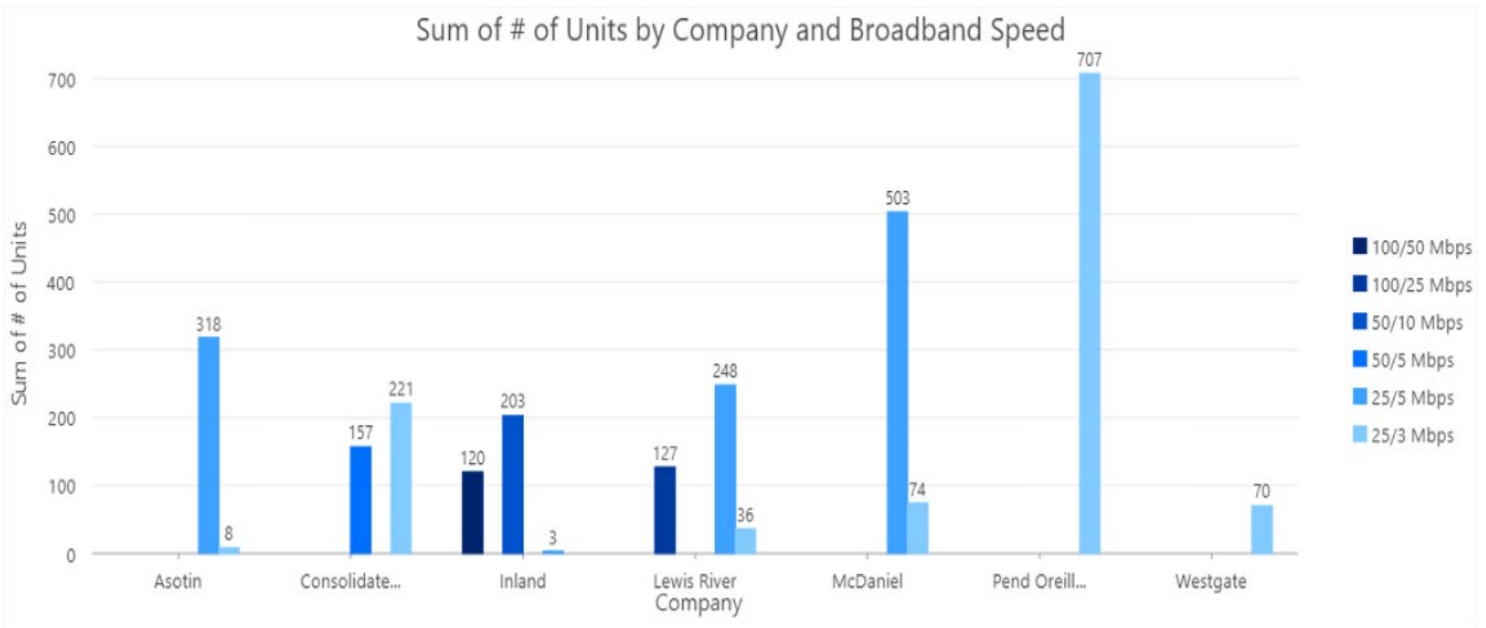


Esri, CGIAR, USGS, WA State Parks GIS, Esri, HERE, Garmin, FAO, NOAA, USGS, Bureau of Land Management, EPA, NPS

Seven companies previously petitioned the UTC for support under eligibility criterion two. Each company made a commitment to deploy 25/3 Mbps (or faster) broadband consistent with the UTC Broadband Buildout requirement by June 30, 2024.

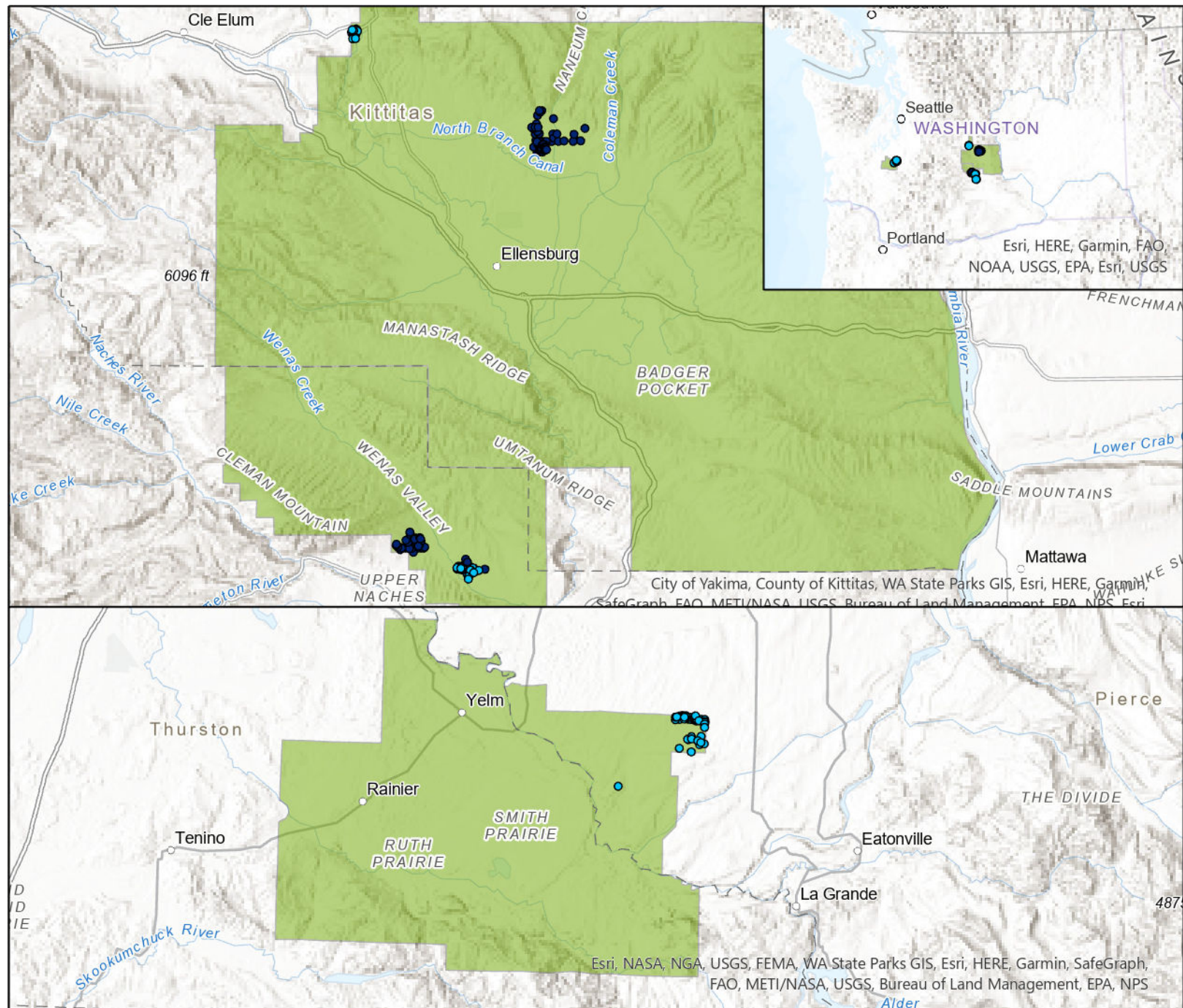
Six companies (Asotin, Inland, Lewis River, McDaniel, Pend Oreille, and Westgate) met its UTC Broadband Buildout requirement.

Consolidated deployed to 378 of its 398 UTC Broadband Buildout requirement.



Note: Companies continue to deploy broadband to additional locations, however, companies only report locations initially used to meet their UTC Broadband Buildout obligation. Staff verified that locations are not reported to the FCC’s portal to meet a company’s federal high-cost broadband buildout obligation.

# Consolidated's SUSF Supported Broadband Locations



**SUSF Buildout Locations FY21-23**

**Broadband\_Speed**

- 50/5 Mbps
- 25/3 Mbps

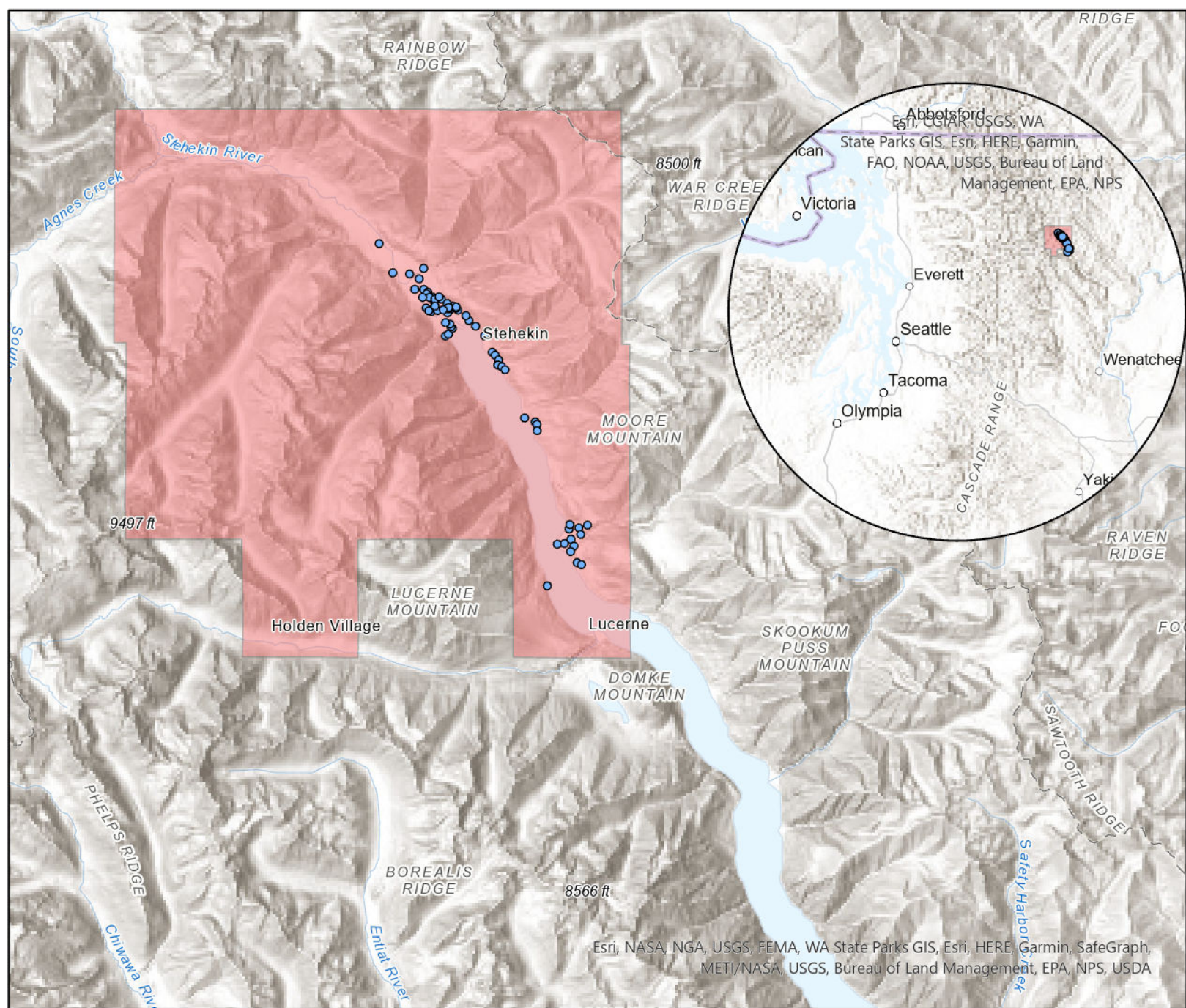
**Criterion II Study Areas**

Consolidated  
 Communications  
 of WA Co., LLC

Consolidated has a SUSF UTC Broadband Buildout obligation of 398 locations by June 30, 2024. Consolidated has provided coordinates for 378 location to which it has deployed 25/3 Mbps (or faster) broadband during the 2022 and 2023 fiscal years.

This consists of 157 locations with 50/5 Mbps capability and 221 locations with 25/3 Mbps broadband capability.

# Westgate's SUSF Supported Broadband Locations



## SUSF Buildout Locations FY23

### Broadband\_Speed

- 25/3 Mbps

### Criterion II Study Areas

- Westgate
- Communications LLC

Westgate has a SUSF UTC Broadband Buildout obligation of 70 locations by June 30, 2024. Westgate has provided coordinates for 70 location to which it has deployed 25/3 Mbps (or faster) broadband capability during the 2023 fiscal year.

# SUSF Criterion Two Supported Broadband Locations



## SUSF Locations

### SUSF Locations - Broadband Speed

- 100/25 Mbps
- 100/50 Mbps
- 50/10 Mbps
- 50/5 Mbps
- 25/5 Mbps
- 25/3 Mbps

## Criterion II Study Areas

### Companies

- Asotin Telephone Company
- Consolidated Communications of WA Co., LLC
- Inland Telephone Company
- Kalama Telephone Company
- Lewis River Telephone Company, Inc.
- McDaniel Telephone Company
- Pend Oreille Telephone Company
- Westgate Communications LLC

Eight Companies previously petitioned the UTC for Support under eligibility criterion two. Each company has committed to deploying 25/3 Mbps (or faster) broadband consistent with UTC Broadband Buildout requirement by June 30, 2024.

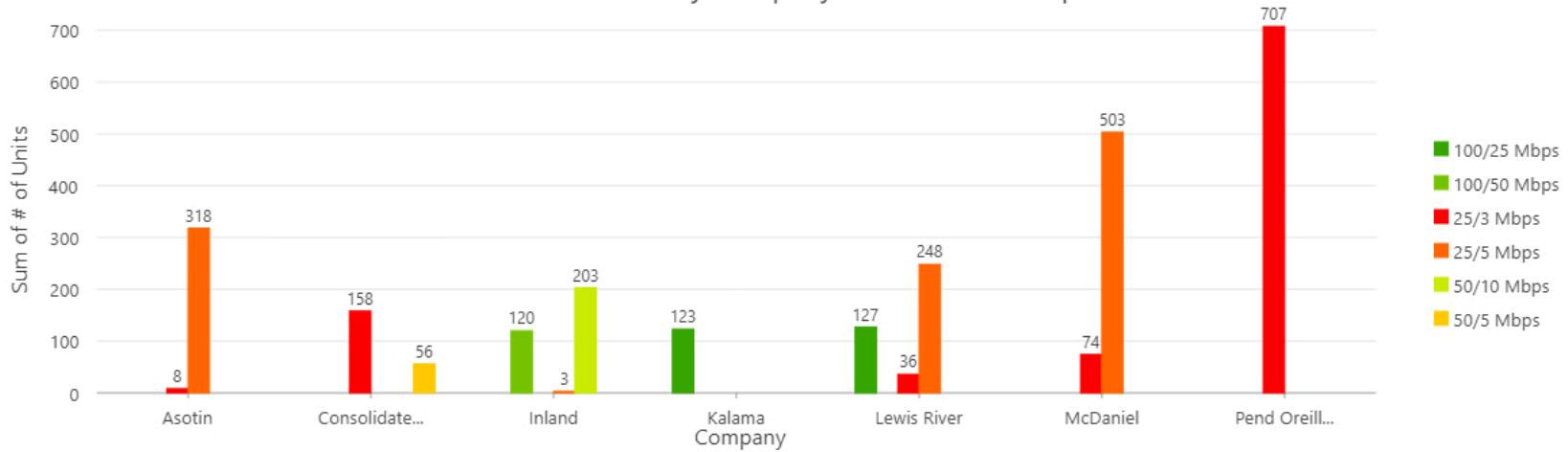
Six companies (Inland, Asotin, Lewis River, McDaniel, Kalama, and Pend Oreille) have met its UTC Broadband Buildout requirement.

Consolidated deployed to 214 of its 398 UTC Broadband Buildout requirement.

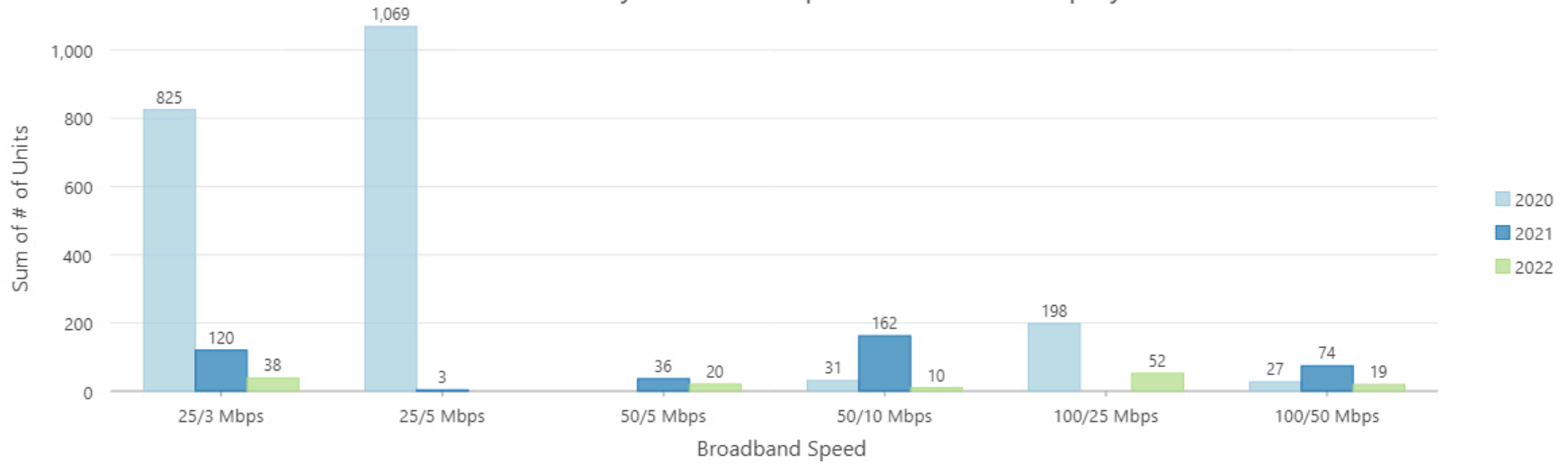
Westgate deployed to 0 of its 70 UTC Broadband Buildout requirement. The company's new KU satellite will provide sufficient backhaul to offer 25/3 Mbps broadband service.

# SUSF Supported Broadband Location

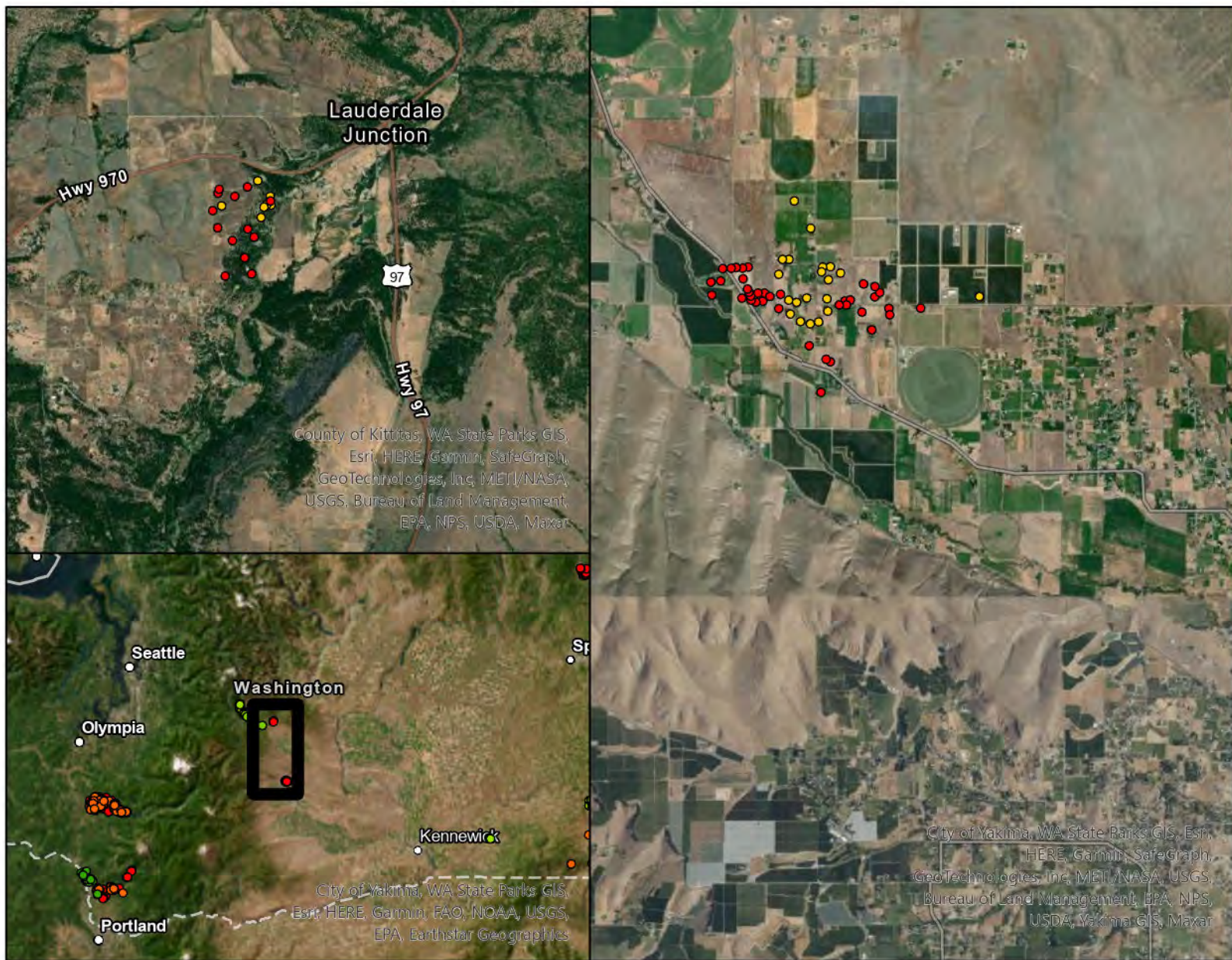
## Sum of # of Units by Company and Broadband Speed



## Sum of # of Units by Broadband Speed and Date of Deployment



# Consolidated's SUSF Supported Broadband Locations



## SUSF Locations

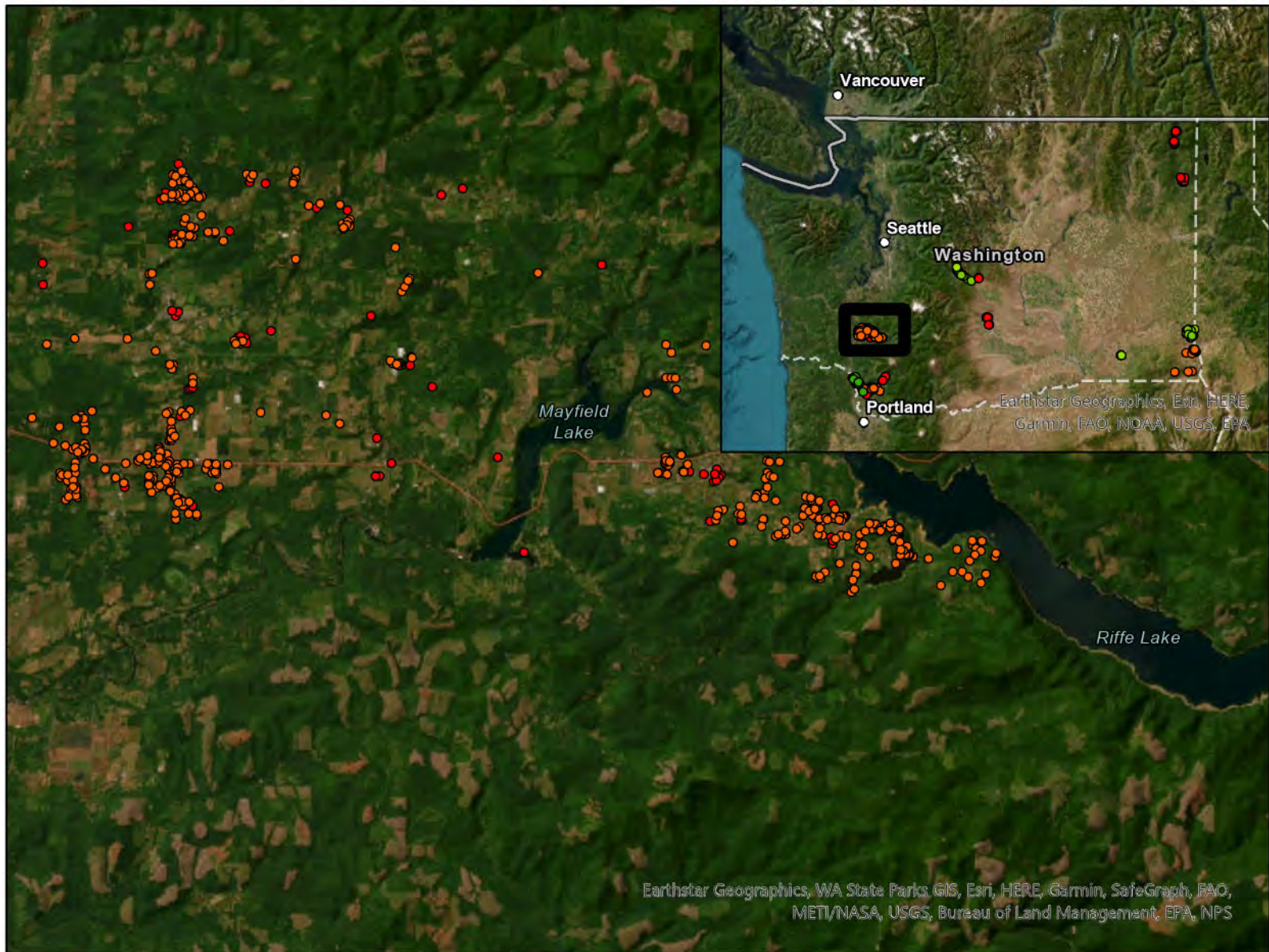
## SUSF Locations - Broadband Speed

- 100/25 Mbps
- 100/50 Mbps

- 50/10 Mbps
- 50/5 Mbps
- 25/5 Mbps
- 25/3 Mbps

Consolidated has a SUSF UTC Broadband Buildout requirement of 398 locations by June 30, 2024. Consolidated has provided coordinates for 214 locations to which it has deployed 25/3 Mbps (or faster) broadband to during the 2022 fiscal year. This consist of 158 locations with 25/3 Mbps capability and 56 locations with 50/5 Mbps broadband capability.

# McDaniel's SUSF Supported Broadband Locations



## SUSF Locations - Broadband Speed

- 100/25 Mbps
- 100/50 Mbps
- 50/10 Mbps
- 50/5 Mbps
- 25/5 Mbps
- 25/3 Mbps

McDaniel has a SUSF UTC Broadband Buildout requirement of 350 locations by June 30, 2024. McDaniel has provided coordinates for 577 locations to which it has deployed 25/3 Mbps (or faster) broadband to during the 2021 fiscal year. This consist of 74 locations with 25/3 Mbps capability and 503 locations with 25/5 Mbps capability.



# Pend Oreille's SUSF Supported Broadband Locations



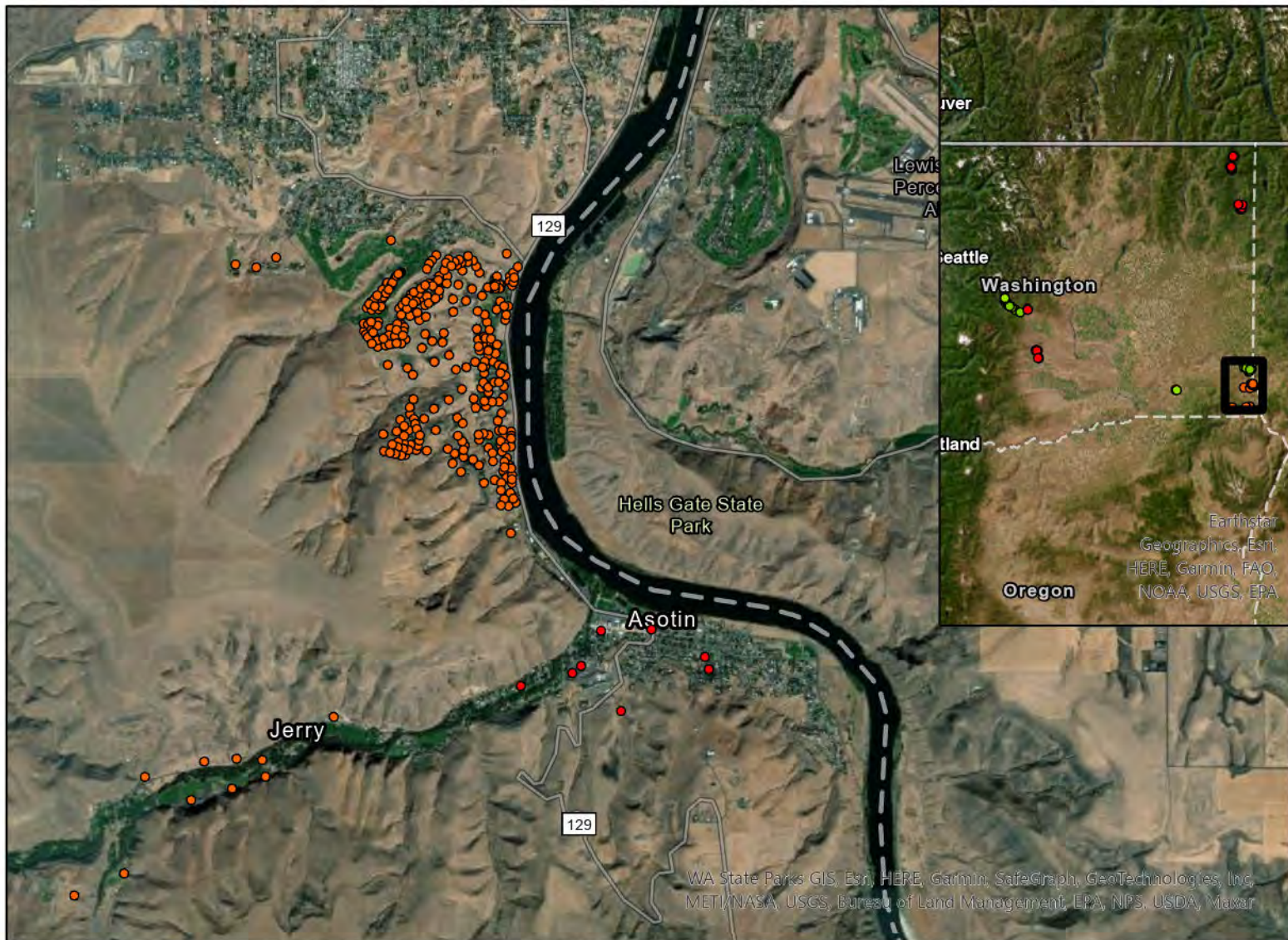
## SUSF Locations

### SUSF Locations - Broadband Speed

- 100/25 Mbps
- 100/50 Mbps
- 50/10 Mbps
- 50/5 Mbps
- 25/5 Mbps
- 25/3 Mbps

Pend Oreille has a SUSF UTC Broadband Buildout requirement of 228 locations by June 30, 2024. Pend Oreille has provided coordinates for 707 locations to which it has deployed 25/3 Mbps (or faster) broadband during the 2020-2022 fiscal years. This consist of 707 locations with 25/3 Mbps capability.

# Asotin's SUSF Supported Broadband Locations



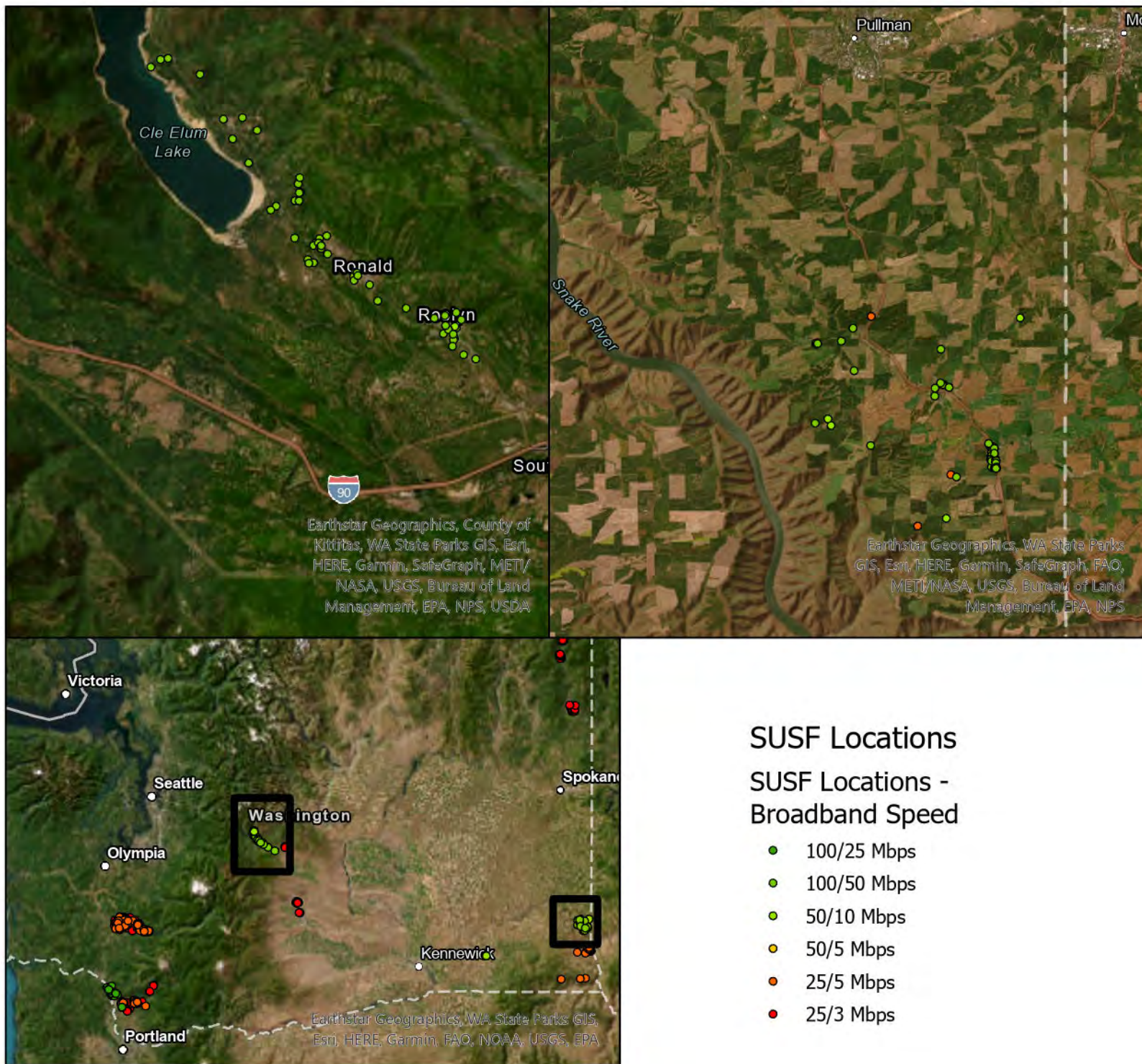
## SUSF Locations

### SUSF Locations - Broadband Speed

- 100/25 Mbps
- 100/50 Mbps
- 50/10 Mbps
- 50/5 Mbps
- 25/5 Mbps
- 25/3 Mbps

Asotin has a SUSF UTC Broadband Buildout requirement of 26 locations by June 30, 2024. Asotin has provided coordinates for 326 locations to which it has deployed 25/3 Mbps (or faster) broadband to during the 2021 fiscal year. This consist of eight locations with 25/3 Mbps capability and 318 with 25/5 Mbps capability.

# Inland's SUSF Supported Broadband Locations



Inland has a SUSF UTC Broadband Buildout requirement of 254 locations by June 30, 2024. Inland has provided coordinates for 108 locations to which it has deployed 25/3 Mbps (or faster) broadband to during the 2021 fiscal year. This consist of 31 locations with 50/10 Mbps capability and 77 locations with 100/50 Mbps capability.

Inland deployed to an additional 218 locations during the 2022 fiscal year and has met its UTC Broadband Buildout obligation. This consists of of 3 locations with 25/5 Mbps capability, 172 locations with 50/10 Mbps capability, and 43 locations with 100/50 Mbps capability.

# Kalama's SUSF Supported Broadband Locations



## SUSF Locations

### SUSF Locations - Broadband Speed

- 100/25 Mbps
- 100/50 Mbps
- 50/10 Mbps
- 50/5 Mbps
- 25/5 Mbps
- 25/3 Mbps

Kalama has a SUSF UTC Broadband Buildout requirement of 122 locations. Kalama has provided coordinates for 71 locations to which it has deployed broadband to during the 2021 fiscal year. Kalama deployed to 52 locations during the 2022 fiscal year. All locations have 100/25 Mbps capability.

Kalama has met its UTC and high-cost broadband buildout obligation and accordingly filed its petition under eligibility criterion three for the 2023 fiscal year.

# Lewis River's SUSF Supported Broadband Locations

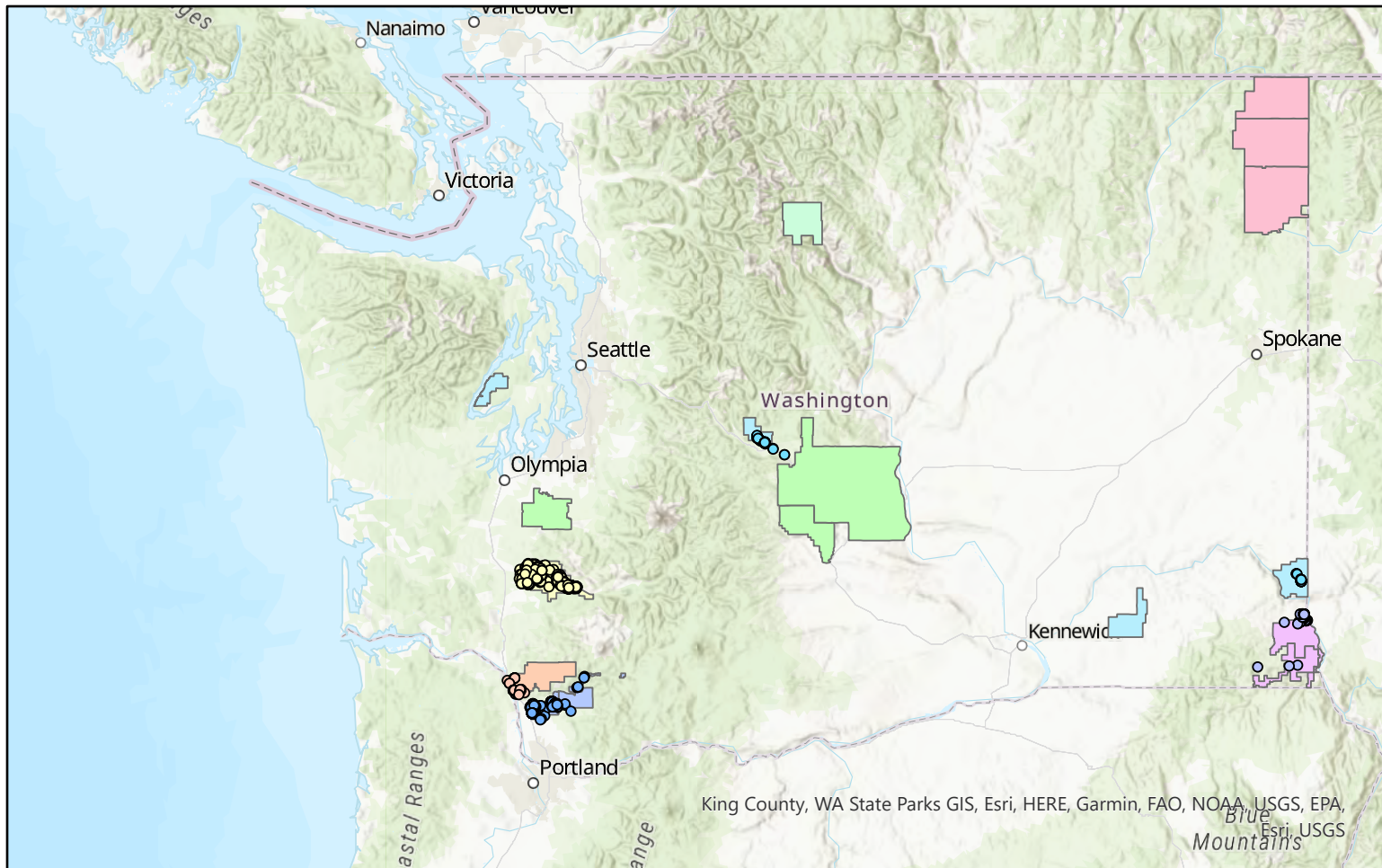


## SUSF Locations - Broadband Speed

- 100/25 Mbps
- 100/50 Mbps
- 50/10 Mbps
- 50/5 Mbps
- 25/5 Mbps
- 25/3 Mbps

Lewis River has a SUSF UTC Broadband Buildout requirement of 264 locations by June 30, 2024. Lewis River has provided coordinates for 411 locations to which it has deployed 25/3 Mbps (or faster) broadband to during the 2021 fiscal year. This consist of 36 locations with 25/3 Mbps capability, 248 with 25/5 Mbps capability, and 127 with 100/25 Mbps capability.

# SUSF Criterion Two Supported Broadband Locations



## Deployed Broadband FY2021

### Company

- Asotin
- Inland
- Kalama
- Lewis River
- McDaniel

## Study Area

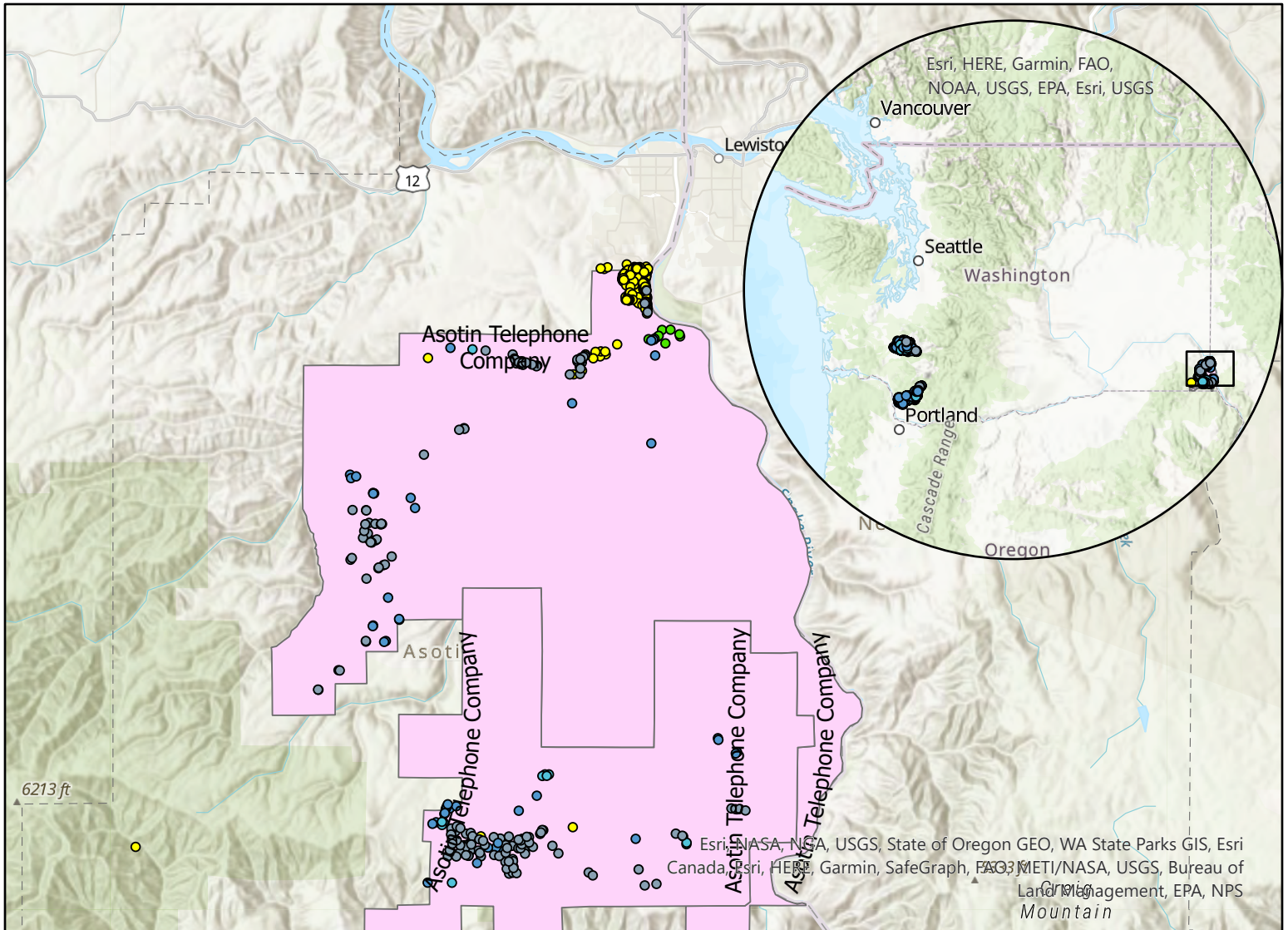
- Asotin Telephone Company
- Consolidated Communications of WA Co., LLC
- Inland Telephone Company
- Kalama Telephone Company
- Lewis River Telephone Company, Inc.
- McDaniel Telephone Company
- Pend Oreille Telephone Company
- Westgate Communications LLC

Eight Companies have petitioned the UTC for Support under eligibility criterion two. Each company has committed to deploying 25/3 Mbps (or faster) broadband speed capability consistent with UTC Broadband Buildout requirement by June 30, 2024.

Three companies (Consolidated, Pend Oreille, and Westgate) do not have locations for the 2021 FY.

- Consolidated expects to deploy broadband to a significant number of its UTC Broadband Buildout requirement during 2022 fiscal year.
- Pend Oreille has deployed 25/3 Mbps to all of the locations as required by the UTC Broadband Buildout requirement. However, they do not have the geolocated information and will provide it by the 2022 fiscal year report.
- Westgate does not have any locations with 25/3 Mbps capability due to satellite backhaul limitations. However, the company will have increased satellite backhaul during the 2022 fiscal year and will deploy 25/3 Mbps to a significant number of its required locations during this time.

# Asotin's SUSF Supported Broadband Locations



**Asotin Deployed FY2021**

**Broadband Speed**

- 25/3 Mbps
- 25/5 Mbps

**Asotin Study Area**

**COMPANY**

- Asotin Telephone Company

**TDS FUSF Locations\***

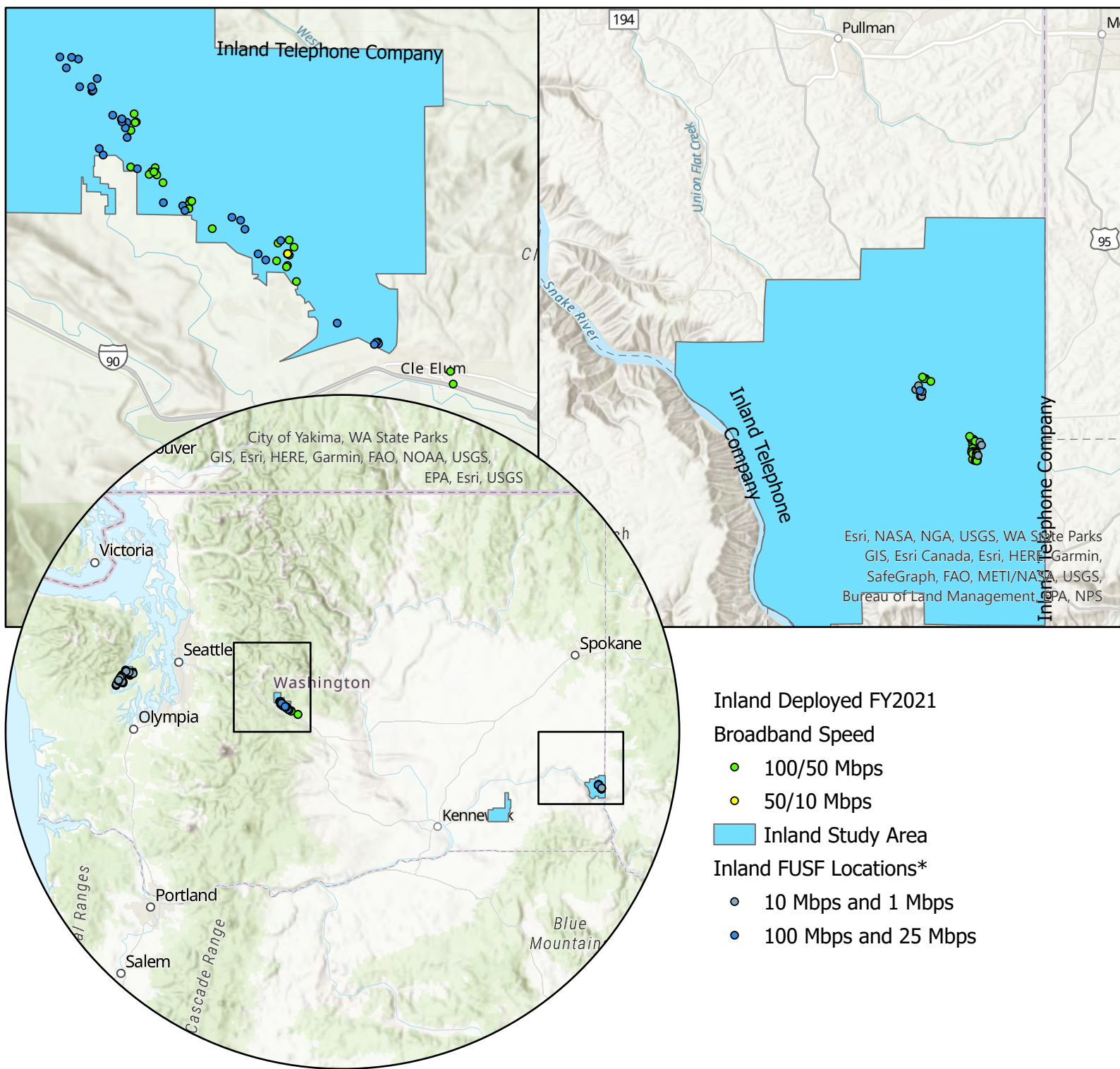
- 10 Mbps and 1 Mbps
- 100 Mbps and 25 Mbps
- 25 Mbps and 3 Mbps
- 25 Mbps and 5 Mbps

Asotin has a SUSF UTC Broadband Buildout requirement of 26 locations by June 30, 2024. Asotin has provided coordinates for 326 locations where it has deployed 25/3 Mbps (or faster) broadband speed capability during the 2021 fiscal year. This consist of eight locations with 25/3 Mbps capability and 318 with 25/5 Mbps capability.

As this is not a grant program, these locations are not explicitly funded with SUSF support, however, SUSF support helps make it possible for these companies to deploy broadband.

\*Federal Universal Service Funds (FUSF) locations are a requirement of receiving federal high-cost support.

# Inland's SUSF Supported Broadband Locations



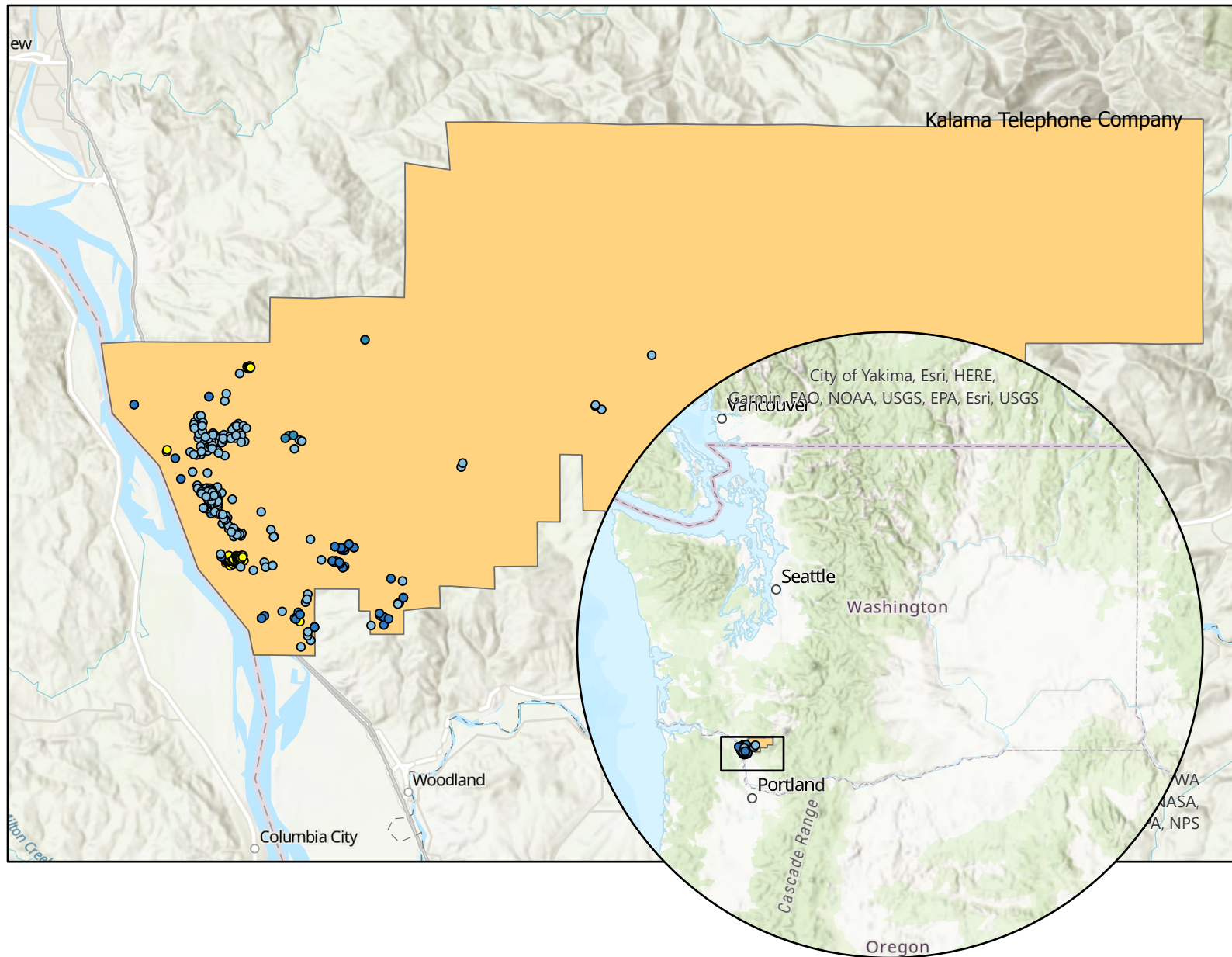
Inland has a SUSF UTC Broadband Buildout requirement of 254 locations by June 30, 2024. Inland has provided coordinates for 108 locations where it has deployed 25/3 Mbps (or faster) broadband speed capability during the 2021 fiscal year. This consists of 31 locations with 50/10 Mbps capability and 77 with 100/50 Mbps capability.

As this is not a grant program, these locations are not explicitly funded with SUSF support, however, SUSF support helps make it possible for these companies to deploy broadband.

\*Federal Universal Service Funds (FUSF) locations are a requirement of receiving federal high-cost support.



# Kalama's SUSF Supported Broadband Locations



Kalama Deployed FY2021

Broadband Speed

● 100/25 Mbps

■ Kalama Study Area

Kalama FUSF Locations\*

Download and Upload Speed

● 10 Mbps and 1 Mbps

● 100 Mbps and 25 Mbps

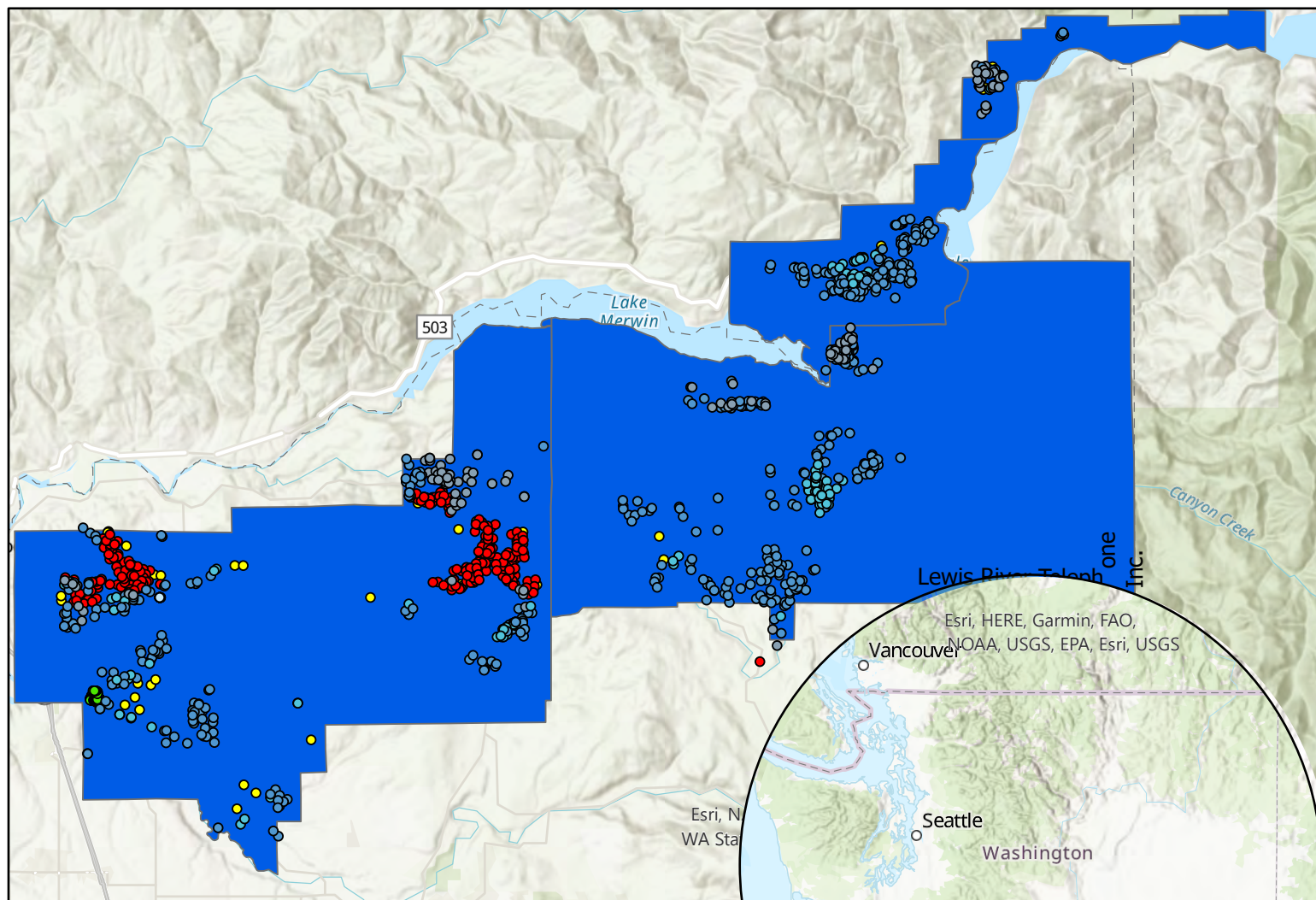
● 4 Mbps and 1 Mbps

Kalama has a SUSF UTC Broadband Buildout requirement of 122 locations by June 30, 2024. Kalama has provided coordinates for 71 locations where it has deployed broadband to during the 2021 fiscal year. The Company deployed to an additional 48 locations do not have coordinates at this time. All locations have 100/25 Mbps broadband speed capability. Coordinates will be provided during the next company report.

As this is not a grant program, these locations are not explicitly funded with SUSF support, however, SUSF support helps make it possible for these companies to deploy broadband.

\*Federal Universal Service Funds (FUSF) locations are a requirement of receiving federal high-cost support.

# Lewis River's SUSF Supported Broadband Locations



## Lewis River Deployed FY2021 TDS FUSF Locations\*

### Broadband Speed

- 100/25 Mbps
- 25/3 Mbps
- 25/5 Mbps

- 10 Mbps and 1 Mbps
- 100 Mbps and 25 Mbps
- 25 Mbps and 3 Mbps
- 25 Mbps and 5 Mbps

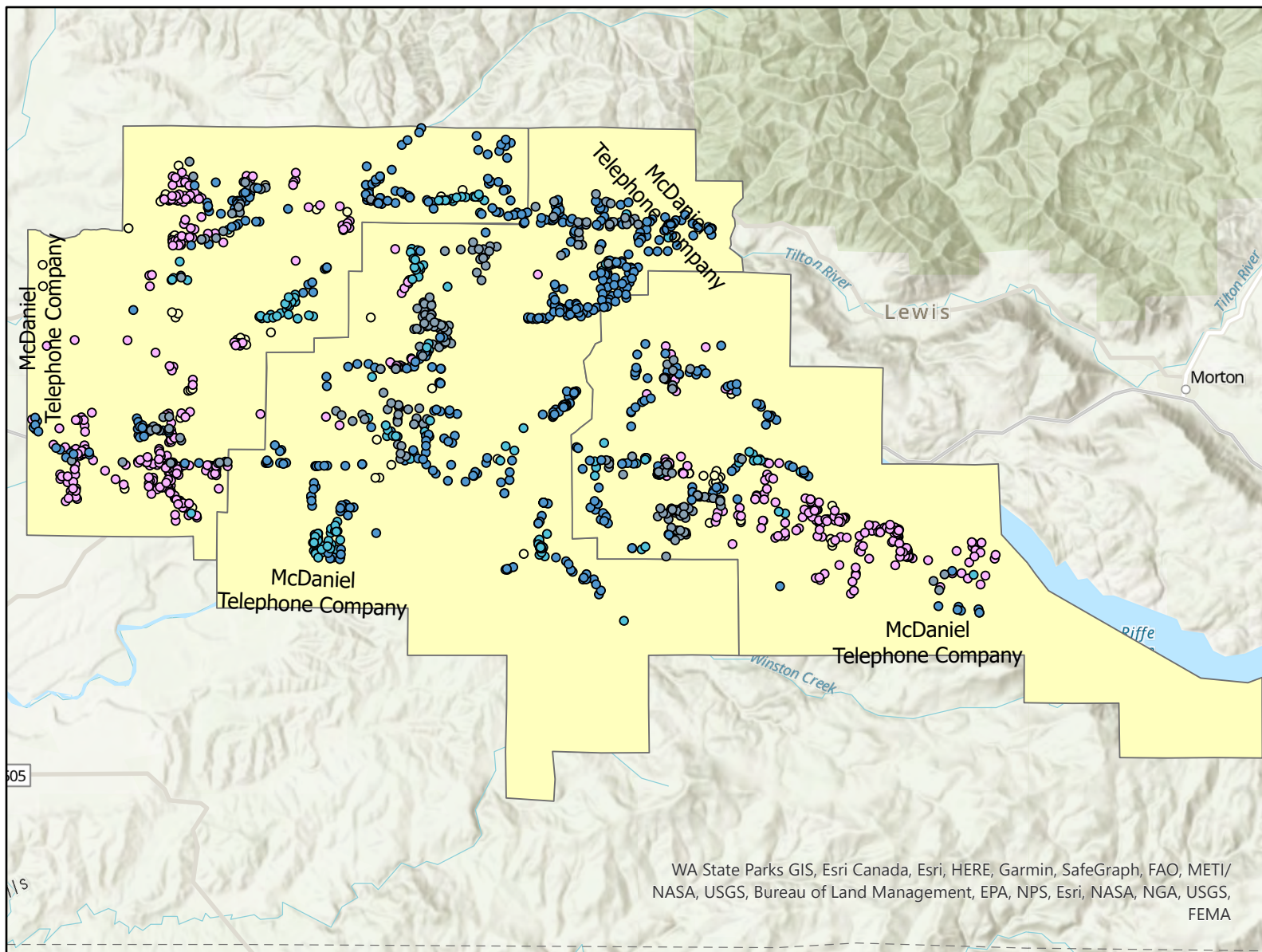
■ Lewis River Study Area

Lewis River has a SUSF UTC Broadband Buildout requirement of 264 locations by June 30, 2024. Lewis River has provided coordinates for 411 locations to where has deployed 25/3 Mbps (or faster) broadband speed capability during the 2021 fiscal year. This consist of 36 locations with 25/3 Mbps capability, 248 with 25/5 Mbps capability, and 127 with 100/25 Mbps capability.

As this is not a grant program, these locations are not explicitly funded with SUSF support, however, SUSF support helps make it possible for these companies to deploy broadband.

\*Federal Universal Service Funds (FUSF) locations are a requirement of receiving federal high-cost support.

# McDaniel's SUSF Supported Broadband Locations



## McDaniel Deployed FY2021 TDS FUSF Locations\*

### Broadband Speed

- 25/3 Mbps
  - 25/5 Mbps
  - 10 Mbps and 1 Mbps
  - 100 Mbps and 25 Mbps
  - 25 Mbps and 3 Mbps
  - 25 Mbps and 5 Mbps
- McDaniel Study Area

McDaniel has a SUSF UTC Broadband Buildout requirement of 350 locations by June 30, 2024. McDaniel has provided coordinates for 577 locations where it has deployed 25/3 Mbps (or faster) broadband speed capability during the 2021 fiscal year. This consist of 74 locations with 25/3 Mbps capability and 503 locations with 25/5 Mbps capability.

As this is not a grant program, these locations are not explicitly funded with SUSF support, however, SUSF support helps make it possible for these companies to deploy broadband.

\*Federal Universal Service Funds (FUSF) locations are a requirement of receiving federal high-cost support.