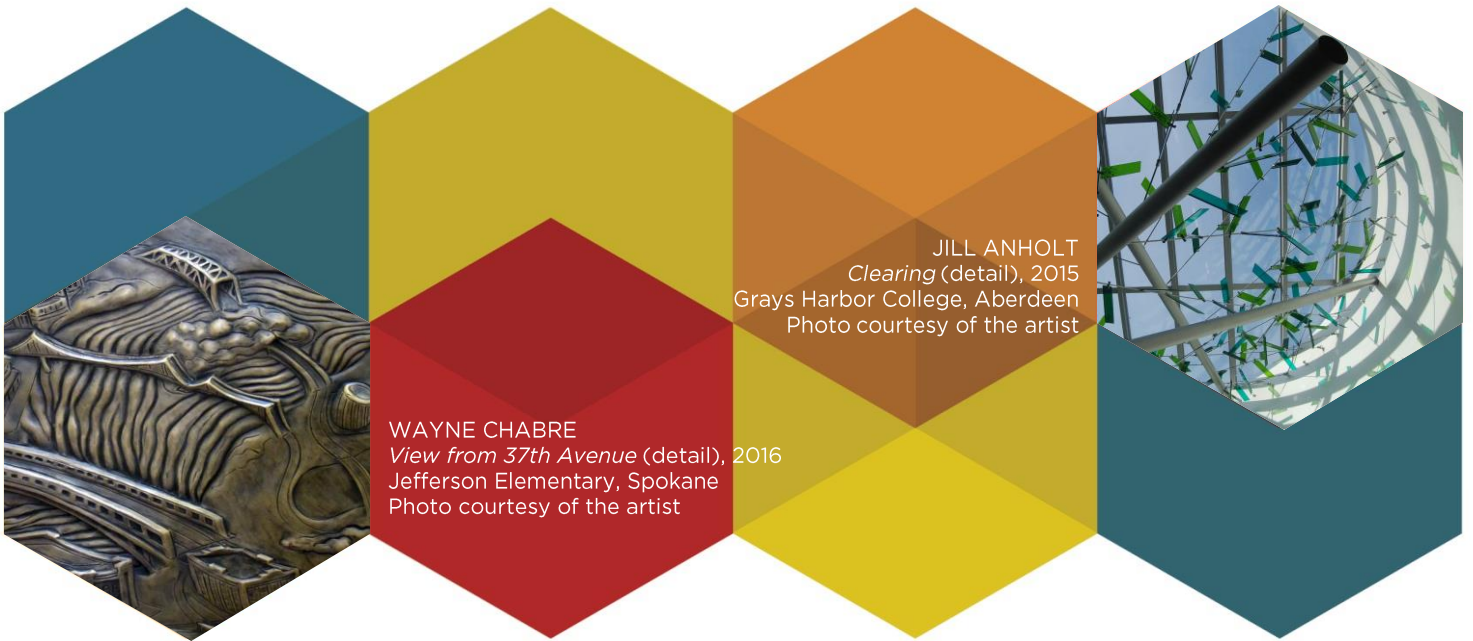




WASHINGTON STATE  
ARTS COMMISSION



WAYNE CHABRE  
*View from 37th Avenue (detail)*, 2016  
Jefferson Elementary, Spokane  
Photo courtesy of the artist

JILL ANHOLT  
*Clearing (detail)*, 2015  
Grays Harbor College, Aberdeen  
Photo courtesy of the artist

## 2017 Art in Public Places Annual Legislative Report

Prepared for the Office of Financial Management  
and the Fiscal Committees of the Washington State Legislature

---

Karen Hanan, Executive Director  
Washington State Arts Commission

# Table of Contents

- 1 Letter from Karen Hanan, Executive Director
- 2 Art in Public Places Report Overview
- 3 Art in Public Places Annual Legislative Report
  - 3.1 Study Group Convenings
  - 3.2 Closed Projects FY 2016-17
  - 3.3 Artwork Expenditures FY 2016-17
  - 3.4 AIPP Administrative Costs FY 2016-17
  - 3.5 AIPP Collection Care Costs FY 2016-17
  - 3.6 My Public Art Portal Costs FY 2016-17
  - 3.7 State Art Collection under Contract (as of 8/10/17)



STATE OF WASHINGTON  
**WASHINGTON STATE ARTS COMMISSION**  
711 Capitol Way S, Suite 600, PO Box 42675 Olympia, WA 98504-2675  
(360) 753-3860 • FAX (360) 586-5351

September 6, 2017

To the Office of Financial Management and the Fiscal Committees of the Legislature

Please find enclosed this year's annual report offering a comprehensive review of the operations and achievements of the Art in Public Places program.

The Washington State Arts Commission is justifiably proud of the program, one of the largest and most applauded in the country, and we welcome the opportunity to share it more completely with you.

Please do not hesitate to ask if you have questions regarding any aspect of the report. We will be happy to respond.

Sincerely,

Karen J. Hanan  
Executive Director  
360-586-2423. karen.hanan@arts.wa.gov



# Washington State Arts Commission

## Art in Public Places Program

### Introduction

This report covers the findings of the study group appointed by the Washington State Arts Commission (ArtsWA) to review operation of the one-half of one percent for works of art purchased or commissioned as required by [RCW 28A.335.210](#), [28B.10.027](#), and [43.17.200](#). As required in the 2015-17 capital construction budget, and anticipated for 2017-19, this report includes the following:

- (a) Projects purchased or commissioned per biennium;
- (b) Partner agencies;
- (c) Funding sources by fiscal year;
- (d) Artwork costs;
- (e) Administrative costs;
- (f) Collection care costs; and
- (g) Project status.

### Program Overview

The Art in Public Places program (AIPP) of ArtsWA facilitates the acquisition of artwork for the state's K-12 public schools, colleges, universities, and state agencies, enhancing and activating the built environment. Since its inception in 1974, AIPP regularly adjusts its practices to respond to the changing needs of its partners and the evolving field of public art. AIPP is charged with building a collection of professionally-created and publicly-accessible art as a cultural legacy for all citizens. In concert with that goal is the obligation to be transparent, responsibly manage public funds, and effectively partner with all stakeholders. While over half the nation's states have percent-for-art programs, AIPP is viewed as a leader in the field of public art because of its history, diversity, inclusive acquisition processes, and proactive collection care policies.

Artwork acquisitions managed by AIPP are funded through Washington's capital construction budget, using a formula of one-half of 1% of the state's portion of construction costs for new buildings. The art allocation for state agencies and public schools applies only to new construction. Universities and colleges also receive the one-half of 1%-for-art for renovation projects exceeding \$200,000. As per [RCW 43.46.095](#), these artworks become part of the State Art Collection, and ArtsWA is responsible for the inventory, restoration, and conservation of the collection. Emergent care and more extensive repairs are addressed as funding is available. In keeping with the terms of the 2015-17 capital budget proviso, up to 15% of each art allocation is reserved for program administrative costs, including salaries and benefits for 4 FTEs, and 5% of the adjusted total is reserved for the conservation of the State Art Collection. (Over the course of a biennium, the 5% generates the \$100,000 AIPP is currently authorized to expend from capital allotments for artwork care; both the House and Senate versions of the 2017-19 capital budget increases this to \$150,000.)

## State Art Collection

The State Art Collection is publicly owned, publicly sited, and publicly selected. It currently holds over 4,600 works, making Washington home to not only one of the oldest state public art collections, but also one of the largest. Two- and three-dimensional, free-standing and integrated artworks can be found at colleges, universities, K-12 public schools, and state agencies throughout Washington. The State Art Collection is shaped in an inclusive manner to represent the diversity of contemporary artistic production. Notable local, regional, and national artists are represented in the collection holdings.

## My Public Art Portal

ArtsWA received a technology grant from the Office of the Chief Information Officer (OCIO) for the 2015-17 biennium to fund the full implementation of My Public Art Portal, a searchable, online database of the State Art Collection. The \$305,000 grant supported one project manager, one writer/researcher, and one field worker, as well as all associated project costs (travel, software, office, and equipment costs). This two-year grant was phase 1 of an anticipated 4-year project that, when complete, will feature every work in the State Art Collection and include interactive features for educators, students, and the general public. (For the 2017-19 biennium, continued funding for My Public Art Portal was allotted through the State General Fund.)



Jean Whitesavage and Nick Lyle, *River Portraits (Tonhee and Bitter Cherry)* (detail), 2017. Painted aluminum, 5ft. diameter x 10in. deep. Cascade Middle School, Sedro-Woolley.

## Building Design Funding

Introduced in the 2016 supplemental capital budget, and anticipated for the 2017-19 version, higher education (community colleges, technical colleges, and universities) may work with ArtsWA to “expend up to ten percent of the projected art allocation for a project during the design phase in order to select an artist and design art to be integrated in the building design.” If a campus opts to begin the acquisition process during building design, the subsequent capital artwork funds “must be adjusted downward by the amount expended by a university or college during the design phase of the capital project.”

## Study Group Convenings

ArtsWA convened a study group in its offices on July 13 and August 10, 2017 to review AIPP operations. An overview of these discussions, including participants and meeting overviews, can be found in section 3.1 of this report (Study Group Convenings).

## Review Findings

### **(a) Projects purchased or commissioned per biennium**

Most acquisitions in the State Art Collection are site-integrated public works projects over the course of which locally-formed committees select artists to design, fabricate, and install artworks within state buildings or campuses. From committee orientation through artwork installation, public art purchases generally take 2-3 years to complete, spanning multiple fiscal years or biennia.

During the 2015-17 biennium, AIPP initiated 50 projects and closed 32. (In some cases, a project may result in the acquisition of more than one artwork.) The fiscal year breakdown is as follows:

In fiscal year 2016, AIPP initiated 19 projects and closed 13 (acquiring 24 total artworks).

In fiscal year 2017, AIPP initiated 31 projects and closed 19 (acquiring 31 total artworks).

For more details on purchases and commissions, please refer to section 3.2 of this report (Closed Projects FY 2016-17).

### **(b) Partner agencies**

ArtsWA partners with K-12 public schools, community and technical colleges, state universities, and state agencies. In the case of K-12 public schools, ArtsWA partners with the Office of the Superintendent of Public Instruction (OSPI), which manages K-12 capital artwork funds. ArtsWA enters into Interagency Agreements with each school district that hosts artworks from the State Art Collection.

During the 2015-17 biennium, ArtsWA partnered with:

15 community/technical colleges on 15 projects;

5 universities on 11 projects;

5 state agencies on 5 projects; and

58 public schools (within 36 school districts) on 58 projects

During the FY 2016-17 biennium, AIPP managed projects in 20 counties. Detailed information regarding expenditure amounts and partner agencies, and maps indicating project distribution by county, can be found in section 3.3 of this report (Artwork Expenditures FY 2016-17).

### **(c) Funding sources by fiscal year**

All public school projects are funded through the capital budget allotment provided directly to OSPI. Through K-12 Pooled Funds, a selection panel designates projects (with approval from the ArtsWA Board) that are then funded through the combined pool; they are not matched directly to a school construction project. In this report's sections "Artwork Expenditures FY 2016" and "Artwork Expenditures FY2017", the "Project Location" is the school that received the project through the application process. ArtsWA tracks projects with an AFRS code associated with the combined amount, not the allocation as determined by OSPI.

Information regarding all partner agency projects and expenditures can be found in section 3.3 and 3.4 of this report (Artwork Expenditures FY 2016 and Artwork Expenditures FY 2017).

**(d) Artwork costs**

For the period covering fiscal year 2016, AIPP expended a total of \$1,002,038.18 in artwork costs, exclusive of collection care (conservation and maintenance) costs. For fiscal year 2017, that total was \$1,527,018.52. These amounts were reimbursed to ArtsWA via partner agency capital allotments.

Information regarding all partner agency projects and expenditures can be found in sections 3.3 and 3.4 of this report (Artwork Expenditures FY 2016, and Artwork Expenditures FY 2017).



**(e) Administrative costs**

In FY17, the Art in Public Places program included nine staff members (8.1 FTEs). Of these, 1.8 FTEs (Collections Manager and Conservation Technician) were funded by the general fund and 2.3 FTEs (Portal Project Manager, Writer/Researcher, and Field Worker) were funded through the 2015-17 OCIO technology grant. For the purposes of this report, costs for collection activities, including OCIO funds, are included under “(f) Collection care costs.” All other capital-funded program administrative costs—including salaries, benefits, and travel expenses—totaled \$273,438 in FY16 and \$353,384 in FY17, and are included in section 3.4 of this report (AIPP Administrative Costs FY 2016-17).

Art in Public Places project managers regularly travel statewide to meet with local art selection committees. Local community input is key to the success of the program and the works purchased for the State Art Collection.

**(f) Collection care costs**

The total expended in fiscal year 2016 for collection care was \$217,965, including the salaries and benefits for the Collections Manager and Conservation Technician (1.8 FTE). In 2017 that amount was \$219,967. \$100,000 of the combined total (\$437,932), was reimbursed through capital reimbursements (\$55,492 in FY2016, \$44,508 in FY2017).

As per the 2015-17 enacted Capital Budget, ArtsWA was authorized to spend up to \$100,000 per biennium for the maintenance or conservation of works in the State Art Collection.

For FY16, the total expended for the OCIO grant-funded project My Public Art Portal was \$85,121. For FY17, the total expended for My Public Art Portal was \$219,699.

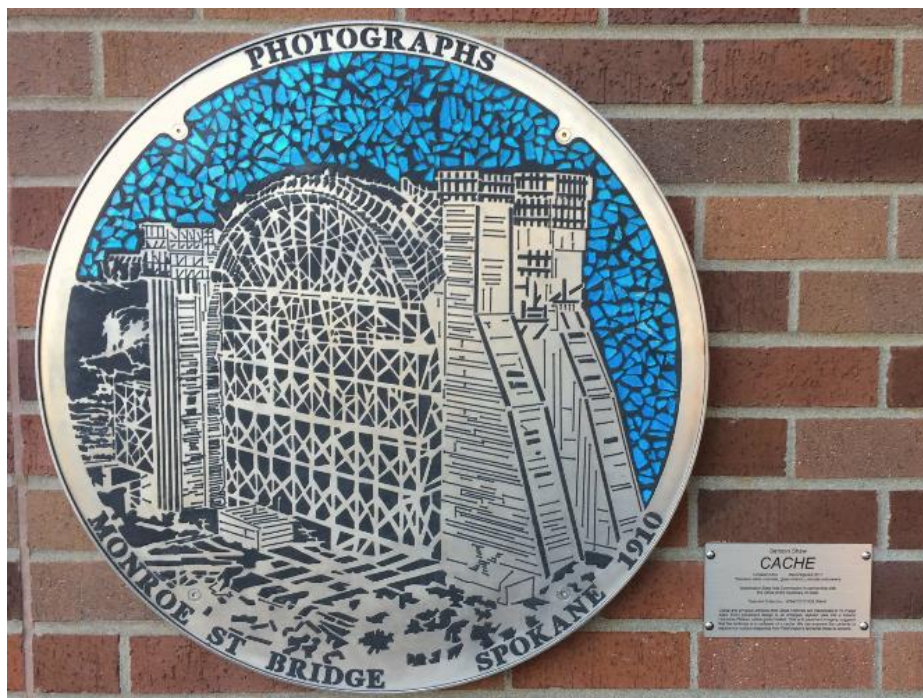
Andrea Wilbur-Sigo, *Female House Post*, 2015. Carved cedar, paint, 10ft. x 34in. University of Washington, Seattle.

For details regarding collection care costs, please refer to section 3.5 of this packet (AIPP Collection Care Costs FY 2016-17); for details on costs associated with the OCIO grant, see section 3.6 (My Public Art Portal Costs FY 2016-17).

**(g) Project status**

As of August 10, 2017, there were 33 projects under contract. Of these, 12 were in design and 21 were in fabrication. The projects are located in 15 counties throughout Washington.

For more information related to these projects, please review section 3.7 (State Art Collection Currently under Contract [as of 8/10/17]).



Benson Shaw, *Cache*, 2004 (reconfigured 2017). Stainless steel, glass, concrete, pavers, 26in. diameter (1 of 10). Office of the Secretary of State, Eastern Washington Regional Archives, Cheney.



## 3.1

# Study Group Convenings



# Legislative Report Study Group Convenings

## Overview

As required by the 2015-17 Washington State capital budget (and anticipated for 2017-19), the Washington State Arts Commission (ArtsWA) convened a study group to review the Art in Public Places program (AIPP). From the enacted 2015-17 Capital Budget (submission date revised in 2016 supplemental budget):

The executive director of the arts commission shall appoint a study group to review the operations of the one-half of one percent for works of art purchased or commissioned as required by RCW 28A.335.210, 28B.10.027, and 43.17.200. The findings of the review must be reported annually to the office of financial management and the fiscal committees of the legislature by September 15th. The review must include, but is not limited to, the following:

- (a) Projects purchased or commissioned per biennium;
- (b) Partner agencies;
- (c) Funding sources by fiscal year;
- (d) Artwork costs;
- (e) Administrative costs;
- (f) Collection care costs; and
- (g) Project status.

Meeting 1 – July 13, 2017

### **Arts Commission conference room, 3:00pm to 4:30pm**

Participants: Mike Sweney, AIPP Program Manager, ArtsWA  
Janae Huber, AIPP Collections Manager, ArtsWA  
Karen Hanan, Executive Director, ArtsWA  
Terry West, Deputy Director, ArtsWA  
Jeanne Rynne, Director of Facilities, The Evergreen State College  
Cheryl Bivens, Capital Budget Analyst, State Board for Community &  
Technical Colleges (SBCTC)  
Roen Esmond, Disbursement Officer, School Facilities Capital Projects, OSPI  
Diann Lewallen, Small Agency Financial Services, DES

Absent: Marygrace Jennings, Cultural Resources Manager, DES  
Randy Newman, Business Manager, School Facilities Capital Projects, OSPI

In attendance: ArtsWA/AIPP Staff: Deane Shellman, Program Coordinator; Marissa Laubscher, Project Manager; Chuck Zimmer, Project Manager; Adam Fah, Conservation Technician; Heide Fernandez-Llamazares, My Public Art Portal Project Manager; Valerie Peterman, My Public Art Portal Writer/Researcher

AIPP overview. Meeting started with introductions and an overview of the AIPP program via PowerPoint and conversation. There were few comments from attendees.

2017-19 Capital Budget. At the date of the meeting, the legislature had not passed a comprehensive Capital Budget for the 2017-19 biennium, but instead passed a reappropriations-only budget. Absent from the currently-enacted budget is any proviso language affecting AIPP—no administration cap, collection care cap, or 10% allowance for project initiation during design for higher education, and, remarkably, no requirement to produce and submit this Annual Report. Sweney told the group that AIPP expects the final 2017-19 Capital Budget to carry forward language from the 2017 supplemental budget, as it appears in the House version of the 2017-19 Capital Budget bill, and continue to proceed with plans for the September 15 submittal of the AIPP Annual Report.



Lucinda Parker, *Two Swans*, 2016. Acrylic paint on canvas, 5ft. by 9ft. Lake Roosevelt K-12, Coulee Dam.

2016 report. The group discussed the changes in 2016 from 2015 that were inspired by conversations during the 2016 Study Group meetings. There was overall satisfaction that the report was well-presented and the information clearly-articulated. Bivens remarked that she had noted a section that was a little confusing, but didn't bring her notated copy, but would pass it along to Sweney.

Identifying artwork allocations. Sweney explained that ArtsWA has been working with OFM to create a document listing artwork allocations by agency. This would include all state agencies.

Partner communication. Sweney invited suggestions from the group for meetings with partner agency staff who interact – or should interact – with AIPP projects. (AIPP has recently presented

before DES project managers and the School Facilities Technical Advisory Committee (TAC), for example.) Esmond asked how she could help better communicate with school districts that they are eligible to apply for K-12 Pooled Funds. AIPP staff will work with OSPI to possibly redraft portions of the notification letter that is sent to districts. Language could be edited or strengthened, and the specific artwork amount generated by state-funded construction should be removed as it creates confusion. There is no direct correlation between the amount of artwork funding generated from a specific school's construction and the project amount awarded through the application process.

Conservation cap. In the 2017-19 Capital Budget, the conservation cap is expected to be raised from \$100,000 to \$150,000. Currently, AIPP withholds 4.25% of each artwork allocation for conservation; with the addition of a third project manager (hired June 2016), funds have increased. Therefore, AIPP does not anticipate withholding a higher percentage to reach \$150K. AIPP staff will monitor the collections account and adjust, if necessary, though not likely until FY2018.

10% during design. Bivens asked how projects could be started earlier. Sweney reported that the language in the 2016 supplemental budget (allowing higher education to borrow up to 10% of the anticipated artwork allocation early, in order to integrate an artwork's design into the building's design) is expected to appear in the comprehensive 2017-19 Capital Budget. As previously noted, this did not appear in the enacted budget, but it was in both the House and Senate draft versions.

Next meeting. August's meeting agenda will focus on a review of the seven (a-g) items specified in the Capital Budget. AIPP staff reported that FY2017 projects were in the process of being closed, so a review during Meeting 1 of completed projects and expended funds was premature. Additionally, the study group will continue discussions on topics introduced at the first meeting. Any unresolved concerns after August's meeting may be addressed at a third meeting, which is currently optional.

Meeting 1 was adjourned at 4:20pm.

Meeting 2 – August 10, 2017

**Arts Commission conference room, 3:00pm to 4:30pm**

Participants: Jeanne Rynne, Director of Facilities, The Evergreen State College  
Randy Newman, Business Manager, School Facilities Capital Projects, OSPI  
Roen Esmond, Disbursement Officer, School Facilities Capital Projects, OSPI  
Diann Lewallen, Small Agency Financial Services, DES  
Marygrace Jennings, Cultural Resources Manager, DES  
Mike Sweney, AIPP Program Manager, ArtsWA  
Janae Huber, AIPP Collections Manager, ArtsWA  
Deane Shellman, AIPP Program Coordinator, ArtsWA  
Karen Hanan, Executive Director, ArtsWA  
Terry West, Deputy Director, ArtsWA

Absent: Cheryl Bivens, Capital Budget Analyst, SBCTC

Overview of July 13 meeting. Staff reviewed notes from the first meeting and invited additional input.

Reviewed draft of 2017 report. The study group reviewed drafts of all sections of the 2017 annual report. AIPP staff explained that the close of FY17 was still in progress, so some numbers will need to be adjusted and/or confirmed. The group members will have a chance to review the final draft prior to its submission. Several members offered suggestions for formatting and clarity that will be incorporated in the final version. Some examples include additional maps showing statewide distribution of projects, clearer explanation of FY16 and FY17 expenditure amounts, more images of recent artwork acquisitions, and increased use of featured text insets to highlight specific points (as currently exists in the Collections section). Jennings noticed references to the 2015-17 Capital Budget citing the bill number; AIPP should be using the correct/enacted reference.

Continued discussion of AIPP program.

- 2017-19 Capital Budget. The legislature has still only passed a reappropriations capital budget. Despite the lack of proviso language affecting AIPP—no administration cap, collection care cap, or 10% allowance for project initiation during design for higher education, and, remarkably, no requirement to produce and submit this Annual Report—AIPP will continue to proceed with plans for the September 15 submittal of the AIPP Annual Report. AIPP staff is currently strategizing for FY18 without new 2017-19 funding.
- 10% during design. Sweney mentioned that OFM may have concerns about higher education partners' ability to take advantage of "borrowing" 10% of the anticipated artwork allocation, if the reimbursement comes from a future fiscal year or biennium. He related that AIPP had not had an opportunity to work with a college or university to test out the 2016 supplemental language that addresses this. Hanan has had preliminary conversations about changing the RCW to clarify that the one-half of one percent funding formula applies to design, which could be beneficial to all partner agencies, not only higher education.
- Conservation cap. AIPP will continue to operate with the 2015-17 cap (\$100,000 per biennium) but expects this to be increased to \$150,000 in the 2017-19 budget. Huber related that she will plan accordingly, and reiterated that she works with a biennial budget and therefore could spend more than \$50,000 in FY18, regardless.
- Funding process. Sweney, Hanan, and West met with several OFM staff earlier in the week. The purpose was to discuss a more efficient way to expend artwork appropriations. It was more of an information-gathering conversation, but several approaches were suggested that could change how monies are appropriated for artwork. Sweney discussed this with the study group and members expressed interest in participating with OFM in future conversations.

- Partner Communication. Sweney again inquired about opportunities for increased communication with partner agencies. The study group members were encouraged to continue this dialogue and make suggestions as they arise.

Wrap up and next steps. Committee agreed that an additional in-person meeting was not necessary, but welcomed the opportunity to review the final draft prior to its submission. Staff will distribute the draft via email by September 1<sup>st</sup>, allowing for edits, if necessary, before the September 15<sup>th</sup> deadline.

Meeting 2 was adjourned at 4:30pm.



Lucinda Parker, *Two Terns*, 2016. Acrylic paint on canvas, 5ft. by 9ft. Lake Roosevelt K-12, Coulee Dam.

## 3.2

### Closed Projects FY 2016-17



WASHINGTON STATE  
ARTS COMMISSION

## STATE ART COLLECTION

Closed Projects

FY 2016-17

The list below, sorted by county, reflects public art projects that were completed during the 2015-2017 biennium (July 1, 2015 through June 30, 2017). The Artwork cost is the total amount expended on the project, not inclusive of AIPP administration and collection care costs. The Artwork Cost includes design, engineering, fabrication, subcontractors, transportation, installation, and other related costs. Please contact AIPP staff for more information on these projects.

### Clark County

---

Partner Agency: Evergreen School District

Hosting Site: Henrietta Lacks Health and Bioscience High School

Installation date: 7/18/2016

Artwork cost \$ 60,000.00

Artist: Kate Kaman and Joel Erland

Title: *Samara*

Medium: Cast aluminum and brass mesh

Dimensions: 35 ft x 12 in x 12 ft



Partner Agency: Evergreen School District

Hosting Site: Cascadia Technical Academy

Installation date: 10/28/2016

Artwork cost \$ 45,000.00

Artist: Brad Rude

Title: *New Heights*

Medium: Cast bronze and stainless steel

Dimensions: 8 ft x 4 ft 7 in x 4 ft 7 in





Partner Agency: Clark College  
Hosting Site: Clark College  
Installation date: 12/23/2016  
Artwork cost \$ 109,917.69

Artist: Adam Kuby  
Title: *Drop*  
Medium: Steel, copper, clay, glass, and plastic  
Dimensions: Overall Interior: 36 ft x 20 ft x 21 ft; Exterior: 29 ft x 8 ft x 8 ft



## Cowlitz County

---

Partner Agency: Lower Columbia College  
Hosting Site: Lower Columbia College  
Installation date: 7/30/2015  
Artwork cost \$ 106,322.71

Artist: rhiza A+D  
Title: *Blossom of Life: (I think)*  
Medium: Steel, paint, aluminum, resin  
Dimensions: 16 ft x 15 ft x 10 ft



Partner Agency: Woodland School District  
Hosting Site: Woodland High School  
Installation date: 10/30/2015  
Artwork cost \$ 90,075.37

Artist: Tim Prentice and David Colbert  
Title: *Reflections*  
Medium: Aluminum, lexan, and stainless steel  
Dimensions: 96 in x 240 in x 240 in



## Grant County

---

Partner Agency: Grand Coulee Dam School District  
Hosting Site: Lake Roosevelt Jr-Sr High School  
Installation date: 6/21/2016  
Artwork cost \$ 12,500.00

Artist: Lucinda Parker  
Title: *6 Paintings for Lake Roosevelt Schools: Two Turkeys*  
Medium: Acrylic on canvas and wood  
Dimensions: 5 ft 3 in x 9 ft 3 in x 2 1/2 in



Partner Agency: Grand Coulee Dam School District  
Hosting Site: Lake Roosevelt Jr-Sr High School  
Installation date: 6/21/2016  
Artwork cost \$ 12,500.00

Artist: Lucinda Parker  
Title: *6 Paintings for Lake Roosevelt Schools: Two Terns*  
Medium: Acrylic on canvas and wood  
Dimensions: 5 ft 3 in x 9 ft 3 in x 2 1/2 in



Partner Agency: Grand Coulee Dam School District  
Hosting Site: Lake Roosevelt Elementary School  
Installation date: 6/21/2016  
Artwork cost \$ 12,500.00

Artist: Lucinda Parker  
Title: *6 Paintings for Lake Roosevelt Schools: Two Swans*  
Medium: Acrylic on canvas and wood  
Dimensions: 5 ft 3 in x 9 ft 3 in x 2 1/2 in



Partner Agency: Grand Coulee Dam School District  
Hosting Site: Lake Roosevelt Elementary School  
Installation date: 6/21/2016  
Artwork cost \$ 12,500.00

Artist: Lucinda Parker  
Title: *6 Paintings for Lake Roosevelt Schools: Two Magpies*  
Medium: Acrylic on canvas and wood  
Dimensions: 5 ft 3 in x 9 ft 3 in x 2 1/2 in



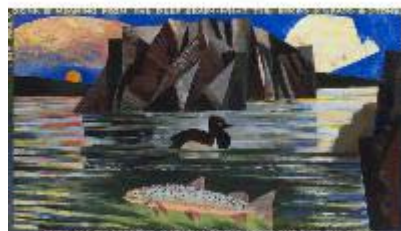
Partner Agency: Grand Coulee Dam School District  
Hosting Site: Lake Roosevelt Elementary School  
Installation date: 6/21/2016  
Artwork cost \$ 12,500.00

Artist: Lucinda Parker  
Title: *6 Paintings for Lake Roosevelt Schools: Two Owls*  
Medium: Acrylic on canvas and wood  
Dimensions: 5 ft 3 in x 9 ft 3 in x 2 1/2 in



Partner Agency: Grand Coulee Dam School District  
Hosting Site: Lake Roosevelt Jr-Sr High School  
Installation date: 6/21/2016  
Artwork cost \$ 12,500.00

Artist: Lucinda Parker  
Title: *6 Paintings for Lake Roosevelt Schools: Duck & Fish*  
Medium: Acrylic on canvas and wood  
Dimensions: 5 ft 3 in x 9 ft 3 in x 2 1/2 in



## Grays Harbor County

---

Partner Agency: Grays Harbor College  
Hosting Site: Grays Harbor College  
Installation date: 9/9/2015  
Artwork cost \$ 77,494.55

Artist: Jill Anholt  
Title: *CLEARING*  
Medium: Aluminum and terrazzo  
Dimensions: 16 ft x 16 ft (diameter)



Partner Agency: Grays Harbor College  
Hosting Site: Grays Harbor College  
Installation date: 9/9/2015  
Artwork cost \$ 77,494.55

Artist: Jill Anholt  
Title: *CLEARING*  
Medium: Glass, resin, stainless steel  
Dimensions: 22 ft 4 in x 16 ft (diameter)



## King County

---

Partner Agency: Shoreline School District  
Hosting Site: Shorecrest High School  
Installation date: 12/31/2015  
Artwork cost \$ 23,333.33

Artist: Suzanne Lee  
Title: *Wonder*  
Medium: Dichroic glass, aluminum, steel, mirrored stainless steel  
Dimensions: 12 ft x 44 ft x 17 ft



Partner Agency: Shoreline School District  
Hosting Site: Shorecrest High School  
Installation date: 12/31/2015  
Artwork cost \$ 23,333.33

Artist: Suzanne Lee  
Title: *Wonder*  
Medium: Dichroic glass, aluminum, steel, mirrored stainless steel  
Dimensions: 12 ft x 44 ft x 17 ft



Partner Agency: Shoreline School District  
Hosting Site: Shorecrest High School  
Installation date: 12/31/2015  
Artwork cost \$ 23,333.34

Artist: Suzanne Lee  
Title: *Wonder*  
Medium: Dichroic glass, aluminum, steel, mirrored stainless steel  
Dimensions: 12 ft x 44 ft x 17 ft



Partner Agency: University of Washington  
Hosting Site: University of Washington  
Installation date: 12/29/2015  
Artwork cost \$ 66,921.56

Artist: John Patkau and Patricia Patkau  
Title: *Mirrorfold*  
Medium: Polished stainless steel  
Dimensions: 9 ft x 25 ft x 3 ft



Partner Agency: North Seattle College  
Hosting Site: North Seattle College  
Installation date: 7/28/2016  
Artwork cost \$ 86,657.41

Artist: Cris Bruch  
Title: *Drift*  
Medium: Aluminum composite  
Dimensions: 27 ft x 7 ft x 14 in



Partner Agency: Bellevue College  
Hosting Site: Bellevue College  
Installation date: 4/18/2017  
Artwork cost \$ 101,796.41

Artist: Luke Blackstone  
Title: *Homeostasis*  
Medium: Stainless steel, glass, electrical and mechanical components  
Dimensions: 19 1/2 ft x 8 ft x 5 ft



Partner Agency: Green River Community College  
Hosting Site: Green River College  
Installation date: 3/1/2016  
Artwork cost \$ 14,476.45

Artist: Bruce Andersen and Shannon Andersen  
Title: *Simple Machines: Lever*  
Medium: Stainless steel, concrete  
Dimensions: 3 ft 8 in x 4 ft x 4 ft



Partner Agency: Green River Community College  
Hosting Site: Green River College  
Installation date: 3/1/2016  
Artwork cost \$ 14,476.45

Artist: Bruce Andersen and Shannon Andersen  
Title: *Simple Machines: Wedge*  
Medium: Weathering steel, concrete  
Dimensions: 6 ft x 3 ft 8 in x 2 ft



Partner Agency: Green River Community College  
Hosting Site: Green River College  
Installation date: 3/1/2016  
Artwork cost \$ 14,476.49

Artist: Bruce Andersen and Shannon Andersen  
Title: *Simple Machines: Pulley*  
Medium: Stainless steel, galvanized steel  
Dimensions: 13 ft 6 in x 2 ft x 1 ft 6 in



Partner Agency: Green River Community College  
Hosting Site: Green River College  
Installation date: 3/1/2016  
Artwork cost \$ 14,476.45

Artist: Bruce Andersen and Shannon Andersen  
Title: *Simple Machines: Inclined Plane*  
Medium: Stainless steel, weathering steel, concrete  
Dimensions: 4 ft 7 in x 6 ft 2 in x 2 ft



Partner Agency: Green River Community College  
Hosting Site: Green River College  
Installation date: 3/1/2016  
Artwork cost \$ 14,476.45

Artist: Bruce Andersen and Shannon Andersen  
Title: *Simple Machines: Wheel & Axle*  
Medium: Stainless steel, galvanized steel  
Dimensions: 3 ft 6 in x 4 ft 4 in x 3 ft



Partner Agency: Green River Community College  
Hosting Site: Green River College  
Installation date: 3/1/2016  
Artwork cost \$ 14,476.45

Artist: Bruce Andersen and Shannon Andersen  
Title: *Simple Machines: Screw*  
Medium: Stainless steel  
Dimensions: 2 ft 6 in x 2ft 2 in x 2 ft 2 in



Partner Agency: University of Washington  
Hosting Site: University of Washington  
Installation date: 11/25/2015  
Artwork cost \$ 8,313.85

Artist: Andrea Wilbur-Sigo  
Title: *Female House Post*  
Medium: Port Orford cedar and paint  
Dimensions: 10 ft x 34 in



Partner Agency: University of Washington  
Hosting Site: University of Washington  
Installation date: 11/25/2015  
Artwork cost \$ 8,313.85

Artist: Andrea Wilbur-Sigo  
Title: *Male House Post*  
Medium: Port Orford cedar and paint  
Dimensions: 10 ft x 34 in



## Kittitas County

---

Partner Agency: Central Washington University  
Hosting Site: Central Washington University  
Installation date: 6/24/2017  
Artwork cost \$ 182,222.06

Artist: Ball-Nogues Studio  
Title: *Secondhand Geology*  
Medium: Stainless steel  
Dimensions: 20 ft 8 in x 1 ft 8 in x 1 ft 8 in



Partner Agency: Central Washington University  
Hosting Site: Central Washington University  
Installation date: 6/30/2017  
Artwork cost \$ 35,876.00

Artist: John Medwedeff  
Title: *Prow*  
Medium: Forged and fabricated steel plate  
Dimensions: 13 ft x 4 ft x 7 1/2 ft



## Pierce County

---

Partner Agency: Bates Technical College  
Hosting Site: Bates Technical College  
Installation date: 9/1/2015  
Artwork cost \$ 74,964.26

Artist: Heath Satow  
Title: *YES*  
Medium: Stainless steel  
Dimensions: 18 ft x 38 in x 38 in



Partner Agency: Military Department  
Hosting Site: Camp Murray  
Installation date: 10/1/2016  
Artwork cost \$ 40,375.00

Artist: Jack Archibald  
Title: *New Horizon*  
Medium: Glass  
Dimensions: 8 ft x 32 ft





## Snohomish County

---

Partner Agency: Snohomish School District  
Hosting Site: Snohomish High School  
Installation date: 5/30/2017  
Artwork cost \$ 25,923.51

Artist: Kristin Tollefson  
Title: *Ebb & Flow*  
Medium: Polyurethane, resin, and concrete  
Dimensions: Tiled walkway and five cylinders, each 28-48 in height (variable) x 16 in diameter



Partner Agency: Snohomish School District  
Hosting Site: Valley View Middle School  
Installation date: 10/28/2016  
Artwork cost \$ 25,923.51

Artist: Ben Hirschhoff  
Title: *Utilitus Cloud*  
Medium: Aluminum with programmed LEDs  
Dimensions: 5 ft x 34 ft 9 in x 2 1/2 in



Partner Agency: Marysville School District  
Hosting Site: Getchell High School  
Installation date: 5/26/2017  
Artwork cost \$ 11,981.86

Artist: Dan Friday  
Title: *Full Circle Totem*  
Medium: Blown and sculpted hot glass  
Dimensions: 27 in x 7 in x 4 in



Partner Agency: Marysville School District  
Hosting Site: Getchell High School  
Installation date: 5/26/2017  
Artwork cost \$ 11,981.86

Artist: Alfredo Arreguin  
Title: *Serval*  
Medium: Oil on canvas  
Dimensions: 4 ft x 3 ft x 1 1/2 in



Partner Agency: Marysville School District  
Hosting Site: Getchell High School  
Installation date: 5/26/2017  
Artwork cost \$ 11,981.87

Artist: Cappy Thompson  
Title: *Horses and Pipers*  
Medium: Vitreous enamels reverse-painted on blown glass  
Dimensions: 20 in x 13 1/2 in x 13 1/2 in



Partner Agency: Marysville School District  
Hosting Site: Getchell High School  
Installation date: 5/26/2017  
Artwork cost \$ 7,615.87

Artist: Marita Dingus  
Title: *Hushpuppy*  
Medium: Glass and copper  
Dimensions: 28 in x 16 in x 12 in



## Spokane County

---

Partner Agency: Cheney School District  
Hosting Site: Cheney Middle School  
Installation date: 4/4/2017  
Artwork cost \$ 35,000.00

Artist: Susan Zoccola  
Title: *Palouse*  
Medium: Stainless steel, brass, aluminum  
Dimensions: 6 ft x 70 ft x 3 ft 4 in (overall)



Partner Agency: Spokane Public Schools  
Hosting Site: Westview Elementary School  
Installation date: 9/21/2016  
Artwork cost \$ 47,125.00

Artist: Katy Stone  
Title: *Ray*  
Medium: Oil on aluminum and stainless steel cable  
Dimensions: 18 ft x 29 in x 9 ft



Partner Agency: Spokane Public Schools  
Hosting Site: Westview Elementary School  
Installation date: 9/21/2016  
Artwork cost \$ 47,125.00

Artist: Katy Stone  
Title: *Falls*  
Medium: Oil on aluminum  
Dimensions: 13 ft x 16 ft 9 in x 3 in



Partner Agency: Spokane Public Schools  
Hosting Site: Jefferson Elementary School  
Installation date: 10/14/2016  
Artwork cost \$ 95,000.00

Artist: Wayne Chabre  
Title: *View from 37th Avenue*  
Medium: Bronze  
Dimensions: 45 in x 20 ft 3 in x 2 in



Partner Agency: Spokane Public Schools  
Hosting Site: Joel E Ferris High School  
Installation date: 12/28/2016  
Artwork cost \$ 100,000.59

Artist: Ann Gardner  
Title: *Journey*  
Medium: Aluminum, glass, and metal leaf  
Dimensions: 7 ft x 20 ft 9 in x 1 ft 6 in



Partner Agency: Spokane Public Schools  
Hosting Site: Salk Middle School  
Installation date: 6/8/2017  
Artwork cost \$ 40,000.00

Artist: Tom Anderson  
Title: *River of Knowledge*  
Medium: Copper, aluminum, wood, and acrylic  
Dimensions: 4 ft x 32 ft x 1 5/8 in



Partner Agency: Office of the Secretary of State  
Hosting Site: Eastern Washington Regional Archives  
Installation date: 6/30/2017  
Artwork cost \$ 20,672.00

Artist: Benson Shaw  
Title: *CACHE*  
Medium: Stainless steel, concrete, glass shards, concrete unit pavers  
Dimensions: Each disk 26 in (diameter), entry pavement 13 ft 2 in x 59 ft 1 in



## Thurston County

---

Partner Agency: The Evergreen State College  
Hosting Site: The Evergreen State College  
Installation date: 7/14/2016  
Artwork cost \$ 3,691.42

Artist: Amanda Knowles

Title: *Basis II*

Medium: Screenprint and acrylic on paper, Duralar with handcutting  
Dimensions: 45 in x 33 in



Partner Agency: The Evergreen State College  
Hosting Site: The Evergreen State College  
Installation date: 7/14/2016  
Artwork cost \$ 3,691.42

Artist: Amanda Knowles

Title: *Basis III*

Medium: Screenprint and acrylic on paper, Duralar with handcutting  
Dimensions: 45 in x 33 in



Partner Agency: The Evergreen State College  
Hosting Site: The Evergreen State College  
Installation date: 7/14/2016  
Artwork cost \$ 1,126.78

Artist: Amanda Knowles

Title: *Detailed Instance I*

Medium: Screenprint and acrylic on paper, Duralar with handcutting  
Dimensions: 17 in x 20 1/2 in



Partner Agency: The Evergreen State College  
Hosting Site: The Evergreen State College  
Installation date: 7/14/2016  
Artwork cost \$ 1,126.78

Artist: Amanda Knowles

Title: *Detailed Instance II*

Medium: Screenprint and acrylic on paper, Duralar with handcutting  
Dimensions: 17 in x 20 1/2 in



## Walla Walla County

---

Partner Agency: Department of Corrections and Port of Walla Walla  
Hosting Site: Port of Walla Walla  
Installation date: 1/1/2016  
Artwork cost \$ 60,511.34

Artist: Koryn Rolstad  
Title: *Illuminated Gateway Arbors*  
Medium: Aluminum, dichroic substrate, concrete, regional stones  
Dimensions: 19 ft x 28 ft x 22 1/2 ft



Partner Agency: Department of Corrections and Port of Walla Walla  
Hosting Site: Port of Walla Walla  
Installation date: 1/1/2016  
Artwork cost \$ 60,511.34

Artist: Koryn Rolstad  
Title: *Illuminated Gateway Arbors*  
Medium: Aluminum, dichroic substrate, concrete, regional stones  
Dimensions: 20 ft x 32 3/16 ft x 32 ft



## Whatcom County

---

Partner Agency: Western Washington University  
Hosting Site: Western Washington University  
Installation date: 12/14/2015  
Artwork cost \$ 38,117.46

Artist: Claude Zervas  
Title: *Nooksack Middle Fork*  
Medium: Four channel video  
Dimensions: 50 in x 47 in x 5 in



## Yakima County

---

Partner Agency: Yakima School District  
Hosting Site: Yakima Valley Technical Skills Center  
Installation date: 10/8/2015  
Artwork cost \$ 105,765.21

Artist: Pam Beyette  
Title: *Ahead of the Curve*  
Medium: Bronze and stainless steel  
Dimensions: 16 ft 4 in x 30 in x 39 in



Partner Agency: Selah School District  
Hosting Site: Selah Middle School  
Installation date: 4/10/2016  
Artwork cost \$ 70,000.00

Artist: Judith Caldwell and Daniel Caldwell  
Title: *The Golden Apples*  
Medium: Unique cast bronze, stainless steel  
Dimensions: 10 ft x 50 ft x 2 1/2 in (overall)



Partner Agency: Wapato School District  
Hosting Site: Wapato High School  
Installation date: 1/14/2016  
Artwork cost \$ 10,000.00

Artist: Carl Bryant and Sandra Bryant  
Title: *Community*  
Medium: Glass mosaic  
Dimensions: 7 ft x 4 ft x 1 3/4 in



Partner Agency: Wapato School District  
Hosting Site: Wapato High School  
Installation date: 1/14/2016  
Artwork cost \$ 50,000.00

Artist: Carl Bryant and Sandra Bryant  
Title: *Our Roots Give Us Wings*  
Medium: Glass mosaic  
Dimensions: 7 ft x 28 ft x 1 3/4 in



3.3

Artwork Expenditures  
FY 2016-17



This list includes all public art projects receiving any amount of funding during fiscal year 2016 (July 1, 2015 through June 30, 2016). The Expenditures section lists the amount spent during the fiscal year; it does not indicate the final project cost. The Status section includes projects that are installed and completed (“Closed”), in design (“Proposal”), or in fabrication (“Commission”). Please contact AIPP staff for more information on these projects.

Reference No.	Artist	Project Location	Partner Agency	Status	Expenditures
WSAC2011.021	Anholt, Jill	Grays Harbor College	Grays Harbor College	Closed	\$35,887.59
WSAC2012.023	Zervas, Claude	Western Washington University	Western Washington University	Closed	\$13,766.98
WSAC2012.034	Archibald, Jack	Eisenhower High School	Yakima School District	Commission	\$1,000.00
WSAC2012.035	Beyette, Pam	Yakima Valley Technical Skills Center	Yakima School District	Closed	\$38,166.84
WSAC2013.008	Lee, Suzanne	Shorecrest High School	Shoreline School District	Closed	\$58,249.38
WSAC2013.037	Kate Kaman and Joel Erland	Henrietta Lacks Health and Bioscience High School	Evergreen School District	Closed	\$37,185.90
WSAC2013.056	Galvez, Daniel	White Pass Junior-Senior High School	White Pass School District	Commission	\$3,846.61
WSAC2014.003	Tollefson, Kristin	Snohomish High School	Snohomish School District	Pending Closure	\$1,000.00
WSAC2014.004	Zoccola, Susan	Cheney Middle School	Cheney School District	Closed	\$3,100.00
WSAC2014.005	rhiza A+D	Lower Columbia College	Lower Columbia College	Closed	\$19,284.76
WSAC2014.006	John Patkau and Patricia Patkau	University of Washington	University of Washington	Closed	\$61,671.56
WSAC2014.007	Ball-Nogues Studio	Central Washington University	Central Washington University	Closed	\$64,584.45
WSAC2014.008	Hirschkoff, Ben	Valley View Middle School	Snohomish School District	Closed	\$3,000.00
WSAC2014.009	Davis, John	Warden Elementary/Middle/High School	Warden School District	Commission	\$2,000.00
WSAC2014.010	Leverich, Robert	Vashon Island High School	Vashon Island School District	Commission	\$3,742.25
WSAC2014.011	Bruch, Cris	North Seattle College	North Seattle College	Closed	\$23,807.23
WSAC2014.012	Pridgeon, James	Kenmore Junior High School	Northshore School District	Proposal	\$23.12
WSAC2014.013	Carl Bryant and Sandra Bryant	Wapato High School	Wapato School District	Closed	\$52,747.55

Reference No.	Artist	Project Location	Partner Agency	Status	Expenditures
WSAC2014.014	Satow, Heath	Bates Technical College - Central/Mohler Campus	Bates Technical College	Closed	\$45,519.67
WSAC2014.015	Blackstone, Luke	Bellevue College	Bellevue College	Closed	\$29,192.21
WSAC2014.016	Bruce Andersen and Shannon Andersen	Green River College	Green River College	Closed	\$78,521.24
WSAC2014.017	Judith Caldwell and Daniel Caldwell	Selah Middle School	Selah School District	Closed	\$64,143.28
WSAC2014.018	Two Ravens Studio	Seattle Central College	Seattle Central College	Pending Closure	\$24,784.48
WSAC2015.001	Friend Gay, Dixie	Jackson Park Elementary	Central Kitsap School District	Commission	\$5,750.00
WSAC2015.002	Gera Lozano and Werc Alvarez	Davis High School	Yakima School District	Proposal	\$6,860.65
WSAC2015.003	Jean Whitesavage and Nick Lyle	Cascade Middle School	Sedro-Woolley School District	Commission	\$26,338.64
WSAC2015.004	Chabre, Wayne	Jefferson Elementary School	Spokane Public Schools	Closed	\$30,070.15
WSAC2015.005	Rude, Brad	Cascadia Technical Academy	Evergreen School District	Closed	\$26,797.60
WSAC2015.006	Woods, Catherine	Crestline Elementary School	Evergreen School District	Commission	\$25,083.77
WSAC2015.007	Parker, Lucinda	Lake Roosevelt Elementary School	Grand Coulee Dam School District	Closed	\$44,505.96
WSAC2015.008	Stone, Katy	Westview Elementary School	Spokane Public Schools	Closed	\$750.00
WSAC2015.009	Hussey, Aaron	Othello High School	Othello School District	Commission	\$6,422.55
WSAC2015.010	Gardner, Ann	Joel E Ferris High School	Spokane Public Schools	Closed	\$34,163.53
WSAC2015.011	Tim Prentice and David Colbert	Woodland High School	Woodland School District	Closed	\$81,249.39
WSAC2015.014	Kuby, Adam	Clark College	Clark College	Closed	\$10,218.03
WSAC2015.015	Archibald, Jack	Camp Murray	Military Department	Closed	\$1,250.00
WSAC2015.016	Wilbur-Sigo, Andrea	University of Washington	University of Washington	Closed	\$16,627.70
WSAC2016.001	Point, Susan	Olympic College	Olympic College	Proposal	\$827.88
WSAC2016.002	Knowles, Amanda	The Evergreen State College	The Evergreen State College	Closed	\$3,413.76
WSAC2016.003	Knowles, Amanda	The Evergreen State College	The Evergreen State College	Closed	\$3,413.76
WSAC2016.004	Knowles, Amanda	The Evergreen State College	The Evergreen State College	Closed	\$849.12
WSAC2016.005	Knowles, Amanda	The Evergreen State College	The Evergreen State College	Closed	\$969.12
WSAC2016.006	Nakamura, Stuart	South Ridge Elementary	Ridgefield School District	Commission	\$2,889.43
WSAC2016.009	Sorey, Paul	Tahoma High School & Regional Learning Center	Tahoma School District	Commission	\$3,850.00

Reference No.	Artist	Project Location	Partner Agency	Status	Expenditures
WSAC2016.010	Anderson, Tom	Salk Middle School	Spokane Public Schools	Closed	\$719.04
WSAC2016.012	Brother, Beliz	Washington State Patrol - Budget and Fiscal Services, Olympia	Department of Enterprise Services	Proposal	\$96.60
WSAC2016.014	Blackwell, Evan	NEWTECH Skill Center	Spokane Public Schools	Proposal	\$447.20
WSAC2016.015	Benson, Todd	Columbia Basin College	Columbia Basin College	Commission	\$306.00
WSAC2016.016	Robalino, Mauricio	Garfield Elementary	Olympia School District	Commission	\$1,319.12
WSAC2016.018	Reiquam, Peter	Conway K-8	Conway School District	Commission	\$68.32
WSAC2016.019	Ragland, Greg	Irene Reither Elementary	Meridian School District	Commission	\$531.99
WSAC2016.020	Dupille, Michael	Hutton Elementary School	Spokane Public Schools	Commission	\$493.82
WSAC2016.021	Ichikawa, Etsuko	Pullman High School	Pullman School District	Commission	\$329.91
WSAC2016.022	Gahan, Elizabeth	Washington Elementary	Wenatchee School District	Proposal	\$200.04
<b>Total</b>					<b>\$1,002,038.18</b>

This list includes all public art projects receiving any amount of funding during fiscal year 2017 (July 1, 2016 through June 30, 2017). The Expenditures section lists the amount spent during the fiscal year; it does not indicate the final project cost. The Status section includes projects that are installed and completed (“Closed”), in design (“Proposal”), or in fabrication (“Commission”). Please contact AIPP staff for more information on these projects.

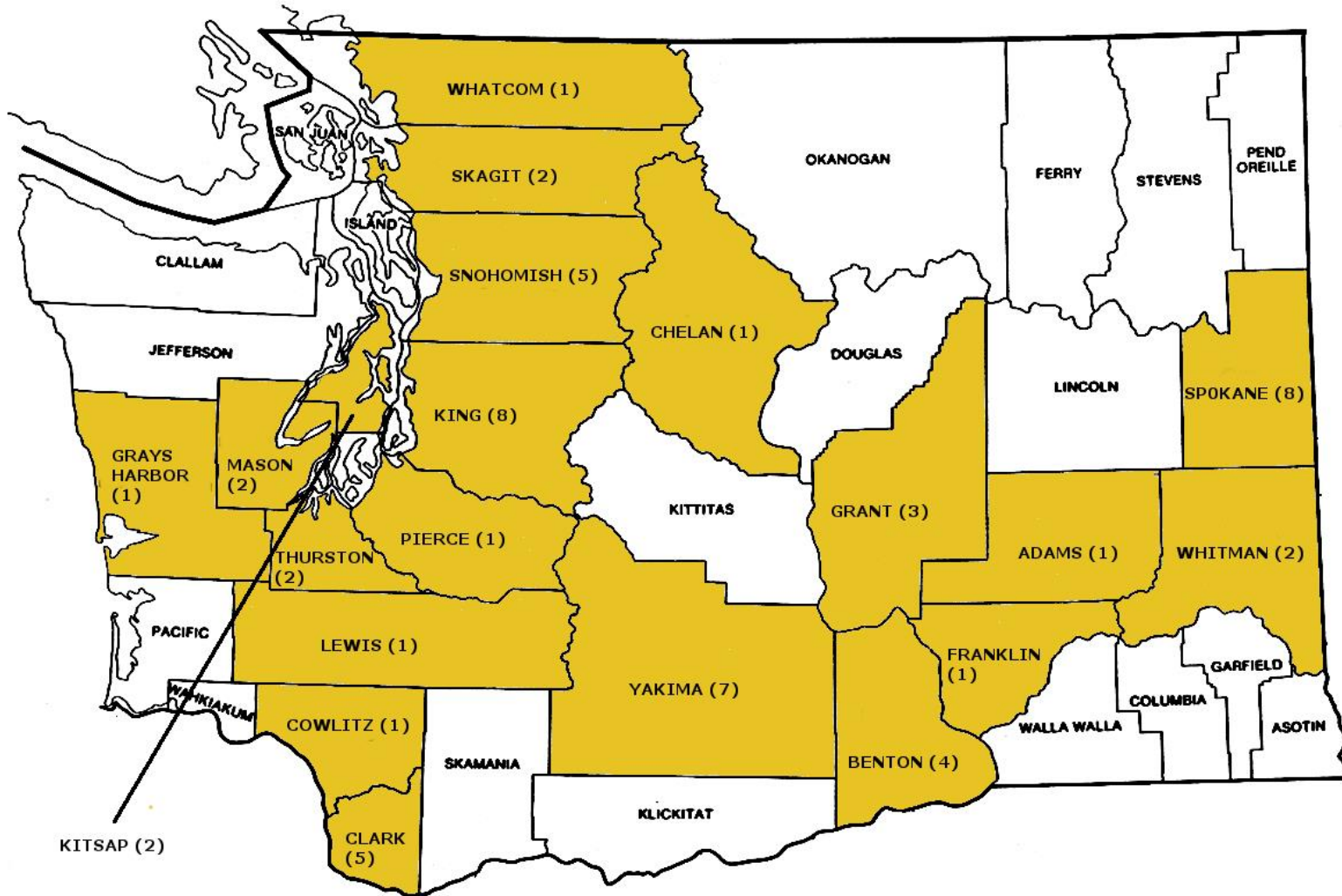
Reference No.	Artist	Project Location	Partner Agency	Status	Expenditures
WSAC2012.034	Archibald, Jack	Eisenhower High School	Yakima School District	Commission	\$52,524.43
WSAC2013.001	Rolstad, Koryn	Port of Walla Walla	Department of Corrections	Closed	\$10,000.00
WSAC2013.037	Kate Kaman and Joel Erland	Henrietta Lacks Health and Bioscience High School	Evergreen School District	Closed	\$12,395.30
WSAC2013.056	Galvez, Daniel	White Pass Junior-Senior High School	White Pass School District	Commission	\$25,592.62
WSAC2014.003	Tollefson, Kristin	Snohomish High School	Snohomish School District	Pending Closure	\$22,593.48
WSAC2014.004	Zoccola, Susan	Cheney Middle School	Cheney School District	Closed	\$29,716.70
WSAC2014.007	Ball-Nogues Studio	Central Washington University	Central Washington University	Closed	\$66,268.69
WSAC2014.008	Hirschkoff, Ben	Valley View Middle School	Snohomish School District	Closed	\$21,173.51
WSAC2014.009	Davis, John	Warden Elementary/Middle/High School	Warden School District	Commission	\$17,373.28
WSAC2014.010	Leverich, Robert	Vashon Island High School	Vashon Island School District	Commission	\$38,612.15
WSAC2014.011	Bruch, Cris	North Seattle College	North Seattle College	Closed	\$55,550.18
WSAC2014.012	Pridgeon, James	Kenmore Junior High School	Northshore School District	Proposal	\$2,600.00
WSAC2014.015	Blackstone, Luke	Bellevue College	Bellevue College	Closed	\$62,169.44
WSAC2014.018	Two Ravens Studio	Seattle Central College	Seattle Central College	Pending Closure	\$22,835.17
WSAC2015.001	Friend Gay, Dixie	Jackson Park Elementary	Central Kitsap School District	Commission	\$33,919.99
WSAC2015.003	Jean Whitesavage and Nick Lyle	Cascade Middle School	Sedro-Woolley School District	Commission	\$18,658.06
WSAC2015.004	Chabre, Wayne	Jefferson Elementary School	Spokane Public Schools	Closed	\$60,818.69
WSAC2015.005	Rude, Brad	Cascadia Technical Academy	Evergreen School District	Closed	\$15,694.59

Reference No.	Artist	Project Location	Partner Agency	Status	Expenditures
WSAC2015.006	Woods, Catherine	Crestline Elementary School	Evergreen School District	Commission	\$20,683.77
WSAC2015.007	Parker, Lucinda	Lake Roosevelt Elementary School	Grand Coulee Dam School District	Closed	\$26,602.52
WSAC2015.008	Stone, Katy	Westview Elementary School	Spokane Public Schools	Closed	\$90,024.46
WSAC2015.009	Hussey, Aaron	Othello High School	Othello School District	Commission	\$39,910.34
WSAC2015.010	Gardner, Ann	Joel E Ferris High School	Spokane Public Schools	Closed	\$61,664.18
WSAC2015.012	Palmer, Erin	Whatcom Community College	Whatcom Community College	Proposal	\$3,127.09
WSAC2015.014	Kuby, Adam	Clark College	Clark College	Closed	\$99,699.66
WSAC2015.015	Archibald, Jack	Camp Murray	Military Department	Closed	\$39,125.00
WSAC2016.001	Point, Susan	Olympic College	Olympic College	Proposal	\$8,572.49
WSAC2016.006	Nakamura, Stuart	South Ridge Elementary	Ridgefield School District	Commission	\$14,453.17
WSAC2016.007	Edwards, Garth	Ridgefield School District	Union Ridge Elementary	Commission	\$4,417.15
WSAC2016.008	Sato, Norie	University of Washington	University of Washington	Commission	\$43,597.14
WSAC2016.009	Sorey, Paul	Tahoma High School & Regional Learning Center	Tahoma School District	Commission	\$19,645.00
WSAC2016.010	Anderson, Tom	Salk Middle School	Spokane Public Schools	Closed	\$39,280.96
WSAC2016.011	Alonso-Rodriguez, Juan	Renton Technical College	Renton Technical College	Pending Closure	\$48,153.44
WSAC2016.012	Brother, Beliz	Washington State Patrol - Budget and Fiscal Services, Olympia	Department of Enterprise Services	Proposal	\$5,225.60
WSAC2016.013	Nakamura, Yuki	The Evergreen State College	The Evergreen State College	Proposal	\$1,545.20
WSAC2016.014	Blackwell, Evan	NEWTECH Skill Center	Spokane Public Schools	Proposal	\$4,602.01
WSAC2016.015	Benson, Todd	Columbia Basin College	Columbia Basin College	Commission	\$39,420.42
WSAC2016.016	Robalino, Mauricio	Garfield Elementary	Olympia School District	Commission	\$14,217.70
WSAC2016.017	Kroupa, Ed	Mullan Road Elementary	Spokane Public Schools	Proposal	\$3,170.53
WSAC2016.018	Reiquam, Peter	Conway K-8	Conway School District	Commission	\$17,886.31
WSAC2016.019	Ragland, Greg	Irene Reither Elementary	Meridian School District	Commission	\$10,486.47
WSAC2016.020	Dupille, Michael	Hutton Elementary School	Spokane Public Schools	Commission	\$36,215.35
WSAC2016.021	Ichikawa, Etsuko	Pullman High School	Pullman School District	Commission	\$26,776.34
WSAC2016.022	Gahan, Elizabeth	Washington Elementary	Wenatchee School District	Proposal	\$3,235.56

Reference No.	Artist	Project Location	Partner Agency	Status	Expenditures
WSAC2016.023	Vexler, Paul	Washington State University - North Puget Sound at Everett	Washington State University	Commission	\$11,403.75
WSAC2016.024	Sze, Sarah	Western Washington University	Western Washington University	Proposal	\$5,481.39
WSAC2016.025	Blomberg, Cecilia	Sacajawea Elementary	Richland School District	Commission	\$23,000.00
WSAC2016.026	Babcock, Matt	North Mason High School	North Mason School District	Commission	\$4,091.72
WSAC2016.027	Paquette, Virginia	Pierce County Skills Center	Bethel School District	Proposal	\$1,880.82
WSAC2016.028	Frymire, William	Alderwood Middle School	Edmonds School District	Proposal	\$6,039.99
WSAC2016.029	Niemi, Ries	North Creek High School	Northshore School District	Proposal	\$2,000.00
WSAC2016.030	Michael Brown and David Cole	Orchard Elementary	Richland School District	Proposal	\$5,090.06
WSAC2016.031	Bienvenu, Micajah	South Seattle College	South Seattle College	Commission	\$6,003.83
WSAC2017.001	Bradbury, Jean	Lewis and Clark Elementary School	Richland School District	Proposal	\$4,083.76
WSAC2017.002	Berger, Julie	Department of Transportation - North Central Region, Wenatchee	Department of Transportation	Proposal	\$1,453.81
WSAC2017.003	Sean Healy and Joe Thurston	Marcus Whitman Elementary	Richland School District	Commission	\$38,898.23
WSAC2017.004	Samuelson, Frank	Silverdale Elementary	Central Kitsap School District	Proposal	\$3,689.88
WSAC2017.005	Hansen, Diane	Olympia Regional Learning Academy	Olympia School District	Proposal	\$1,670.94
WSAC2017.006	Ene Osteraas-Constable and Scott Constable	Pierce College - Fort Steilacoom	Pierce College - Fort Steilacoom	Proposal	\$1,995.70
WSAC2017.007	Mclsaac, Adam	Lake Stickney Elementary	Mukilteo School District	Proposal	\$186.18
WSAC2017.008	Shaw, Benson	Eastern Washington Regional Archives	Office of the Secretary of State	Closed	\$20,672.00
WSAC2017.009	Hirsch, Alex	Auburn High School	Auburn School District	Proposal	\$306.65
WSAC2017.010	Averbuch, Ilan	Central Washington University	Central Washington University	Proposal	\$3,844.16
WSAC2017.011	Bourdette, Christine	Hazel Wolf K-8	Seattle Public Schools	Proposal	\$875.00
WSAC2017.012	Alexis Gregg and Tanner Coleman	Colton School	Colton School District	Proposal	\$1,885.49
WSAC2017.013	Law, Horatio	Marie Curie STEM Elementary	Pasco School District	Proposal	\$5.00
WSAC2017.014	Rogers, John	Centralia College	Centralia College	Commission	\$7,574.70
WSAC2017.015	Neilson, Rob	Royal Intermediate	Royal School District	Proposal	\$1,087.74
WSAC2017.016	Friday, Dan	Getchell High School	Marysville School District	Closed	\$11,635.93

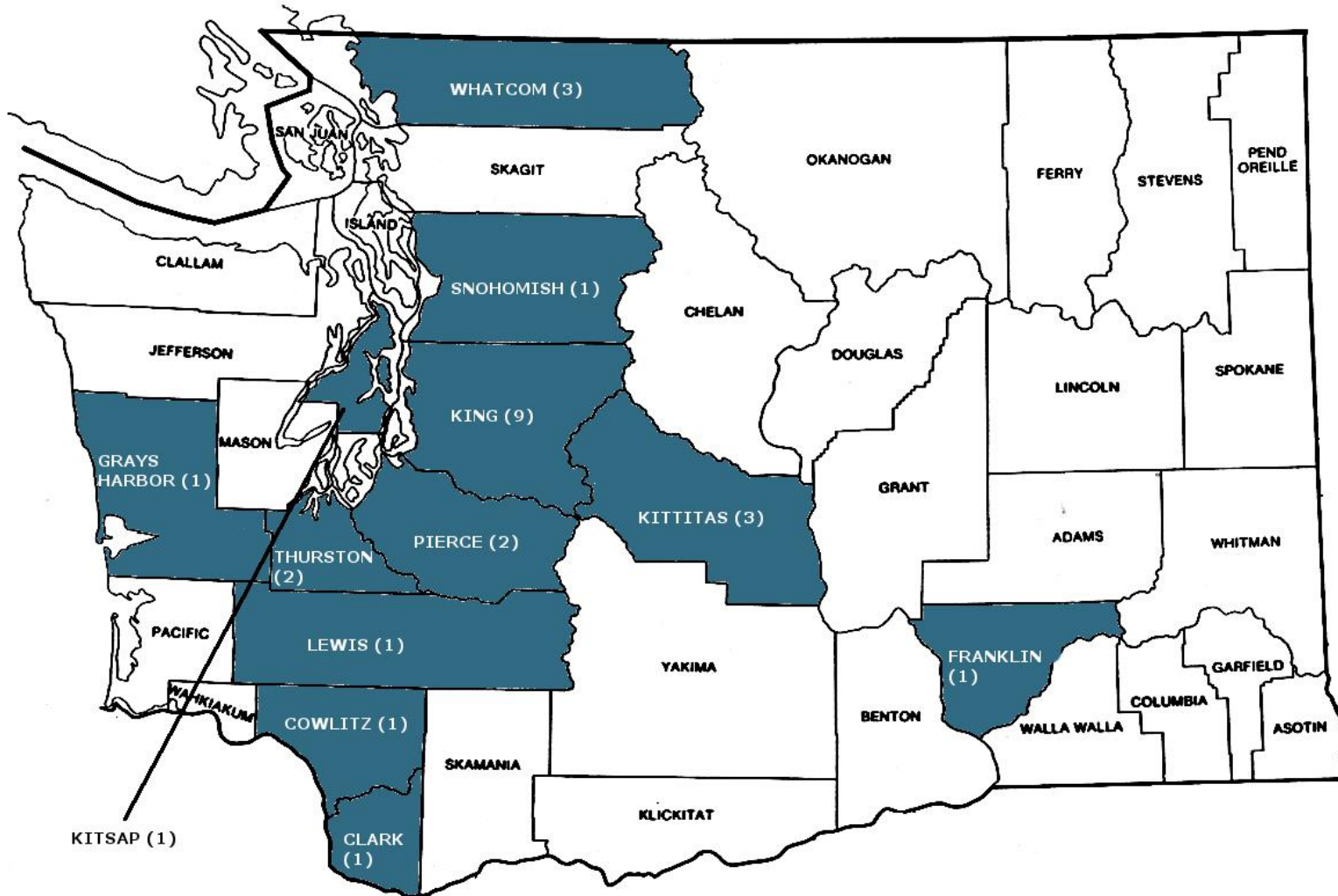
Reference No.	Artist	Project Location	Partner Agency	Status	Expenditures
WSAC2017.017	Arreguin, Alfredo	Getchell High School	Marysville School District	Closed	\$11,635.93
WSAC2017.018	Thompson, Cappy	Getchell High School	Marysville School District	Closed	\$11,635.94
WSAC2017.019	Dingus, Marita	Getchell High School	Marysville School District	Closed	\$7,269.94
WSAC2017.020	Eisenhour, David	Ocosta Elementary	Ocosta School District	Proposal	\$195.38
WSAC2017.021	Brown, Kim	Hawkins Middle School	North Mason School District	Proposal	\$412.66
WSAC2017.022	Beecher, Ross Palmer	Washington Elementary	Sunnyside School District	Proposal	\$1,600.00
WSAC2017.023	Wu, Sumi	Genesee Hill School	Seattle Public Schools	Proposal	\$1,801.80
WSAC2017.024	Medwedeff, John	Central Washington University	Central Washington University	Closed	\$35,876.00
WSAC2017.025	Dillehay, Kyle	Yakima Valley Technical Skills Center - Sunnyside	Sunnyside School District	Proposal	\$1,500.00
<b>Total</b>					<b>\$1,527,018.52</b>

Artwork Expenditures FY16-17 | Project Distribution by County | K-12 Public Schools

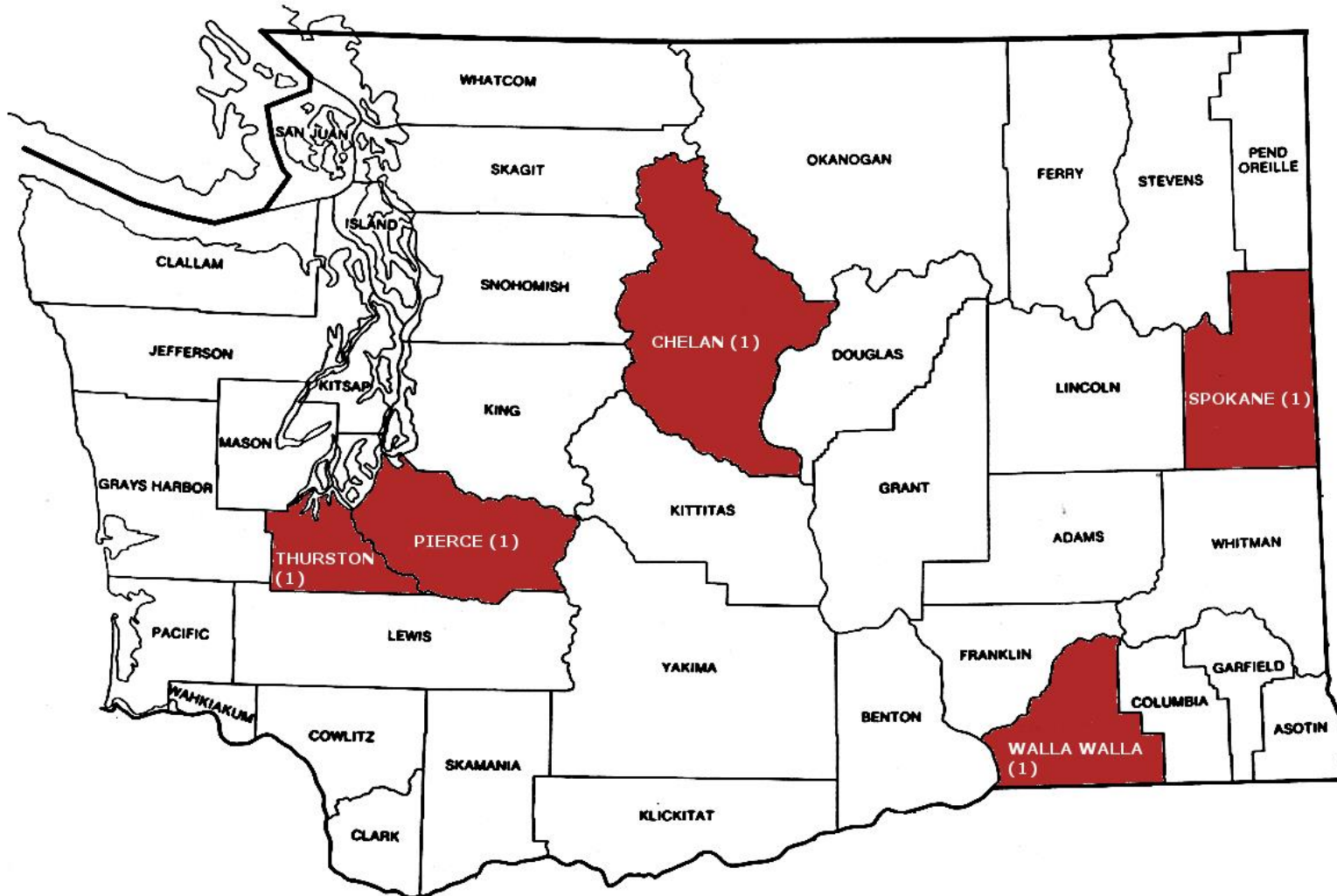




Artwork Expenditures FY16-17 | Project Distribution by County | Higher Education



# Artwork Expenditures FY16-17 | Project Distribution by County | State Agencies



3.4

AIPP Administrative Costs  
FY 2016-17

# FY2016-17 AIPP Program Administrative Costs

## Overview

The Art in Public Places program (AIPP) manages the acquisition and care of artworks in the State Art Collection located in public schools, community and technical colleges, public universities, and state agencies throughout Washington.

Funding for the administrative costs of AIPP is calculated as a portion of Capital Budget public art allocations (RCW 43.17.200, 28B.10.027, and 28A.335.210). As per the 2015-17 Capital Budget, and anticipated for 2017-19, at least eighty-five percent of capital expenditures are to be spent on artwork acquisitions; the remaining fifteen percent is reserved for program administration.

Administrative costs do not include the salaries and benefits for the collections care staff (collections manager and conservation technician), who are funded through the agency's general fund, or the My Public Art Portal staff (project manager and two researchers), who were funded by the 2015-17 OCIO technology grant. Collection care costs—maintenance and conservation—are funded through capital appropriations, and are currently limited to \$100,000 per biennium. For more information relating to collections costs, please refer to the section titled “Collection Care” in this report; My Public Art Portal costs can be found under “My Public Art Portal.”



Sonja Blomdahl completing her installation of *Synergy*, 2014, for Westwood Middle School, Cheney.

## Biennial Expenditures for AIPP Administration

Object	Description	FY16	FY17	Total
A	Salary - Staff (program manager, admin. assistant, and 2 project managers <sup>**</sup> )	167,660	226,858	394,518
B	Benefits - Staff (3-4 FTEs, from above)	64,401	86,109	150,510
C	Professional Service Contracts (advisory panels)	5,257	460	5,717
E	Goods and Other Services (prof. development, communications, software)	18,616	22,540	41,156
G	Travel (statewide, for 2 project managers)	16,028	17,417	33,445
J	Noncapitalized Assets (equipment)	1,476	0	1,476
		<b>273,438</b>	<b>353,384</b>	<b>626,822</b>

<sup>\*\*</sup> 2nd project manager began employment on 6/1/16; FY16 includes one month of his salary

## AIPP Acquisitions

ArtsWA’s public art program was established in 1974 by the state legislature, who declared it to be “a policy of this state that a portion of appropriations for capital expenditures be set aside for the acquisition of works of art to be placed in public buildings or lands.”

Through an established process that is guided by local decision-making, AIPP brings artwork into public spaces where people study, work, and gather. AIPP has overseen the acquisition of more than 4,600 pieces in the State Art Collection, sited in 1,200 locations throughout the entire state. AIPP partners with public schools, state colleges, public universities, and state agencies to acquire and care for the artwork in their facilities and on their campuses. These partners commit to provide general maintenance of artworks, while AIPP is responsible for the inventory, restoration, and conservation of works in the State Art Collection.

Public art projects contribute to a prosperous economy, enlivening and enriching the built environment, while providing artists and other local professionals (metal fabricators, concrete contractors, structural engineers, installers, etc.) with meaningful employment.

Investment in site-responsive artworks, guided by local decision-making, make our communities more vibrant and livable. Public art engenders a sense of place, of community, of heritage and belonging.



Bruce Anderson and an assistant installing Bruce and Shannon Anderson’s sculpture, *Inclined Plane*, part of the series *Simple Machines* (2016) for Green River College, in Auburn.

3.5

AIPP Collection Care Costs  
FY 2016-17

## Collection Care

### Overview

The 4,600 artworks that comprise the State Art Collection are located at approximately 1,200 sites throughout Washington, under the day-to-day care of ArtsWA's partner agencies.

ArtsWA is responsible for collection care—including artwork inventory, conservation/restoration, copyright management, record-keeping, and public presentation—as funded by the Legislature.

Conservation—a key facet of collection care—is conducted by ArtsWA's full-time conservation technician and contractors with specialized knowledge. Each plays a critical role in caring for the State Art Collection; staff perform more conservation services at a lower unit cost and contractors provide specialized expertise.

The primary source of funding for contracted conservation activities has been capped at \$100,000 per biennium for a decade. This amount is inadequate to the needs of the State's \$34 million investment in cultural assets, representing more than 40 years of our heritage. To keep better pace with growing needs, ArtsWA requested an increase in the cap for the 2017-2019 biennium. Based on the draft Capital Budget, that increase is anticipated at \$150,000 for conservation per biennium.

### Conservation Activities

ArtsWA's conservation activities range from purchasing plaques that ensure artwork identification to conservation-grade reframing; from meticulous removal of acid from a work-on-paper to major, multi-month artwork repairs of complex outdoor sculpture. Their costs are similarly diverse (from \$300 for reframing to \$30,000 for a complex conservation project requiring a team of professionals).

These activities are undertaken by a combination of ArtsWA's full-time conservation technician and contracted conservators with specialized knowledge. Decisions about conservation activities are based on:

- *Availability of in-house expertise:* Is the scope of work within the skillset of ArtsWA's conservation technician?



When strategic, ArtsWA initiates artwork maintenance. For example, David Gallagher's *Segmental Sculpture* was installed at Green River Community College in 1977 (top) and though maintenance is—by Interagency Agreement—the responsibility of the College, it requires materials expertise best provided by ArtsWA (bottom).

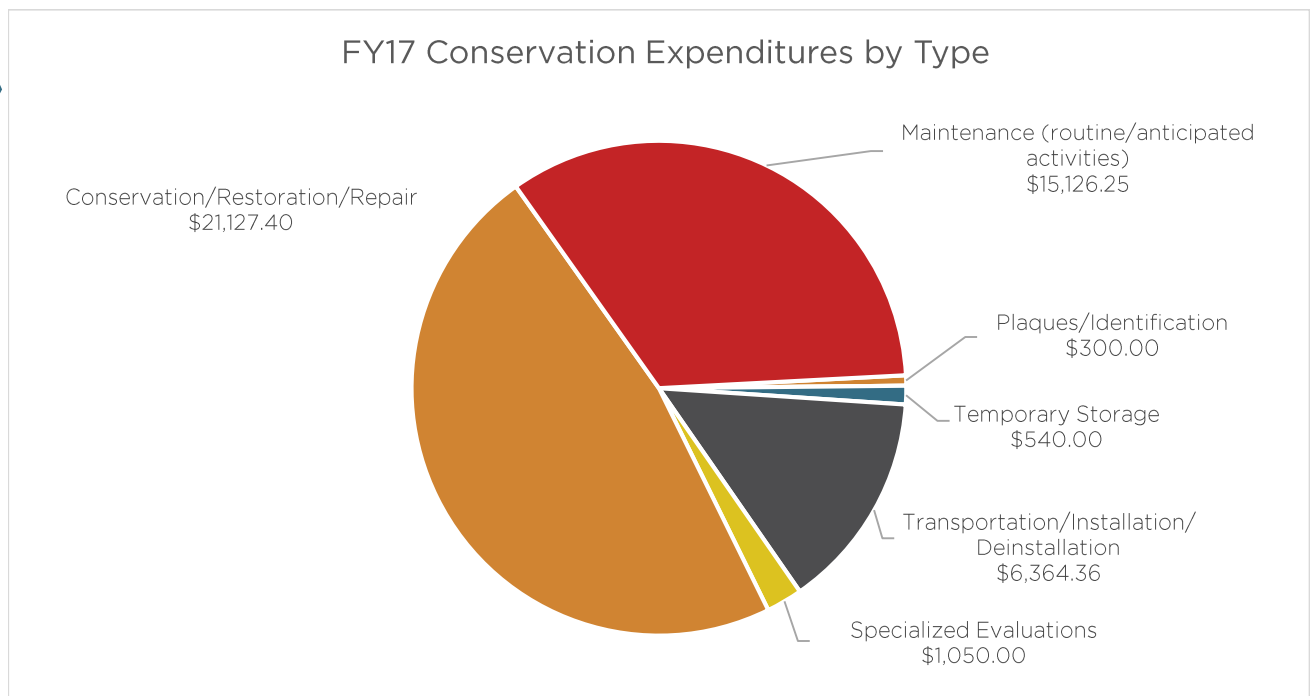
At this time however, ArtsWA does not have the resources to take the lead on most maintenance activities, which can lead to benign neglect or damage from improper maintenance.

- *Duration of project:* Does the project require a lengthy commitment of time, creating significant additional expense when contracting?
- *Geographic location:* Is it cost effective to send a contracted conservator—most often from Seattle—to Washington’s remote northeast or Olympic Peninsula, for example?

### Biennial Expenditures for Collection Care

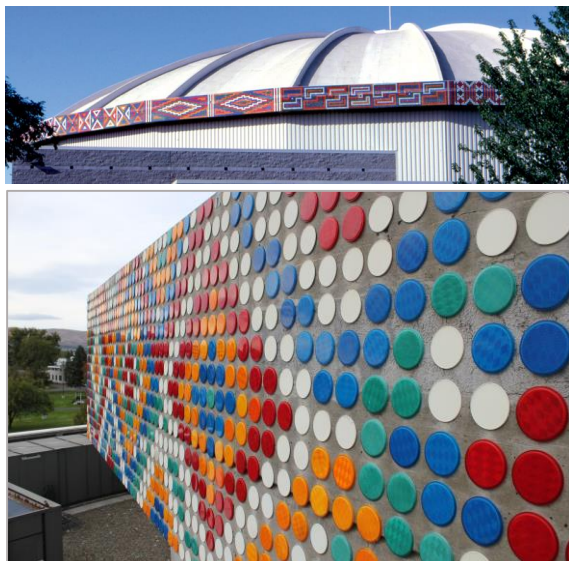
The source of all monies expended below is the State General Fund, except for expenditures under Sub-object JM. As per the enacted 2015-17 Capital Budget, artwork acquisition funds may be expended for artwork maintenance or conservation up to \$100,000 per biennium.

Object	Description	FY16	FY17
A	Salary - Staff (art collections manager & conservation technician)	97,462	101,317
B	Benefits - Staff (art collections manager & conservation technician)	38,475	39,887
AL	Salary - Work Study Student Employees	6,131	8,742
SA/SB	Salary - Work Study Student Employees (reimbursement)	(3,597)	(4,313)
C	Professional Service Contracts (advisory panels and editing services)	0	663
E	Goods and Other Services (workshop rental and general goods and services not specific to the care of individual artworks)	10,123	13,035
E (TMO)	Goods and Other Services (art collections management database)	5,393	4,865
G	Travel (primarily conservation services statewide)	7,496	5,597
JA	Capital Outlays (tools/equipment for collection care and art conservation)	960	5,666
JM	*Artwork-specific Collection Care and Conservation Services (specialized, contracted services). See category detail in the pie chart below.	55,492	44,508
	Total	\$217,965	\$219,967





## Conservation Priorities



Dick Elliott's *Circle of Light* (top, in 1992) is comprised of 48,480 reflectors and, at 880 feet long, surrounds Yakima's Sundome. The artwork is highly-visible and beloved, but after 25 years of heavy UV exposure, it needs major repair, including replacement of 1/3 of its reflectors. Repair is estimated at four months of staff time (plus travel, equipment rental, and materials). With only a single staff person dedicated to conservation across the state, ArtsWA has not been able undertake this important project.

*ArtsWA's conservation funding does not meet the needs of the aging State Art Collection. At \$22/artwork per biennium (based on legislated conservation spending cap of \$100,000 of Capital Budget funds), the funds must be used for urgent and timely projects, but are not adequate for anticipatory efforts or thoughtful, long-term care strategies.*

Established in 2006, the cap on conservation expenditures from the Capital Budget does not include a provision for increase over time, either as related to needs and priorities, or with acknowledgement of an aging collection combined with inflation. It is with this in mind that ArtsWA requested an increase to \$200,000 for the 2017-2019 biennium. The draft Capital Budget includes a smaller increase to \$150,000. Similarly, conservation of the Collection was not funded at all until the mid-1990s, when the Collection was already twenty years old, so much of the needed work represents a backlog in care.

The Collection is sited in highly active public spaces where the value of access to original artwork is prioritized, sometimes at the expense of

preservation. To most effectively use limited conservation funds to protect this cultural asset from deterioration, ArtsWA's collections care activities emphasize:

1. **Preventive conservation activities** such as evaluating artwork materials and fabrication methods during the artwork acquisition phase.
2. **Conservation priorities stated in our collections management policy** ([ArtCare](#)). The policy prioritizes public safety, needed artwork relocation (often initiated by construction), value of an artwork to the partner agency, and artistic merit.

*Maintenance is the missing link in this strategy.* Maintenance is the most effective preventive conservation method: effective art maintenance prevents the need for more costly and invasive conservation, it reduces the loss of critical cultural assets, and it ensures that artworks reflect well on our state.

ArtsWA's partner agencies—the K-12 public schools, colleges, universities, and state agencies that host State Art Collection works—are, by Interagency Agreement, responsible for the maintenance of artworks sited in their facilities. Sometimes these activities are as simple as dusting, but often, artworks require specialized skillsets not common within partner agencies, such as bronze waxing or conservation-grade reframing. When the skills needed are outside of typical facilities activities, artworks suffer from benign neglect or are damaged by improper maintenance.

When strategic, ArtsWA initiates maintenance. At this time however, ArtsWA does not have the resources to take the lead on most maintenance activities, which means that they often remain undone.

## Priority Resource Needs

ArtsWA continues to evolve its collections management practices to improve the care of the Collection. However, without additional resources, this important state asset will continue to deteriorate. The most critical next steps—informed by third party assessment, strategic planning efforts, and best practices in the field of public art—follow:

1. **Increase conservation/collection care staffing levels:** Staff collection care work is paid at a lower rate than contracted conservation services, even when including salary, benefits, tools, equipment, and travel costs. ArtsWA’s staff conservation technician position costs approximately \$40 per hour compared to \$125 per hour for contracted conservators. And while contracted services will continue to play a critical role in the care of the Collection—ArtsWA staff cannot possess the comprehensive expertise needed to care for the large and varied Collection—staff work is an efficient way to manage needs across the state.

Staff collection care work is paid at a lower rate (\$40/hour) than contracted conservation services (\$125/hour), even when including salary, benefits, tools, equipment, and travel costs.

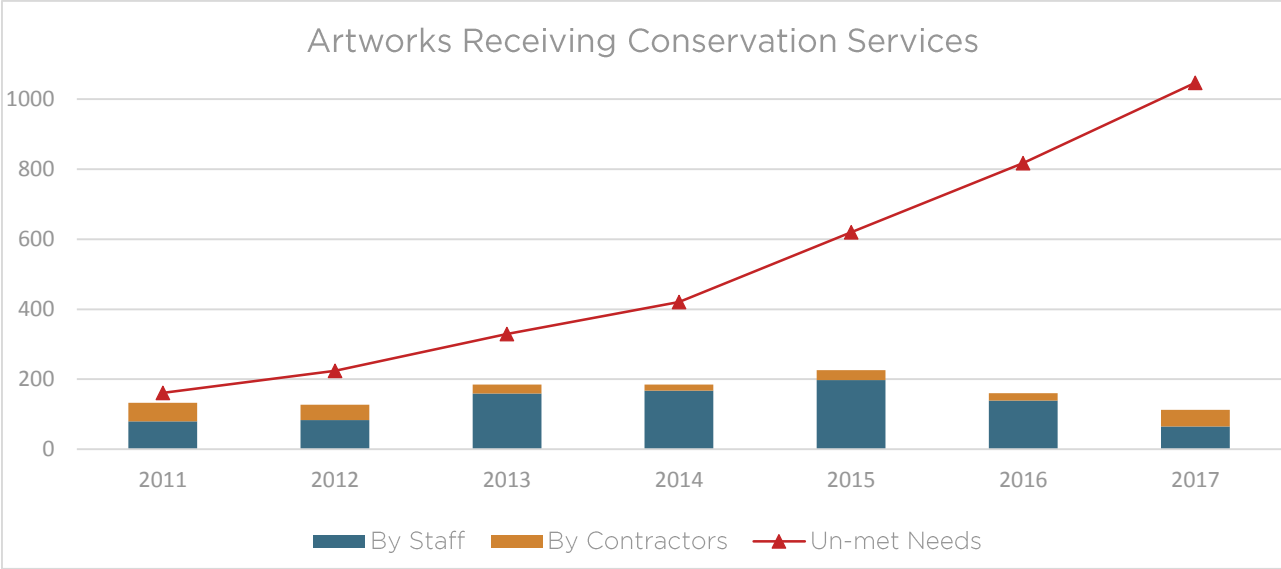
2. **Monitor efficacy of (anticipated) conservation funding cap increase.**

ArtsWA requested an increase to the conservation funding cap in the 2017-2019 Capital Budget. Draft budgets include an increase to \$150,000 per biennium. ArtsWA will monitor the efficacy of this increase and will work with OFM should the increased amount still be insufficient to meet Collection needs.

Increasing funds for conservation by raising the cap that restricts conservation expenditures from the Capital Budget impacts artwork acquisitions; funding for conservation is currently taken from funding dedicated to acquiring new artwork. However, *it is also budget neutral—requiring no additional State General Funds—and could therefore be implemented with little complexity.* Much of any funding increase will be focused on preventive activities such as artwork maintenance.



Field Worker Jennifer Myers examines Alfredo Arreguin's painting *Jungla Encantada* (1995) at Department of Ecology in Lacey. Jennifer's examination of half of the State Art Collection illuminated unmet needs across the State.



With current resources, ArtsWA staff and contracted conservators are unable to impact more than approximately 200 artworks annually, so unmet needs continue to grow (see red line).

**Ongoing Considerations**

The State Art Collection is a valuable cultural asset that enhances our public spaces and reflects who we are as Washingtonians. Its beauty and significance are also part of the complexity of its care. Artworks are located across Washington, from rainforest to desert, from salt air to freeze/thaw zone. As the Collection ages, it becomes an even more valued reflection of our shared history *and* presents a greater need for maintenance and repair. Similarly, as the Art in Public Places program and the field of public art mature, we are more successful at gathering information about the state of the Collection, but that also means we know more about problems that need to be addressed. Care needs, once identified, can less easily be ignored or deferred.

3.6

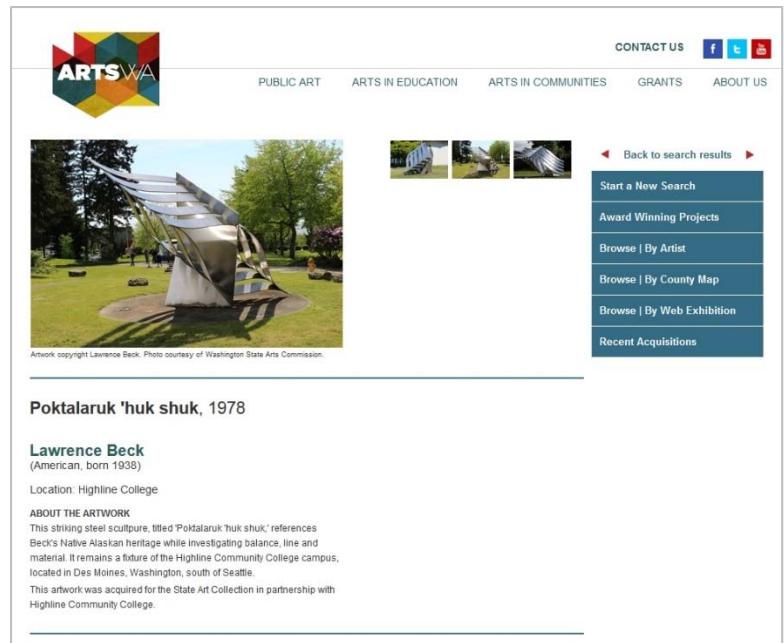
My Public Art Portal Costs  
FY 2016-17

# My Public Art Portal

## Overview

My Public Art Portal is a dynamic, web-based database of artwork in the State Art Collection, designed with the public in mind. As of June 30, 2017, the Portal includes more than 2,100 State Art Collection works and related maps, images, and context about these vital state assets.

The Portal launched as a pilot project in early 2015 with just 10% of the Collection. Its continued and expedited development was supported through the Office of the Chief Information Officer's (OCIO) Information Technology Pool through June 2017. This afforded staff the opportunity to undertake a thorough physical inventory of the entire State Art Collection for the first time since AIPP's inception in 1974, ensuring that the information presented online via My Public Art Portal is accurate, complete, and supported by current photographic documentation. AIPP's on-going development work includes verifying artwork locations and taking current, high-resolution photography; researching, geo-locating, and writing about artworks; and scanning historic images to improve the quality and quantity of information available to the public. New content was added to the Portal on a regular, weekly rate of approximately 100 artworks per month from May 2016 to June 2017.



A screenshot of the *My Public Art Portal* interface shows *Poktalaruk 'huk shuk* (1978) by Lawrence Beck at Highline College, Des Moines. The Portal interface also includes a Google-linked map indicating the artwork location and geo-coordinates (not visible in this image).

## Biennial Expenditures for My Public Art Portal

Object	Description	FY16	FY17
A	Salary - Staff (Collections Manager oversight, Portal Project Manager, Writer-Researcher, and Art Inventory Field Worker)	46,559	116,794
B	Benefits - Staff (see above)	19,324	57,891
C	Professional Service Contracts	1,200	10,550
E	Goods and Other Services	8,240	20,843
G	Travel (primarily for the physical inventory work)	924	13,523
J	Capital Outlays (tools and equipment for the physical inventory work)	8,872	98
<b>Total</b>		<b>\$85,119</b>	<b>\$219,699</b>

**Next Steps in FY18:**

Usability and user analysis that will guide the next wave of web interface development, ensuring that My Public Art Portal is a relevant and engaging resource for the public.

Outreach to K-12 educators to maximize My Public Art Portal’s potential as a teaching tool and resource.

Ongoing web content development at the rate of 100 new artworks uploaded to My Public Art Portal per month.



*Carpenters* (1977) by celebrated African American artist Jacob Lawrence is among the over 2,100 artworks on My Public Art Portal. *Carpenters* is located at Spokane’s Hamblen Elementary School.

ArtsWA was successful in securing \$305,000 in funding from the legislature for the 2017-2019 biennium to continue developing My Public Art Portal. Two staff (1.5 FTE) are dedicated to the project, which aims to publish all the artworks to the Portal by June 30, 2019.

3.7

State Art Collection under Contract  
(as of 8/10/17)



WASHINGTON STATE  
ARTS COMMISSION

## STATE ART COLLECTION

Currently Under Contract  
As of August 10, 2017

The list below, sorted by county, reflects public art projects that are either in design (“Proposal”) or are in fabrication (“Commission”). The Artwork Budget is the total amount available at the beginning of the project after AIPP administration and collection care costs have been deducted from the original allocation. The Artwork Budget is inclusive of design, engineering, fabrication, subcontractors, transportation, installation, and other related costs. Please contact AIPP staff for more information on these projects.

### Adams County

---

Partner Agency: Othello School District  
Hosting Site: Othello High School  
Employed Artist: Aaron Hussey  
Project Status: Commission  
Artwork Budget: \$ 77,500.00

### Benton County

---

Partner Agency: Richland School District  
Hosting Site: Sacajawea Elementary  
Employed Artist: Cecilia Blomberg  
Project Status: Commission  
Artwork Budget: \$ 65,000.00

Partner Agency: Richland School District  
Hosting Site: Marcus Whitman Elementary  
Employed Artist: Sean Healy and Joe Thurston  
Project Status: Commission  
Artwork Budget: \$ 60,000.00

### Chelan County

---

Partner Agency: Wenatchee School District  
Hosting Site: Washington Elementary  
Employed Artist: Elizabeth Gahan  
Project Status: Proposal  
Artwork Budget: \$ 41,999.99



## Clark County

---

Partner Agency: Evergreen School District  
Hosting Site: Crestline Elementary School  
Employed Artist: Catherine Woods  
Project Status: Commission  
Artwork Budget: \$ 77,500.00

Partner Agency: Union Ridge Elementary  
Hosting Site: Ridgefield School District  
Employed Artist: Garth Edwards  
Project Status: Commission  
Artwork Budget: \$ 45,000.00

Partner Agency: Ridgefield School District  
Hosting Site: South Ridge Elementary  
Employed Artist: Stuart Nakamura  
Project Status: Commission  
Artwork Budget: \$ 45,000.00

## Franklin County

---

Partner Agency: Columbia Basin College  
Hosting Site: Columbia Basin College  
Employed Artist: Todd Benson  
Project Status: Commission  
Artwork Budget: \$ 46,280.25

## Grant County

---

Partner Agency: Warden School District  
Hosting Site: Warden Elementary/Middle/High School  
Employed Artist: John Davis  
Project Status: Commission  
Artwork Budget: \$ 60,000.00

## King County

---

Partner Agency: Northshore School District  
Hosting Site: Kenmore Junior High School  
Employed Artist: James Pridgeon  
Project Status: Proposal  
Artwork Budget: \$ 37,380.00

Partner Agency: Vashon Island School District  
Hosting Site: Vashon Island High School  
Employed Artist: Robert Leverich  
Project Status: Commission  
Artwork Budget: \$ 125,000.00

Partner Agency: Tahoma School District  
Hosting Site: Tahoma High School & Regional Learning Center  
Employed Artist: Paul Sorey  
Project Status: Commission  
Artwork Budget: \$ 60,000.00

Partner Agency: University of Washington  
Hosting Site: University of Washington  
Employed Artist: Norie Sato  
Project Status: Commission  
Artwork Budget: \$ 123,507.12

## Kitsap County

---

Partner Agency: Central Kitsap School District  
Hosting Site: Jackson Park Elementary  
Employed Artist: Dixie Friend Gay  
Project Status: Commission  
Artwork Budget: \$ 125,000.00

Partner Agency: Olympic College  
Hosting Site: Olympic College  
Employed Artist: Susan Point  
Project Status: Proposal  
Artwork Budget: \$ 146,300.43

## Lewis County

---

Partner Agency: White Pass School District  
Hosting Site: White Pass Junior-Senior High School  
Employed Artist: Daniel Galvez  
Project Status: Commission  
Artwork Budget: \$ 50,000.00

## Skagit County

---

Partner Agency: Sedro-Woolley School District  
Hosting Site: Cascade Middle School  
Employed Artist: Jean Whitesavage and Nick Lyle  
Project Status: Commission  
Artwork Budget: \$ 70,000.00

Partner Agency: Conway School District  
Hosting Site: Conway K-8  
Employed Artist: Peter Reiquam  
Project Status: Commission  
Artwork Budget: \$ 55,000.00

## Spokane County

---

Partner Agency: Spokane Public Schools  
Hosting Site: NEWTECH Skill Center  
Employed Artist: Evan Blackwell  
Project Status: Proposal  
Artwork Budget: \$ 40,000.00

Partner Agency: Spokane Public Schools  
Hosting Site: Mullan Road Elementary  
Employed Artist: Ed Kroupa  
Project Status: Proposal  
Artwork Budget: \$ 49,999.99

Partner Agency: Spokane Public Schools  
Hosting Site: Hutton Elementary School  
Employed Artist: Michael Dupille  
Project Status: Commission  
Artwork Budget: \$ 49,999.99

## Thurston County

---

Partner Agency: Olympia School District

Hosting Site: Garfield Elementary

Employed Artist: Mauricio Robalino

Project Status: Commission

Artwork Budget: \$ 40,000.00

Partner Agency: The Evergreen State College

Hosting Site: The Evergreen State College

Employed Artist: Yuki Nakamura

Project Status: Proposal

Artwork Budget: \$ 46,114.71

Partner Agency: Department of Enterprise Services

Hosting Site: Washington State Patrol - Budget and Fiscal Services, Olympia

Employed Artist: Beliz Brother

Project Status: Proposal

Artwork Budget: \$ 232,260.42

## Whatcom County

---

Partner Agency: Whatcom Community College

Hosting Site: Whatcom Community College

Employed Artist: Erin Palmer

Project Status: Proposal

Artwork Budget: \$ 86,487.50

Partner Agency: Meridian School District

Hosting Site: Irene Reither Elementary

Employed Artist: Greg Ragland

Project Status: Commission

Artwork Budget: \$ 84,976.54

## Whitman County

---

Partner Agency: Pullman School District

Hosting Site: Pullman High School

Employed Artist: Etsuko Ichikawa

Project Status: Commission

Artwork Budget: \$ 70,000.00

Partner Agency: Washington State University

Hosting Site: Washington State University - North Puget Sound at Everett

Employed Artist: Paul Vexler

Project Status: Commission

Artwork Budget: \$ 161,500.00

## Yakima County

---

Partner Agency: Yakima School District

Hosting Site: Eisenhower High School

Employed Artist: Jack Archibald

Project Status: Commission

Artwork Budget: \$ 76,082.56

Partner Agency: Yakima School District

Hosting Site: Davis High School

Employed Artist: Gera Lozano and Werc Alvarez

Project Status: Proposal

Artwork Budget: \$ 80,000.00