

# Regional Mobility Grant Recommended Project List for 2015-2017

**Lynn Peterson**  
Secretary of Transportation

**Mark Eldridge**  
Regional Mobility Program Manager

**Brian Lagerberg**  
Public Transportation Director



# Regional Mobility Grants

## Four-Year Continuing Projects

\$14,456,329 of the 2015-2017 funds will be allocated to continuing, 2013-2015 projects. There are nine continuing projects.

## New Grant Applications

During the 2015-2017 grant award cycle, 27 new grant applications were submitted. Fourteen applications were from first-time applicants. Four first time applicants scored above the \$40 million line, and nine scored above the \$50 million line.

**The grant amounts shown for each application are for the 2015-2017 biennium only.** Some four year applications may request additional funds in the 2017-2019 biennium.

# 2015-2017 Application Evaluation Process and Criteria

## Process

Perform criterion calculations

Distribute information to independent scoring committee

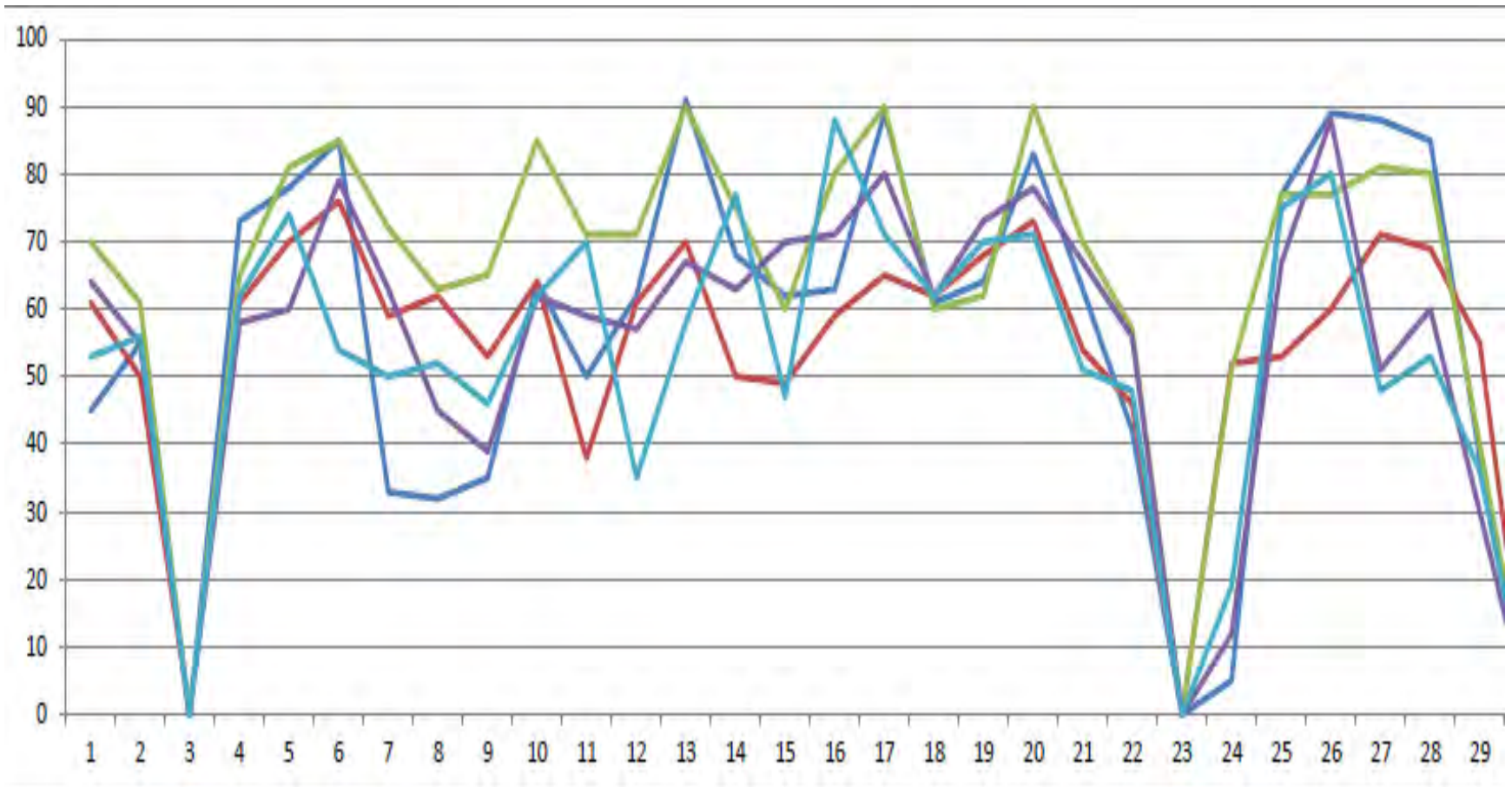
Compile information and distribute to the Legislature

## Criteria

Readiness to proceed	15 points
Impact on congested corridors	30 points
System integration	30 points
Cost effectiveness	15 points
<u>Greenhouse gas reduction policy</u>	<u>10 points</u>
Total possible	100 points

Agency	Project Title	Project Type	2015-2017 Request	2015-2017 Running Total	2017-2019 Request	2017-2019 Running Total	Total Request	Tab
KCM	I-405 Corridor Managing Demand	TDM	1,456,032	1,456,032				
Intercity Transit	Tumwater/Dupont/Lakewood Express	OP	1,374,648	2,830,680				
Intercity Transit	Olympia-Seattle Express Bus Service	OP	640,000	3,470,680				
KCM	Rapid Ride F Line Service	OP	1,547,100	5,017,780				
Pierce Transit	SR 7/Pacific Avenue Peak Hour Service Expansion	OP	1,263,549	6,281,329				
Spokane Transit	Central City Line	CN	1,700,000	7,981,329				
Community Transit	Mukilteo Park and Ride Plus	CN	2,680,000	10,661,329				
Kitsap Transit	SR 305 Interchange Improvements	CN	1,525,000	12,186,329				
City of Tukwila	Urban Center Pedestrian Bridge	CN	2,270,000	14,456,329				
Sound Transit/Community Transit	High Capacity Double Decker Bus Project	EV	4,000,000	18,456,329	0	0	4,000,000	17
City of Kent	Transit Center 1st Ave N Parking (W Smith to W James Street)	CN	272,000	18,728,329	0	0	272,000	20
KCM	SR 522 and I-5S Project	OP	1,736,810	20,465,139	1,932,190	1,932,190	3,669,000	26
Sound Transit	Sumner Station Access Improvements	CN	3,000,000	23,465,139	2,000,000	3,932,190	5,000,000	6
Community Transit	Seaway Transit Center Swift II BRT	CN	3,000,000	26,465,139	3,800,000	7,732,190	6,800,000	13
City of Mukilteo	Multimodal Pedestrian Bridge	CN	527,480	26,992,619	2,109,920	9,842,110	2,637,400	5
C-Tran	Fisher's Landing Transit Center South Parking Expansion	CN	2,848,715	29,841,334	0	9,842,110	2,848,715	16
KCM	Route 245 Corridor Speed and Reliability Improvements	CN	2,192,000	32,033,334	0	9,842,110	2,192,000	25
KCM	Park and Ride Efficiency and Access Project	TDM	1,040,000	33,073,334	1,555,000	11,397,110	2,595,000	28
KCM	I-90 Manage Demand	TDM	2,880,000	35,953,334	0	11,397,110	2,880,000	27
Jefferson Transit	SR 20/Four Corners Road Park and Ride	CN	1,040,000	36,993,334	0	11,397,110	1,040,000	19
Grant Transit	GTA Multimodal Transit Center	CN	1,598,400	38,591,734	0	11,397,110	1,598,400	10
City of Tacoma	Tacoma Link Expansion Phase 1	CN	2,500,000	41,091,734	2,500,000	13,897,110	5,000,000	14
Pierce Transit	SR 7/Pacific Ave Service Expansion	OP	2,320,704	43,412,438	2,320,704	16,217,814	4,641,408	4
Link Transit	Wenatchee Riverfront Shuttle	OP	1,260,000	44,672,438	1,260,000	17,477,814	2,520,000	18
Mason Transit	Regional Express Commuter Bus Service	OP	1,316,946	45,989,384	452,113	17,929,927	1,769,059	21
Pullman Transit	Two 40 foot Electric Hybrid buses	EV	1,056,000	47,045,384	0	0	1,056,000	1
City of Fife	Bus shelter Installation	CN	75,200	47,120,584	0	0	75,200	11
Spokane Transit	West Plains Transit Center	CN	1,740,000	48,860,584	6,960,000	6,960,000	8,700,000	15
Grays Harbor Transit	Run-cutting software purchase	OP	56,000	48,916,584	0	6,960,000	56,000	12
SDOT	Broadway Streetcar Extension	CN	4,000,000	52,916,584	0	6,960,000	4,000,000	2
Town of Concrete	Park and ride	CN	476,800	53,393,384	0	6,960,000	476,800	7
Kittitas County	I-90 Exit 78 park and ride	CN	223,000	53,616,384	0	6,960,000	223,000	8
Mason Transit	Park and ride development	CN	9,334,839	62,951,223	517,061	7,477,061	9,851,900	22
Skagit Transit	System Enhancements, Expansion and Safety Improvements	EV	830,627	63,781,850	0	7,477,061	830,627	9
Port of Seattle/UW	Burk-Gilman Trail Capacity, Safety, and Transit Connectivity Imp.	CN	12,500,000	76,281,850	0	7,477,061	12,500,000	29
KCM/PSRC	Regional Equitable Development Initiative (REDI) Fund	CN	2,500,000	78,781,850	0	7,477,061	2,500,000	24
SDOT	Did not submit Step 2 Rainier Beach Transit Station	0	0	78,781,850	0	7,477,061	0	3
Valley Transit	Did not submit Step 2 Real Time Bus Info website	0	0	78,781,850	0	7,477,061	0	23

# Scoring Committee Members Score Variation



# Project 1. Pullman Transit – Two, 40-foot Electric Hybrid Buses to Increase Capacity on Express Route

- Legislative district: 9
- Amount requested: \$1,056,000
- Description:

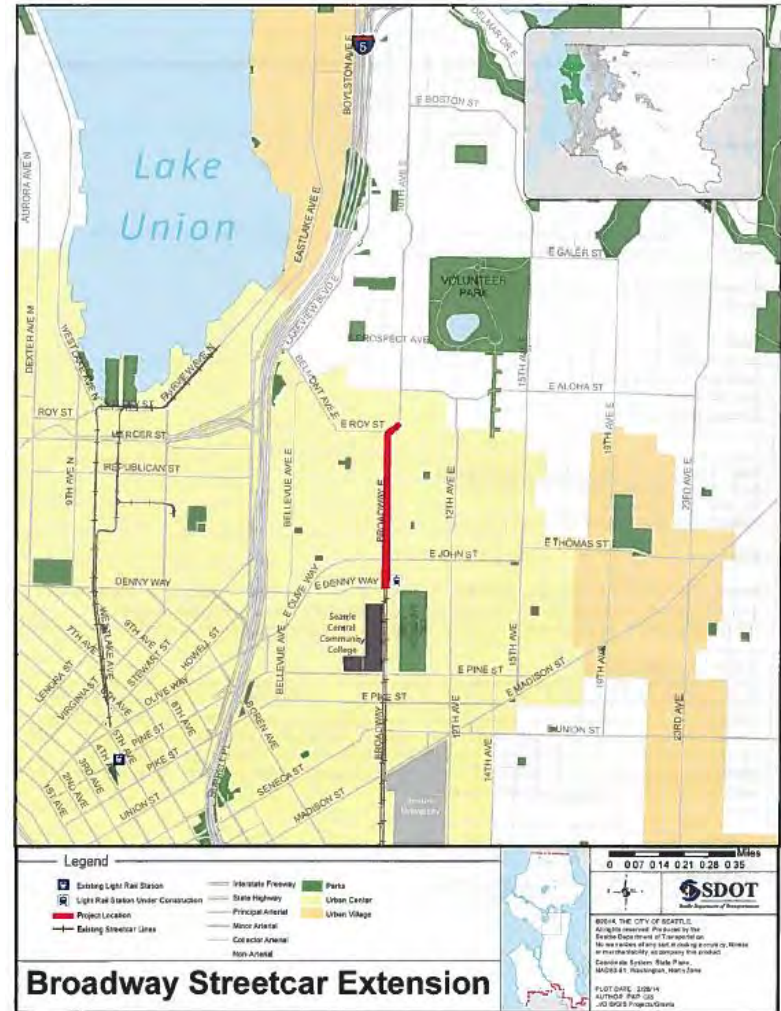
This project will reduce private-vehicle travel by 177,465 miles annually by replacing 35-foot diesel coaches with two, 40-foot electric-hybrid coaches.



# Project 2. City of Seattle – Broadway Streetcar Extension

- Legislative district: 43
- Amount requested: \$4,000,000
- Description:

This project will extend the First Hill Streetcar line approximately one-half mile north along Broadway from east Denny Way to east Roy Street in the Capital Hill neighborhood. This project will provide additional transit-system to Sound Transit's Capitol Hill Link light rail station on Broadway.



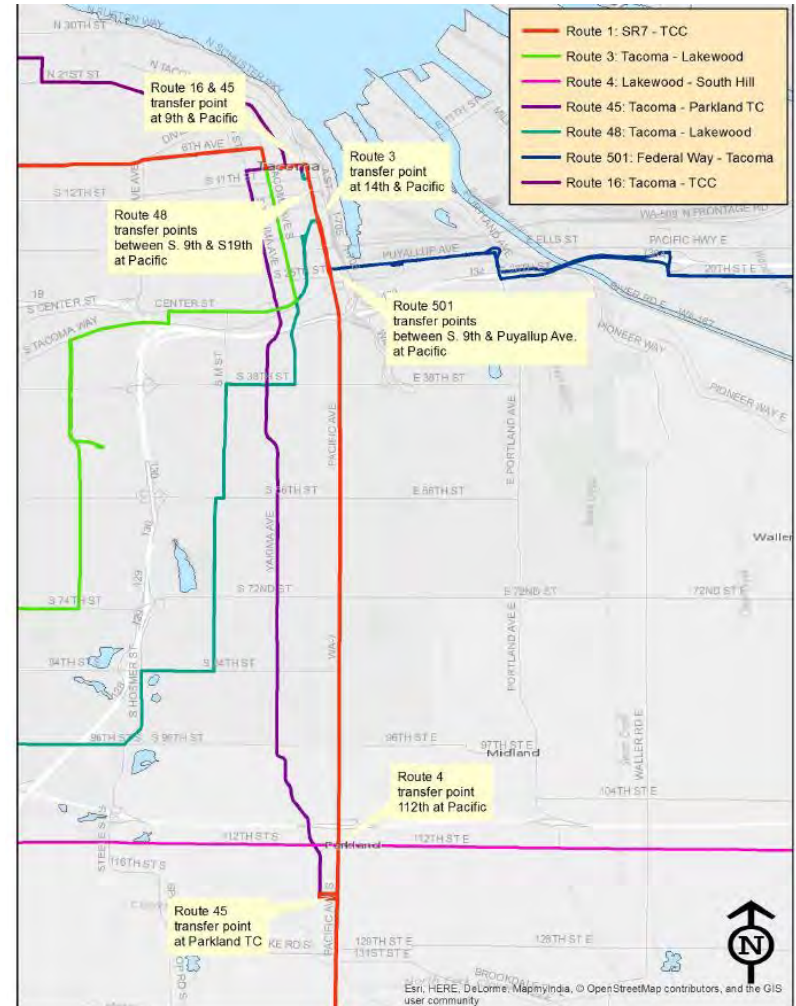
# **Project 3. City of Seattle, Rainier Beach Transit Station - did not submit Step Two of the application**



# Project 4. Pierce Transit – Route 1 Connections/Route 4 112 Street Peak Hour Service Expansion

- Legislative districts: 25, 27, 29
- Amount requested: \$2,320,704
- Description:

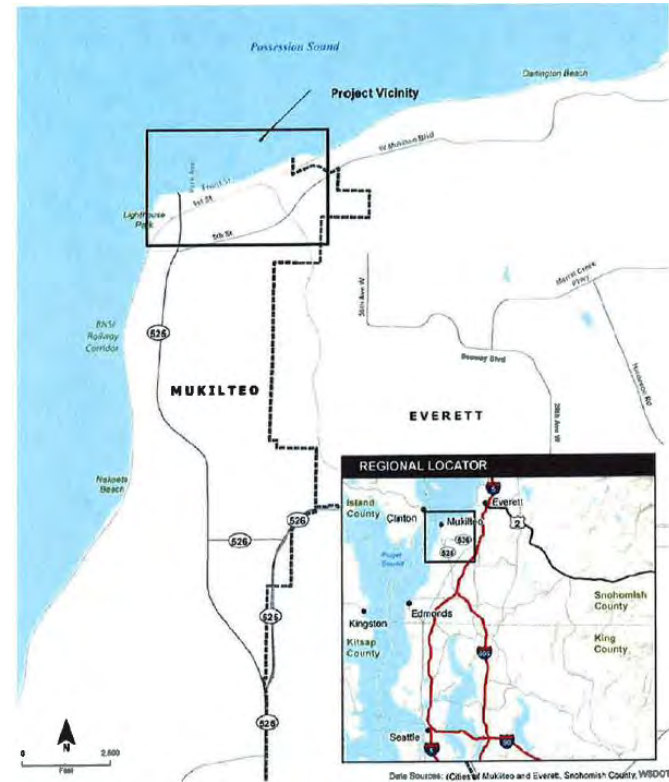
This project expands service and supports two current Regional Mobility Grant-funded projects by adding service hours and increasing the frequency on Route 4 and Route 1.



# Project 5. City of Mukilteo – Mukilteo Multimodal Pedestrian Bridge Project

- Legislative district: 21
- Amount requested: \$527,480
- Description:

This project will remove barriers for pedestrians and provide multi-modal access to the Mukilteo waterfront, Sound Transit Mukilteo Sounder Station and Washington State Ferry terminal by constructing a multi-modal bridge above four commercial rail lines.



# Project 6. Sound Transit – Summer Station Access Improvement

- Legislative district: 25
- Amount requested: \$3,000,000
- Description:

This project will improve access to the Sounder commuter train at Summer Station by building a 400-600 stall park and ride. Sound Transit will also construct a new pedestrian/bicycle bridge, additional bicycle parking and sidewalks, and make lighting and traffic signal-improvements.



# Project 7. Town of Concrete – Solo Park and Superior Avenue Park and Ride Improvement;

- Legislative district: 39
- Amount requested: \$476,800
- Description:

This project will construct a park and ride in the town of Concrete. The park and ride will be constructed in right of way along Superior Avenue between Main Street and SR20.



# Project 8. Kittitas County – I-90, Exit 78 Park and Ride

- Legislative district: 13
- Amount requested: \$223,000
- Description:

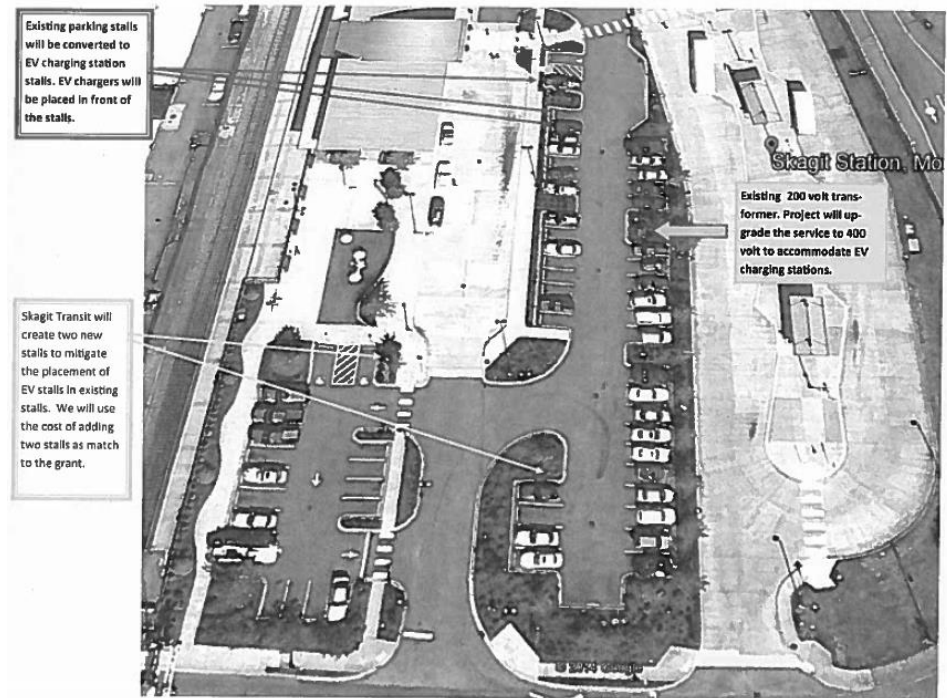
This project will construct a park and ride with spaces for 26 vehicles. The project will include paving, lighting, and a electric vehicle charging station.



# Project 9. Skagit Transit System– System Enhancement, Expansion and Safety Improvements

- Legislative districts: 10, 39, 40
- Amount requested: \$830,627
- Description:

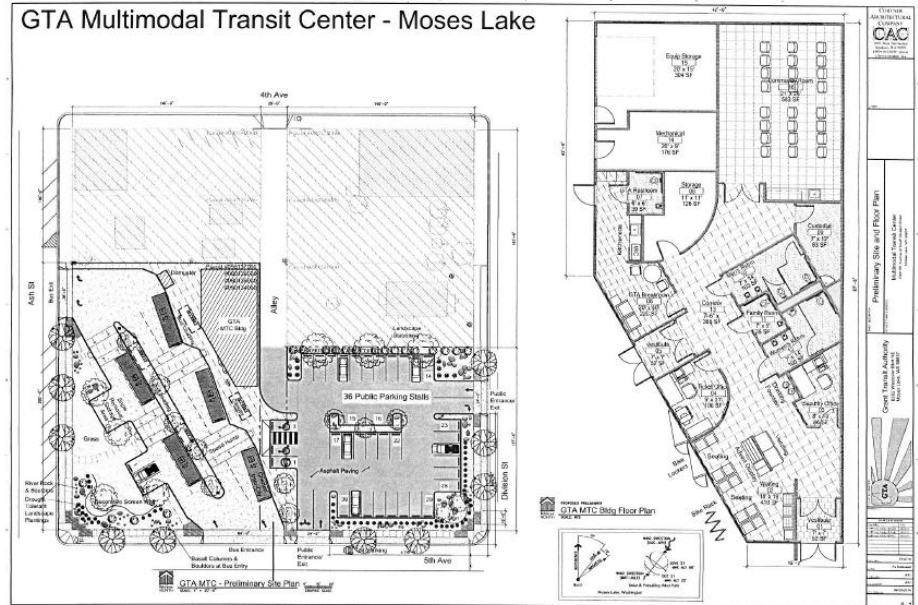
These projects will increase service connectivity and frequency to regional transportation centers. It will also make enhancements to existing transit facilities by increasing security, lighting and an electric vehicle charging station. The projects will integrate with existing local, regional and multi-modal services.



# Project 10. Grant Transit – GTA Multimodal Transit Center

- Legislative district: 13
- Amount requested: \$1,598,400
- Description:

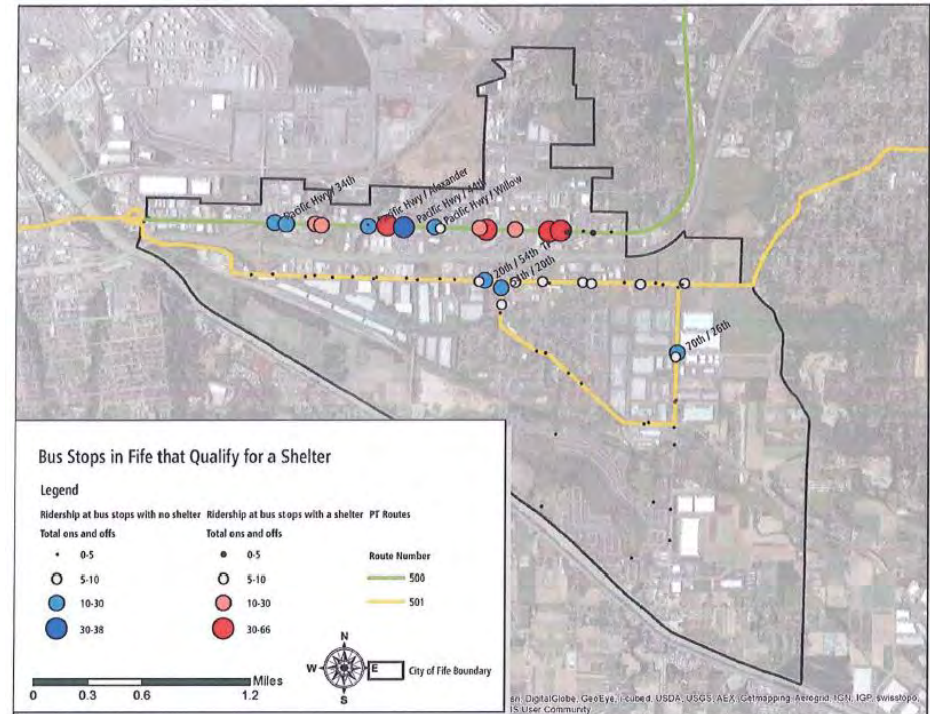
The project will replace the temporary transfer location in Moses Lake currently used for transit-only connections. The new facility and park and ride lot will provide necessary infrastructure to promote increased ridership and consolidate partnerships and connectivity with other transportation providers.



# Project 11. City of Fife– Bus Shelter Installation

- Legislative district: 25
- Amount requested: \$75,200
- Description:

This project adds additional bus shelters along Pacific Highway East/SR 99, 20<sup>th</sup> Street East, and 70<sup>th</sup> Avenue East. The project meets Pierce Transit’s transit development plan and the Puget Sound Regional Council’s regional transit plan by supporting transportation options.





# Project 12. Grays Harbor Transportation Authority– Run Cutting Software Purchase

- Legislative district: 6
- Amount requested: \$56,000
- Description:

This project will enable Grays Harbor Transit (GHT) to fine-tune its fixed route service by allowing the agency to customize trips without creating unnecessary gaps in service. Streamlining routes will enable GHT to carry more passengers with fewer trips and help them to be more fuel efficient, reducing their carbon footprint.

## 3G-TM

### Our Flagship Transportation Management System (TMS)

Built on a single platform, 3G-TM is a full function TMS that seamlessly manages the full transportation lifecycle including:

- **Rating**
- **Routing** (multi-stop and pool distribution optimization)
- **Tendering**
- **Track and trace**
- **Settlement**

3G-TM helps transportation managers:

- Make better decisions
- Harness new opportunities
- Save costs
- Streamline processes
- Address the daily challenges of transportation planning & execution

License the full suite for maximum value or individual modules, like Contract Manager and LTL Rating Tools, to augment existing systems.

3G-TM Features & Functionality, include:

- Automated execution and visibility
- Buy-side & sell-side calculations
- Mode selection (Air, Parcel, LTL, TL, Rail)
- Correct carrier selection
- Shipment tracking and automated alerts
- Freight audit & payment
- Carrier tendering (EDI, Carrier portal, Email)
- Vendor and customer collaboration
- Transit times & schedules
- Multi-stop TL and pool distribution optimization
- Customer and carrier contract management
- Customer quoting & billing
- Analysis & reporting
- Electronic routing guide

Learn More:



## Modules



Request our Demo      Request More Info

**Outstanding Level of Service**  
Your support shows an outstanding level of customer service and dedication to your customer.  
*John P...*  
*Director of Application Development, Pro-Crete Distributors*

# Project 13. Community Transit – Seaway Transit Center-Swift II BRT

- Legislative district: 38
- Amount requested: \$3,000,000
- Description:

This project will construct the Seaway Transit Center. The transit center will serve as the western terminus for the Swift II Bus rapid Transit project. It will operate on a 12-mile corridor from the Everett Boeing Plant to Center Canyon Park.

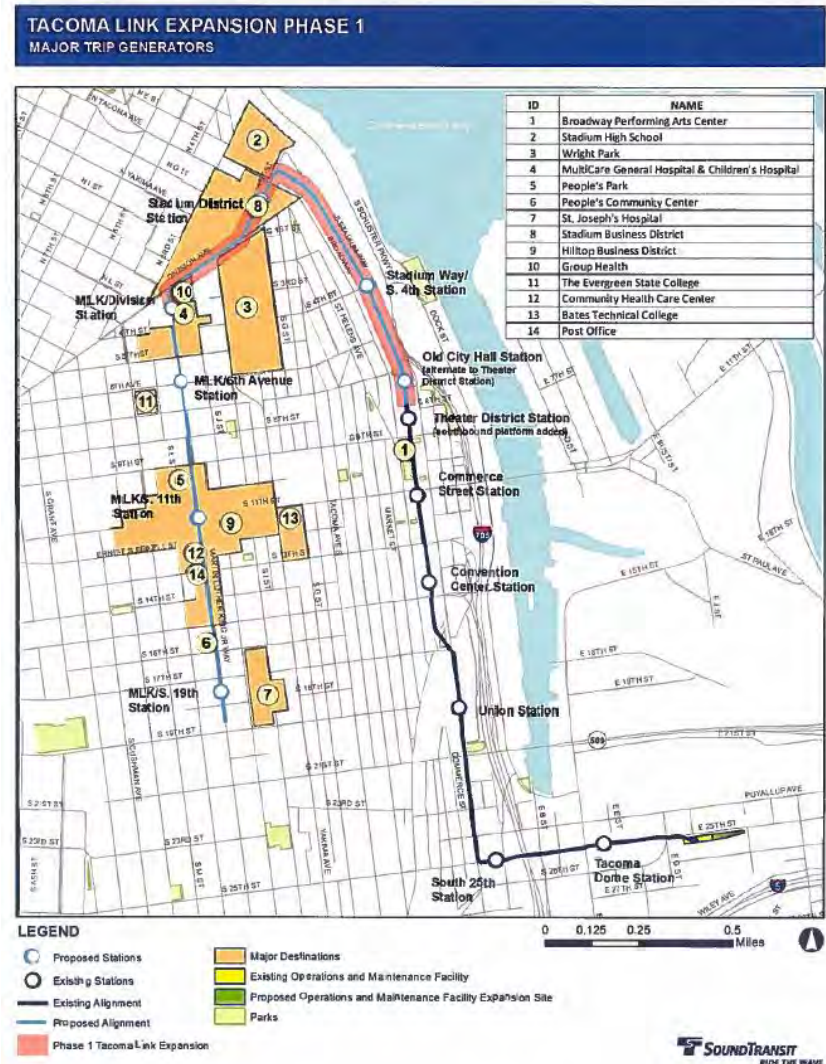
Seaway Transit Center - Project Map - Attachment A



# Project 14. City of Tacoma – Tacoma Link Expansion Phase 1

- Legislative district: 27
- Amount requested: \$2,500,000
- Description:

This project will complete phase 1 of the Tacoma Link Expansion project. Phase 1 will expand Tacoma Link light rail from the existing Theater District Station in downtown Tacoma to MLK/Division Station in the Stadium Business District.



# Project 15. Spokane Transit Authority – West Plains Transit Center

- Legislative districts: 6, 7, 9
- Amount requested: \$1,740,000
- Description:

This project will construct a transit center at the Medical Lake Interchange of I-90. The facility will improve regional mobility by providing transit connection opportunities between cities on the West Plains and Spokane. It will include pedestrian/bicycle and private vehicle access, making it a true multimodal facility.



# Project 16. C-TRAN – Fisher’s Landing Transit Center South Parking Expansion and Amenity Upgrade

- Legislative districts: 17, 18
- Amount requested: \$2,848,715
- Description:

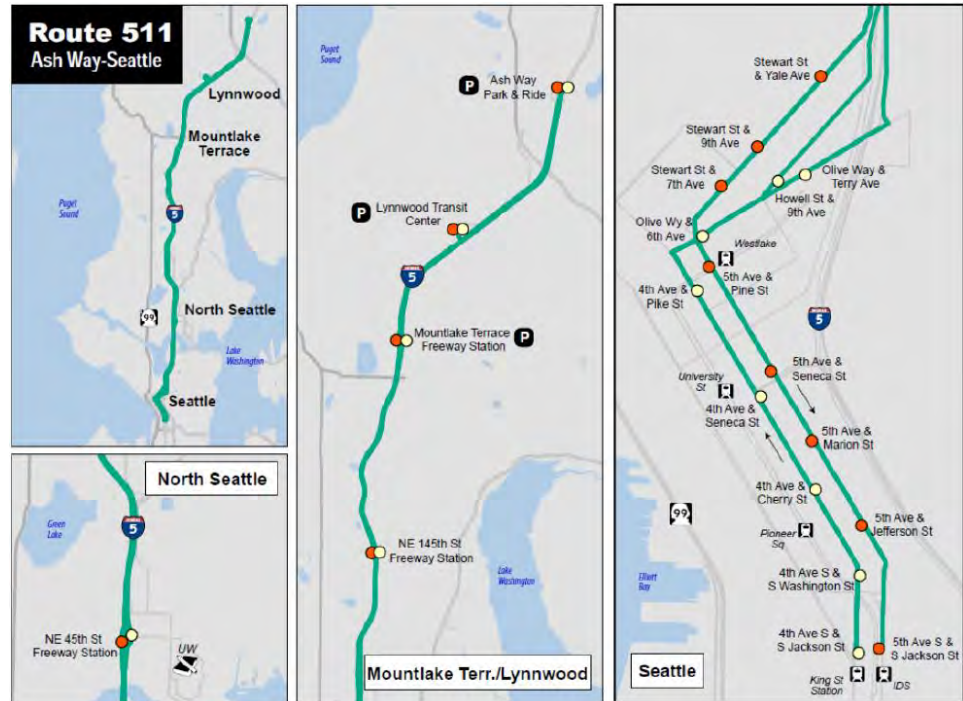
This project will expand parking capacity on the 3.2 acres at the south end of the Fisher’s Landing Transit Center. The project includes other pedestrian amenities.



# Project 17. Sound Transit – High Capacity Transit Double Decker Bus Project

- Legislative district: 7
- Amount requested: \$4,000,000
- Description:

This project will replace aging 60-foot conventional diesel buses used on ST Express routes that serve Snohomish and King Counties. These buses will provide service to major regional growth centers of Everett, Seattle and Bellevue. This project supports regional commuter bus service connecting major population and employment centers that serve the congested corridors of I-5 and I-405.



# Project 18. Link Transit – Wenatchee Riverfront Shuttle

- Legislative district: 12
- Amount requested: \$1,260,000
- Description:

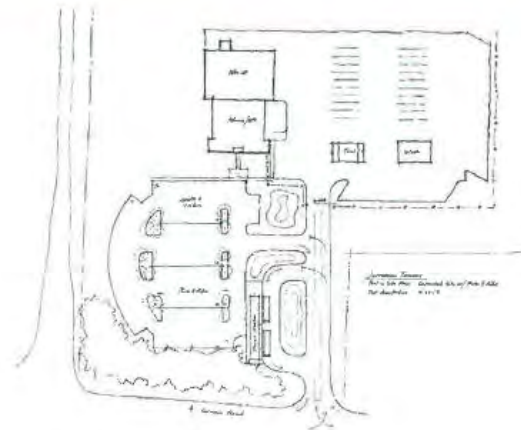
This project creates a six-day-per-week, high-frequency shuttle connecting Link's intermodal facility with the Wenatchee Valley College via the waterfront region, utilizing zero-emission electric shuttle buses.



# Project 19. Jefferson Transit Authority – SR 20/ Four Corners Road Park and Ride Facility

- Legislative district: 24
- Amount requested: \$1,040,000
- Description:

This project will construct a 100-stall park and ride at the intersection of SR20 and Four Corners Road in Jefferson County. The facility will include a electric-vehicle charging station, restrooms and facilities to store bicycles.





# Project 20. City of Kent – Kent Transit Center- 1<sup>st</sup> Avenue N Parking

- Legislative districts: 33, 47
- Amount requested: \$272,000
- Description:

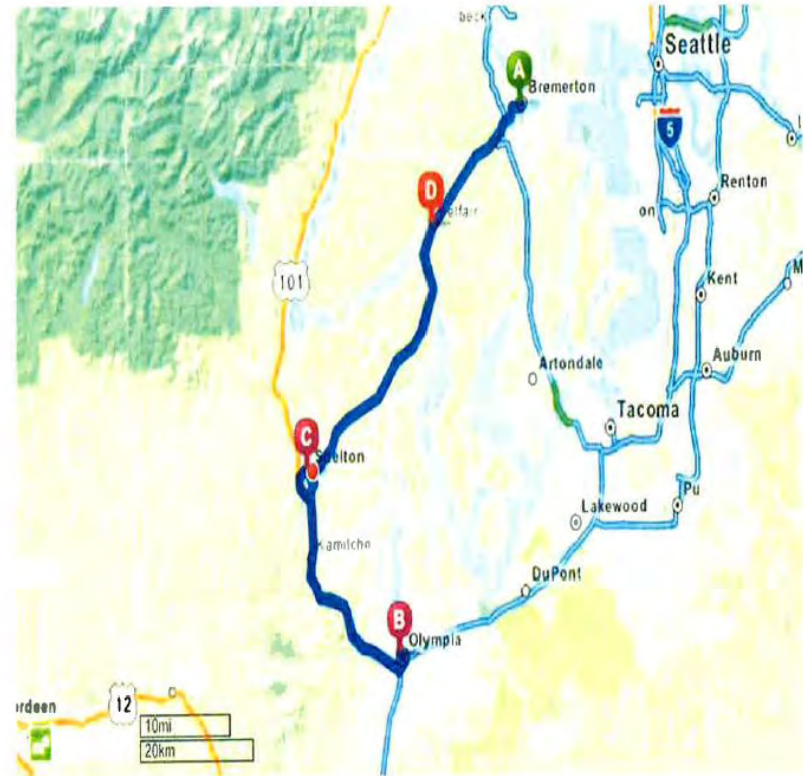
This project will complete pedestrian facilities along the west side of First Avenue north adjacent to the Sounder rail platform at the Kent Transit Center. The project will provide 36 new parking stalls, street lighting and pedestrian amenities.



# Project 21. Mason Transit – Regional Express Commuter Bus Service

- Legislative district: 6
- Amount requested: \$1,316,946
- Description:

This project will operate a regional commuter express service between Mason County (Shelton) and Kitsap County (Bremerton ferry terminal). It will also provide service between Mason County (Shelton) and the Olympia Transit Center. Mason Transit will market the new service and purchase three, 40-foot biodiesel coaches necessary to provide the new service.

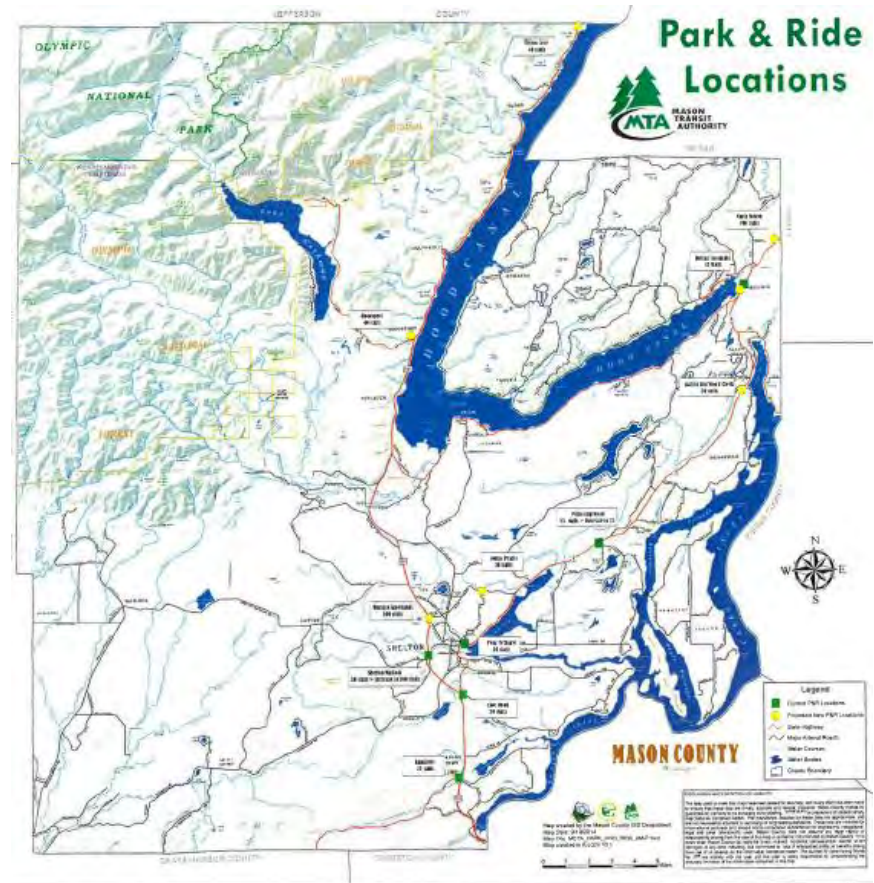


Mason Transit Authority Limited Stop regional Express Service Route

# Project 22. Mason Transit – Park and Ride Development

- Legislative district: 6
- Amount requested: \$9,334,839
- Description:

This project will develop new park and ride lots and make improvements to an existing park and ride. The project will increase the number of parking spaces in their service area from 154 to 506 when completed. The project will also add curbside chargers for electric cars.

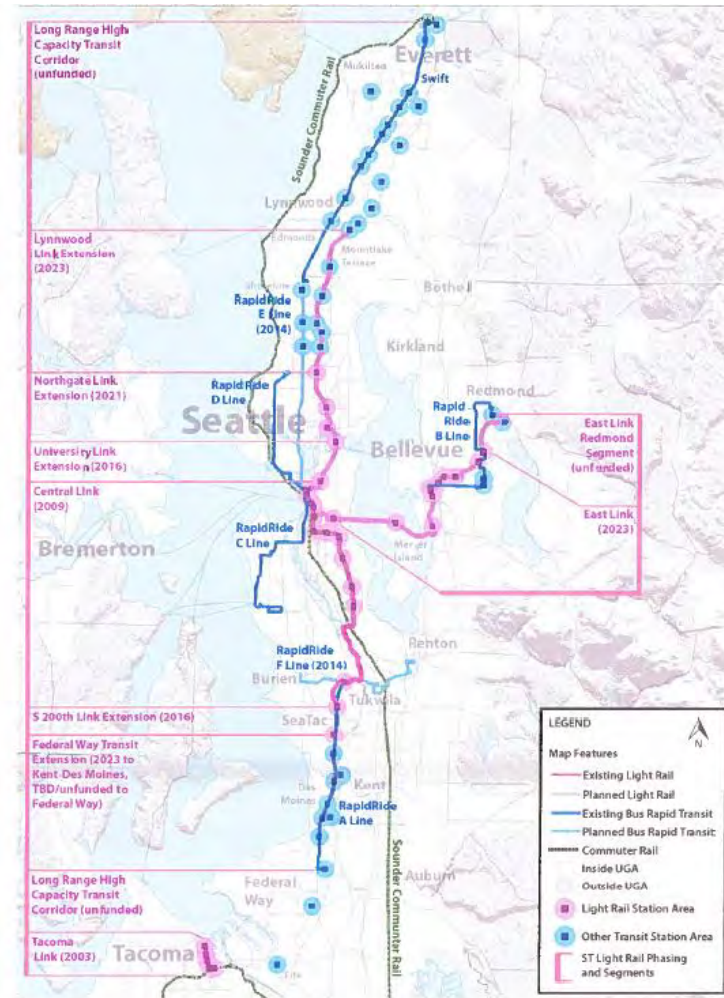


# **Project 23. Link Transit, Real Time Bus information Website – did not submit Step Two of the application**

# Project 24. King County Metro – Regional Equitable Development Initiative Fund

- Legislative districts: Various
- Amount requested: \$2,500,000
- Description:

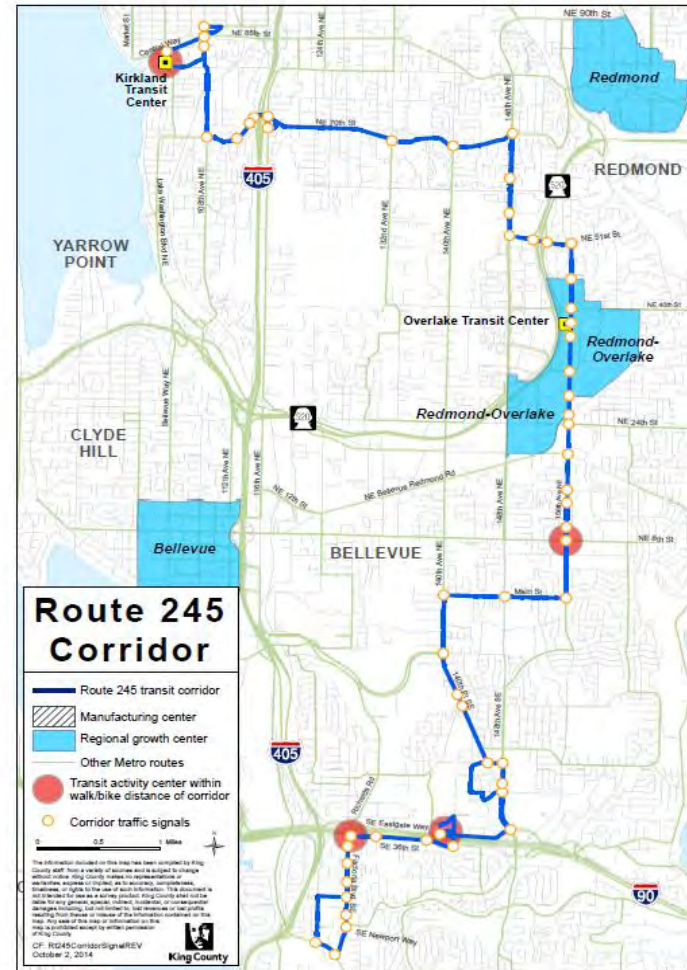
This project will create a Regional Equitable Development Initiative loan fund for the central Puget Sound region. This is a collaborative partnership that includes King County, city of Seattle, Regional Coalition for Housing of East King County, Snohomish County, Pierce County, and the city of Tacoma.



# Project 25. King County Metro – Route 245 Corridor Speed and Reliability Improvements

- Legislative districts: 42, 45, 48
- Amount requested: \$2,192,000
- Description:

This project will improve bus reliability and travel time on a congested, high-ridership transit corridor by implementing a package of transit signal prioritization treatments.



# Project 26. King County Metro – Additional Service on corridors SR-522 and I-5

- Legislative districts: 1, 30, 33, 37, 43, 45, 46
- Amount requested: \$1,736,810
- Description:

This project is a collaboration between Sound Transit and King County Metro to expand peak-hour transit capacity through service additions in two congested corridors.



# Project 27. King County Metro – I-90 Manage Demand (TDM)

- Legislative districts: 5, 11, 34, 36, 37, 41, 43, 48
- Amount requested: \$2,880,000
- Description:

This joint project between King County Metro and Sound Transit will implement proven and effective multi modal strategies to reduce vehicle trips on I-90 and its connecting arterials during critical phases of upcoming highway and regional transit construction projects.

WSDOT Regional Mobility Grant  
King County Metro I-90 Manage Demand

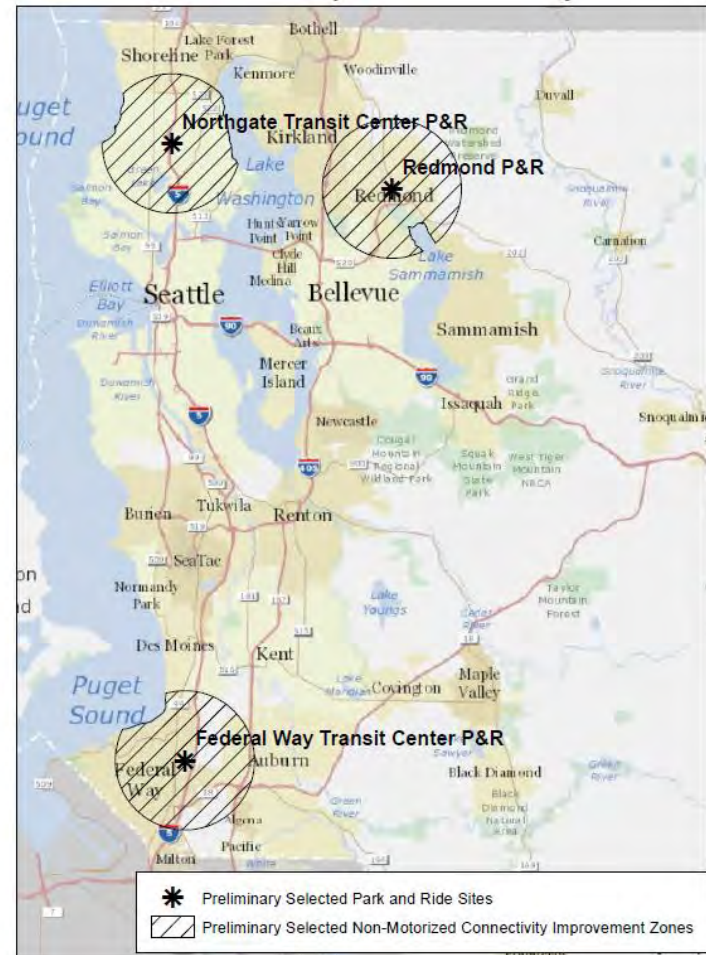




# Project 28. King County Metro Transit – Park and Ride Efficiency and Access Project

- Legislative districts: 30, 46, 48
- Amount requested: \$1,040,000
- Description:

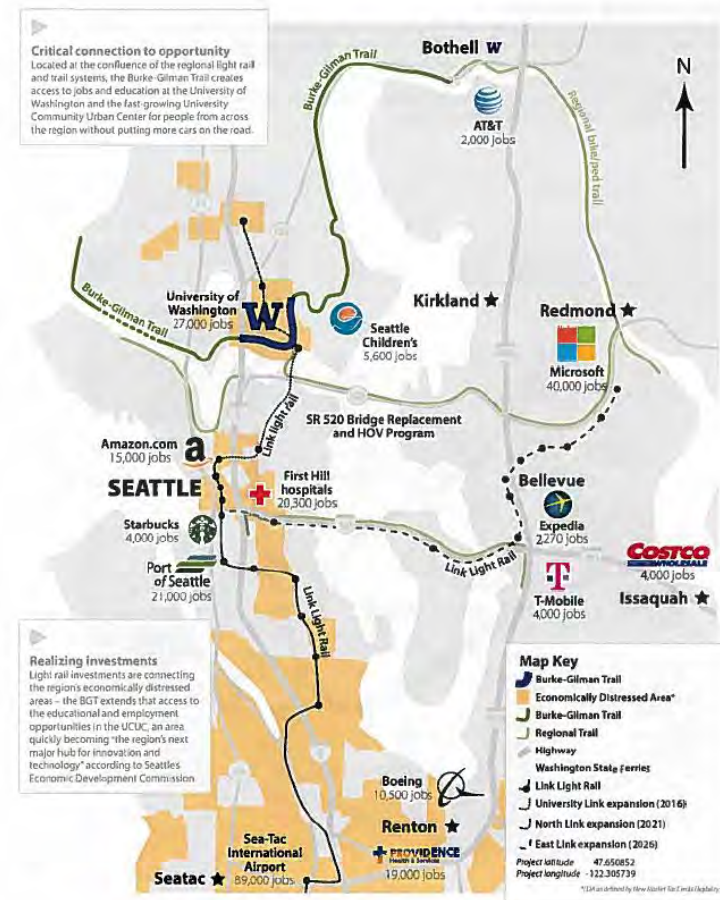
This project will improve mobility at overcrowded park and ride lots in King County through implementation of a high-occupancy vehicle parking program at the facilities by expanding the capacity of overcrowded regional park and ride lots. The project will provide increased person-throughput on congested corridors through a partnership with Sound Transit and local jurisdiction.



# Project 29. Port of Seattle/University of Washington – Burke-Gilman Trail Capacity, Safety, and Transit Connectivity Improvements

- Legislative district: 7
- Amount requested: \$12,500,000
- Description:

This project will transform 1.7 miles of one of our nation’s most heavily used urban trails from its current state into a national model, demonstrating how active transportation infrastructure is uniquely capable of serving as a low-cost or no-cost connection to education and training, employment, and social services. This project is a collaborative partnership between the Port of Seattle and the UW.



# Contacts

## Brian Lagerberg

Public Transportation Director

360-705-7878

lagerbb@wsdot.wa.gov

## Mark Eldridge

Regional Mobility Program Manager

360-705-7273

eldridm@wsdot.wa.gov

