

LEAP Presentation to Congress



Speaker Sawyer with Representatives Shinpoch and Bagnariol presenting LEAP to Senator Magnuson in his DC office. (not dated)

Soon after implementing LEAP (Legislative Evaluation and Accountability Program) in Washington State, Speaker Sawyer with co-chairs of the House Ways and Means Committee, John Bagnariol and A.N. Shinpoch, attended a national legislative conference and presented their new approach to state budgeting. They received several requests from other states for demonstrations of the program and also presented their work to US Senator Warren Magnuson, at that time chair of an Appropriations subcommittee. The following materials were contained in a folder created for the presentation to Senator Magnuson but give a good overview of the conception of LEAP.

- **Folder Cover**
- **Inside Cover explaining LEAP concept**
- **Letter from Speaker Sawyer**
- **Leadership Profiles: Leonard Sawyer, John Bagnariol, A.N. Shinpoch**
- **Budget Analysis and Evaluation Charts**

Folder Cover

PRESENTATION TO THE CONGRESS OF THE UNITED STATES FROM THE STATE OF WASHINGTON



Inside Cover explaining LEAP concept



The LEGISLATIVE EVALUATION AND ACCOUNTABILITY PROGRAM (LEAP) provides Washington State legislature an instrument for the reassertion of its role as an equal, independent branch of state government. LEAP puts at the legislators' disposal an information system that enables them to keep abreast of increasingly complex budgetary processes. As well as supporting budget preparation, LEAP will enable the legislators to monitor agency spending performance against legislative intent.

To accomplish these objectives, an interactive computer system known as BASE (BUDGET ANALYSIS FOR STATE-WIDE EVALUATION) has been implemented for use in analysis and preparation of the state budget. Agency requests and the Governor's budget recommendations are stored in an online data base. Various Senate and House positions are added during the session. On request, the system will instantly generate a wide variety of reports for analysis and comparison of the various budget plans. An interactive graphics capability permits visual representation of budget data, further simplifying the interpretation of massive amounts of data. In addition, BASE provides extensive statistical and computational capability. Budget information can be updated at the program or agency level; these changes are automatically made to all budget summaries in the data base.

The LEAP concept, supported by BASE, provides invaluable assistance to the legislature in the formulation of fiscal policies.

Letter from Speaker Sawyer



LEONARD A. SAWYER
SPEAKER

To The Honorable
Members of the House and Senate
Budget Committees
United States Congress
Washington, D.C. 20510

Ladies and Gentlemen:

The following information contained in this document I hope will assist each of you to better understand the Legislative Evaluation and Accountability Program (LEAP).

In recent years our state legislature, like others, has experienced a significant increase in citizen involvement in the legislative process. The nature and character of citizenry needs and demands establishes the basis for many legislative information requirements. Members of the legislature must observe, examine, and respond to the citizen needs for government from several individualized prospects. The biggest majority of these needs translate into the dollars needed to run all levels of government.

Traditionally, the legislature's approach to monitoring this system was through trial and error. This, of course, was costly both in terms of time and resources. To improve the legislature's ability to perform this role, it was necessary to identify prevalent financial data and statistical indicators and to present them as meaningful, decision-making information. It was also necessary that these indicators be monitored regularly by the legislature.

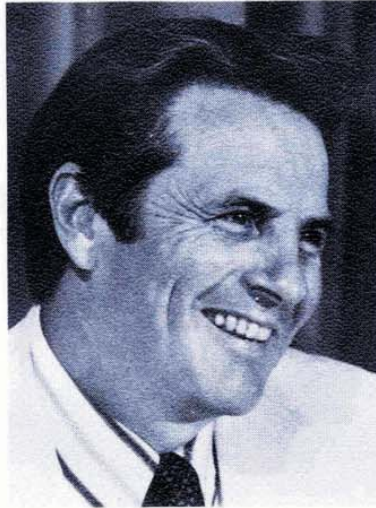
For this reason, the Washington State Legislature authorized, during the 43rd Session, the Legislative Evaluation and Accountability Program (LEAP) to assist the legislature with the development of efficient, effective and sensitive ways in which to monitor government system changes within its jurisdiction and control.

At the state level, we find that the LEAP system is a useful fiscal management tool which is becoming increasingly indispensable. Hopefully, our experience will be helpful in your deliberations on the Federal level.

Sincerely yours,

LEONARD A. SAWYER
Speaker

Leadership Profiles



LEONARD A. SAWYER
Speaker of the House
Washington State Legislature

Speaker Sawyer brings to the leadership of the Washington State Legislature over twenty years of broad legislative experience which includes service on nearly every committee of the House, the Chairmanship of the Highways Committee, and leadership responsibilities within the Democratic caucus.

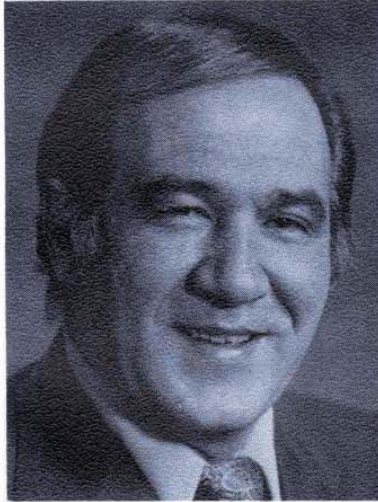
Presently serving his second term as Speaker of the House, Mr. Sawyer has been the primary force in implementing legislative reforms in Washington State. The elements of that reform are based on a reassertion of the legislature's proper role as an equal, independent branch of state government. Specific changes, such as permanent professional staffing and a continuing committee structure, now enable the legislature to meet its increasing responsibilities and to form its judgments on complex issues on the basis of independently gathered information.

Legislative reforms have had a particularly significant impact on state fiscal policy. With the implementation of the **LEGISLATIVE EVALUATION AND ACCOUNTABILITY PROGRAM (LEAP)**, citizen legislators now have at their disposal an information system which enables them to examine the state's financial structure and to keep abreast of increasingly complex budgetary processes and developments. In the past, they have had to rely solely on data presented by the Executive branch.

Mr. Sawyer's efforts and leadership in strengthening the legislative branch of state government have been recognized nationally, and by his colleagues in the legislature. He holds a position on the Executive Board of the National Legislative Leaders Conference, was appointed by President Johnson to serve on the Advisory Committee on Automobile Design Safety, and was voted "Most Effective Legislator" by fellow representatives in 1974.

Born and raised in Puyallup, Washington, Mr. Sawyer has represented his district in Pierce County continuously since 1954. Prior to that, he served as Deputy Prosecuting Attorney in Pierce County, after obtaining his law degree from the University of Washington. He is a practicing attorney in the Tacoma, Washington area and lives with his wife, Beverly, and their five children at Lake Tapps, near Puyallup.

Leadership Profiles



JOHN A. BAGNARIOL, Chairman
House Ways and Means Committee
Washington State Legislature

As Chairman of the House Ways and Means Committee, Representative Bagnariol is primarily concerned with establishing and implementing responsible spending policies which provide adequate funding for state government without increasing the tax burden on this state's citizens.

First elected to the Washington State House of Representatives in 1966, Mr. Bagnariol has the experience, the legislative skills, and the respect of his colleagues, which enables him to guide often difficult issues through the legislative process.

In that regard, he has made every effort to provide his fellow legislators with information and insights into budgetary processes and the state's financial structure, which would allow them to make responsible decisions on government spending. The LEGISLATIVE EVALUATION AND ACCOUNTABILITY PROGRAM (LEAP) is a key step in these efforts. During the most recent session of the Legislature, lawmakers were provided with more complete analytical data and spending reviews than ever before, clarifying what is usually a very complex and highly technical area of their responsibilities as "watchdogs of the public purse." In that respect, Representative Bagnariol regards the LEAP system as an invaluable tool in implementing his policies on overseeing public expenditures.

Representative Bagnariol owns and operates an independent insurance agency in Renton, Washington, where he lives with his wife and eight children.

Before assuming the Chairmanship of the Ways and Means Committee, he served as Vice Chairman of the Public Pension Commission and was a member of the House Financial Institutions and Commerce Committees.

Leadership Profiles



A. N. "BUD" SHINPOCH, Chairman
House Ways and Means Appropriations Committee
Washington State Legislature

Representative Shinpoch has, during his five years in the Washington State Legislature, established himself as a well respected authority on state fiscal policies and processes.

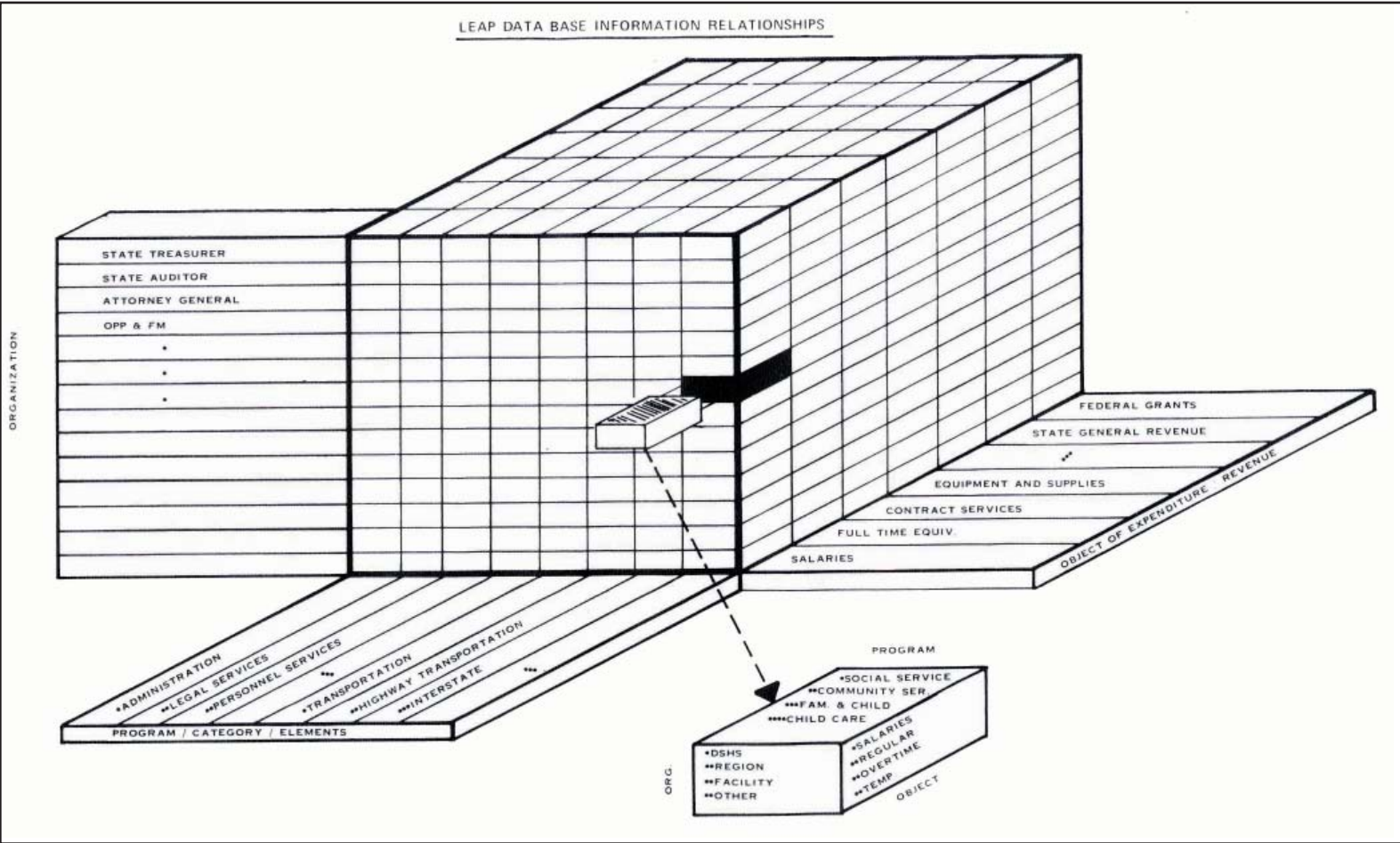
Appointed to the House of Representatives in December 1969, and subsequently elected in 1970, he has served on the Judiciary and Local Government Committees of the House, and as chairman of the Legislative Budget Committee. He has held his current position—the chairmanship of the House Appropriations Committee—since 1973.

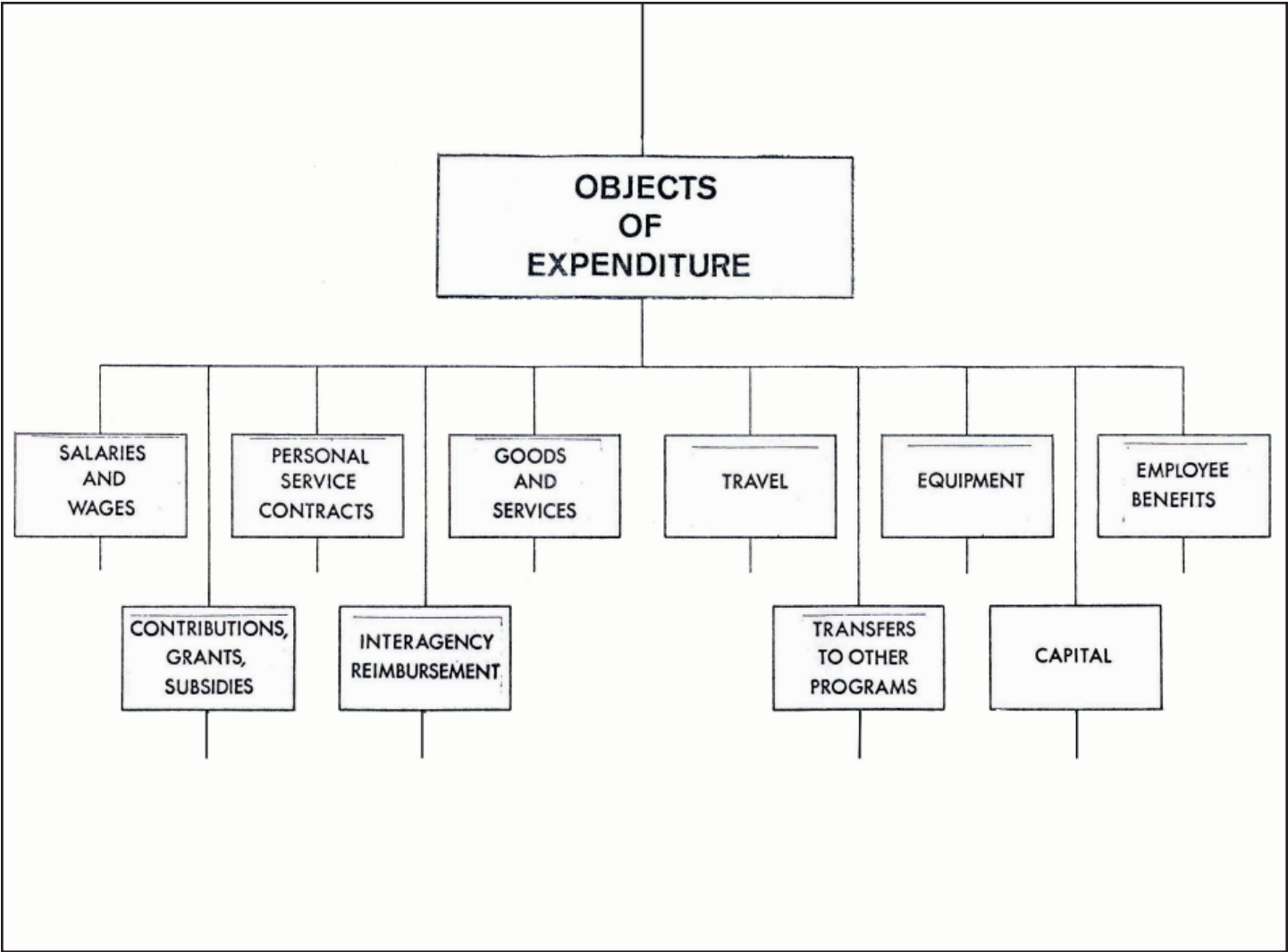
Representative Shinpoch has been working for revisions in state budgetary processes and for uniform accounting procedures. These will be incorporated in a new budget format, identifying agency budgets at a level which permits adequate monitoring and control of expenditures.

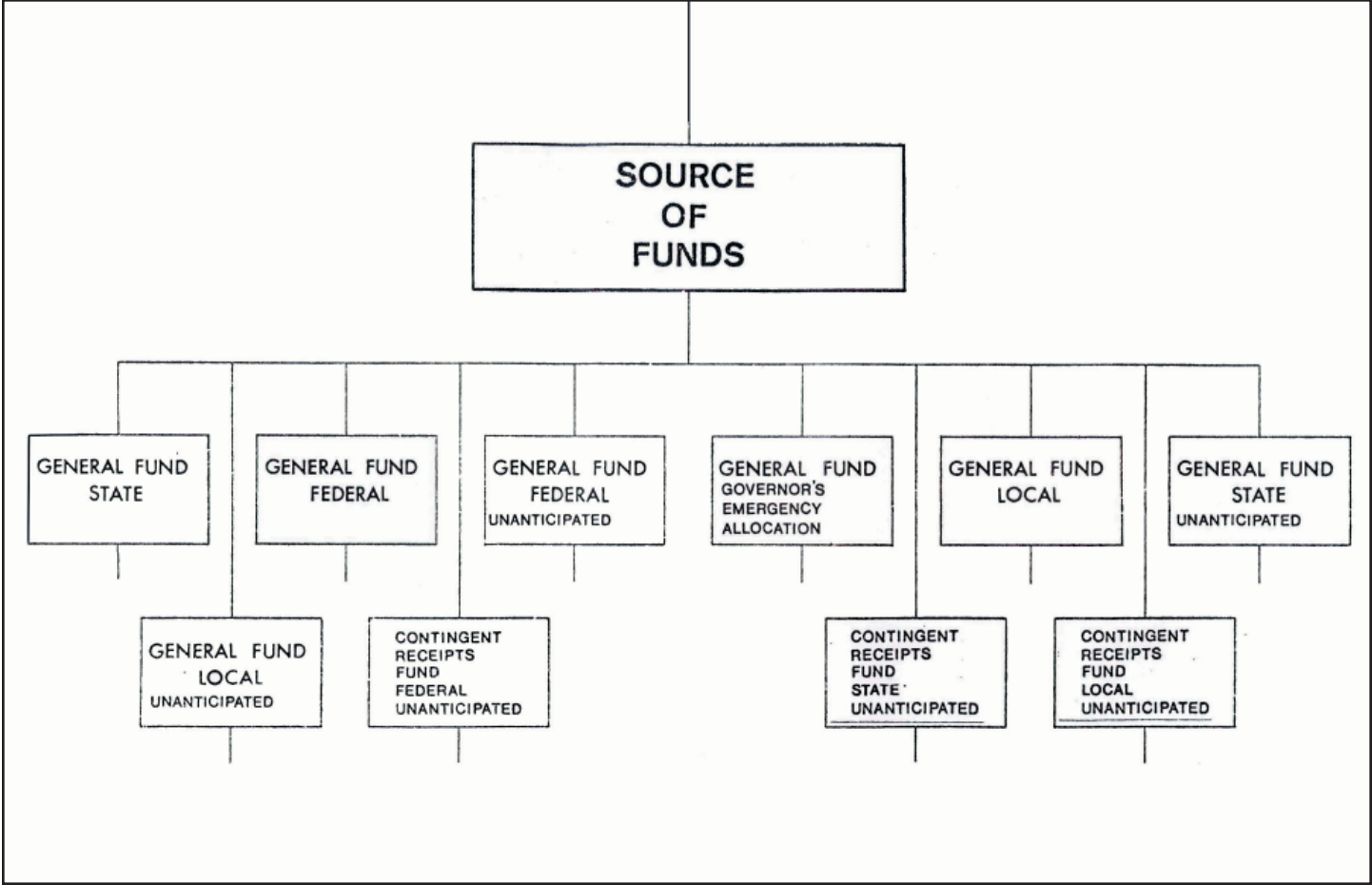
The implementation of the LEGISLATIVE EVALUATION AND ACCOUNTABILITY PROGRAM (LEAP) is a key element in Mr. Shinpoch's efforts towards budget reform. It is a sophisticated information system which enables legislators to keep abreast of budgetary developments, but more than that, it serves the legislature as a significant planning instrument in formulating fiscal policies. One of Representative Shinpoch's major concerns as a legislator has been the long-range effect of new legislative programs on future state budgets. Through its capability for projecting fiscal developments on a "what if" basis, the LEAP system allows the legislature to review the impact of possible alternatives before it makes decisions which have a far-reaching effect on this state's finances.

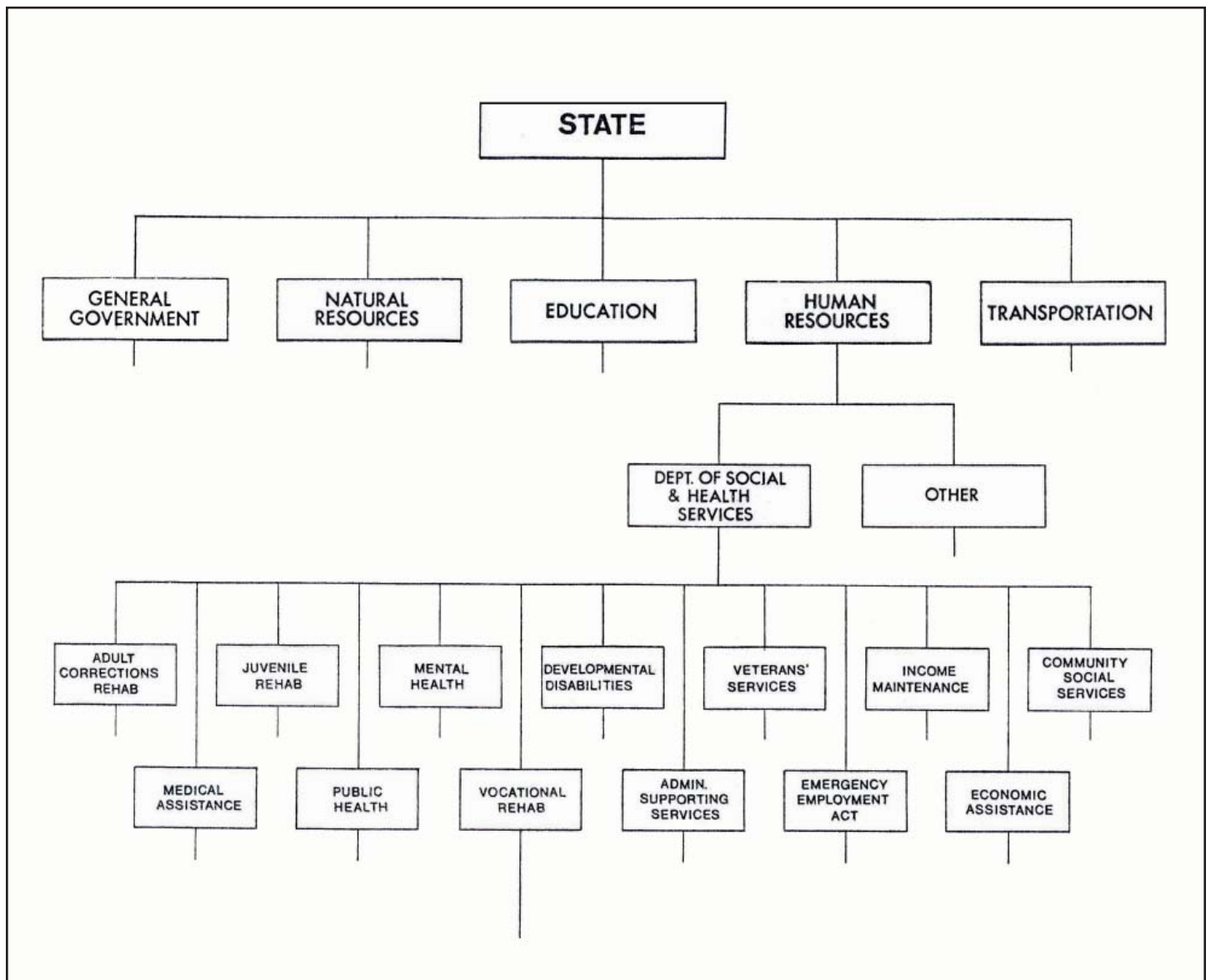
Bud Shinpoch is originally from Oklahoma and lives in Renton, Washington, where he is actively involved in community affairs. He and his wife have two daughters and a granddaughter. He works for The Boeing Company in a management position.

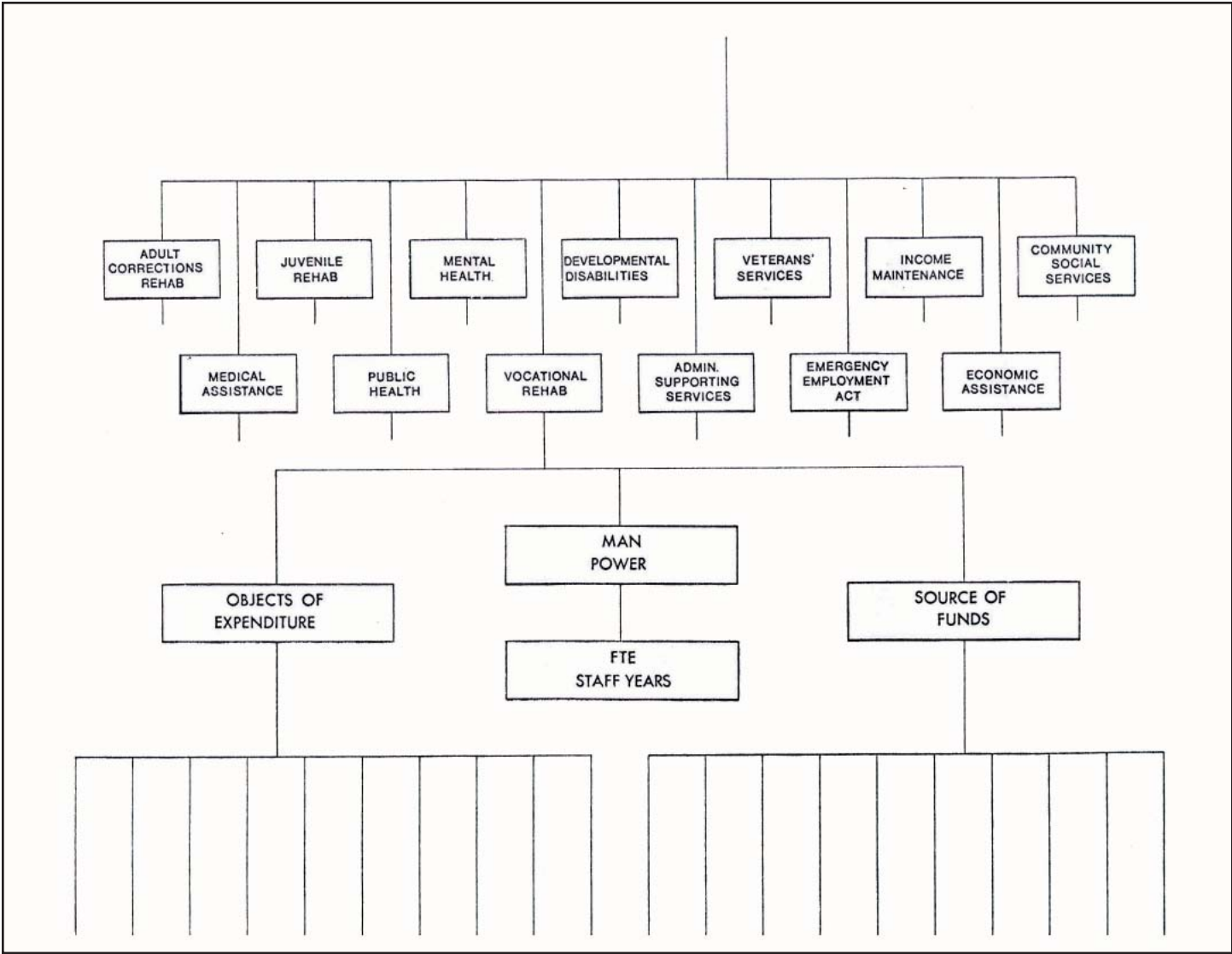
Budget Analysis and Evaluation Charts











CONCEPTUAL RELATIONSHIP OF LEAP

DATA BASE HIERARCHY

EXAMPLE

STATE OF WASHINGTON

Department of Social and
Health Services

Mental Health Services

Institutional
Services

Life
Support

Medical

Etc.

LEVEL n

LEVEL 1

LEVEL 2

LEVEL 3

LEVEL 4

LEVEL 5

L
E
G
I
S
L
A
T
I
V
E

E
X
E
C
U
T
I
V
E

O
P
E
R
A
T
I
O
N
A
L

OBJ - 01
Salaries

OBJ - 02
Personal
Service
Contracts

OBJ - 03
Goods and
Services

OBJ - 04
Travel

OBJ - 06

OBJ - 07
Employee
Benefits

OBJ - 08
Grants
and
Subsidies

OBJ - n
... etc.

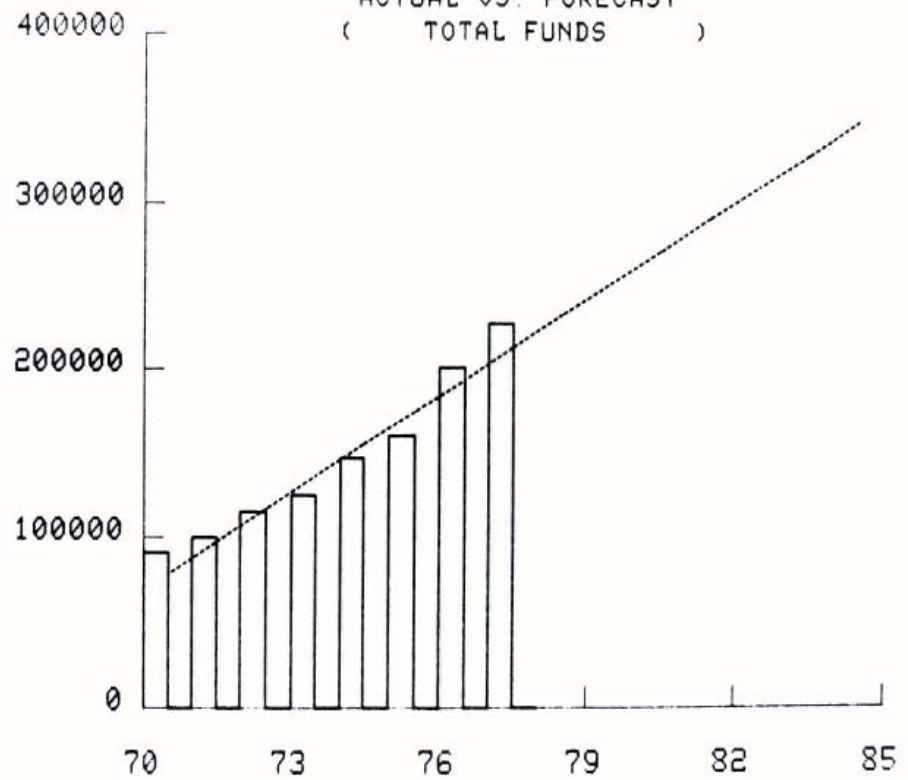
WASHINGTON STATE 1975-77 BIENNIUM BUDGET
GOVERNOR-OPERATING BUDGET RECOMMENDATION
DEPARTMENT OF SOCIAL AND HEALTH SERVICES

DATE 01/08/76

TIME 13 46

MEDICAL ASSISTANCE
ACTUAL VS. FORECAST
(TOTAL FUNDS)

	(DOLLARS IN THOUSANDS)		
	ACTUAL	FORECAST	DELTA
1970	90.776	78.252	12.524
1971	99.948	97.474	2.474
1972	114.733	116.697	-1.964
1973	124.298	135.919	-11.621
1974	146.898	155.141	-8.243
1975	159.899	174.363	-14.464
1976	201.031	193.585	7.445
1977	226.657	212.808	13.850
1978		232.030	
1979		251.252	
1980		270.474	
1981		289.697	
1982		308.919	
1983		328.141	
1984		347.363	



PREPARED BY HOUSE WAYS & MEANS STAFF

WASHINGTON STATE 1975-77 BIENNIAL BUDGET
JOINT LEGISLATIVE OPERATION BUDGET

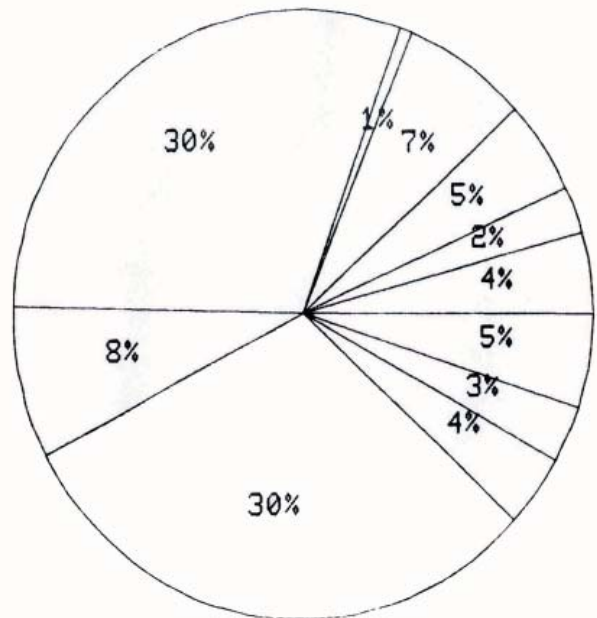
DATE 01/08/76 DEPARTMENT OF SOCIAL AND HEALTH SERVICES
DEPT SOC HLTH SVCS

TIME 13:38

TOTAL FUNDS
(DOLLARS IN THOUSANDS)

ADULT CORR & REHAB	62,114	4%
JUVENILE REHAB	35,777	2%
MENTAL HEALTH	70,860	5%
DEVELOP DISABILITIES	101,018	7%
VETERANS' SERVICES	9,879	1%
INCOME MAINTENANCE	432,618	30%
COMM SOCIAL SERVICES	116,311	8%
MEDICAL ASSISTANCE	436,105	30%
PUBLIC HEALTH	55,633	4%
VOCATIONAL REHAB	42,861	3%
ADMIN & SUPP SVCS	72,879	5%

TOTAL 1,436,052 100%



PREPARED BY HOUSE WAYS & MEANS STAFF

WASHINGTON STATE 1975-77 BIENNIUM BUDGET
JOINT LEGISLATIVE OPERATION BUDGET

DATE 01/08/76

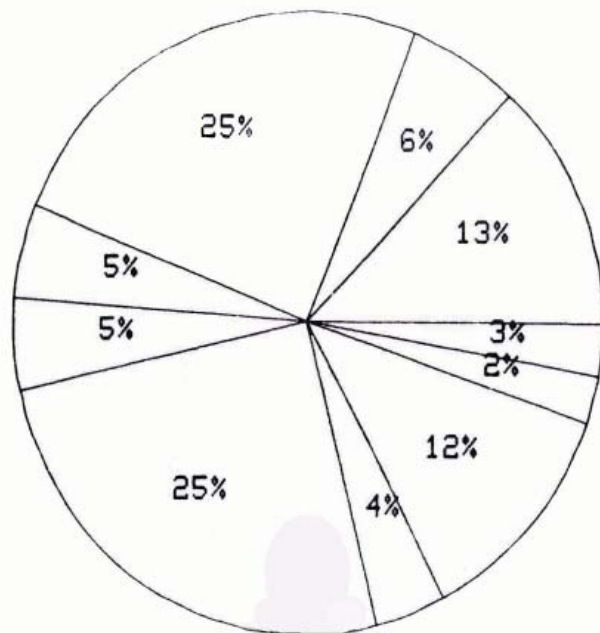
TOTAL STATE BUDGET (IN THOUSANDS)
TOTAL BUDGET

TIME 13:36

TOTAL FUNDS
(DOLLARS IN THOUSANDS)

GEN'L GOVERNMENT TOT	764,431	13%
NAT RESOURCES/RECR	352,124	6%
DSHS TOTAL	1436,054	25%
OTHER HUMAN RES.-TOT	288,253	5%
TRANSPORTATION TOTAL	278,044	5%
PUBLIC SCHOOLS TOTAL	1472,863	25%
COMMUNITY COLLEGE TO	228,017	4%
HIGHER EDUC. TOTAL	691,812	12%
EDUC. OTHER-TOTAL	144,562	2%
SUPPLEMENTAL APPROP	160,466	3%

TOTAL 5,816,626 100%



PREPARED BY HOUSE WAYS & MEANS STAFF

WASHINGTON STATE 1975-77 BIENNIAL BUDGET
JOINT LEGISLATIVE OPERATION BUDGET

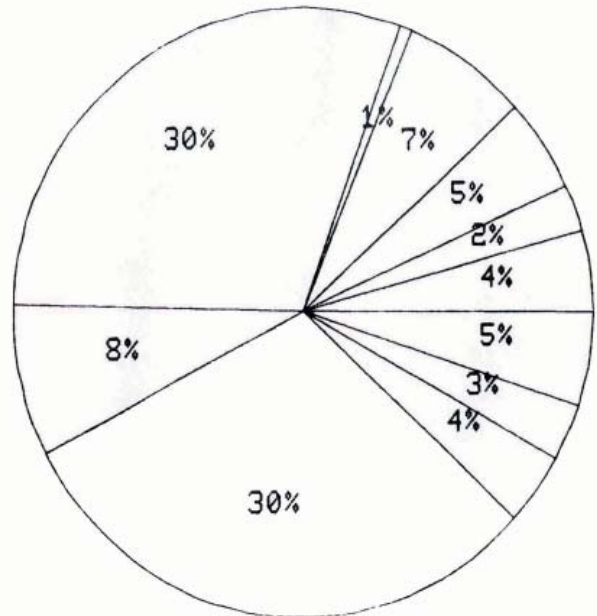
DATE 01/08/76 DEPARTMENT OF SOCIAL AND HEALTH SERVICES
DEPT SOC HLTH SVCS

TIME 13:38

TOTAL FUNDS
(DOLLARS IN THOUSANDS)

ADULT CORR & REHAB	62,114	4%
JUVENILE REHAB	35,777	2%
MENTAL HEALTH	70,860	5%
DEVELOP DISABILITIES	101,018	7%
VETERANS' SERVICES	9,879	1%
INCOME MAINTENANCE	432,618	30%
COMM SOCIAL SERVICES	116,311	8%
MEDICAL ASSISTANCE	436,105	30%
PUBLIC HEALTH	55,633	4%
VOCATIONAL REHAB	42,861	3%
ADMIN & SUPP SERVS	72,879	5%

TOTAL 1,436,052 100%



PREPARED BY HOUSE BUDGET & PLANS STAFF

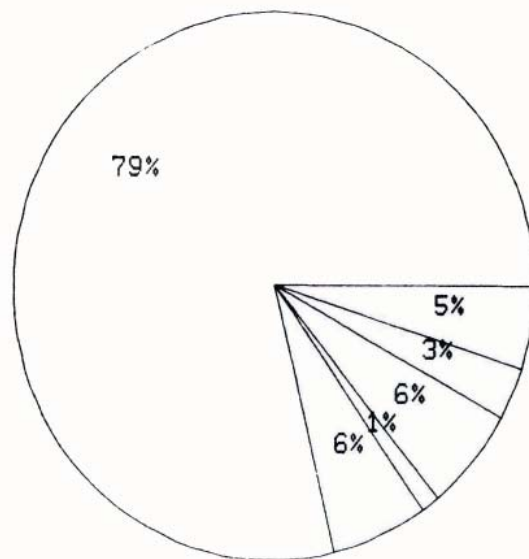
WASHINGTON STATE 1975-77 BIENNIAL BUDGET
JOINT LEGISLATIVE OPERATION BUDGET

DATE 01/08/76 DEPARTMENT OF SOCIAL AND HEALTH SERVICES TIME 13:41
DEPT SOC HLTH SVCS

TOTAL FUNDS
(DOLLARS IN THOUSANDS)

IM-MAINTENANCE GRANT	340,751	79%
IM-INTER CARE FACILI	26,028	6%
IM-OTHER ASSISTANCE	4,771	1%
IM-ELIGIBLE DETERMIN	26,250	6%
IM-SPECIAL PROJECTS	13,354	3%
IM-PROGRAM SUPPORT	21,463	5%

TOTAL 432,618 100%



PREPARED BY HOUSE WAYS & MEANS STAFF

WASHINGTON STATE 1975-77 BIENNIAL BUDGET
JOINT LEGISLATIVE OPERATION BUDGET

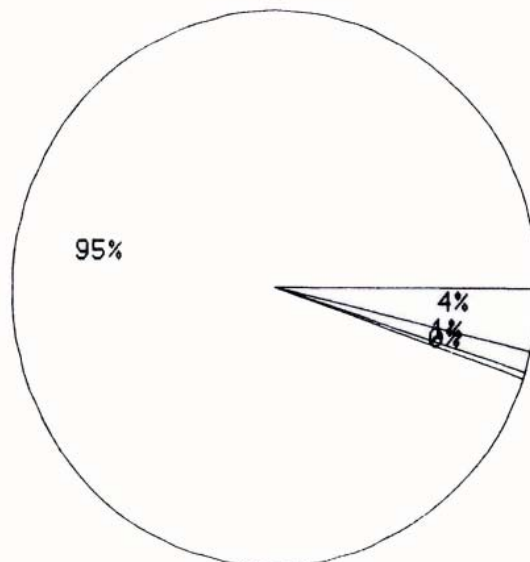
DATE 01/08/76 DEPARTMENT OF SOCIAL AND HEALTH SERVICES
DEPT SOC HLTH SVCS

TIME 13:43

TOTAL FUNDS
(DOLLARS IN THOUSANDS)

MA-GENRL MEDICL ASST	412,640	95%
MA-PREVTN OF BLINDNE	1,829	%
MA-ELIGIB DETERMN	5,318	1%
MA-PROGRAM SUPPORT	16,318	4%

TOTAL	436,105	100%
-------	---------	------



PREPARED BY HOUSE WAYS & MEANS STAFF

WASHINGTON STATE 1975-77 BIENNIAL BUDGET
GOVERNOR-OPERATING BUDGET RECOMMENDATION

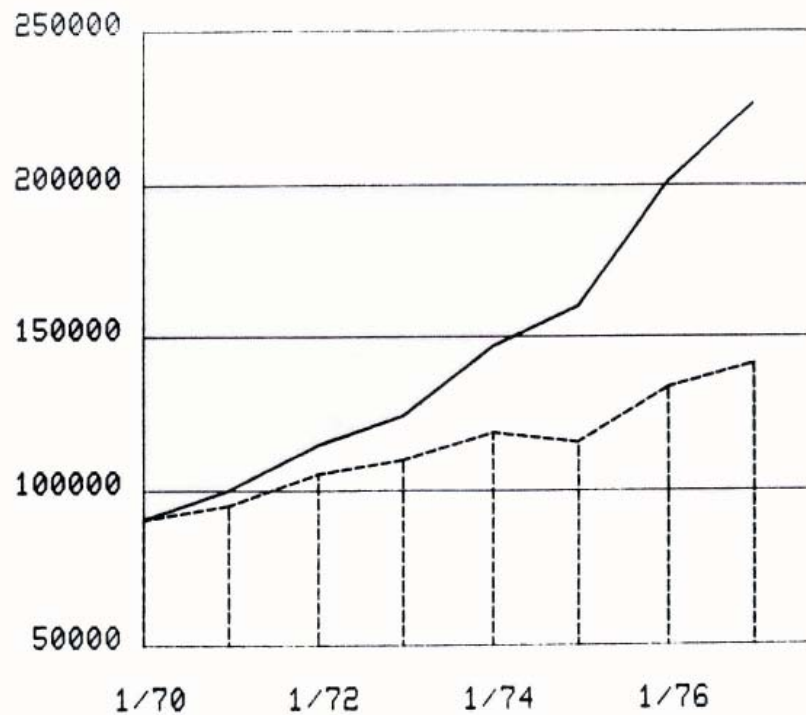
DATE 01/08/76 DEPARTMENT OF SOCIAL AND HEALTH SERVICES
MEDICAL ASSISTANCE

TIME 13:49

TOTAL FUNDS
(DOLLARS IN THOUSANDS)

1970	90,776
1971	99,948
1972	114,733
1973	124,298
1974	146,898
1975	159,899
1976	201,031
1977	226,657

SOLID LINE • ACTUAL DOLLARS
DOTTED LINE • 1970 DOLLARS

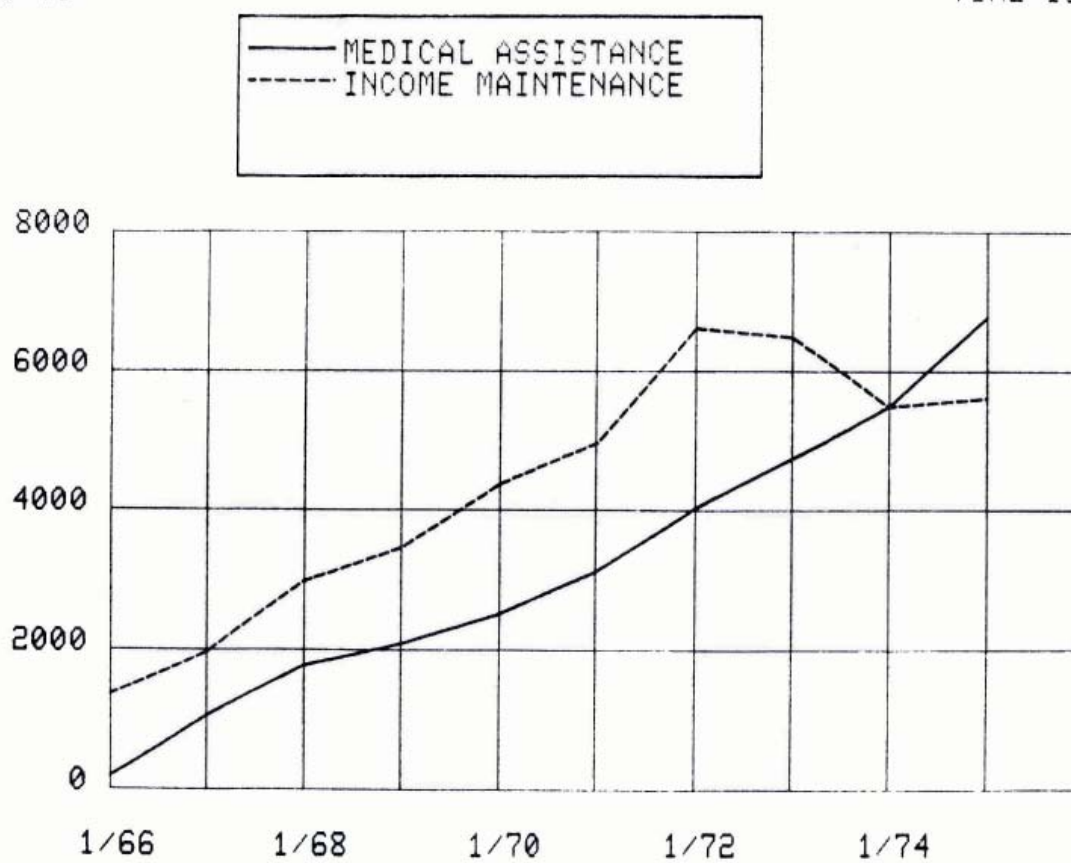


U.S. DEPARTMENT OF HEALTH EDUCATION, AND WELFARE

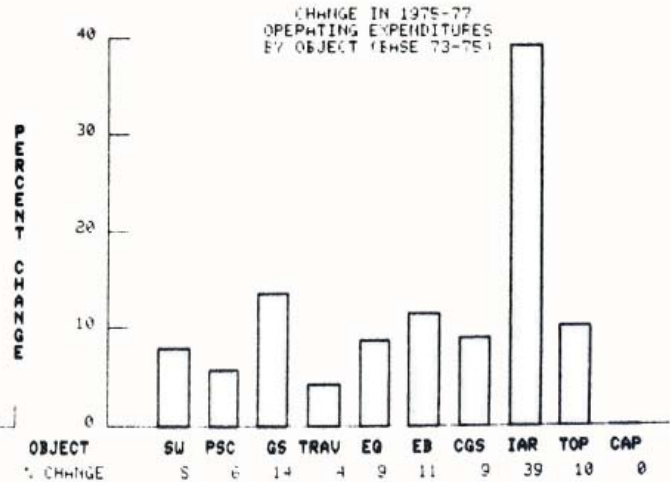
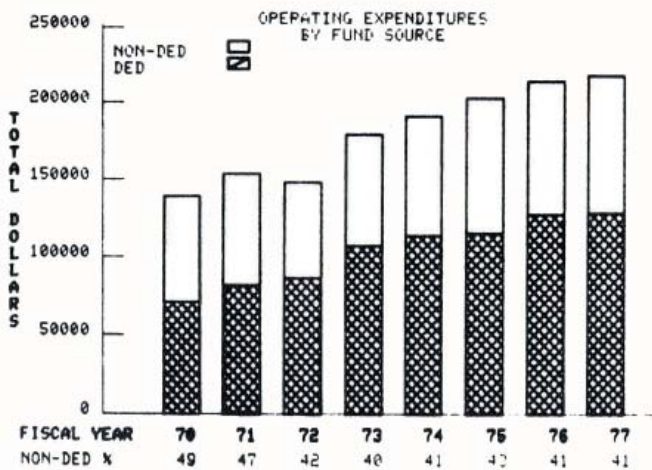
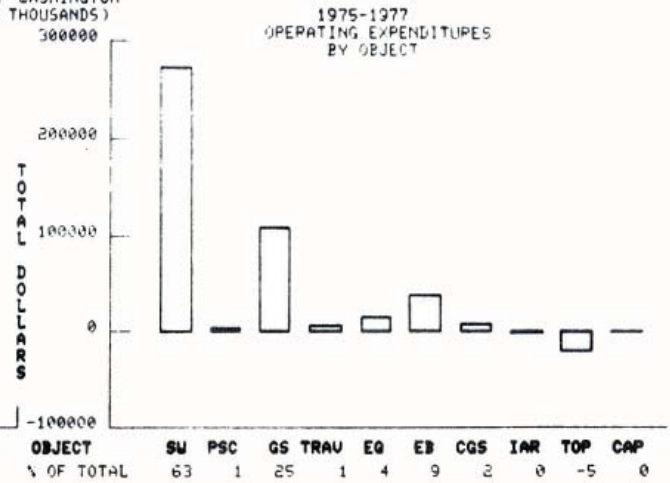
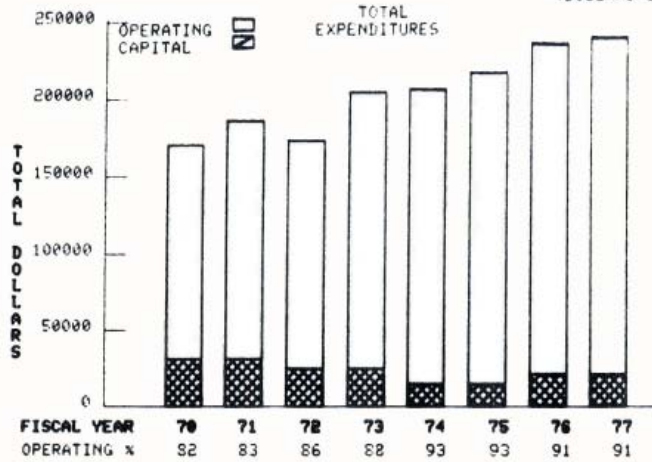
DATE 01/08/76

TIME 13:51

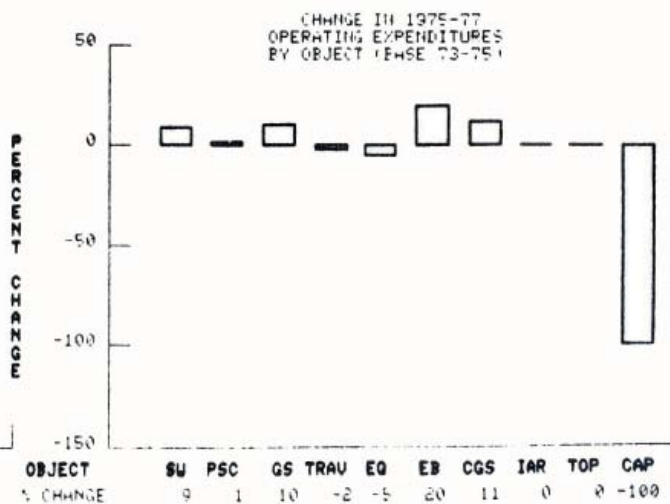
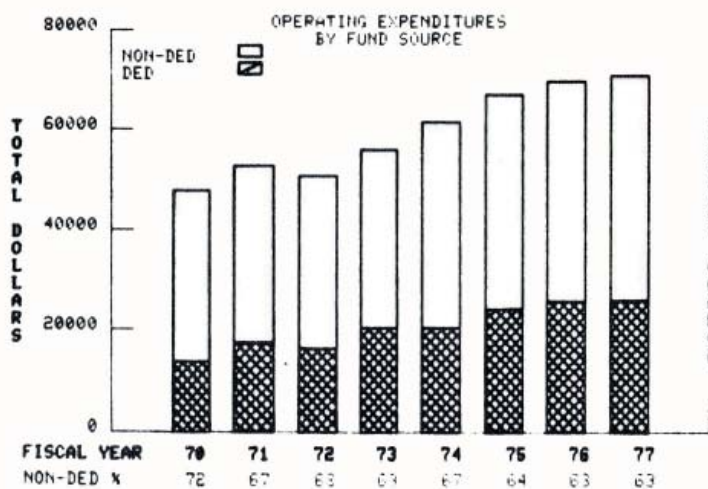
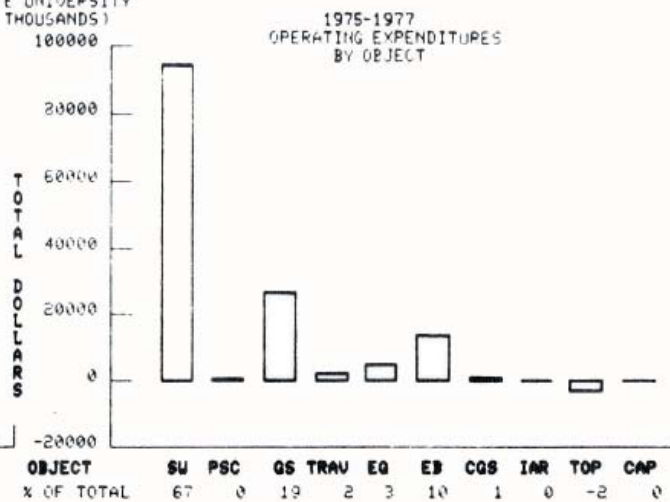
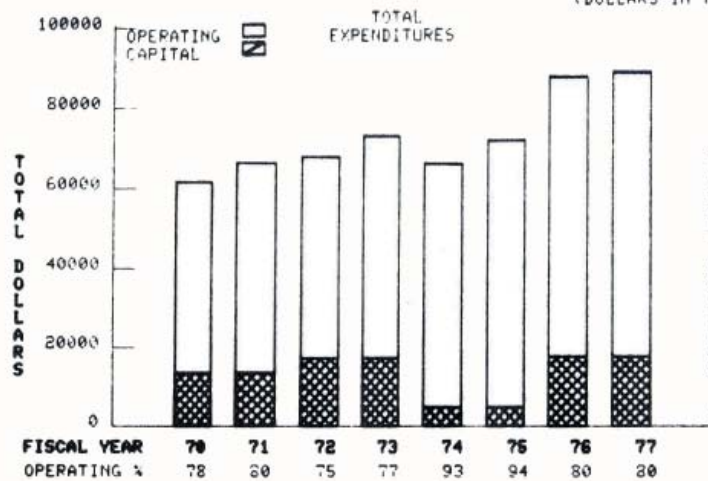
DOLLARS IN MILLIONS
TOTAL FEDERAL FUNDS



WASHINGTON STATE 1975-77 BIENNIAL BUDGET
GOVERNORS BUDGET
UNIVERSITY OF WASHINGTON
(DOLLARS IN THOUSANDS)



WASHINGTON STATE 1975/77 BIENNIAL BUDGET
GOVERNORS BUDGET
WASHINGTON STATE UNIVERSITY
(DOLLARS IN THOUSANDS)



WASHINGTON STATE 1975-77 BIENNIAL BUDGET
GOVERNOR-OPERATING BUDGET RECOMMENDATION

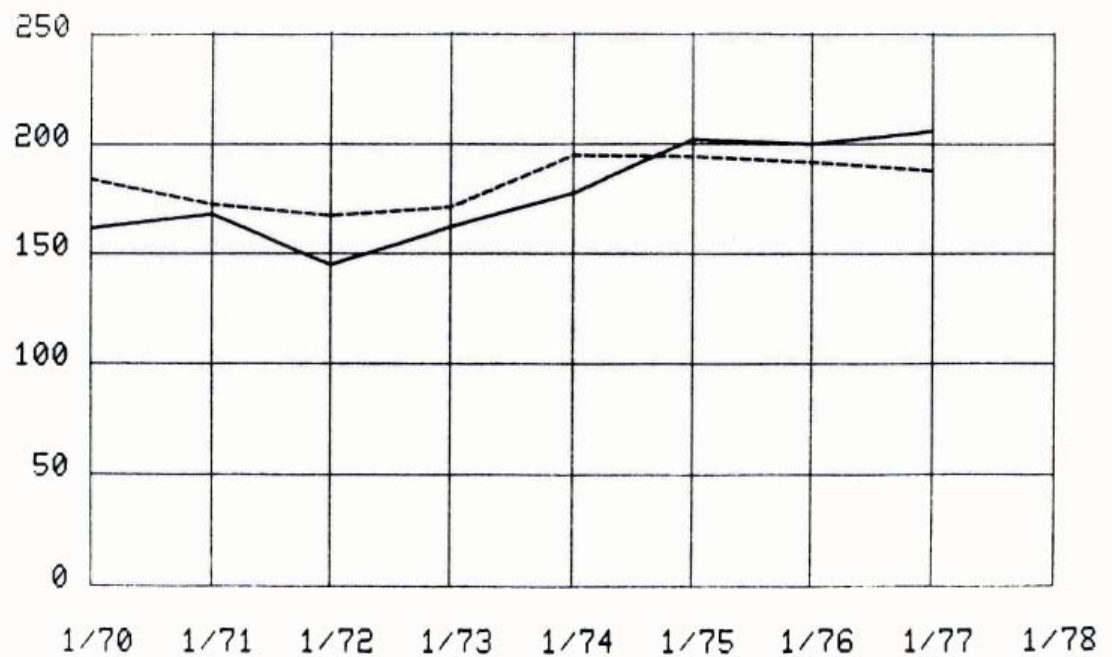
DATE 01/08/76

EDUCATION - COLLEGES & UNIVERSITIES

TIME 13:21

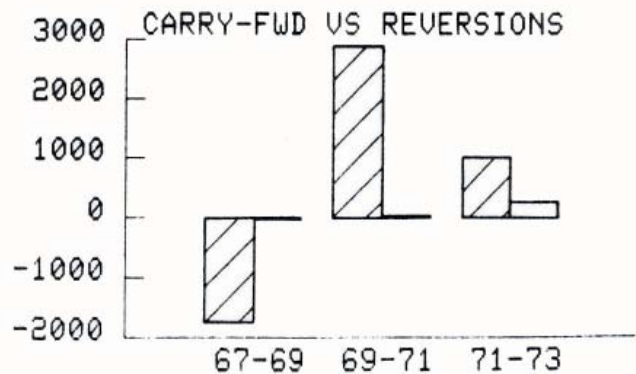
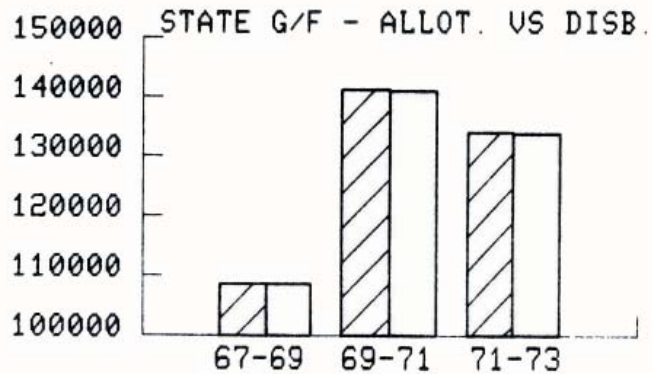
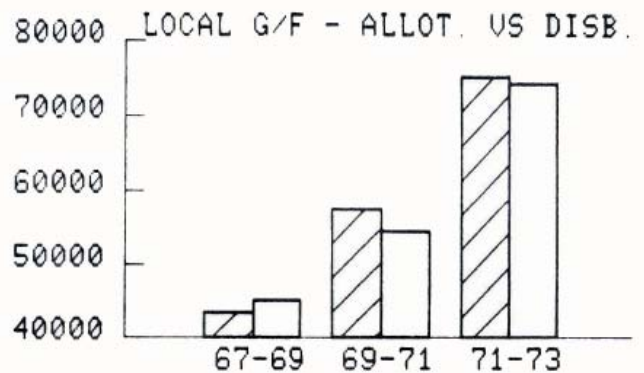
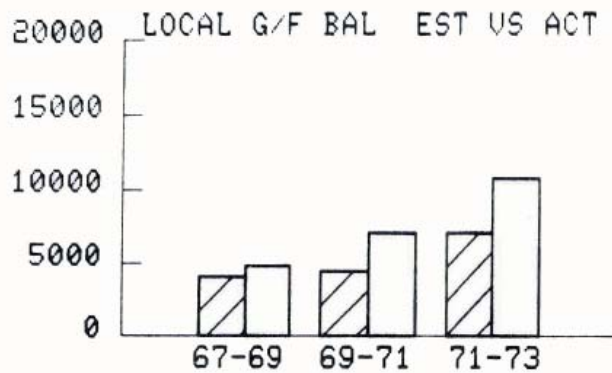
— UNIV OF WASHINGTON
- - - WASHINGTON STATE UN

UNIVERSITY OF WASHINGTON
WASHINGTON STATE
FUNDING
CREDIT
HOURS

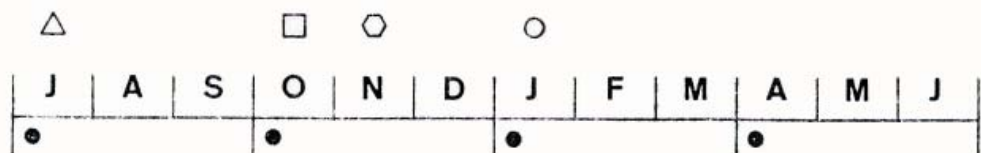
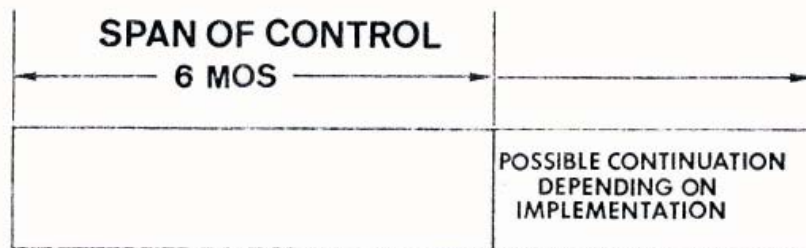


PREPARED BY HOUSE WAYS & MEANS STAFF

WASHINGTON STATE 1975-77 BIENNIAL BUDGET
LOCAL GENERAL FUND ANALYSIS
UNIVERSITY OF WASHINGTON

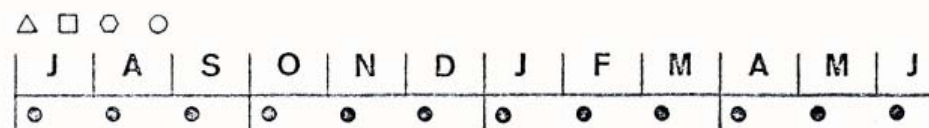
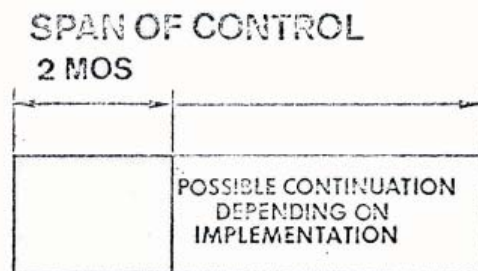
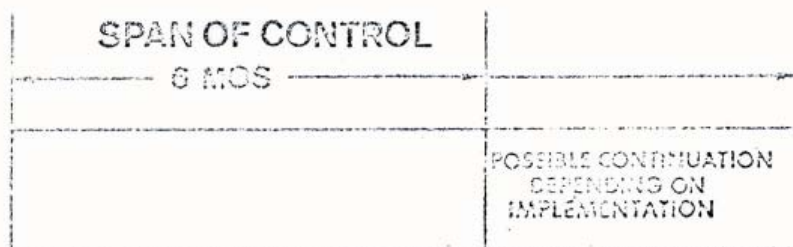


HOUSE WAYS & MEANS
WASHINGTON STATE



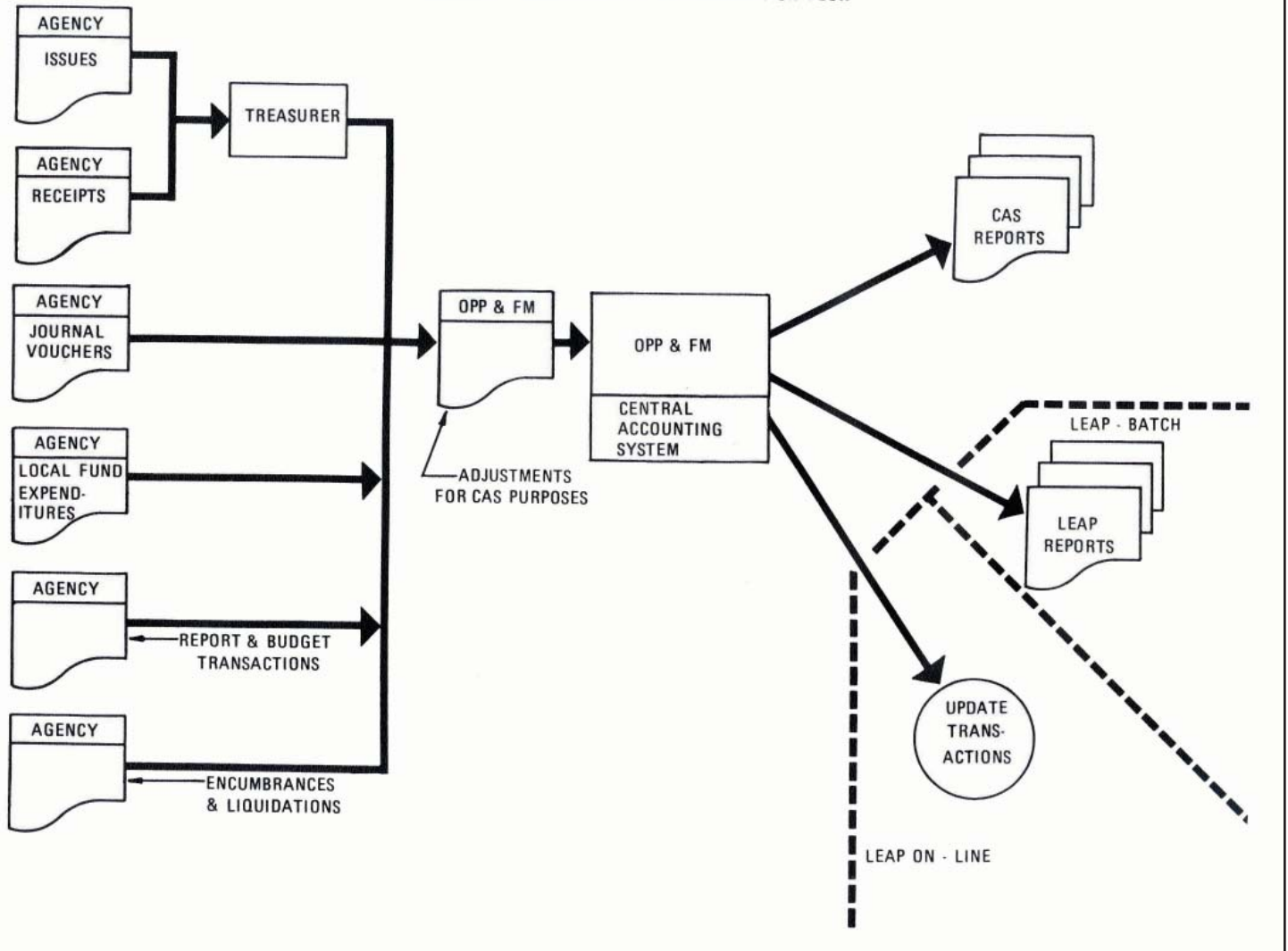
- Quarterly Report
- △ Problem
- Problem Identified
- ◇ Solution Implemented
- Results Reported

HOUSE WAYS & MEANS
WASHINGTON STATE



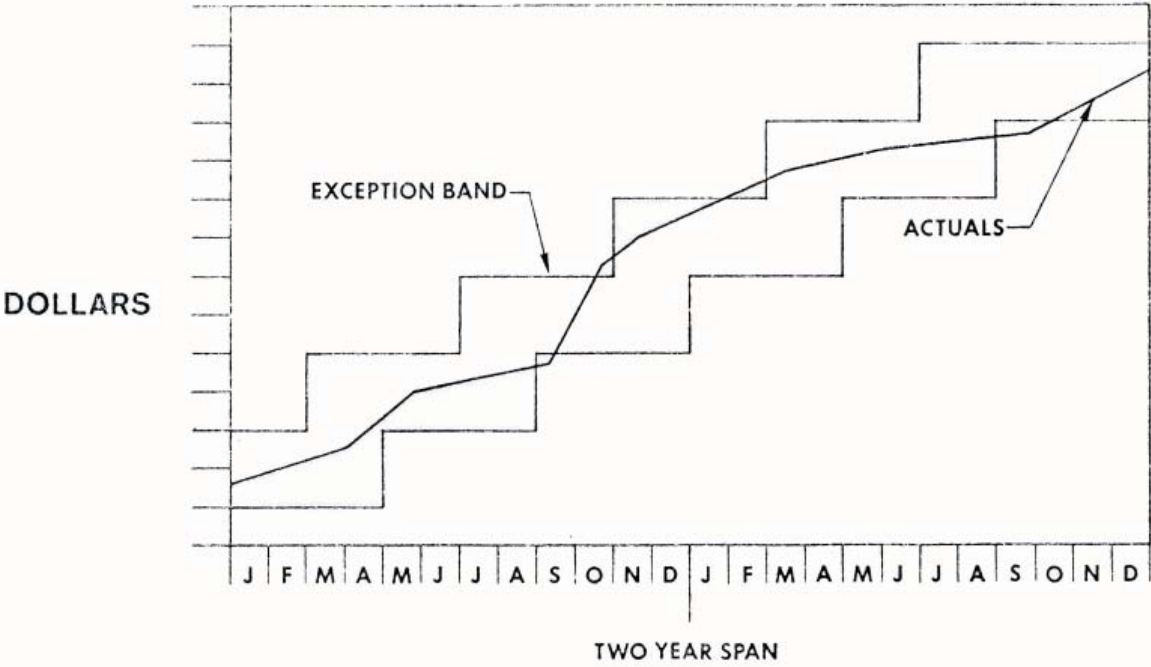
- Monthly Report
- △ Problem
- Problem Identified
- Solution Implemented
- Results Reported

CENTRAL ACCOUNTING SYSTEM INFORMATION FLOW



HOUSE WAYS & MEANS
WASHINGTON STATE LEGISLATIVE

WAGES, SALARIES, BENEFITS



PREPARED BY HOUSE - SENATE - HOUSE - SENATE

DATE 01/08/76

WASHINGTON STATE 1975/77 BIENNIAL BUDGET

TIME 13 29

DEPARTMENT OF SOCIAL AND HEALTH SERVICES
DEPT OF SOCIAL & HEALTH SERVICES

PROGRAM	GOV	HOUSE	SENATE	HOU-GOV DIFF	HOU-GOV PERCENT	SEN-GOV DIFF	SEN-GOV PERCENT	SEN-HOU DIFF	SEN-HOU PERCENT
ADULT CORR & REHAB	62754944	61563712	61242608	-1191232	-1 90	-1512336	-2 41	-321104	-52
JUVENILE REHAB	32706176	36012160	35776576	3305884	10 11	3070400	9 39	-235584	-65
MENTAL HEALTH	76715323	71774256	74707136	-4941072	-6 44	-2002192	-2 62	2932880	4 09
DEVELOP DISABILITIES	103100888	98403432	99922064	-4771256	-4 62	-3252224	-3 16	1513632	1 54
VETERANS' SERVICES	9838592	9729924	9879379	-108668	-1 10	40767	41	149455	1 54
INCOME MAINTENANCE	429112064	434450969	432993817	5338800	1 24	3231722	90	-1457152	-34
COMM SOCIAL SERVICES	112050672	112260176	114891136	169504	14	-3199536	-2 71	-3369040	-2 95
MEDICAL ASSISTANCE	427627680	429422505	432950041	1740800	41	5262336	1 23	3521536	82
PUBLIC HEALTH	55550032	54957312	55633104	-592720	-1 07	53072	15	675792	1 23
VOCATIONAL REHAB	41656224	42360656	42860640	704432	1 69	1204416	2 89	499924	1 18
ADMIN & SUPP SERVS	57733272	73640256	59471168	15906384	27 55	1737296	3 01	-14169028	-19 24

SOURCE

TOTAL FUNDS	1415026176	1430586708	1420327765	15560448	1 10	5301504	37	-10258944	-72
GENERAL FUND-STATE	795728296	787234095	788522798	-8494848	-1 07	-7206144	-91	1282704	16
GEN FUND-FEDERAL	611355616	636411172	624363813	24555522	4 01	12508160	2 04	-12047360	-1 89
GOV EMERG FUND									
GEN FUND-LOCAL	2441126	6941124	2441126	4499998	184 34			-4499998	-64 83
GEN FUND-ST UNANTI									
GEN FUND-LOC UNANTI									
CONTINGENT REC -ST									
CONTINGENT REC -FED									
CONTINGENT REC -LOC									
SPEC REV ACTS									
SP REV FUND-LOCAL	5000000		5000000	-5000000	-100 00			5000000	

WASHINGTON STATE 1975-77 BIENNIUM BUDGET
COMPARISON OF OPERATING BUDGET PROPOSALS

STATE BUDGET TOTAL
DSHS TOTAL
(DOLLARS IN THOUSANDS)

