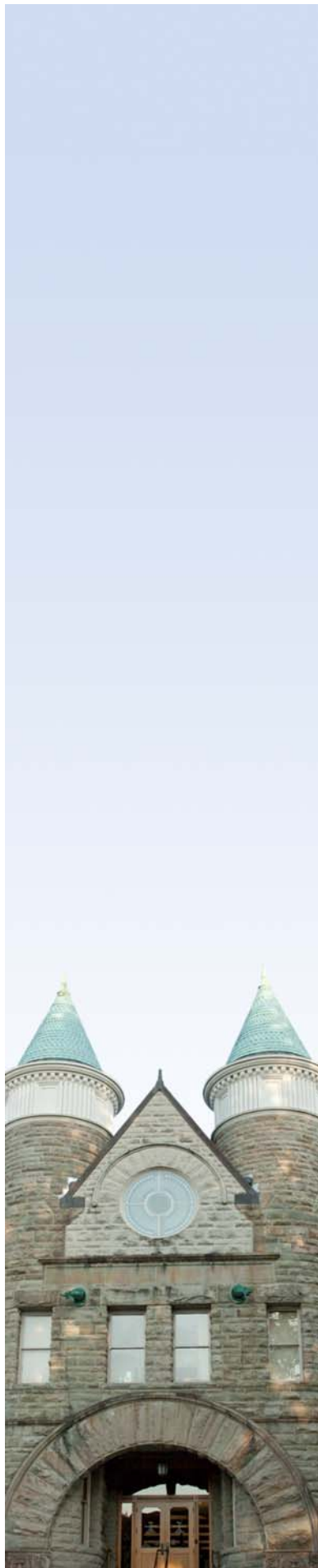


REPORT TO THE LEGISLATURE

Educating English Language Learners in Washington State 2010–11

December 2011



Randy I. Dorn
State Superintendent
of Public Instruction

Randy I. Dorn
Superintendent
of Public
Instruction

Ken Kanikeberg
Chief of Staff

Bob Harmon
Assistant
Superintendent
Special
Programs,
Secondary
Education,
School
Improvement,
and Federal
Accountability

Report to the Legislature

Educating English Language Learners in Washington State 2010–11

Prepared by

Helen Malagon, Director

Paul McCold, Administrative Program Specialist

Julie Hernandez, Programmer/Systems Analyst, Migrant
Student Data and Recruitment

Migrant and Bilingual Education
Office of Superintendent of Public Instruction
Helen Malagon

OSPI provides equal access to all programs and services without discrimination based on sex, race, creed, religion, color, national origin, age, honorably discharged veteran or military status, sexual orientation including gender expression or identity, the presence of any sensory, mental, or physical disability, or the use of a trained dog guide or service animal by a person with a disability. Questions and complaints of alleged discrimination should be directed to the Equity and Civil Rights Director at (360) 725-6162 or P.O. Box 47200 Olympia, WA 98504-7200.

Table of Contents

List of Tables	5
List of Figures	6
Abbreviations	8
Acknowledgements	9
Executive Summary	10
I. Introduction.....	11
Background.....	11
Washington’s Program of ELLs	14
Objectives, Scope, and Methodology	14
II. Program Funding and Expenditures.....	15
Program Funding	15
III. Staffing and Instruction	16
Types of Staff.....	16
Qualifications and Training of Program Staff.....	17
Instructional Models and Instructional Strategies	18
Program Model Descriptions	19
Instructional Strategies	20
Effectiveness of Strategies	21
IV. Students Served.....	22
Program Eligibility.....	22
Total ELL Student TBIP Enrollment	22
Distribution of ELL Students.....	23
Summary of District Reports	24
Grade Levels of Students Served.....	26

V. Languages Spoken	29
Number of Languages Among Districts	29
Major Languages	30
VI. Length of Program Participation	33
Status of Students Served	33
VII. English Language Proficiency and Transition Experience	36
VIII. Language Proficiency and Academic Performance.....	41
Statewide Academic Assessment Results.....	41
VIII. Bibliography	44
Appendix A – Languages Spoken by Language.....	45
Appendix B – Languages Spoken by District.....	47
Appendix C – TBIP Enrollments by Districts	65
Appendix D – Length of Program Participation by District.....	70
Appendix E – Making Progress and English Language Proficiency Attainment.....	75
Appendix F – Length of Stay Placement Level of English Proficiency by District ..	83

List of Tables

Table A-1: Languages Spoken by Language	45
Table A-2: Languages Spoken by Frequency	46
Table E-1: Percentage Making Gains	75
Table E-2: Percentage Achieving Proficiency	79

List of Figures

Figure 1-1: Percent ELLs of Total Enrollments by District	12
Figure 1-2: Number of ELLs by District.....	13
Figure 2-1: Growth in State Funding for the TBIP by School Year.....	15
Figure 2-2: Program Expenditures	16
Figure 3-1: ELL Student/Program Staff Ratios by School Year	17
Figure 3-2: Five-Year Staffing Trends (in FTEs) by School Year	17
Figure 3-3: Professional Development Activities	18
Figure 3-4: Five-Year Enrollments by Program Model by School Year.....	19
Figure 4-1: ELLs as a Percentage of Total Students by School Year.....	23
Figure 4-2: Number of Districts with a TBIP for ELLs by School Year	24
Figure 4-3: Districts With at Least 25 Percent ELL Enrollment.....	25
Figure 4-4: Districts With 1,000 or More ELLs Enrolled by School Year	26
Figure 4-5: Total ELL Enrollment by Grade.....	27
Figure 4-6: Total ELLs and New to Program Enrollment by Grade	28
Figure 5-1: Top 25 Languages	29
Figure 5-2: One-Year Change in Enrollment by Major Language Group	30
Figure 5-3: Districts With 20 or More Languages	31
Figure 5-4: Districts With at Least 95 Percent Spanish Speaking ELLs.....	32
Figure 6-1: Student Status Definition	33
Figure 6-2: Status of Students Served by School Year (Distinct Count).....	34
Figure 6-3: Number of Distinct ELLs Served by Time in Program	35
Figure 6-4: Average Number of Years in TBIP	35
Figure 6-5: Average Number of Years in TBIP	36

Figure 7-1: WLPT-II Results by Grade and Proficiency Level.....37

Figure 7-2: WLPT-II English Proficiency Levels by School Year.....38

Figure 7-3: WLPT-II Results by Grade and Proficiency Level.....38

**Figure 7-4: Percentage of Students Making Progress in English Proficiency by
Grade and School Year.....39**

**Figure 7-5: Trend in the Percentage of Students Making Progress in English
Proficiency by Language Level40**

**Figure 8-1: Percentage Meeting MSP/HSPE by WLPT-II English Proficiency
Levels42**

Figure 8-2: WLPT-II Transitional Level and MSP/HSPE Reading Performance.....42

Figure 8-3: WLPT-II Transitional Level and MSP/HSPE Writing Performance.....43

Figure 8-4: WLPT-II Transitional Level and MSP/EOC Math Performance43

Figure 8-5: WLPT-II Transitional Level and MSP/HSPE Science Performance.....43

Abbreviations

AMAO	Annual Measurable Achievement Objectives (Title III)
CALLA	Cognitive Academic Language Learning Approach
CEDARS	Comprehensive Education Data and Research System
CSPR	Consolidated State Performance Report
DBE	Developmental Bilingual Education (Late Exit)
ELD	English Language Development
ELL	English Language Learner
ELP	English Language Proficiency
ESEA	Elementary and Secondary Education Act
ESL	English-as-a-Second Language
FTE	Full-time Equivalent
GLAD	Guided Language Acquisition Design
HSPE	High School Proficiency Exam
MSDR	Migrant Student Data and Recruitment
MSP	Measurements of Student Progress
NCLB	No Child Left Behind
OSPI	Office of Superintendent of Public Instruction
SI	Sheltered Instruction (Content-Based ESL)
SIOP	Sheltered Instruction Observation Protocol
TBE	Transitional Bilingual Education (Early Exit)
TBIP	Washington State Transitional Bilingual Instructional Program
WLPT-II	Washington Language Proficiency Test

Acknowledgements

This report was prepared with help from the Migrant Student Data and Recruitment Office, as well as from several departments of the Office of Superintendent of Public Instruction. Contributors include Steve Shish and Ramona Garner.

Executive Summary

[The Transitional Bilingual Instruction Act of 1979](#) provides for the Transitional Bilingual Instruction Program (TBIP) to meet the needs of children who come from homes where English is not the primary language spoken. English language learners represent 98,472 of the statewide enrollment and showed an increase of 5,275 students from the previous year.

The TBIP provides temporary support services until English language learners can develop English language skills and meet the exit criteria established by the state. Approximately 20 percent of English language learners transitioned out of the TBIP in 2010–11. The Washington Language Proficiency Test (WLPT) measures English language proficiency in reading, writing, listening, and speaking. It is administered to students annually. Results from this assessment determine a student's continued eligibility or transition from TBIP.

The 2011–13 Operating Budget (Second Engrossed Senate House Bill 1087–Section 514), expands the Office of Superintendent of Public Instruction's responsibility to annually report to the Senate and House of Representatives Ways and Means and Education committees measurable changes in proficiency, time-in-program, and transition experience for students who participate in the TBIP. Sections VI through VIII provide the data for this new requirement.

Data from 2005–2006 to 2010–2011 show the median number of years of time-in-program for English Language Learners (ELLs) has decreased from 3.02 to 2.82 years. ELLs meeting the transition level increased by 8 percent in 2010–2011, and 78 percent of ELLs made progress in attaining English proficiency, an increase of 11 percent during the same period. A total of 208 languages were represented in the 2010–11 school year. Spanish was the primary language spoken by 67 percent of ELLs. Nineteen percent spoke Russian, Vietnamese, Somali, Ukrainian, Chinese, Korean, Tagalog, or Arabic.

In the 2010–11 school year, the state provided \$79.6 million in additional funding for services to English language learners. This was a 5.9 percent increase from 2009–10. Ninety-six percent of program funding is primarily used for salaries and benefits of instructional staff at the district and building level. The 2010–11 school year shows a 6.1 percent increase in teacher FTE and a 1.5 percent decrease in FTE instructional aides.

I. Introduction

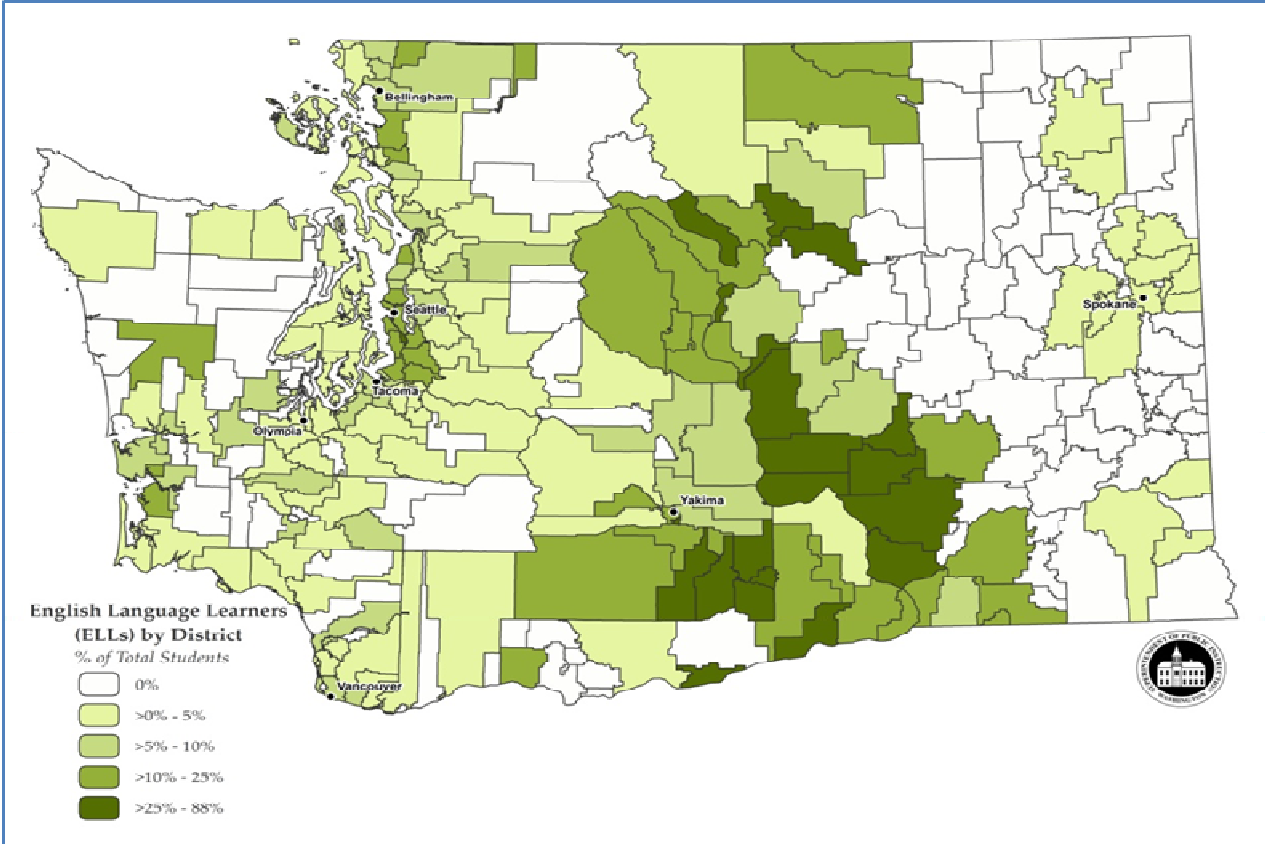
Background

According to estimates from the United States (U.S.) Census Bureau's American Community Surveys, Washington State ranks tenth (10th) in diversity in the U.S. and is among twelve states with the highest English language learners (ELLs) student enrollment. State data reported through the Consolidated State Performance Report (CSPR) estimated that 5,318,164 ELLs were enrolled in the nation's public schools (pre-K through Grade 12) for the 2007–08 school year.

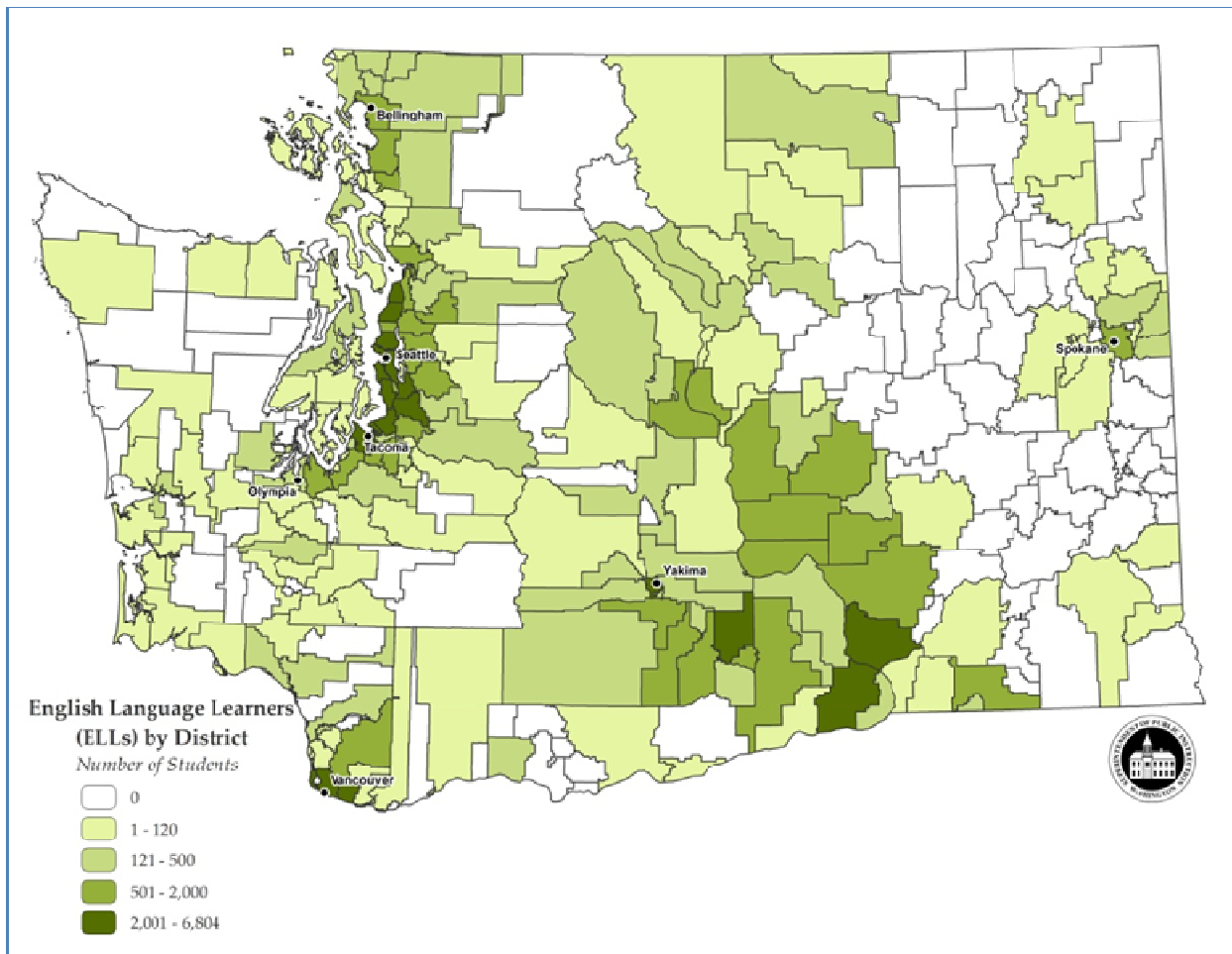
Some ELLs are recent immigrants while others are born in the U.S. The education level, family socioeconomic status, and cultural background vary greatly among this population. Students coming from the same country may speak different languages or dialects, and differences may exist even within language groups. Thus, generalizations about ELLs may mask background characteristics that are important when designing appropriate curricula and instruction.

In the 2010–11 school year, the state's Transitional Bilingual Instructional Program (TBIP) enrollment showed a 5.7 percent increase from the previous school year. Enrollments continue to concentrate in the urban areas along the Interstate 5 corridor and rural areas such as the Yakima Valley. Figures 1-1 and 1-2 reflect a geographical distribution of Washington's ELL population.

Figure 1-1: Percent ELLs of Total Enrollments by District



**Figure 1-2: Number of ELLs by District
(School Year 2010–11)**



When students with little or no previous exposure to the English language enter the public school system, they are most often unable to fully benefit from instruction in English and may experience a high risk of academic failure.

The Washington State Legislature requested educational research on effective practices for ELLs. The report published on November 1, 2008, *What Teachers Should Know About Instruction for English Language Learners: A Report to Washington State*, provides educational research on effective instructional practices for ELLs that identifies a series of 14 key principles teachers of ELLs should know. The detailed report is available on the Office of Superintendent of Public Instruction's (OSPI) bilingual website and can be accessed at <http://www.k12.wa.us/MigrantBilingual/pubdocs/NWREL-Report-ELLInstruction-Nov2008.pdf>.

Washington's Program for ELLs

The state's Transitional Bilingual Instruction Program (TBIP), which is codified in RCW 28A.180, creates a program to provide additional instructional supports for ELLs. [Chapter 392-160 WAC](#) authorizes OSPI to create rules for implementation of the TBIP.

The 2011–13 Operating Budget (Second Engrossed Senate House Bill 1087–Section 514) expanded OSPI's responsibility to report measurable changes in English language proficiency, time-in-program, and transition experience for ELLs.

Objectives, Scope, and Methodology

This report includes historical program information and provides information on the following areas of the program for the 2010–11 school year:

- Staffing and instruction.
- ELL enrollment patterns and pattern changes over time.
- Languages spoken by students in the program.
- Length of participation (time) in program services.
- ELLs' academic and linguistic performance.

Data for the report were provided by districts with an approved program during the 2010–11 school year. Assessment data was provided by OSPI's assessment department. Historical data reported in previous years were also used. The report provides data collected at the state and district levels.

This is a transitional year for OSPI data collection. It is anticipated that for the 2011–12 school year, districts will only enter student enrollment data into the Comprehensive Education Data and Research System (CEDARS), thus avoiding the necessity of dual data entry.

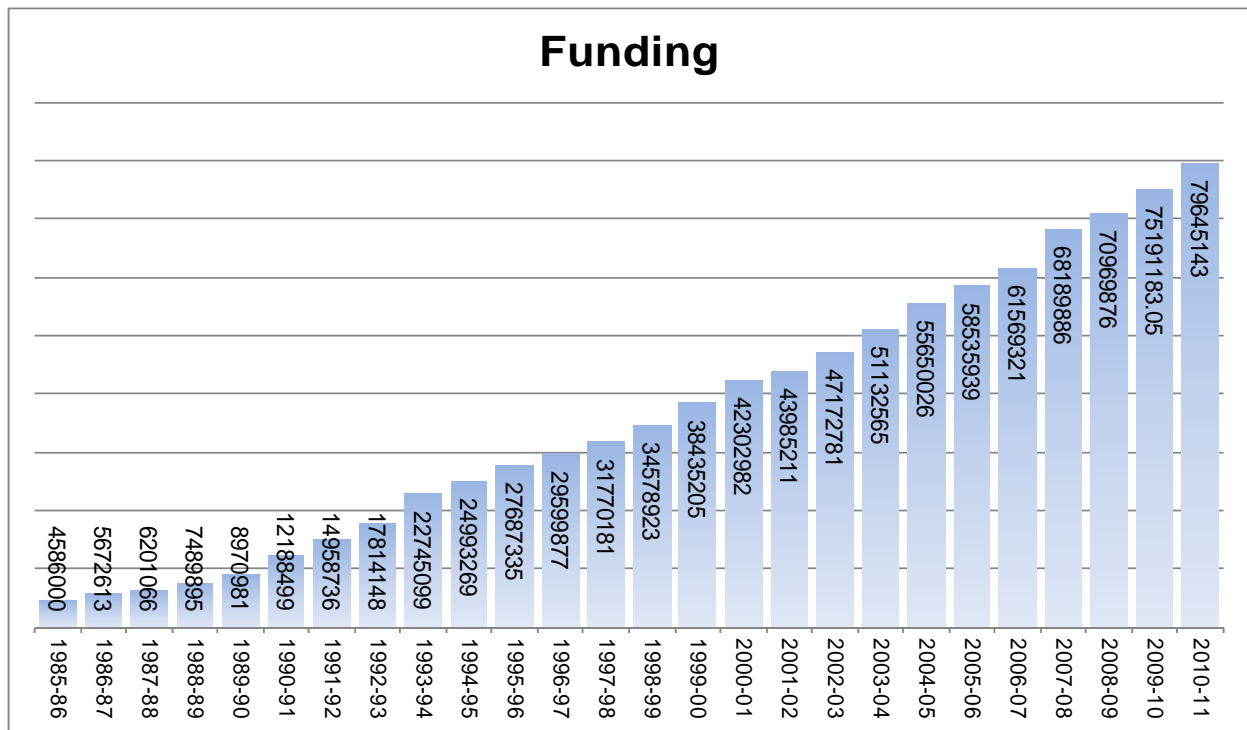
TBIP guidelines in a question and answer format guide and assist districts with the legal and programmatic requirements of TBIP and Title III. They are available at: <http://www.k12.wa.us/MigrantBilingual/pubdocs/TBIPProgramGuidelines.pdf>. The guidelines include procedures for identification, assessments, and program models.

II. Program Funding and Expenditures

Program Funding

In addition to basic education funding, districts receive state funds to provide supplemental instructional support to ELLs. Funding to districts is based on an October through May average bilingual headcount. In the 2010–11 school year, the state provided a per pupil allocation of \$885.91 for an average count of 89,918 ELLs¹. In the 2010–11 school year, total bilingual expenditures were \$92.1 million, of which \$79.6 million were from state resources. This was a 5.9 percent increase from the previous year. Figure 2-1 shows the growth of state funding for the program over the last 25 years.

Figure 2-1: Growth in State Funding for TBIP by School Year



Current year source: Report 1191SN OSPI Apportionment for Aug 31, 2011.

Districts supplement their state and federal program support with local levy funds. In the 2010–11 school year, districts reported contributing approximately \$12.5 million beyond state TBIP funding to provide instructional services to ELLs. However, accurate data that reflects actual

¹ This was the *average* number of students enrolled in the program on each of eight monthly count dates, October through May, as reported by districts on the P223-H report. The *total* number of ELL students served by the program in 2010–11 was 97,472. See Section III for more information on enrollment trends.

district and levy funds used to support local programs for ELLs is not available because these amounts are coded to programs other than Program 65 (the designation for TBIP).

In the 2010–11 school year, nearly all of the TBIP funding for educating ELLs was used for instruction-related activities, with most of the funding dedicated to staffing. Sixteen percent of the total statewide program expenditures reported was supplemental to state funding. Figure 2-2 shows the amounts and proportions spent on various categories in the 2010–11 school year.

**Figure 2-2: Program Expenditures
(School Year 2010–11)**

Type of Program Expenditures	Total Expenditures	Percent of Total
Salaries-certificated staff	\$ 39,505,091.84	43%
Salaries-classified staff	\$ 24,778,435.17	27%
Benefits	\$ 24,305,632.51	26%
Instructional Sulpplies	\$ 2,145,129.56	2%
Other	\$ 1,437,579.48	2%
Total	\$ 92,171,868.56	100%

This data is collected from the F-196 Annual Financial Statements, Program 65.

III. Staffing and Instruction

ELLs require teachers knowledgeable and skilled in first/second language acquisition theory, English-as-a-Second Language (ESL), and sheltered instruction methodologies as well as English language development state standards. One significant obstacle facing their education is the shortage of properly trained teachers.

Districts report challenges in recruiting ESL/bilingual endorsed teachers or in training the number of teachers needed to meet the linguistic and academic needs of the growing number of ELLs.

Types of Staff

In the 2010–11 school year, 2,601 staff provided instruction and support in the TBIP. The number of staff charged to the TBIP budget (Program 65) decreased by 1.6 percent from the previous year, although total staff FTE increased by 2.2 percent, the larger increase in teachers by 6.2 percent . As reflected in the tables (Figure 3-1 and 3-2), districts continued to rely heavily on instructional aides to provide instruction to ELLs.

Instructional aides represented about 51 percent of the total FTEs in the 2010–11 school year, a decrease of 1.8 percent from the previous year. Figure 3-1 shows various ratios for the 2010–11 school year. When more instructional aides are involved in the program, the ELL student per aide ratio is lower than the ratio of ELL students per teacher.

Figure 3-1: ELL Student/Program Staff Ratios by School Year

Staff & Student Ratios	2009–10			2010–11		
	Teachers	Aides	All Staff	Teachers	Aides	All Staff
Total Staff	964	1,678	2,642	967	1,634	2,601
Staff FTE	529	583	1,113	562	575	1,137
Student/staff ratio <i>Based on total students served and total staff</i>	95	55	35	102	60	38
Student/staff ratio <i>Based on average number of students funded and total staff</i>	88	51	32	91	54	34
Student/staff ratio <i>Based on average number of students funded and FTE staff</i>	160	145	76	156	153	77

This data is collected from Final School District Personnel Summary Report S275, Table 11, Program 65 (TBIP), duty routes 31, 32, 33, and 91. Staff data includes staff funded by TBIP and other funding sources. Student counts from Report 1251H Summary of Head-count Enrollment as Reported on P223. FTEs reflect rounding and may not sum to total.

Qualifications and Training of Program Staff

As reflected in Figure 3-2, instructional aides continue to provide a significant percentage of the instructional support to ELLs. Therefore, effective supervision of instructional aides and coordination of program services are essential to student outcomes.

Figure 3-2: Five-Year Staffing Trends (in FTEs) by School Year

Type of Staff (FTE)	2006–07	2007–08	2008–09	2009–10	2010–11
Teachers	521	495	519	529	562
Percent of Total FTEs	49%	48%	49%	48%	49%
Instructional Aides	538	545	545	583	575
Percent of Total FTEs	51%	52%	51%	52%	51%
<i>Total FTEs (teachers + aides)</i>	1,059	1,040	1,064	1,113	1,137

In the 2010–11 school year, seventy-nine percent of the 192 districts with a TBIP, provided ESL and bilingual education in-service training to teachers and instructional aides (Figure 3-3). English language development training provides teachers with instructional practices needed to differentiate instruction for ELLs.

Many teachers and instructional aides who teach ELLs are not funded by the TBIP, and data are not collected on the qualifications of these staff.

**Figure 3-3: Professional Development Hours of Training
(School Year 2010–11)**

Instruction	Instructional strategies for ELL students	Understanding and implementing ELL assessments	Understanding and implementing ELD and academic content standards	Alignment of the curriculum to ELD standards	Subject matter understanding for (Bilingual/ELL) teachers	Other	Total PD	Number of Districts
Teachers	20088	1373	1516	1943	890	89	25899	151
ESL/Bilingual Teachers	2083	965	218	467	731	37	4501	113
Principals	747	143	45	128	88	3	1154	99
Other Administrators	820	139	47	173	118	10	1307	95
Para-professionals	3535	991	245	198	177	54	5200	124
Other	1030	256	26	112	280	16	1720	86
Community	93	7	7	10	2	0	119	18
Parents	324	1	50	5	197	1	578	19
Total Participants	6549	1537	420	626	862	84	10078	705

“Other” category includes multicultural education, parent involvement, ELLs with disabilities, dual language training and Spanish to facilitate communication with parents.

Instructional Models and Instructional Strategies

Nationwide, a variety of instructional models and approaches have been implemented. These range from providing no instruction in the student’s primary language to providing instruction in both English and the student’s primary language.²

The TBIP legislation allows for one or more methods of instruction that are consistent with the requirements of state law. The legislation also stipulates that the language instruction curriculum must be tied to scientific-based research on teaching ELLs.

While the state legislated a transitional bilingual instruction program and research has found that students perform better when provided more intensive instruction in their primary language, only

² Wayne P. Thomas and Virginia P. Collier, *A National Study of School Effectiveness for Language Minority Student’s Long-Term Academic Achievement Final Report: Project 1.1*, Center for Research on Education, Diversity and Excellence, University of California-Santa Cruz, CA, 2002.

fourteen percent of students received primary language instruction in the 2010–11 school year. Thus, for the majority of ELLs, their instructional program is more accurately defined as an English-as-a-Second Language (ESL) program with instruction provided only in English. Figure 3-4 displays the number of students in each of the program models for the past five years.

Figure 3-4: Five-Year Enrollments by Program Model by School Year

Program Model	2006–2007	2007–2008	2008–2009	2009–2010	2010–2011
Sheltered Instruction (Content-based)	73,995	79,827	79,126	82,257	83,671
Developmental Bilingual-Late Exit	4,272	3,916	3,819	2,463	6,441
Transitional Bilingual-Early Exit	4,081	3,367	3,459	3,664	3,704
Dual Language	2,916	2,397	3,258	3,497	3,453
Newcomer Program	4	15	1,018	968	818
Parent Waiver	30	699	841	1,378	1,543
Total	85,298	90,221	91,521	94,227	99,630

Includes students served in more than one program model.

Program Model Descriptions

Dual language programs, also referred to as two-way bilingual education and two-way immersion, provide integrated language and academic instruction for native English speakers and native speakers of another language with the goals of high academic achievement, first and second language proficiency, and cross-cultural understanding (Christian, 1994).

Developmental bilingual education (DBE), also referred to as late-exit bilingual education (Ramirez, 1992), is an enrichment program that educates students using both English and their first language for academic instruction. DBE programs aim to promote high levels of academic achievement in all curricular areas and full academic language proficiency in the students' first and second languages.

Transitional bilingual education (TBE), also known as early-exit bilingual education (Ramirez, 1992), is the most common form of bilingual education for ELLs in the United States. TBE provides academic instruction in ELLs' primary language as they learn English.

Sheltered instruction (SI), also known as content-based ESL, is an approach used widely for teaching language and content to ELLs. In SI, academic subjects (e.g., science, social studies) are taught using English as the medium of instruction. SI is most often used in classes comprised solely of ELLs, although it may be used in classes with both native English speakers and ELLs when necessitated by scheduling considerations or by small numbers of ELLs. In Washington, this approach is most often associated with middle and high school ESL classes. ELLs at the elementary level, who receive push-in support from TBIP staff or limited pull-out in the context of a basic education grade-level classroom, would also fall under this model.

The Newcomer Program helps students acquire beginning English language skills along with core academic skills and knowledge and acculturate to the United States school system. Some programs have additional goals, such as developing students' primary language skills and preparing students for their new communities.

The Parent Waiver category includes students who are eligible for TBIP services, but whose parents have formally requested their child not participate. Although this is not a model of instruction, these ELLs are captured under this category because they are required to be tested on the annual Washington Language Proficiency Test-II (WLPT).

Instructional Strategies

With an increased emphasis on building the capacity of teachers to meet the needs of ELLs, many districts have identified instructional strategies for all teachers that enhance the quality of instruction in basic education classrooms with diverse learners. The professional development programs described below are specifically designed to provide teachers with the instructional strategies most effective in educating ELLs and are among the most commonly used in Washington to teach staff English language development strategies.

- Guided Language Acquisition Design (GLAD)—Project GLAD training provides research-based theory and practical, effective strategies for the development of academic language, literacy, academic achievement and cross-cultural skills of ELLs. Districts throughout Washington have supported cohorts of teachers to complete GLAD training as well as invested in key trainers at the district level to offer ongoing GLAD training and support.
- Sheltered Instruction Observation Protocol (SIOP)—SIOP is a valid and reliable, research-based observation instrument as well as a guide for planning instruction that focuses on the academic and linguistic needs of ELLs. The model is built on the premise that teachers possessing these skills will be prepared to provide ELLs with a better learning environment. Critical features of high quality instruction for ELLs are embedded within the SIOP model.
- Cognitive Academic Language Learning Approach (CALLA)—CALLA is a research-based instructional program that fosters the school achievement of students who are learning through the medium of a second language. This professional development program focuses on science and math.

Effectiveness of Strategies

Research on the effectiveness of different instructional approaches has demonstrated that the more instruction is provided in the student's primary language, the better the student's overall academic performance over time.³ Experts believe that developing proficiency in one language promotes the development of proficiency in a second language. Results from the analysis of student-level data that OSPI reported in 2000 were consistent with this conclusion.⁴ These findings indicate that more academic instruction needs to be given in the student's primary language rather than simply relying on English language instruction. There are indications that the shift to provide more academic instruction in the student's native language is occurring in our state.

To improve the effectiveness of the TBIP, OSPI has in place:

1. Standards and benchmarks for ELLs in reading, writing, listening, and speaking.
2. A statewide English language proficiency assessment for placement and annual testing (see section VI).
3. A system to track ELLs' academic progress through the use of a secure student identifier.

OSPI also updates the definitions of instructional program models to conform to national definitions used in research. The uniformity in definitions provides districts with more guidance to improve instructional program implementation.

³ See: Magda Costantino, *Reading and Second Language Learners—Research Report*, OSPI, April 1999; and Wayne Thomas and Virginia Collier, *School Effectiveness for Language Minority Students*, National Clearinghouse for Bilingual Education, The George Washington University, Washington, DC, December 1997. The effects of different instructional approaches may not be seen in the short-term since language acquisition in an academic context is a long-term process.

⁴ The average length of time ELL students spent in the program was less when they were receiving more intensive instruction in their primary language along with instruction in English. See Helen Malagon and Pete Bylsma, *Educating Limited-English-Proficient Students in Washington State*, OSPI, December 2000, pg. 16.

IV. Students Served

Program Eligibility

Program funding is intended for those students who qualify. Eligible students must have a primary language other than English *and* their English language skills must be sufficiently deficient or absent to impair learning in an all-English classroom setting. The program serves eligible students in grades K–12.

A two-phase process is used to identify potential ELLs:

1. The district must first identify students with a primary language other than English.
2. The student must be assessed to determine his/her level of English proficiency.

Students are eligible if they score at the limited English proficiency level on the WLPT-II *placement* test administered by the district. Continued eligibility is based on the results of the WLPT-II *annual* test, which measures their English language proficiency level in listening, speaking, reading, and writing. Eligibility ends when a student scores at the Transitional Level (Level 4) on the WLPT-II.

Washington showed a 5.7 percent increase in ELL enrollment in the 2010–11 school year, while total state enrollment declined slightly (-0.4 percent). As with previous years, ELLs are unevenly distributed across the state. Some districts served either a larger number or a higher percentage of ELLs than in the previous year, while other districts served fewer or no ELLs. Approximately 53 percent of all ELL students in the TBIP were enrolled in grades K–3. Of the 29 districts with more than 1,000 ELL students, 93 percent reported an increase in ELL enrollment.

Total ELL Student TBIP Enrollment

In the 2010–11 school year, the program served 91,469 distinct students (94,487 duplicate count). This number represents 1,952 (2.2 percent) more students than served in 2009–10. In the 2010–11 school year, the eight-month average number of ELLs funded for TBIP was 84,855. Student numbers in this report reflect the following:

- Distinct Count – Students counted only once regardless of multiple enrollments.
- Duplicate Count – Students counted once for each enrollment in one or more districts throughout the year.
- ELLs Funded – Number of students counted for funding on the P-223 district report, which excludes parent waivers.

- Head Count – Number of students enrolled on October 1st.

In the 2010–11 school year, ELLs served in the TBIP comprised 8.9 percent of the October 1st statewide student population. This was an increase of 0.4 percent from the previous year. The number of ELL enrollments in the state has increased by 15.4 percent since 2005–06 (see Figure 4-1).

Figure 4-1: ELLs as a Percentage of Total Students by School Year

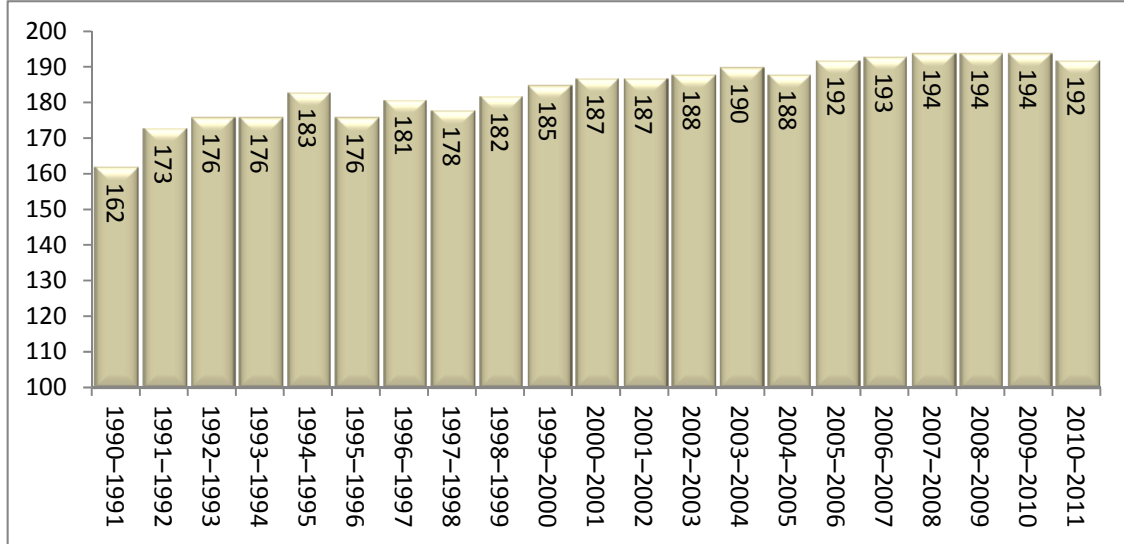
Year	Total Oct. 1 Enrollment	ELL Oct. 1 Head Counts	Percent ELL	Distinct ELL Enrollments
2004–2005	1,009,563	73,687	7.3%	82,613
2005–2006	1,020,081	76,213	7.5%	85,314
2006–2007	1,019,295	74,650	7.3%	83,463
2007–2008	1,021,834	80,590	7.9%	88,128
2008–2009	1,027,625	83,058	8.1%	90,450
2009–2010	1,024,721	86,417	8.4%	93,197
2010–2011	1,040,382	92,084	8.9%	98,472

Waived students are excluded.

Distribution of ELL Students

ELL students are not evenly distributed across the state (see Figures 1-1 and 1-2). Of Washington’s 295 districts, 192 had ELL enrollments in the 2010–11 school year. The number of districts reporting ELL enrollments has remained about the same for the past few years (Figure 4-2).

Figure 4-2: Number of Districts with a TBIP for ELLs by School Year



Summary of District Reports

Analyses of the 192 district reports show the following numbers:

- Twenty-four districts report ELLs represent at least 25 percent of the district headcount.
- Twenty-nine districts enrolled more than 1,000 ELLs and served 72 percent of all ELLs enrolled in the TBIP.
- Of those districts with more than 1,000 ELL students:
 - Spokane and Sunnyside experienced an increase of more than 10 percent.
 - Everett and Toppenish reported a decline in ELL enrollment.
- Thirty districts received funding for less than ten students and 65 districts for less than 50 students, while 49 districts had 500 or more ELL students.
- Figure 4-3 shows districts with the highest percentage of ELLs served in the 2010-11 school year.

**Figure 4-3: Districts With at Least 25 Percent ELL Enrollment
(School Year 2010–11)**

District	Total Enrollment	TBIP Enrollment	% TBIP
Palisades	16	14	88%
Wahluke	1,523	1,282	84%
Orondo	187	103	55%
Roosevelt	30	15	50%
Bridgeport	800	341	43%
Royal	1,530	650	43%
Mabton	927	389	42%
Brewster	962	398	41%
Paterson	78	30	39%
Quincy	2,481	956	39%
Tukwila	2,930	1,101	38%
Othello	3,811	1,425	37%
Granger	1,522	560	37%
North	2,037	740	36%
Pasco	15,158	5,465	36%
Manson	572	202	35%
Warden	1,002	349	35%
Toppenish	3,616	1,228	34%
Grandview	3,596	1,179	33%
Sunnyside	6,234	1,966	32%
Yakima	14,889	4,253	29%
Union Gap	603	159	26%
Wapato	3,376	856	25%
Mount	6,399	1,603	25%

Student counts on October 1, 2010.

Twenty-nine districts enrolled more than 1,000 ELLs during the 2010–11 school year and these districts collectively served 72 percent of all ELLs enrolled in the TBIP statewide. Of these districts with more than 1,000 ELL students, 27 showed gains in enrollment that ranged from one to 14 percent.

Figure 4-4: Districts With 1,000 or More ELLs Enrolled by School Year

District	2010–2011	2009–2010	Percent Increase
Auburn	1,998	1,838	8%
Bellevue	1,966	1,927	2%
Clover park	1,458	1,331	9%
Edmonds	2,259	2,145	5%
Everett	1,969	2,032	-3%
Evergreen (Clark)	2,386	2,242	6%
Federal Way	3,395	3,247	4%
Grandview	1,267	1,163	8%
Highline	4,160	4,055	3%
Kennewick	2,209	1,995	10%
Kent	4,880	4,510	8%
Lake Washington	1,583	1,489	6%
Mount vernon	1,686	1,598	5%
Mukilteo	2,551	2,422	5%
Northshore	1,058	1,031	3%
Othello	1,512	1,409	7%
Pasco	5,774	5,445	6%
Quincy	1,023	963	6%
Renton	2,445	2,331	5%
Seattle	6,804	6,454	5%
Spokane	1,492	1,326	11%
Sunnyside	2,147	1,857	14%
Tacoma	2,583	2,437	6%
Toppenish	1,308	1,337	-2%
Tukwila	1,220	1,204	1%
Vancouver	2,356	2,207	6%
Wahluke	1,321	1,309	1%
Wenatchee	1,746	1,671	4%
Yakima	4,532	4,305	5%

Count is distinct students per district. Students transferring between districts are counted in each district (duplicate count). Waived students are excluded.

Grade Levels of Students Served

Most ELLs served by the TBIP were enrolled in K–3. This accounted for 53 percent of the ELL enrollment in the 2010–11 school year. Beginning at grade 3, ELL student enrollment gradually declines (Figure 4-5). At grade 9, there is a slight increase, however, the numbers of ELLs continue to decline in grades 10, 11, and 12.

**Figure 4-5: Total ELL Enrollment by Grade
(School Year 2010–11)**

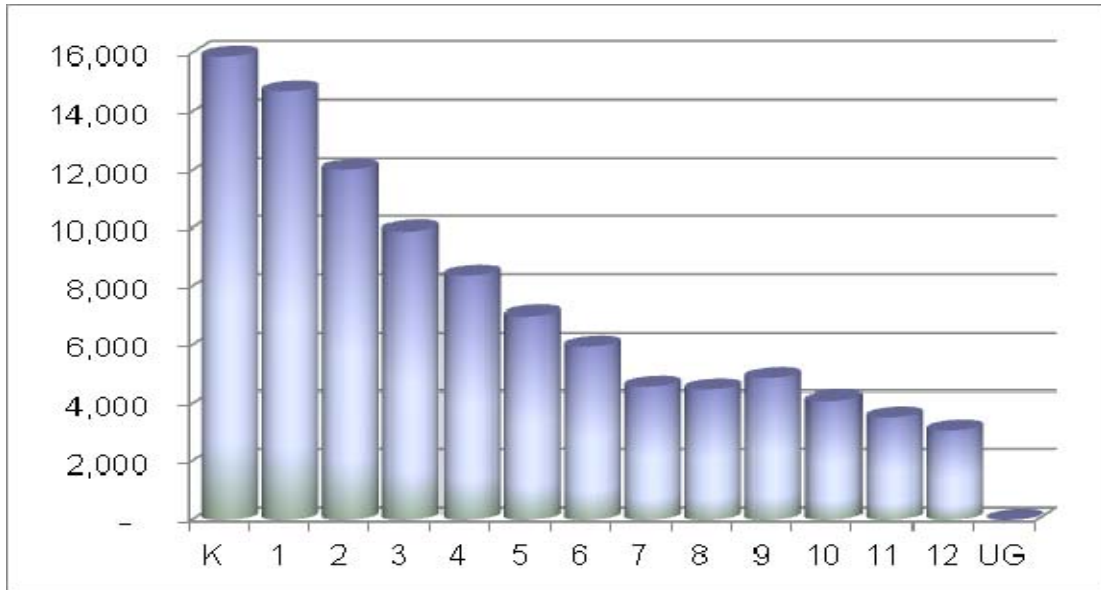


Figure 4-6 represents the number of total and new ELL students served by grade level. Student counts include student enrollments within or across multiple districts. The student count reflects the transitory nature of ELL families as new students represent nearly 24 percent of ELLs overall, or more than 7 percent throughout most of the grade levels.

**Figure 4-6: Total ELLs and New to Program Enrollment by Grade
(School Year 2010–11)**

Grade	Total ELL Students	% of ELL Students	New ELL Students	% of New	% of New by Grade
K	15,874	16%	15,560	66%	98%
1	14,722	15%	1,423	6%	10%
2	12,041	12%	920	4%	8%
3	9,919	10%	817	3%	8%
4	8,383	9%	697	3%	8%
5	7,000	7%	636	3%	9%
6	5,955	6%	518	2%	9%
7	4,552	5%	554	2%	12%
8	4,459	5%	523	2%	12%
9	4,859	5%	952	4%	20%
10	4,100	4%	484	2%	12%
11	3,532	4%	408	2%	12%
12	3,076	3%	204	1%	7%
Total	98,472	100%	23,696	100%	24%

Waived students are included.

V. Languages Spoken

Students served by the TBIP program spoke a total of 208 languages. In 2010–11, about 67 percent spoke Spanish and another 19 percent spoke Russian, Vietnamese, Somali, Ukrainian, Chinese, Korean, Tagalog, or Arabic. Sixteen districts had 50 or more languages spoken by ELLs, while many districts only served ELLs whose primary language was Spanish.

Number of Languages Among Districts

A total of 208 primary, non-English languages were represented among the students served by the TBIP in the 2010–11 school year.⁵ For the last 22 years, Spanish has accounted for 67 percent of ELLs. Of the 208 languages, 91 languages were spoken by fewer than 10 students while nine languages were spoken by 1,000 or more students.

Figure 5-1 provides information on the number of students speaking the top 25 most common languages represented in the program. Appendix A lists the number of students in the TBIP with an identified non-English primary language.

**Figure 5-1: Top 25 Languages
(School Year 2010–11)**

Language	Students	Language	Students
Spanish	65,773	Amharic	641
Russian	4,395	Japanese	567
Vietnamese	4,033	Nepali	455
Somali	2,506	Rumanian	396
Ukrainian	2,139	Tigrinya	351
*Chinese	1,922	French	349
Korean	1,552	Hindi	346
Tagalog	1,376	Lao	323
Arabic	1,188	Burmese	301
Punjabi	965	Swahili	290
Cambodian	837	Mixteco	274
Marshallese	773	Urdu	245
Samoan	685		

*Includes, Cantonese, Fukienese, Mandarin, Taiwanese, and unspecified Chinese.

⁵ Some districts could not fully identify the languages spoken by their ELL students, so there may be more than 208 languages spoken by ELL students statewide.

Other Major Languages

In the 2010–11 school year, approximately 18 percent of all Washington ELLs spoke Chinese, Korean, Russian, Somali, Tagalog, Ukrainian, or Vietnamese (Figure 5-2). Among languages with more than 100 students, the largest increase in 2010–11 was in students speaking Chuuk, and the largest decrease was the number of students speaking Mixteco and Portugese.

Figure 5-2: One-Year Change in Enrollment by Major Language Group

Language	2009-10	2010-11	% Change
Total ELLs	93,197	98,472	5%
Spanish	62,273	65,776	5%
Russian	4,266	4,395	3%
Vietnamese	3,695	4,033	8%
Somali	2,330	2,506	7%
Ukrainian	2,233	2,139	-4%
*Chinese	1,773	1,953	10%
Korean	1,678	1,552	-8%
Tagalog	1,286	1,376	7%
Arabic	995	1,188	16%
Punjabi	928	965	4%
Cambodian	823	837	2%
Marshalles	614	802	23%
Samoan	619	685	10%
Amharic	580	641	10%
Japanese	500	567	12%
Nepali	349	455	23%
Rumanian	405	396	-2%
French	391	351	-11%
Hindi	306	349	12%
Tigrinya	289	346	17%
Lao	317	323	2%

Language	2009-10	2010-11	% Change
Total ELLs	93,197	98,472	5%
Burmese	226	301	25%
Swahili	268	289	7%
Mixteco	315	274	-15%
Urdu	218	245	11%
Farsi	217	213	-2%
Thai	204	213	4%
Oromo	195	210	7%
Karen	146	209	30%
Turkish	225	208	-8%
Chuuk	123	186	34%
Hmong	180	185	3%
Ilokano	182	178	-2%
Toishanese	160	175	9%
German	151	160	6%
Bosnian	160	158	-1%
Moldavian	145	146	1%
Pilipino	138	143	4%
Telugu	118	137	14%
Tamil	87	107	19%
Portugese	115	100	-15%

Includes Cantonese, Mandarin, Taiwanese, Fukienese and unspecified Chinese. Total excludes parent waivers.

Appendix B provides district information on the number of primary languages and the number of students for each of the languages.

In the 2010–11 school year, 192 districts provided instruction to ELLs from many different language backgrounds. Fifty districts served students from 20 or more language groups. Most of these districts are located in western Washington along the Interstate 5/Interstate 405 corridor.

**Figure 5-3: Districts With 20 or More Languages
(School Year 2010–11)**

District	Students	Languages	District	Students	Languages
Seattle	6,537	108	Lake Stevens	296	34
Kent	4,827	106	Kennewick	2,208	32
Federal Way	3,395	88	Olympia	224	31
Highline	3,994	88	Richland	307	31
Edmonds	2,173	83	Central Kitsap	276	30
Bellevue	1,961	79	Bethel	304	29
Renton	2,438	76	Pasco	5,739	29
Lake Washington	1,541	75	Franklin Pierce	691	28
Everett	1,958	66	Snohomish	310	27
Mukilteo	2,544	64	Snoqualmie Valley	119	27
Evergreen (Clark)	2,387	62	Tahoma	140	27
Northshore	1,041	61	Mead	214	25
Spokane	1,493	60	Fife	400	24
Tukwila	1,219	58	Central Valley	265	23
Vancouver	2,299	58	Longview	386	23
Tacoma	2,440	55	North Kitsap	200	23
Shoreline	653	54	University Place	165	23
Auburn	1,988	53	Pullman	113	22
Issaquah	762	53	South Kitsap	107	22
Clover Park	1,418	52	Steilacoom	78	21
Puyallup	717	45	Camas	118	20
North Thurston	568	41	Monroe	474	20
Battle Ground	740	39	Mount Vernon	1,686	20
Bellingham	662	38	Tumwater	104	20
Marysville	828	36	West Valley (Spk)	114	20

In contrast, all or nearly all ELLs in other districts spoke Spanish. In 50 districts, 95 percent or more of ELLs identified Spanish as their primary language (Figure 5-4). Twenty-two districts served ELLs from one primary non-English language group. The percent of ELLs whose primary language is Spanish appears to have stabilized at about two-thirds of all ELL students.

**Figure 5-4: Districts With at Least 95 Percent Spanish Speaking ELLs
(School Year 2010–11)**

District	Spanish Speaking	Total ELL Students	Percent Spanish
Aberdeen	248	257	97%
Adna	1	1	100%
Brewster	420	420	100%
Bridgeport	357	359	99%
Cascade	181	183	99%
Cashmere	228	229	100%
College Place	195	196	100%
Columbia	103	104	99%
East valley (Yak)	282	286	99%
Eastmont	986	995	99%
Elma	100	103	97%
Entiat	50	50	100%
Enumclaw	191	198	97%
Finley	155	161	96%
Goldendale	39	40	98%
Grandview	1,265	1,267	100%
Granger	609	610	100%
Highland	296	296	100%
Kiona Benton	227	231	98%
Kittitas	57	57	100%
Lake Chelan	360	362	99%
Lake Quinault	36	37	97%
Lind	29	30	97%
Mabton	433	433	100%
Manson	216	216	100%
Montesano	21	21	100%
Mossyrock	40	42	95%
Mount Adams	146	146	100%
Naches Valley	78	78	100%
North Franklin	804	813	99%
Ocosta	45	46	98%
Okanogan	99	99	100%
Omak	89	93	96%

District	Spanish Speaking	Total ELL Students	Percent Spanish
Onalaska	24	24	100%
Orondo	116	116	100%
Oroville	102	104	98%
Palisades	15	15	100%
Pasco	5,509	5,774	95%
Pateros	38	39	97%
Paterson	34	34	100%
Pomeroy	2	2	100%
Prescott	63	63	100%
Prosser	629	634	99%
Quincy	1,021	1,023	100%
Roosevelt	16	16	100%
Royal	707	714	99%
Selah	243	244	100%
Shelton	325	339	96%
Sunnyside	2,143	2,147	100%
Tonasket	165	166	99%
Toppenish	1,279	1,309	98%
Touchet	26	26	100%
Union Gap	188	189	100%
Wahluke	1,321	1,321	100%
Walla Walla	827	848	98%
Wapato	893	905	99%
Warden	375	377	100%
Waterville	20	21	95%
Wenatchee	1,714	1,746	98%
West Valley (Yak)	7	7	100%
White Salmon	196	197	100%
Winlock	64	67	96%
Woodland	140	145	97%
Yakima	4,501	4,532	99%
Zillah	155	155	100%

VI. Length of Program Participation

The 2011–13 Operating Budget ([Second Engrossed Senate House Bill 1087 –Section 514:](#)) expands OSPI’s responsibility to report measurable changes in English language proficiency, time-in-program, and transition experience for English language learners (ELLs). Sections VI–VIII provide tables and charts with data on student status, time-in-program, English language proficiency gains, and number of students transitioned.

Detailed results by district have been included in the appendices section to support the summary data provided in section VI–VIII.

Appendix D: Time in Program Upon Exit.

Appendix E: Percent of Students Making Gains and Percent of Students Achieving Proficiency.

Appendix F: Length of Program Participation and Initial English Language Proficiency Placement level.

Status of Students Served

ELLs leave the program successfully primarily in two ways. They transition out of the program by either meeting the exit performance criteria or by graduating from high school. A parent or legal guardian may waive TBIP services for his/her child; however, federal law requires that waived students participate in the annual WLPT-II assessment, therefore, waived students remain eligible for TBIP services until they meet the exit criteria established by the state. Reasons for exiting from the TBIP are described in Figure 6-1 below.

Figure 6-1: Student Status Definitions

Definitions of Student Statuses	
Transitioned	Student scored the Transitional Level on the WLPT-II and transitioned out of TBIP services during the current school year.
Graduated	Student graduated from high school while still eligible for TBIP services.
Special Education	Student was exited from TBIP because of non-linguistic factors.
Parent Waiver	Student did not participate in TBIP upon written request of parent.
Unknown Reasons	Student left the school system and the district has no record of in-state or out-of-state transfers.

Figure 6-2 provides information about the number of ELLs exiting and the reasons for non-participation in the program during the past five years. Approximately 23 percent of the ELLs served left the TBIP during the 2010–11 school year. About 19 percent (18,912) either transitioned out of the program or graduated prior to meeting the exit criteria. Another 2.1 percent (2,069) dropped out or left for unknown reasons, and 0.5 percent (489) were determined to have special education needs rather than English language limitations.

Figure 6-2: Status of Students Served by School Year (Distinct Count)

Definitions	2006–07		2007–08		2008–09		2009–10		2010–11	
Total Exited	14,043	16.8%	15,983	18.2%	17,235	19%	14,783	15.8%	23,013	23.4%
Transitioned	9,844	11.8%	13,004	14.8%	14,143	15.7%	10,559	11.3%	18,427	18.7%
Graduated	1,325	1.6%	932	1.1%	876	1.0%	1,050	1.1%	485	0.5%
Dropped out	553	0.7%	450	0.5%	470	0.5%	336	0.4%	174	0.2%
Special Education	196	0.2%	237	0.3%	291	0.3%	285	0.3%	489	0.5%
Unknown reason	1,406	1.7%	1,244	1.4%	1,214	1.3%	1,130	1.2%	1,895	1.9%
Parent Waiver	719	0.9%	116	0.1%	241	0.3%	1,423	1.5%	1,543	1.6%
Total Continuing	69,326	83.2%	72,004	81.8%	73,030	80.9%	78,627	84.2%	75,459	77%
Total ELLs	83,369	100%	87,987	100%	90,265	100%	93,410	100%	98,472	100%

Number of transition students is based on the number present during the annual testing window. Parent waivers are students enrolled for some portion of the school year.

Research has demonstrated that achievement of “academic” English, the level needed to participate in unaided instruction in English, takes four to seven years to develop. While experts may disagree about the best method for teaching ELLs, nearly all of them agree that the process of learning academic English for students with little to no English language skills normally exceeds three years.

Figure 6-3 provides information on the amount of time students were served by the TBIP. The number of exited ELLs is a combined count of transitioned, graduated, dropped-out, special education determination, and left for unknown reasons. More than half (53 percent) of those exiting the program participated for three or more years.

Figure 6-3: Number of Distinct ELLs Served by Time in Program (School Year 2010–11)

Time in Program	Total Served	Exited ELL Students	% of Total Served
< 1 Year	14,330	1,141	8%
>=1 and < 2 Years	22,681	3,379	15%
>=2 and < 3 Years	17,775	4,106	23%
>= 3 and < 4 Years	13,448	3,446	26%
>= 4 and < 5 Years	9,436	2,142	23%
>= 5 and < 6 Years	6,702	1,403	21%
>=6	12,827	2,875	22%
Total	97,199	18,492	19%

Waived students are excluded.

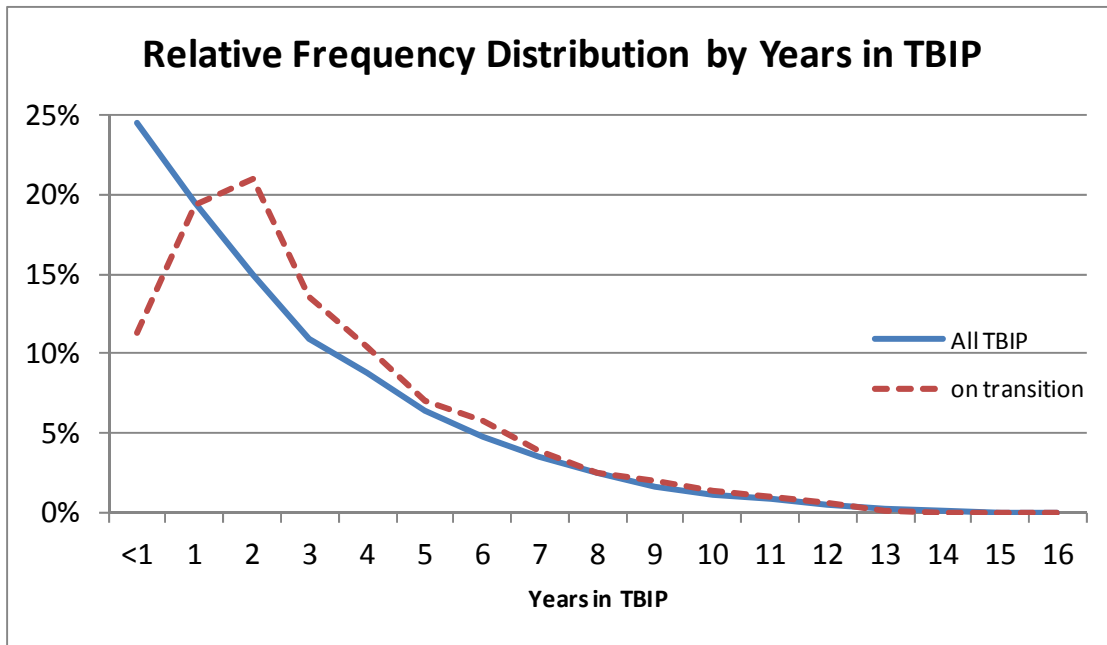
Figure 6-4 provides information on the average number of years students are served by the TBIP. Data show that for all TBIP, both the median and mean of time students are served in the TBIP decreased (median 3.72; mean 3.15) from the 2005–06 to the 2010–11 school year. The difference for transitioned students shows that the median in student time-in-program remains fairly consistent, over time.

6.4: Average Number of Years in TBIP

	All TBIP		On Transition	
	median	mean	median	mean
2005–06	6.48	6.48	3.02	3.74
2006–07	5.76	6.08	2.79	3.62
2007–08	4.77	5.36	2.83	3.83
2008–09	3.77	4.58	2.81	3.36
2009–10	2.83	3.95	2.72	3.13
2010–11	2.76	3.33	2.82	3.86

Time in program includes all TBIP students enrolled at any point during a school year, most of whom have recently entered the program. A better measure of how long students participate in TBIP is the time among those who have transitioned out of the program. As shown in Figure 6.5, both distributions are highly skewed, making the median a more preferred measure of the typical student than the mean because means are sensitive to a few extreme values. Appendix D lists the average time in TBIP by school district.

6.5: Average Number of Years in TBIP



VII. English Language Proficiency and Transition Experience

All ELLs in Grades K–12 are required to take the annual WLPT which measures a student’s English language proficiency in reading, writing, listening, and speaking and categorizes four levels of English language proficiency: Level 1 - Beginning, Level 2 - Intermediate, Level 3 - Advanced, and Level 4 - Transitional. Level 1- Beginning indicates minimal or no English language proficiency, while Level 4 - Transitional is used as the TBIP exit criteria established by the state.

In the 2010–11 school year, there were 91,481 students present during the February/March test window of the WLPT-II, of which 89,943 students (98.3 percent) completed all four parts of the test and received an overall composite score.

Figure 7-1 demonstrates that 18,427 students met the Transitional Performance Level and exited TBIP. Included in this count are students who exited the program as a result of their parents waiving TBIP services. Exit results represent an increase of 7,349 students (40 percent) transitioning compared to the 2009–10 school year.

**Figure 7-1: WLPT-II Results by Grade and Proficiency Level
(School Year 2010–11)**

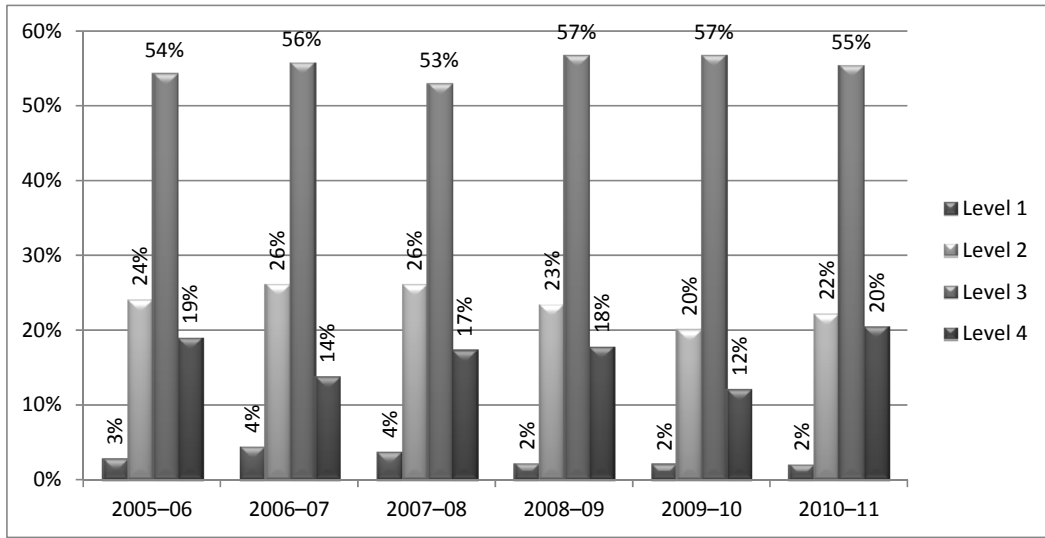
Grade	Not Scored*	Level 1	Level 2	Level 3	Level 4	Total
		Beginning	Intermediate	Advanced	Transitional	Tested
K	350	865	8,096	4,764	959	15,034
1	125	224	4,127	7,017	2,541	14,034
2	86	163	1,850	5,910	3,443	11,452
3	85	94	975	5,902	2,341	9,397
4	64	100	994	5,008	1,770	7,936
5	42	94	796	4,351	1,306	6,589
6	66	41	423	3,609	1,429	5,568
7	82	60	438	2,809	792	4,181
8	76	57	519	2,684	755	4,091
9	157	74	623	2,362	810	4,026
10	130	40	474	2,017	895	3,556
11	125	20	339	1,796	818	3,098
12	150	11	255	1,535	568	2,519
Total	1,538	1,843	19,909	49,764	18,427	91,481

*Students who were unable to complete or respond to the test were reported as Not Scored.

Note: Included in this count are students whose parents waive TBIP services.

Figure 7-2 displays the trend in English language proficiency levels of ELLs since the 2005–06 school year. In 2010-11, more than half of ELL students scored at Level 3. The number of students transitioning out of the TBIP (Level 4) varies from year-to-year, with the 2010–11 school year showing an 8 percent increase from the previous year.

Figure 7-2: WLPT-II English Proficiency Levels by School Year



As shown in Figure 7-3, 20.5 percent of the 89,943 TBIP students with a completed annual test from 2010–11 met the transition Level 4 in English proficiency. This constitutes a new high proportion of students transitioning out of TBIP over the previous four school years.

Figure 7-3: WLPT-II Results by Grade and Proficiency Level (School Year 2010–11)

Percentage of Students Achieving English Proficiency					
Grade	2006–07	2007–08	2008–09	2009–10	2010–11
Kinder	7%	5%	6%	9%	7%
1st	16%	15%	17%	19%	18%
2nd	22%	26%	31%	22%	30%
3rd	12%	20%	20%	11%	25%
4th	12%	20%	24%	7%	22%
5th	8%	16%	23%	4%	20%
6th	19%	24%	18%	20%	26%
7th	21%	16%	15%	20%	19%
8th	24%	16%	16%	18%	19%
9th	7%	18%	10%	4%	21%
10th	10%	25%	13%	8%	26%
11th	10%	24%	15%	8%	28%
12th	8%	20%	10%	8%	24%
Total	14%	17%	18%	13%	20%

As shown in figure 7-4, of the 65,362 TBIP students during the 2010–11 school year with a matching annual test from the 2009–10 school year, 78.5 percent made progress in English

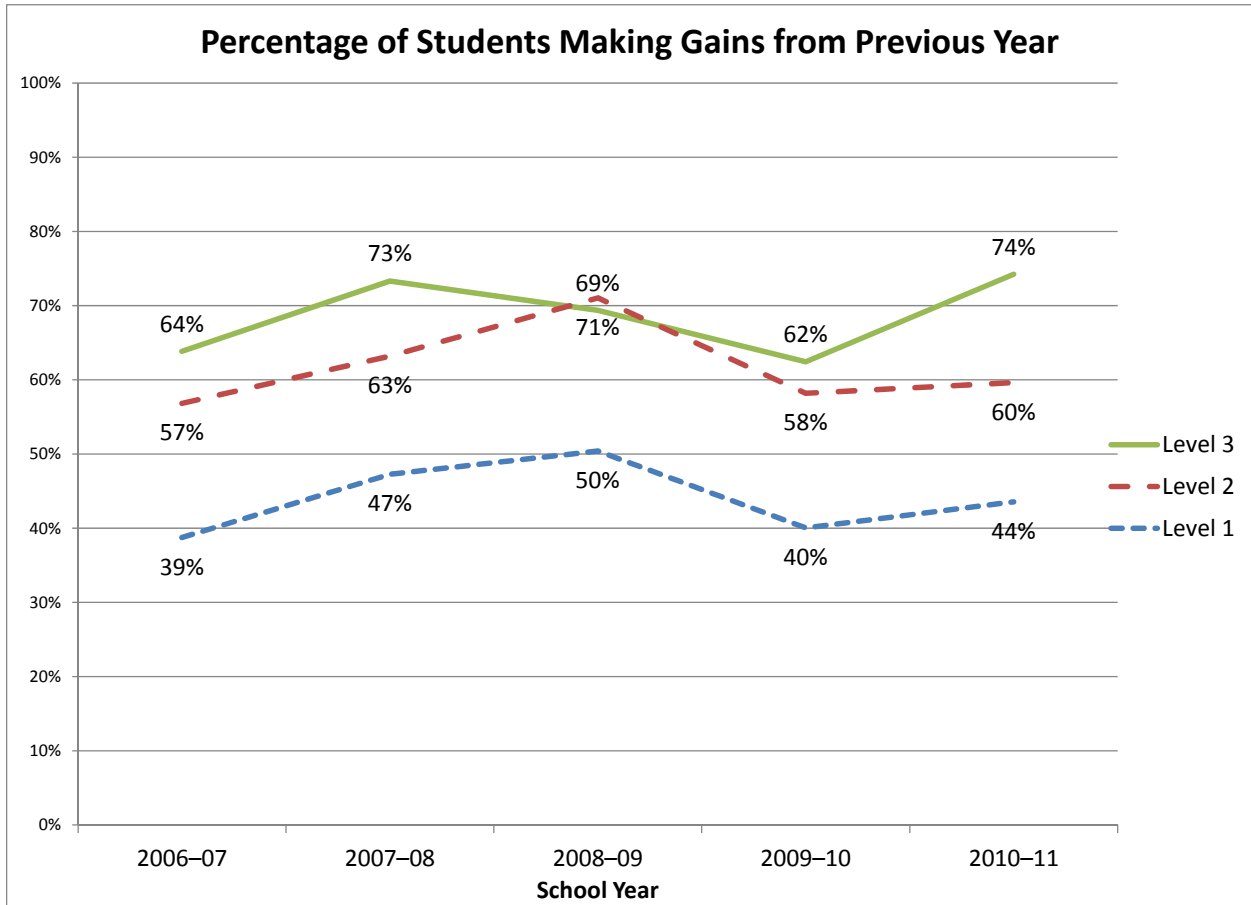
proficiency. Conversely, more than one-fifth of TBIP students failed to make progress in learning English. The 2010–11 school year also represents a new high for proportion of students showing progress over the previous four school years.

Figure 7-4: Percentage of Students Making Progress in English Proficiency by Grade and School Year

Percentage of Students Making Gains in English Proficiency					
Grade	2006-07	2007-08	2008-09	2009-10	2010-11
1st	80%	74%	86%	85%	74%
2nd	80%	75%	87%	83%	76%
3rd	61%	71%	79%	59%	74%
4th	48%	73%	71%	40%	78%
5th	46%	73%	71%	36%	78%
6th	78%	91%	75%	80%	94%
7th	80%	70%	57%	74%	68%
8th	83%	71%	64%	76%	69%
9th	62%	80%	66%	55%	79%
10th	59%	94%	68%	56%	94%
11th	55%	92%	64%	52%	93%
12th	42%	86%	51%	41%	87%
Total	68%	77%	76%	67%	78%

As shown in Figure 7-5, students currently performing at an English Level 3 showed the greatest proportion of gains among all the language proficiency levels (except Level 4 since all students attaining proficiency had made progress from the previous year in order to achieve that proficiency). Students at an English Level 1 show the least gains across all five years reported. Students with an English Level 2 reached the highest proportion of gains (71%) between the 2007–08 and 2008–09 school years.

Figure 7-5: Trend in the Percentage of Students Making Progress in English Proficiency by Language Level



OSPI’s Web site provides Annual Measureable Achievement Objectives (AMAO) on Washington’s ELL students’ English language levels (WLPT-II) and the percentage of those making gains (AMAO-1) and achieving English proficiency (AMAO-2) under Title III federal targets at the state, district, and school levels when there are at least 30 students in the tested grade and subject (see <http://reportcard.ospi.k12.wa.us>).

VIII. Language Proficiency and Academic Performance

ELLs participate in both the Washington English Language Proficiency Assessment that is aligned to the state reading, writing, and communication standards and also in the statewide academic assessments. Immigrant ELLs who are enrolled in a U.S. school for the first year are exempt from taking the reading academic assessment.

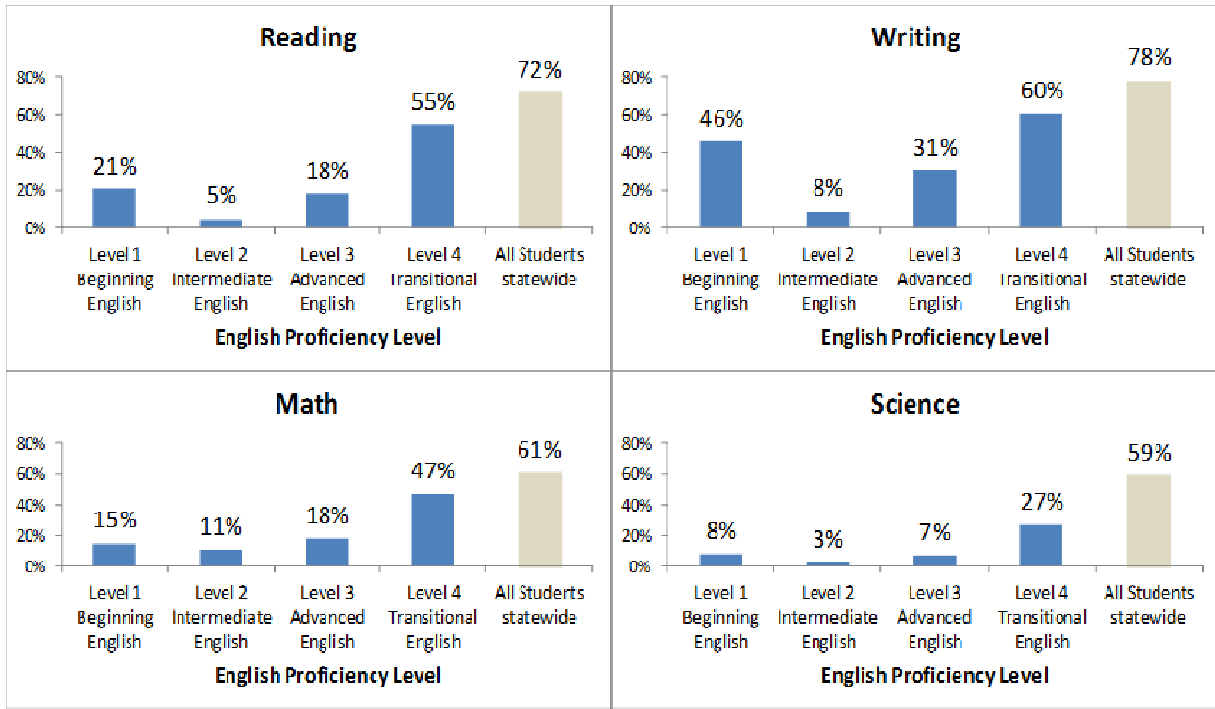
Statewide Academic Assessment Results

Washington's statewide academic assessments, the Measurements of Student Progress (MSP), High School Proficiency Exam (HSPE) and the End-of-Course (EOC) math exams measure levels of a student's academic performance against specific statewide performance standards. ELLs taking the statewide assessments who do not have the English language skills needed to understand the reading texts or test questions, or to respond effectively in English are at a disadvantage on these assessments.

There remains a significant achievement gap between ELL students and all Washington's students in terms of the performance on the standardized math, science, reading, and writing assessments. The 2010–11 assessment results for ELLs who tested on both the WLPT-II and the MSP/HSPE in the required grades, show that 55 percent of ELLs who transitioned from the TBIP program met the MSP/HSP reading standard, 47 percent met the math standard, 60 percent met the writing standard, and 27 percent met the science standard. Even students scoring at English Level 4 score well behind all students statewide, with the percentage meeting academic standards 17 percent lower in reading, 14 percent lower in math, 18 percent lower in writing, and 32 percent lower in science.

Figures 8-1 to 8-5 show how ELLs in grades 3–8 and 10 who met the transitional level on the WLPT-II performed on the MSP/HSPE/EOC in the required grades. Generally, transitional ELL students in grades 3–5 and grade 10 performed below the state total, but students in grades 6–8 performed far below the state totals.

Figure 8-1: Percentage Meeting MSP/HSPE standards by WLPT-II English Proficiency Levels



Includes all grades tested

As shown in Figures 8-1, there is a strong relationship between English language proficiency and academic performance. While ELL students scoring at Level 1 out-perform Level 2 students on these academic assessments, the total number of Level 1 students taking the statewide assessments is quite small (246 reading; 46 writing, 452 math and 153 science).

Figure 8-2: WLPT-II Transitional Level and MSP/HSPE Reading Performance (School Year 2010–11)

Grade in Spring 2011	MSP/HSPE Reading Level				Total Transitional who Scored on MSP/HSPE	Percent of Transitional who Met Reading MSP/HSPE	Percent of All Students who Met Reading MSP/HSPE
	Level 1	Level 2	Level 3	Level 4			
Grade 3	49	579	1,188	489	2,305	73%	74%
Grade 4	50	720	822	145	1,737	56%	68%
Grade 5	41	525	521	193	1,280	57%	68%
Grade 6	70	680	589	64	1,403	48%	71%
Grade 7	149	450	132	46	777	24%	57%
Grade 8	107	337	193	93	730	40%	70%
Grade 10	67	282	347	126	822	58%	86%
Total	533	3,573	3,792	1,156	9,054	55%	71%

Figure 8-3: WLPT-II Transitional Level and MSP/HSPE Writing Performance (School Year 2010–11)

Grade in Spring 2011	MSP/HSPE Writing Level				Total Transitional who Scored on MSP/HSPE	Percent of Transitional who Met Writing MSP/HSPE	Percent of All Students who Met Writing MSP/HSPE
	Level 1	Level 2	Level 3	Level 4			
Grade 4	167	631	709	211	1,718	54%	63%
Grade 7	101	254	349	71	775	55%	73%
Grade 10	17	173	432	134	756	76%	91%
Total	285	1,058	1,490	416	3,249	60%	75%

Figure 8-4: WLPT-II Transitional Level and MSP/EOC Math Performance (School Year 2010–11)

Grade in Spring 2011	MSP/EOC Math Level				Total Transitional who Scored on MSP/EOC	Percent of Transitional who Met Math MSP/EOC	Percent of All Students who Met Math MSP/EOC
	Level 1	Level 2	Level 3	Level 4			
Grade 3	277	673	1,065	298	2,313	59%	62%
Grade 4	522	352	592	279	1,745	50%	60%
Grade 5	241	384	509	151	1,285	52%	62%
Grade 6	420	423	433	134	1,410	40%	60%
Grade 7	313	224	169	75	781	31%	58%
Grade 8	300	221	140	78	739	28%	51%
Grade 10	193	193	174	157	717	46%	69%
Total	2,601	2,815	3,472	1,346	10,234	44%	60%

Figure 8-5: WLPT-II Transitional Level and MSP/HSPE Science Performance (School Year 2010–11)

Grade in Spring 2011	MSP/HSPE Science Level				Total Transitional who Scored on MSP/HSPE	Percent of Transitional who Met Science MSP/HSPE	Percent of All Students who Met Science MSP/HSPE
	Level 1	Level 2	Level 3	Level 4			
Grade 5	363	497	335	90	1,285	33%	56%
Grade 8	196	330	188	24	738	30%	63%
Grade 10	424	181	101	10	716	14%	55%
Total	990	1,008	626	124	2,748	27%	58%

OSPI’s web site provides more information on MSP/HSPE/EOC results at the state, district, and school levels when there are at least 30 students in the tested grade and subject (see <http://reportcard.ospi.k12.wa.us>).

VIII. Bibliography

Antunez, Beth, “The Preparation and Professional Development of Teachers of English Language Learners,” ERIC Clearinghouse on Teaching and Teacher Education, September 2002. <<http://www.eric.ed.gov/PDFS/ED477724.pdf>> (December 29, 2010).

Christian, Donna, *Two-Way Bilingual Education: Students Learning through Two Languages*. National Center for Research on Cultural Diversity and Second Language Learning, Santa Cruz, CA and Washington, DC, 1994.

Costantino, Magda, “Reading and Second Language Learners—Research Report,” Office of Superintendent of Public Instruction, Olympia, WA, April 1999. <<http://www.eric.ed.gov/PDFS/ED452706.pdf>> (December 29, 2010).

Deussen, T., Autio, E., Miller, B., Turnbaugh Lockwood, A., Stewart, V., *What Teachers Should Know About Instruction for English Language Learners: A Report to Washington State*. Evaluation Program, Northwest Regional Education Laboratory, Portland OR, 2008. <<http://www.k12.wa.us/MigrantBilingual/pubdocs/NWREL-Report-ELLInstruction-Nov2008.pdf>> (December 29, 2010).

Malagon, Helen and Bylsma, Pete, “Educating Limited-English-Proficient Students in Washington State,” Office of Superintendent of Public Instruction, Olympia, WA, December 2000. <<http://www.capaa.wa.gov/about/study2K.pdf>> (December 29, 2010).

Malagon, Helen and Chacon, Alma, “Washington State Transitional Bilingual Instruction Program Guidelines.” Office of Superintendent of Public Instruction, Olympia, WA, December 2009. <<http://www.k12.wa.us/MigrantBilingual/pubdocs/TBIPProgramGuidelines.pdf>> (December 29, 2010).

Ramírez, J. David, “Executive Summary: Longitudinal Study of Structured English Immersion Strategy, Early-Exit and Late-Exit Transitional Bilingual Education Programs for Language-Minority Children.” *Bilingual Research Journal*. Vol. 16, No. 1–2, 1992, pp. 1–62.

Thomas, Wayne P. and Collier, Virginia P., *A National Study of School Effectiveness for Language Minority Student’s Long-Term Academic Achievement Final Report: Project 1.1*, Center for Research on Education, Diversity and Excellence, University of California-Santa Cruz, 2002. <http://crede.berkeley.edu/research/llaa/1.1_final.html> (December 29, 2010).

Thomas, Wayne P. and Collier, Virginia P., *School Effectiveness for Language Minority Students*, National Clearinghouse for Bilingual Education, The George Washington University, Washington DC, December 1997. <http://www.thomasandcollier.com/Downloads/1997_Thomas-Collier97.pdf> (December 29, 2010).

Appendix A

Table A-1: Languages Spoken by Language

Language	Students	Language	Students	Language	Students	Language	Students
Acholi	3	Ewe	8	Korean	1,552	Sahaptian	4
Afrikaans	11	Fallani	5	Kosraean	64	Salish	8
Aguacateco	17	Fanti	3	Kpelle	2	Samoan	685
Akan	9	Farsi	213	Krahn	1	Sanskrit	1
Albanian	48	Fijian	16	Krio	17	Serbo-Croatian	58
Amharic	641	Finnish	14	Kru	2	Shona	1
Arabic	1,188	Flemish	3	Kurdish	48	Sindhi	5
Armenian	34	Fra Fra	2	Lao	323	Sinhalese	11
Azerbaijani	3	French	349	Latvian	3	Sirayki	1
Balinese	2	Fula	6	Liberian	20	Slovak	9
Bambara	1	Fulfulde	1	Lingala	17	Slovenian	3
Bangala	7	Ga	9	Lithuanian	16	Sogdian	1
Bantu	29	Ge-Kayapo	1	Luganda	10	Somali	2,506
Bassa	5	Georgian	8	Luo	5	Soninke	33
Bemba	4	German	160	Makua	9	Sotho	4
Bengali	39	Greek, Modern	35	Malay	20	Spanish	65,773
Berber	3	Guarani	1	Malayalam	46	Stoney	4
Bikol	3	Gujarati	40	Mam	16	Sudanese-Arat	6
Bisaya	5	Haitian Creole	37	Mandingo	83	Susu	2
Bosnian	158	Hausa	7	Mandinka	11	Swahili	290
Bulgarian	62	Hawaiian	10	Marathi	39	Swedish	25
Burmese	301	Hebrew, Modern	76	Marquesan	7	Tagalog	1,376
Byelorussian	5	Herero	2	Marshallese	773	Taishan	1
Cakchiquel	3	Hiligaynon	1	Maya-Quiche	1	Tajiki	1
Cambodian	837	Hindi	346	Mien	65	Tamil	107
Carolinina	60	Hmong	186	Mixteco	274	Tarasco	26
Cebuano	20	Hoh	2	Moldavian	143	Telugu	137
Chagatai	3	Hungarian	22	Mongolian	57	Temne	1
Chalchiteco	3	Ibanag	1	Mordvin	1	Teso	1
Cham	21	Ibo	7	Navajo	7	Thai	209
Chamorro	39	Icelandic (Old)	6	Nepali	455	Tibetan	21
Chao	4	Igbo	8	Nez Perce	2	Tigrinya	351
Chewa	2	Ilokano	185	Nigerian	2	Tocharian	1
Chin	81	Indonesian	83	Norwegian	22	Toishanese	175
Chinese-Cantonese	802	Inuktitut	2	Nuer	27	Tongan	79
Chinese-Fukienese	5	Italian	53	Oriay	1	Trukese	17
Chinese-Mandarin	575	Jamaican	2	Oromo	210	Turkic	6
Chinese-Taiwanese	26	Japanese	567	Palau	23	Turkish	208
Chinese-Unspecified	545	Javanese	3	Pashto	32	Twi	38
Chungki	15	Kanjobal	36	Persian	26	Ukrainian	2,139
Chuuk	178	Kannada	24	Pilipino	146	Unknown	290
Cornish	3	Karen	213	Pohnpeian	22	Urdu	245
Creole	46	Kashmiri	1	Polish	48	Uzbek	7
Croatian	2	Khalkha	4	Portugese	100	Vietnamese	4,033
Czech	14	Khmer	71	Pulau-Guai	6	Visayan	30
Danish	23	Kikuya	25	Punjabi	965	Wolof	55
Dari	16	Kinyarwanda	10	Pushtu	8	Xhosa	2
Dinka	13	Kirgiz	2	Quechua	2	Yakima	29
Dire	1	Kirundi	24	Romansch	5	Yap	8
Dutch	26	Kishinau	3	Rumanian	396	Yoruba	12
Egyptian-Arabic	3	Kmhmu	4	Russian	4,395	Zezeru	1
Ethiopic	58	Kongo	1	Rwanda	6		

Table A-2: Languages Spoken by Frequency

Language	Students	Language	Students	Language	Students	Language	Students
Spanish	65,773	Bulgarian	62	Fijian	16	Javanese	3
Russian	4,395	Carolinina	60	Chungki	15	Kishinau	3
Vietnamese	4,033	Ethiopic	58	Czech	14	Latvian	3
Somali	2,506	Serbo-Croatian	58	Finnish	14	Azerbaijani	3
Ukrainian	2,139	Mongolian	57	Dinka	13	Cornish	3
Korean	1,552	Wolof	55	Yoruba	12	Acholi	3
Tagalog	1,376	Italian	53	Afrikaans	11	Berber	3
Arabic	1,188	Polish	48	Mandinka	11	Cakchiquel	3
Punjabi	965	Kurdish	48	Sinhalese	11	Flemish	3
Cambodian	837	Albanian	48	Hawaiian	10	Slovenian	3
Chinese-Cantonese	802	Creole	46	Luganda	10	Chalchiteco	3
Marshallese	773	Malayalam	46	Kinyarwanda	10	Egyptian-Arabic	3
Samoaan	685	Gujarati	40	Ga	9	Fanti	3
Amharic	641	Marathi	39	Makua	9	Balinese	2
Chinese-Mandarin	575	Chamorro	39	Slovak	9	Herero	2
Japanese	567	Bengali	39	Akan	9	Kirgiz	2
Chinese-Unspecified	545	Twi	38	Igbo	8	Kpelle	2
Nepali	455	Haitian Creole	37	Pushtu	8	Nez Perce	2
Rumanian	396	Kanjobal	36	Yap	8	Nigerian	2
Tigrinya	351	Greek, Modern	35	Salish	8	Susu	2
French	349	Armenian	34	Ewe	8	Chewa	2
Hindi	346	Soninke	33	Georgian	8	Croatian	2
Lao	323	Pashto	32	Navajo	7	Hoh	2
Burmese	301	Visayan	30	Hausa	7	Jamaican	2
Swahili	290	Bantu	29	Marquesan	7	Quechua	2
Unknown	290	Yakima	29	Uzbek	7	Fra Fra	2
Mixteco	274	Nuer	27	Bangala	7	Inuktitut	2
Urdu	245	Dutch	26	Ibo	7	Kru	2
Farsi	213	Persian	26	Fula	6	Xhosa	2
Karen	213	Chinese-Taiwanese	26	Pulau-Guai	6	Guarani	1
Oromo	210	Tarasco	26	Turkic	6	Kashmiri	1
Thai	209	Kikuya	25	Rwanda	6	Krahn	1
Turkish	208	Swedish	25	Sudanese-Arabic	6	Maya-Quiche	1
Hmong	186	Kannada	24	Icelandic (Old)	6	Mordvin	1
Ilokano	185	Kirundi	24	Chinese-Fukienese	5	Shona	1
Chuuk	178	Palau	23	Bassa	5	Sogdian	1
Toishanese	175	Danish	23	Fallani	5	Taishan	1
German	160	Hungarian	22	Luo	5	Ibanag	1
Bosnian	158	Norwegian	22	Sindhi	5	Sanskrit	1
Pilipino	146	Pohnpeian	22	Bisaya	5	Sirayki	1
Moldavian	143	Tibetan	21	Byelorussian	5	Teso	1
Telugu	137	Cham	21	Romansch	5	Bambara	1
Tamil	107	Malay	20	Sotho	4	Fulfulde	1
Portugese	100	Cebuano	20	American Sign	4	Kongo	1
Indonesian	83	Liberian	20	Chao	4	Oriay	1
Mandingo	83	Aguacateco	17	Sahaptian	4	Temne	1
Chin	81	Krio	17	Stoney	4	Zezeru	1
Tongan	79	Lingala	17	Bemba	4	Dire	1
Hebrew, Modern	76	Trukese	17	Khalkha	4	Ge-Kayapo	1
Khmer	71	Mam	16	Kmhmu	4	Hiligaynon	1
Mien	65	Dari	16	Bikol	3	Tajiki	1
Kosraean	64	Lithuanian	16	Chagatai	3	Tocharian	1

Appendix B

Languages Spoken by District

District	Language	Student	District	Language	Student	District	Language	Student
Aberdeen(7)		257	Auburn(53) (continued)		1,998	Battle Ground(39) (continued)		748
	Arabic	1		Korean	37		Cambodian	4
	Cambodian	4		Kpelle	1		Cebuano	2
	Carolinina	1		Krahn	1		Chagatai	2
	Korean	1		Kurdish	6		Chao	1
	Sindhi	1		Lao	12		Chin	1
	Slovak	1		Liberian	1		Chinese-Mandarin	1
	Spanish	248		Lithuanian	2		Chinese-Unspecified	4
Adna(1)		1		Malay	2		Chuuk	1
	Spanish	1		Malayalam	3		Ewe	2
Anacortes(9)		62		Marshallese	150		Finnish	3
	Chinese-Cantonese	2		Palau	1		French	2
	Hindi	1		Polish	1		German	1
	Japanese	3		Punjabi	37		Greek, Modern	2
	Punjabi	1		Rumanian	2		Hindi	5
	Tagalog	2		Russian	99		Hmong	6
	Thai	1		Samoan	32		Japanese	5
	Unknown	1		Sanskrit	1		Korean	1
	Vietnamese	1		Somali	84		Kosraean	1
	Spanish	50		Spanish	1,161		Lao	5
Arlington(12)		192		Swahili	9		Liberian	1
	Amharic	2		Tagalog	27		Lithuanian	2
	Arabic	1		Tamil	1		Moldavian	1
	Chinese-Cantonese	2		Thai	6		Norwegian	2
	Flemish	3		Tigrinya	2		Oromo	1
	Lao	1		Tongan	2		Pilipino	1
	Marshallese	1		Turkish	9		Portugese	2
	Russian	6		Ukrainian	177		Rumanian	23
	Spanish	158		Unknown	8		Russian	349
	Tagalog	1		Urdu	1		Spanish	157
	Ukrainian	14		Uzbek	2		Swedish	1
	Vietnamese	2		Vietnamese	49		Tagalog	9
	Zezeru	1		Visayan	1		Thai	4
Auburn(53)		1,998	Bainbridge(14)		35		Ukrainian	113
	Amharic	1		Arabic	3		Vietnamese	24
	Arabic	16		Chinese-Cantonese	1	Bellevue(79)		1,966
	Bulgarian	1		Chinese-Mandarin	1		Albanian	2
	Cambodian	14		Chinese-Unspecified	1		Amharic	7
	Cebuano	1		French	3		Arabic	69
	Chinese-Cantonese	2		German	1		Armenian	8
	Chinese-Mandarin	5		Hebrew, Modern	2		Bengali	4
	Chinese-Unspecified	4		Japanese	2		Bikol	1
	Cornish	1		Korean	2		Bosnian	7
	Dinka	1		Spanish	12		Bulgarian	5
	Egyptian-Arabic	1		Tagalog	1		Burmese	14
	Farsi	2	Bainbridge(14) (continued)		35		Cambodian	9
	French	1		Thai	2		Cham	2
	Gujarati	1		Ukrainian	3		Chewa	1
	Hindi	5		Vietnamese	1		Chinese-Cantonese	83
	Hmong	1	Battle Ground(39)		748		Chinese-Mandarin	144
	Igbo	2		Amharic	2		Chinese-Taiwanese	17
	Ilokano	2		Arabic	2		Chinese-Unspecified	10
	Japanese	2		Armenian	1		Chuuk	1
	Kirgiz	1		Bosnian	2		Czech	2
	Kirundi	7		Bulgarian	2		Danish	2

District	Language	Student	District	Language	Student	District	Language	Student
Bellevue(79) (continued)		1,966	Bellingham(38)		663	Bethel(29) (continued)		358
	Dari	3		Afrikaans	1		Spanish	212
	Dutch	4		Agucateco	1		Tagalog	9
	Egyptian-Arabic	1		Amharic	4		Thai	4
	Ethiopic	2		Arabic	7		Ukrainian	16
	Farsi	49		Armenian	1		Unknown	2
	French	19		Burmese	1		Vietnamese	9
	Georgian	2		Cambodian	2		Wolof	1
	German	16		Chinese-Cantonese	5		Yap	1
	Guarani	1		Chinese-Mandarin	6	Blaine(15)		102
	Gujarati	1		Chinese-Unspecified	7		Cambodian	2
	Hebrew, Modern	8		Dari	2		Finnish	1
	Hiligaynon	1		Farsi	4		Gujarati	1
	Hindi	44		German	4		Hindi	7
	Hmong	4		Greek, Modern	1		Korean	2
	Hungarian	5		Gujarati	1		Marshallese	1
	Indonesian	1		Haitian Creole	3		Pilipino	3
	Italian	2		Hindi	7		Punjabi	5
	Japanese	109		Hungarian	1		Russian	31
	Kannada	4		Japanese	4		Salish	1
	Khmer	4		Korean	8		Spanish	40
	Korean	190		Krio	1		Tagalog	1
	Lao	5		Marshallese	1		Ukrainian	4
	Lithuanian	2		Mixteco	2		Urdu	2
	Malay	1		Mongolian	1		Vietnamese	1
	Malayalam	14		Navajo	1	Bremerton(19)		147
	Mandingo	2		Pilipino	1		Arabic	1
	Mandinka	2		Punjabi	71		Chamorro	1
	Marathi	18		Russian	37		Chinese-Cantonese	1
	Mongolian	7		Samoan	1		Chinese-Mandarin	2
	Nepali	1		Sotho	4		Chinese-Unspecified	1
	Norwegian	1		Spanish	382		Chuuk	8
	Oriay	1		Swahili	1		Hindi	2
	Oromo	6		Tagalog	4		Ilokano	1
	Persian	7		Tamil	1		Inuktitut	1
	Pilipino	13		Thai	2		Japanese	4
	Polish	4		Ukrainian	18		Kanjobal	1
	Portugese	8		Urdu	3		Kurdish	1
	Punjabi	11		Vietnamese	62		Mam	1
	Rumanian	12	Bethel(29)		358		Samoan	1
	Russian	90		Arabic	6		Spanish	81
	Serbo-Croatian	25		Cambodian	6		Swedish	1
	Sinhalese	2		Chinese-Mandarin	1		Tagalog	32
	Slovak	1		Chinese-Unspecified	2		Unknown	2
	Somali	12		Chuuk	1		Vietnamese	5
	Spanish	630		German	4	Brewster(1)		420
	Swahili	10		Hausa	1		Spanish	420
	Swedish	2		Icelandic (Old)	1	Bridgeport(13)		359
	Tagalog	4		Indonesian	1		Spanish	357
	Tamil	28		Italian	2		Tagalog	1
	Telugu	60		Japanese	1		Unknown	1
	Thai	12		Korean	11	Burlington(13)		738
	Tibetan	1		Krio	4		Chinese-Unspecified	1
	Tigrinya	3		Lao	2		Hindi	1
	Toishanese	1		Moldavian	5		Korean	1
	Turkish	1		Pohnpeian	2		Marshallese	1
	Ukrainian	5		Punjabi	4		Mixteco	39
	Unknown	9		Rumanian	1		Punjabi	4
	Urdu	17		Russian	31		Rumanian	1
	Uzbek	2		Samoan	17		Russian	3
	Vietnamese	78		Somali	1		Spanish	683

District	Language	Student	District	Language	Student	District	Language	Student
Burlington(13) (continued)		738	Central Kitsap(30) (continued)		281	Cheney(12)		86
	Stoney	1		Punjabi	4		Arabic	1
	Tagalog	1		Romansch	1		Chinese-Mandarin	1
	Unknown	1		Samoan	7		Chinese-Unspecified	1
	Vietnamese	1		Spanish	87		French	2
Camas(20)		119		Swahili	1		Korean	5
	Amharic	1		Swedish	2		Pilipino	1
	Arabic	1		Tagalog	100		Punjabi	3
	Cambodian	1		Thai	3		Russian	28
	Chinese-Mandarin	1		Twi	1		Spanish	38
	Chinese-Unspecified	10		Vietnamese	9		Tagalog	2
	Chuuk	3	Central Valley(23)		276		Ukrainian	3
	Italian	1		Albanian	1		Vietnamese	1
	Japanese	5		Amharic	1	Chewelah(2)		3
	Lao	2		Arabic	5		Chinese-Unspecified	2
	Lithuanian	1		Bassa	1		Spanish	1
	Persian	1		Cambodian	1	Chimacum(7)		14
	Polish	1		Chinese-Cantonese	1		German	1
	Portugese	3		Chinese-Mandarin	3		Korean	1
	Russian	54		Chinese-Unspecified	4		Norwegian	2
	Spanish	19		Creole	1		Pilipino	3
	Telugu	2		Farsi	1		Spanish	4
	Tibetan	2		Haitian Creole	1		Thai	1
	Ukrainian	3		Hmong	5		Visayan	2
	Unknown	1		Italian	1	Clarkston(6)		21
	Vietnamese	7		Korean	7		Amharic	3
Cascade(3)		183		Marshallese	10		Chinese-Unspecified	3
	Russian	1		Portugese	1		Haitian Creole	2
	Spanish	181		Punjabi	4		Russian	1
	Ukrainian	1		Rumanian	1		Spanish	11
Cashmere(2)		229		Russian	92		Vietnamese	1
	Chinese-Unspecified	1		Spanish	103	Cle Elum-Roslyn(2)		21
	Spanish	228		Telugu	2		Spanish	19
Castle Rock(5)		32		Ukrainian	15		Vietnamese	2
	Hindi	1		Vietnamese	15	Clover Park(62)		1,458
	Japanese	1	Centralia(12)		353		Amharic	2
	Russian	5		Burmese	3		Bantu	1
	Spanish	24		Chinese-Unspecified	1		Burmese	2
	Tagalog	1		Italian	1		Cambodian	11
Central Kitsap (30)		281		Khalkha	2		Carolinina	2
	Albanian	1		Marshallese	2		Cebuano	1
	Amharic	2		Nepali	1		Chamorro	8
	Arabic	2		Punjabi	1		Chinese-Mandarin	1
	Cebuano	1		Russian	7		Chinese-Unspecified	1
	Chamorro	5		Spanish	331		Chuuk	2
	Chinese-Cantonese	1		Tagalog	2		Creole	2
	Chinese-Mandarin	3		Ukrainian	1		Ewe	1
	Chinese-Unspecified	9		Visayan	1		French	3
	Chuuk	1	Chehalis(11)		110		German	17
	Farsi	1		Chinese-Cantonese	1		Hindi	2
	Finnish	2		Chinese-Unspecified	4		Hmong	1
	French	2		Ethiopic	1		Icelandic (Old)	1
	German	4		German	1		Italian	2
	Hawaiian	1		Italian	1		Japanese	7
	Ilokano	1		Mixteco	1		Kashmiri	1
	Indonesian	1		Punjabi	2		Khmer	2
	Japanese	19		Russian	3		Kikuya	7
	Korean	7		Spanish	93		Kishinau	2
	Kurdish	2		Unknown	1		Korean	53
	Lao	1		Vietnamese	2		Kosraean	5

District	Language	Student	District	Language	Student	District	Language	Student
Clover Park(62)	(continued)	1,458	Dieringer(8)	(continued)	20	Edmonds(83)		2,259
	Lao	1		Spanish	9		Farsi	12
	Liberian	1		Tongan	1		Fijian	4
	Marquesan	4	East Valley (Spokane)(15)		182		French	7
	Marshallese	6		Byelorussian	1		Fula	2
	Moldavian	6		French	1		Georgian	1
	Nepali	1		German	22		German	3
	Palau	5		Hmong	6		Gujarati	2
	Pilipino	6		Japanese	1		Hindi	22
	Pohnpeian	11		Karen	4		Hmong	5
	Polish	1		Lao	1		Ibo	1
	Portugese	2		Pilipino	2		Icelandic (Old)	2
	Punjabi	1		Punjabi	2		Indonesian	6
	Romansch	1		Russian	79		Japanese	23
	Rumanian	1		Spanish	45		Khmer	6
	Russian	16		Tagalog	1		Kikuya	5
	Salish	1		Trukese	1		Korean	104
	Samoan	62		Ukrainian	7		Kurdish	1
	Somali	1		Vietnamese	9		Lao	6
	Spanish	1,118	East Valley (Yak)(5)		286		Lithuanian	1
	Swahili	4		Punjabi	1		Luo	2
	Tagalog	49		Spanish	282		Malay	2
	Thai	1		Tagalog	1		Malayalam	6
	Trukese	1		Thai	1		Mandingo	25
	Turkish	1		Vietnamese	1		Mandinka	8
	Ukrainian	1	Eastmont(6)		994		Marshallese	18
	Vietnamese	18		Amharic	2		Mongolian	5
	Yap	1		Hindi	1		Navajo	1
College Place(2)		196		Malayalam	1		Nepali	5
	Chinese-Mandarin	1		Russian	1		Norwegian	2
	Spanish	195		Spanish	986		Oromo	1
Columbia (Walla)(2)		104		Vietnamese	3		Pashto	11
	Spanish	103	Eatonville(4)		11		Persian	1
	Ukrainian	1		Lao	1		Pilipino	7
Colville(8)		59		Spanish	8		Portugese	6
	Dutch	1		Turkish	1		Punjabi	27
	French	2		Ukrainian	1		Pushtu	2
	Haitian Creole	2	Edmonds(83)		2,259		Rumanian	9
	Rumanian	12		Afrikaans	2		Russian	83
	Russian	32		Akan	6		Rwanda	1
	Spanish	6		Albanian	5		Samoan	6
	Ukrainian	3		American Sign	3		Serbo-Croatian	2
	Unknown	1		Amharic	50		Sinhalese	1
Conway(3)		30		Arabic	85		Somali	25
	Mixteco	2		Armenian	2		Spanish	1,017
	Spanish	27		Bengali	2		Swahili	12
	Visayan	1		Bosnian	8		Tagalog	46
Coupeville(3)		36		Bulgarian	10		Tamil	2
	Creole	2		Burmese	1		Telugu	1
	Haitian Creole	3		Byelorussian	2		Thai	10
	Spanish	31		Cambodian	26		Tigrinya	59
Deer Park(2)		4		Carolinina	15		Tongan	5
	Spanish	3		Cebuano	2		Trukese	1
	Swedish	1		Chinese-Cantonese	27		Turkish	2
Dieringer(8)		20		Chinese-Mandarin	10		Twi	12
	Amharic	1		Chinese-Unspecified	12		Ukrainian	70
	Chinese-Mandarin	1		Chungki	1		Unknown	4
	Creole	1		Chuuk	11		Urdu	37
	Korean	1		Dutch	1		Vietnamese	214
	Liberian	1		Ethiopic	4		Wolof	11
	Russian	5		Fanti	1		Yoruba	1

District	Language	Student	District	Language	Student	District	Language	Student
Ellensburg(8)		236	Everett(66)		1,969	Evergreen (Clark)(62) (continued)		2,386
	Amharic	1		Javanese	1		Hebrew, Modern	3
	Arabic	2		Karen	1		Hindi	15
	Chinese-Cantonese	1		Khmer	1		Hmong	6
	Korean	7		Korean	63		Ilokano	3
	Punjabi	1		Kurdish	3		Italian	2
	Russian	2		Lao	12		Japanese	28
	Spanish	221		Malayalam	1		Kanjobal	1
	Vietnamese	1		Mandingo	2		Khmer	1
Elma(3)		103		Marshallese	80		Korean	31
	Cambodian	2		Mixteco	1		Lao	17
	Japanese	1		Nepali	33		Lingala	1
	Spanish	100		Nigerian	1		Marshallese	3
Entiat(1)		50		Oromo	2		Mien	2
	Spanish	50		Pashto	4		Moldavian	14
Enumclaw(7)		198		Persian	3		Nepali	3
	Chinese-Taiwanese	1		Pilipino	4		Oromo	4
	Japanese	1		Polish	1		Palau	1
	Korean	2		Portugese	4		Persian	2
	Punjabi	1		Punjabi	23		Pilipino	8
	Samoan	1		Rumanian	10		Polish	1
	Spanish	191		Russian	164		Portugese	3
	Ukrainian	1		Serbo-Croatian	1		Pulau-Guai	2
Ephrata(9)		217		Somali	15		Punjabi	27
	Chin	1		Spanish	895		Pushtu	1
	French	1		Swahili	12		Rumanian	80
	Hindi	1		Tagalog	35		Russian	564
	Navajo	1		Telugu	2		Samoan	13
	Punjabi	1		Thai	7		Sinhalese	1
	Russian	3		Tigrinya	1		Spanish	949
	Spanish	205		Toishanese	1		Tagalog	23
	Ukrainian	2		Trukese	2		Tamil	5
	Vietnamese	2		Turkish	1		Telugu	2
Everett(66)		1,969		Twi	1		Thai	6
	Albanian	1		Ukrainian	142		Tibetan	5
	Amharic	9		Unknown	2		Tigrinya	2
	Arabic	119		Urdu	10		Tongan	1
	Bantu	12		Vietnamese	145		Trukese	5
	Bengali	3		Visayan	4		Turkish	26
	Berber	1		Wolof	3		Ukrainian	176
	Bosnian	3	Evergreen (Clark)(62)		2,386		Urdu	3
	Burmese	8		Amharic	2		Vietnamese	172
	Cambodian	23		Arabic	14		Wolof	1
	Carolinina	1		Armenian	4	Federal Way(88)		3,395
	Chinese-Cantonese	5		Bengali	1		Acholi	1
	Chinese-Mandarin	5		Bosnian	17		Afrikaans	2
	Chinese-Unspecified	28		Bulgarian	1		Albanian	4
	Chuuk	3		Cambodian	7		Amharic	14
	Danish	1		Carolinina	20		Arabic	15
	Ethiopic	1		Chamorro	8		Azerbaijani	1
	Farsi	4		Chinese-Cantonese	13		Balinese	1
	Fijian	5		Chinese-Mandarin	42		Bantu	2
	French	9		Chungki	2		Bemba	1
	Fula	1		Chuuk	30		Bikol	1
	German	2		Creole	2		Bisaya	1
	Gujarati	1		Ethiopic	1		Bosnian	2
	Hindi	9		French	1		Burmese	11
	Hmong	6		Georgian	3		Cambodian	30
	Hungarian	1		Greek, Modern	1		Carolinina	3
	Indonesian	6		Haitian Creole	3		Chamorro	1
	Japanese	9		Hawaiian	1		Chao	1

District	Language	Student	District	Language	Student	District	Language	Student
Federal Way(88)	(continued)	3,395	Federal Way(88)	(continued)	3,395	Franklin Pierce(28)	(Continued)	703
	Chewa	1		Thai	6		Arabic	3
	Chinese-Cantonese	12		Tigrinya	4		Cambodian	48
	Chinese-Mandarin	7		Tongan	13		Carolinina	1
	Chinese-Unspecified	14		Turkish	7		Chinese-Cantonese	1
	Chungki	1		Twi	5		Chuuk	2
	Chuuk	13		Ukrainian	201		Farsi	1
	Creole	3		Urdu	9		German	6
	Dinka	1		Vietnamese	100		Hindi	1
	Farsi	4		Wolof	3		Japanese	3
	French	18		Yoruba	1		Khmer	5
	Ge-Kayapo	1	Ferndale(19)		256		Korean	26
	German	2		Agua cateco	1		Kurdish	2
	Gujarati	1		Amharic	1		Marshallese	4
	Haitian Creole	2		Arabic	2		Moldavian	7
	Hausa	4		Cambodian	2		Palau	2
	Herero	1		Chagatai	1		Pilipino	3
	Hindi	9		Chinese-Mandarin	3		Pohnpeian	1
	Hmong	2		Chinese-Taiwanese	1		Rumanian	3
	Hungarian	2		Chinese-Unspecified	1		Russian	41
	Igbo	1		Ethiopic	1		Sahaptian	1
	Ilokano	18		Farsi	5		Samoan	52
	Italian	1		Haitian Creole	2		Somali	4
	Jamaican	1		Kanjobal	1		Spanish	437
	Japanese	6		Punjabi	14		Swahili	3
	Khmer	1		Russian	42		Tagalog	4
	Kikuya	6		Spanish	145		Thai	1
	Kinyarwanda	3		Tagalog	1		Ukrainian	9
	Korean	188		Turkic	2		Vietnamese	32
	Kosraean	11		Ukrainian	26	Goldendale(2)		40
	Krio	1		Vietnamese	5		Russian	1
	Kurdish	1	Fife(24)		409		Spanish	39
	Lao	5		Acholi	1	Grandview(3)		1,267
	Liberian	1		Amharic	1		Lao	1
	Lithuanian	3		Cambodian	16		Somali	1
	Luganda	1		Chinese-Mandarin	2		Spanish	1,265
	Makua	9		Ilokano	1	Granger(2)		610
	Malay	3		Kikuya	2		Thai	1
	Malayalam	1		Kishinau	1		Spanish	609
	Marshallese	85		Korean	17	Granite Falls(6)		29
	Mien	2		Krio	1		Cebuano	2
	Moldavian	3		Lao	2		Chinese-Unspecified	1
	Mongolian	10		Mandingo	1		Hungarian	1
	Nuer	1		Marshallese	14		Spanish	23
	Oromo	2		Norwegian	1		Tagalog	1
	Palau	4		Pilipino	4		Thai	1
	Pilipino	17		Punjabi	1	Highland(1)		296
	Polish	4		Russian	19		Spanish	296
	Portugese	2		Samoan	13	Highline(88)		4,160
	Punjabi	36		Sinhalese	2		Afrikaans	1
	Rumanian	8		Spanish	243		Akan	1
	Russian	240		Swahili	7		Albanian	4
	Sahaptian	1		Tagalog	14		Amharic	77
	Samoan	90		Thai	3		Arabic	80
	Sinhalese	2		Ukrainian	33		Bangala	2
	Somali	52		Vietnamese	10		Bantu	2
	Spanish	1,946	Finley(4)		161		Bemba	1
	Sudanese-Arabic	1		Italian	3		Bengali	2
	Susu	1		Russian	2		Bosnian	18
	Swahili	34		Spanish	155		Burmese	42
	Tagalog	54		Ukrainian	1		Cakchiquel	2
	Telugu	1	Franklin Pierce(28)		703		Cambodian	88

District	Language	Student	District	Language	Student	District	Language	Student
Highline(88) (continued)		4,160	Highline(88) (continued)		4,160	Issaquah(63) (continued)		766
	Cebuano	1		Tagalog	68		Polish	7
	Cham	1		Tarasco	21		Portugese	3
	Chin	19		Thai	10		Punjabi	3
	Chinese-Cantonese	8		Tigrinya	26		Rumanian	22
	Chinese-Mandarin	2		Tongan	16		Russian	36
	Chinese-Unspecified	6		Trukese	2		Slovak	3
	Chungki	3		Turkish	10		Somali	1
	Chuuk	2		Twi	3		Spanish	240
	Creole	9		Ukrainian	5		Susu	1
	Dari	1		Unknown	8		Swedish	3
	Ethiopic	1		Urdu	5		Tagalog	6
	Ewe	3		Vietnamese	327		Tamil	16
	Fallani	3		Visayan	4		Telugu	13
	Fanti	1		Wolof	2		Thai	6
	Farsi	8		Yoruba	2		Tongan	1
	French	24	Hockinson(6)		23		Turkish	1
	Fula	1		Arabic	1		Ukrainian	4
	Fulfulde	1		Rumanian	1		Unknown	1
	Gujarati	5		Russian	2		Urdu	18
	Haitian Creole	2		Spanish	2		Vietnamese	39
	Hindi	21		Thai	3	Kelso(11)		225
	Hmong	23		Ukrainian	14		Bisaya	1
	Hungarian	1	Hoquiam(3)		52		Cambodian	4
	Ibo	1		Chinese-Unspecified	1		Chinese-Cantonese	1
	Ilokano	8		Korean	2		Chinese-Unspecified	2
	Italian	1		Spanish	49		Chuuk	1
	Japanese	3	Issaquah(63)		766		Palau	1
	Karen	11		Albanian	2		Russian	24
	Khmer	11		Amharic	5		Spanish	181
	Kikuya	1		Arabic	9		Tagalog	1
	Kirundi	1		Bengali	6		Ukrainian	4
	Korean	10		Bulgarian	2		Vietnamese	5
	Kosraean	28		Burmese	2	Kennewick(32)		2,209
	Kpelle	1		Cambodian	5		Amharic	3
	Kurdish	4		Chinese-Cantonese	15		Arabic	62
	Lao	21		Chinese-Mandarin	31		Bosnian	24
	Malay	1		Chinese-Unspecified	79		Burmese	23
	Mam	1		Danish	4		Byelorussian	1
	Mandingo	2		Dutch	2		Chinese-Mandarin	2
	Marquesan	1		Ethiopic	1		Chinese-Unspecified	8
	Marshallese	2		Farsi	5		Creole	4
	Mien	4		Finnish	2		Ethiopic	3
	Mixteco	3		French	9		Hebrew, Modern	1
	Nepali	49		German	8		Italian	4
	Oromo	14		Greek, Modern	1		Korean	4
	Palau	5		Gujarati	3		Lao	5
	Persian	3		Hebrew, Modern	3		Marshallese	3
	Pilipino	2		Hindi	14		Moldavian	3
	Polish	3		Hmong	5		Nuer	2
	Portugese	1		Hungarian	1		Persian	1
	Punjabi	84		Indonesian	1		Pilipino	3
	Russian	11		Italian	2		Punjabi	3
	Samoan	76		Japanese	30		Rumanian	2
	Serbo-Croatian	2		Kannada	3		Russian	35
	Sogdian	1		Korean	75		Serbo-Croatian	1
	Somali	287		Lao	6		Somali	49
	Soninke	5		Lithuanian	1		Spanish	1,907
	Spanish	2,517		Malayalam	4		Tagalog	9
	Swahili	9		Marathi	5		Tamil	1
	Swedish	1		Pilipino	1		Teso	1

District	Language	Student	District	Language	Student	District	Language	Student
Kennewick(32) (continued)		2,209	Kent(106) (continued)		4,880	La Conner(4)		15
	Thai	3		Korean	26		Ethiopic	2
	Turkish	1		Kosraean	13		Mixteco	1
	Ukrainian	19		Kpelle	1		Spanish	11
	Vietnamese	21		Krio	2	Lacenter(7)		23
	Yoruba	1		Kurdish	22		Bassa	1
Kent(106)		4,880		Lao	40		Chinese-Unspecified	1
	Acholi	1		Liberian	8		Czech	1
	Albanian	3		Lingala	6		Mixteco	1
	Amharic	29		Lithuanian	1		Punjabi	1
	Arabic	155		Luganda	2		Russian	2
	Armenian	1		Luo	2		Spanish	16
	Balinese	1		Malay	2	Lake Chelan(3)		362
	Bangala	1		Malayalam	2		Mam	1
	Bantu	3		Mandingo	4		Russian	1
	Bassa	1		Marshallese	9		Spanish	360
	Bemba	1		Mien	13	Lake Quinault(2)		37
	Bengali	5		Mixteco	1		Chinese-Cantonese	1
	Bisaya	1		Moldavian	7		Spanish	36
	Bosnian	4		Nepali	111	Lake Stevens(34)		298
	Bulgarian	5		Nuer	6		Albanian	1
	Burmese	90		Oromo	4		Amharic	5
	Cambodian	78		Palau	2		Arabic	1
	Carolinina	1		Pashto	1		Berber	1
	Cebuano	2		Persian	1		Cambodian	3
	Chamorro	3		Pilipino	4		Chamorro	1
	Chin	1		Portugese	2		Chinese-Mandarin	1
	Chinese-Cantonese	25		Punjabi	321		Chinese-Unspecified	2
	Chinese-Mandarin	14		Rumanian	25		Czech	2
	Chinese-Unspecified	42		Russian	172		French	5
	Chuuk	2		Rwanda	5		Ga	1
	Creole	6		Samoan	54		Hindi	1
	Dari	6		Serbo-Croatian	1		Hmong	5
	Dinka	1		Somali	430		Ilokano	1
	Dire	1		Spanish	1,878		Indonesian	2
	Ethiopic	10		Swahili	44		Japanese	3
	Farsi	24		Tagalog	110		Korean	1
	Fijian	2		Tamil	6		Lao	7
	French	23		Tarasco	1		Luganda	1
	Ga	1		Telugu	2		Mandingo	2
	Georgian	1		Thai	6		Nuer	1
	German	4		Tigrinya	12		Pilipino	2
	Greek, Modern	3		Toishanese	1		Punjabi	1
	Gujarati	8		Tongan	11		Rumanian	1
	Hawaiian	1		Turkish	68		Russian	26
	Hindi	50		Twi	3		Spanish	177
	Hmong	9		Ukrainian	339		Swahili	3
	Hoh	1		Unknown	49		Tagalog	14
	Ibo	1		Urdu	29		Taishan	1
	Ilokano	17		Vietnamese	296		Thai	1
	Indonesian	6		Wolof	2		Tibetan	1
	Japanese	14		Yap	1		Ukrainian	16
	Kanjobal	1		Yoruba	1		Unknown	1
	Karen	43	Kiona Benton(3)		231		Vietnamese	7
	Khmer	7		Ethiopic	3	Lake Washington(75)		1,583
	Kikuya	3		Italian	1		Albanian	1
	Kinyarwanda	1		Spanish	227		Amharic	2
	Kirgiz	1	Kittitas(1)		57		Arabic	28
	Kirundi	3		Spanish	57		Armenian	6
	Kmhmu	3	La Conner(4)		15		Azerbaijani	1
	Kongo	1		Arabic	1		Bengali	4

District	Language	Student	District	Language	Student	District	Language	Student
Lake Washington(75)	(continued)	1,583	Lake Washington(75)	(continued)	1,583	Lynden(12)		264
	Bosnian	2		Telugu	20		Punjabi	22
	Bulgarian	4		Thai	10		Russian	9
	Burmese	4		Tigrinya	2		Samoan	1
	Cambodian	11		Tongan	2		Spanish	210
	Carolinina	2		Turkish	10		Twi	2
	Chinese-Cantonese	20		Twi	1	Mabton(1)		432
	Chinese-Mandarin	31		Ukrainian	11		Spanish	432
	Chinese-Taiwanese	4		Unknown	4	Manson(1)		216
	Chinese-Unspecified	51		Urdu	18		Spanish	216
	Czech	5		Vietnamese	52	Marysville(36)		834
	Danish	6	Lakewood(9)		81		Arabic	6
	Dinka	3		Cambodian	2		Cambodian	4
	Dutch	12		Ga	1		Chinese-Cantonese	1
	Farsi	33		Haitian Creole	2		Chinese-Mandarin	1
	Finnish	1		Japanese	1		Chinese-Unspecified	6
	French	17		Russian	8		Chuuk	2
	Georgian	1		Spanish	48		Creole	1
	German	17		Tagalog	4		Egyptian-Arabic	1
	Greek, Modern	1		Ukrainian	12		German	1
	Gujarati	4		Vietnamese	3		Hindi	1
	Haitian Creole	1	Lind(2)		30		Hmong	1
	Hebrew, Modern	51		Inuktitut	1		Ilokano	2
	Hindi	28		Spanish	29		Indonesian	1
	Hmong	45	Longview(23)		392		Japanese	8
	Hungarian	5		Arabic	1		Korean	4
	Ibo	1		Bulgarian	1		Kurdish	2
	Italian	5		Cambodian	8		Lao	4
	Japanese	80		Chinese-Cantonese	4		Marshallese	12
	Kannada	4		Chinese-Mandarin	1		Mien	1
	Khmer	3		Chinese-Unspecified	2		Nepali	1
	Kikuya	1		Chuuk	17		Nuer	1
	Kirgiz	1		Creole	1		Pilipino	7
	Kirundi	1		French	1		Punjabi	24
	Korean	48		Haitian Creole	1		Rumanian	3
	Kurdish	1		Hawaiian	1		Russian	49
	Lao	9		Hindi	1		Slovak	1
	Lingala	2		Japanese	2		Spanish	567
	Malayalam	5		Khmer	1		Swahili	1
	Marathi	4		Pilipino	2		Tagalog	35
	Mongolian	3		Punjabi	5		Thai	5
	Nepali	2		Russian	6		Trukese	1
	Norwegian	2		Spanish	323		Ukrainian	43
	Oromo	1		Tagalog	1		Unknown	1
	Pilipino	1		Thai	1		Urdu	2
	Polish	12		Trukese	1		Vietnamese	32
	Portugese	35		Unknown	2		Yap	2
	Punjabi	8		Vietnamese	9	Mead(25)		216
	Pushtu	1	Lopez Island(3)				Amharic	7
	Rumanian	26		Japanese	1		Arabic	8
	Russian	93		Spanish	5		Bulgarian	1
	Samoan	3		Temne	1		Cakchiquel	1
	Serbo-Croatian	3	Lynden(12)		264		Chin	8
	Slovak	2		Amharic	2		Chinese-Cantonese	3
	Somali	5		Chinese-Unspecified	2		Chinese-Mandarin	2
	Spanish	629		Fra Fra	1		Chinese-Unspecified	1
	Swahili	3		German	3		Chuuk	2
	Swedish	11		Lithuanian	2		Ethiopic	1
	Tagalog	23		Luganda	1		Karen	1
	Tamil	24		Mixteco	9		Korean	17

District	Language	Student	District	Language	Student	District	Language	Student
Mead(25) (continued)		216	Monroe(20)		502	Mount Vernon(20) (continued)		1,686
	Marathi	1		Arabic	3		Mixteco	81
	Marshallese	57		Cambodian	1		Pilipino	1
	Moldavian	3		Chinese-Cantonese	1		Punjabi	1
	Navajo	2		Chinese-Unspecified	2		Rumanian	1
	Nepali	14		French	1		Russian	38
	Punjabi	1		Greek, Modern	1		Samoan	3
	Rumanian	8		Hindi	1		Spanish	1,480
	Russian	40		Hmong	10		Tagalog	7
	Spanish	23		Japanese	3		Ukrainian	18
	Swahili	1		Korean	1		Unknown	21
	Tagalog	2		Kurdish	1		Vietnamese	4
	Ukrainian	3		Lao	4	Mukilteo(64)		2,551
	Vietnamese	9		Rumanian	1		Amharic	11
Medical Lake(9)		11		Russian	8		Arabic	76
	German	1		Samoan	1		Bengali	1
	Hungarian	1		Spanish	454		Bisaya	1
	Japanese	1		Thai	1		Bosnian	3
	Korean	1		Ukrainian	6		Bulgarian	1
	Russian	1		Vietnamese	1		Cambodian	22
	Spanish	2		Yap	1		Chinese-Cantonese	7
	Tagalog	1	Montesano(1)		21		Chinese-Fukiense	1
	Thai	2		Spanish	21		Chinese-Mandarin	13
	Visayan	1	Moses Lake(13)		767		Chinese-Unspecified	18
Mercer Island(19)		96		Arabic	1		Chuuk	2
	Chinese-Cantonese	1		Bulgarian	1		Farsi	8
	Chinese-Mandarin	18		Chinese-Cantonese	1		Fijian	3
	Chinese-Unspecified	4		Chinese-Unspecified	1		French	23
	Farsi	1		Japanese	1		Fula	1
	Finnish	1		Kikuya	1		German	1
	French	3		Norwegian	2		Gujarati	1
	German	1		Russian	26		Hindi	6
	Hebrew, Modern	1		Spanish	693		Hmong	5
	Hindi	3		Tagalog	3		Hungarian	1
	Italian	2		Ukrainian	33		Ibo	1
	Japanese	10		Unknown	1		Igbo	3
	Korean	36		Vietnamese	3		Ilokano	1
	Nepali	1	Mossyrock(3)		42		Indonesian	37
	Persian	2		Chinese-Unspecified	1		Japanese	14
	Russian	4		Russian	1		Khmer	2
	Spanish	3		Spanish	40		Korean	111
	Swedish	3	Mount Adams(1)		146		Lao	14
	Tagalog	1		Spanish	146		Lingala	5
	Vietnamese	1	Mount Baker(6)		138		Malay	1
Meridian(12)		137		German	1		Mandingo	13
	Cambodian	2		Korean	1		Marquesan	1
	Chalchiteco	2		Pilipino	1		Marshallese	24
	Chinese-Mandarin	2		Russian	78		Mixteco	4
	Chinese-Unspecified	3		Spanish	47		Mongolian	5
	Dari	1		Ukrainian	10		Nepali	1
	Hindi	1	Mount Vernon(20)		1,686		Nigerian	2
	Mixteco	2		Amharic	1		Oromo	3
	Punjabi	16		Bemba	1		Pilipino	5
	Russian	10		Bulgarian	1		Polish	2
	Spanish	89		Chinese-Cantonese	1		Portugese	5
	Ukrainian	8		Chinese-Unspecified	3		Punjabi	26
	Vietnamese	1		Greek, Modern	1		Rumanian	5
Methow Valley(2)		8		Japanese	3		Russian	167
	Russian	1		Korean	2		Samoan	4
	Spanish	7		Marshallese	18		Serbo-Croatian	2

District	Language	Student	District	Language	Student	District	Language	Student
Mukilteo(64) (continued)		2,551	North Kitsap(23)		200	Northshore(61) (continued)		1,058
	Sinhalese	1		Thai	2		Cambodian	8
	Somali	9		Twi	1		Chinese-Cantonese	4
	Spanish	1,494		Vietnamese	6		Chinese-Mandarin	14
	Swahili	5	North Mason(8)		99		Chinese-Taiwanese	1
	Tagalog	41		Chinese-Cantonese	1		Chinese-Unspecified	29
	Tamil	3		Haitian Creole	1		Chuuk	1
	Telugu	4		Kanjobal	28		Danish	1
	Thai	4		Kannada	9		Dutch	1
	Tigrinya	3		Pilipino	1		Farsi	12
	Tongan	1		Spanish	57		Finnish	2
	Twi	1		Thai	1		French	4
	Ukrainian	166		Visayan	1		German	1
	Unknown	1	North Thurston(14)		613		Gujarati	4
	Urdu	16		Akan	1		Hebrew, Modern	1
	Vietnamese	124		Amharic	1		Hindi	10
	Wolof	14		Arabic	5		Hmong	3
	Yap	1		Cambodian	15		Hungarian	1
Naches Valley(1)		78		Carolinina	3		Igbo	1
	Spanish	78		Chamorro	2		Ilokano	2
Naselle Grays River(2)		5		Chinese-Mandarin	3		Indonesian	5
	Tagalog	2		Chinese-Unspecified	11		Italian	2
	Spanish	3		Chuuk	1		Japanese	18
Nooksack Valley(10)		206		Dutch	2		Kanjobal	1
	Aguateco	15		Ethiopic	2		Kannada	2
	Cambodian	2		Farsi	2		Khmer	3
	Chalchiteco	2		Fijian	1		Korean	57
	Mixteco	2		Ga	3		Krio	4
	Punjabi	4		German	4		Malayalam	6
	Russian	3		Greek, Modern	2		Marathi	5
	Spanish	174		Hindi	1		Mongolian	2
	Tagalog	1		Ilokano	1		Nepali	6
	Ukrainian	2		Japanese	2		Nuer	1
	Unknown	1		Khmer	1		Pilipino	5
North Franklin(5)		813		Korean	46		Polish	3
	Chinese-Cantonese	1		Lao	5		Portugese	8
	Chinese-Unspecified	2		Malay	1		Punjabi	17
	Ethiopic	3		Marquesan	1		Rumanian	19
	Lao	3		Marshallese	10		Russian	51
	Spanish	804		Pilipino	3		Serbo-Croatian	2
North Kitsap(23)		200		Punjabi	4		Sirayki	1
	Amharic	3		Russian	6		Slovenian	1
	Arabic	1		Samoan	25		Somali	3
	Bikol	1		Somali	1		Spanish	608
	Chinese-Cantonese	3		Spanish	331		Swahili	1
	Chinese-Mandarin	1		Tagalog	23		Tagalog	8
	Chinese-Unspecified	4		Telugu	2		Tamil	9
	Dutch	1		Thai	4		Telugu	10
	Hindi	1		Tibetan	1		Thai	9
	Japanese	5		Ukrainian	5		Tigrinya	4
	Korean	3		Unknown	3		Tongan	2
	Lao	1		Urdu	1		Ukrainian	7
	Malay	3		Vietnamese	75		Urdu	9
	Nepali	3		Visayan	2		Vietnamese	40
	Pilipino	1		Wolof	1		Wolof	1
	Punjabi	1	Northshore(61)		1,058		Yap	1
	Russian	3		Amharic	6		Yoruba	1
	Salish	6		Arabic	13	Oak Harbor(16)		126
	Samoan	5		Armenian	5		Burmese	1
	Spanish	130		Bengali	1		Chamorro	1
	Tagalog	15		Bulgarian	1		Chinese-Unspecified	1

District	Language	Student	District	Language	Student	District	Language	Student
Oak Harbor(16) (continued)		126	Onalaska(1)		24	Pateros(2)		39
	French	1		Spanish	24		Italian	1
	Indonesian	1	Orcas Island(3)		21		Spanish	38
	Japanese	23		Chinese-Unspecified	1	Paterson(1)		34
	Korean	1		Indonesian	1		Spanish	34
	Marshallese	1		Spanish	19	Peninsula(15)		57
	Polish	1	Orondo(1)		116		Amharic	2
	Russian	1		Spanish	116		Arabic	1
	Samoan	1	Oroville(3)		104		Chinese-Cantonese	1
	Spanish	52		German	1		Chinese-Mandarin	1
	Tagalog	37		Pilipino	1		Chinese-Unspecified	1
	Thai	2		Spanish	102		Danish	1
	Tibetan	1	Orting(8)		35		Japanese	2
	Vietnamese	1		Arabic	1		Korean	2
Ocean Beach(5)		36		Cambodian	1		Liberian	1
	Chinese-Mandarin	1		Lao	1		Russian	5
	Chinese-Unspecified	1		Russian	8		Samoan	3
	Pilipino	1		Samoan	1		Spanish	33
	Spanish	32		Spanish	21		Swahili	1
	Tagalog	1		Tagalog	1		Turkic	2
Ocosta (2)		46		Ukrainian	1		Urdu	1
	Pilipino	1	Othello(6)		1,512	Pomeroy(1)		2
	Spanish	45		Chinese-Cantonese	2		Spanish	2
Okanogan(1)		99		Mixteco	115	Port Angeles(13)		39
	Spanish	99		Navajo	1		Amharic	2
Olympia(31)		226		Portugese	1		Chinese-Cantonese	2
	Amharic	5		Spanish	1,392		Chinese-Unspecified	6
	Arabic	8		Urdu	1		Ethiopic	2
	Cambodian	6	Palisades(1)		15		Finnish	1
	Chinese-Cantonese	3		Spanish	15		German	1
	Chinese-Mandarin	5	Pasco(29)		5,774		Japanese	1
	Chinese-Unspecified	5		Amharic	7		Korean	3
	Ethiopic	2		Arabic	5		Punjabi	1
	Farsi	1		Bosnian	3		Russian	4
	French	1		Burmese	1		Spanish	14
	Ga	1		Chinese-Cantonese	1		Tagalog	1
	German	1		Chinese-Unspecified	1		Trukese	1
	Gujarati	1		Creole	1	Prescott(1)		63
	Hindi	6		Ethiopic	2		Spanish	63
	Kannada	1		Farsi	1	Prosser(4)		627
	Korean	11		French	1		Chinese-Unspecified	3
	Mandingo	1		Lao	13		Spanish	622
	Norwegian	1		Marshallese	11		Swahili	1
	Pilipino	1		Mixteco	1		Yoruba	1
	Polish	3		Moldavian	1	Pullman(922)		113
	Portugese	1		Pashto	1		Arabic	28
	Romansch	2		Portugese	1		Armenian	3
	Russian	3		Punjabi	1		Bengali	1
	Samoan	2		Russian	99		Chinese-Mandarin	2
	Somali	2		Sahaptian	1		Chinese-Unspecified	12
	Spanish	74		Somali	1		Farsi	1
	Sudanese-Arabic	2		Spanish	5,509		Hindi	3
	Tagalog	3		Sudanese-Arabic	1		Hungarian	1
	Tamil	1		Tagalog	3		Indonesian	2
	Telugu	2		Turkic	1		Korean	9
	Tibetan	1		Turkish	2		Malay	3
	Vietnamese	70		Ukrainian	71		Nepali	2
Omak(3)		93		Unknown	1		Persian	1
	Chinese-Cantonese	1		Vietnamese	32		Russian	6
	Spanish	89		Yakima	1		Shona	1
	Tarasco	3	Pateros(2)		39		Sindhi	1

District	Language	Student	District	Language	Student	District	Language	Student
Pullman(922)	(continued)	113	Quincy(3)		1,023	Renton(76)		2,445
	Spanish	24		French	1		Portugese	1
	Tagalog	1		Spanish	1,021		Punjabi	33
	Tajiki	1		Ukrainian	1		Rumanian	43
	Telugu	2	Raymond(4)		65		Russian	88
	Thai	3		Cambodian	2		Samoan	24
	Vietnamese	6		French	1		Serbo-Croatian	2
Puyallup(45)		720		Lao	12		Sinhalese	1
	American Sign	1		Spanish	50		Slovenian	1
	Amharic	3	Reardan-Edwall(2)		26		Somali	251
	Arabic	5		Russian	23		Soninke	2
	Cambodian	9		Spanish	3		Spanish	1,029
	Carolinina	1	Renton(76)		2,445		Swahili	15
	Cebuano	1		Amharic	16		Tagalog	76
	Chinese-Cantonese	1		Arabic	21		Tamil	1
	Chinese-Mandarin	3		Armenian	1		Tarasco	1
	Chinese-Unspecified	11		Bambara	1		Telugu	5
	Ethiopic	1		Bantu	3		Thai	2
	Farsi	8		Bassa	1		Tigrinya	4
	French	2		Bengali	5		Toishanese	5
	German	2		Bosnian	1		Tongan	3
	Hindi	10		Bulgarian	4		Turkish	4
	Ilokano	3		Burmese	7		Twi	1
	Japanese	7		Cambodian	20		Ukrainian	68
	Khmer	2		Cebuano	1		Unknown	2
	Korean	53		Cham	4		Urdu	5
	Kosraean	1		Chinese-Cantonese	84		Uzbek	3
	Kru	1		Chinese-Fukienese	4		Vietnamese	291
	Lao	3		Chinese-Mandarin	7		Visayan	5
	Liberian	4		Chinese-Unspecified	7		Wolof	7
	Luo	1		Fallani	2	Richland(31)		307
	Malay	1		Farsi	3		Albanian	1
	Marshallese	2		French	100		Amharic	1
	Nuer	1		German	9		Arabic	15
	Persian	2		Greek, Modern	13		Bangala	1
	Portugese	2		Haitian Creole	1		Bengali	2
	Punjabi	33		Hausa	1		Bosnian	2
	Rumanian	1		Hindi	6		Chinese-Cantonese	1
	Russian	30		Hmong	7		Chinese-Mandarin	2
	Samoan	26		Ilokano	14		Chinese-Unspecified	12
	Serbo-Croatian	1		Indonesian	5		Creole	1
	Somali	1		Italian	11		Ethiopic	3
	Soninke	2		Japanese	6		Farsi	1
	Spanish	424		Khmer	5		Italian	1
	Swahili	7		Korean	15		Japanese	1
	Tagalog	18		Krio	2		Korean	4
	Tamil	1		Kurdish	3		Lao	6
	Telugu	1		Lao	21		Marshallese	5
	Thai	1		Liberian	1		Mixteco	1
	Turkic	1		Luganda	3		Nepali	1
	Twi	2		Malay	1		Pashto	1
	Ukrainian	12		Mandingo	2		Punjabi	1
	Vietnamese	18		Mien	10		Russian	13
Quillayute Valley(6)		115		Moldavian	24		Spanish	166
	Kanjobal	3		Mongolian	4		Swahili	1
	Mam	12		Nuer	8		Tagalog	6
	Mixteco	6		Oromo	3		Telugu	1
	Russian	1		Palau	1		Thai	1
	Spanish	92		Pilipino	3		Ukrainian	35
	Vietnamese	1		Polish	1		Unknown	2

District	Language	Student	District	Language	Student	District	Language	Student
Richland(31) (continued)		307	Seattle(108)		6,798	Seattle(108) (continued)		6,798
	Urdu	1		Chuuk	5		Punjabi	17
	Vietnamese	18		Cornish	1		Quechua	1
Ridgefield(7)		81		Creole	1		Rumanian	4
	Chinese-Unspecified	1		Croatian	1		Russian	45
	Japanese	1		Czech	2		Samoan	37
	Pilipino	2		Danish	4		Serbo-Croatian	3
	Russian	33		Dari	1		Sinhalese	1
	Spanish	42		Dinka	3		Slovenian	1
	Urdu	1		Dutch	1		Somali	1,193
	Vietnamese	1		Ethiopic	6		Soninke	22
Riverside(4)		11		Fanti	1		Spanish	1,874
	Creole	1		Farsi	12		Swahili	71
	Nez Perce	1		Finnish	1		Tagalog	290
	Russian	6		French	35		Thai	28
	Spanish	3		Fula	1		Tibetan	8
Riverview(5)		67		German	5		Tigrinya	183
	Burmese	1		Greek, Modern	8		Tocharian	1
	Hmong	2		Gujarati	2		Toishanese	167
	Spanish	62		Haitian Creole	5		Tongan	12
	Swahili	1		Hausa	1		Turkish	2
	Thai	1		Hebrew, Modern	4		Twi	3
Rochester(6)		118		Hindi	19		Ukrainian	4
	German	1		Hmong	3		Unknown	63
	Khalkha	2		Hoh	1		Urdu	24
	Navajo	1		Hungarian	1		Vietnamese	932
	Pohnpeian	1		Ibo	2		Visayan	1
	Spanish	112		Icelandic (Old)	3		Wolof	5
	Vietnamese	1		Ilokano	93		Xhosa	2
Roosevelt(1)		16		Indonesian	1		Yoruba	3
	Spanish	16		Italian	5	Sedro-Woolley(12)		235
Royal(3)		714		Japanese	60		Amharic	2
	Mixteco	3		Karen	4		Chinese-Mandarin	1
	Spanish	707		Khmer	2		Korean	1
	Urdu	4		Kirundi	1		Marshallese	2
San Juan(5)		51		Kmhmu	1		Mixteco	4
	Chinese-Taiwanese	1		Korean	59		Oromo	1
	Indonesian	1		Krio	4		Russian	9
	Korean	1		Kru	1		Samoan	2
	Rumanian	1		Kurdish	1		Somali	1
	Spanish	47		Lao	44		Spanish	208
Seattle(108)		6,798		Latvian	3		Tagalog	3
	Afrikaans	1		Lingala	3		Ukrainian	1
	Akan	1		Lithuanian	1	Selah(2)		244
	Albanian	9		Malay	3		Russian	1
	Amharic	262		Malayalam	2		Spanish	243
	Arabic	79		Mandingo	9	Sequim(7)		43
	Bantu	2		Marathi	5		Chinese-Unspecified	1
	Bengali	2		Maya-Quiche	1		French	1
	Bisaya	1		Mien	29		Russian	3
	Bosnian	1		Mongolian	14		Spanish	34
	Bulgarian	9		Nepali	46		Tagalog	2
	Burmese	25		Norwegian	4		Thai	1
	Cambodian	114		Nuer	2		Vietnamese	1
	Carolinina	1		Oromo	163	Shelton(8)		339
	Cebuano	4		Palau	1		French	1
	Cham	14		Pashto	6		Korean	5
	Chao	2		Pilipino	3		Samoan	1
	Chinese-Cantonese	415		Polish	2		Somali	3
	Chinese-Mandarin	138		Portugese	5		Spanish	325
	Chinese-Unspecified	12		Pulau-Guai	2		Sudanese-Arabic	1

District	Language	Student	District	Language	Student	District	Language	Student
Shelton(8) (continued)		339	Snohomish(27)		312	Soap Lake(3) (continued)		88
	Swahili	2		Arabic	1		Spanish	57
	Thai	1		Armenian	1		Ukrainian	23
Shoreline(54)		680		Cambodian	5	South Bend(3)		88
	Albanian	1		Chinese-Unspecified	1		Cambodian	4
	Amharic	41		Danish	1		Chinese-Cantonese	1
	Arabic	17		Farsi	1		Spanish	83
	Bangala	3		French	3	South Kitsap(22)		108
	Berber	1		German	1		Afrikaans	1
	Bosnian	4		Greek, Modern	1		Amharic	2
	Bulgarian	4		Hindi	2		Arabic	1
	Cambodian	6		Hmong	1		Azerbaijani	1
	Chinese-Cantonese	29		Japanese	2		Carolinia	1
	Chinese-Mandarin	14		Khmer	1		Chamorro	3
	Chinese-Taiwanese	1		Korean	1		Chinese-Mandarin	1
	Chinese-Unspecified	9		Kurdish	1		Chinese-Unspecified	3
	Chuuk	3		Lao	2		Chuuk	3
	Ethiopic	1		Mandingo	3		Creole	2
	Fijian	1		Mandinka	1		German	1
	French	5		Mixteco	1		Gujarati	1
	Greek, Modern	1		Punjabi	8		Haitian Creole	1
	Hebrew, Modern	2		Rumanian	3		Japanese	9
	Hindi	5		Russian	26		Korean	1
	Hungarian	1		Spanish	206		Marshallese	2
	Ilokano	3		Tagalog	1		Russian	1
	Indonesian	2		Ukrainian	25		Samoan	7
	Japanese	5		Urdu	3		Spanish	44
	Javanese	2		Vietnamese	10		Tagalog	19
	Khmer	1	Snoqualmie Valley(27)		119		Thai	2
	Korean	72		Afrikaans	2		Vietnamese	2
	Mandingo	8		Arabic	4	South Whidbey(11)		15
	Mongolian	6		Chinese-Cantonese	1		Amharic	2
	Nepali	7		Chinese-Mandarin	2		Chinese-Unspecified	1
	Norwegian	3		Chinese-Unspecified	5		German	2
	Nuer	4		Danish	3		Haitian Creole	1
	Oromo	1		Dutch	1		Japanese	1
	Pashto	3		French	3		Liberian	1
	Pilipino	5		German	1		Mien	1
	Punjabi	7		Greek, Modern	1		Norwegian	1
	Pushtu	1		Hindi	3		Polish	1
	Russian	13		Hmong	2		Russian	1
	Samoan	4		Japanese	2		Spanish	3
	Sindhi	3		Korean	6	Spokane(60)		1,493
	Somali	12		Lao	1		Albanian	8
	Spanish	205		Norwegian	1		Amharic	14
	Swahili	10		Pilipino	1		Arabic	67
	Tagalog	34		Punjabi	4		Bosnian	26
	Telugu	1		Rumanian	1		Bulgarian	1
	Thai	5		Russian	2		Burmese	21
	Tibetan	1		Spanish	63		Chamorro	2
	Tigrinya	34		Tagalog	1		Chin	22
	Turkish	1		Tamil	1		Chinese-Mandarin	9
	Twi	3		Telugu	2		Chinese-Unspecified	15
	Ukrainian	5		Thai	2		Chungki	1
	Unknown	5		Turkish	1		Chuuk	24
	Urdu	10		Urdu	3		Creole	4
	Vietnamese	51	Soap Lake(3)		88		Croatian	1
	Wolof	4		Russian	8		Czech	1

District	Language	Student	District	Language	Student	District	Language	Student
Spokane(60) (continued)		1,493	Steilacoom(21)		84	Tacoma(55) (continued)		2,581
	Danish	1		Chinese-Unspecified	1		Dinka	3
	Dari	2		French	1		Ethiopic	1
	Ewe	2		German	3		French	3
	Farsi	6		Hungarian	1		Ga	1
	Fra Fra	1		Korean	18		German	1
	French	3		Kosraean	1		Haitian Creole	1
	Haitian Creole	1		Krio	1		Hawaiian	4
	Hawaiian	1		Pilipino	2		Hebrew, Modern	1
	Herero	1		Russian	3		Hindi	3
	Hindi	1		Samoan	4		Ilokano	4
	Hmong	18		Tagalog	6		Indonesian	1
	Ibanag	1		Tamil	2		Japanese	4
	Indonesian	1		Telugu	1		Khmer	10
	Jamaican	1		Thai	3		Kishinau	2
	Japanese	6		Turkish	1		Korean	40
	Karen	100		Vietnamese	3		Kosraean	1
	Kinyarwanda	6		Visayan	1		Lao	9
	Kirundi	11		Spanish	27		Luganda	2
	Korean	8	Stevenson-Carson(3)		33		Mandingo	5
	Krio	1		Korean	3		Marshallese	3
	Lao	7		Russian	1		Moldavian	41
	Marshallese	273		Spanish	29		Palau	1
	Moldavian	24	Sultan(6)		124		Pilipino	3
	Nepali	80		Byelorussian	1		Punjabi	3
	Pashto	5		Korean	9		Rumanian	8
	Pilipino	3		Lao	2		Russian	211
	Portugese	2		Spanish	109		Samoan	87
	Punjabi	7		Tagalog	2		Somali	18
	Pushtu	3		Thai	1		Spanish	1,348
	Rumanian	26	Sumner(12)		273		Stoney	3
	Russian	272		Amharic	1		Swahili	7
	Serbo-Croatian	7		Arabic	1		Tagalog	32
	Somali	5		Bulgarian	2		Thai	11
	Spanish	239		Cambodian	1		Turkish	2
	Swahili	15		Carolinina	1		Twi	1
	Tagalog	6		Punjabi	3		Ukrainian	70
	Thai	2		Russian	10		Unknown	6
	Tigrinya	3		Samoan	2		Urdu	11
	Tongan	5		Spanish	234		Vietnamese	318
	Turkish	3		Tagalog	7		Wolof	1
	Ukrainian	13		Ukrainian	7		Yoruba	1
	Unknown	12		Vietnamese	4	Tahoma(21)		141
	Urdu	2	Sunnyside(2)		2,147		Amharic	2
	Vietnamese	88		Arabic	4		Arabic	3
	Visayan	3		Spanish	2,143		Bantu	1
Stanwood-Camano(10)		100	Tacoma(55)		2,581		Chinese-Mandarin	1
	Amharic	5		Albanian	1		Chinese-Unspecified	1
	Chinese-Cantonese	1		Amharic	5		Fallani	1
	Chinese-Unspecified	2		Arabic	53		French	2
	Italian	2		Bantu	5		Hindi	1
	Korean	1		Bulgarian	2		Hmong	1
	Punjabi	1		Cambodian	196		Igbo	1
	Russian	2		Carolinina	6		Japanese	3
	Samoan	1		Cebuano	2		Korean	2
	Spanish	82		Chamorro	2		Lao	2
	Swahili	3		Chinese-Cantonese	4		Lithuanian	2
Steilacoom(21)		84		Chinese-Mandarin	6		Malayalam	1
	Cambodian	3		Chinese-Unspecified	12		Mien	2
	Chamorro	1		Cornish	1		Persian	1
	Chinese-Cantonese	1		Creole	4		Punjabi	2

District	Language	Student	District	Language	Student	District	Language	Student
Tahoma(21) (continued)		141	Tukwila(58) (continued)		1,220	University Place(23) (continued)		187
	Rumanian	1		Marathi	1		Moldavian	3
	Russian	10		Mien	2		Palau	1
	Somali	2		Nepali	94		Punjabi	2
	Spanish	80		Oromo	5		Romansch	1
	Swedish	1		Palau	1		Rumanian	1
	Tagalog	3		Persian	1		Russian	22
	Telugu	1		Pilipino	3		Samoan	3
	Ukrainian	11		Portugese	2		Slovak	1
	Vietnamese	3		Punjabi	12		Spanish	33
Tenino(4)		16		Rumanian	5		Tagalog	6
	Cambodian	2		Russian	36		Thai	1
	Hindi	1		Samoan	29		Twi	1
	Spanish	12		Serbo-Croatian	8		Ukrainian	3
	Tigrinya	1		Somali	166		Vietnamese	9
Toledo(2)		22		Soninke	2	Vancouver(58)		2,356
	Nepali	2		Spanish	400		Albanian	3
	Spanish	20		Swahili	2		Amharic	2
Tonasket(2)		166		Tagalog	21		Arabic	14
	Spanish	165		Tamil	1		Armenian	2
	Tagalog	1		Thai	2		Bosnian	10
Toppenish(4)		1,308		Tigrinya	11		Burmese	3
	Chinese-Unspecified	1		Tongan	3		Cambodian	11
	Sahaptian	1		Turkish	52		Chamorro	1
	Spanish	1,279		Unknown	41		Chin	7
	Yakima	27		Vietnamese	76		Chinese-Cantonese	3
Touchet(1)		26		Visayan	2		Chinese-Mandarin	4
	Spanish	26	Tumwater(20)		105		Chinese-Unspecified	3
Tukwila(58)		1,220		Acholi	1		Chungki	7
	Afrikaans	1		Amharic	4		Chuuk	55
	Amharic	11		Cambodian	2		Creole	1
	Arabic	19		Chinese-Cantonese	1		Farsi	1
	Armenian	1		Chinese-Mandarin	4		French	2
	Bantu	1		Chinese-Unspecified	3		Georgian	1
	Bassa	1		Ethiopic	2		Gujarati	1
	Bosnian	21		French	2		Haitian Creole	1
	Bulgarian	4		Hindi	2		Hawaiian	2
	Burmese	49		Japanese	1		Hindi	10
	Cambodian	15		Korean	1		Hmong	1
	Chin	27		Punjabi	2		Hungarian	2
	Chinese-Cantonese	3		Quechua	1		Italian	1
	Chinese-Mandarin	1		Rumanian	4		Japanese	1
	Chinese-Unspecified	6		Samoan	1		Karen	22
	Creole	1		Spanish	48		Korean	9
	Dari	1		Tagalog	6		Kosraean	1
	Farsi	5		Tamil	3		Lao	8
	French	9		Telugu	1		Malayalam	1
	Haitian Creole	1		Vietnamese	16		Mandingo	5
	Hindi	7	Union Gap(2)		189		Marshallese	1
	Hmong	1		Punjabi	1		Moldavian	7
	Ilokano	3		Spanish	188		Mordvin	1
	Indonesian	4	University Place(23)		187		Nepali	1
	Japanese	1		Afrikaans	1		Pohnpeian	7
	Kannada	1		Arabic	46		Pulau-Guai	2
	Karen	28		Cambodian	2		Punjabi	12
	Khmer	3		Chinese-Mandarin	4		Rumanian	31
	Kirundi	1		Chinese-Unspecified	4		Russian	371
	Kosraean	6		German	3		Samoan	6
	Lao	8		Korean	35		Spanish	1,457
	Malayalam	1		Kurdish	1		Sudanese-Arabic	1
	Mandingo	1		Marshallese	4		Swahili	1

District	Language	Student	District	Language	Student	District	Language	Student
Vancouver(58) (continued)		2,356	Wenatchee(10) (continued)		1,746	Yakima(14) (continued)		4,532
	Tagalog	13		Hmong	1		Chinese-Cantonese	1
	Tamil	1		Mam	2		Chinese-Unspecified	2
	Telugu	1		Punjabi	2		Farsi	1
	Thai	11		Russian	7		Khmer	1
	Tigrinya	1		Samoan	2		Pilipino	6
	Tongan	3		Spanish	1,714		Punjabi	2
	Trukese	3		Vietnamese	4		Russian	1
	Turkish	2	West Valley (Spk)(20)		114		Samoan	2
	Ukrainian	95		Amharic	3		Somali	4
	Unknown	37		Arabic	7		Spanish	4,501
	Urdu	3		Cambodian	1		Unknown	3
	Vietnamese	92		Carolinina	1		Vietnamese	3
	Visayan	1		Chinese-Mandarin	1	Yelm(10)		83
Vashon Island(6)		30		Chinese-Unspecified	1		Cambodian	1
	Chinese-Unspecified	1		Creole	1		French	2
	German	1		Dinka	2		German	3
	Pilipino	1		Ethiopic	1		Indonesian	2
	Russian	1		Hmong	4		Korean	1
	Spanish	25		Japanese	2		Marshallese	1
	Unknown	1		Marshallese	4		Spanish	70
Wahkiakum(2)		23		Moldavian	1		Tagalog	1
	Russian	18		Punjabi	1		Turkish	1
	Spanish	5		Russian	44		Vietnamese	1
Wahluke(1)		1,321		Somali	1	Zillah(1)		155
	Spanish	1,321		Spanish	32		Spanish	155
Walla Walla(10)		848		Tagalog	1			
	Chinese-Mandarin	2		Ukrainian	1			
	Chinese-Unspecified	2		Vietnamese	5			
	Ga	1	West Valley (Yak)(11)		196			
	German	2		Arabic	1			
	Gujarati	1		Chinese-Unspecified	1			
	Hindi	1		Gujarati	1			
	Lao	2		Hindi	1			
	Russian	8		Korean	3			
	Spanish	827		Punjabi	1			
	Tigrinya	2		Russian	3			
Wapato(4)		901		Spanish	177			
	Ilokano	8		Tamil	1			
	Pilipino	3		Urdu	3			
	Russian	1		Vietnamese	4			
	Spanish	889	White River(5)		45			
Warden(3)		377		Chinese-Cantonese	1			
	Czech	1		Chinese-Mandarin	1			
	Spanish	375		German	1			
	Tagalog	1		Spanish	41			
Washougal(7)		67		Urdu	1			
	Amharic	2	White Salmon(2)		197			
	Cambodian	1		Korean	1			
	Carolinina	1		Spanish	196			
	Ilokano	1	Winlock(2)		67			
	Japanese	1		Arabic	3			
	Russian	20		Spanish	64			
	Spanish	41	Woodland(4)		145			
Waterville(2)		21		Indonesian	1			
	Nez Perce	1		Mixteco	2			
	Spanish	20		Russian	2			
Wenatchee(10)		1,746		Spanish	140			
	Arabic	10	Yakima(14)		4,532			
	Ethiopic	3		Arabic	4			
	Hindi	1		Cambodian	1			

Appendix C

TBIP Enrollments by District

This appendix presents the ELL enrollment district data reported to the MSDR Bilingual database. The *Total Headcount* is the number of all students Grades K–12 enrolled in a Washington public school on October 1, 2010. The *TBIP Headcount* column is a count of unique students enrolled in TBIP (excluding waivers) on October 1, 2010, while *TBIP* count is the number of ELL students enrolled in TBIP at any point during the 2010–11 school year with multiple enrollments counted more than once.

District	Total Headcount	TBIP Enrolled		
		Headcount	% TBIP	Distinct
Statewide	1,008,569	93,586	8%	101,776
Aberdeen School District	3,332	238	7%	257
Adna School District	604	1	0%	1
Anacortes School District	2,754	57	2%	62
Arlington School District	5,476	186	3%	192
Auburn School District	14,684	1829	13%	1,998
Bainbridge Island School District	3,867	34	1%	35
Battle Ground School District	13,354	697	5%	748
Bellevue School District	18,123	1752	10%	1,966
Bellingham School District	10,919	624	6%	663
Bethel School District	17,422	315	2%	358
Blaine School District	2,200	101	5%	102
Bremerton School District	5,175	131	3%	147
Brewster School District	962	398	41%	420
Bridgeport School District	800	341	43%	359
Burlington School District	3,739	685	18%	738
Camas School District	5,966	112	2%	119
Cascade School District	1,252	173	14%	183
Cashmere School District	1,432	221	15%	229
Castle Rock School District	1,390	31	2%	32
Central Kitsap School District	11,568	239	2%	281
Central Valley School District	12,600	251	2%	276
Centralia School District	3,491	327	9%	353
Chehalis School District	2,900	73	3%	110
Cheney School District	3,989	79	2%	86
Chewelah School District	914	3	0%	3
Chimacum School District	1,117	13	1%	14
Clarkston School District	2,753	18	1%	21
Cle Elum-Roslyn School District	939	20	2%	21
Clover Park School District	12,213	1293	11%	1,458
College Place School District	779	176	23%	196
Columbia (Walla) School District	868	94	11%	104
Colville School District	2,844	55	2%	59
Conway School District	431	28	7%	30

District	Total Headcount	TBIP Enrolled		
		Headcount	% TBIP	Distinct
Statewide	1,008,569	93,586	8%	101,776
Coupeville School District	1,024	34	3%	36
Deer Park School District	2,562	4	0%	4
Dieringer School District	1,432	17	1%	20
East Valley (Spokane) School District	4,472	163	4%	182
East Valley (Yak) School District	2,931	262	9%	286
Eastmont School District	5,655	949	17%	994
Eatonville School District	2,009	11	1%	11
Edmonds School District	20,659	2077	10%	2,259
Ellensburg School District	3,030	219	7%	236
Elma School District	1,682	97	6%	103
Entiat School District	346	49	14%	50
Enumclaw School District	4,608	183	4%	198
Ephrata School District	2,327	195	8%	217
Everett School District	18,857	1780	9%	1,969
Evergreen (Clark) School District	25,856	2176	8%	2,386
Federal Way School District	22,178	3103	14%	3,395
Ferndale School District	5,299	236	5%	256
Fife School District	3,523	373	11%	409
Finley School District	999	138	14%	161
Franklin Pierce School District	6,495	636	10%	703
Goldendale School District	1,040	35	3%	40
Grandview School District	3,596	1179	33%	1,267
Granger School District	1,522	560	37%	610
Granite Falls School District	2,325	26	1%	29
Highland School District	1,180	272	23%	296
Highline School District	17,968	3867	22%	4,160
Hockinson School District	1,993	23	1%	23
Hoquiam School District	1,824	52	3%	52
Issaquah School District	17,297	693	4%	766
Kelso School District	4,930	207	4%	225
Kennewick School District	16,444	2025	12%	2,209
Kent School District	26,992	4403	16%	4,880
Kiona Benton School District	1,515	221	15%	231
Kittitas School District	687	50	7%	57
La Conner School District	624	13	2%	15
Lacenter School District	1,571	20	1%	23
Lake Chelan School District	1,398	333	24%	362
Lake Quinalt School District	200	35	18%	37
Lake Stevens School District	8,086	277	3%	298
Lake Washington School District	24,330	1445	6%	1,583

District	Total Headcount	TBIP Enrolled		
		Headcount	% TBIP	Distinct
Statewide	1,008,569	93,586	8%	101,776
Lakewood School District	2,417	70	3%	81
Lind School District	215	23	11%	30
Longview School District	7,014	348	5%	392
Lopez Island School District	224	7	3%	7
Lynden School District	2,833	239	8%	264
Mabton School District	927	389	42%	432
Manson School District	572	202	35%	216
Marysville School District	11,650	763	7%	834
Mead School District	9,597	186	2%	216
Medical Lake School District	1,759	8	1%	11
Mercer Island School District	4,205	70	2%	96
Meridian School District	2,287	128	6%	137
Methow Valley School District	552	8	1%	8
Monroe School District	7,822	479	6%	502
Montesano School District	1,253	17	1%	21
Moses Lake School District	7,764	695	9%	767
Mossyrock School District	586	42	7%	42
Mount Adams School District	1,027	141	14%	146
Mount Baker School District	2,120	133	6%	138
Mount Vernon School District	6,399	1603	25%	1,686
Mukilteo School District	14,717	2412	16%	2,551
Naches Valley School District	1,466	71	5%	78
Naselle Grays River School District	403	5	1%	5
Nooksack Valley School District	1,598	181	11%	206
North Franklin School District	2,037	740	36%	813
North Kitsap School District	6,661	192	3%	200
North Mason School District	2,222	95	4%	99
North Thurston School District	14,177	543	4%	613
Northshore School District	19,737	972	5%	1,058
Oak Harbor School District	5,743	110	2%	126
Ocean Beach School District	926	31	3%	36
Ocosta School District	687	44	6%	46
Okanogan School District	1,102	92	8%	99
Olympia School District	9,387	202	2%	226
Omak School District	2,664	91	3%	93
Onalaska School District	811	24	3%	24
Orcas Island School District	707	19	3%	21
Orondo School District	187	103	55%	116
Oroville School District	649	92	14%	104
Orting School District	2,297	33	1%	35

District	Total	TBIP Enrolled		
	Headcount	Headcount	% TBIP	Distinct
Statewide	1,008,569	93,586	8%	101,776
Othello School District	3,811	1425	37%	1,512
Palisades School District	16	14	88%	15
Pasco School District	15,158	5465	36%	5,774
Pateros School District	308	30	10%	39
Paterson School District	78	30	39%	34
Peninsula School District	9,265	51	1%	57
Pomeroy School District	329	2	1%	2
Port Angeles School District	3,951	37	1%	39
Prescott School District	225	56	25%	63
Prosser School District	2,910	594	20%	627
Pullman School District	2,428	91	4%	113
Puyallup School District	20,906	640	3%	720
Quillayute Valley School District	4,207	112	3%	115
Quincy School District	2,481	956	39%	1,023
Raymond School District	868	55	6%	65
Reardan-Edwall School District	639	26	4%	26
Renton School District	14,429	2196	15%	2,445
Richland School District	11,280	269	2%	307
Ridgefield School District	2,137	68	3%	81
Riverside School District	1,631	9	1%	11
Riverview School District	3,111	65	2%	67
Rochester School District	2,310	108	5%	118
Roosevelt School District	30	15	50%	16
Royal School District	1,530	650	43%	714
San Juan School District	867	46	5%	51
Seattle School District	47,735	6251	13%	6,798
Sedro-Woolley School District	4,259	204	5%	235
Selah School District	3,404	229	7%	244
Sequim School District	2,867	36	1%	43
Shelton School District	4,244	321	8%	339
Shoreline School District	8,920	608	7%	680
Snohomish School District	9,992	280	3%	312
Snoqualmie Valley School District	6,154	114	2%	119
Soap Lake School District	362	82	23%	88
South Bend School District	545	83	15%	88
South Kitsap School District	9,910	101	1%	108
South Whidbey School District	1,678	15	1%	15
Spokane School District	29,050	1349	5%	1,493
Stanwood-Camano School District	4,961	89	2%	100
Steilacoom School District	4,590	71	2%	84

District	Total Headcount	TBIP Enrolled		
		Headcount	% TBIP	Distinct
Statewide	1,008,569	93,586	8%	101,776
Stevenson-Carson School District	1,348	30	2%	33
Sultan School District	2,080	112	5%	124
Sumner School District	8,142	249	3%	273
Sunnyside School District	6,234	1966	32%	2,147
Tacoma School District	28,753	2354	8%	2,581
Tahoma School District	7,507	131	2%	141
Tenino School District	1,253	11	1%	16
Toledo School District	852	19	2%	22
Tonasket School District	1,116	146	13%	166
Toppenish School District	3,616	1228	34%	1,308
Touchet School District	272	26	10%	26
Tukwila School District	2,930	1101	38%	1,220
Tumwater School District	6,239	94	2%	105
Union Gap School District	603	159	26%	189
University Place School District	5,577	150	3%	187
Vancouver School District	22,638	2136	9%	2,356
Vashon Island School District	1,554	27	2%	30
Wahkiakum School District	471	22	5%	23
Wahluke School District	1,523	1282	84%	1,321
Walla Walla School District	6,406	809	13%	848
Wapato School District	3,376	856	25%	901
Warden School District	1,002	349	35%	377
Washougal School District	2,986	54	2%	67
Waterville School District	279	21	8%	21
Wenatchee School District	7,709	1606	21%	1,746
West Valley (Spk) School District	3,803	105	3%	114
West Valley (Yak) School District	4,959	169	3%	196
White River School District	4,081	41	1%	45
White Salmon School District	1,278	190	15%	197
Winlock School District	789	60	8%	67
Woodland School District	2,141	125	6%	145
Yakima School District	14,889	4253	29%	4,532
Yelm School District	5,518	79	1%	83
Zillah School District	1,345	143	11%	155

Appendix D

Length of Program Participation by District

This appendix presents the number of ELL students who took the WLPT-II annual test, the number and percent who transitioned from the TBIP by demonstrating English proficiency, and the percent of these transitioning students that participated two or more years. Student counts do not reflect district entries into the MSDR TBIP database after October 18, 2010.

Mean Calendar Years in Program at End of 2010–11

District	All TBIP				Upon Transition			
	Median	Mean	Standard	Students	Median	Mean	Standard	Students
Statewide	2.76	3.33	2.70	97,895	2.82	3.86	2.60	18,137
Aberdeen	2.78	3.76	2.98	248	3.79	4.13	3.02	42
Adna	2.05	2.05	-	1				
Anacortes	2.78	3.41	2.46	61	2.59	2.78	1.44	12
Arlington	2.78	3.28	2.14	181	3.82	4.11	1.97	28
Auburn	2.76	3.28	2.57	1,908	3.78	4.23	2.72	383
Bainbridge Island	1.99	2.70	1.91	34	3.80	3.55	1.80	11
Battle Ground	2.76	3.37	2.55	720	3.80	3.92	2.41	166
Bellevue	1.79	2.26	1.89	1,908	1.83	2.36	1.81	595
Bellingham	2.75	3.21	2.53	647	2.96	3.72	2.34	116
Bethel	2.39	3.00	2.42	342	2.82	3.27	1.93	72
Blaine	2.84	3.93	2.99	99	3.82	3.91	2.24	25
Bremerton	2.02	2.90	2.72	142	2.80	4.07	3.01	28
Brewster	2.78	3.88	3.08	413	4.77	5.35	3.03	54
Bridgeport	3.60	3.90	2.63	341	3.82	4.61	2.21	54
Burlington	2.76	3.84	3.00	697	4.81	5.35	2.92	67
Camas	1.76	2.32	2.08	117	2.65	2.79	2.18	35
Cascade	2.78	3.57	2.66	176	5.32	5.40	2.53	30
Cashmere	2.78	3.55	2.63	224	3.78	4.33	2.63	43
Castle Rock	3.54	3.60	2.39	32	2.77	2.77	-	1
Central Kitsap	1.77	2.39	2.04	275	2.21	2.70	1.75	58
Central Valley	1.79	2.77	2.24	266	2.36	2.48	1.76	49
Centralia	2.77	3.18	2.31	333	3.80	4.35	1.99	55
Chehalis	2.97	4.18	3.55	102	5.30	6.28	4.00	20
Cheney	1.76	2.47	2.17	84	2.68	3.31	2.39	21
Chewelah	2.74	2.74	1.99	3	4.73	4.73	-	1
Chimacum	2.76	2.45	1.68	14	1.77	1.83	1.26	5
Clarkston	2.80	3.08	1.74	21	4.24	4.15	1.45	4
Cle Elum-Roslyn	2.28	2.60	1.86	19	3.72	3.73	0.02	3
Clover Park	1.78	2.74	2.24	1,369	2.81	3.26	2.14	272
College Place	2.75	2.96	2.06	189	3.56	3.22	1.90	27
Columbia (Walla)	3.73	4.19	3.06	95	2.80	4.19	2.96	10

District	All TBIP				Upon Transition			
	Median	Mean	Standard	Students	Median	Mean	Standard	Students
Statewide	2.76	3.33	2.70	97,895	2.82	3.86	2.60	18,137
Colville	1.76	2.91	2.18	59	3.78	3.63	2.09	15
Conway	4.75	4.12	2.81	28				
Coupeville	1.98	2.73	2.42	35	5.32	5.31	2.16	5
Deer Park	0.74	0.96	0.44	4				
Dieringer	2.01	2.60	1.43	20	3.33	3.15	1.34	7
East Valley (Spk)	1.76	2.68	2.46	182	2.79	3.44	2.73	58
East Valley (Yak)	2.72	3.05	2.24	277	2.77	3.12	1.97	49
Eastmont	2.81	3.92	3.06	960	3.80	4.52	2.93	178
Eatonville	1.76	3.12	2.51	11	2.24	2.24	0.68	2
Edmonds	2.14	2.80	2.21	2,221	2.80	3.26	2.12	528
Ellensburg	2.80	3.36	2.57	231	4.72	5.34	2.83	39
Elma	2.76	3.12	2.09	102	3.80	4.24	1.79	15
Entiat	2.46	3.55	2.68	48	4.82	5.09	2.65	11
Enumclaw	2.78	3.56	2.70	184	4.77	5.11	2.53	35
Ephrata	2.77	3.83	3.03	207	3.78	4.64	2.96	43
Everett	2.66	2.94	2.29	1,926	2.81	3.58	2.22	399
Evergreen (Clark)	2.67	2.96	2.33	2,328	2.82	3.55	2.31	521
Federal Way	2.39	2.85	2.17	3,238	2.82	3.30	2.00	757
Ferndale	2.31	3.01	2.24	247	2.81	3.80	1.98	71
Fife	2.75	3.53	2.84	391	3.75	4.52	2.93	72
Finley	2.80	3.91	3.15	149	2.83	3.78	3.06	24
Franklin Pierce	2.65	3.11	2.48	663	2.82	3.67	2.55	154
Goldendale	3.78	4.54	2.86	36	2.82	4.61	2.48	5
Grandview	2.84	3.89	2.78	1,188	3.80	4.39	2.89	244
Granger	4.06	4.41	3.20	570	4.15	4.85	3.29	71
Granite Falls	3.68	3.82	2.63	28				
Highland	1.79	2.75	2.24	288	2.82	3.70	2.23	60
Highline	2.77	3.27	2.60	3,977	3.82	4.36	2.87	625
Hockinson	2.56	3.16	1.86	23	3.21	3.19	0.58	4
Hoquiam	1.73	2.47	2.49	47	2.31	3.91	2.98	8
Issaquah	1.78	2.48	2.10	742	1.82	2.26	1.74	239
Kelso	2.79	3.48	2.62	220	3.80	4.57	2.75	56
Kennewick	2.74	3.44	2.88	2,080	2.89	4.08	2.81	330
Kent	2.70	3.07	2.43	4,709	2.82	3.75	2.34	847
Kiona-Benton	2.82	4.03	3.26	217	2.84	4.65	3.47	26
Kittitas	3.04	3.49	2.70	56	4.76	6.57	4.49	5
La Center	1.77	3.10	2.81	19	2.80	2.80	-	1
LaConner	0.79	1.64	1.10	7	2.82	2.31	1.01	4
Lake Chelan	2.77	3.51	2.73	343	3.80	4.46	2.46	73
Lake Quinalt	2.76	4.43	3.40	37	8.79	8.79	5.40	2

District	All TBIP				Upon Transition			
	Median	Mean	Standard	Students	Median	Mean	Standard	Students
Statewide	2.76	3.33	2.70	97,895	2.82	3.86	2.60	18,137
Lake Stevens	2.74	2.97	2.30	269	3.55	4.03	2.26	47
Lake Washington	1.74	2.17	1.91	1,542	1.82	2.23	1.72	501
Lakewood	2.38	2.87	2.16	78	4.62	4.40	1.66	18
Lind	2.16	3.74	3.32	28	1.58	2.91	2.64	9
Longview	2.77	3.35	2.79	383	3.02	4.11	2.89	50
Lopez	2.77	2.80	2.24	7				
Lynden	2.78	3.59	2.72	257	3.78	4.41	2.69	39
Mabton	3.71	4.21	3.24	414	3.84	3.74	2.72	31
Manson	3.75	4.01	2.95	211	4.26	5.14	3.24	45
Marysville	2.78	3.57	2.62	801	3.79	4.32	2.54	158
Mead	1.80	2.73	2.17	200	3.34	4.00	2.16	42
Medical Lake	0.56	1.79	2.02	11	1.76	1.69	1.09	3
Mercer Island	0.79	1.15	0.82	95	1.80	1.64	0.84	41
Meridian	2.82	3.58	2.43	135	3.82	4.35	1.81	29
Methow Valley	2.77	3.72	2.95	8	3.63	4.20	2.97	4
Monroe	2.76	3.14	2.21	488	2.81	3.65	2.11	83
Montesano	2.78	2.99	1.69	20	2.80	3.25	1.37	11
Moses Lake	2.38	3.14	2.63	736	2.82	3.48	2.49	167
Mossyrock	2.77	3.11	2.31	40	4.72	4.78	3.02	3
Mount Adams	3.03	4.05	3.03	138	3.72	4.48	1.90	9
Mount Baker	4.33	4.73	3.39	136	4.78	5.59	3.12	28
Mount Vernon	2.80	3.78	2.91	1,611	4.00	4.95	2.98	254
Mukilteo	1.82	2.75	2.12	2,425	2.81	3.23	1.86	575
Naches Valley	2.78	3.37	2.53	76	2.81	3.14	1.73	11
Naselle	3.78	5.62	2.55	5	8.47	8.47	-	1
Nooksack	2.76	3.57	2.71	196	3.40	4.02	2.25	35
North Franklin	2.84	4.10	3.24	769	3.83	4.61	2.89	136
North Kitsap	2.77	3.45	2.68	194	3.77	4.22	2.69	45
North Mason	2.75	3.67	3.05	96	2.80	4.87	3.81	15
North Thurston	1.77	2.68	2.22	594	2.77	3.21	1.86	109
Northshore	2.11	2.84	2.30	1,039	2.80	3.21	2.26	258
Oak Harbor	2.40	2.89	2.24	120	2.21	2.60	1.62	20
Ocean Beach	1.77	3.26	3.03	36	1.79	2.21	1.38	7
Ocosta	1.76	2.88	2.72	45	3.80	3.86	1.50	5
Okanogan	2.76	3.68	3.04	93	3.80	4.64	3.34	12
Olympia	1.76	2.35	2.07	217	2.78	3.11	2.11	58
Omak	2.99	3.67	2.62	90	3.80	4.95	3.25	13
Onalaska	1.82	3.19	2.31	23	2.31	2.56	0.94	4
Orcas Island	1.72	2.25	1.87	20	2.59	2.59	-	1
Orondo	2.79	3.13	2.13	115	2.84	3.64	1.65	19

District	All TBIP				Upon Transition			
	Median	Mean	Standard	Students	Median	Mean	Standard	Students
Statewide	2.76	3.33	2.70	97,895	2.82	3.86	2.60	18,137
Oroville	2.28	3.29	3.07	91	2.72	5.28	4.39	7
Orting	1.80	3.03	2.75	35	2.65	3.06	2.28	7
Othello	3.43	3.94	2.93	1,456	3.82	4.73	2.67	205
Palisades	2.77	2.73	2.02	15	4.29	4.31	1.72	4
Pasco	3.80	4.30	3.15	5,582	4.87	5.57	2.99	627
Pateros	1.78	2.52	2.23	35	2.80	2.53	1.41	10
Paterson	3.77	3.93	2.29	32	3.80	3.47	1.52	3
Peninsula	1.67	2.25	2.07	56	4.74	3.96	1.64	5
Pomeroy	2.55	2.55	1.04	2	1.82	1.82	-	1
Port Angeles	2.75	2.67	1.54	39	2.76	2.97	0.79	12
Prescott	4.80	4.61	3.38	56	4.84	5.00	3.08	20
Prosser	2.84	3.65	2.59	606	3.84	4.81	2.76	101
Pullman	0.80	1.62	1.63	111	1.84	1.82	1.17	25
Puyallup	2.31	2.80	2.14	702	2.81	3.41	2.15	138
Quillayute Valley	2.78	3.87	2.98	115	5.80	6.15	2.29	14
Quincy	2.82	3.93	2.99	974	2.82	4.13	2.85	188
Raymond	3.77	3.89	2.55	61	2.82	3.65	1.48	13
Reardan-Edwall	0.57	1.46	2.44	24	0.60	1.80	2.95	6
Renton	1.82	2.70	2.17	2,337	2.80	3.32	2.19	457
Richland	2.76	3.28	2.57	295	3.54	3.93	2.53	62
Ridgefield	1.76	2.74	2.25	78	3.32	3.79	1.87	8
Riverside	2.64	2.29	1.31	9	2.68	2.68	-	1
Riverview	1.83	2.28	1.46	66	2.82	3.01	1.42	27
Rochester	2.78	3.54	2.79	109	4.07	4.52	3.25	14
Roosevelt	1.76	2.71	2.47	14	5.70	5.70	-	1
Royal	2.82	3.78	2.81	676	3.76	4.26	2.46	95
San Juan Island	1.76	2.66	2.11	50	4.23	4.00	1.87	8
Seattle	2.78	3.36	2.82	6,581	3.14	3.88	2.60	1,289
Sedro-Woolley	3.75	4.27	3.16	229	4.79	5.40	3.02	55
Selah	3.72	4.03	2.92	242	3.78	4.27	2.55	53
Sequim	1.81	3.00	2.56	39	2.79	2.69	1.35	12
Shelton	2.08	2.80	2.15	301	2.82	3.69	1.97	47
Shoreline	1.78	2.43	2.02	659	2.82	3.15	2.09	145
Snohomish	2.76	3.12	2.52	306	2.81	3.65	2.38	66
Snoqualmie Valley	1.78	2.48	2.14	117	1.83	2.48	1.42	23
Soap Lake	3.57	4.01	2.88	84	3.83	4.88	2.99	24
South Bend	2.78	3.41	2.82	81	2.84	3.52	2.50	9
South Kitsap	1.80	2.63	2.27	106	2.21	2.93	2.03	20
South Whidbey	1.99	2.38	1.61	15	2.26	2.54	1.78	5
Spokane	2.12	2.89	2.34	1,423	3.35	3.93	2.19	205

District	All TBIP				Upon Transition			
	Median	Mean	Standard	Students	Median	Mean	Standard	Students
Statewide	2.76	3.33	2.70	97,895	2.82	3.86	2.60	18,137
Stanwood	2.82	4.00	3.12	100	6.83	6.59	3.41	13
Steilacoom	1.76	2.10	1.53	84	2.43	2.24	1.01	25
Stevenson	1.78	2.63	2.44	33	2.79	3.79	3.84	4
Sultan	2.78	3.89	3.11	121	2.82	4.27	2.66	19
Sumner	2.82	3.72	2.72	255	3.80	4.29	2.44	41
Sunnyside	2.80	3.66	2.76	2,054	3.81	4.19	2.46	338
Tacoma	1.96	2.85	2.22	2,479	2.82	3.28	1.98	429
Tahoma	2.76	3.00	1.93	128	3.80	3.98	1.91	30
Tenino	2.82	2.66	2.17	15	2.82	2.48	0.58	3
Toledo	2.74	3.45	2.39	21	5.81	5.81	-	1
Tonasket	1.77	2.83	2.62	156	3.82	4.29	2.76	19
Toppenish	2.80	4.02	3.10	1,245	3.83	4.47	3.07	174
Touchet	2.13	3.23	2.83	26	2.86	3.94	1.49	5
Tukwila	1.80	2.67	2.31	1,157	2.80	3.09	1.96	166
Tumwater	1.74	2.47	2.18	102	2.80	3.12	1.91	23
Union Gap	2.13	2.70	2.04	177	2.84	3.50	2.17	23
University Place	1.76	2.15	1.77	178	2.78	2.97	1.58	40
Vancouver	2.27	2.94	2.39	2,294	2.82	3.51	2.18	379
Vashon Island	2.74	2.81	2.27	28	2.80	2.81	2.30	5
Wahkiakum	2.33	3.07	2.28	23	4.80	4.05	2.34	12
Wahluke	3.33	4.12	3.13	1,263	4.83	6.02	3.61	196
Walla Walla	3.66	4.10	3.14	830	4.78	5.31	3.03	153
Wapato	3.77	4.64	3.28	858	2.81	4.27	3.02	62
Warden	2.85	3.96	3.00	371	3.73	4.56	2.97	54
Washougal	2.67	3.21	2.70	60	2.80	4.06	2.13	15
Waterville	7.74	6.38	3.64	15	7.82	7.55	2.18	7
Wenatchee	3.16	3.93	2.97	1,694	4.79	5.36	3.01	302
West Valley (Spk)	2.77	3.61	2.64	114	3.80	4.02	2.25	33
West Valley (Yak)	0.78	2.35	2.71	195	3.84	4.56	1.90	10
White River	1.76	2.88	2.48	45	4.53	5.38	3.05	6
White Salmon Valley	3.71	4.03	2.88	196	3.82	4.63	2.93	22
Winlock	3.16	3.86	2.91	60	4.29	4.16	2.38	12
Woodland	1.83	2.54	2.00	143	3.81	3.80	1.49	22
Yakima	2.82	4.08	3.31	4,415	3.22	4.43	3.16	643
Yelm	1.77	2.56	2.10	79	2.82	3.46	1.98	25
Zillah	2.86	4.23	2.96	152	2.86	4.42	2.87	48

Based upon entry and exit dates. If no exit date was available, June 14, 2011 was used.

Appendix E

Making Progress and English Language Proficiency Attainment

Appendix E represents the percentage of students by district who made progress towards acquiring English from the previous school year (Table E-1) and the percentage of students who have met the exit criteria and have transition from the TBIP (Table E-2). Districts with fewer than 30 students testing during any school year are omitted from this table.

Table E-1: Percentage Making Gains

Percentage of Students Making Gains in English Proficiency					
District	2006–07	2007–08	2008–09	2009–10	2010–11
Aberdeen SD	56%	76%	70%	66%	75%
Arlington SD	75%	69%	73%	70%	75%
Auburn SD	70%	81%	79%	70%	81%
Battle Ground SD	74%	77%	73%	74%	83%
Bellevue SD	68%	87%	78%	79%	84%
Bellingham SD	67%	80%	77%	68%	82%
Bethel SD	65%	77%	79%	68%	82%
Blaine SD	66%	81%	61%	63%	82%
Bremerton SD	74%	83%	83%	73%	77%
Brewster SD	60%	78%	68%	51%	73%
Bridgeport SD	71%	66%	72%	56%	76%
Burlington SD	60%	64%	74%	60%	79%
Camas SD	74%	90%	84%	67%	77%
Cascade SD	74%	79%	74%	81%	79%
Cashmere SD	79%	65%	58%	73%	71%
Central Kitsap SD	77%	76%	80%	70%	78%
Central Valley SD	80%	84%	74%	67%	77%
Centralia SD	66%	78%	67%	67%	85%
Chehalis SD	50%	83%	70%	66%	87%
Cheney SD	75%	78%	78%	80%	67%
Clover Park SD	70%	84%	79%	67%	78%
College Place SD	78%	69%	85%	77%	68%
Columbia (Walla) SD	35%	68%	61%	70%	76%
East Valley (Spk) SD	78%	69%	89%	41%	98%
East Valley (Yak) SD	61%	80%	74%	54%	68%
Eastmont SD	62%	75%	72%	59%	78%
Edmonds SD	79%	75%	79%	73%	81%
Ellensburg SD	67%	78%	70%	69%	73%
Elma SD	66%	75%	85%	78%	78%
Enumclaw SD	77%	76%	66%	59%	84%
Ephrata SD	69%	71%	69%	62%	77%
Everett SD	75%	80%	78%	74%	75%
Evergreen (Clark) SD	72%	82%	83%	70%	84%

Percentage of Students Making Gains in English Proficiency					
District	2006–07	2007–08	2008–09	2009–10	2010–11
Federal Way SD	74%	80%	81%	69%	83%
Ferndale SD	69%	80%	80%	77%	83%
Fife SD	69%	77%	71%	66%	77%
Finley SD	72%	77%	81%	70%	80%
Franklin Pierce SD	71%	76%	82%	71%	82%
Grandview SD	60%	81%	68%	59%	83%
Granger SD	62%	71%	61%	54%	72%
Highland SD	80%	82%	73%	68%	81%
Highline SD	74%	76%	75%	67%	70%
Issaquah SD	69%	80%	80%	69%	77%
Kelso SD	68%	82%	74%	69%	74%
Kennewick SD	68%	73%	73%	63%	75%
Kent SD	67%	81%	81%	71%	78%
Kiona-Benton SD	61%	77%	54%	55%	74%
Lake Chelan SD	70%	82%	73%	62%	89%
Lake Stevens SD	71%	77%	73%	68%	85%
Lake Washington SD	76%	84%	87%	80%	86%
Lakewood SD	86%	89%	76%	59%	87%
Longview SD	74%	75%	71%	61%	70%
Lynden SD	76%	75%	69%	67%	80%
Mabton SD	56%	69%	59%	49%	54%
Manson SD	76%	78%	69%	67%	83%
Marysville SD	69%	70%	68%	60%	80%
Mead SD	66%	80%	82%	65%	89%
Meridian SD	79%	82%	74%	74%	87%
Monroe SD	62%	72%	77%	72%	79%
Moses Lake SD	76%	72%	75%	70%	75%
Mount Adams SD	55%	75%	68%	60%	63%
Mount Baker SD	58%	63%	78%	64%	89%
Mount Vernon SD	61%	71%	75%	59%	78%
Mukilteo SD	72%	87%	85%	76%	81%
Naches Valley SD	60%	81%	76%	41%	62%
Nooksack SD	70%	70%	83%	67%	80%
North Franklin SD	78%	81%	71%	62%	75%
North Kitsap SD	74%	86%	76%	73%	83%
North Thurston PS	70%	81%	75%	67%	86%
Northshore SD	75%	77%	82%	66%	84%

Percentage of Students Making Gains in English Proficiency					
District	2006–07	2007–08	2008–09	2009–10	2010–11
Oak Harbor SD	58%	84%	81%	57%	81%
Okanogan SD	67%	92%	65%	64%	79%
Olympia SD	81%	84%	81%	77%	95%
Omak SD	67%	55%	69%	48%	82%
Orondo SD	58%	82%	89%	70%	70%
Othello SD	71%	77%	74%	68%	81%
Pasco SD	65%	72%	72%	69%	75%
Prescott SD	65%	86%	75%	84%	76%
Prosser SD	67%	80%	73%	68%	74%
Puyallup SD	76%	81%	85%	80%	79%
Quillayute Valley SD	68%	81%	81%	74%	77%
Quincy SD	65%	80%	73%	55%	74%
Raymond SD	58%	76%	76%	72%	88%
Renton SD	73%	82%	82%	73%	79%
Richland SD	71%	78%	75%	68%	81%
Ridgefield SD	71%	86%	91%	63%	81%
Riverview SD	76%	95%	95%	89%	95%
Rochester SD	77%	79%	67%	65%	58%
Royal SD	66%	58%	77%	62%	75%
Seattle PS	66%	77%	73%	68%	78%
Sedro-Woolley SD	67%	58%	68%	68%	84%
Selah SD	51%	70%	66%	52%	85%
Shelton SD	66%	82%	86%	74%	86%
Shoreline SD	74%	84%	85%	73%	81%
Snohomish SD	82%	79%	79%	69%	82%
Soap Lake SD	78%	73%	71%	53%	72%
South Bend SD	62%	82%	59%	63%	61%
Spokane SD	76%	82%	82%	72%	81%
Stanwood SD	54%	86%	65%	67%	83%
Sultan SD	46%	52%	85%	76%	81%
Sumner SD	73%	71%	75%	61%	76%
Sunnyside SD	56%	71%	69%	61%	74%
Tacoma SD	69%	78%	80%	66%	83%
Tahoma SD	60%	70%	90%	68%	81%
Tonasket SD	76%	74%	71%	44%	85%
Toppenish SD	48%	67%	65%	55%	77%
Tukwila SD	67%	79%	81%	70%	82%
Tumwater SD	81%	88%	82%	65%	89%
Union Gap SD	77%	79%	79%	63%	74%
University Place SD	71%	95%	73%	72%	79%

Percentage of Students Making Gains in English Proficiency					
District	2006-07	2007-08	2008-09	2009-10	2010-11
Vancouver SD	76%	82%	83%	71%	82%
Wahluke SD	68%	73%	74%	68%	79%
Walla Walla SD	71%	65%	75%	67%	82%
Wapato SD	51%	71%	67%	39%	62%
Warden SD	61%	67%	68%	40%	77%
Washougal SD	88%	77%	66%	71%	77%
Wenatchee SD	64%	75%	73%	64%	77%
West Valley (Spk) SD	71%	67%	72%	70%	94%
White Salmon Valley SD	75%	70%	69%	70%	67%
Winlock SD	71%	81%	65%	68%	83%
Woodland SD	86%	81%	70%	88%	88%
Yakima SD	63%	69%	70%	61%	71%
Zillah SD	55%	77%	63%	61%	88%

Excludes districts with less than 30 matched students in any year.

Table E-2: Percentage Achieving Proficiency

Percentage of Students Achieving English Proficiency					
District	2006–07	2007–08	2008–09	2009–10	2010–11
Aberdeen SD	7.1%	15.0%	16.8%	20.4%	18.4%
Anacortes SD	3.1%	18.8%	19.2%	8.0%	19.0%
Arlington SD	14.5%	18.7%	17.7%	10.7%	16.9%
Auburn SD	13.5%	17.0%	18.7%	13.8%	21.4%
Battle Ground SD	16.9%	18.1%	21.6%	19.8%	25.0%
Bellevue SD	23.1%	30.2%	30.1%	28.7%	35.2%
Bellingham SD	10.0%	12.6%	14.2%	11.9%	18.8%
Bethel SD	11.0%	14.8%	16.5%	14.0%	23.7%
Blaine SD	9.2%	21.1%	16.7%	12.4%	28.7%
Bremerton SD	15.3%	22.2%	21.3%	23.2%	23.2%
Brewster SD	10.3%	18.4%	16.4%	6.5%	13.9%
Bridgeport SD	49.2%	15.8%	21.3%	11.0%	18.8%
Burlington SD	11.8%	13.8%	13.3%	8.1%	11.2%
Camas SD	30.1%	31.5%	30.7%	31.3%	30.2%
Cascade SD	15.6%	17.3%	15.9%	8.5%	18.7%
Cashmere SD	26.0%	15.3%	9.1%	18.4%	20.1%
Central Kitsap SD	24.0%	24.2%	26.3%	19.3%	25.1%
Central Valley SD	17.5%	16.5%	16.7%	16.7%	20.2%
Centralia SD	12.4%	13.5%	9.0%	6.0%	16.9%
Chehalis SD	14.1%	20.3%	13.9%	8.7%	24.1%
Cheney SD	22.2%	21.2%	22.8%	35.7%	25.3%
Clover Park SD	11.7%	19.5%	20.9%	15.1%	22.4%
College Place SD	6.8%	9.9%	16.8%	9.3%	15.5%
Columbia (Walla) SD	7.2%	12.5%	6.9%	0.0%	11.4%
Colville SD	10.6%	6.7%	36.4%	9.6%	25.4%
East Valley (Spk) SD	12.1%	19.5%	30.8%	16.1%	39.4%
East Valley (Yak) SD	15.8%	23.7%	26.2%	11.3%	18.8%
Eastmont SD	12.7%	15.4%	17.1%	9.7%	20.0%
Edmonds SD	16.9%	18.3%	18.7%	18.9%	25.8%
Ellensburg SD	17.0%	15.7%	12.7%	13.4%	20.2%

Percentage of Students Achieving English Proficiency					
District	2006–07	2007–08	2008–09	2009–10	2010–11
Elma SD	13.7%	10.6%	11.0%	11.9%	15.8%
Entiat SD	41.2%	16.2%	9.5%	2.3%	25.5%
Enumclaw SD	15.3%	15.3%	10.8%	9.2%	21.4%
Ephrata SD	14.9%	20.2%	12.8%	8.2%	21.6%
Everett SD	16.4%	18.7%	19.3%	20.5%	22.2%
Evergreen (Clark) SD	14.2%	20.4%	21.6%	14.4%	24.1%
Federal Way SD	17.0%	22.7%	19.0%	15.4%	25.5%
Ferndale SD	21.5%	23.4%	26.7%	20.3%	30.2%
Fife SD	13.3%	21.6%	17.5%	9.6%	19.5%
Finley SD	15.1%	14.6%	14.7%	18.3%	21.1%
Franklin Pierce SD	9.9%	10.4%	17.5%	15.7%	25.9%
Grandview SD	9.5%	18.8%	13.0%	6.3%	22.0%
Granger SD	6.7%	11.1%	14.4%	11.3%	13.0%
Highland SD	31.1%	23.1%	23.3%	15.4%	22.7%
Highline SD	12.3%	15.7%	17.1%	16.2%	17.4%
Hoquiam SD	20.0%	33.9%	20.5%	23.3%	21.1%
Issaquah SD	27.7%	29.8%	32.5%	26.8%	34.5%
Kelso SD	11.3%	18.0%	18.2%	12.3%	28.1%
Kennewick SD	8.4%	14.6%	15.1%	9.2%	17.7%
Kent SD	12.3%	17.0%	18.5%	12.0%	19.3%
Kiona-Benton SD	15.5%	19.0%	15.3%	6.8%	13.9%
Kittitas SD	12.8%	15.2%	25.0%	29.5%	8.9%
Lake Chelan SD	12.0%	17.4%	11.1%	5.2%	25.3%
Lake Quinault SD	15.6%	23.5%	7.0%	2.7%	8.3%
Lake Stevens SD	15.3%	16.2%	14.0%	16.2%	19.2%
Lake Washington SD	23.0%	28.0%	35.9%	33.8%	34.8%
Lakewood SD	10.0%	18.1%	18.6%	14.5%	25.4%
Longview SD	11.5%	17.0%	16.5%	11.0%	14.3%
Lynden SD	15.3%	13.2%	12.9%	10.3%	17.1%
Mabton SD	14.0%	17.8%	13.9%	6.9%	8.2%
Manson SD	15.2%	15.1%	13.0%	11.2%	22.6%
Marysville SD	12.6%	15.3%	14.4%	10.4%	20.5%
Mead SD	17.4%	19.2%	16.7%	11.3%	24.2%
Mercer Island SD	23.5%	34.8%	47.2%	41.2%	55.4%
Meridian SD	17.7%	21.6%	20.9%	16.3%	23.2%
Monroe SD	9.9%	13.4%	16.7%	9.8%	18.3%
Moses Lake SD	21.4%	23.0%	21.9%	14.0%	25.6%
Mount Adams SD	5.1%	13.4%	8.2%	4.7%	6.9%
Mount Baker SD	14.8%	13.8%	22.2%	11.5%	21.5%
Mount Vernon SD	12.5%	14.9%	13.6%	8.5%	17.3%

Percentage of Students Achieving English Proficiency					
District	2006–07	2007–08	2008–09	2009–10	2010–11
Mukilteo SD	14.8%	18.5%	21.3%	18.1%	25.7%
Naches Valley SD	13.2%	21.5%	15.4%	1.7%	15.7%
Nooksack SD	12.6%	15.2%	16.1%	9.9%	20.6%
North Franklin SD	14.1%	15.6%	15.4%	8.5%	19.7%
North Kitsap SD	16.8%	18.3%	18.5%	11.3%	24.7%
North Mason SD	10.3%	8.3%	14.3%	11.0%	16.8%
North Thurston PS	6.1%	19.8%	15.5%	11.9%	20.7%
Northshore SD	19.6%	22.8%	21.2%	21.9%	26.5%
Oak Harbor SD	9.6%	25.6%	31.5%	9.6%	18.9%
Okanogan SD	7.6%	26.2%	7.2%	9.0%	14.3%
Olympia SD	16.8%	18.2%	18.0%	17.3%	35.9%
Omak SD	10.0%	17.8%	23.4%	4.3%	16.3%
Orondo SD	10.8%	15.3%	9.0%	8.7%	18.1%
Oroville SD	12.3%	28.6%	20.3%	8.6%	8.8%
Orting SD	5.9%	29.0%	32.3%	0.0%	21.1%
Othello SD	13.1%	15.9%	14.2%	9.3%	15.9%
Pasco SD	9.1%	12.1%	10.7%	7.0%	12.5%
Peninsula SD	19.7%	30.0%	35.9%	26.5%	9.8%
Prescott SD	9.2%	27.6%	31.6%	27.8%	40.7%
Prosser SD	9.3%	16.9%	13.5%	11.9%	18.0%
Pullman SD	22.4%	26.4%	31.1%	32.4%	27.8%
Puyallup SD	10.4%	17.7%	23.4%	20.2%	21.4%
Quillayute Valley SD	8.4%	7.4%	14.3%	7.5%	13.3%
Quincy SD	14.6%	19.7%	19.0%	9.7%	20.7%
Raymond SD	8.7%	12.1%	18.8%	13.8%	21.8%
Renton SD	15.5%	21.0%	22.0%	17.9%	21.7%
Richland SD	18.0%	20.3%	23.0%	14.3%	23.1%
Ridgefield SD	10.7%	14.9%	22.9%	15.6%	12.5%
Riverview SD	31.7%	40.0%	31.7%	21.6%	41.5%
Rochester SD	14.5%	22.6%	19.6%	21.2%	16.0%
Royal SD	13.1%	14.8%	15.2%	8.1%	15.8%
San Juan IsSD	6.7%	16.1%	9.7%	10.0%	18.8%
Seattle PS	13.5%	16.6%	17.2%	13.8%	22.6%
Sedro-Woolley SD	9.7%	10.7%	15.1%	18.0%	26.7%
Selah SD	10.0%	14.9%	10.1%	5.0%	24.0%
Shelton SD	10.4%	17.7%	16.8%	12.1%	17.8%
Shoreline SD	21.4%	23.4%	28.4%	19.6%	25.0%
Snohomish SD	15.3%	18.2%	20.0%	15.3%	23.1%
Snoqualmie Valley SD	3.4%	16.4%	28.3%	24.5%	21.5%
Soap Lake SD	16.4%	26.8%	22.1%	14.3%	29.5%

Percentage of Students Achieving English Proficiency					
District	2006–07	2007–08	2008–09	2009–10	2010–11
South Bend SD	3.4%	18.1%	15.7%	16.7%	14.9%
South Kitsap SD	8.5%	20.0%	21.5%	17.1%	21.2%
Spokane SD	12.8%	15.2%	15.3%	12.3%	16.5%
Stanwood SD	7.1%	21.7%	14.1%	1.2%	13.6%
Steilacoom Hist. SD	21.6%	28.1%	27.2%	19.5%	32.4%
Sultan SD	10.5%	10.8%	15.1%	12.9%	16.2%
Sumner SD	11.6%	11.7%	13.1%	4.4%	17.7%
Sunnyside SD	12.9%	17.8%	15.9%	10.6%	17.8%
Tacoma SD	11.2%	16.5%	17.9%	12.4%	19.8%
Tahoma SD	17.2%	15.2%	27.5%	13.7%	25.0%
Tonasket SD	7.4%	18.8%	7.7%	2.7%	14.8%
Toppenish SD	10.4%	12.4%	10.6%	8.1%	15.3%
Tukwila SD	13.1%	12.0%	18.4%	10.1%	15.9%
Tumwater SD	6.9%	18.4%	23.4%	21.2%	26.1%
Union Gap SD	22.4%	27.2%	19.3%	9.3%	16.3%
University Place SD	14.0%	31.7%	24.0%	20.6%	26.9%
Vancouver SD	9.8%	16.4%	18.2%	10.9%	18.2%
Wahluke SD	8.8%	9.0%	9.0%	7.9%	16.4%
Walla Walla SD	8.7%	7.7%	12.2%	9.6%	19.8%
Wapato SD	6.5%	13.4%	13.7%	5.0%	7.5%
Warden SD	17.6%	15.8%	15.1%	4.4%	16.3%
Washougal SD	19.4%	24.1%	20.5%	12.5%	29.5%
Wenatchee SD	10.4%	14.9%	14.4%	8.2%	19.4%
West Valley (Spk) SD	13.4%	18.7%	13.5%	8.0%	30.3%
White River SD	19.4%	13.9%	17.6%	9.4%	12.8%
White Salmon Valley SD	10.8%	6.7%	8.0%	8.5%	11.9%
Winlock SD	17.6%	20.0%	7.0%	13.1%	19.0%
Woodland SD	17.3%	8.7%	12.0%	18.3%	17.9%
Yakima SD	15.4%	16.9%	16.0%	9.2%	17.0%
Yelm SD	14.7%	32.7%	19.1%	10.2%	32.1%
Zillah SD	11.9%	21.2%	16.2%	11.9%	31.3%

Excludes districts with less than 30 matched students in any year.

Appendix F

Length of Stay: Placement Level of English Proficiency by District

This appendix presents distribution of ELL students receiving TBIP services during the 2010–11 school year (excluding waivers) by their initial placement level and the number of years in program as of the end of the school year. The *years* categories include students whose length of stay up to, but not including the upper category range (1–2 years includes student who were in TBIP one year to 1.99 years, 2–3 years includes two years to 2.99 years, and so on). This appendix excludes students whose parents waived TBIP services.

Districts	Less Than 1 year			1–2 years			2–3 years			3–4 years			4–5 years			More than 5 Years		
	Levels			Levels			Levels			Levels			Levels			Levels		
	1	2	3	1	2	3	1	2	3	1	2	3	1	2	3	1	2	3
Aberdeen	7	25	31	12	31	26	2	16	1	9	11	1	16	1	2	29	22	4
Anacortes	2	4	1	5	10	3	1	1	1	3	0	0	8	1	1	3	2	0
Arlington	2	22	3	15	37	7	6	14	3	11	8	0	13	0	0	14	4	0
Auburn	138	218	44	259	349	57	81	100	16	93	64	14	102	6	8	140	75	21
Bainbridge Island	2	5	0	5	10	1	1	1	0	4	2	0	0	0	0	2	1	0
Battle Ground	20	79	30	81	123	33	35	38	8	24	32	6	35	2	6	51	27	5
Bellevue	226	269	139	332	273	67	117	65	12	81	19	9	57	4	6	37	13	4
Bellingham	46	75	23	85	109	21	43	26	2	31	20	1	28	4	1	53	13	14
Bethel	21	34	15	49	63	17	19	18	2	12	10	2	14	4	1	16	8	8
Blaine	6	7	3	14	13	3	6	7	0	5	4	0	2	1	0	9	10	1
Bremerton	17	15	8	17	24	11	5	6	1	3	5	1	3	2	0	6	4	3
Brewster	40	27	7	110	14	9	41	3	1	23	11	0	19	1	0	37	30	9
Bridgeport	23	21	5	34	42	12	30	14	3	9	13	0	25	1	1	31	17	8
Burlington	58	58	11	95	80	16	27	18	4	47	19	0	35	7	1	72	28	20
Camas	6	18	11	13	20	5	2	8	1	2	4	0	3	0	0	7	0	0
Cascade	12	11	1	39	29	1	14	8	0	9	4	2	1	0	0	14	13	1
Cashmere	28	8	0	44	27	8	6	13	0	7	8	2	14	3	1	7	7	10
Castle Rock	2	3	0	1	5	0	2	7	3	0	0	0	1	0	0	2	1	0
Central Kitsap	11	51	27	19	62	18	6	19	3	7	11	1	2	3	2	8	4	3
Central Valley	10	41	14	42	49	18	7	12	3	5	10	3	10	1	1	16	8	0
Centralia	51	24	3	57	41	8	18	17	4	16	17	0	21	3	5	24	7	1
Chehalis	11	5	2	26	1	3	8	2	1	2	6	0	1	0	0	3	8	1

Districts	Less Than 1 year			1-2 years			2-3 years			3-4years			4-5 years			More than 5 Years		
	Levels			Levels			Levels			Levels			Levels			Levels		
	1	2	3	1	2	3	1	2	3	1	2	3	1	2	3	1	2	3
Cheney	3	15	4	7	20	5	2	4	0	2	1	0	4	0	0	1	1	0
Chewelah	0	1	0	1	0	0	0	0	0	0	0	1	0	0	0	0	0	0
Clarkston	0	1	2	4	4	1	0	1	0	4	1	1	1	0	0	0	0	0
Cle Elum-Roslyn	3	2	0	6	0	1	1	2	1	0	0	0	0	0	0	0	1	1
Clover Park	75	183	96	158	228	78	54	70	14	30	46	10	66	9	11	64	21	18
Chimacum	1	0	3	1	4	0	1	1	0	0	0	0	1	1	0	0	0	0
College Place	30	1	4	49	13	7	14	4	1	11	3	1	8	1	1	8	3	1
Columbia (Walla)	3	4	6	11	12	4	6	2	1	4	4	0	8	0	1	8	6	4
Colville	1	7	0	22	9	1	1	0	2	0	6	2	2	0	0	4	2	0
Conway	3	3	0	4	1	1	1	0	0	2	1	0	3	0	0	6	0	2
Coupeville	6	2	2	6	2	2	5	0	0	1	0	0	1	0	0	2	0	0
Deer Park	2	1	0	0	1	0	0	0	0	0	0	0	0	0	0	0	0	0
Dieringer	0	1	1	1	6	1	0	1	0	3	3	0	0	0	0	0	0	0
East Valley (Spk)	24	19	21	15	26	9	6	8	8	3	5	0	4	2	1	11	8	2
East Valley (Yak)	6	38	18	14	70	12	8	21	1	7	15	3	14	1	1	17	7	3
Eastmont	67	98	21	140	123	42	42	62	10	34	38	5	57	7	2	103	40	29
Eatonville	1	0	0	3	2	1	0	0	0	0	0	0	0	0	0	1	0	0
Edmonds	129	341	117	223	457	97	96	129	12	85	87	10	90	18	15	111	32	22
Ellensburg	15	24	11	9	47	6	14	13	3	5	14	4	9	1	2	16	5	6
Elma	9	6	3	14	22	3	13	6	0	2	4	0	6	1	0	3	1	0
Entiat	1	6	1	9	11	2	0	0	0	4	0	0	6	0	1	4	0	0
Enumclaw	10	17	3	18	30	3	9	12	4	5	7	2	7	3	3	24	3	0
Ephrata	13	25	1	31	31	3	4	9	3	15	2	0	7	3	0	25	9	3
Everett	110	261	71	229	395	54	112	88	4	81	72	9	88	12	7	87	23	18
Evergreen (Clark)	136	299	105	277	394	82	135	128	13	68	86	10	118	5	14	138	56	22
Federal Way	257	393	100	474	618	122	168	186	34	143	92	14	125	19	11	155	62	29
Ferndale	13	33	2	36	69	2	14	8	0	9	10	2	13	2	1	16	5	1
Fife	9	48	21	12	69	27	11	19	9	7	21	3	15	8	2	22	11	9
Finley	5	13	8	19	19	7	4	2	0	4	11	2	7	2	1	13	4	2
Franklin Pierce	35	72	36	74	101	29	36	23	3	27	29	5	22	4	5	33	13	10
Goldendale	0	0	2	1	6	2	0	5	0	0	3	0	1	0	0	4	1	1
Grandview	102	71	16	219	152	22	74	55	7	48	28	10	73	12	6	102	105	15
Granger	30	50	11	47	82	15	2	9	6	31	47	9	32	1	5	54	51	25
Granite Falls	1	4	0	0	3	2	0	4	1	1	1	0	0	0	1	5	0	1

Districts	Less Than 1 year			1–2 years			2–3 years			3–4years			4–5 years			More than 5 Years		
	Levels			Levels			Levels			Levels			Levels			Levels		
	1	2	3	1	2	3	1	2	3	1	2	3	1	2	3	1	2	3
Highland	21	47	6	36	60	11	11	17	2	9	12	1	6	2	1	5	10	2
Highline	372	445	119	581	596	112	196	192	20	170	142	21	227	31	23	206	185	63
Hockinson	2	0	0	5	5	1	3	2	0	0	0	0	3	0	0	1	0	0
Hoquiam	2	10	3	4	9	2	1	0	0	0	0	2	1	0	0	3	0	0
Issaquah	26	144	98	36	162	49	20	38	5	17	28	2	23	5	7	30	11	7
Kelso	11	23	3	18	41	3	5	12	3	10	11	1	6	2	1	17	11	0
Kennewick	209	196	79	311	271	104	54	34	10	146	69	12	115	10	9	144	50	54
Kent	402	540	154	582	906	122	240	296	27	164	176	21	231	27	26	296	114	73
Kiona Benton	9	21	10	12	44	14	6	7	5	5	12	0	11	3	1	9	18	13
Kittitas	8	5	0	1	12	0	4	6	0	2	1	0	4	0	0	3	3	0
La Conner	0	3	1	0	2	1	0	0	0	0	0	0	0	0	0	0	0	0
Lacenter	0	1	1	2	6	0	0	0	0	1	1	0	1	0	0	2	1	0
Lake Chelan	20	13	1	57	52	11	17	16	2	15	12	1	23	2	0	25	12	6
Lake Quinault	0	2	1	1	8	0	0	0	0	0	0	0	0	2	0	2	1	0
Lake Stevens	16	39	8	32	60	8	13	9	1	7	10	2	9	2	0	17	9	2
Lake Washington	134	352	135	177	273	67	68	43	6	40	46	6	41	1	2	43	10	16
Lakewood	2	11	3	9	15	6	3	0	0	3	3	1	6	0	1	5	2	0
Lind	2	0	2	1	5	1	0	0	0	0	2	0	0	0	0	3	1	1
Longview	17	55	9	31	66	13	14	28	4	14	20	7	18	4	4	17	19	4
Lopez Island	1	1	0	1	2	0	0	1	0	0	0	0	0	0	0	0	1	0
Lynden	12	29	8	15	53	13	11	11	5	7	15	1	8	1	1	28	6	9
Mabton	12	37	20	15	58	30	20	28	10	13	19	3	12	5	1	44	40	9
Manson	14	17	6	23	32	6	5	13	4	10	12	5	15	1	1	15	8	6
Marysville	21	83	17	56	151	31	36	44	9	32	34	5	19	3	4	53	24	17
Mead	12	14	8	19	25	11	14	12	1	2	7	1	7	1	3	9	1	1
Medical Lake	0	0	3	0	2	1	0	0	0	0	1	0	0	0	0	0	0	1
Mercer Island	9	22	20	12	15	8	1	0	1	0	0	0	0	0	0	0	0	0
Meridian	13	5	2	20	6	15	9	8	1	6	4	0	15	0	0	9	3	2
Methow Valley	1	1	0	0	2	0	1	0	0	0	0	0	0	0	1	0	0	1
Monroe	34	61	2	68	82	14	34	30	0	26	20	5	29	2	2	16	10	12
Montesano	0	3	0	4	2	2	0	2	0	2	1	2	1	0	0	55	19	11
Moses Lake	38	98	43	56	139	60	20	39	7	13	35	8	26	2	1	2	1	0
Mossyrock	11	2	0	5	5	1	1	0	0	7	2	0	1	0	0	10	17	0
Mount Adams	11	12	2	23	18	1	5	11	0	4	6	0	9	0	1	11	26	0

Districts	Less Than 1 year			1–2 years			2–3 years			3–4years			4–5 years			More than 5 Years		
	Levels			Levels			Levels			Levels			Levels			Levels		
	1	2	3	1	2	3	1	2	3	1	2	3	1	2	3	1	2	3
Mount Baker	5	15	1	11	18	3	4	6	0	7	9	1	10	3	0	166	76	52
Mount Vernon	99	159	36	159	249	74	114	78	7	100	44	5	66	4	11	127	31	14
Mukilteo	183	373	90	309	505	85	89	109	18	106	72	12	90	13	8	9	3	0
Naches Valley	2	8	7	3	12	6	0	6	2	1	5	1	7	0	0	0	1	0
Naselle Grays	0	0	0	0	0	0	2	1	0	0	0	0	0	0	0	0	0	0
Nooksack Valley	12	17	0	20	44	3	8	8	0	10	7	1	5	2	0	19	13	0
North Franklin	65	62	23	95	86	25	42	27	9	40	8	2	40	4	2	110	31	24
North Kitsap	9	21	15	18	34	3	5	14	1	4	6	3	8	5	1	21	8	5
North Mason	0	2	20	13	17	4	2	3	0	4	7	0	7	0	0	8	3	5
North Thurston	32	90	30	67	118	27	18	21	4	18	18	3	29	2	1	32	14	5
Northshore	58	160	38	98	197	41	38	56	5	20	49	3	49	8	5	50	31	1
Oak Harbor	6	16	10	5	13	5	4	9	0	0	11	2	3	1	0	3	3	2
Ocean Beach	0	4	5	3	0	1	7	0	0	1	0	0	1	1	2	2	2	0
Ocosta	7	8	0	1	11	1	0	1	0	5	1	0	2	1	1	1	0	1
Okanogan	8	8	1	20	12	5	7	2	1	4	2	0	5	0	0	6	2	4
Olympia	11	40	14	36	49	8	4	1	0	11	5	1	5	1	0	6	2	3
Omak	6	4	4	8	8	5	2	4	2	1	1	0	2	0	0	11	1	1
Onalaska	1	1	1	4	1	7	0	2	1	0	0	0	0	0	0	3	1	0
Orcas Island	3	0	1	0	5	1	2	0	0	0	0	0	0	1	0	0	1	0
Orondo	17	3	1	37	2	0	9	5	0	6	1	0	9	0	1	10	1	0
Oroville	7	8	4	6	22	2	1	3	6	1	6	0	0	1	0	8	4	0
Orting	2	3	2	4	6	0	5	0	0	0	0	0	0	0	0	3	1	2
Othello	129	119	20	230	152	14	103	48	8	64	51	6	108	11	10	182	25	31
Palisades	0	4	0	3	2	0	1	0	0	1	0	0	3	0	0	0	0	0
Pasco	385	344	139	867	537	154	239	133	44	403	263	48	344	45	32	575	252	107
Pateros	4	4	6	1	5	1	3	0	2	3	0	0	0	0	0	4	0	0
Paterson	2	2	0	3	6	1	1	2	0	5	0	0	2	0	0	5	1	0
Peninsula	4	12	0	10	9	3	2	1	0	2	1	0	4	0	0	0	1	0
Pomeroy	0	0	0	0	1	0	0	1	0	0	0	0	0	0	0	0	0	0
Port Angeles	2	5	0	3	14	1	2	4	1	1	3	0	0	0	0	1	0	1
Prescott	0	8	4	0	3	3	1	3	0	5	1	0	2	0	1	8	9	0
Prosser	45	43	9	80	80	17	39	34	3	29	24	2	45	5	5	58	24	3
Pullman	11	23	11	7	12	3	6	2	0	2	0	0	4	0	0	3	0	0
Puyallup	27	107	42	62	149	41	29	51	8	19	29	6	31	4	2	30	10	9

Districts	Less Than 1 year			1–2 years			2–3 years			3–4years			4–5 years			More than 5 Years		
	Levels			Levels			Levels			Levels			Levels			Levels		
	1	2	3	1	2	3	1	2	3	1	2	3	1	2	3	1	2	3
Quillayute Valley	7	8	0	21	10	1	10	2	0	10	1	0	4	1	4	11	11	2
Quincy	88	64	20	168	105	21	73	34	8	38	29	2	54	2	3	123	26	25
Raymond	8	3	0	9	6	3	11	0	0	1	2	1	4	0	0	1	12	0
Reardan-Edwall	0	6	15	1	1	0	0	0	0	0	0	0	0	0	0	1	2	0
Renton	150	339	63	314	441	71	99	86	20	68	85	12	91	13	4	83	32	11
Richland	8	37	18	18	53	18	17	23	3	15	12	2	9	1	1	22	4	7
Ridgefield	9	8	5	10	16	0	6	2	1	1	2	0	4	1	0	5	0	0
Riverside	0	1	1	1	4	2	0	0	0	0	1	0	1	0	0	0	1	0
Riverview	12	4	0	17	11	0	7	1	0	1	1	1	4	2	1	9	1	3
Rochester	3	16	1	13	29	3	1	5	1	0	6	1	1	0	0	0	0	0
Roosevelt	0	4	1	2	3	0	0	0	0	0	0	0	0	0	0	0	0	0
Royal	45	45	9	147	48	17	32	34	2	41	14	2	44	2	1	63	7	6
San Juan	11	3	3	7	7	2	5	0	0	2	0	0	4	0	0	3	0	1
Seattle	482	939	214	915	1213	153	411	353	35	276	173	16	278	51	19	457	376	57
Sedro-Woolley	10	23	4	13	37	4	6	17	6	7	10	2	6	1	1	24	17	6
Selah	4	24	7	11	49	14	11	12	2	4	12	4	14	1	2	27	18	4
Sequim	4	5	2	2	9	3	1	1	1	1	3	0	2	0	1	2	0	1
Shelton	27	42	3	66	43	4	13	7	0	25	24	3	14	0	0	25	8	6
Shoreline	53	109	33	86	128	28	34	31	2	31	22	1	24	3	2	19	8	6
Snohomish	27	37	9	27	64	12	14	25	3	12	8	0	14	0	0	14	6	5
Snoqualmie Valley	7	19	7	6	24	9	3	5	0	2	4	1	4	1	0	3	0	0
Soap Lake	1	11	0	4	17	9	5	6	5	6	3	1	0	0	1	8	6	1
South Bend	11	11	6	7	6	0	2	5	0	0	2	0	5	1	0	13	4	0
South Kitsap	5	11	2	11	26	10	3	1	0	4	2	0	5	1	0	3	2	1
South Whidbey	0	2	1	3	0	3	1	1	0	0	0	0	1	1	0	0	0	0
Spokane	141	149	43	274	215	41	96	46	8	62	48	5	54	5	4	105	36	2
Stanwood-Camano	5	10	0	20	8	2	2	2	0	1	4	1	1	0	0	2	5	6
Steilacoom	3	12	12	0	24	11	0	4	2	0	0	3	1	2	2	1	0	0
Stevenson-Carson	0	5	5	0	7	0	0	1	0	2	2	0	2	0	0	2	1	0
Sultan	6	18	1	13	26	2	4	5	0	7	3	1	4	3	1	16	9	3
Sumner	19	26	2	30	41	5	17	16	5	4	11	0	12	2	0	23	10	6
Sunnyside	148	233	42	208	323	42	104	121	21	68	103	18	102	14	9	177	139	19
Tacoma	170	288	82	385	384	124	131	108	23	80	74	9	88	26	13	104	47	35
Tahoma	4	15	4	14	27	2	4	6	2	5	9	1	4	2	0	8	1	0

Districts	Less Than 1 year			1–2 years			2–3 years			3–4years			4–5 years			More than 5 Years		
	Levels			Levels			Levels			Levels			Levels			Levels		
	1	2	3	1	2	3	1	2	3	1	2	3	1	2	3	1	2	3
Tenino	0	4	0	0	4	0	0	2	0	1	2	0	0	0	0	1	0	1
Toledo	5	0	0	4	1	0	0	0	1	0	3	0	1	1	0	2	0	0
Tonasket	2	21	9	11	38	9	5	9	0	1	10	2	3	0	0	7	2	3
Toppenish	60	120	22	149	192	36	53	72	7	44	45	9	49	9	10	112	126	14
Touchet	4	4	1	4	4	0	0	0	0	0	0	0	2	1	0	3	1	1
Tukwila	90	162	29	207	223	33	43	44	6	44	23	5	41	5	1	38	52	4
Tumwater	11	13	7	11	22	4	2	1	0	4	8	0	3	0	1	5	0	0
Union Gap	10	15	6	25	38	6	5	9	4	4	2	0	2	1	1	8	5	2
University Place	22	24	10	21	35	9	11	4	1	4	7	1	2	0	0	6	0	0
Vancouver	190	245	107	327	373	85	151	100	7	97	64	10	83	21	19	120	37	38
Vashon Island	1	4	3	1	8	0	1	3	1	0	1	0	1	0	1	0	3	0
Wahkiakum	3	0	2	4	3	2	0	0	0	4	2	0	1	0	0	2	0	0
Wahluke	146	65	8	225	126	15	98	22	5	101	22	2	100	1	1	189	79	24
Walla Walla	73	59	14	111	98	23	56	47	7	31	22	1	49	9	7	95	76	13
Wapato	14	97	8	43	160	32	26	58	8	15	54	10	50	5	2	122	42	33
Warden	17	31	16	12	63	31	10	20	6	5	20	1	18	6	5	37	13	17
Washougal	3	14	0	1	11	6	1	3	1	0	3	0	4	0	1	4	2	1
Waterville	0	1	0	2	0	0	1	0	0	0	2	1	0	0	0	4	0	1
Wenatchee	132	130	25	208	243	51	130	67	9	100	58	6	97	13	7	136	89	20
West Valley (Spk)	4	15	5	12	21	3	5	6	0	2	8	0	6	1	0	13	7	1
West Valley (Yak)	16	37	45	22	20	4	3	4	0	4	4	1	2	0	1	18	3	3
White River	4	10	1	7	4	1	1	2	1	2	0	0	2	0	0	4	0	0
White Salmon	19	10	3	30	25	1	18	11	1	10	8	0	17	1	0	16	21	0
Winlock	5	3	3	5	9	2	2	7	2	4	1	1	0	0	0	3	10	1
Woodland	14	19	12	12	28	0	9	13	0	4	8	0	4	0	0	3	1	1
Yakima	231	425	114	389	803	174	154	256	41	151	196	48	164	19	23	448	167	198
Yelm	2	17	5	6	12	3	5	3	2	5	2	0	2	0	1	3	2	0
Zillah	6	11	0	21	29	10	2	9	4	2	10	2	7	1	1	13	18	1

For more information about the contents
of this document, please contact:
Helen Malagon, OSPI
E-mail: helen.malagon@k12.wa.us
Phone: (360) 725-6147

Download this material in PDF at <http://www.k12.wa.us/LegisGov>
or use a smartphone to scan this QR code for instant download.



This material is available in alternative format upon request.
Contact the Resource Center at (888) 595-3276, TTY (360) 664-3631.
Please refer to the document number below for quicker service:
11-0036



Office of Superintendent of Public Instruction
Old Capitol Building
P.O. Box 47200
Olympia, WA 98504-7200