



**Washington State  
Department of Transportation**

# **REGIONAL MOBILITY GRANT PROGRAM**

**1<sup>st</sup> Quarter 2012 Report to the Secretary**

**Public Transportation Division**

Brian Lagerberg, Public Transportation Director, 360-705-7878  
Mark Eldridge, Regional Mobility Grant Program Manager, 360-705-7273

Contact:

Washington State Department of Transportation  
Public Transportation Division  
Regional Mobility Grant Program  
Manager, Mark Eldridge  
310 Maple Park Avenue, POB 47387  
Olympia, WA 98504-7387  
Phone: (360) 705-7273  
E-mail: [eldridm@wsdot.wa.gov](mailto:eldridm@wsdot.wa.gov)

**Americans with Disabilities Act (ADA) Information**

Materials can be provided in alternative formats: large print, Braille, cassette tape, or on computer disk for people with disabilities by calling the Office of Equal Opportunity (OEO) at (360) 705-7097. Persons who are deaf or hard of hearing may contact OEO through the Washington Relay Service at 7-1-1.

**Title VI Notice to Public**

It is the Washington State Department of Transportation's (WSDOT) policy to assure that no person shall, on the grounds of race, color, national origin or sex, as provided by Title VI of the Civil Rights Act of 1964, be excluded from participation in, be denied the benefits of, or be otherwise discriminated against under any of its federally funded programs and activities. Any person, who believes his /her Title VI protection has been violated, may file a complaint with WSDOT's Office of Equal Opportunity (OEO). For Title VI complaint forms and advice, please contact OEO's Title VI Coordinator at (360) 705-7082 or (509) 324-6018.

## Regional Mobility Grant Program

The Regional Mobility Grant program delivers transit mobility projects that are cost-effective, reduce travel delay for people and goods, improve connectivity between counties and regional population centers, and are consistent with local and regional transportation and land use plans. Capital construction, equipment acquisition and operating projects are eligible. Projects are competitively evaluated and a ranked list is submitted to the Legislature for appropriation. The program is funded through the Multimodal Transportation Fund.

Each project has identified performance measures for the investment. Not all projects are represented in each of the performance measures listed below.

### Summary of benefits from the 34 completed or providing service projects from 2006 through March 31, 2012:

#### Project Results

- 14 park and ride lots constructed or expanded
- More than 4,700 new park and ride lot parking stalls built
- Six new or expanded transit centers
- Seven high occupancy vehicle and business access and transit lane projects
- 11 equipment and/or operating new or expanded transit service
- Four Transit Signal Prioritization (TSP) projects
- 42 new buses purchased

#### Performance Measures

- An estimated 183.6 million mile annual reduction in vehicle miles travelled
- An estimated 9.2 million annual reduction in vehicle trips
- Four projects saving over 1.2 million hours annually in travel delays
- An estimated 80.3 metric tons of CO2 reduced annually

### Projected benefits from the 22 in-progress projects:

- Five park and ride lots under construction or expansion with 1,525 new parking stalls
- Seven high occupancy vehicle and business access and transit lanes projects
- Six new or improved transit centers
- Two new or extended bus routes
- Five projects improving speed and reliability through transit signal prioritization

#### Performance Measures

- An estimated 70.4 million miles annual reduction in vehicle miles travelled
- An estimated 4.7 million annual reduction in vehicle trips
- One project reducing an estimated 34,300 hours in travel delays annually
- An estimated 30.8 metric tons of CO2 reduced annually

### Program News:

- All grantees are moving forward with their projects
- Site visits are being conducted on completed projects to verify grantee compliance with the scope of work
- Program changes for the 2013-2015 Call for New Projects have been made
- The program's next Call for New Projects is scheduled to begin July 30, 2012
- The program will undergo the Grants Program Advisory Committee review in May 2012

## Funded Project Status

In 2006, the Washington State Legislature adopted a list of 14 projects

- 13 projects are complete
- One project was cancelled

In 2007, the Legislature adopted a list of 16 new projects

- 12 projects are complete
- Three projects were cancelled
- One project is still under construction (GCA 6114) In-progress projects are listed on page 4

In 2009, the Legislature adopted a list of 14 new projects

- Seven projects are complete (GCA 6121, 6124, 6126, 6127, 6128, 6129, 6131)
- Two projects are providing new service today (GCA 6119, 6120)
- One project was cancelled
- Four projects are under construction (GCA 6122, 6123, 6125, 6130) In-progress projects are listed on page 4

In 2010, the Legislature appropriated \$10,596,768 (ESSB 6381SL) to fund the following three contingency list projects:

- City of Seattle, Rainier /Jackson Transit Priority Corridor Improvements (GCA 6507) In-process
- City of Bothell, SR 522 West City Limits to NE 180<sup>th</sup> Stage 2A (91<sup>st</sup> Ave. NE to West of 96<sup>th</sup> Ave NE) (GCA 6509) In-process
- Sound Transit, Sound Transit Express Bus Expansion – Snohomish to King County (GCA 6508) Complete

Projects funded with existing program resources and new appropriations:

- King County Metro, Southeast King County Connectors project in-process (GCA 6395/6)
- King County Metro, Route 120 project in-progress (GCA 6648)

In 2011, the Legislature adopted a list of 11 new projects. One additional project was funded from the Contingency List:

- All 12 projects are under construction (GCA 6755, 6756, 6757, 6758, 6759, 6760, 6761, 6762, 6763, 6764, 6765, 6877)



Intercity Transit, Hawks Prairie Park and Ride under construction

## Completed projects for the period 2006 through March 31, 2012

Biennium Cycle	Lead Agency Project Title	State Funded Amount	Total Project Cost
05-07	<b>Ben Franklin Transit (GCA 4936)</b> Columbia Park Trail Park and Ride Lot Expansion	\$300,000	\$942,936
05-07	<b>City of Federal Way (GCA 4928)</b> Pac Hwy So HOV Lanes Phase III, South 284th St. to Dash Point Rd	\$1,214,000	\$18,757,000
05-07	<b>City of Lakewood (GCA 4929)</b> Lakewood Commuter Rail Station	\$2,700,000	\$42,360,000
05-07	<b>City of West Richland (GCA 4930)</b> West Richland Transit Center Park and Ride Expansion	\$134,100	\$164,000
05-07	<b>Clark County and C-Tran (GCA 4931)</b> 99th Street Park and Ride Implementation	\$600,000	\$13,200,000
05-07	<b>Community Transit (GCA 4944)</b> I-5 Commuter Bus Expansion Project	\$2,912,000	\$4,160,000
05-07	<b>Community Transit (GCA 4932)</b> Mountlake Terrace I-5 Commuter Parking (I-5 at 236th Street SW)	\$1,740,262	\$17,529,000
05-07	<b>King County Metro (GCA 4939)</b> SeaTac Connector (Operations phase) The construction phase was canceled, so these numbers reflect the change in scope	\$750,000	\$3,457,000
05-07	<b>Intercity Transit (GCA 6106)</b> Martin Way Park and Ride Lot Renovation and Expansion	\$1,259,360	\$2,480,200
05-07	<b>Skagit Transit / Island Transit (GCA T4940AA &amp; T4940AB)</b> Everett Connector Service - Phase I and the purchase of 2 buses	\$1,970,000	\$2,740,000
05-07	<b>Skamania County (GCA 4938)</b> Salmon Falls Park and Ride	\$297,500	\$425,000
05-07	<b>King County Metro (GCA 6109)</b> North I-405 Transit Access Project - Brickyard Park and Ride	\$2,000,000	\$4,242,990
05-07	<b>King County Metro (GCA 6107)</b> Seattle North CBD Transit Access Improvements, Stewart St/Olive Way & Virginia/Fairview Corridors	\$1,800,000	\$2,120,000
07-09	<b>Community Transit (GCA 5257)</b> Swift Bus Rapid Transit (BRT) Transit Stations	\$2,383,001	\$27,644,189
07-09	<b>C-Tran (GCA 5402)</b> I-5 Commuter Service Augmentation	\$590,000	\$759,000
07-09	<b>Link Transit (GCA 5262)</b> North Wenatchee Park and Ride	\$752,400	\$836,000
07-09	<b>City of Kenmore (GCA 5260)</b> SR 522 Multi-Modal Corridor Project - Phase II	\$1,800,000	\$23,112,168
07-09	<b>Skagit Transit / Island Transit (GCA T4940aa &amp; T4940ab)</b> Commuter Express Connector Service to Everett Station Phase II	\$1,440,000	\$1,600,000
07-09	<b>Kitsap Transit (GCA 6115)</b> Harper Park and Ride	\$2,400,000	\$6,936,865
07-09	<b>Sound Transit (GCA 6110)</b> Construct Mountlake Terrace Freeway Station	\$5,000,000	\$30,545,000
07-09	<b>Everett Transit (GCA 6116)</b> Swift Bus Rapid Transit - Northern Terminal at Everett Station	\$1,989,823	\$2,235,756
07-09	<b>City of Shoreline (GCA 6113)</b> Aurora BAT 165-185	\$2,500,000	\$42,804,000
07-09	<b>Sound Transit (GCA 6112)</b> Expand Commuter Rail Parking Tacoma-Seattle Corridor	\$3,700,000	\$4,200,000
07-09	<b>City of Seattle (GCA 6118)</b> Pine / Westlake Hub Regional Transit Corridor Improvements	\$3,230,000	\$3,650,000
07-09	<b>Skagit Transit (GCA 6117)</b> Chuckanut Park and Ride	\$2,000,000	\$5,200,000
09-11	<b>Sound Transit (GCA 6508)</b> Sound Transit Express Bus Expansion - Snohomish to King County Service Improvement	\$4,496,768	\$8,348,109
09-11	<b>Skagit Transit (GCA 6126)</b> South Mount Vernon Park and Ride	\$750,000	\$5,253,000
09-11	<b>Community Transit (GCA 6121)</b> Double Decker Buses	\$2,880,000	\$19,204,000
09-11	<b>C-Tran (GCA 6128)</b> I-5 Express Commuter Service Augmentation (continuation)	\$578,496	\$784,996
09-11	<b>Island Transit (GCA 6131)</b> The Everett Connector	\$1,624,000	\$2,030,000
09-11	<b>Clark County (GCA 6124)</b> Salmon Creek Interchange Park-and-Ride and Traffic Signal Coordination	\$3,400,000	\$8,700,000
09-11	<b>City of Federal Way (GCA 6130)</b> Pacific Highway South HOV Lanes Phase IV (South 312th Street to Dash Point Road)	\$1,300,000	\$21,280,000
09-11	<b>Pierce Transit (GCA 6127)</b> Pacific Avenue Corridor Transit Signal Priority (TSP)	\$1,803,650	\$4,359,650
09-11	<b>Everett Transit (GCA 6129)</b> Evergreen Swift Stations and TSP	\$3,630,000	\$4,537,000
<b>Completed Projects Combined Biennia Total</b>		<b>\$65,925,360</b>	<b>\$336,597,859</b>

## In-progress projects as of March 31, 2012

Biennium Cycle	Agency Project Title	Total State funded Amount	Total Spent	Remaining State Funds
07-09	<b>King County Metro (GCA 6114)</b> Pacific Highway South Transit Speed and Reliability Improvements	\$2,300,000	\$2,151,920	\$148,080
09-11	<b>Sound Transit (GCA 6122)</b> Lakewood-Tacoma Commuter Rail (D to M Street New Track and Signal)	\$8,000,000	\$8,000,000	\$0
09-11	<b>City of Shoreline (GCA 6123)</b> Aurora Avenue N, N 185th ST to N 192nd ST Business Access and Transit Lanes	\$1,000,000	\$1,000,000	\$0
09-11	<b>Intercity Transit (GCA 6125)</b> Hawks Prairie Park and Ride Lot	\$6,565,676	\$2,798,020	\$3,767,656
09-11	<b>City of Seattle (GCA 6507)</b> Rainier/Jackson Transit Priority Corridor Improvements Service Improvement	\$4,000,000	\$2,025,742	\$1,974,258
09-11	<b>City of Bothell (GCA 6509)</b> SR 522 West City Limits to NE 180th Stage 2 A	\$2,100,000	\$247,511	\$1,852,489
09-11	<b>King County Metro (GCA 6648)</b> Route 120 Transit Enhancements	\$2,233,000	\$140,099	\$2,092,901
09-11	<b>King County Metro GCA 6395/6)</b> Southeast King County connector Service Improvement	\$5,024,560	\$1,303,690	\$3,720,870
09-11	<b>Community Transit (GCA 6119) Providing service</b> Swify Bus Rapid Transit Operations	\$5,000,000	\$3,161,758	\$1,838,242
09-11	<b>King County Metro (GCA 6120) Providing service</b> Central Eastside Transit Service Improvements	\$3,913,187	\$1,836,229	\$2,076,958
11-13	<b>City of Lakewood (GCA 6755)</b> Lakewood Station Connection	\$3,000,000	\$0	\$3,000,000
11-13	<b>City of Renton (GCA 6756)</b> Rainier Ave. S. Bus Access Transit Lanes	\$1,500,000	\$0	\$1,500,000
11-13	<b>City of Shoreline (GCA 6757)</b> N 192nd St to N 205th St BAT Lanes	\$5,507,839	\$753,138	\$4,754,701
11-13	<b>City of Tukwila (GCA 6758)</b> Tukwila Urban Center	\$3,900,000	\$0	\$3,900,000
11-13	<b>King County Metro (GCA 6759)</b> South Kirkland Park and Ride	\$485,000	\$0	\$485,000
11-13	<b>Kitsap Transit (GCA 6760)</b> Poulsbo SR 305/3 Park and Ride	\$1,900,000	\$0	\$1,900,000
11-13	<b>Pierce Transit (GCA 6761)</b> 112th and Pacific/SR 7 Transit Access Improvements	\$700,883	\$0	\$700,883
11-13	<b>Seattle DOT (GCA 6762)</b> Northwest Market/45th St. Transit Priority Corridor Improvements	\$4,000,000	\$0	\$4,000,000
11-13	<b>Seattle DOT (GCA 6763)</b> King Street Station Restoration Project	\$1,250,000	\$0	\$1,250,000
11-13	<b>Sound Transit (GCA 6764)</b> S 200th Intermodal Station and park and ride	\$3,600,000	\$0	\$3,600,000
11-13	<b>Spokane Transit (GCA 6765)</b> Plaza Improvements - Wall Street Reconfiguration	\$1,352,000	\$0	\$1,352,000
11-13	<b>Skagit Transit (GCA 6877)</b> Alger Park and ride	\$1,198,350	\$23,602	\$1,174,748
<b>Totals</b>		<b>\$68,530,495</b>	<b>\$23,441,709</b>	<b>\$45,088,786</b>

## Regional Mobility Grant Program - 2011-2013 Biennium Budget

Reappropriated funds for In-Progress 2007-2011 Biennium Projects	\$8,942,000
Appropriated funds for new 2011-2013 Biennium Projects	\$40,000,000
<b>Total Funding for the 2009-2011 Biennium</b>	\$48,942,000
Less In-progress and New Project Obligated Costs for the 2011-2013 Biennium	-\$48,278,697
<b>Fund Balance</b>	<b>\$663,303</b>

### Cancelled Projects as of March 31, 2012

Biennium Cycle	Lead Agency Project Title
05-07	<b>King County Metro (GCA 4946)</b> Sea-Tac Airport Connector Service (Construction phase)
05-07	<b>Pierce Transit</b> Peninsula Park and Ride Project Phase I
07-09	<b>City of Renton / City of Tukwila</b> Tukwila Station
07-09	<b>Pierce Transit</b> Peninsula Park and Ride Project Phase II Median In-line Transit Station
07-09	<b>Spokane Transit</b> Mission and Greene Community Transit Center
09-11	<b>Pierce Transit</b> SR-7 Pacific Avenue Express Service

These projects were canceled for a variety of reasons, which include an agencies change in priorities, and unavailable matching funds.

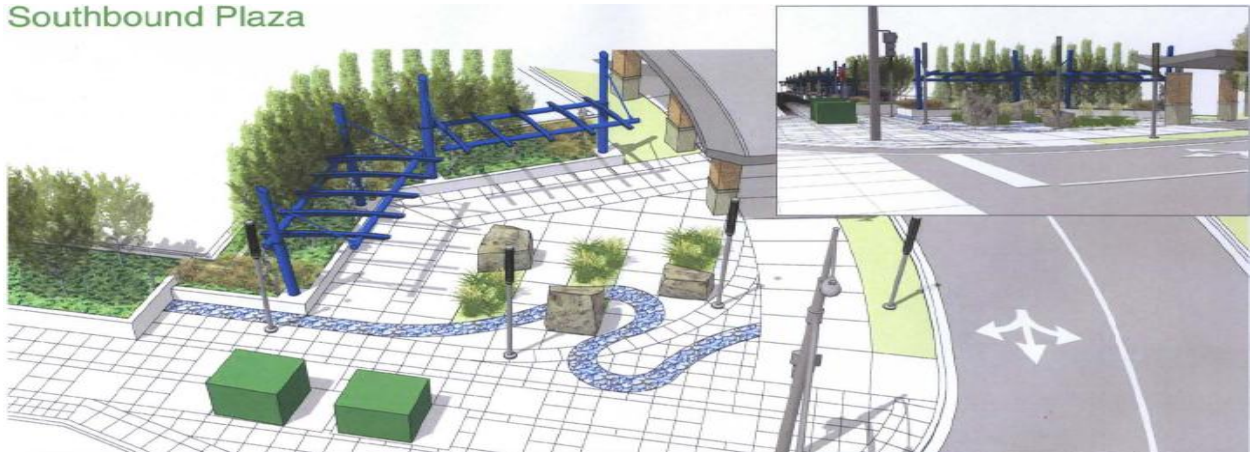


City of Bothell, SR 522 previously constructed segment



Beginning of stage 2A, construction will start in May 2012

Southbound Plaza



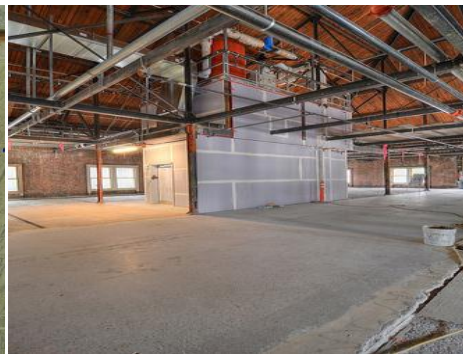
City of Tukwila, Tukwila Urban Center



Sound Transit, Lakewood to Tacoma Commuter Rail D to M Street waterproofing Pacific Ave and retaining wall construction



Spokane Transit, Plaza Improvements new bus shelters and street reconfiguration



Seattle Department of Transportation King Street Station 1<sup>st</sup> floor elevator lobby near completion and 2<sup>nd</sup> floor elevator lobby under construction