

Behavioral Health Facilities Report



Progress report per House Bill 1102, Section 1041(13), Laws of 2019, Chapter 413

Acknowledgments

Washington State Department of Commerce

Mark Barkley, Assistant Director, Local Government
Division

Tony Hanson, Deputy Assistant Director, Local
Government Division

Matt Mazur-Hart, Community Facilities Manager,
Community Capital Facilities Unit

Tanya Mercier, Community Facilities Supervisor,
Community Capital Facilities Unit

Amber Siefer, Behavioral Health Siting
Administrator, Community Capital Facilities Unit

Washington State Department of Commerce

BEHAVIORAL HEALTH FACILITIES PROGRAM

Community Capital Facilities Unit

1011 Plum St. SE
P.O. Box 42525
Olympia, WA 98504-2525

www.commerce.wa.gov

For people with disabilities, this report is available
on request in other formats. To submit a request,
please call 360.725.4000 (TTY 360.586.0772)

Table of Contents

Executive Summary	2
Introduction.....	3
Behavioral Health Facilities Program Overview.....	4
Crisis Mental Health Treatment.....	5
Long-Term Mental Health Treatment	6
Outpatient Treatment.....	7
Substance Use Disorder Treatment.....	8
Other Behavioral Health	9
Applications Received and Funded for all Competitive BHF Funding Rounds.....	10
Behavioral Health Data Integration Project	11
Appendix A - All Commerce-Funded Behavioral Health Facilities	12
Bibliography	41

Executive Summary

Authorizing Legislation

In the 2019-21 capital budget, the Legislature directed Commerce to prepare a one-time report summarizing progress in issuing grants for community behavioral health facilities as follows:

(13) The department must provide a progress report by November 1, 2020. The report must include:

- (a) The total number of applications and amount of funding requested;
- (b) A list and description of the projects approved for funding including state funding, total project cost, services anticipated to be provided, bed capacity, and anticipated completion date; and
- (c) A status report of projects that received funding in prior funding rounds, including details about the project completion and the date the facility began providing services.

Background

Commerce's Behavioral Health Facilities (BHF) Program funds **community-based behavioral health facilities** across Washington. The number of grants awarded has increased in recent biennia as Governor Inslee's behavioral health plan aims to **transition individuals civilly committed out of Western and Eastern State Hospitals**. This report provides details about the number of projects funded through the BHF Program, including their status, facility type, total project cost, and location.

Since the start of the program in the 2013-15 biennium, the BHF Program has **made 139 awards to 119 different projects** statewide across a variety of facility types. Grouping these facility types into five categories, the BHF program has funded **615** crisis mental health treatment beds, **488** long-term mental health treatment beds, **468** substance use disorder treatment beds, **27** outpatient treatment facilities, and **498** beds in other behavioral health categories.

According to the 2020 Mental Health America ratings, Washington ranks **45th** in the country for mental health. The COVID-19 pandemic will likely increase the need for additional behavioral health care.

Recommendations

While the BHF Program has significantly increased the number of community-based facilities in our state, it is **difficult to estimate overall demand**. Commerce attempted a data integration project to coordinate data with the Department of Social and Health Services (DSHS), Health Care Authority (HCA), and the Department of Health (DOH). Significant barriers, including cost, prevented completion of the data coordination effort.

- Contract with a business analyst to develop a business plan for how to establish a shared behavioral health relational database and interface. Commerce's initial cost estimate to develop the business plan is a \$100,000 contract for a business analyst, plus eight hours of dedicated staff time from each of the four state agencies, every month, for three to four months, plus a part-time staff person to manage the contract and serve as the project lead alongside the business analyst.
- Using the plan put forward by the business analyst, develop the shared database across partner agencies.

Introduction

Governor's Plan Calls for Treating More Patients in Community-Based Settings

Following Governor Jay Inslee's plan, Washington state has made significant investments in community behavioral health facilities. The governor's plan aims to transform Western and Eastern State Hospitals into forensic mental health treatment hospitals, while **transitioning civilly committed individuals out of the state hospitals and into community-based treatment settings**. The plan also aims to divert individuals from entering the state hospitals by providing community-based care first. Many mental health experts favor community-based treatment because it provides individuals better access to vital supports like family, employment, housing, and community resources. It also provides services in a residential setting, rather than an institutional one.

The transition to community-based treatment has led to additional funding for Commerce's Behavioral Health Facilities (BHF) Program. The BHF Program has funded a wide variety of facility types in an effort to offer an array of community-based treatment models to better accommodate different therapeutic needs.

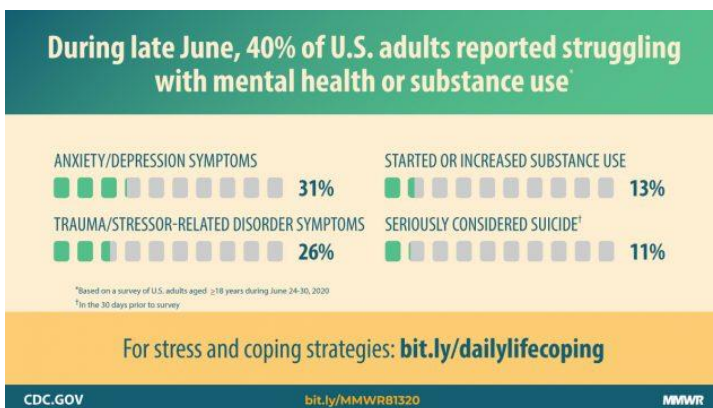


Commerce BHF-funded facility in Brush Prairie, WA

Urgent Need for Behavioral Health Services Worsened by COVID-19

Washington ranks 45th in the country for mental health, according to the 2020 Mental Health America ratings. The ranking is based on both the prevalence of mental illness and access to care in each state. The report notes that Washington has a very high prevalence of mental health and substance abuse issues, while only maintaining an average rate of access to care. The need among young people is growing the most, as the number of youth in Washington with a serious mental illness has almost doubled over the last decade. Despite this growing need, one study estimates that only 28% of youth with severe depression receive consistent treatment.

Overall, approximately 650,000 Washingtonians receive behavioral health treatment. However, an additional **700,000 with mental health concerns are not receiving treatment**. The number of Washingtonians in need of mental health treatment is **predicted to increase even further as a result of the COVID-19** pandemic and resulting economic downturn. Studies show that suicide and drug overdose rates are both highly influenced by unemployment. Moreover, data from the Centers for Disease Control (CDC), displayed in the graphic on the left, shows that in late June 2020 **40% of all U.S. adults said they were struggling with mental health or substance use**. Experts predict this number will worsen as the pandemic continues.



Behavioral Health Facilities Program Overview



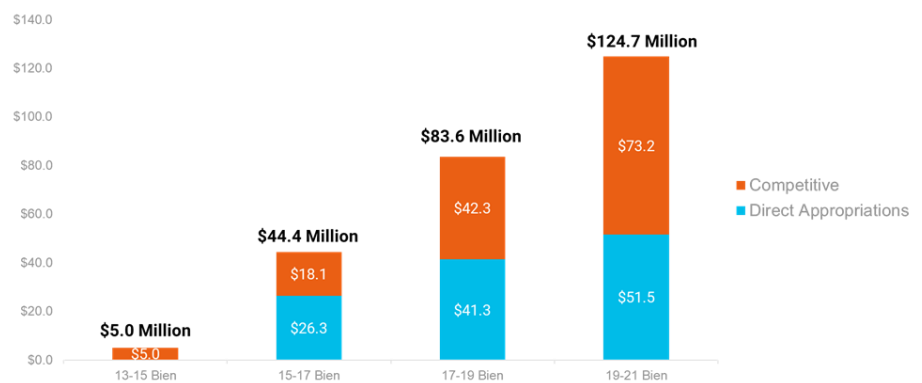
Commerce BHF-funded facility in Spokane Valley, WA

The Behavioral Health Facilities (BHF) Program provides grants to eligible organizations to **construct, renovate, or acquire property to expand behavioral health service capacity**. All projects funded through the BHF Program must commit to provide behavioral health services for at least 15 years (10 years for projects funded before the 2019-21 biennium).

Commerce awards the grant funds both through a competitive process and through direct appropriations specifically designated for funding by the Legislature.

Nonprofits, for-profit businesses, public entities, and tribes are all eligible to apply during a competitive funding round. Maximum awards are \$2 million and Commerce strives for **geographic diversity** when selecting projects. As shown below, **funding for the program has significantly increased** as the state has prioritized community-based treatment.

Commerce relies heavily on its state and local partners to administer portions of the BHF Program, both by scoring applications received during competitive funding rounds and by serving on the **Behavioral Health Facilities Advisory Group**. Our partners meet with Commerce BHF staff monthly as part of the BHF Advisory Group. Behavioral health staff from the Department of Social and Health Services, Health Care Authority, and Department of Health, along with representatives from the association of counties, Managed Care Organizations (MCO), Accountable Communities of Health (ACH), and Behavioral Health Administrative Service Organizations (BH-ASO) all help Commerce craft application questions and score funding proposals. For the peer respite applications, people with lived experience served on the review panel. Commerce also coordinates closely with our state agency partners to align the administrative rules and operating funds for the BHF-funded facilities. All facilities are licensed by either the Department of Health or Department of Social and Health Services, depending on the facility type.

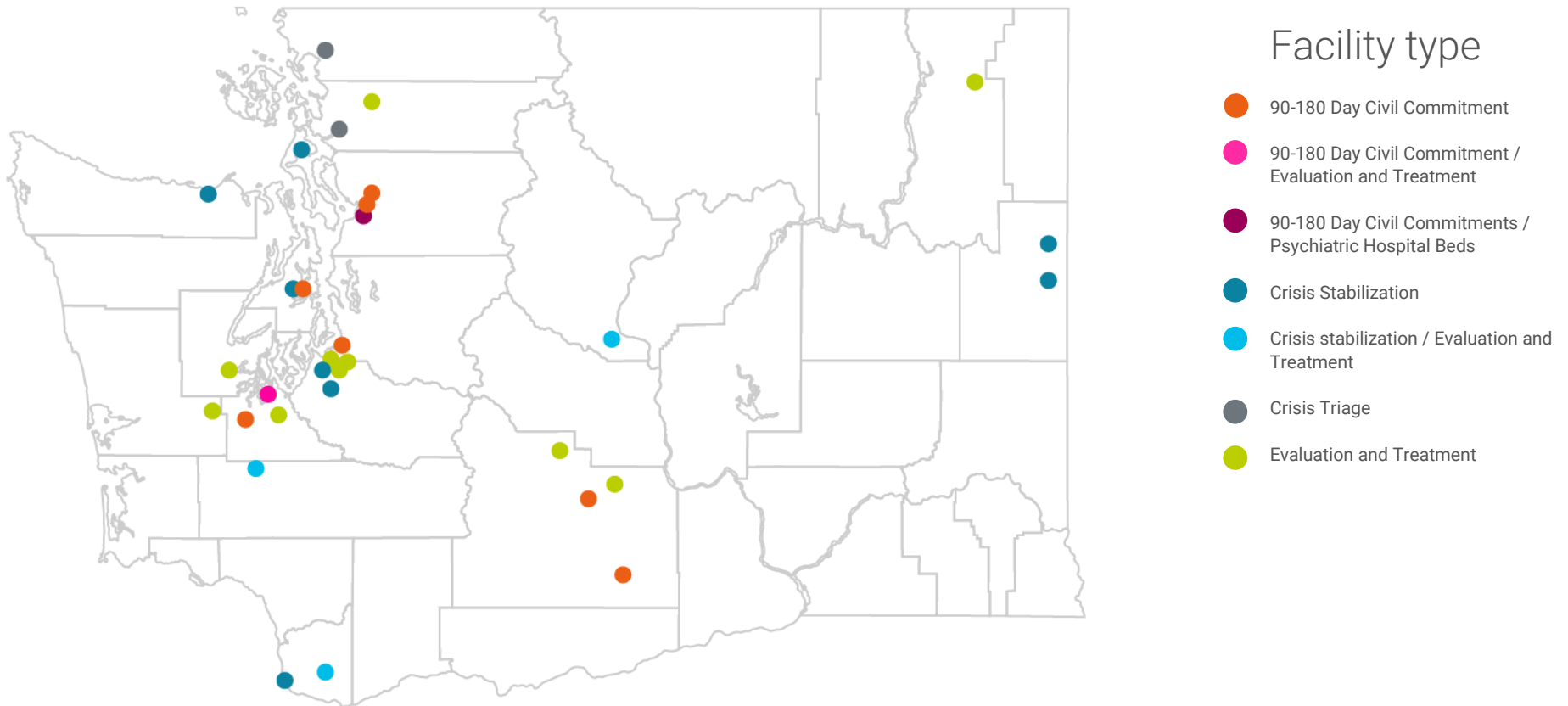


Commerce also coordinates closely with our state agency partners to align the administrative rules and operating funds for the BHF-funded facilities. All facilities are licensed by either the Department of Health or Department of Social and Health Services, depending on the facility type.

The BHF-funded projects are grouped into five facility categories:

- Crisis mental health treatment (**615 beds**),
- Long-term mental health treatment (**488 beds**),
- Outpatient treatment (**27 facilities**),
- Substance use disorder treatment (**468 beds**),
- Other behavioral health (**498 beds**).

Crisis Mental Health Treatment



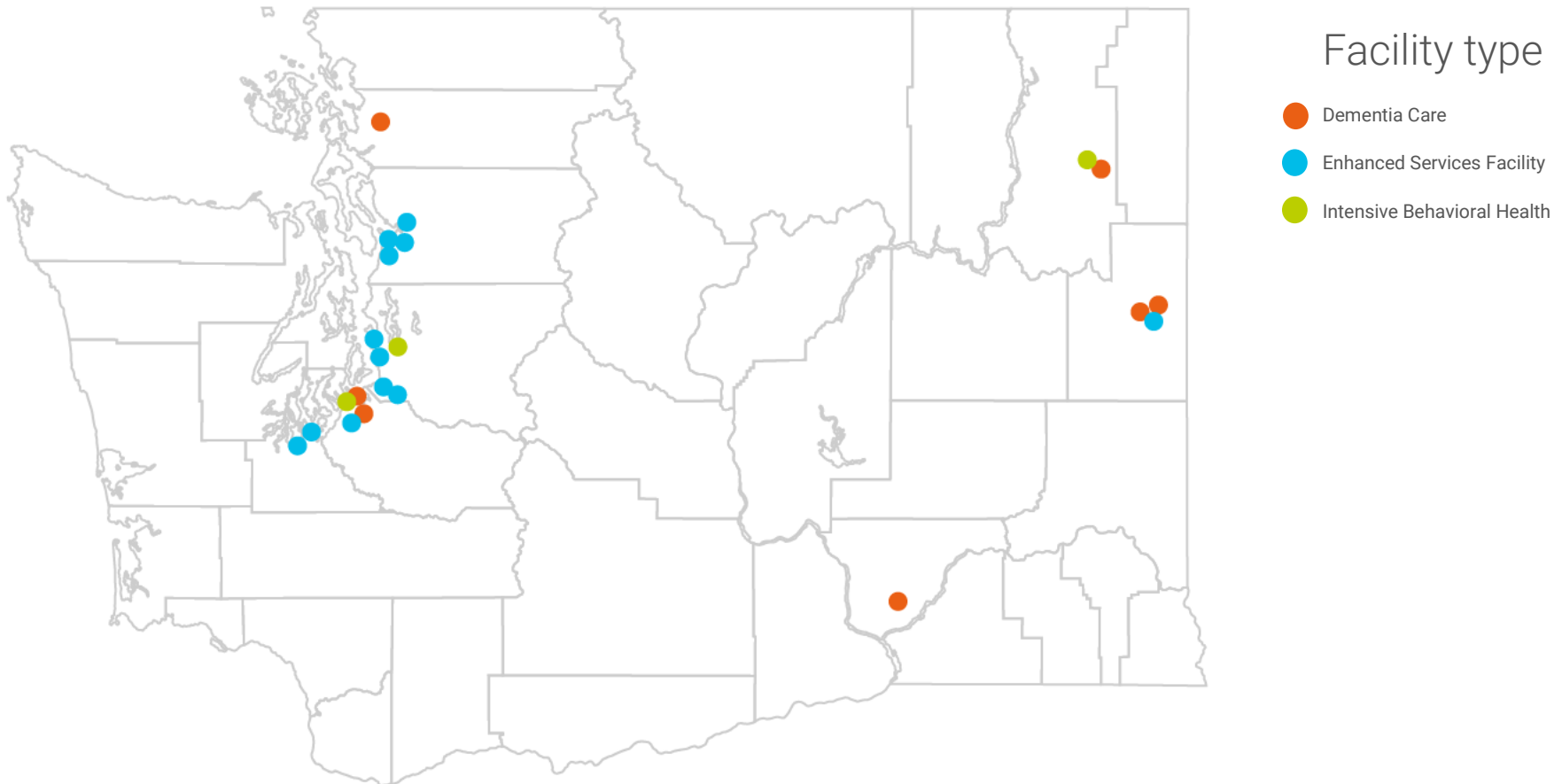
Crisis Stabilization - A short-term facility or portion of a facility that has been designed to assess, diagnose and treat persons experiencing an acute crisis without the use of long-term hospitalization.

Evaluation and Treatment - A facility that can provide emergency evaluation and treatment, outpatient care, and timely and appropriate inpatient care to persons suffering from mental disorders.

90/180 Day Civil Commitments - Individuals who are civilly committed to inpatient treatment for a defined period of time.

Crisis Triage - A short-term facility or a portion of a facility designed to assess and stabilize an individual or determine the need for involuntary commitment of an individual.

Long-Term Mental Health Treatment

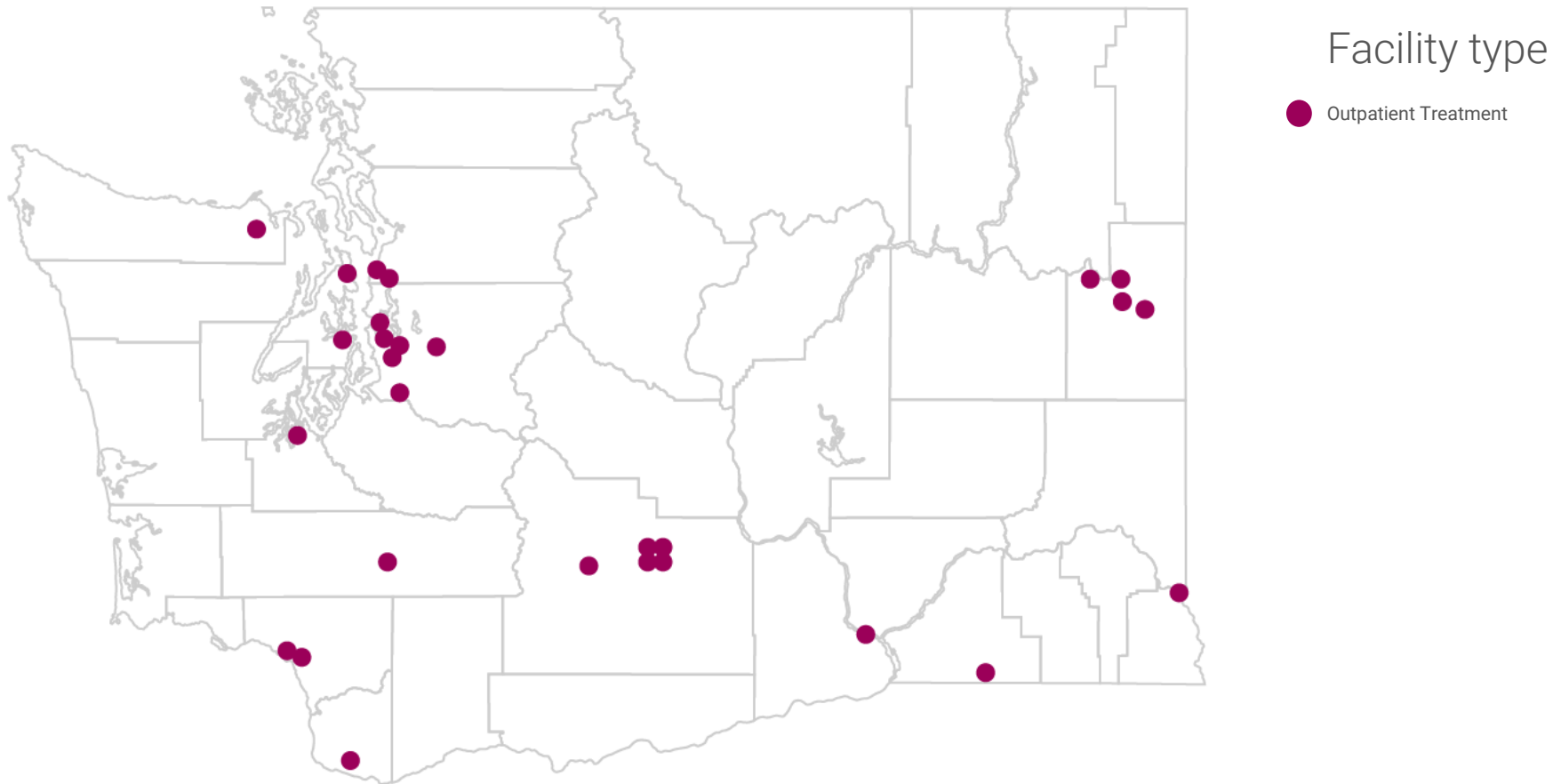


Enhanced Services Facilities – A facility that provides support and services to persons for whom acute inpatient treatment is not medically necessary.

Intensive Behavioral Health Facilities – A specialized residential treatment facility for individuals with behavioral health conditions, including individuals discharging or being diverted from state and local hospitals, whose impairment or behaviors do not meet, or no longer meet, criteria for involuntary inpatient commitment, but whose care needs cannot be met in other community placement settings.

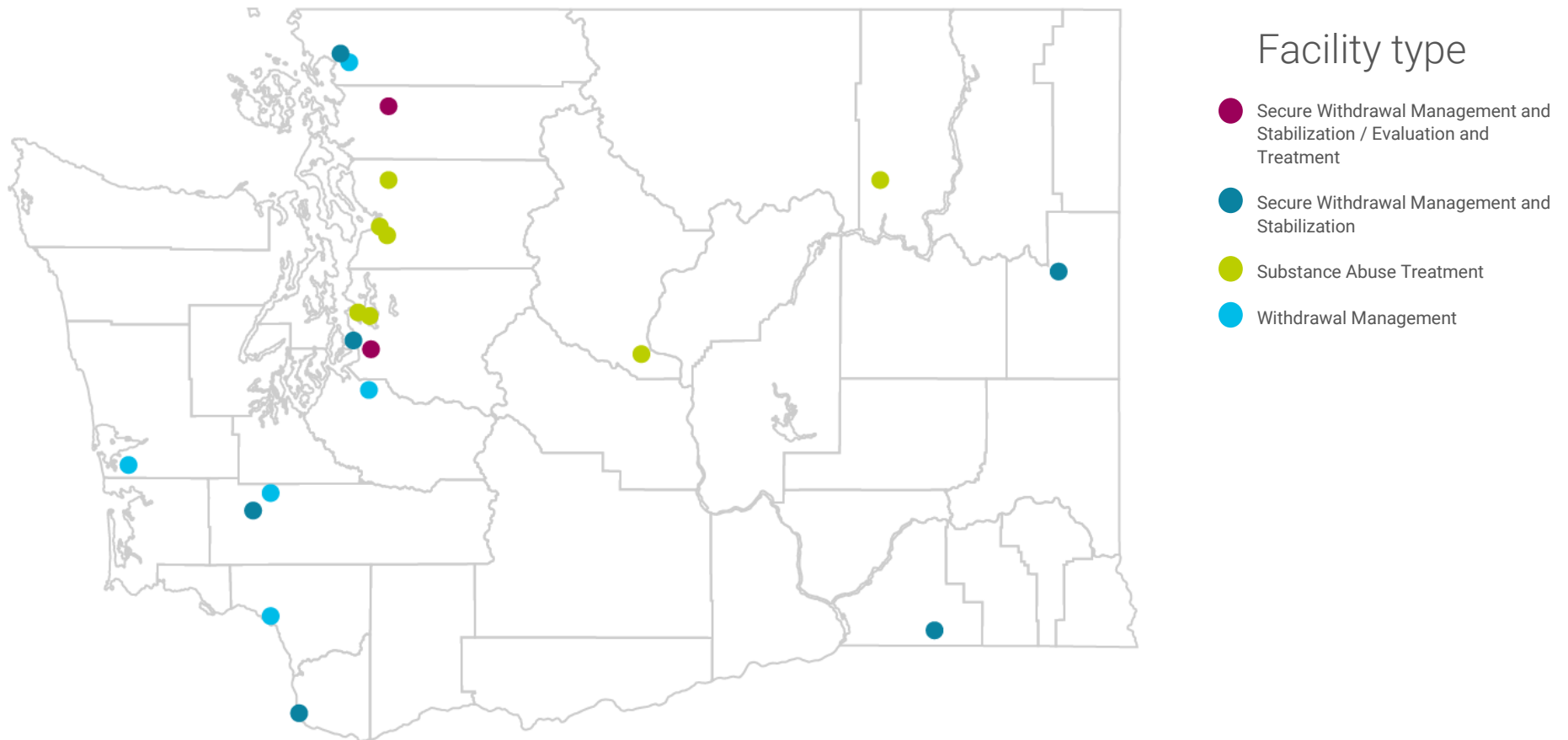
Dementia Care Facilities - A secure facility that provides specialized long-term care services for persons with dementia, including Alzheimer's.

Outpatient Treatment



Outpatient Treatment – Facilities that provide behavioral health services to patients who live in the community. These facilities do not provide inpatient beds.

Substance Use Disorder Treatment

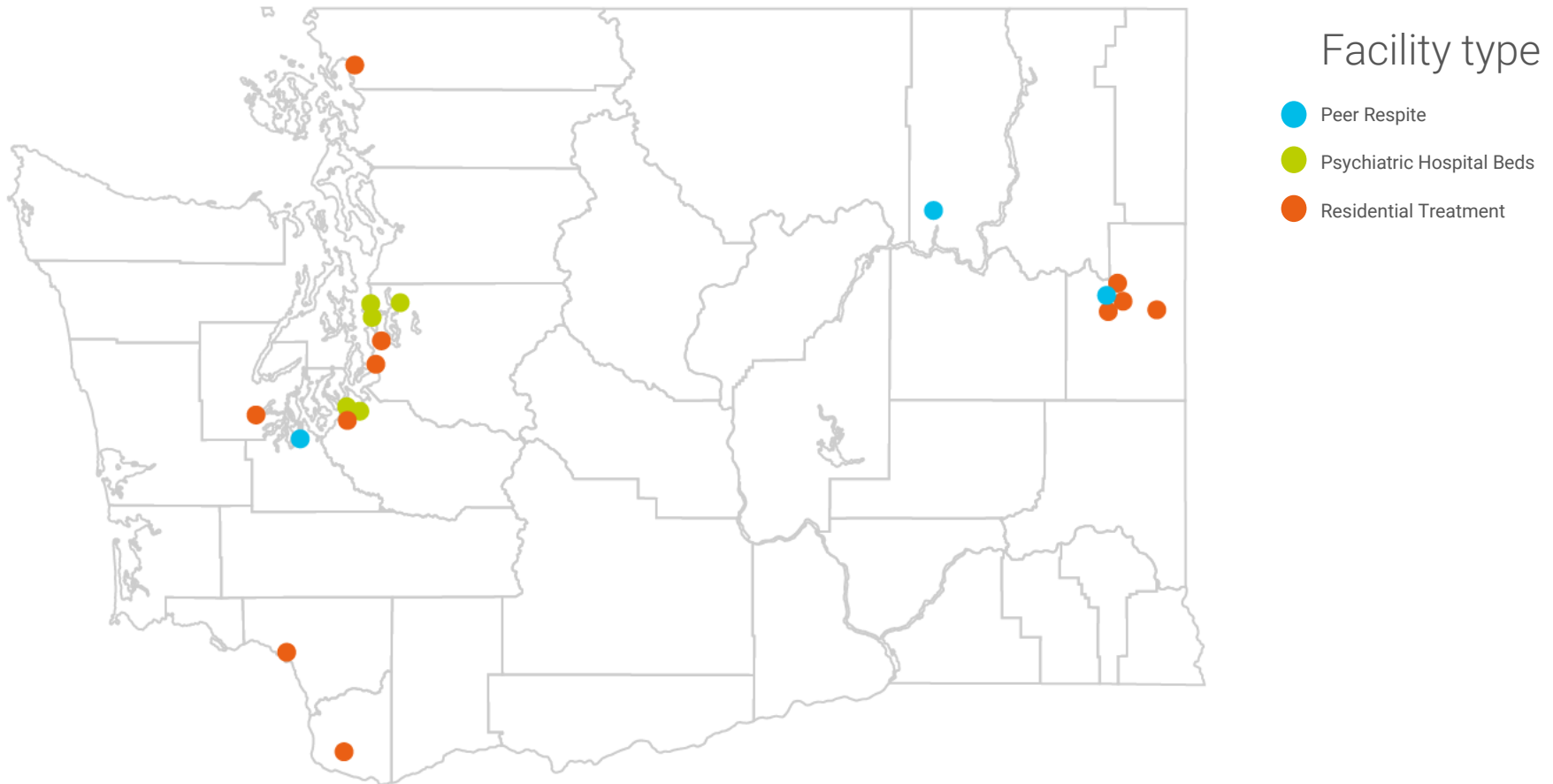


Secure Withdrawal Management and Stabilization – A facility that provides care to voluntary individuals and individuals involuntarily detained and committed for whom there is a likelihood of serious harm or who are gravely disabled due to the presence of a substance use disorder.

Withdrawal Management – Withdrawal management services provided to an individual to assist in the process of withdrawal from psychoactive substances in a safe and effective manner.

Substance Abuse Treatment – All other substance abuse treatment facilities that provide treatment to individuals with substance use disorders.

Other Behavioral Health



Peer Respite – A peer-run facility to serve individuals in need of voluntary, short-term, non-crisis services that focus on recovery and wellness.

Psychiatric Hospital Beds – Inpatient mental health facilities where individuals may go voluntarily or involuntarily.

Residential Treatment – 24-hour on-site care for the evaluation, stabilization, and/or treatment of residents for substance use, mental health, or co-occurring disorders.

Applications Received and Funded for all Competitive BHF Funding Rounds

Biennium	Funding Category	Number of Applications	Number Awarded	Percent of Applications Awarded	Funding Requested	Funding Awarded*	Declined Awards
19-21	90-180 Day Civil Commitment	6	4	67%	\$ 9,983,322	\$ 7,463,600	0
19-21	Child and Minor Youth	21	15	71%	\$ 28,763,554	\$ 20,552,325	0
19-21	Dementia Care	18	7	39%	\$ 32,146,823	\$ 10,776,836	0
19-21	Enhanced Services Facility	16	7	44%	\$ 30,127,828	\$ 13,237,828	0
19-21	Intensive Behavioral Health	4	3	75%	\$ 6,851,836	\$ 5,651,836	0
19-21	Peer Respite	5	3	60%	\$ 5,550,263	\$ 3,845,263	0
19-21	Regional Behavioral Health Needs	14	5	36%	\$ 22,138,490	\$ 5,817,245	0
19-21	Secure Withdrawal Management	7	2	29%	\$ 12,499,999	\$ 4,000,000	0
17-19	90-180 Day Civil Commitment	12	9	75%	\$ 19,740,000	\$ 14,550,000	1
17-19	Acute Detox Treatment	3	2	67%	\$ 2,397,398	\$ 2,000,000	0
17-19	Children and Minor Youth	9	5	56%	\$ 10,824,333	\$ 6,834,153	1
17-19	Crisis Stabilization	9	5	56%	\$ 16,264,973	\$ 10,468,727	3
17-19	Enhanced Services Facility	8	3	38%	\$ 14,974,479	\$ 5,078,479	0
17-19	Psychiatric Residential Treatment	4	4	100%	\$ 6,993,957	\$ 6,993,957	0
17-19	Secure Detox Treatment	2	2	100%	\$ 1,985,302	\$ 1,985,302	0
15-17	Acute and Residential Treatment	36	9	25%	\$ 50,934,754	\$ 17,247,150	3
15-17	State Hospital Diversion	21	6	29%	\$ 34,237,269	\$ 7,792,881	0
13-15	Community Mental Health Beds	4	4	100%	\$ 5,500,000	\$ 5,500,000	1
	TOTALS	199	95	48%	\$ 311,914,580	\$ 149,795,581	9

* Includes Commerce Admin Fee

Behavioral Health Data Integration Project

Commerce led the Data Integration Project, beginning in July 2019, in partnership with the Department of Social and Health Services, the Health Care Authority, and the Department of Health. The project aimed to **develop a shared database** so that agencies could more readily answer questions about statewide capacity for behavioral health services and infrastructure. The project was scoped to work within existing resources, including development of business requirements to track and evaluate needed information on an ongoing basis beyond project completion.

The team made progress in laying needed groundwork for the project, but encountered data infrastructure and resource barriers that could not be addressed. Given additional resource constraints caused by COVID-19, Commerce put the project on hold. Ultimately, the project did not progress past the concept phase.

Challenges that prevented the project from completing

- Staff resources to create data catalogs, field and metadata definitions, and to build relational tables to prototype the database
- Program resources to mine data from existing provider contracts and to negotiate data-share agreements across agencies
- Competing agency data needs and priorities, including a long-term data information system project ongoing at the Department of Health to replace the existing legacy licensing and discipline system

Recommendations

The following recommendations are informed by feedback received from the Data Integration Team and Commerce's Information Services Unit.

- Fund a short-term contract to hire a business analyst to support the work of developing a business plan for how to establish a shared behavioral health relational database and interface. This would include reviewing the work of other states that have successfully established bed registry tracking systems. Commerce's initial cost estimate to develop the business plan is a \$100,000 contract for a business analyst, plus eight hours of dedicated staff time from each of the four state agencies, every month, for three to four months, plus a part-time staff person to manage the contract and serve as the project lead alongside the business analyst.
- Using the plan put forward by the business analyst, develop the shared database across the partner agencies. The plan developed by the business analyst should include cost estimates for the shared database, as well as estimated staff costs to mine and validate data, and track and evaluate needed information on an ongoing basis.

Appendix A - All Commerce-Funded Behavioral Health Facilities

Crisis Mental Health Treatment

Biennium	Grantee Name	Project Title	Funding Category	Facility Type	Beds	Construction Completion Date	Facility Opening Date	Commerce Award Amount	Total Project Cost	Facility Address	Facility City	Facility Zip Code
17-19	Whatcom County	Bellingham Mental Health Voluntary Triage Facility	Direct Appropriation	Crisis Triage	16	10/20/2020	11/20/2020	\$4,950,000	\$5,823,024	2030 Division Street	Bellingham	98226
17-19	Kitsap Mental Health Services	KMHS Adult Evaluation and Treatment Unit Renovation	90-180 Day Civil Commitment	90-180 Day Civil Commitment	4	12/14/2020	01/14/2021	\$339,500	\$398,763	5451 Almira Drive NE	Bremerton	98311
15-17	Kitsap County Dept of Human Services	Crisis Triage and Sub-acute Detox Beds	Acute and Residential Treatment	Crisis Stabilization	32	08/13/2018	08/16/2018	\$1,248,150	\$3,410,705	1975 Fuson Road	Bremerton	98311
17-19	Daybreak Youth Services	Daybreak Center for Adolescent Recovery	Direct Appropriation	Crisis stabilization / Evaluation and Treatment	40	6/1/2017	6/1/2017	\$2,950,000	\$9,525,300	11910 NE 154th	Brush Prairie	98606

Biennium	Grantee Name	Project Title	Funding Category	Facility Type	Beds	Construction Completion Date	Facility Opening Date	Commerce Award Amount	Total Project Cost	Facility Address	Facility City	Facility Zip Code
15-17	Daybreak Youth Services	40-bed Residential Treatment Facility (RTF)	Direct Appropriation	Crisis stabilization / Evaluation and Treatment	40	6/1/2017	6/1/2017	\$1,500,000	\$9,525,300	11910 NE154th	Brush Prairie	98606
15-17	Cascade Mental Health	Cascade Mental Health	Direct Appropriation	Evaluation and Treatment / Crisis Stabilization	22	5/1/2018	5/1/2018	\$3,000,000	\$9,135,080	3510 Steel-hammer Ln	Centralia	98531
17-19	Providence Mount Carmel Hospital	Alliance Evaluation & Treatment Unit Expansion	90-180 Day Civil Commitment	Evaluation and Treatment	1	12/31/2020	01/04/2021	\$630,500	\$750,500	982 East Columbia Avenue	Colville	99114
15-17	Providence Mount Carmel Hospital	Providence Mount Carmel Hospital	Acute and Residential Treatment	Evaluation and Treatment	16	9/1/2018	9/18/2018	\$2,000,000	\$2,859,352	982 E. Columbia	Colville	99114
19-21	Providence Health & Services - WA	Providence Regional Medical Center - Everett	Direct Appropriation	90-180 Day Civil Commitment / Psychiatric Hospital Beds	24	06/30/2021	08/02/2021	\$4,650,000	\$8,595,861	1321 Colby Ave	Everett	98201

Biennium	Grantee Name	Project Title	Funding Category	Facility Type	Beds	Construction Completion Date	Facility Opening Date	Commerce Award Amount	Total Project Cost	Facility Address	Facility City	Facility Zip Code
17-19	Compass Health	Compass Health Evaluation & Treatment Facility	90-180 Day Civil Commitment	90-180 Day Civil Commitment	16	11/01/2022	12/01/2022	\$1,950,000	\$12,744,368	3322 Broadway Ave.	Everett	98201
17-19	Providence Health & Services - WA	Providence Regional Medical Center - Everett	90-180 Day Civil Commitment	90-180 Day Civil Commitment	18	06/30/2021	08/02/2021	\$1,950,000	\$8,595,861	1321 Colby Ave	Everett	98201
17-19	Providence Health & Services - WA	Providence Regional Medical Center - Everett	90-180 Day Civil Commitment	90-180 Day Civil Commitment	6	06/30/2021	08/02/2021	\$1,950,000	\$8,595,861	1321 Colby Ave	Everett	98201
17-19	Compass Health	Compass Health Residential Treatment Facility	Psychiatric Residential Treatment	90-180 Day Civil Commitment	16	11/01/2022	12/01/2022	\$1,950,000	\$9,558,276	3322 Broadway Ave.	Everett	98201
19-21	Recovery Innovations, Inc. dba RI International	RI International King County LTCC E&T	90-180 Day Civil Commitment	90-180 Day Civil Commitment	16	2/1/2021	2/1/2021	\$1,960,000	\$4,455,739	822 S. 333rd St.	Federal Way	98003

Biennium	Grantee Name	Project Title	Funding Category	Facility Type	Beds	Construction Completion Date	Facility Opening Date	Commerce Award Amount	Total Project Cost	Facility Address	Facility City	Facility Zip Code
15-17	RI International	RI International	State Hospital Diversion	Evaluation and Treatment	16	12/1/2017	12/1/2017	\$928,835	\$928,835	2150 Freeman Road E	Fife	98424
13-15	Thurston County Public Health & Social Services	Thurston-Mason County MH Triage Center	Community Mental Health Beds	Evaluation and Treatment	10	08/01/2016	08/01/2016	\$1,320,000	\$2,037,363	612 Woodland SQ. Loop SE Suite 401	Lacey	98503
19-21	Unity Evaluation And Treatment Center LLC	Unity 90-180 Day Long-Term Civil Commitment (LTCC) Orders	90-180 Day Civil Commitment	90-180 Day Civil Commitment	16	10/1/2021	10/1/2021	\$1,852,200	\$2,412,640	12529 State Ave	Marysville	98270
15-17	Great Rivers Behavioral Health	Great Rivers Behavioral Health	Acute and Residential Treatment	Evaluation and Treatment	16	9/1/2019	9/23/2019	\$2,000,000	\$2,186,161	322 S. Birch St	McCleary	98557
15-17	Telecare	Telecare	Acute and Residential Treatment	Evaluation and Treatment	16	4/1/2019	4/1/2019	\$2,000,000	\$7,324,135	7724 Pacific Highway East	Milton	98354

Biennium	Grantee Name	Project Title	Funding Category	Facility Type	Beds	Construction Completion Date	Facility Opening Date	Commerce Award Amount	Total Project Cost	Facility Address	Facility City	Facility Zip Code
17-19	Public Hospital District No. 1, Skagit County	Skagit Regional Health Behavioral Triage Expansion	Direct Appropriation	Crisis Triage	2	12/1/2019	1/1/2020	\$316,220	\$316,220	300 Hospital Parkway	Mount Vernon	98273
19-21	Island County (was NSBHO)	Tri-County Sub-Acute Detox and Crisis Center	Direct Appropriation	Crisis Stabilization	10	09/22/2020	01/01/2021	\$980,000	\$6,930,000	275 NE 10th Ct	Oak Harbor	98277
17-19	Island County	Tri-County Sub-Acute Detox and Crisis Center	Direct Appropriation	Crisis Stabilization	10	09/22/2020	01/01/2021	\$3,950,000	\$6,930,000	275 NE 10th Ct	Oak Harbor	98277
17-19	Recovery Innovations, Inc.	RI International Evaluation and Treatment Center Creation - Thurston County for DSHS	90-180 Day Civil Commitment	90-180 Day Civil Commitment / Evaluation and Treatment	16	12/30/2020	12/30/2020	\$1,503,500	\$1,791,111	3432 South Bay NE	Olympia	98506
15-17	Peninsula Behavioral Health	Clallam County Respite Center	Direct Appropriation	Crisis Stabilization	6	12/1/2014	12/1/2014	\$540,562	\$847,000	112 East 8th Street	Port Angeles	98362

Biennium	Grantee Name	Project Title	Funding Category	Facility Type	Beds	Construction Completion Date	Facility Opening Date	Commerce Award Amount	Total Project Cost	Facility Address	Facility City	Facility Zip Code
19-21	Skagit County (was NSBHO)	North Sound Stabilization Campus - Sedro Woolley North Sound Evaluation and Treatment Center	Direct Appropriation	Evaluation and Treatment	40	9/1/2021	12/01/2021	\$6,550,000	\$11,035,356	1420 State Route 20	Sedro-Woolley	98284
15-17	Comprehensive Healthcare	Central WA Comprehensive Mental Health	Direct Appropriation	Evaluation and Treatment	16	04/19/2019	04/19/2019	\$2,000,000	\$3,973,109	609 Speyers Rd	Selah	98942
15-17	Thurston Mason BHO	TMBHO Long Term Residential Treatment Facility /Phase One	Acute and Residential Treatment	Evaluation and Treatment	16	12/21/2019	12/21/2019	\$2,000,000	\$2,634,000	307 W Cota St	Shelton	98584
19-21	Spokane County	Spokane Mental Health Crisis Stabilization Facility	Direct Appropriation	Crisis Stabilization	32	6/1/2021	7/1/2021	\$1,960,000	\$9,307,079	1302 W. Gardner	Spokane	99021

Biennium	Grantee Name	Project Title	Funding Category	Facility Type	Beds	Construction Completion Date	Facility Opening Date	Commerce Award Amount	Total Project Cost	Facility Address	Facility City	Facility Zip Code
19-21	Spokane County	Spokane Mental Health Crisis Stabilization Facility	Trueblood	Crisis Stabilization	32	6/1/2021	7/1/2021	\$1,960,000	\$9,307,079	1302 W. Gardner	Spokane	99021
17-19	Spokane County	Spokane Mental Health Crisis Stabilization Facility	Direct Appropriation	Crisis Stabilization	32	6/1/2021	7/1/2021	\$2,350,000	\$9,307,079	1302 W. Gardner	Spokane	99021
17-19	Spokane Treatment and Recovery Services	STARS Integrated Health	Crisis Stabilization	Crisis Stabilization	64	12/01/2021	02/01/2022	\$1,950,000	\$2,229,780	13220 E Nora Ave	Spokane Valley	99216
17-19	Mary Bridge Children's Foundation	Adding Psych-Safe Rooms at Mary Bridge Children's Hospital	Children and Minor Youth	Crisis Stabilization	5	01/10/2018	01/11/2018	\$793,185	\$1,275,000	315 Martin Luther King Jr. Way	Tacoma	98405
17-19	Pierce County	Pierce County Crisis Triage / Stabilization Facility	Crisis Stabilization	Crisis Stabilization	16	11/23/2020	11/23/2020	\$3,150,000	\$6,119,200	11405 Bob Findlay Rd. E.	Tacoma	98445

Biennium	Grantee Name	Project Title	Funding Category	Facility Type	Beds	Construction Completion Date	Facility Opening Date	Commerce Award Amount	Total Project Cost	Facility Address	Facility City	Facility Zip Code
13-15	Metropolitan Development Council (MDC)	Evaluation and Treatment Center (E&T)	Community Mental Health Beds	Evaluation and Treatment	16	1/1/2015	1/1/2015	\$1,320,000	\$1,500,000	721 Fawcett Ave. Suite 201	Tacoma	98402
19-21	SHC Medical Center - Toppenish/ Astria Toppenish Hospital	Astria Toppenish Hospital 90 Day Bed Project	90-180 Day Civil Commitment	90-180 Day Civil Commitment	10	8/1/2021	8/1/2021	\$1,960,000	\$2,007,004	502 W. 4th Ave	Toppenish	98948
17-19	Astria Toppenish Hospital	Hospital Conversion for Inpatient 90 Day Civil Commitment Beds	Direct Appropriation	90-180 Day Civil Commitment	15	12/11/2018	2/1/2019	\$485,000	\$485,000	502 W 4th Avenue	Toppenish	98948
19-21	Thurston Mason BH-ASO	Thurston County Long-Term Bed Expansion	90-180 Day Civil Commitment	90-180 Day Civil Commitment	6	8/1/2022	8/1/2022	\$1,542,128	\$1,573,600	3491 Ferguson St SW	Tumwater	98512
17-19	Lifeline Connections	Crisis Triage and Stabilization in Clark County	Crisis Stabilization	Crisis Stabilization	20	08/07/2020	08/10/2020	\$1,437,645	\$3,282,669	5197 Northwest Lower River Road	Vancouver	98660

Biennium	Grantee Name	Project Title	Funding Category	Facility Type	Beds	Construction Completion Date	Facility Opening Date	Commerce Award Amount	Total Project Cost	Facility Address	Facility City	Facility Zip Code
19-21	City of Wenatchee	The Parkside Place Project	Direct Appropriation	Crisis Stabilization / Evaluation and Treatment	55	12/31/2021	12/31/2021	\$1,960,000	\$2,044,805	1230 Monitor St.	Wenatchee	98801
15-17	North Central Washington Behavioral Health	Parkside	Direct Appropriation	Crisis Stabilization	32	10/1/2018	10/1/2018	\$4,000,000	\$4,000,000	1230 Monitor Street	Wenatchee	98801
19-21	Virginia Mason Memorial Hospital	Virginia Mason Acute Stabilization	Direct Appropriation	90-180 Day Civil Commitment	6	6/30/2021	6/30/2021	\$2,156,000	\$9,000,000	2811 Tieton Drive	Yakima	98902
19-21	Yakima Neighborhood Health Services	Yakima Neighborhood Health Services	Direct Appropriation	Evaluation and Treatment	7	4/23/2020	5/20/2020	\$478,240	\$510,819	12 S. 8th Street	Yakima	98907
17-19	Virginia Mason Memorial Hospital	Acute Stabilization for Medical-Psychiatric Patients in Central WA - Phase 1	90-180 Day Civil Commitment	90-180 Day Civil Commitment	12	6/30/2021	6/30/2021	\$1,950,000	\$4,646,112	2811 Tieton Drive	Yakima	98902

Biennium	Grantee Name	Project Title	Funding Category	Facility Type	Beds	Construction Completion Date	Facility Opening Date	Commerce Award Amount	Total Project Cost	Facility Address	Facility City	Facility Zip Code
17-19	Virginia Mason Memorial Hospital	Acute Stabilization for Medical-Psychiatric Patients in Central WA - Phase 2	90-180 Day Civil Commitment	90-180 Day Civil Commitment	12	6/30/2021	6/30/2021	\$1,950,000	\$3,132,460	2811 Tieton Drive	Yakima	98902

Long-Term Mental Health Treatment

Biennium	Grantee Name	Project Title	Funding Category	Facility Type	Beds	Construction Completion Date	Facility Opening Date	Commerce Award Amount	Total Project Cost	Facility Address	Facility City	Facility Zip Code
17-19	Kinsman Care	Kinsman Care	Enhanced Services Facility	Enhanced Services Facility	16	1/1/2021	7/1/2021	\$1,495,740	\$2,275,900	601 M Street	Auburn	98002
17-19	Sound	Sound	Enhanced Services Facility	Enhanced Services Facility	16	10/1/2021	10/1/2021	\$1,950,000	\$5,264,000	4338 Auburn Way N.	Auburn	98002
17-19	Noble Healthcare LLC	Noble Healthcare ESF	Community Behavioral Health	Enhanced Services Facility	16	TBD	TBD	\$19,865	\$1,046,125	TBD	Burien	98148
17-19	Noble Healthcare LLC	Noble Healthcare ESF	Enhanced Services Facility	Enhanced Services Facility	16	TBD	TBD	\$1,026,260	\$1,046,125	TBD	Burien	98148
19-21	Sowe Healthcare Consulting	Specialized Dementia Community	Dementia Care	Dementia Care	24	7/1/2021	7/1/2021	\$1,960,000	\$2,467,219	11054 Peacock Lane	Burlington	98233
19-21	Cascade Investing, LLC	Sycamore Glen At Quail Hollow Specialized Dementia Care Facility	Dementia Care	Dementia Care	32	12/1/2021	12/1/2021	\$1,618,799	\$1,931,836	506 N. Ehorn Lane	Chewelah	99109

Biennium	Grantee Name	Project Title	Funding Category	Facility Type	Beds	Construction Completion Date	Facility Opening Date	Commerce Award Amount	Total Project Cost	Facility Address	Facility City	Facility Zip Code
19-21	Cascade Investing, LLC	Cascade Intensive Behavioral Health	Intensive Behavioral Health	Intensive Behavioral Health	16	4/1/2022	4/1/2022	\$1,618,799	\$1,931,836	TBD E. Lincoln	Chewelah	99109
19-21	North Baker Property LLC	Kadie Glen Memory Care	Dementia Care	Dementia Care	54	10/1/2021	10/1/2021	\$1,960,000	\$5,400,000	451 N Baker Ave	East Wenatchee	98802
19-21	Respect Nursing Care	Respect Nursing Care ESF	Enhanced Services Facility	Enhanced Services Facility	16	6/1/2021	6/1/2021	\$1,940,400	\$1,980,000	10204 21st Ave West	Everett	98204
15-17	Sunrise Services, Inc.	Everett Enhanced Service Facility	State Hospital Diversion	Enhanced Services Facility	16	07/28/2018	09/01/2018	\$2,000,000	\$4,300,000	6502 Evergreen Way	Everett	98213
19-21	Emerald City Enhanced Services, LLC	Pierce County ESF	Enhanced Services Facility	Enhanced Services Facility	16	10/1/2021	10/1/2021	\$1,960,000	\$4,100,000	3862 Steilacoom Blvd. SW	Lakewood	98499
19-21	#1 Heartsaved, LLC	THE HEART-SAVED	Enhanced Services Facility	Enhanced Services Facility	16	06/30/2021	07/05/2021	\$1,362,200	\$1,512,200	6513 82nd St. NE	Marysville	98270

Biennium	Grantee Name	Project Title	Funding Category	Facility Type	Beds	Construction Completion Date	Facility Opening Date	Commerce Award Amount	Total Project Cost	Facility Address	Facility City	Facility Zip Code
19-21	Supreme Capital Holding LLC	Supreme Living - Olympia	Enhanced Services Facility	Enhanced Services Facility	15	9/24/2020	11/1/2020	\$1,960,000	\$2,372,534	6604 Martin Way SE #1	Olympia	98516
19-21	Supreme Capital Holding, LLC	Supreme Living - Olympia #2	Enhanced Services Facility	Enhanced Services Facility	15	1/15/2021	3/1/2021	\$1,960,000	\$2,632,911	6622 Martin Way E	Olympia	98516
19-21	Americare LLC	SDCP Facility Rosetta Pasco	Dementia Care	Dementia Care	40	9/1/2021	9/1/2021	\$1,960,000	\$3,000,000	5921 Road 60 Drive	Pasco	99301
19-21	Aristo Healthcare Services	Aristo IBHF	Intensive Behavioral Health	Intensive Behavioral Health	16	6/1/2021	6/1/2021	\$1,960,000	\$3,500,000	95 S Tobin St	Renton	98057
19-21	LaPlante Properties International, LLC	Liberty Place ESF	Enhanced Services Facility	Enhanced Services Facility	16	04/01/2021	4/5/2021	\$1,960,000	\$2,400,000	9111 East Upriver Drive	Spokane	99206
15-17	Upriver Place Inc.	UpRiver Inc. 8-bed Enhanced Services Facility	State Hospital Diversion	Enhanced Services Facility	8	6/1/2016	6/1/2016	\$108,916	\$108,916	9111 E. Upriver Drive	Spokane	99206

Biennium	Grantee Name	Project Title	Funding Category	Facility Type	Beds	Construction Completion Date	Facility Opening Date	Commerce Award Amount	Total Project Cost	Facility Address	Facility City	Facility Zip Code
19-21	RP Real Estate LLC	Rose Pointe Assisted Living - New Dementia Care	Dementia Care	Dementia Care	34	9/30/2020	9/30/2020	\$1,960,000	\$1,960,000	13013 E Mission Ave,	Spokane Valley	99216
19-21	Unified Residential Care Inc	Main Residential Care	Enhanced Services Facility	Enhanced Services Facility	16	4/27/2020	5/15/2020	\$1,830,472	\$1,830,472	12019 E Main Ave	Spokane Valley	99206
19-21	6th Avenue Senior Living, LLC	Northwest Retirement - SDC Program	Dementia Care	Dementia Care	41	2/1/2021	2/1/2021	\$612,500	\$6,200,000	610 N Fife Street	Tacoma	98406
19-21	Cascade Park Gardens	Cascade Park Gardens: SDC+ Expansion	Dementia Care	Dementia Care	33	12/1/2022	12/1/2022	\$490,000	\$1,850,000	4347 South Union Ave	Tacoma	98409
19-21	Comprehensive Mental Health of Tacoma Pierce County	CLR Intensive Treatment Facility	Intensive Behavioral Health	Intensive Behavioral Health	16	7/1/2021	7/1/2021	\$1,960,000	\$2,950,000	815 S Pearl St	Tacoma	98465

Outpatient Treatment

Biennium	Grantee Name	Project Title	Funding Category	Facility Type	Beds	Construction Completion Date	Facility Opening Date	Commerce Award Amount	Total Project Cost	Facility Address	Facility City	Facility Zip Code
19-21	Nexus Youth and Families	Nexus Youth and Families Campus Renewal	Direct Appropriation	Outpatient Treatment (Youth)	N/A	05/20/2020	08/11/2020	\$524,300	\$1,009,300	936 Auburn Way S.	Auburn	98002
17-19	Nexus Youth and Families	Nexus Youth and Families Campus Renewal	Direct Appropriation	Outpatient Treatment (Youth)	N/A	05/20/2020	08/11/2020	\$485,000	\$1,009,300	936 Auburn Way S.	Auburn	98002
19-21	Quality Behavioral Health	Quality Behavioral Health	Children and Minor Youth	Outpatient Treatment (Youth)	N/A	6/30/2021	6/30/2021	\$1,470,000	\$1,500,000	900 7th Street	Clarkston	99403
19-21	Community Health Center of Snohomish County - Edmonds	Community Health of Snohomish County Edmonds	Direct Appropriation	Outpatient Treatment	N/A	11/1/2020	11/1/2020	\$980,000	\$6,176,218	23320 Hwy 99	Edmonds	98026
19-21	Issaquah Opportunity Center	Issaquah Opportunity Center	Direct Appropriation	Outpatient Treatment	N/A	TBD	TBD	\$2,950,000	\$2,950,000	TBD	Issaquah	98027

Biennium	Grantee Name	Project Title	Funding Category	Facility Type	Beds	Construction Completion Date	Facility Opening Date	Commerce Award Amount	Total Project Cost	Facility Address	Facility City	Facility Zip Code
19-21	Lutheran Community Services Northwest	Expanding Mental Health in Columbia Basin	Regional Needs	Outpatient Treatment (Youth)	N/A	2/1/2021	2/1/2021	\$510,803	\$521,228	3321 W Kennewick Ave, Suite 150	Kennewick	99336
19-21	Port Gamble S'Klallam Tribe	Port Gamble S'Klallam Health and Wellness Center	Children and Minor Youth	Outpatient Treatment (Youth)	N/A	3/1/2021	3/1/2021	\$1,960,000	\$14,332,293	32014 Little Boston Rd NE	Kingston	98346
19-21	Awakenings Inc.	Project Youth	Children and Minor Youth	Outpatient Treatment (Youth)	N/A	06/01/2021	06/01/2021	\$1,623,313	\$1,623,313	1302 Commerce Ave	Longview	98632
19-21	Community Integrated Health Services, LLC	CIHS 14th Ave Longview Project	Regional Needs	Outpatient Treatment	N/A	5/1/2021	5/1/2021	\$686,000	\$700,000	1116 14th Avenue	Longview	98632
19-21	Sea Mar Community Health Centers	Lynnwood Sea Mar Behavioral Health Expansion	Direct Appropriation	Outpatient Treatment	N/A	2/26/2021	03/01/2021	\$980,000	\$5,854,680	4111 Alderwood Mall Blvd.	Lynnwood	98036

Biennium	Grantee Name	Project Title	Funding Category	Facility Type	Beds	Construction Completion Date	Facility Opening Date	Commerce Award Amount	Total Project Cost	Facility Address	Facility City	Facility Zip Code
19-21	Cascade Community Healthcare	Cascade Outpatient Child and Adolescent Program Expansion in East Lewis County	Children and Minor Youth	Outpatient Treatment (Youth)	N/A	10/22/2020	10/22/2020	\$17,993	\$19,860	228 Main Street	Morton	98356
19-21	Behavioral Health Resources	Child, Youth and Family Build out	Children and Minor Youth	Outpatient Treatment (Youth)	N/A	08/21/2020	8/21/2020	\$488,984	\$572,896	3859 Martin Way East	Olympia	98506
19-21	Peninsula Community Health Services	Peninsula Comm. Health Services Behavioral Health	Direct Appropriation	Outpatient Treatment	N/A	10/30/2020	10/30/2020	\$1,666,000	\$1,996,500	320 South Kitsap Blvd	Port Orchard	98366
19-21	Consejo Counseling and Referral Service	Behavioral Health Facility	Children and Minor Youth	Outpatient Treatment (Youth)	N/A	03/15/2021	04/01/2021	\$1,960,000	\$2,000,000	723 SW 10th St	Renton	98057
19-21	HealthPoint	HealthPoint Behavioral Health Expansion (Auburn)	Direct Appropriation	Outpatient Treatment	N/A	03/01/2021	04/15/2021	\$1,009,400	\$2,665,000	126 Auburn Ave	Renton	98057

Biennium	Grantee Name	Project Title	Funding Category	Facility Type	Beds	Construction Completion Date	Facility Opening Date	Commerce Award Amount	Total Project Cost	Facility Address	Facility City	Facility Zip Code
19-21	Downtown Emergency Service Center	DESC Health Clinic	Direct Appropriation	Outpatient Treatment	N/A	2/1/2022	2/1/2022	\$5,950,000	\$21,756,635	1923 22nd Ave South	Seattle	98114
19-21	Sea Mar Community Health Centers	Sea Mar Community Health Centers Seattle BH	Direct Appropriation	Outpatient Treatment	N/A	11/25/2019	12/16/2019	\$363,580	\$363,580	8801 14th Ave S	Seattle	98108
19-21	Jamestown S'Klallam Tribe	Jamestown S'Klallam Tribe Medication Assisted Treatment Facility	Direct Appropriation	Outpatient Treatment (Opioids)	N/A	09/01/2021	09/01/2021	\$7,150,000	\$11,275,260	526 S Ninth Ave	Sequim	98382
19-21	Excelsior	Youth Outpatient Services	Children and Minor Youth	Outpatient Treatment (Youth)	N/A	06/30/2021	07/01/2021	\$1,960,000	\$2,089,174	3754 W. Indian Trail Road	Spokane	99208
19-21	CHAS Health	CHAS Spokane Behavioral Health	Direct Appropriation	Outpatient Treatment	N/A	3/9/2020	3/9/2020	\$392,000	\$889,479	3919 N Maple St	Spokane	99205
19-21	Excelsior	Regional Need Capacity Grant	Regional Needs	Outpatient Treatment (Youth)	N/A	4/1/2021	4/1/2021	\$1,960,000	\$2,050,084	3754 W. Indian Trail Rd.	Spokane	99026

Biennium	Grantee Name	Project Title	Funding Category	Facility Type	Beds	Construction Completion Date	Facility Opening Date	Commerce Award Amount	Total Project Cost	Facility Address	Facility City	Facility Zip Code
19-21	Healing Lodge of the Seven Nations	Healing Lodge of the Seven Nations - Facility for Youth	Children and Minor Youth	Outpatient Treatment (Youth)	N/A	12/31/2020	12/31/2020	\$1,960,000	\$5,478,480	5600 East 8th Avenue	Spokane Valley	99212
19-21	Educational Service District 112	Mental Health Center	Children and Minor Youth	Outpatient Treatment (Youth)	N/A	1/1/2021	1/1/2021	\$1,960,000	\$1,960,000	NE 4th and SE Olympia Drive	Vancouver	98684
19-21	Serenity Point Counseling Services, LLC	Facility and Community Providers to Increase Behavioral Health Services	Children and Minor Youth	Outpatient Treatment (Youth)	N/A	7/15/2020	8/3/2020	\$906,451	\$1,106,451	410 S Wilbur Ave.	Walla Walla	99632
19-21	Virginia Mason Memorial Hospital	Children's Village Behavioral Health Expansion	Regional Needs	Outpatient Treatment (Youth)	N/A	12/1/2022	12/1/2022	\$1,794,397	\$7,504,399	3801 Kern Road	Yakima	98902
19-21	Yakima Valley Farm Workers Clinic	Yakima Valley Farm Workers Clinic	Children and Minor Youth	Outpatient Treatment (Youth)	N/A	08/31/2021	09/01/2021	\$1,960,000	\$2,566,039	915 E Mead Ave	Yakima	98903

Biennium	Grantee Name	Project Title	Funding Category	Facility Type	Beds	Construction Completion Date	Facility Opening Date	Commerce Award Amount	Total Project Cost	Facility Address	Facility City	Facility Zip Code
19-21	Yakima Valley Farm Workers Clinic	BHS 12th Avenue Expansion	Direct Appropriation	Outpatient Treatment	N/A	03/01/2019	03/01/2019	\$302,820	\$309,000	307 S. 12th Ave. Unit 1	Yakima	98903
19-21	Yakima Valley Farm Workers Clinic	YVFWC Children's Village	Direct Appropriation	Outpatient Treatment (Youth)	N/A	4/4/2021	4/4/2021	\$980,000	\$1,372,407	3801 Kern Road	Yakima	98902

Substance Use Disorder Treatment

Biennium	Grantee Name	Project Title	Funding Category	Facility Type	Beds	Construction Completion Date	Facility Opening Date	Commerce Award Amount	Total Project Cost	Facility Address	Facility City	Facility Zip Code
17-19	Lifeline Connections	Acute Detox in Grays Harbor County	Acute Detox Treatment	Withdrawal Management	14	12/31/2021	03/31/2022	\$1,298,499	\$1,338,659	TBD	Aberdeen	98520
19-21	Holman Recovery Center /Grandview Homes	Holman Recovery Center /Grandview Homes	Regional Needs	Substance Abuse Treatment	36	5/1/2021	6/1/2021	\$749,700	\$4,240,000	16400 Smokey Point Blvd	Arlington	98223
19-21	Lummi Nation	Lummi Nation Detox Facility	Secure Withdrawal Management and Stabilization	Secure Withdrawal Management and Stabilization	16	12/1/2021	12/1/2021	\$1,960,000	\$4,750,000	2604 Kwina Road	Bellingham	98226
17-19	Whatcom County	Bellingham Acute Detox Facility	Direct Appropriation	Withdrawal Management	16	10/1/2020	11/1/2020	\$1,950,000	\$5,823,024	2030 Division Street	Bellingham	98226
19-21	Navos	Sunstone Youth Inpatient Facility Upgrade	Children and Minor Youth	Secure Withdrawal Management and Stabilization (Youth)	12	09/01/2019	02/01/2020	\$1,054,163	\$1,075,677	1033 SW 152nd St.	Burien	98166

Biennium	Grantee Name	Project Title	Funding Category	Facility Type	Beds	Construction Completion Date	Facility Opening Date	Commerce Award Amount	Total Project Cost	Facility Address	Facility City	Facility Zip Code
19-21	Cascade Mental Health	Detox /Inpatient SUD Building (Centralia)	Direct Appropriation	Withdrawal Management	16	04/30/2023	04/30/2023	\$735,000	\$9,000,000	W Reynolds Ave	Centralia	98531
15-17	American Behavioral Health - Chehalis	CBHB 24-bed Secure Subacute Detox Center	State Hospital Diversion	Secure Withdrawal Management and Stabilization	24	1/1/2017	1/1/2017	\$755,130	\$1,100,000	SE 500 Washington Ave	Chehalis	98532
19-21	Evergreen Recovery Centers	Evergreen RC Addiction Treatment Facility	Direct Appropriation	Substance Abuse Treatment	32	11/1/2021	TBD	\$1,960,000	\$6,000,000	TBD	Everett	98201
19-21	Snohomish County (was NSBHO)	North Sound SUD Treatment Facility (Everett)	Direct Appropriation	Substance Abuse Treatment	32	6/30/2021	7/1/2021	\$1,470,000	\$17,561,792	2801 10th Street	Everett	98201
17-19	Snohomish County (was NSBHO)	North Sound Behavioral Health Treatment Center Remodel	Direct Appropriation	Substance Abuse Treatment	32	06/30/2021	07/01/2021	\$4,950,000	\$7,500,000	2801 10th Street	Everett	98201

Biennium	Grantee Name	Project Title	Funding Category	Facility Type	Beds	Construction Completion Date	Facility Opening Date	Commerce Award Amount	Total Project Cost	Facility Address	Facility City	Facility Zip Code
17-19	Snohomish County (was NSBHO)	North Sound Behavioral Health Treatment Center Remodel	Direct Appropriation	Substance Abuse Treatment	32	06/30/2021	07/01/2021	\$4,950,000	\$7,500,000	2801 10th Street	Everett	98201
19-21	Confederated Tribes of the Colville Indian Res.	Colville SUD Facility	Direct Appropriation	Substance Abuse Treatment	48	05/13/2021	08/13/2021	\$4,473,000	\$18,272,131	11614 South HWY 21	Keller	99140
15-17	Valley Cities Counseling and Consultation	Valley Cities Recovery Center 16-Bed E&T and 16-Bed Secure Substance Abuse and Detox Unit Facility	Direct Appropriation	Evaluation and Treatment / Secure Withdrawal Management and Stabilization	32	05/31/2019	5/31/2019	\$7,000,000	\$9,421,366	505 Washington Avenue S	Kent	98032
15-17	Columbia Wellness - Cowlitz County	Community Behavioral Health Beds Program	State Hospital Diversion	Withdrawal Management	16	02/05/2018	02/14/2018	\$2,000,000	\$6,332,139	720 14th Avenue	Longview	98632
17-19	Good Samaritan Foundation	START Inpatient Unit	Acute Detox Treatment	Withdrawal Management	18	12/31/2020	01/01/2021	\$641,501	\$51,256,042	401 15th Avenue SE	Puyallup	98372

Biennium	Grantee Name	Project Title	Funding Category	Facility Type	Beds	Construction Completion Date	Facility Opening Date	Commerce Award Amount	Total Project Cost	Facility Address	Facility City	Facility Zip Code
17-19	Evergreen Treatment Services	Evergreen Treatment Services	Direct Appropriation	Substance Abuse Treatment (Opioids)	N/A	11/1/2021	12/1/2021	\$2,950,000	\$9,275,000	1700 Airport Way S	Seattle	98134
17-19	Valley Cities Behavioral Health	Valley Cities Recovery Place Seattle	Direct Appropriation	Substance Abuse Treatment	72	10/1/2017	11/1/2017	\$1,950,000	\$12,472,542	1701 18th Avenue S	Seattle	98144
17-19	Skagit County	North Sound Stabilization Campus - Sedro Woolley	Direct Appropriation	Evaluation and Treatment / Secure Withdrawal Management and Stabilization (Pre-Design)	40	09/01/2021	12/01/2021	\$1,503,500	\$1,503,500	1420 State Route 20	Sedro Woolley	98284
17-19	Excelsior Youth Centers	Secure Withdrawal Management and Stabilization	Secure Detox Treatment	Secure Withdrawal Management and Stabilization (Youth)	8	03/23/2020	9/15/2020	\$484,999	\$634,454	3910 W. Indian Trail Rd.	Spokane	99208
17-19	Lifeline Connections	Secure Detox Facility in Clark County	Direct Appropriation	Secure Withdrawal Management and Stabilization	20	12/31/2020	02/01/2021	\$1,104,977	\$2,545,721	5197 Northwest Lower River Road	Vancouver	98660

Biennium	Grantee Name	Project Title	Funding Category	Facility Type	Beds	Construction Completion Date	Facility Opening Date	Commerce Award Amount	Total Project Cost	Facility Address	Facility City	Facility Zip Code
17-19	Lifeline Connections	Secure Detox Facility in Clark County	Secure Detox Treatment	Secure Withdrawal Management and Stabilization	20	12/31/2020	02/01/2021	\$1,440,744	\$2,545,721	5197 North-west Lower River Road	Vancouver	98660
19-21	Comprehensive Healthcare	Comprehensive Healthcare Secure Detox	Secure Withdrawal Management and Stabilization	Secure Withdrawal Management and Stabilization	16	2/1/2022	3/1/2022	\$1,960,000	\$6,971,579	1520 Kelly Place	Walla Walla	99362
19-21	The Center for Alcohol & Drug Treatment	Chelan SUD Design	Direct Appropriation	Substance Abuse Treatment (Pre-Design)	N/A	12/31/2019	3/1/2020	\$201,880	\$201,880	327 Okanogan Ave	Wenatchee	98801

Other Behavioral Health

Biennium	Grantee Name	Project Title	Funding Category	Facility Type	Beds	Construction Completion Date	Facility Opening Date	Commerce Award Amount	Total Project Cost	Facility Address	Facility City	Facility Zip Code
17-19	Opportunity Council	Opportunity Council - Bellingham Recovery House	Psychiatric Residential Treatment	Residential Treatment	16	10/30/2020	11/02/2020	\$970,000	\$1,556,500	1209 & 1211 Girard Street	Bellingham	98225
17-19	Navos	Increasing Bed Capacity at Sunstone Youth Treatment Center	Children and Minor Youth	Residential Treatment (Youth)	5	11/15/2018	11/15/2018	\$847,042	\$873,239	1033 SW152nd St	Burien	98166
19-21	Confederated Tribe of the Colville Reservation Health and Human Services	Colville Tribe Substance Abuse Treatment Center Respite Homes	Peer Respite	Peer Respite	32	7/1/2022	7/1/2022	\$1,960,000	\$4,333,220	11614 Highway 21 S	Keller	99140
13-15	Fairfax Behavioral Health	Fairfax Behavioral Health	Community Mental Health Beds	Psychiatric Hospital Beds	14	2/1/2016	2/1/2016	\$880,000	\$1,046,307	10200 NE 132nd St	Kirkland	98034
19-21	CORE Health	Building acquisition for youth support center	Children and Minor Youth	Residential Treatment (Youth)	4	11/30/2020	12/01/2020	\$1,960,000	\$2,000,000	1400 Commerce Ave	Longview	98632

Biennium	Grantee Name	Project Title	Funding Category	Facility Type	Beds	Construction Completion Date	Facility Opening Date	Commerce Award Amount	Total Project Cost	Facility Address	Facility City	Facility Zip Code
19-21	Lucid Living	Lucid Living Mental Health Peer Respite Center: SafetyNet	Peer Respite	Peer Respite	4	9/1/2020	9/1/2020	\$588,258	\$600,263	5405 Lemon Rd. NE	Olympia	98506
17-19	Sea Mar Community Health Centers	Sea Mar Geriatric Diversion from Western State Hospital	Direct Appropriation	Psychiatric Hospital Beds	16	01/01/2020	10/01/2020	\$485,000	\$1,000,000	1040 S Henderson St	Seattle	98108
15-17	Swedish Medical Center	Swedish Ballard Psychiatric Unit	Direct Appropriation	Psychiatric Hospital Beds	22	5/1/2016	6/1/2016	\$3,000,000	\$11,199,175	5300 Tallman Ave NW	Seattle	98107
17-19	Thurston Mason BHO	Mason Long Term Residential Treatment Facility/ Phase Two	Community Behavioral Health	Residential Treatment	16	8/10/2020	08/24/2020	\$391,957	\$2,557,000	307 West Cota Street	Shelton	98584
17-19	Thurston Mason BHO	Mason Long Term Residential Treatment Facility/ Phase Two	Psychiatric Residential Treatment	Residential Treatment	16	8/10/2020	08/24/2020	\$1,552,000	\$2,557,000	307 West Cota Street	Shelton	98584
19-21	Excelsior	Increase Behavioral Health for Youth	Children and Minor Youth	Residential Treatment (Youth)	8	08/01/2021	08/15/2021	\$398,860	\$425,500	TBD	Spokane	99208

Biennium	Grantee Name	Project Title	Funding Category	Facility Type	Beds	Construction Completion Date	Facility Opening Date	Commerce Award Amount	Total Project Cost	Facility Address	Facility City	Facility Zip Code
19-21	Passages Family Support	Passages Family Support Peer Respite	Peer Respite	Peer Respite	4	4/1/2021	4/1/2021	\$1,220,100	\$1,245,000	1700 S. Assembly St, Ste 300	Spokane	99224
17-19	Excelsior Youth Centers	Excelsior Youth Center	Children and Minor Youth	Residential Treatment (Youth)	16	03/23/2020	06/24/2020	\$414,436	\$2,310,860	3910 W. Indian Trail Road	Spokane	99208
17-19	Excelsior Youth Centers	Excelsior Youth Center	Community Behavioral Health	Residential Treatment (Youth)	16	03/23/2020	06/24/2020	\$1,537,997	\$2,310,860	3910 W. Indian Trail Road	Spokane	99208
15-17	Excelsior Youth Centers	Hospital Diversion	Acute and Residential Treatment	Residential Treatment (Youth)	16	03/23/2020	06/24/2020	\$240,881	\$ 2,501,078	3910 W. Indian Trail Rd.	Spokane	99208
15-17	Excelsior Youth Centers	Hospital Diversion	State Hospital Diversion	Residential Treatment (Youth)	16	03/23/2020	06/24/2020	\$1,759,119	\$ 2,501,078	3910 W. Indian Trail Rd.	Spokane	99208
17-19	Spokane Treatment and Recovery Services	STARS Integrated Health	Psychiatric Residential Treatment	Residential Treatment	64	12/01/2021	02/01/2022	\$1,950,000	\$2,229,780	13220 E Nora Ave.	Spokane Valley	99216
17-19	Comprehensive Life Resources	Pearl Street CLIP Expansion	Children and Minor Youth	Residential Treatment (Youth)	13	07/30/2020	08/01/2020	\$1,950,000	\$11,026,000	1201 S. Proctor Street	Tacoma	98405

Biennium	Grantee Name	Project Title	Funding Category	Facility Type	Beds	Construction Completion Date	Facility Opening Date	Commerce Award Amount	Total Project Cost	Facility Address	Facility City	Facility Zip Code
17-19	MultiCare-Franciscan	Wellfound Behavioral Health	Direct Appropriation	Psychiatric Hospital Beds	120	05/07/2019	05/07/2019	\$2,950,000	\$39,051,235	3402 S. 19th Street	Tacoma	98405
15-17	Multicare-Franciscan Joint Venture	Alliance for South Sound Health	Direct Appropriation	Psychiatric Hospital Beds	120	04/30/2019	05/07/2019	\$5,000,000	\$45,267,903	1901 South Union Ave	Tacoma	98405
19-21	A+K Ingenuity LLC	A+K Ingenuity Foundational Youth Services	Children and Minor Youth	Residential Treatment (Youth)	8	3/2/2020	6/1/2020	\$389,060	\$397,000	9815 NE 86th St.	Vancouver	98662

Bibliography

Transforming Washington's Behavioral Health Care System | Washington Governor Jay Inslee. (2018). Retrieved from

https://www.governor.wa.gov/sites/default/files/Behavioral_Health_policyBrief_Final.pdf?utm_medium=email&utm_source=govdelivery

Overall Ranking | Mental Health America. (2020). Retrieved from <https://www.mhanational.org/issues/ranking-states>

Behavioral Health Barometer | Substance Abuse and Mental Health Services Administration. (2019). Retrieved from <https://store.samhsa.gov/sites/default/files/d7/priv/washington-bh-barometervolume5-sma19-baro-17-us.pdf>

The State of Mental Health in America | Mental Health America. (2020). Retrieved from <https://www.mhanational.org/issues/state-mental-health-america#Key>

Statewide High-Level Analysis of Forecasted Behavioral Health Impacts from COVID-19 | Washington State Health Care Authority. (2020). Retrieved from <https://www.hca.wa.gov/assets/program/covid-19-statewide-summary-forecast-of-bh-impacts-20200624.pdf>

Mental Health, Substance Use, and Suicidal Ideation during the COVID-19 Pandemic | Centers for Disease Control and Prevention. (2020). Retrieved from <https://www.cdc.gov/mmwr/volumes/69/wr/mm6932a1.htm>

RCW 71.05.020. Retrieved from <https://app.leg.wa.gov/rcw/default.aspx?cite=71.05.020>

RCW 71.24.025. Retrieved from <https://app.leg.wa.gov/rcw/default.aspx?cite=71.24.025>

RCW 70.97.101. Retrieved from <https://app.leg.wa.gov/rcw/default.aspx?cite=70.97.010>