

**Washington State
Community Economic
Revitalization Board**



Rural Broadband Program

2018 LEGISLATIVE REPORT

2017-19 Biennium



Table of Contents

Message from the Chair	3
Introduction to CERB	4
Program Opportunities.....	5
Program Outreach	7
Community and Economic Development.....	10
Awarded Projects	12
Project Highlights: Port of Skagit County.....	14
Project Life Cycle	15
Feedback from Communities	16
ATNI Resolution	18
CERB Members.....	Back Cover

Rural Broadband Proviso Language: ESSB 6095 H-5170.3 Section 1008
CERB Enabling Legislation: RCW 43.160

Washington State Department of Commerce

1011 Plum Street SE
PO Box 42525
Olympia, WA 98504

Brian Bonlender
Director

Mark Barkley
Assistant Director
Local Government Division

Cecilia Gardener
Executive Director
Board Units

Janea Delk
Program Director & Tribal Liaison
Community Economic Revitalization Board
360.725.3151
Janea.Eddy@commerce.wa.gov



INVESTING IN WASHINGTON'S ECONOMIC FUTURE

Community Economic Revitalization Board

1011 Plum Street SE • PO Box 42525 • Olympia, WA 98504-2525 • (360) 725-3151

I am pleased to introduce the 2018 Rural Broadband Legislative Report for the Washington State Community Economic Revitalization Board (CERB). This report highlights activities and outcomes from the 2018 calendar year.

In March 2018, the supplemental capital budget passed (ESSB 6095 H-5170.3). Section 1008 included the CERB Administered Rural Broadband Program. The proviso language included a \$10 million appropriation for fiscal year 2019.

The Rural Broadband Program has changed the conversation for many of our rural communities and Tribes. This program allows communities and Tribes to build and own the broadband infrastructure, and to collaborate with Independent Service Providers (ISPs) to provide retail service, which will allow more options for the end-user at a lower cost.

Since this program has changed the conversation, CERB has seen many communities come forward for planning projects for broadband. These planning projects are building a pipeline for future construction projects. Even more exciting, these conversations are bringing everyone to the table for collaboration: counties, cities, ports, PUDs, special purpose districts, Tribes, and ISPs.

Because this is a new program, the CERB Policy Committee and staff worked diligently designing policies, procedures, program materials, and conducting stakeholder outreach. The supplemental capital budget was passed on March 9, and CERB approved the program's policies, procedures, and materials on May 17. The accelerated timeline allowed staff to be out in the communities conducting workshops, attending speaking engagements, giving technical assistance, and educating communities and Tribes about the new Rural Broadband Program. Between May and June, staff spoke at 20 individual workshops and speaking engagements, reaching over 700 community members.

The first round of projects were awarded in September 2018 with far reaching impact:

- 3 Projects were awarded - \$2,816,649 CERB Investment
- The projects reached into 13 Communities
- 2,427 Connections are planned from the projects
- Cost per connection: \$1,161
- 100% Increase in Internet Speed
- Estimated increase from 6 to 17 ISPs

The Rural Broadband Program aligns with CERB's application and meeting date cycle. Applications are accepted on a first-come, first-served basis, and the Board meets every two months to review projects.

CERB members are committed Washington citizens and professionals with a passion for economic development. The investments that CERB has made, and the return on these investments, are a testament to this dedication. On behalf of CERB, I thank you for your continued support of this essential resource for growing Washington's economy.

Randy Hayden

Community Economic Revitalization Board Chair

Introduction to CERB

COMMUNITY ECONOMIC REVITALIZATION BOARD

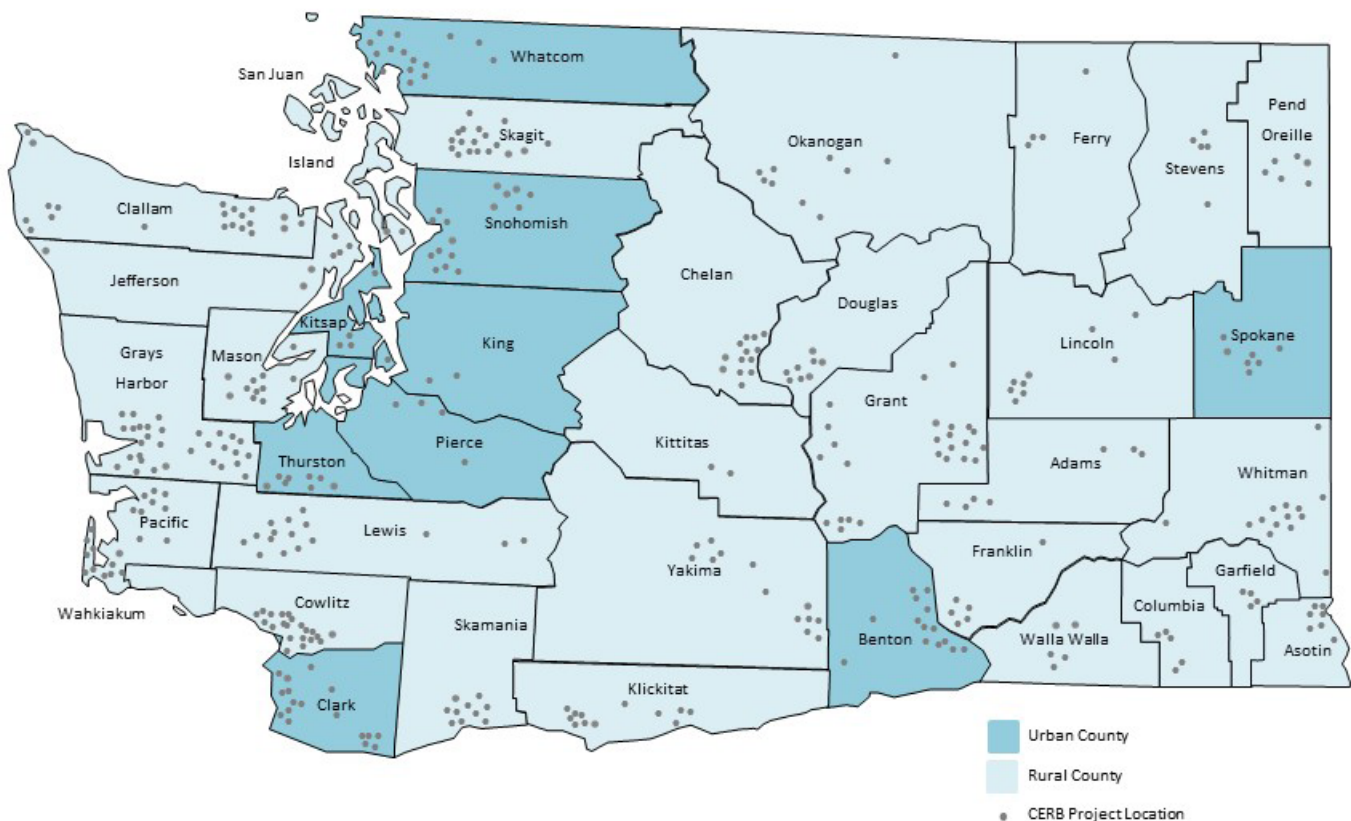
The Community Economic Revitalization Board (CERB) is a unique statewide economic development resource. CERB assistance is valued because it helps communities:

- Respond rapidly to immediate business siting and expansion needs
- Build feasible industrial sites for future business development
- Target expansions in manufacturing, food processing, assembly, warehousing, industrial distribution, advanced technology, and other key sectors
- Spur creation and retention of higher wage jobs

Since 1982, CERB has encouraged new development and expansion in areas where growth is desired. The Legislature created CERB to provide low-interest loans (and in unique circumstances, grants) to help finance the local public economic development infrastructure necessary to develop or retain stable business and industrial activity. These improvements include industrial water, general-purpose industrial buildings and port facilities, sanitary and storm sewers, industrial wastewater treatment facilities, railroad spurs, telecommunications, electricity, natural gas, roads, and bridges. CERB investments have been made in 37 counties since the program began.

The 20-member Board represents private and public sectors from across the state, as designated in statute. The Board sets policy and selects projects to receive CERB financing assistance. Administrative support to CERB is provided within the Local Government Division of the Department of Commerce. CERB's statutory authority is codified in Chapter 43.160 RCW.

CERB Funded Projects in Washington State, 1982-2018



Program Objective

To make broadband resources more accessible to rural underserved communities. The Community Economic Revitalization Board (CERB) is authorized to make rural broadband loans to **local governments** and **federally recognized Indian tribes** financing the cost to build infrastructure to provide high-speed, open-access broadband service, to rural and underserved communities, for the purpose of community and economic development.

Program Overview

For projects that are located in a rural community, as defined by the board, or a rural county; that encourages, fosters, develops, and improves broadband within the state in order to:

- Drive job creation, promote innovation, and expand markets for local businesses; or
- Serve the ongoing and growing needs of local education systems, health care systems, public safety systems, industries and businesses, governmental operations, and citizens; and
- Improve accessibility for underserved communities and populations.

Eligibility

Applicants

Washington counties, cities, towns, port districts, special purpose districts, municipal corporations, quasi-municipal corporations, and federally recognized Indian tribes are eligible for CERB funding.

Projects

CERB funds¹ construction projects² that have a nexus to positive community and economic development outcomes. In order to

measure the strength of a project, CERB requires a 25% cash match be provided; this demonstrates commitment from the applicant. In addition, to ensure local support for the project, the applicant must secure a letter of support from their Associate Development Organization. An applicant must have a committed Internet Service Provider (ISP) at the time of application.

Public Infrastructure

Including, but not limited to, for the purpose of broadband infrastructure:

- Cable Modem
- Fiber
- Wireless (fixed wireless, wifi)
- 4G Mobile Wireless
- Broadband over Powerlines (BPL)
- Microwave

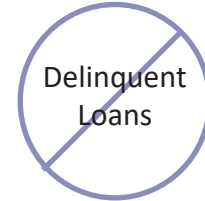
CERB DOES NOT INVEST IN

CERB does not invest in projects if:

- The project is located outside the jurisdiction of the applicant (local government or federally recognized Indian tribe).
- The primary purpose of the project is to facilitate or promote a retail shopping development or expansion, or gambling.
- Evidence exists that the project would result in a development or expansion that would displace existing jobs in any other communities in the state.
- The project is for equipment or facilities which would enable a public entity to provide retail, telecommunications services, or services that the entity is not authorized by statute to provide.
- The project is for the deployment of publicly-owned telecommunication network infrastructure ("backbone") solely for the sake of creating competitive, publicly-owned telecommunication network infrastructure.

Responsible Stewardship

CERB is a responsible steward of public funds. As a result of the Board's prudent decisions, the program has no delinquent loan contracts.



¹50% of CERB's biennial appropriation may be used for grants.

²The Rural Broadband Program is for construction projects ONLY. Applicants can apply for broadband planning projects through CERB's planning program.

³If the applicant meets additional requirements, the match amount may be reduced.

Program Opportunities

CERB Investment and Returns

CERB will track the following outcomes:

- Number of connections: households, businesses, and anchor institutions.
- Number of ISPs available for consumers.
- Internet speed being offered to consumers.

Staff Assistance

CERB staff delivers program management, contract management, Board support, community and economic development for local projects, and works with applicants to develop and present projects for CERB review.

Technical assistance—Staff help each applicant identify project barriers, evaluate project feasibility, and develop funding and implementation strategies when the project is ready to proceed. Many times this involves convening a tech team with the applicant and other funders, to develop a project action plan.

Project advocacy—Staff prepare a comprehensive analysis of each project with recommendations to CERB. This analysis identifies the relative community and economic benefits of the project to the local community, the project dynamics, and areas of merit and/or controversy. The analysis of the project’s community and economic development goals and outcomes includes specific projections of the number of connections (households, businesses, and anchor institutions), speed service to the

end users, and number of ISPs available to the end user.

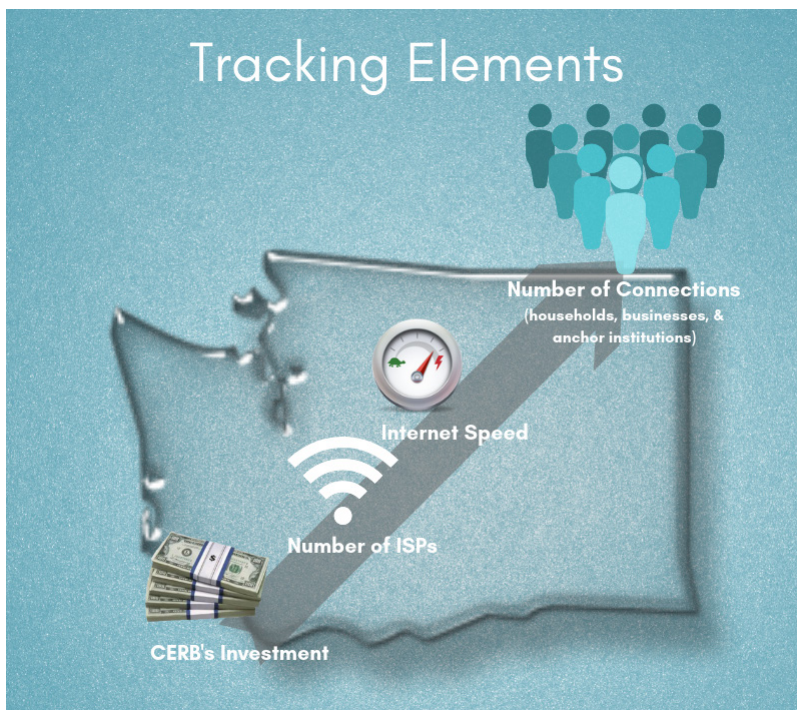
Project monitoring—Staff help local governments work out emergent problems during contract development and project implementation. Following construction of the public infrastructure project, project outcomes are tracked by CERB staff for five years. These outcomes include number of connections (households, businesses, and anchor institutions), speed service to the end users, and number of ISPs available to the end user. This tracking process links CERB investment to actual community and economic development outcomes.

Key Successes

In March 2018, the Supplemental Capital Budget passed, which included the CERB Administered Rural Broadband Program. This proviso language included a \$10 million appropriation for FY 2019.

Timeline:

- **March - April:** CERB policy committee designed program policies, procedures, and program materials.
- **March - April:** Staff conducted Stakeholder Outreach Meetings (21 Entities)
- **May:** CERB approved the Rural Broadband Program policies, procedures, and program materials.
- **May 21:** 1st Rural Broadband application cycle opened.
- **May - June:** CERB staff held six rural broadband workshops across the state, and also took part in many speaking events to educate about the Rural Broadband Program.
- **July 16:** 1st due date for Rural Broadband applications.
- **September 20:** CERB approved three Rural Broadband construction projects - \$2.8 million.



Stakeholder Outreach

While working with CERB's Policy Committee drafting the program policies, procedures, and materials, staff met with several stakeholder groups to get feedback and comments regarding the Rural Broadband Program.



Department of Commerce



Washington State - Office of the
Chief Information Officer

WASHINGTON



UTILITIES AND TRANSPORTATION
COMMISSION



Washington State
Association of Counties
The Voice of Washington Counties



*Governor Jay Inslee and Janea Delk, Program Director
Promeroy, WA Rural Broadband Listening Session & CERB Workshop*



Come and learn
about CERB's NEW
Rural Broadband
Program

Rural broadband loans and grants to **local governments** and **federally recognized Indian tribes** to build infrastructure to provide high-speed, open access broadband service, to rural underserved communities for the purpose of community and economic development.



Upcoming WORKSHOPS

June 4 - Sequim

June 5 - South Bend

June 11 - Ephrata

June 12 - Newport

June 13 - Pomeroy

For more information:

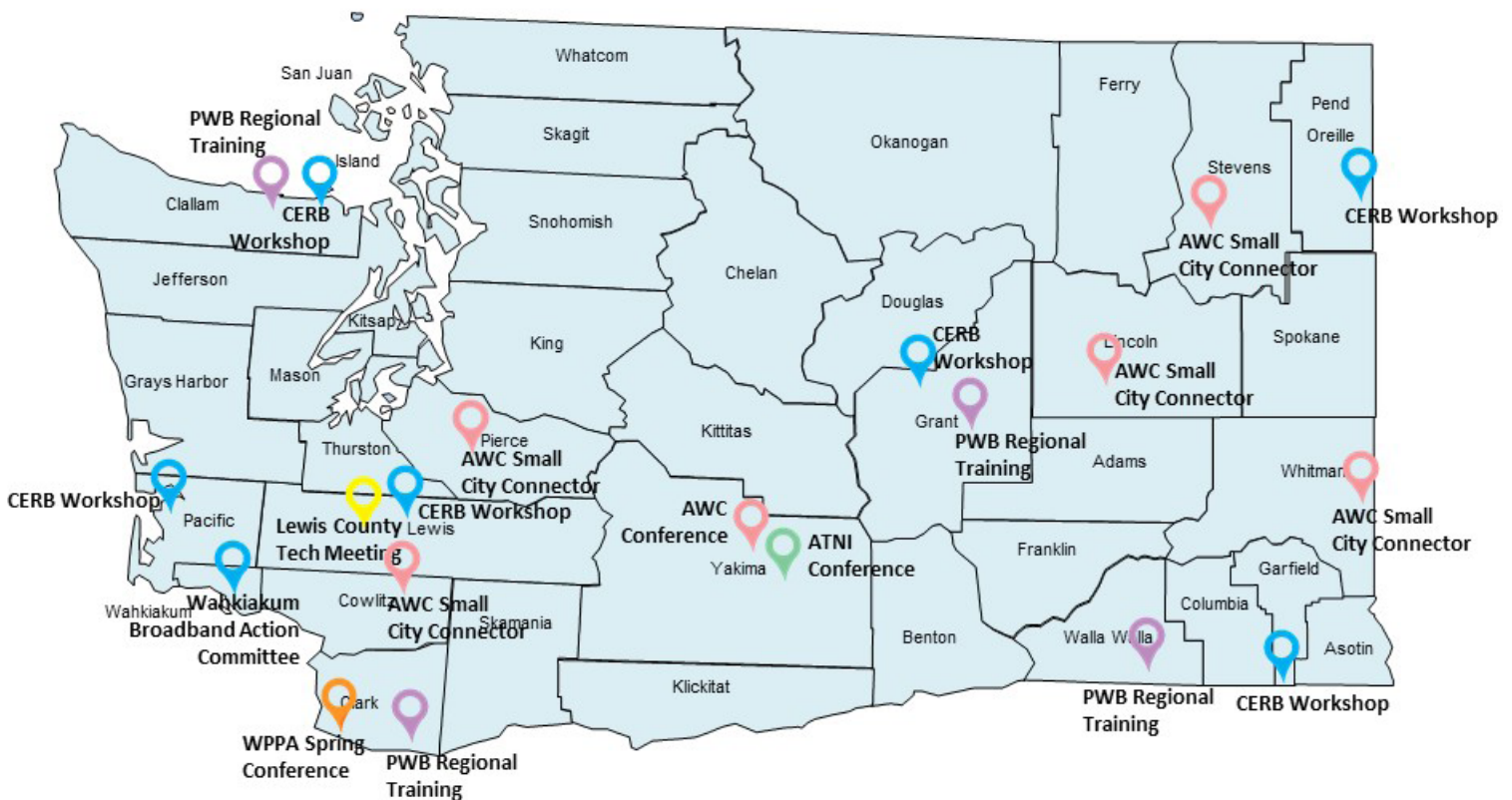
www.commerce.wa.gov/cerb

Community Outreach

After CERB approved the Rural Broadband Program policies, procedures, and materials; staff held 7 Rural Broadband Workshops across the state. Staff also presented at 13 other events across the state between May and June. Through this outreach, staff was able to engage with more than 700 community members about the Rural Broadband Program.

Staff continues to do presentations at conferences, local events, and Legislative Committee work sessions to educate about the Rural Broadband Program. Most recently staff presented at:

- Olympic Peninsula Broadband Convening
- Senate Economic Development & International Trade Committee work session
- House Local Government Committee work session
- Washington Public Ports Association - Small Ports Conference
- Infrastructure Assistance Coordinating Council (IACC) Conference
- IACC Rural Broadband Tech Team - Okanogan and Stevens County



CERB Workshops Attendees	
• Cities/Towns	17
• Counties	17
• State/Fed	24
• PUDs	15
• Ports	17
• Tribes	16
• EDCs	13
• ISPs	15
• Library	7
• School/Univ	6
• Private/Consultant	18

-  Association of Washington Cities Events
-  CERB Workshops
-  Public Works Board Regional Trainings
-  Affiliated Tribes of Northwest Indians Conference
-  Washington Public Ports Association Conference
-  Lewis County Technology Meeting

Community and Economic Development

With CERB's focus on outreach and education, CERB has seen an increase in planning grants. Even before the Rural Broadband Program, communities were using CERB's planning grants to plan for broadband projects.

As a result of the planning studies, CERB has a built in project pipeline for future rural broadband projects. Not all projects will be found feasible for construction, and not all construction projects will be funded by CERB. However, there is a potential that two-thirds of the planning projects would come back to CERB for construction funding.

If those 8 projects came back to CERB for construction funds, at the average of \$938,883 a project, project potential is the following (see pipeline):

- \$7.8 Million CERB Funds
- 6,724 Connections
- Average of 29 NEW ISPs in communities
- 100% Increased Internet Speed

CERB Funded Broadband Planning Projects 2014-2018

Approval Date	County	Applicant	Project Title	CERB Grant	Match	Project Total
9/18/2014	Clallam	Makah Tribe	Makah Broadband Project Feasibility Study	\$46,875	\$18,938	\$65,813
1/15/2015	Clallam	Quileute Tribal Council	Quileute Broadband Access Planning	\$45,000	\$15,000	\$60,000
9/15/2016	Clark	Port of Ridgefield	Dark Fiber Optics - Needs Assessment/Feasibility Study	\$50,000	\$50,000	\$100,000
3/16/2017	Jefferson	Hoh Indian Tribe	Hoh Tribe Broadband Feasibility Study	\$37,350	\$37,350	\$74,700
3/16/2017	Skagit	Port of Skagit County	Skagit County Dark Fiber Optic Assessment and Feasibility Study	\$50,000	\$50,000	\$100,000
5/18/2017	Cowlitz	Port of Woodland	Dark Fiber Feasibility and Market Analysis	\$30,000	\$10,000	\$40,000
9/20/2018	Klickitat	City of Goldendale	Goldendale Broadband Plan	\$50,000	\$17,000	\$67,000
9/20/2018	Jefferson	Jefferson County PUD #1	Jefferson County Broadband Infrastructure Expansion Plan	\$50,000	\$17,000	\$67,000
11/15/2018	Whatcom	Lummi Nation	Lummi Community Broadband Roadmap Plan	\$50,000	\$16,667	\$66,667
11/15/2018	Whatcom	Port of Bellingham	Rural Broadband Feasibility Study	\$50,000	\$30,000	\$80,000
				\$459,225	\$261,955	\$721,180

Rural Broadband Pipeline

2014-18: 10 CERB Funded Broadband Planning
Assumption: 2/3's of the original studies could return to CERB for construction
funding at an average of \$938,883 per project.



**8 Construction
Projects**



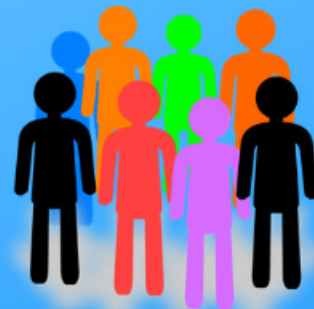
**\$7.8M CERB
Construction Funds**



**100% Increased
Internet Speed**



**Increased Avg of 29
NEW ISPs**



6,724 Connections



Awarded Projects

CERB will track number of connections, number of internet service providers, and the speed of the connection for each project for a period of five years after the construction project is complete. Below are the first three projects awarded by CERB in the Rural Broadband Program. (see project maps)

Mason

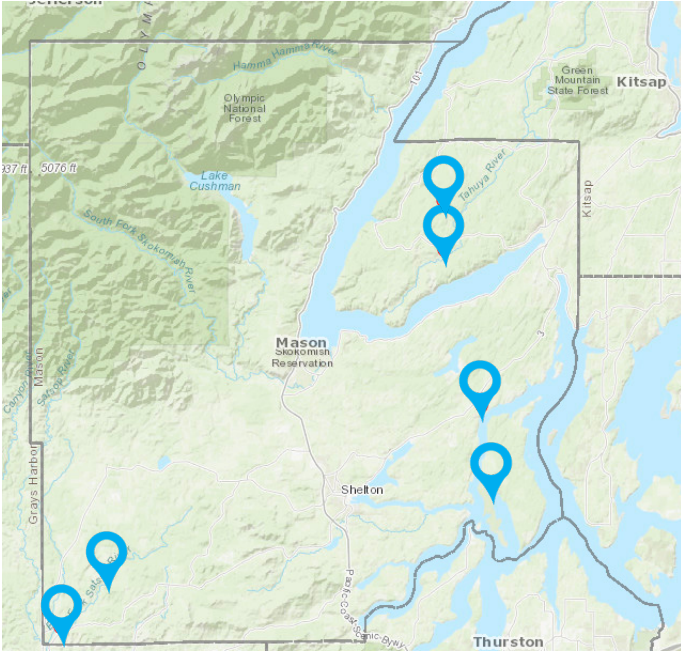
Mason County PUD #3		Project Title:		Mason County Rural Broadband Fiber Expansion		
Awarded	CERB Loan	CERB Grant	TOTAL CERB	Match	Total Project Cost	
9/20/2018	\$408,325	\$408,324	\$816,649	\$150,000	\$966,649	
Current						
Households	Speed	Businesses	Speed	Anchor Institutions	Speed	ISPs
500	<10/1	20	<10/1	3	<10/1	1
Estimates						
Households	Speed	Businesses	Speed	Anchor Institutions	Speed	ISPs
500	1/1G	20	1/1G	3	1/1G	7
Estimated cost per connection			\$1,561			

Skagit

Port of Skagit County		Project Title:		Skagit Community Fiber Optic Backbone Project		
Awarded	CERB Loan	CERB Grant	TOTAL CERB	Match	Total Project Cost	
9/20/2018	\$500,000	\$500,000	\$1,000,000	\$2,300,000	\$3,300,000	
Current						
Households	Speed	Businesses	Speed	Anchor Institutions	Speed	ISPs
337	<25/3	15	<25/3	9	<25/3	2
Estimates						
Households	Speed	Businesses	Speed	Anchor Institutions	Speed	ISPs
337	100/20	15	100/100	9	100/100	4
Estimated cost per connection			\$2,770			

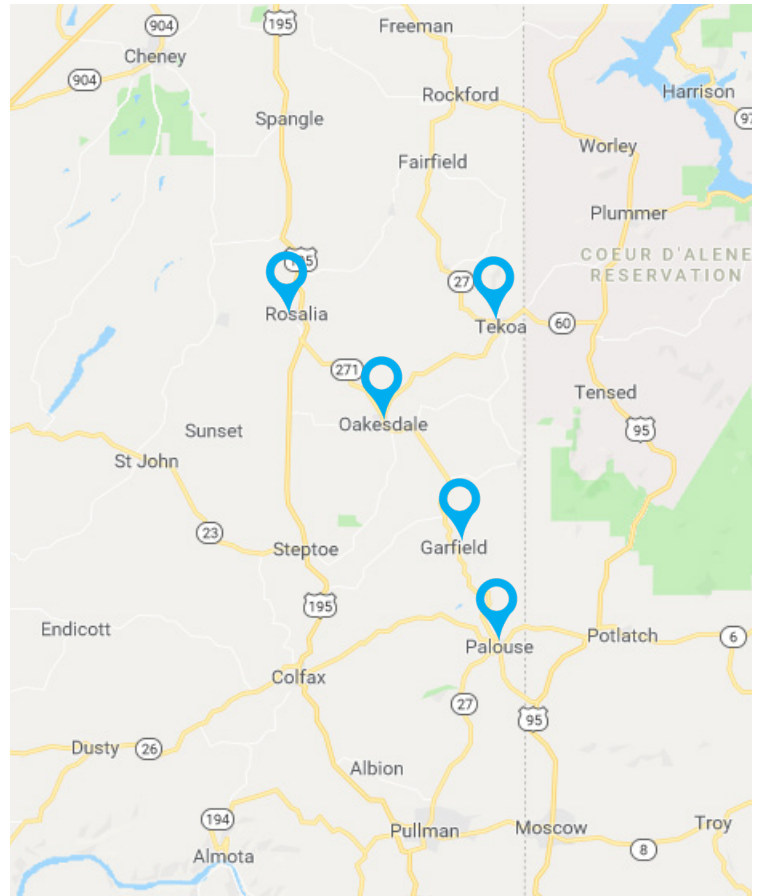
Whitman

Port of Whitman County		Project Title:		Last Mile Fiber Construction Project		
Awarded	CERB Loan	CERB Grant	TOTAL CERB	Match	Total Project Cost	
9/20/2018	\$750,000	\$250,000	\$1,000,000	\$2,000,000	\$3,000,000	
Current						
Households	Speed	Businesses	Speed	Anchor Institutions	Speed	ISPs
1,368	<25/3	150	<25/3	25	<100/20	3
Estimates						
Households	Speed	Businesses	Speed	Anchor Institutions	Speed	ISPs
1,368	1/1G	150	1/1G	25	1/1G	6
Estimated cost per connection			\$648			



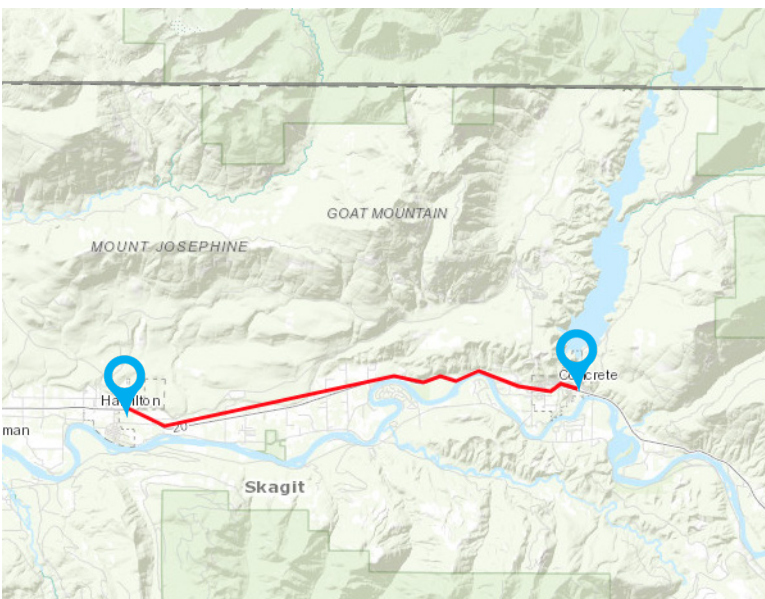
Mason County PUD #3

6 Communities: Tahuya River Valley, Lake Christine, Fish Hatchery Road, Schafer Park, Chapman Road, and Island View



Port of Whitman County

5 Communities: Rosalia, Tekoa, Oakesdale, Garfield, and Palouse



Port of Skagit County

Segment 6: Hamilton to Concrete

Project Highlight - Port of Skagit County



Port of Skagit

In 2017, CERB awarded a \$50,000 grant to the Port of Skagit County for the Skagit County Dark Fiber Optic Assessment and Feasibility Study.

The Port of Skagit County, in partnership with Skagit County and the Economic Development Alliance of Skagit County (EDASC), undertook an effort to study broadband needs in Skagit County. The study identified a lack of affordable, reliable high-speed internet access in rural Skagit County. The plan proposes the development of an open access dark fiber backbone running throughout the county, connecting every major city and town from Anacortes to Concrete at a total estimated construction cost of \$2.8 million.

In June 2018, the Port and Public Utility District No. 1 of Skagit County (Skagit PUD) formed a joint operating entity known as "SkagitNet LLC". SkagitNet will construct and operate the fiber optic network. The network will be constructed in six segments. Currently Segments 1 through 4 are under construction using local funds, including \$2.2 million from

Skagit County 0.09 grants. Segment 5 was completed several years ago by the Skagit PUD and will be included in the SkagitNet system.

In September 2018, CERB awarded a \$500,000 loan and a \$500,000 grant to the Port of Skagit County for the Skagit Community Fiber Optic Backbone Project (segment 6). Construction of segment 6 of the countywide fiber optic backbone will connect the Town of Concrete to the backbone point in the Town of Hamilton. The Port will construct 12.2 miles of fiber optic cable, including aerial and buried elements.

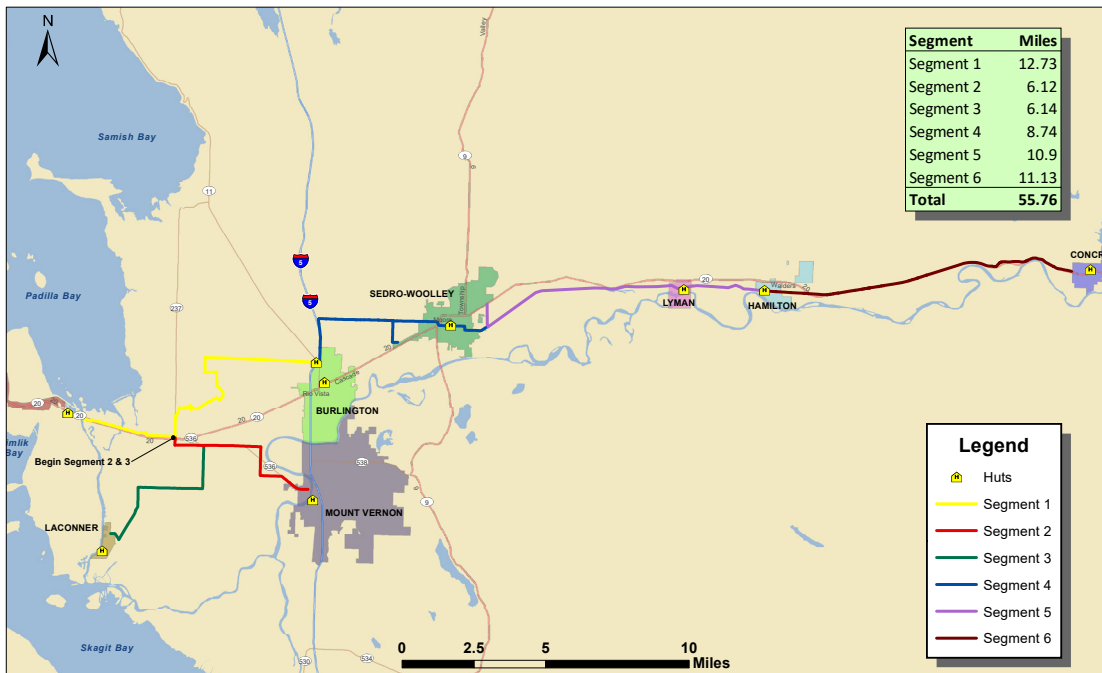
"The Port believes that having multiple, competing, private sector providers will result in a higher level of service at a lower cost."

- Commissioner Dr. Kevin E. Ware
Port of Skagit County

"If we have reliable, high-speed internet access throughout the town that private providers can then tap into and feed into our residences and businesses, then existing businesses will have another tool in their toolbox to perform more efficiently, effectively and rapidly."

- Mayor Jason Miller
City of Concrete

Exhibit A



As an open access, carrier neutral system, multiple internet service providers will be able to compete for services on the network.

While doing outreach for the Rural Broadband program, the question was asked many times how a community would be able to pay for a loan from CERB to build broadband. As with most infrastructure projects, there is a revenue source that will be generated. This will allow the applicant to pay back a loan to CERB and have reserves for operation and maintenance. The applicant determines where the break even point is, during the planning process for the broadband project.

How can a community pay back CERB for broadband construction?



Feedback from Communities

After each of CERB's Rural Broadband Workshop, staff sent out a survey asking for feedback from the attendees. Staff was asked to include and report on the question listed below.

What would you like to share with the Legislature regarding broadband needs in your community?

- *Broadband is the lifeblood of any modern economy no matter the size. Perhaps even more important than transportation.*
- *Rural Eastern Washington is terribly underserved in this area. At this time, this is the most pressing infrastructure need in our community and others like it. I have to go to a coffee shop to access the internet, and the system has crashed at least twice in the last year.*
- *I would be interested to see a summary after they finished their tour of the state. I would think there are going to be a lot of similar issues, particularly for the rural communities. It would be nice if those similar issues were sent out so we could all be moving towards the same goals.*
- *My community of Kettle Falls is underserved and not accurately represented by federal service provider coverage maps.*
- *Broadband is essential for rural communities to keep pace with more populated areas of the state. Both speed and reliability are key factors for residents and businesses living and operating in rural areas.*
- *Broadband access is essential for those in our area to compete in the larger world.*
- *Broadband is extremely important for our community and economic development.*
- *Speeds >3 mbps are still difficult to get outside of the city limits.*
- *Assessment and overall project planning are needed in my area. A project planner to work with the organization staff to figure out what is sufficient, what to plan for, and what the next step should be.*
- *We have many rural areas that have little to no broadband services and will benefit from this opportunity.*
- *The Legislature needs to understand the root causes for lack of broadband access in rural areas is rooted in outdated and flawed policy under the FCC. The current model relies on large populations to make big money as providers, so it leaves out poor areas of the US. We need to provide non-partisan education on broadband community development to the leadership to build consistent policies, but the new CERB program is a good start. Also, the state of WA needs to consolidate the technology programs that benefit communities under one department to ensure coordination.*
- *Broadband is becoming a necessity. From kids needing the Internet to do their schoolwork, to quality of life issues for attracting workers to our community.*
- *My perspective is from a Telco/ISP. We are in the middle of our second fiber build (over existing coax & copper networks). The cost is so much more significant than anyone seems to expect and in addition to that the subscription rate is never nearly as high and one would think. The average end user is not willing to pay for the product that is desired.*
- *A loan program is not sufficient to overcome the economic barriers to expanding rural broadband. Grants to allow for the initial capital investment are required with ongoing service revenues enough to cover ongoing O&M. Otherwise we can't get over the initial financial hurdles.*
- *Broadband could be the key for success to our small, rural, distressed counties.*
- *There is a need, especially using broadband, for tele-medicine.*
- *I am new to the area and have broadband (BB) (100Mbps down) already. My involvement with the fire and sheriff's dept, local businesses through the chamber of commerce, PUD, EDC, et al has given me an opportunity to see how unconnected the county is. BB is an integral component of the necessary infrastructure for new business as well as education and collaboration amongst the residents. We are a 1,400 square mile county with 13k residents. Getting the folks connected, informed, educated, and collaborating through BB should be top of stack.*

Feedback from Communities

- *Need easier ways to access broadband through local ISPs.*
- *We need to invest in our state's infrastructure starting with broadband but including roads, bridges, water, and waste management.*
- *There is an essential need for telemedicine, with new regulations toward prescriptions. The broadband is an essential infrastructure for continuity of treatment, concerning MAT and multiple use of disciplines. (Massive and fast data exchange).*
- *Currently in Garfield County Washington, residences outside of the city limits have no cell service and can only get a "data plan" package from Hughes Net for their in-home Wi-Fi. It is very expensive and users cannot stream anything like videos, sports games, Netflix, Skype, anything that involves streaming because it eats up their data for the month. This causes home values out in the county to be difficult to sell because new buyers need internet access. Fast internet needs to be the utmost priority for us in Washington and it will take decades to move forward if we don't get everyone on board now!*
- *I work as a consultant statewide. Timing is right to address the need for rural broadband in a holistic and robust way. Lack of rural capacity to plan for broadband is evident in many areas. The state could do more by creating a broadband office to help meet this need and to shepherd the provision of resources and the engagement of other stakeholders to work on the rural broadband issue.*
- *Eligibility needs to consider other factors such as latency, uptime, and net neutrality.*
- *There are no easy, cheap answers to this issue. If you really want every child to do able to homework at home, or to save dollars with rural healthcare programs, then there's got to be big money on the table and it needs to be available to all, not just to public entities.*
- *There is an extreme lack of investment in rural areas by private telecom companies.....no money to be made. Residents are just looking for minimum connection speeds.*
- *Based on the attendance, there is a need. Meeting the need throughout the state may be complicated. The fact that we do not have to show jobs created is helpful. A little concerned about having a dedicated ISP given their nature of business practices and providing information, it may limit many. I am a little concerned that the contingency agreement on a project being public may scare some ISPs. They seem to want it built before signing anything. This may slow down the application process which is our issue.*
- *Broadband has become a lifeline for community members and that they should ensure that all communities are well funded to have it.*
- *PUDs need more funding and more authority to expand rural broadband opportunities.*
- *Very happy to see funding being allocated for broadband infrastructure deployment. Very much needed to support the economic vitality, remote healthcare, and educational access for rural Washington communities! Looking forward to this program being continued and hopefully expanded.*
- *There are projects that we have on our radar to assist the community in various ways - connecting tribes, serving remote areas that have no broadband available. What is lacking is available funding. This is a wonderful step in the right direction.*



*Front: Senator Maralyn Chase,
Back (Left to Right): Janea Delk(Program Director),
Crystal Hottowe, Makah Tribe, Andrea Alexander (Board Members)
Senate Economic Development & International Trade Committee Work session*



2018 Winter Convention Portland, Oregon

RESOLUTION #18 - 16

“SUPPORT FOR THE WASHINGTON STATE REVITALIZATION BOARD”

PREAMBLE

We, the members of the Affiliated Tribes of Northwest Indians of the United States, invoking the divine blessing of the Creator upon our efforts and purposes, in order to preserve for ourselves and our descendants rights secured under Indian Treaties, Executive Orders, and benefits to which we are entitled under the laws and constitution of the United States and several states, to enlighten the public toward a better understanding of the Indian people, to preserve Indian cultural values, and otherwise to promote the welfare of the Indian people, do hereby establish and submit the following resolution:

WHEREAS, the Affiliated Tribes of Northwest Indians (ATNI) are representatives of and advocates for national, regional, and specific tribal concerns; and

WHEREAS, ATNI is a regional organization comprised of American Indians/Alaska Natives and tribes in the states of Washington, Idaho, Oregon, Montana, Nevada, Northern California, and Alaska; and

WHEREAS, the health, safety, welfare, education, economic and employment opportunity, and preservation of cultural and natural resources are primary goals and objectives of the ATNI; and

WHEREAS, the ATNI Telecommunications Committee has been working diligently to address the lack of access to infrastructure that provides high speed internet and cell phone coverage in rural native communities; and

WHEREAS, ATNI member Tribes have made significant progress to inform, educate and advocate on broadband needs to the United States Congress as well as State Legislatures, the impact on Tribal economic development from the lack of broadband access; and

WHEREAS, the Community Economic Revitalization Board (CERB) in Washington State is authorized to make rural broadband loans to local governments and to federally recognized Indian tribes for the purposes of financing the cost to build infrastructure for high-speed, open-access broadband service to rural and underserved communities, for the purpose of community economic development; and

WHEREAS, a legislative request in the amount of \$10 million from the State Taxable Building Construction Account is being considered in the State of Washington 2017-2018 legislative session; and

WHEREAS, this will empower the CERB Board to make grants and loans to local governments and federally recognized Indian tribes to build infrastructure to provide high-speed, open-access broadband service to rural and underserved communities for the purpose of economic development; and

WHEREAS, the impact of these new investments is to support public broadband infrastructure, high-speed development, open access broadband in rural and underserved communities and to stimulate community and economic development; now

THEREFORE BE IT RESOLVED, that ATNI fully supports the \$10 million budget increase to the State of Washington Community Economic Revitalization Board to support rural broadband development.

CERTIFICATION

The foregoing resolution was adopted at the 2018 Winter Convention of the Affiliated Tribes of Northwest Indians, held at the DoubleTree by Hilton - Portland, Oregon, on January 22-25, 2018, with a quorum present.



Leonard Forsman, President



Norma Jean Louie, Secretary



Left to Right: Representative Jim Walsh, George Brady, Randy Ross, Michael Echanove, Randy Hayden, Ken Casavant, Senator Judy Warnick, Richard Bogert

CERB Members Through December 2018

Agency Appointments

Randy Hayden, Chair

Pasco, WA - Port Official

Michael Echanove, Vice-Chair

Palouse, WA - Public

Andrea Alexander

Mountlake Terrace, WA - Small Business

Randy Asplund

Wenatchee, WA - Large Business

Richard Bogert

Pasco, WA - Small Business

George Brady

Pateros, WA - Small Business

Ken Casavant

Pullman, WA - Economist

James Jaime

Forks, WA - Federally Recognized Indian Tribe

Candace Mumm

Spokane, WA - City Official

Randy Ross

Aberdeen, WA - County

Daniel J. Seydel

Shelton, WA - Small Business

VACANT

Large Business, West of the Cascades

Legislative Appointments

Representative Mike Chapman

House Majority Caucus

Representative Jim Walsh

House Minority Caucus

Senator Judy Warnick

Senate Majority Caucus

Senator Maralyn Chase

Senate Minority Caucus

Agency Representatives

Mark Barkley,

Department of Commerce

Elizabeth Robbins,

Department of Transportation

Paul Turek,

Employment Security Department

Aaron Deggs,

Department of Revenue

A Special Thank You

CERB members and staff acknowledge the contribution of the following former CERB members who served during the last two years.

David Rhoden,

Large Business

Ollie Garrett,

Small Business

Michael Karnofski,

County Representative

Allison Clark,

Department of Commerce

Patti Wilson,

Department of Revenue

Representative Dave Hayes

Representative JD Rossetti

Representative Cindy Ryu

Special thanks to the businesses, local governments, federally recognized Indian tribes, and port officials who provided updates for this report.